



# MINI MINI

## Mini Cooper Clubman

VIN NO WMWLN310X02G46018  
Registration Number 0X02G46018



MOT Date	Number of Owners	Number of Keys	Odometer Reading
2025-04-01	3	2	58745 km
Last Service	Last Service Mileage	First Registration Date	Country First Registered
2022-08-01	30210	2018-01-18	Germany

### Inspection Report Summary

Customer	BCA Online	Report Number	P20250922140920
Inspection Date / Place	2025-09-22 / ARS Altmann AG Riedstadt	Cosmetic Grade	3

### Vehicle Summary

Vehicle Condition	Runner	VAT Type	Margin
Fuel Type	Petrol	Road Worthy	Yes
Colour	Grey	Engine Size (cc)	1499
Engine Size	1.5	No of Doors	5
Body Type	Stationwagon / Estate	Drive Train	Front
Seat Colour		No of Seats	5
Seat Covering Name		Seat Covering	Cloth
Charging Cables		NEDC CO2 Rating (q/km)	118
Gearbox Type	Manual		

### Vehicle History & Documents

Service Book Available	Incomplete	Next Service Mileage	km
Previous Usage		Imported	No
Manufacturer Warrenty			









Equipment

Tinted Glass	USB Socket	Alloys wheels	Anti-lock braking
Cruise control	Heated wing mirrors	Remote central locking	Stability control
Electrically folding wing mirrors	Leather steering wheel	Rear parking sensors	Trip Computer
Airbag Status	Ambientlighting	Bluetooth telephone interface	Front fog lamps
Remote adjusting wing mirrors	Satellite navigation	Distancewarningsystem	Emergencybrakeassist
Radio			

Equipment Details

Air Conditioning	Dual Zone Climate Control	Alloy Wheel Size	17
Seat Heating	Front		

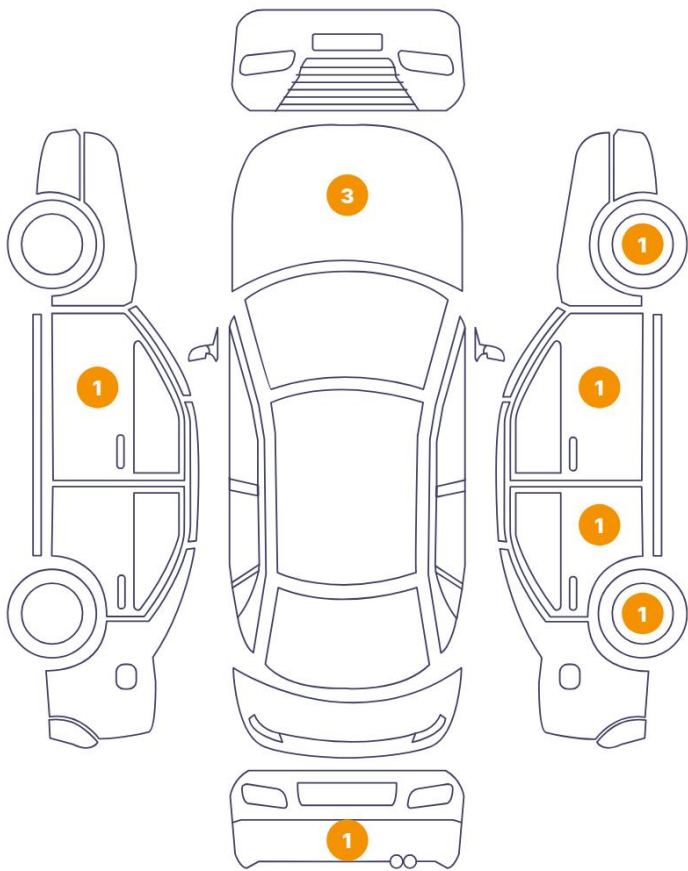
Wheels & Tyres

Right Front Tyre Depth	6	Left Front Tyre Depth	6
Right Rear Tyre Depth	6	Left Rear Tyre Depth	6



Cosmetic Damage

9 Schäden



0 Schäden



Component		Damage	Comments
1	Hood	Bodywork / Dent / Dent	
2	Hood	Bodywork / Dent / Dent	
3	Rim / Front Right	Out of Bodywork / Scratch	
4	Hood	Paint / Poor Previous Repair	
5	Door / Front Right	Paint / Poor Previous Repair	
6	Door / Back Right	Paint / Poor Previous Repair	
7	Rim / Back Right	Out of Bodywork / Scratch	
8	Bumper / Back	Bodywork / Dent / Dent	
9	Door / Front Left	Paint / Scratch / Scuff	



1. Hood  
Bodywork / Dent / Dent -



2. Hood  
Bodywork / Dent / Dent -



3. Rim / Front Right  
Out of Bodywork / Scratch -



4. Hood  
Paint / Poor Previous Repair -



5. Door / Front Right  
Paint / Poor Previous Repair -

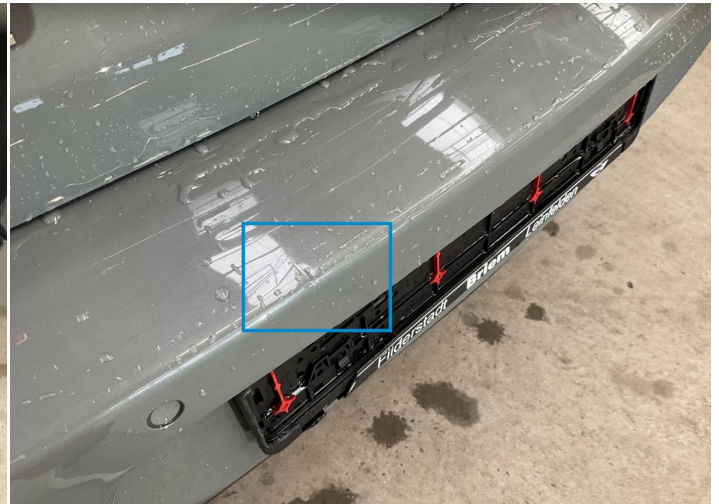


6. Door / Back Right  
Paint / Poor Previous Repair -

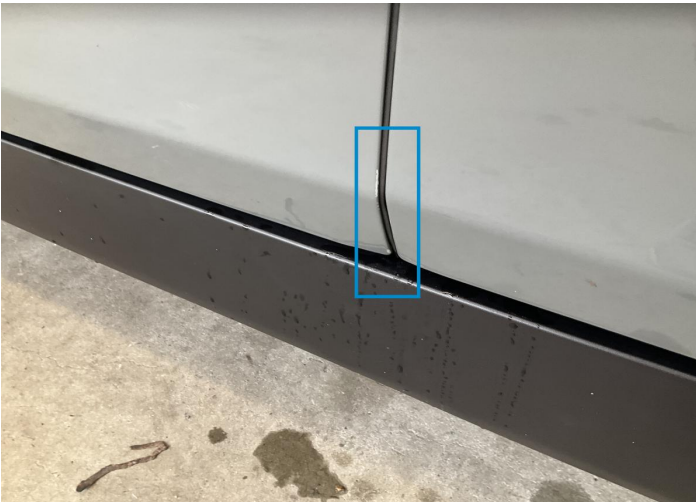




7. Rim / Back Right  
Out of Bodywork / Scratch -



8. Bumper / Back  
Bodywork / Dent / Dent -



9. Door / Front Left  
Paint / Scratch / Scuff -



## Mechanical Condition

### Control Lights

Display Defect	✓	ABS Warning Light	✓
ESP Fault/Traction Control Malfunction Light	✓	Airbag Warning Light	✓
Oil Pressure Warning Light	✓	Brake Warning Light	✓
Power Steering Warning Light	✓	Alternator / Battery	✓
No Dashboard Lights	✓	Service Light	✓
Tire Pressure Monitoring System	✓		

### Engine

Engine Starts	✓	Engine Status / EML	✓
Engine Leak Visible	✓		

### Equipments Test

Central Locking	✓	Electric Windows	✓
Navigation System	✓	Audio Equipment	✓
AC / Heating System	✓	Other Equipments	✓
Main & Spare Keys Functioning	✓	Parking Sensors / Cameras Functioning	✓

### Levels

Brakes Fluid	✓	Coolant Fluid	✓
--------------	---	---------------	---

Test Drive Inspection

Steering Wheel			
Steering   Noise / Anomaly		✓	
Engine			
Engine Noise	✓	Fume Quantity	✓
Power Loss	✓		
Brake			
Brake System Anomaly	✓		
Clutch			
Clutch Functioning	✓		
General			
Test Driven Status	✓		

- ✓ No troubles detected, good condition or correct tests, according to vehicle age and mileage
- ! Damages or malfunction detected that requires repairs by the buyer
- NA Not applicable
- ☐ Not tested

Disclaimer

Please also note the "UserGuide condition report", which shows the scope of the vehicle description.

[User Guide](#)