



MINI Mini: N791ZL

Vinnnummer:	WMW11DJ0802S04554	Versionname:	Mini electric 135kW/ 32,6kWh Business Edition
First Registrationdate:	21/01/2022	Fiscalpower:	
Expertise Mileage:	55703	Power Kw:	135
Bodytype:		Body colour:	Chili Red
Gearbox:	Automatic	Paint type:	Opaque
Transmission:	Front	Type of rims (mounted):	Aluminium
Fueltype:	Electric	Parking lot:	313
Number of seats:	4		
Type of rims (mounted):	Aluminium		
Maintenance needed:	No		

Options

Number of keys total	2	Telephone equipment
Number keys remote	2	Lining leather
GPS		Sun Roof electric
Autom climate control		Panoramic roof
Windows electric F		Central consol F
Radio multimedia		Luggage cover
		Headlights Xenon/LED/Laser
		Rear parking sensors

Degree of wear

205/45/17/88 V				
Summer tyres:	Fr.L.	Hankook: 4,5 mm	Fr.R.	Hankook: 4,8 mm
	Re.L.	Hankook: 4,5 mm	Re.R.	Hankook: 4,4 mm
Tyre profile depth FL				4.5
Tyre profile depth FR				4.8
Tyre profile depth RL				4.5
Tyre profile depth RR				4.4
Tyre size FL				205/45 R 17 88 V
Tyre size FR				205/45 R 17 88 V
Tyre size RL				205/45 R 17 88 V
Tyre size RR				205/45 R 17 88 V
Tyre type FL				Summer
Tyre type FR				Summer
Tyre type RL				Summer
Tyre type RR				Summer
Tyre make FL				260
Tyre make FR				260
Tyre make RL				260
Tyre make RR				260

Assistance equipment

Number of charging cables (normal)	0
Number of charging cables (rapid charge)	1

Alloy rim RL, Scratch(es), Repair and paint (complete)



Wing RL, Dent(s) and scratch(es), Repair and paint (complete)



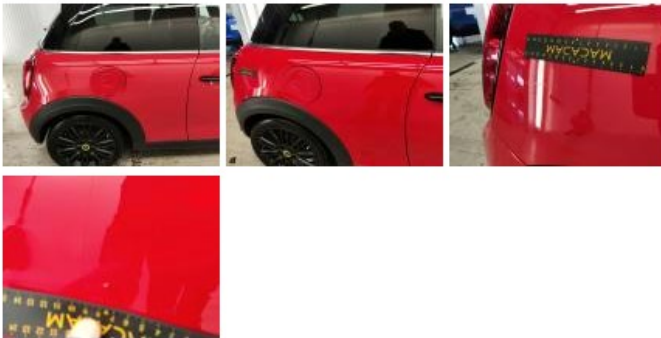
Door FL, Scratch(es), Repair and paint (complete)



Alloy rim FR, Scratch(es), Repair and paint (complete)



Wing RR, Scratch(es), Repair and paint (complete)



Door FR, Scratch(es), Repair and paint (complete)



Charging cable (normal), Missing, Replace



Bumper R, Scratch(es), Repair and paint (complete)



Bodywork, Paint measurement, Acceptable

