



SMART smart fortwo smart Brabus fortwo coupe twinamic



VIN NO WME4533621K210002
Registration Number 621K210002

MOT Date

2026-06-01

Last Service



Number of Owners

1

Last Service Mileage



Number of Keys

2

First Registration Date

2017-05-11

Odometer Reading

94166 km

Country First Registered

Germany

Inspection Report Summary

| | | | |
|-------------------------|------------------------|----------------|-----------------|
| Customer | BCA Online | Report Number | P20250925091957 |
| Inspection Date / Place | 2025-09-25 / BCA Neuss | Cosmetic Grade | 1 |

Vehicle Summary

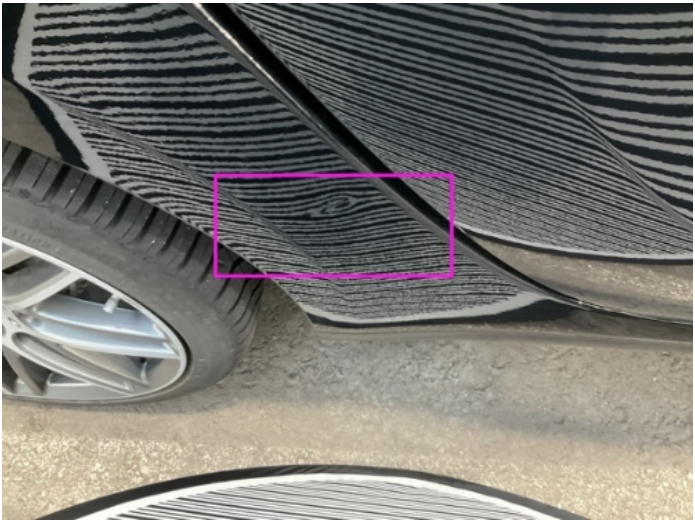
| | | | |
|--------------------|-----------|------------------------|-------------------------|
| Vehicle Condition | Runner | VAT Type | Margin |
| Fuel Type | Petrol | Road Worthy | Yes |
| Colour | Black | Engine Size (cc) | 898 |
| Engine Size | 0.9 | No of Doors | 2 |
| Body Type | Coupe | Drive Train | Rear |
| Seat Colour | | No of Seats | 2 |
| Seat Covering Name | | Seat Covering | Cloth/Synthetic Leather |
| Charging Cables | | NEDC CO2 Rating (q/km) | 102 |
| Gearbox Type | Automatic | | |

Vehicle History & Documents

| | | | |
|------------------------|---------|----------------------|----|
| Service Book Available | Missing | Next Service Mileage | km |
| Previous Usage | | Imported | No |
| Manufacturer Warrenty | | | |







Equipment

| | | | |
|------------------------|----------------------|-------------------------------|----------------------------------|
| USB Socket | Alloys wheels | Auxiliary Socket | Cruise control |
| Remote central locking | Satellite navigation | Sunroof | Radio |
| Airbag Status | Anti-lock braking | Bluetooth telephone interface | Remote adjusting wing mirrors |
| Reversing Camera | Stability control | Leather steering wheel | Rain sensitive windscreen wipers |

Equipment Details

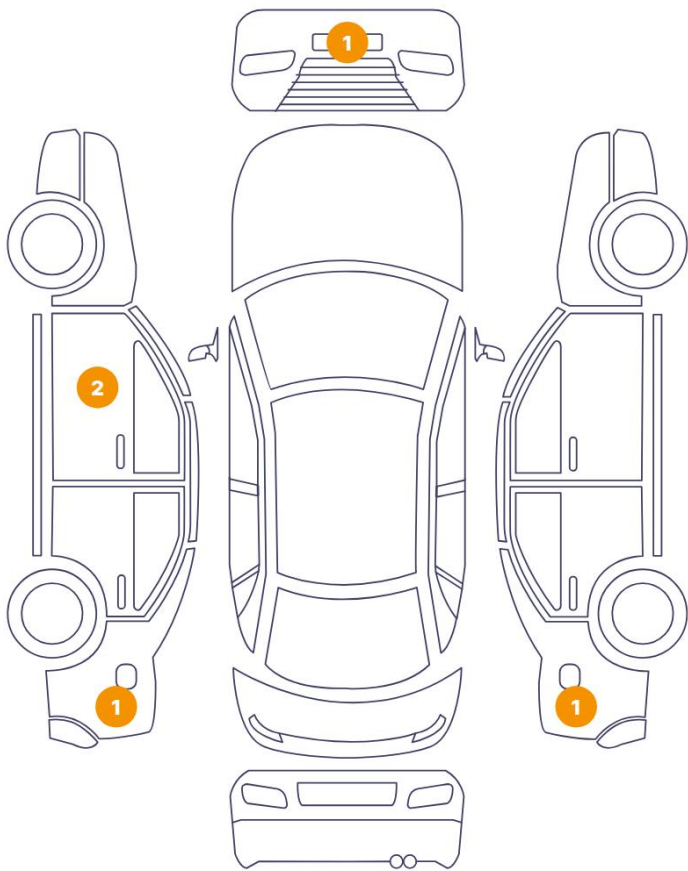
| | | | |
|------------------|-----------------|------------------|-----------------|
| Air Conditioning | Climate Control | Alloy Wheel Size | 17 |
| Seat Heating | Front | Sunroof Type | Fixed Panoramic |

Wheels & Tyres

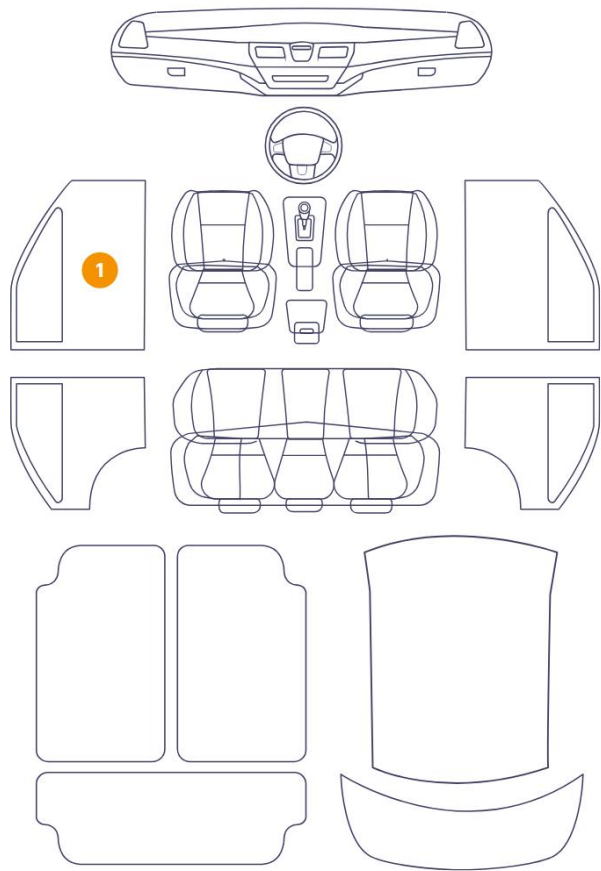
| | | | |
|-----------------------|---|------------------------|---|
| Left Front Tyre Depth | 5 | Right Rear Tyre Depth | 5 |
| Left Rear Tyre Depth | 5 | Right Front Tyre Depth | 5 |

Cosmetic Damage

5 Schäden



1 Schäden



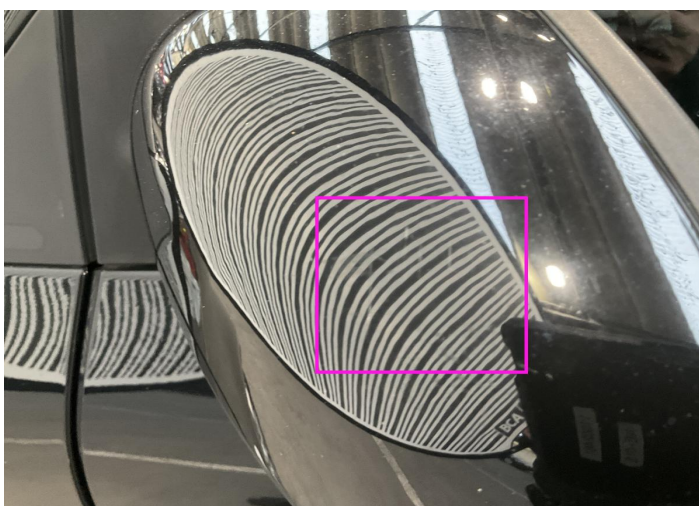
| Component | Damage | Comments |
|-----------------------------------|-----------------------------|----------|
| 1 Door Joint / Front Left Bottom | Bodywork / Breakage / Crack | |
| 2 Fender / Back Left | Bodywork / Dent / Dent | |
| 3 Mirror Shell / Front Left | Paint / Scratch / Scuff | |
| 4 Bumper / Front | Paint / Stone Chip | |
| 5 Fender / Back Right | Bodywork / Dent / Dent | |
| 6 Interior door handle Front left | Interior / Scratched | |



1. Door Joint / Front Left Bottom
Bodywork / Breakage / Crack -



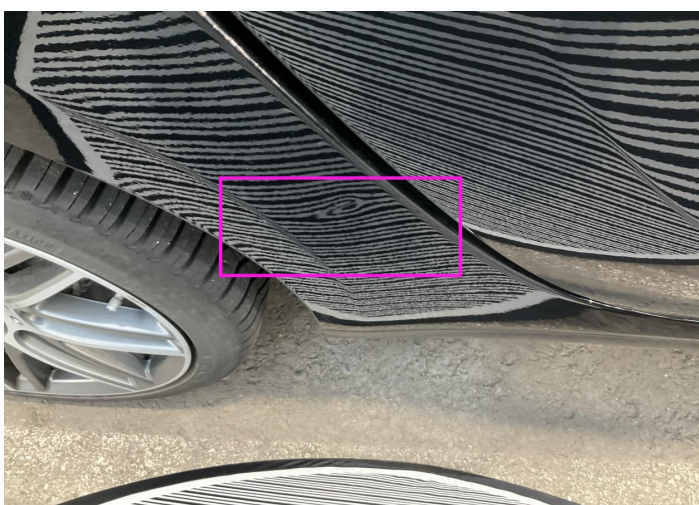
2. Fender / Back Left
Bodywork / Dent / Dent -



3. Mirror Shell / Front Left
Paint / Scratch / Scuff -



4. Bumper / Front
Paint / Stone Chip -



5. Fender / Back Right
Bodywork / Dent / Dent -



6. Interior door handle Front left
Interior / Scratched -

Mechanical Condition

Control Lights

| | | | |
|---------------------------------|---|--|---|
| ABS Warning Light | ✓ | ESP Fault/Traction Control Malfunction Light | ✓ |
| Airbag Warning Light | ✓ | Oil Pressure Warning Light | ✓ |
| Brake Warning Light | ✓ | Power Steering Warning Light | ✓ |
| Alternator / Battery | ✓ | No Dashboard Lights | ✓ |
| Display Defect | ✓ | Service Light | ✓ |
| Tire Pressure Monitoring System | ✓ | | |

Engine

| | | | |
|---------------------|---|---------------------|---|
| Engine Status / EML | ✓ | Engine Leak Visible | ✓ |
| Engine Starts | ✓ | | |

Gearbox

| | |
|----------|---|
| Gear Box | ✓ |
|----------|---|

Equipments Test

| | | | |
|---------------------------------------|---|-------------------------------|----|
| Electric Windows | ✓ | Navigation System | NA |
| Audio Equipment | ✓ | Main & Spare Keys Functioning | ! |
| Parking Sensors / Cameras Functioning | ✓ | | |

Levels

| | | | |
|--------------|---|---------------|---|
| Brakes Fluid | ✓ | Coolant Fluid | ✓ |
|--------------|---|---------------|---|

Test Drive Inspection

Steering Wheel

Steering | Noise / Anomaly

Engine

Engine Noise The Gears Scratch / Skip / Abnormal Operation

Fume Quantity Power Loss

Brake

Brake System Anomaly

General

Test Driven Status

- No troubles detected, good condition or correct tests, according to vehicle age and mileage
- Damages or malfunction detected that requires repairs by the buyer
- Not applicable
- Not tested

Disclaimer

Please also note the "UserGuide condition report", which shows the scope of the vehicle description. [User Guide](#)