



Expertise

Protocol number: 41826461
Order number / reference: 25246402
Inspection date: 6 Oct 2025

Manufacturer: Ford

Model: Transit Custom 320 L2H1 LKW VA MH Trend

VIN: WF0ZXXTTGZNJ33088



Vehicle details	
Manufacturer / Type / Model / Equipment	
Ford Transit Custom 320 L2H1 LKW VA MH Trend	
Vehicle Identification number	WF0ZXXTTGZNJ33088
Mileage (Read)	99,084 km
First registration	7 Sept 2022
Number of holders	1
Power / Engine displacement	96 kw / 1,995 ccm
Fuel type / Cylinder	Diesel / 4
Gearbox / Number of gears	Manual / 6
Type of drive	Front drive
Type of vehicle	Van
Colour / colour code	Frozen White
Doors / Seats	4 / 6
Upholstery type	Cloth
Colour of upholstery	Black
Vehicle with smoke odor	no



Vehicle details

Maintenance booklet / proof	digital proof / complete	Next maintenance in	35,000 km
Last maintenance on / at	06/2025 at 90,748 km		
Key is / should be	2 / 2	FZG documents	ZB#2 (B) was available (copy), ZB#1 (S) was not available
		Letter No.	GK834296
Previous damage / Accident	None detectable	Repainting	None detectable
Inspection conditions	sufficient	Lifting equipment / pit	yes
Test drive	Not performed	Engine function test	Performed
Manufacturer key number/ type code number	8566 / BMU 07349		
Emission standard	EURO6;WLTP;AR;PI/CI;N1 III, N2	Fine dust sticker	
Permitted total weight	3,200 kg	Empty weight	

Tyres

Mounted tyres

#	Tyre size	Type of tyre	Manufacturer	Tread depth
1)	215/65 R16 109R	Winter tyres on Steel rim with wheel cover	Continental	6mm / 6mm
2)	215/65 R16 109R	Winter tyres on Steel rim with wheel cover	Continental	7mm / 7mm

Additional tyres

#	Tyre size	Type of tyre	Manufacturer	Tread depth
1)	215/65 R16 109T	All-season tyres on Steel	Goodyear	7mm / 7mm
2)	215/65 R16 109T	All-season tyres on Steel	Goodyear	7mm / 7mm

Replacement

Typ	Tyre size	Type of tyre	Manufacturer	Tread depth
E	215/65 R16 109T	All-season tyres on Steel	Goodyear	8 mm

Legend: Tread depth information for tires on the left is in the first place, for tires on the right is in the second place on the axle in the direction of travel

Equipment

Standard equipment

- 1 battery
- Anti-lock braking system with electronic brake-force distribution (EBD)
- On-board computer (with fuel consumption and mileage information (e.g. remaining range) and outside temperature display)
- Double-wing rear door with 180° opening angle (without window)
- Electronic Safety and Stability Program (ESP) with Traction Control (TCS) (Hill Start Assist - Crosswind Assist - Safety Brake Assist - Rollover Protection)
- FordPass Connect (including live traffic information and Wi-Fi hotspot). Information about the current status or location of the vehicle as well as control of selected vehicle functions via smartphone with the FordPass app. Current traffic information in real time (in conjunction with Audio System 24 and 25). Wi-Fi hotspot (up to 4 G/LTE, for up to 10 mobile devices). Further information on FordPass Connect can be found at <https://www.ford.de/fordpass-connect>.)
- Front air conditioning (including dust and pollen filter)
- Paint finish: Solid paint
- Cargo area floor: Vinyl floor covering, sealed, "Easy Clean"
- Steering column, adjustable in height and reach
- Package: Style color package (front and rear bumpers and exterior mirror caps painted in body color)
- Particulate filter: diesel particulate filter
- Hubcaps
- Wheels/Tires: Spare wheel, steel wheel
- Wheels: Steel wheels 6.5 J x 16 with 215/65 R 16 R tires (6.5 J x 16 with 215/65 R 16 R tires)
- Headlights: Halogen projector headlights (with LED daytime running lights and fog lights with static cornering lights)
- Side protection strips
- Power steering
- Seats: Seat Package 13 - Partition, without window (Custom Truck Trend MH) (Driver's seat, 4-way adjustable (forward/backward, backrest, seat cushion tilt, height) - Double passenger seat with storage compartment under individually foldable seat cushions - Height-adjustable headrests - Tray integrated in the double passenger seat (fold-out) - Inside armrest for driver - Manual lumbar support (driver's seat) - TREND seat cover: fabric - Partition, without window)
- Driver's side airbag
- Exterior mirrors, electrically adjustable and heated (with integrated indicators)
- roof, flat
- Headliner in driver's cab (up to the partition wall to the cargo area)
- tachometer
- Third brake light
- Electric front windows (with quick-down/-up switch for driver's side)
- Ford Easy Fuel (comfort fuel cap and misfuelling protection)
- Warranty 2-year Ford new car warranty including the Ford Assistance mobility guarantee
- Cruise control including leatherette steering wheel (with adjustable speed limiter)
- Transmission: 6-speed transmission
- Glove compartment with lockable lid
- Interior lighting with delay circuit (with reading lights at the front)
- Fuel tank 70 l
- Cargo compartment lighting with activatable switch-off delay (after 30 minutes)
- Emergency braking assistance including emergency brake light
- Parking pilot system front and rear including fog lights
- Radio: Audio system 13 additionally with DAB/DAB+ (Radio (FM/AM) - Four speakers, antenna - Audio remote control on the steering wheel - Bluetooth, USB connection and hands-free system - MyFord Dock - also with digital radio reception DAB/DAB+ (Digital Audio Broadcasting))
- Sliding door entry light automatically when door is opened
- Sliding door: Sliding door, right
- Mud flaps front and rear
- Side wall cladding half-height
- Seat belts (front seat belt pretensioners and force limiters - driver's seat belt not fastened warning system)
- Start-stop system
- Socket: 12-volt connection
- Lashing eyes 8
- Immobiliser
- Heat-insulating glazing, slightly tinted
- Central locking with remote control
- auxiliary heater, electric
- Second key with remote control

Extra equipment

- Airbag (passenger side)
- Bott fittings
- Double rear door with 180° opening angle (with window) (with heated rear windows)
- LED lights in the cargo area
- Exterior mirrors, electrically adjustable, heated and folding (with integrated indicators)
- Rear window wiper (including windscreen washer nozzle and automatic activation when reverse gear is engaged)



- Wheels: All-season tires (suitable for winter use)
- Seats: Seat Package 13 - Partition with window (Custom Truck Trend MH) (Driver's seat, 4-way adjustable (forward/backward, backrest, seat cushion tilt, height) - Double passenger seat with storage compartment under individually foldable seat cushions - Height-adjustable headrests - Tray integrated into the double passenger seat (fold-out) - Inside armrest for driver - Manual lumbar support (driver's seat) - TREND seat cover: fabric - Partition with window)
- Heat-insulating glazing, medium tint of the side window(s) of the 2nd row
- Radio: Audio system 24: Ford audio system including Ford SYNC3 with AppLink, DAB/DAB+, navigation system (FM/AM radio, 8" touchscreen multifunction display (20.32 cm), 4 speakers, FordPass Connect Wi-Fi hotspot, integrated control panel and audio remote control on the steering wheel, Ford SYNC 3 with touchscreen (hands-free system with voice command control, SMS reading/sending function, Bluetooth, emergency call assistant, etc.), AppLink (advanced voice control, private mode, support for Android Auto and Apple CarPlay, capacitive touchscreen technology, etc.), dynamic navigation, lane recommendation, road map for Western Europe)

Brief expert findings

Documents submitted	At the time of the inspection, the registration certificate Part 2 (letter) was available, but the registration certificate Part 1 (certificate) was not. (Copy)
VIN comparison	The vehicle identification number (VIN) was read from the vehicle and its conformity with the submitted documents was verified during the inspection by the undersigned.
Inspection	The inspection conditions were sufficient for the assessment of the vehicle. Lifting equipment and a pit were available for examining the vehicle.
Test drive	No test drive/maneuvering was carried out during the inspection of the vehicle.
Engine function test	An engine test run was performed.

Value reducing factors

No.	Component group	Description
1	Side panel - rear left side	Side panel - Scratch(es) - Smart repair
2	Side panel - rear right side	Side panel - dent(s) - Repair and paint

Wear and tear

No.	Component group	Description
1	Interior	Interior - Scratch(es) - No deduction
2	Bonnet	Bonnet - Stone chips - No deduction
3	Vehicle glazing	Windscreen - Stone chips - No deduction
4	Door - front right side	Door - dent(s) - No deduction

The vehicle shows signs of wear commensurate with its age and use.

Order/Scope of order

The order was placed to prepare a sales report for the vehicle described. This includes the following:

- Description of core relevant information about the vehicle
- Documentation of equipment features
(Delivery by third-party service providers)
- Documentation of damage, defects, missing parts
- Documentation of previous damage, unrepaired previous damage, repainting
- a brief visual or functional inspection of the equipment details if possible.
(Functional tests of driver assistance systems are not included in the scope of services!)
- a photo documentation of the vehicle



Basis for the order

This product is based on the Alphabet Fuhrpark GmbH guidelines for vehicle returns and valuations. The expert makes the explicit findings in each individual case objectively within the framework of the specified standards based on his or her own expertise.

The vehicle inspection takes place in a disassembled state.

Damage or defects that can only be detected during disassembly/diagnosis work or through advanced knowledge remain within the scope of the prognosis risk. An extended risk exists for concealed defects caused by fraudulent deception and not identifiable by the expert.

Damage or defects resulting from normal use or wear and tear of the vehicle will be accepted according to the applicable standard.

There was no explicit identification or monetary consideration of the expected features within the product.

Features which in their nature and severity slightly exceed normal use but do not constitute unacceptable damage will be documented and identified under signs of use if necessary.

Damage or defects that can no longer be attributed to normal use or wear and tear according to the underlying standard are listed in the product under value-reducing factors.

Depending on the product specification, a monetary ID can be provided. If this takes place, the costs can be 100% d or pro rata depending on the vehicle's age and mileage.

Previous damages

Apparently, no repaired previous damage could be found on the vehicle.

Comments

- Der montierte Radsatz ist kein Bestandteil des Auslieferumfangs.



Figure 1: Diagonal front (left)



Figure 2: Diagonal front (right)



Figure 3: Diagonal rear (left)



Figure 4: Diagonal rear (right)



Figure 5: Interior - front



Figure 6: Interior - rear



Figure 7: Instrument cluster



Figure 8: Instrument panel



Figure 9: Interior 360° view



Figure 10: Cargo area

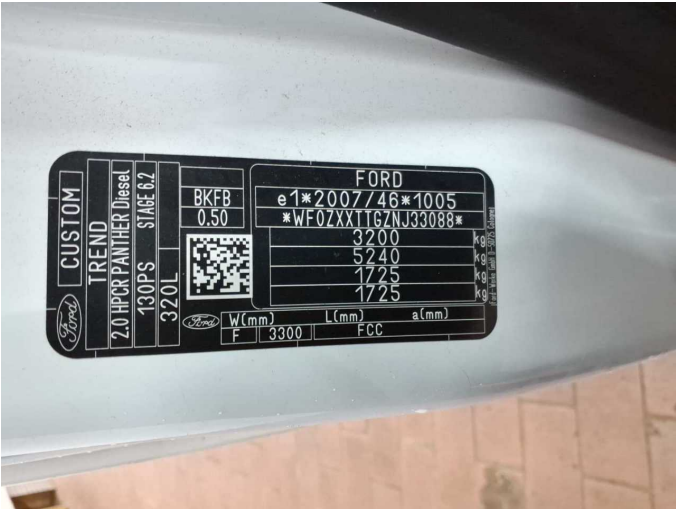


Figure 11: VIN



Figure 12: Mounted tyres

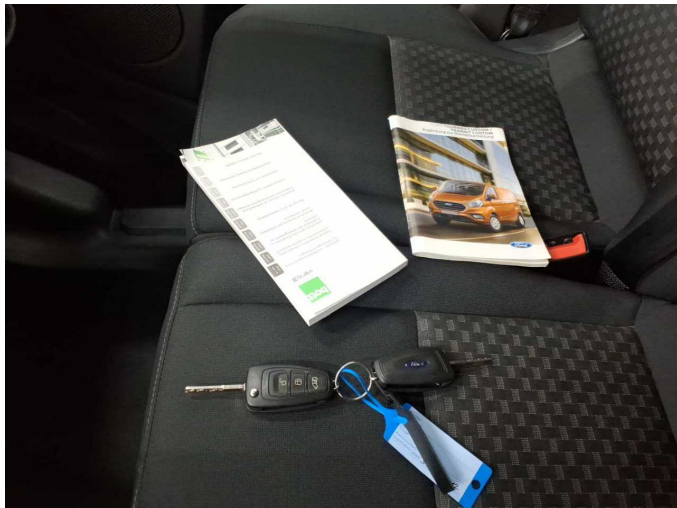


Figure 13: Documents



Figure 14: Documents



Figure 15: Additional tyres



Figure 16: Navigation



Figure 17: Misc.

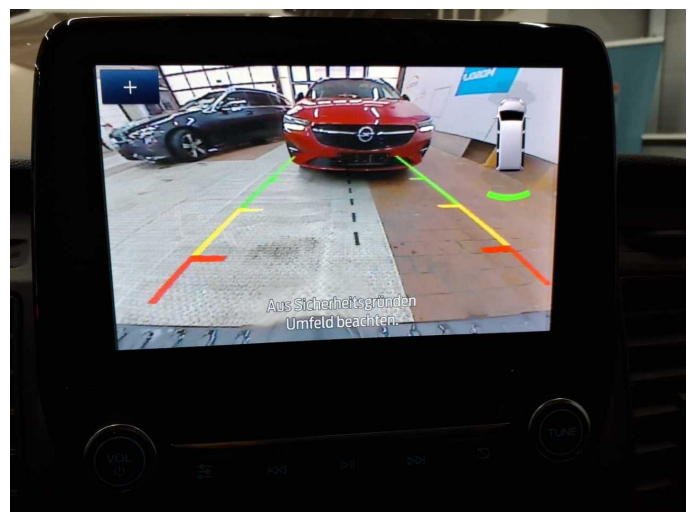


Figure 18: Misc.



Figure 19: Misc.



Figure 20: Misc.



Figure 21: Misc.



Figure 22: Misc.



Figure 23: Misc.

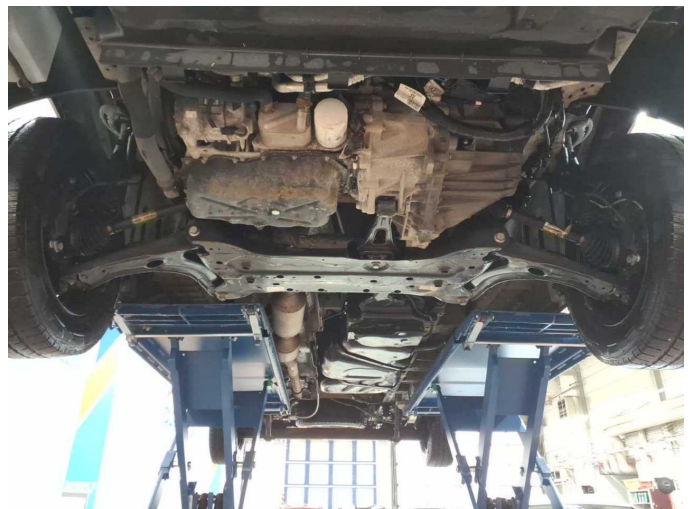


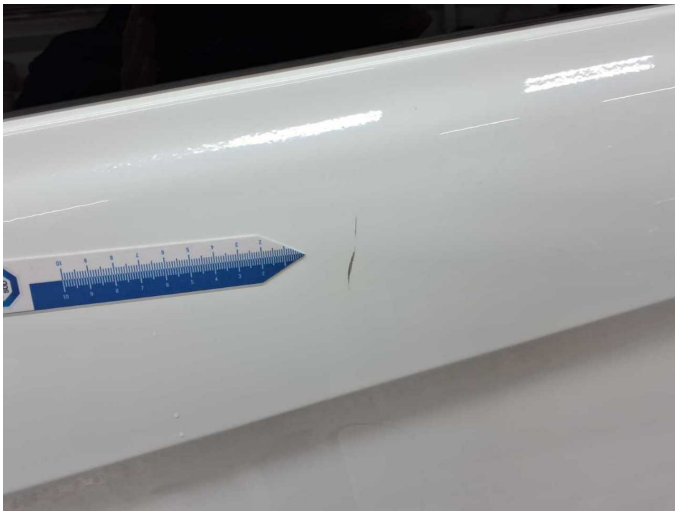
Figure 24: Misc.



Figure 25: Misc.



Damage 1: Side panel - rear left side: Side panel - Scratch(es) - Smart repair



Damage 1: Side panel - rear left side: Side panel - Scratch(es) - Smart repair



Damage 2: Side panel - rear right side: Side panel - dent(s) - Repair and paint



Damage 2: Side panel - rear right side: Side panel - dent(s) - Repair and paint



Damage 2: Side panel - rear right side: Side panel - dent(s) - Repair and paint



Damage 2: Side panel - rear right side: Side panel - dent(s) - Repair and paint



Damage 2: Side panel - rear right side: Side panel - dent(s) - Repair and paint



Wear and tear 4: Door - front right side: Door - dent(s) - No deduction



Wear and tear 4: Door - front right side: Door - dent(s) - No deduction



Wartungshistorie

(gemäß Auftraggeber Informationen)

Fahrgestellnummer: WF0ZXXTTGZNJ33088

Hersteller / Modell: FORD FORD Transit Custom 320 L2H1 LKW VA MH Trend

Datum	KM-Stand	Beschreibung
21.08.2025	99.034	Bremsbelagfühler ern; Bremse Sonstiges; Bremsklötze hinten; Bremsklötze vorne; Bremsscheiben + Klötze v; Bremsscheiben vorne
28.06.2025	90.748	Luftfiltereinsatz ern; Motoröl b. Wartung; Ölfilter ern; Regelwartungsdienst
08.05.2025	84.119	HU + AU
21.06.2024	48.825	Bremsflüssigkeit; Bremsflüssigkeit ern; Motoröl b. Wartung; Ölfilter ern; Regelwartungsdienst