



Expertise

Protocol number: 41634804  
Order No. / Reference: 25238617  
Inspection date: 22 Sept 2025

Manufacturer: Ford

Model: Transit Custom 280 L1H1 LKW VA Trend

VIN: WF0ZXXTTGZLR04757



Vehicle details	
Manufacturer / Type / Model / Equipment	
Ford Transit Custom 280 L1H1 LKW VA Trend	
Vehicle Identification number	WF0ZXXTTGZLR04757
Mileage (Read)	111,509 km
First registration	3 Apr 2020
Number of holders	1
Next periodical technical inspection	04/2026
(Report not on hand)	
Power / Engine displacement	96 kw / 1,995 ccm
Fuel type / Cylinder	Diesel / 4
Gearbox / Number of gears	Manual / 6
Type of drive	Front drive
Type of vehicle	Van
Colour / colour code	Frost-Weiß
Doors / Seats	4 / 5
Upholstery type	Cloth
Colour of upholstery	Black
Re/Import	no
Vehicle with smoke odor	Yes (not ozone treated)
Driving readiness	Roadworthy



## Vehicle details

<b>Maintenance booklet / proof</b>	digital proof / complete	<b>Next maintenance in</b>	15,000 km
<b>Last maintenance on / at</b>	04/2024 at 82,946 km		
<b>Key is / should be</b>	2 / 3	<b>FZG documents</b>	ZB#2 (B) was available (copy), ZB#1 (S) was not available
		<b>Letter No.</b>	FS979070
<b>Previous damage / Accident</b>	Detectable	<b>Repainting</b>	Detectable
<b>Inspection conditions</b>	sufficient	<b>Lifting equipment / pit</b>	yes
<b>Test drive</b>	Not performed	<b>Engine function test</b>	Performed
<b>Driving readiness</b>	Roadworthy		
<b>Manufacturer key number/ type code number</b>	8566 / BMU 05454		
<b>Emission standard</b>	EURO6;WLTP;CI;PI/CI;N1 III, N2	<b>Fine dust sticker</b>	
<b>Permitted total weight</b>	2,800 kg	<b>Empty weight</b>	

## Tyres

### Mounted tyres

#	Tyre size	Type of tyre	Manufacturer	Tread depth
1)	215/65 R15 104T	Summer tyres on Steel rim with wheel cover	Continental	6mm / 6mm
2)	215/65 R15 104T	Summer tyres on Steel rim with wheel cover	Continental	6mm / 6mm

### Additional tyres

#	Tyre size	Type of tyre	Manufacturer	Tread depth
1)	215/65 R15 104T	Winter tyres on Steel	Continental	8mm / 8mm
2)	215/65 R15 104T	Winter tyres on Steel	Continental	9mm / 9mm

### Replacement

Typ	Tyre size	Type of tyre	Manufacturer	Tread depth
E	215/65 R15 104T C	Summer tyres on Steel	Continental	8 mm

**Legend:** Tread depth information for tires on the left is in the first place, for tires on the right is in the second place on the axle in the direction of travel



## Equipment

### Standard equipment

- |  |   |
|--|---|
| <ul style="list-style-type: none"> <li>• 1 battery</li> <li>• Anti-lock braking system with electronic brake-force distribution (EBD)</li> <li>• roof, flat</li> <li>• Double-wing rear door with 180° opening angle (without window)</li> <li>• Windows, 2nd row: fixed side windows, right and left</li> <li>• Front window lifter, electric</li> <li>• FordPass Connect</li> <li>• Generator, 240 A</li> <li>• Cruise control including leather steering wheel</li> <li>• Grab handle on the B-pillar on the passenger side</li> <li>• Interior lighting with delay circuit</li> <li>• Paint finish: Solid paint</li> <li>• Steering column, adjustable in height and reach</li> <li>• Package: Style Color Package</li> <li>• Particulate filter: diesel particulate filter</li> <li>• Wheels/Tires: Spare wheel, steel wheel</li> <li>• Sliding door entry light automatically when door is opened</li> <li>• Sliding door: Sliding door, right</li> <li>• Side protection strips</li> <li>• Power steering</li> <li>• Seats: 2nd row, 3-seater bench</li> <li>• Start-stop system</li> <li>• Front bumper in body color</li> <li>• Immobiliser</li> <li>• Central locking with remote control</li> <li>• Second key with remote control</li> </ul> | <ul style="list-style-type: none"> <li>• Driver's side airbag</li> <li>• Exterior mirrors, electrically adjustable and heated</li> <li>• On-board computer</li> <li>• Headlining in driver's cab</li> <li>• tachometer</li> <li>• Electronic Safety and Stability Program (ESP) with Traction Control (TCS)</li> <li>• Ford Easy Fuel</li> <li>• Warranty 2-year Ford new car warranty including the Ford Assistance mobility guarantee</li> <li>• Transmission: 6-speed transmission</li> <li>• Glove compartment with lockable lid</li> <li>• Front air conditioning</li> <li>• Cargo area lighting with activatable switch-off delay</li> <li>• Emergency braking assistance including emergency brake light</li> <li>• Hubcaps</li> <li>• Wheels: Steel wheels 6.5 J x 15 with 215/65 R 15 tires (6.5 J x 15 with 215/65 R 15 tires)</li> <li>• Mud flaps front and rear</li> <li>• Low side wall cladding</li> <li>• Seat belts</li> <li>• Seats: Seat Package 14 (Custom DOKA Trend)</li> <li>• Socket: 12-volt connection</li> <li>• Lashing eyes 4</li> <li>• Heat-insulating glazing, slightly tinted</li> <li>• auxiliary heater, electric</li> </ul> |
|--|---|

### Extra equipment

- |   |   |
|---|---|
| <ul style="list-style-type: none"> <li>• Blind Spot Assist including Cross Traffic Alert and trailer function (exterior mirrors, electrically adjustable and heated, also electrically folding)</li> <li>• Low beam headlights: Bi-xenon headlights with LED daytime running lights (and fog lights with static cornering lights)</li> <li>• Package: Visibility Package II (Trend) (heated windshield - electrically folding exterior mirrors - adjustable instrument lighting - windshield wipers with rain sensor - headlight assistant with day/night sensor)</li> <li>• Rear view camera with parking pilot system front and rear with fog lights (with image transmission of the rear path in the multifunction display [additionally with coupling aid in conjunction with tow bar (extra charge)] with high-mounted LED exterior downlight)</li> <li>• SORTIMO CNRN 172734</li> <li>• Tire pressure monitoring system (TPMS)</li> </ul> | <ul style="list-style-type: none"> <li>• 3.Keys / rubber mats / covers</li> <li>• Airbag (passenger side)</li> <li>• Auxiliary heater, programmable, with remote control</li> <li>• Radio: Audio system 25: Ford audio system including Ford SYNC3 with AppLink, DAB/DAB+, navigation (Radio (FM/AM), 8" touchscreen multifunction display, FordPass Connect Wi-Fi hotspot, integrated control panel and audio remote control, Ford SYNC 3 with touchscreen (hands-free system with voice command control, SMS reading/sending function, Bluetooth, emergency call assistant, etc.), AppLink (extended voice control, private mode, support for Android Auto and Apple CarPlay, capacitive touchscreens, etc.), lane recommendation, cruise control, lane keeping assist, traffic sign recognition, Park Pilot front/rear)</li> <li>• SORTIMO CNRN 11141</li> <li>• SORTIMO CNRN 13138</li> </ul> |
|---|---|



## Brief expert findings

Documents submitted	At the time of the inspection, the registration certificate Part 2 (letter) was available, but the registration certificate Part 1 (certificate) was not. (Copy)
VIN comparison	The vehicle identification number (VIN) was read from the vehicle and its conformity with the submitted documents was verified during the inspection by the undersigned.
Inspection	The inspection conditions were sufficient for the assessment of the vehicle. Lifting equipment and a pit were available for examining the vehicle.
Test drive	No test drive/maneuvering was carried out during the inspection of the vehicle.
Engine function test	An engine test run was performed.
Driving readiness	The vehicle was drivable at the time of inspection.

## Value reducing factors

No.	Component group	Description
1	Wheel / tyres	Wheel cover - front right side - Scratched - Replace
2	Wheel / tyres	Wheel cover - rear right side - Scratched - Replace
3	Seat - front	Protective Cover - left side - Broken / torn - Replace
4	Interior	Interior - Odour - Ozone treatment
5	Side panel - rear left side	Side panel - Dent / paintcoat damage - Smart repair
6	Rear bumper	Bumper - rear right side - Scratch(es) - Smart repair
7	Rear bumper	Bumper - rear left side - Scratch(es) - Smart repair

## Wear and tear

No.	Component group	Description
1	Door - rear right side	Door - Scratch(es) - No deduction
2	Door - front left side	Door seal - No deduction
3	Body	Body - Scratch(es) - No deduction
4	Rear bumper	Rear bumper - Scratch(es) - No deduction
5	2nd wheel set	2 tyres - Scratch(es) - No deduction

The vehicle shows signs of wear commensurate with its age and use.

## Missing parts

### Description

Equipment - Vehicle key with remote control

## Previous damages

No.	Previous damage	Extent of damage (Net)
1	Side right, Provided by user / customer, from 9 Oct 2020	1.825,03 €
2	Rear, Side right, Provided by user / customer, from 5 Dec 2022	2.267,19 €

## Repainting

### No. Repainting

1 Boot lid / rear door, Side panel - rear left side, Side panel - rear right side, Professionally carried out

## Paint coat thickness measurement



Boot lid / rear door	1,510 µm	Side panel - rear left side	785 µm
Side panel - rear right side	1,550 µm		

## Order/Scope of order

The order was placed to prepare a sales report for the vehicle described. This includes the following:

- Description of core relevant information about the vehicle
- Documentation of equipment features  
(*Delivery by third-party service providers*)
- Documentation of damage, defects, missing parts
- Documentation of previous damage, unrepaired previous damage, repainting
- a brief visual or functional inspection of the equipment details if possible.  
(*Functional tests of driver assistance systems are not included in the scope of services!*)
- a photo documentation of the vehicle

## Basis for the order

This product is based on the guidelines for vehicle returns and valuations of light commercial vehicles from Alphabet Fuhrparkmanagement GmbH. The expert makes the explicit findings in each individual case objectively within the framework of the specified standards based on his or her own expertise.

The vehicle inspection takes place in a disassembled state.

Damage or defects that can only be detected during disassembly/diagnosis work or through advanced knowledge remain within the scope of the prognosis risk. An extended risk exists for concealed defects caused by fraudulent deception and not identifiable by the expert.

Damage or defects resulting from normal use or wear and tear of the vehicle will be accepted according to the applicable standard.

There was no explicit identification or monetary consideration of the expected features within the product.

Features which in their nature and severity slightly exceed normal use but do not constitute unacceptable damage will be documented and identified under signs of use if necessary.

Damage or defects which, according to the underlying standard, can no longer be attributed to normal use or wear and tear are listed in the product under "Depreciating Factors".

Depending on the product specification, a monetary ID can be provided. If this takes place, the costs can be 100% d or pro rata depending on the vehicle's age and mileage.

## Previous damages

According to available information previous damages were repaired at the vehicle. Traces of repairs, which allow conclusions about the area of repair, were not recognizable during the inspection.

## Comments

- Winterradsatz ist kein Bestandteil des Auslieferumfangs.





Figure 1: Diagonal front (left)



Figure 2: Diagonal front (right)



Figure 3: Diagonal rear (left)



Figure 4: Diagonal rear (right)



Figure 5: Interior - front



Figure 6: Interior - rear





Figure 7: Instrument cluster



Figure 8: Instrument panel



Figure 9: Interior 360° view



Figure 10: Cargo area



Figure 11: VIN



Figure 12: Mounted tyres

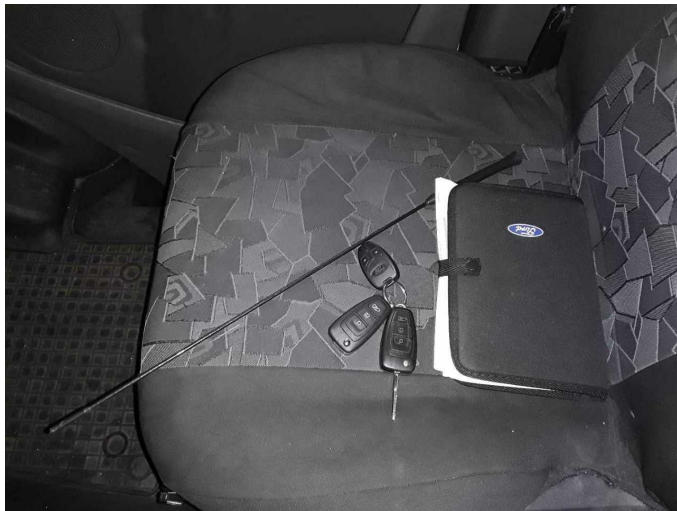


Figure 13: Documents



Figure 14: Documents



Figure 15: Documents



Figure 16: Documents



Figure 17: Additional tyres



Figure 18: Navigation





Figure 19: Misc.

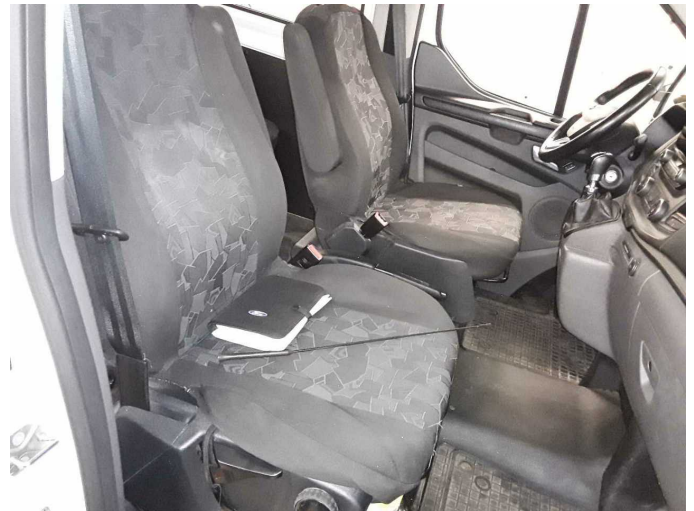


Figure 20: Misc.



Figure 21: Misc.



Figure 22: Misc.



Figure 23: Misc.



Figure 24: Misc.





Figure 25: Misc.



Figure 26: Misc.



**Damage 1:** Wheel / tyres: Wheel cover - front right side - Scratched - Replace



**Damage 1:** Wheel / tyres: Wheel cover - front right side - Scratched - Replace



**Damage 2:** Wheel / tyres: Wheel cover - rear right side - Scratched - Replace



**Damage 2:** Wheel / tyres: Wheel cover - rear right side - Scratched - Replace



**Damage 3:** Seat - front: Protective Cover - left side - Broken / torn - Replace



**Damage 3:** Seat - front: Protective Cover - left side - Broken / torn - Replace



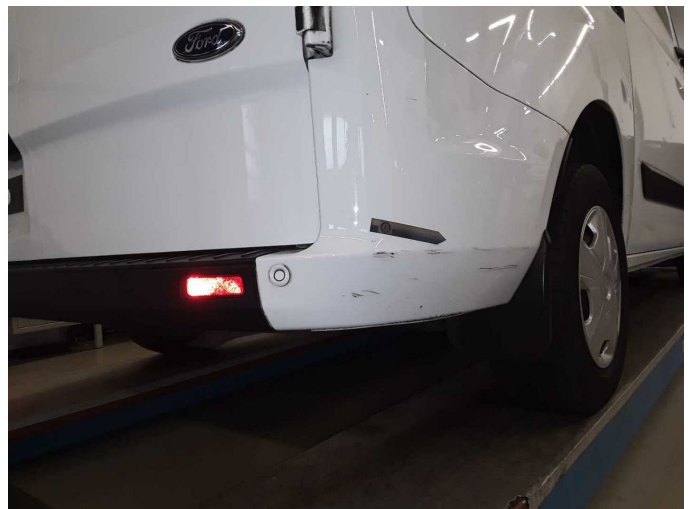
**Damage 4:** Interior: Interior - Odour - Ozone treatment



**Damage 5:** Side panel - rear left side: Side panel - Dent / paintcoat damage - Smart repair



**Damage 5:** Side panel - rear left side: Side panel - Dent / paintcoat damage - Smart repair



**Damage 6:** Rear bumper: Bumper - rear right side - Scratch(es) - Smart repair





**Damage 6:** Rear bumper: Bumper - rear right side - Scratch(es) - Smart repair



**Damage 7:** Rear bumper: Bumper - rear left side - Scratch(es) - Smart repair



**Damage 7:** Rear bumper: Bumper - rear left side - Scratch(es) - Smart repair



**Damage 7:** Rear bumper: Bumper - rear left side - Scratch(es) - Smart repair



**Wear and tear 4:** Rear bumper: Rear bumper - Scratch(es) - No deduction



**Wear and tear 5:** 2nd wheel set: 2 tyres - Scratch(es) - No deduction



**Wear and tear 5:** 2nd wheel set: 2 tyres - Scratch(es) - No deduction



**Missing part 1:** Equipment: Vehicle key with remote control - Missing - Replace



**Boot lid / rear door:** 1,510  $\mu\text{m}$



**Boot lid / rear door:** 1,510  $\mu\text{m}$



**Boot lid / rear door:** 1,510  $\mu\text{m}$



**Side panel - rear left side:** 785  $\mu\text{m}$





Side panel - rear left side: 785 µm



Side panel - rear right side: 1,550 µm



Side panel - rear right side: 1,550 µm





# Wartungshistorie

(gemäß Auftraggeber Informationen)

Fahrgestellnummer: WF0ZXXTTGZLR04757

Hersteller / Modell: FORD FORD Transit Custom 280 L1H1 LKW VA Trend

Datum	KM-Stand	Beschreibung
21.01.2025	98.270	Reparatur Sonstiges; Systemtest/Eigendiagnose
11.04.2024	82.946	Bremse Sonstiges; Bremsflüssigkeit; Bremsflüssigkeit ern; Bremsklötze hinten; Bremsscheiben + Klötze v; Bremsscheiben hinten; HU + AU; Luftfiltereinsatz ern; Motoröl b. Wartung; Ölfilter ern; Regelwartungsdienst; Systemtest/Eigendiagnose; Wartung Sonstiges
27.12.2023	77.223	Reparatur Sonstiges; Systemtest/Eigendiagnose
06.10.2023	73.089	Bremse Sonstiges; Bremsklötze vorne; Bremsscheiben + Klötze v; Bremsscheiben vorne; Systemtest/Eigendiagnose; Wartung Sonstiges
03.05.2022	41.900	Bremsflüssigkeit; Bremsflüssigkeit ern; HU + AU; Motoröl b. Wartung; Ölfilter ern; Regelwartungsdienst; Systemtest/Eigendiagnose; Wartung Sonstiges