



Expertise

Protocol number: 41186590
Order No. / Reference: 25066747
Inspection date: 22 Aug 2025

Manufacturer: Ford

Model: Transit Custom 280 L1H1 LKW VA Trend

VIN: WF0YXXTTGYPK61319



Vehicle details

Manufacturer / Type / Model / Equipment

Ford Transit Custom 280 L1H1 LKW VA Trend

Vehicle Identification number	WF0YXXTTGYPK61319
Mileage (Read)	71,255 km
First registration	12 May 2023
Number of holders	1
Next periodical technical inspection	05/2026
(Report not on hand)	

Power / Engine displacement	77 kw / 1,995 ccm
Fuel type / Cylinder	Diesel / 4
Gearbox / Number of gears	Manual / 6
Type of drive	Front drive
Type of vehicle	Van
Colour / colour code	Blazer Blau
Doors / Seats	4 / 3
Upholstery type	Cloth
Colour of upholstery	Black-Dark grey



Vehicle details

Maintenance booklet / proof	digital proof / complete	Next maintenance in	6 Tag(e)
Last maintenance on / at	08/2024 at 40,127 km		
Key is / should be	2 / 2	FZG documents	ZB#2 (B) was available (copy), ZB#1 (S) was not available
		Letter No.	GT882735
Previous damage / Accident	Detectable	Repainting	None detectable
Inspection conditions	sufficient	Lifting equipment / pit	yes
Test drive	Not performed	Engine function test	Performed
Manufacturer key number/ type code number	8566 / BMT 03360		
Emission standard	EURO6;WLTP;AR;PI/CI;N1 III, N2	Fine dust sticker	
Permitted total weight	2,800 kg	Empty weight	

Tyres

Mounted tyres

#	Tyre size	Type of tyre	Manufacturer	Tread depth
1)	215/65 R15 102T	All-season tyres on Steel rim with wheel cover	Goodyear	5mm / 5mm
2)	215/65 R15 102T	All-season tyres on Steel rim with wheel cover	Goodyear	7mm / 7mm

Replacement

Typ	Tyre size	Type of tyre	Manufacturer	Tread depth
E	215/65 R15 102T	All-season tyres on Steel	Goodyear	8 mm

Legend: Tread depth information for tires on the left is in the first place, for tires on the right is in the second place on the axle in the direction of travel

Equipment

Standard equipment

- 1 battery
- Anti-lock braking system with electronic brake-force distribution (EBD)
- roof, flat
- Double-wing rear door with 180° opening angle (without window)
- Electronic Safety and Stability Program (ESP) with Traction Control (TCS)
- FordPass Connect
- Generator, 240 A
- Cruise control including leatherette steering wheel
- Glove compartment with lockable lid
- Front air conditioning
- Paint finish: Solid paint
- Cargo area floor: Vinyl floor covering, sealed, "Easy Clean"
- Emergency braking assistance including emergency brake light
- Particulate filter: diesel particulate filter
- Hubcaps
- Wheels: Steel wheels 6.5 J x 15 with 215/65 R 15 tires
- Sliding door entry light automatically when door is opened
- Mud flaps front and rear
- Side wall cladding half-height
- Seat belts
- Start-stop system
- Socket: 12-volt connection
- Immobiliser
- Central locking with remote control
- Driver's side airbag
- Exterior mirrors, electrically adjustable and heated
- On-board computer
- Headlining in driver's cab
- tachometer
- Third brake light
- Front window lifter, electric
- Ford Easy Fuel
- Warranty 2 years Ford new car warranty including the Ford Assistance mobility guarantee
- Transmission: 6-speed transmission
- Interior lighting with delay circuit
- Fuel tank 70 l
- Cargo area lighting with activatable switch-off delay
- Steering column, adjustable in height and reach
- Package: Style Color Package
- Parking pilot system front and rear including fog lights
- Radio: Audio system 13 additionally with DAB/DAB+
- Wheels/Tires: Spare wheel, steel wheel
- Headlights: Halogen projector headlights
- Sliding door: Sliding door, right
- Side protection strips
- Power steering
- Seats: Seat package 13 - partition (through-loading hatch), without window (Custom Truck Trend)
- Lashing eyes 8
- Heat-insulating glazing, slightly tinted
- auxiliary heater, electric

Extra equipment

- Forced cross ventilation
- LED lights in the cargo area
- Package: Visibility Package I (Trend) (heated windscreen - windshield washer sensor)
- Parking pilot system front and rear including fog lights (additionally with side sensors)
- Rear view camera (rear view camera with image transmission of the rear travel path in the multifunction display and coupling aid)
- Trailer hitch (fixed, 13-pin socket - including trailer stabilization (TSC))
- Wheels: All-season tires (suitable for winter use)
- Package: "Heavy Duty" cargo space protection package (hardwood cargo space floor (Delignit) with anti-slip coating including 3 recessed airline rails and high plastic side paneling)
- Radio: Audio system 17: Ford audio system with 4" multifunction display, additionally with DAB/DAB+ (Connected Radio (FM/AM) - 4" TFT multifunction display (10.16 cm screen diagonal) - Four speakers, antenna - Integrated control panel and audio remote control on the steering wheel - Bluetooth, USB port and hands-free system - with digital radio reception DAB/DAB+ (Digital Audio Broadcasting) - FordPass Connect including Live Traffic traffic information and Wi-Fi hotspot (up to 4G/LTE, for up to 10 mobile devices))



Brief expert findings

Documents submitted	At the time of the inspection, the registration certificate Part 2 (letter) was available, but the registration certificate Part 1 (certificate) was not. (Copy)
VIN comparison	The vehicle identification number (VIN) was read from the vehicle and its conformity with the submitted documents was verified during the inspection by the undersigned.
Inspection	The inspection conditions were sufficient for the assessment of the vehicle. Lifting equipment and a pit were available for examining the vehicle.
Test drive	No test drive/maneuvering was carried out during the inspection of the vehicle.
Engine function test	An engine test run was performed.

Value reducing factors

No.	Component group	Description
1	Door - front left side	Door edge - Scratch(es) - Smart repair
2	Sliding door, right	Sliding door - dent(s) - Smooth repair work
3	Side panel - rear left side	Side panel - Scratch(es) - Smart repair
4	Door - front right side	Door - Scratched - Paint

Wear and tear

No.	Component group	Description
1	Boot lid / rear door	Boot lid - dent(s) - No deduction
2	Bonnet	Bonnet - Stone chips - No deduction

The vehicle shows signs of wear commensurate with its age and use.

Missing parts

Description

Documents - Service book

Previous damages

No.	Previous damage	Extent of damage (Net)
1	Side right, Provided by user / customer, from 11 Nov 2024	5.778,29 €

Order/Scope of order

The order was placed to prepare a sales report for the vehicle described. This includes the following:

- Description of core relevant information about the vehicle
- Documentation of equipment features
(Delivery by third-party service providers)
- Documentation of damage, defects, missing parts
- Documentation of previous damage, unrepaired previous damage, repainting
- a brief visual or functional inspection of the equipment details if possible.
(Functional tests of driver assistance systems are not included in the scope of services!)
- a photo documentation of the vehicle



Basis for the order

This product is based on the guidelines for vehicle returns and valuations of light commercial vehicles from Alphabet Fuhrparkmanagement GmbH. The expert makes the explicit findings in each individual case objectively within the framework of the specified standards based on his or her own expertise.

The vehicle inspection takes place in a disassembled state.

Damage or defects that can only be detected during disassembly/diagnosis work or through advanced knowledge remain within the scope of the prognosis risk. An extended risk exists for concealed defects caused by fraudulent deception and not identifiable by the expert.

Damage or defects resulting from normal use or wear and tear of the vehicle will be accepted according to the applicable standard.

There was no explicit identification or monetary consideration of the expected features within the product.

Features which in their nature and severity slightly exceed normal use but do not constitute unacceptable damage will be documented and identified under signs of use if necessary.

Damage or defects which, according to the underlying standard, can no longer be attributed to normal use or wear and tear are listed in the product under "Depreciating Factors".

Depending on the product specification, a monetary ID can be provided. If this takes place, the costs can be 100% d or pro rata depending on the vehicle's age and mileage.

Previous damages

According to available information previous damages were repaired at the vehicle. Traces of repairs, which allow conclusions about the area of repair, were not recognizable during the inspection.



Figure 1: Diagonal front (left)



Figure 2: Diagonal front (right)



Figure 3: Diagonal rear (left)



Figure 4: Diagonal rear (right)



Figure 5: Interior - front



Figure 6: Interior - rear



Figure 7: Instrument cluster



Figure 8: Instrument panel



Figure 9: interior 360° view ([Online link](#))



Figure 10: Cargo area



Figure 11: VIN



Figure 12: Mounted tyres

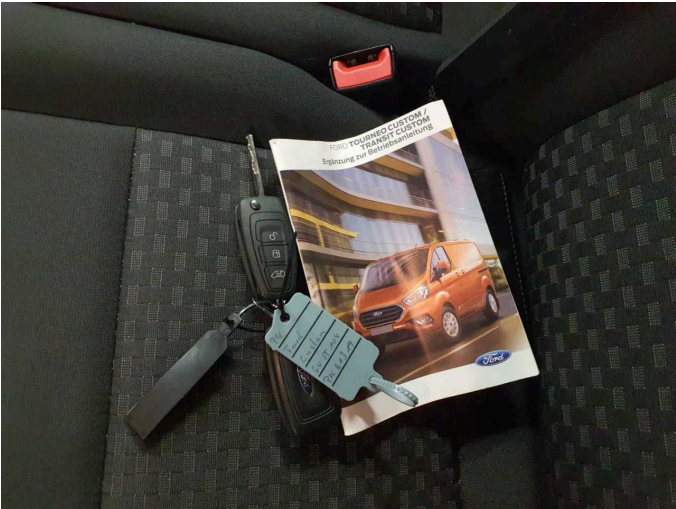


Figure 13: Documents



Figure 14: Navigation



Figure 15: Misc.



Figure 16: Misc.



Figure 17: Misc.



Figure 18: Misc.



Figure 19: Misc.

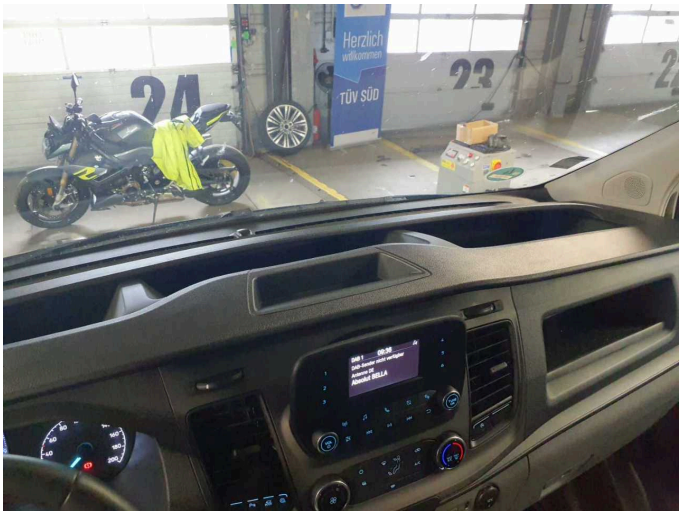


Figure 20: Misc.



Figure 21: Misc.



Figure 22: Misc.

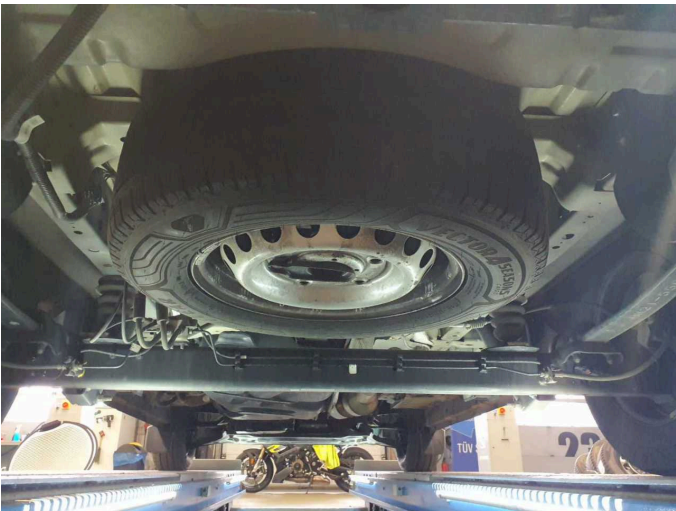


Figure 23: Misc.

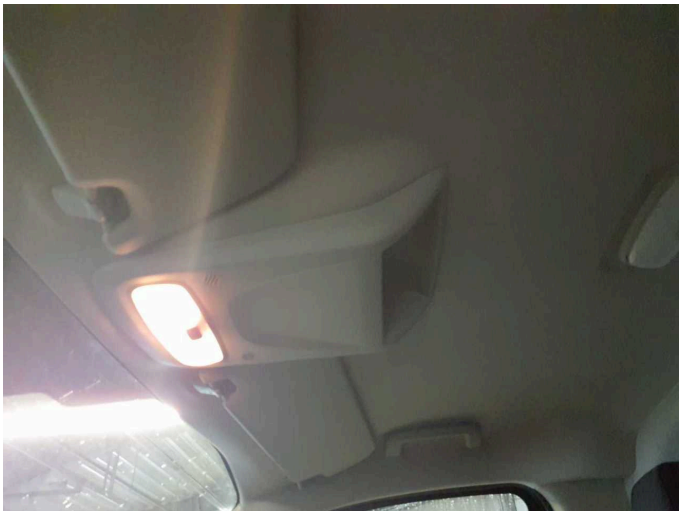


Figure 24: Misc.



Figure 25: Misc.

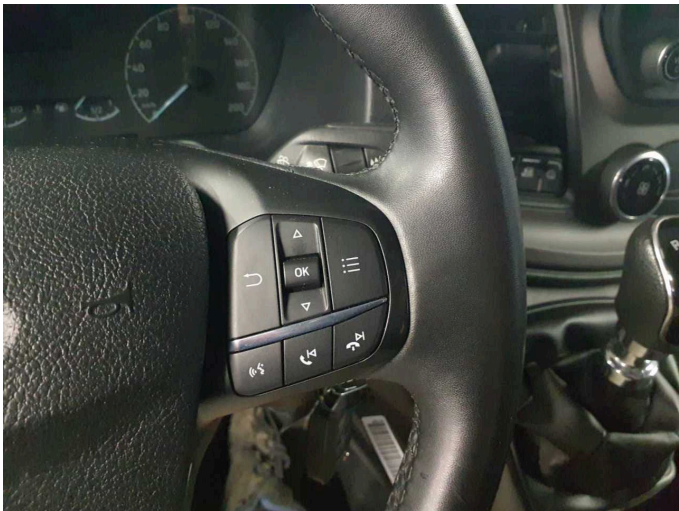


Figure 26: Misc.

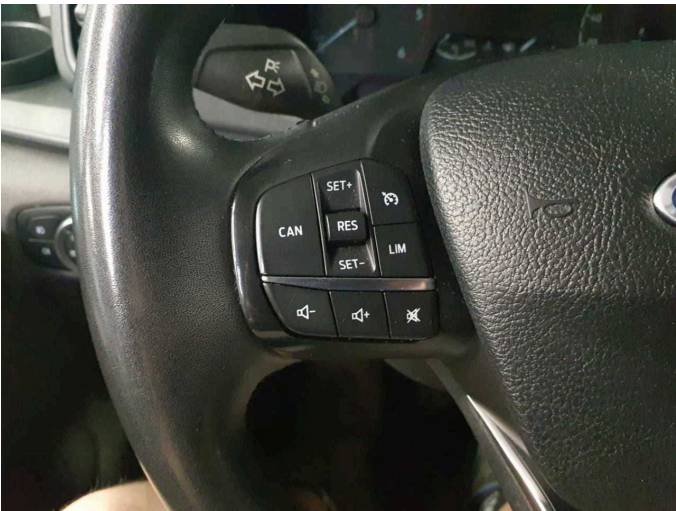


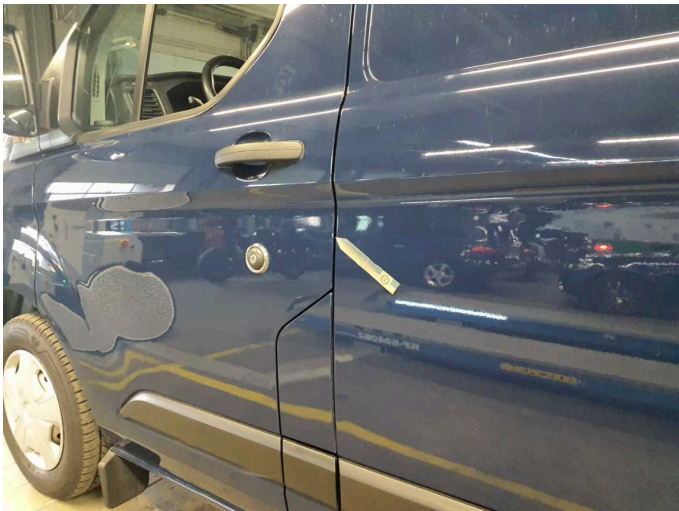
Figure 27: Misc.



Figure 28: Misc.



Figure 29: Misc.



Damage 1: Door - front left side: Door edge - Scratch(es) - Smart repair



Damage 1: Door - front left side: Door edge - Scratch(es) - Smart repair



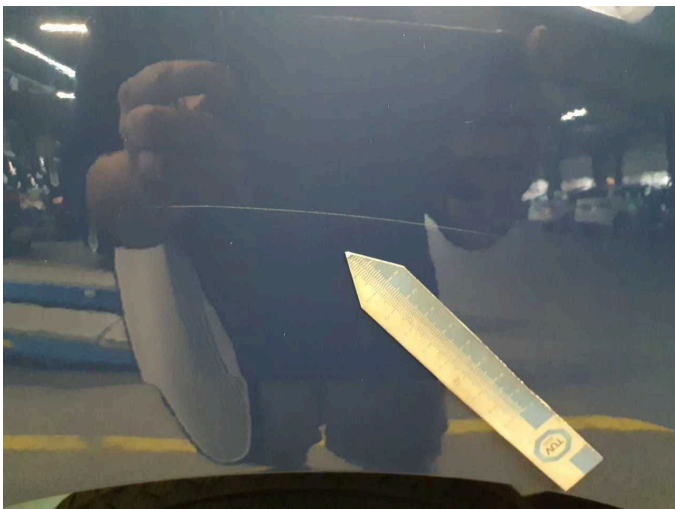
Damage 2: Sliding door, right: Sliding door - dent(s) - Smooth repair work



Damage 2: Sliding door, right: Sliding door - dent(s) - Smooth repair work



Damage 3: Side panel - rear left side: Side panel - Scratch(es) - Smart repair



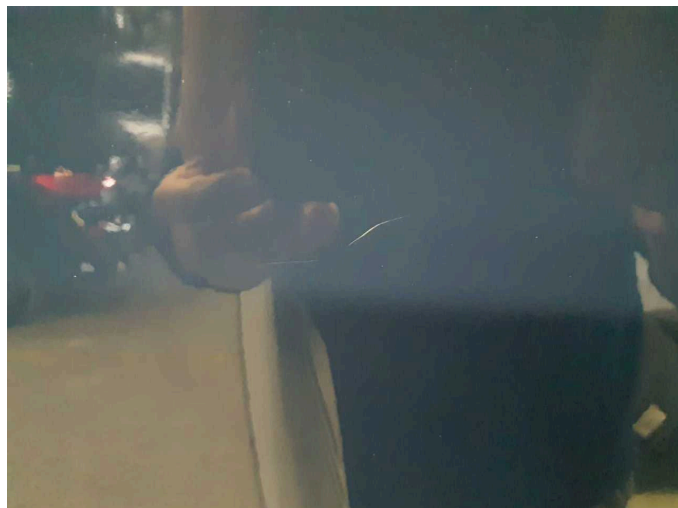
Damage 3: Side panel - rear left side: Side panel - Scratch(es) - Smart repair



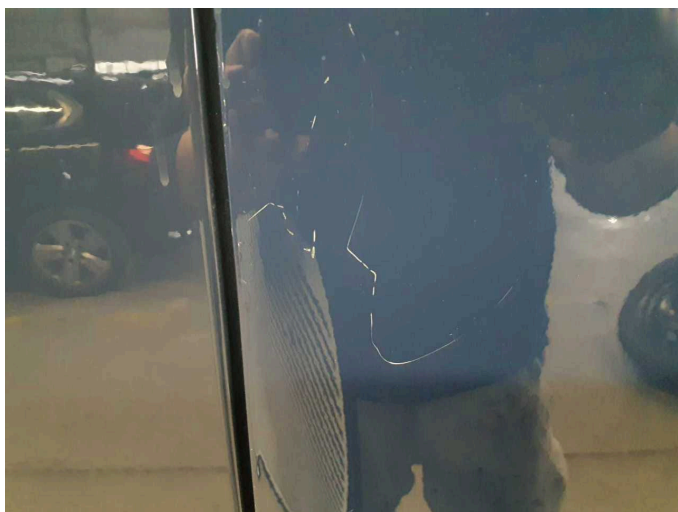
Damage 4: Door - front right side: Door - Scratched - Paint



Damage 4: Door - front right side: Door - Scratched - Paint



Damage 4: Door - front right side: Door - Scratched - Paint



Damage 4: Door - front right side: Door - Scratched - Paint



Wartungshistorie

(gemäß Auftraggeber Informationen)

Fahrgestellnummer: WF0YXXTTGYPK61319

Hersteller / Modell: FORD FORD Transit Custom 280 L1H1 LKW VA Trend

Datum	KM-Stand	Beschreibung
08.08.2024	40.127	Motoröl b. Wartung; Ölfilter ern; Regelwartungsdienst; Wartung Sonstiges