



Expertise

Protocol number: 41631286
Order No. / Reference: 25196447
Inspection date: 19 Sept 2025

Manufacturer: Ford	Model: Transit Custom 300 L2H1 LKW VA Trend
VIN: WF0YXXTTGYNG28326	



Vehicle details	
Manufacturer / Type / Model / Equipment	
Ford Transit Custom 300 L2H1 LKW VA Trend	
Vehicle Identification number	WF0YXXTTGYNG28326
Mileage (Read)	54,741 km
First registration	27 Apr 2023
Number of holders	1
Next periodical technical inspection	05/2027
(Report not on hand)	
Power / Engine displacement	77 kw / 1,995 ccm
Fuel type / Cylinder	Diesel / 4
Gearbox / Number of gears	Manual / 6
Type of drive	Front drive
Type of vehicle	Van
Colour / colour code	Frozen White
Doors / Seats	4 / 3
Upholstery type	Cloth
Colour of upholstery	Black



Vehicle details

Maintenance booklet / proof	digital proof / complete	Next maintenance in	30,000 km
Last maintenance on / at	02/2025 at 46,038 km		
Key is / should be	2 / 2	FZG documents	ZB#2 (B) was available (copy), ZB#1 (S) was not available
		Letter No.	GP508997
Previous damage / Accident	Detectable	Repainting	Detectable
Inspection conditions	sufficient	Lifting equipment / pit	yes
Test drive	Not performed	Engine function test	Performed
Manufacturer key number/ type code number	8566 / BMT 03335		
Emission standard	EURO6;WLTP;AR;PI/CI;N1 III, N2	Fine dust sticker	
Permitted total weight	3,000 kg	Empty weight	

Tyres

Mounted tyres

#	Tyre size	Type of tyre	Manufacturer	Tread depth
1)	215/65 R15 104T	Summer tyres on Steel rim with wheel cover	Goodyear	5mm / 5mm
2)	215/65 R15 104T	Summer tyres on Steel rim with wheel cover	Goodyear	5mm / 5mm

Additional tyres

#	Tyre size	Type of tyre	Manufacturer	Tread depth
1)	215/65 R15 104T	Winter tyres on Steel	Goodyear	5mm / 5mm
2)	215/65 R15 104T	Winter tyres on Steel	Goodyear	5mm / 5mm

Replacement

Typ	Tyre size	Type of tyre	Manufacturer	Tread depth
E	215/65 R15 104T	Summer tyres on Steel	Goodyear	7 mm

Legend: Tread depth information for tires on the left is in the first place, for tires on the right is in the second place on the axle in the direction of travel

Equipment

Standard equipment

- 1 battery
- Anti-lock braking system with electronic brake-force distribution (EBD)
- roof, flat
- tachometer
- Electronic Safety and Stability Program (ESP) with Traction Control (TCS)
- FordPass Connect
- Generator, 240 A
- Transmission: 6-speed transmission
- Interior lighting with delay circuit
- Fuel tank 70 l
- Cargo area lighting with activatable switch-off delay
- Emergency braking assistance including emergency brake light
- Particulate filter: diesel particulate filter
- Wheels/Tires: Spare wheel, steel wheel
- Headlights: Halogen projector headlights
- Sliding door: Sliding door, right
- Side protection strips
- Power steering
- Start-stop system
- Lashing eyes 8
- Heat-insulating glazing, slightly tinted
- auxiliary heater, electric
- Driver's side airbag
- Exterior mirrors, electrically adjustable and heated
- On-board computer
- Headlining in driver's cab
- Third brake light
- Front window lifter, electric
- Ford Easy Fuel
- Warranty 2-year Ford new car warranty including the Ford Assistance mobility guarantee
- Glove compartment with lockable lid
- Front air conditioning
- Paint finish: Solid paint
- Steering column, adjustable in height and reach
- Package: Style Color Package
- Parking pilot system front and rear including fog lights
- Hubcaps
- Wheels: Steel wheels 6.5 J x 15 with 215/65 R 15 tires
- Sliding door entry light automatically when door is opened
- Mud flaps front and rear
- Side wall cladding half-height
- Seat belts
- Socket: 12-volt connection
- Immobiliser
- Central locking with remote control

Extra equipment

- LED lights in the cargo area
- Package: Cargo compartment protection package (side wall paneling, high, hardboard - vinyl floor paneling "Easy Clean")
- Paintwork: Special paintwork in standard color
- Radio: Audio system 24: Ford audio system including Ford SYNC3 with AppLink, DAB/DAB+, navigation system (FM/AM radio, 8" touchscreen multifunction display (20.32 cm), 4 speakers, FordPass Connect Wi-Fi hotspot, integrated control panel and audio remote control on the steering wheel, Ford SYNC 3 with touchscreen (hands-free system with voice command control, SMS reading/sending function, Bluetooth, emergency call assistant, etc.), AppLink (advanced voice control, private mode, support for Android Auto and Apple CarPlay, capacitive touchscreen technology, etc.), dynamic navigation, lane recommendation, road map for Western Europe)
- Second key, foldable, with remote control
- Speed limiter 130 km/h
- Voltage converter (230 V/150 Watt (socket))
- Wooden floor L2
- Package: Visibility Package III (electrically adjustable and heated exterior mirrors - heated windshield - windshield washer fluid sensor - electrically folding exterior mirrors - windshield wipers with rain sensor - headlight assist with day/night sensor - lane departure warning with drowsiness warning and high beam assist - rear view camera - audio system with Connected Radio, DAB/DAB+, FordPass Connect 8" touchscreen, antenna control panel and audio remote control on the steering wheel - support for Android and Apple CarPlay)
- S2" lashing rails / 2x straps / 2x locking bars / Que
- Seats: Seat package 17A - Partition (through-loading hatch), without window (Custom Truck Trend (driver's seat, 4-way adjustable (forward/backward, backrest, seat cushion angle, height) - Double passenger seat with storage compartment under individually foldable seat cushions - Height-adjustable headrests - Tray integrated in the double passenger seat (fold-out) - Seat heating for driver - Seat heating for passenger (outer seat) - Inside armrest for driver - Manual lumbar support (driver's seat) - Passenger and side airbags and head/shoulder airbags in the front - TREND seat cover: fabric)



Brief expert findings

Documents submitted	At the time of the inspection, the registration certificate Part 2 (letter) was available, but the registration certificate Part 1 (certificate) was not. (Copy)
VIN comparison	The vehicle identification number (VIN) was read from the vehicle and its conformity with the submitted documents was verified during the inspection by the undersigned.
Inspection	The inspection conditions were sufficient for the assessment of the vehicle. Lifting equipment and a pit were available for examining the vehicle.
Test drive	No test drive/maneuvering was carried out during the inspection of the vehicle.
Engine function test	An engine test run was performed.

Value reducing factors

No.	Component group	Description
1	Misc.	Main inspection - No evidence - No deduction
2	Wheel / tyres	Wheel cover - front right side - Missing - Replace
3	Trim / covers	Boot lid - interior trim (Rechts oben) - Broken / torn - Replace
4	Trim / covers	Boot lid - interior trim (Links) - Broken / torn - Replace
5	Rear bumper	Bumper - rear left side - Scratch(es) - Smart repair
6	Body	B-pillar - left side - Scratch(es) - Smart repair
7	Body	Body - Glued / labelled - De-glue / neutralise
8	Seat - front	Seat cover - left side - Broken / torn - Replace
9	Boot lid / rear door	Boot lid (Links) - Scratch(es) - Paint
10	Boot lid / rear door	Boot lid (Rechts) - Scratch(es) - Paint

Wear and tear

No.	Component group	Description
1	Body	Body - Scratch(es) - No deduction
2	Front bumper	Front bumper - Scratch(es) - No deduction
3	Bonnet	Bonnet - Stone chips - No deduction
4	Rear bumper	Rear bumper (unpainted) - Scratch(es) - No deduction
5	Fuel system	Tank flap - Scratch(es) - Conditioning

The vehicle shows signs of wear commensurate with its age and use.

Missing parts

Description

Documents - Service book

Previous damages

No.	Previous damage	Extent of damage (Net)
1	Side right, Provided by user / customer, from 28 Nov 2023	2.373,41 €
2	Side right, Provided by user / customer, from 16 Feb 2025	2.769,01 €
3	Rear, Side - left, Provided by user / customer, from 20 Nov 2023	4.062,84 €

Repainting



No. Repainting

1 Side panel - rear left side, Side panel - rear right side, Door - front right side, Professionally carried out, Invoice of repair done Non-existent

Paint coat thickness measurement

Side panel - rear left side	176 µm	Side panel - rear right side	358 µm
Door - front right side	168 µm		

Order/Scope of order

The order was placed to prepare a sales report for the vehicle described. This includes the following:

- Description of core relevant information about the vehicle
- Documentation of equipment features
(*Delivery by third-party service providers*)
- Documentation of damage, defects, missing parts
- Documentation of previous damage, unrepaired previous damage, repainting
- a brief visual or functional inspection of the equipment details if possible.
(*Functional tests of driver assistance systems are not included in the scope of services!*)
- a photo documentation of the vehicle

Basis for the order

This product is based on the guidelines for vehicle returns and valuations of light commercial vehicles from Alphabet Fuhrparkmanagement GmbH. The expert makes the explicit findings in each individual case objectively within the framework of the specified standards based on his or her own expertise.

The vehicle inspection takes place in a disassembled state.

Damage or defects that can only be detected during disassembly/diagnosis work or through advanced knowledge remain within the scope of the prognosis risk. An extended risk exists for concealed defects caused by fraudulent deception and not identifiable by the expert.

Damage or defects resulting from normal use or wear and tear of the vehicle will be accepted according to the applicable standard.

There was no explicit identification or monetary consideration of the expected features within the product.

Features which in their nature and severity slightly exceed normal use but do not constitute unacceptable damage will be documented and identified under signs of use if necessary.

Damage or defects which, according to the underlying standard, can no longer be attributed to normal use or wear and tear are listed in the product under "Depreciating Factors".

Depending on the product specification, a monetary ID can be provided. If this takes place, the costs can be 100% d or pro rata depending on the vehicle's age and mileage.

Previous damages

According to available information previous damages were repaired at the vehicle. Traces of repairs, which allow conclusions about the area of repair, were not recognizable during the inspection.

Comments

Wartungshistorie gemäß Auftraggeber Informationen.



Figure 1: Diagonal front (left)



Figure 2: Diagonal front (right)



Figure 3: Diagonal rear (left)



Figure 4: Diagonal rear (right)



Figure 5: Interior - front

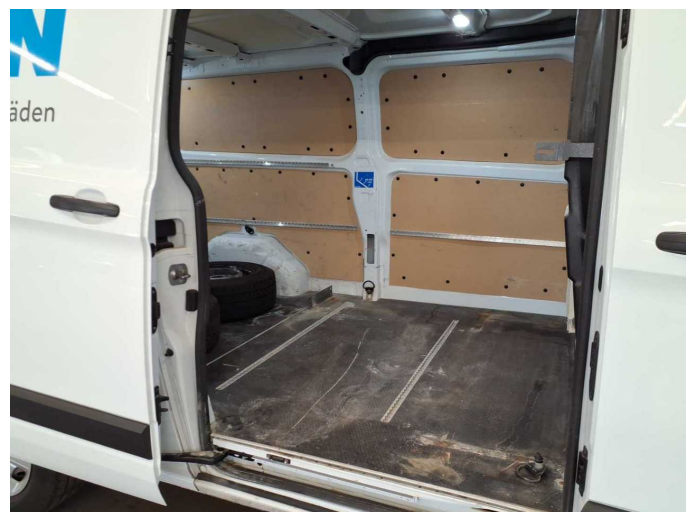


Figure 6: Interior - rear



Figure 7: Instrument cluster



Figure 8: Instrument panel



Figure 9: Interior 360° view



Figure 10: Cargo area



Figure 11: VIN



Figure 12: Mounted tyres

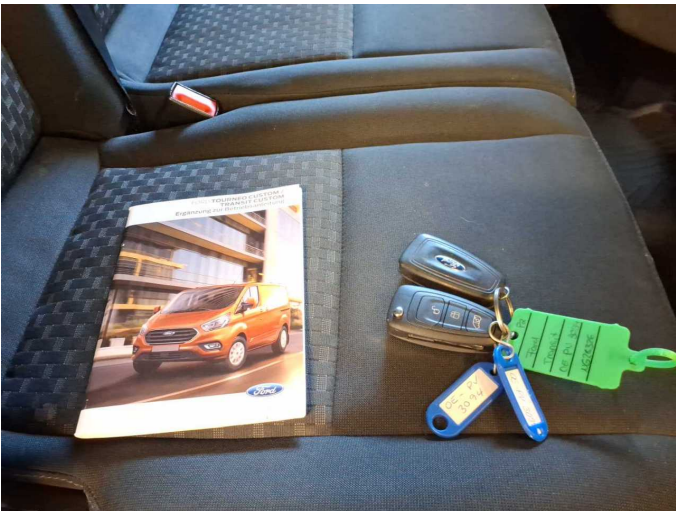


Figure 13: Documents



Figure 14: Additional tyres



Figure 15: Navigation



Figure 16: Misc.



Figure 17: Misc.



Figure 18: Misc.



Figure 19: Misc.



Figure 20: Misc.



Figure 21: Misc.

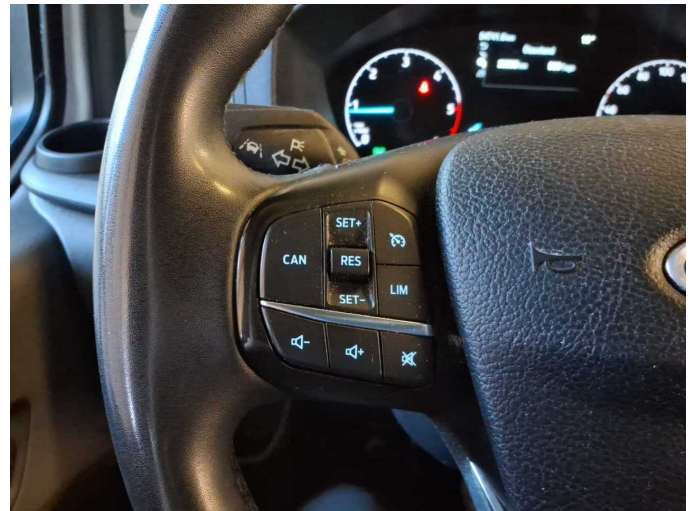


Figure 22: Misc.



Figure 23: Misc.

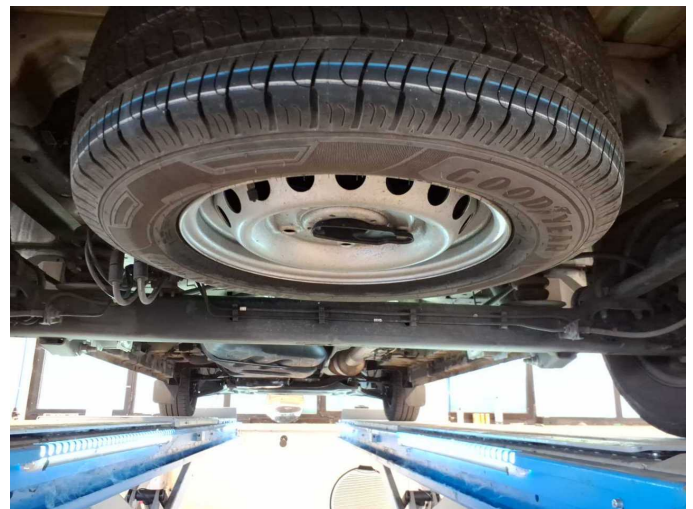


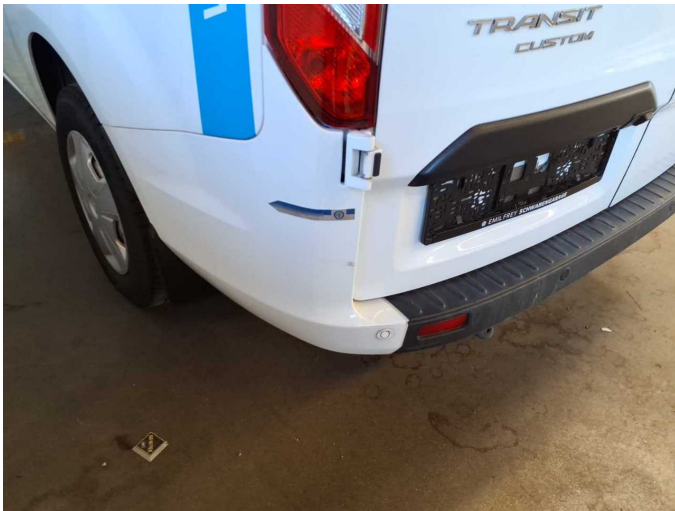
Figure 24: Misc.



Damage 3: Trim / covers: Boot lid - interior trim (Rechts oben) - Broken / torn - Replace



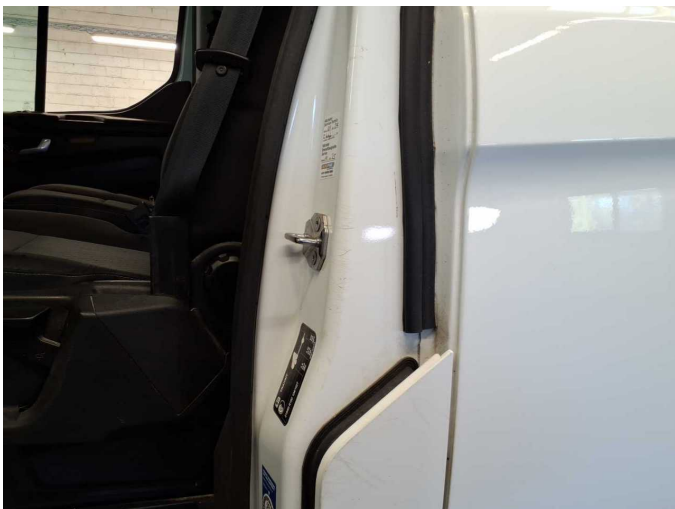
Damage 4: Trim / covers: Boot lid - interior trim (Links) - Broken / torn - Replace



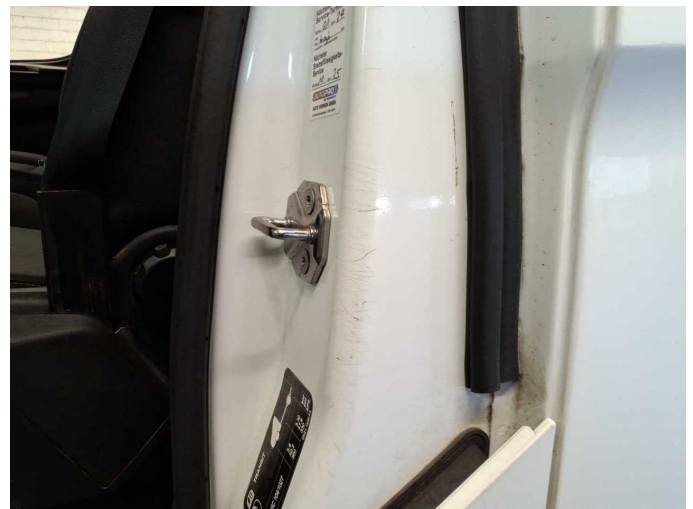
Damage 5: Rear bumper: Bumper - rear left side - Scratch(es) - Smart repair



Damage 5: Rear bumper: Bumper - rear left side - Scratch(es) - Smart repair



Damage 6: Body: B-pillar - left side - Scratch(es) - Smart repair



Damage 6: Body: B-pillar - left side - Scratch(es) - Smart repair



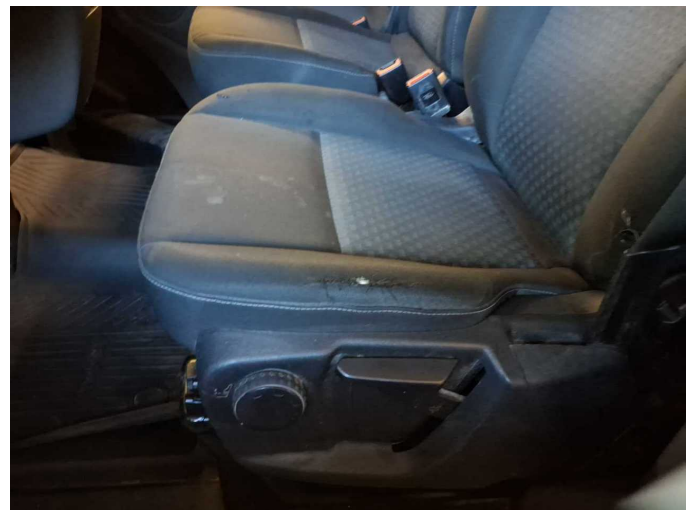
Damage 7: Body: Body - Glued / labelled - De-glue / neutralise



Damage 7: Body: Body - Glued / labelled - De-glue / neutralise



Damage 7: Body: Body - Glued / labelled - De-glue / neutralise



Damage 8: Seat - front: Seat cover - left side - Broken / torn - Replace



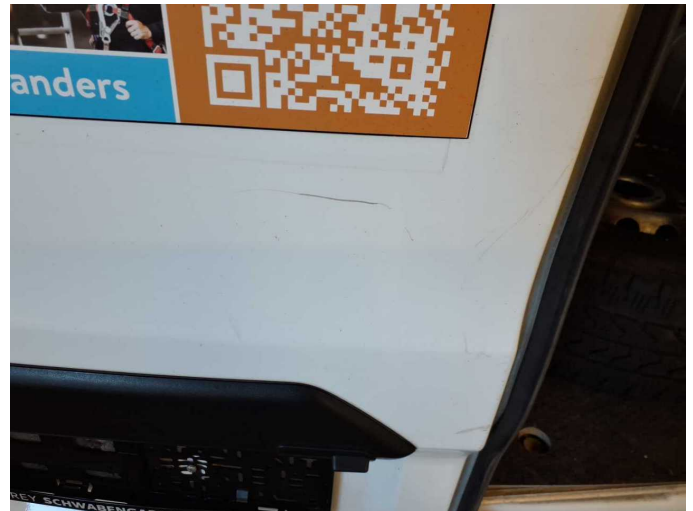
Damage 8: Seat - front: Seat cover - left side - Broken / torn - Replace



Damage 8: Seat - front: Seat cover - left side - Broken / torn - Replace



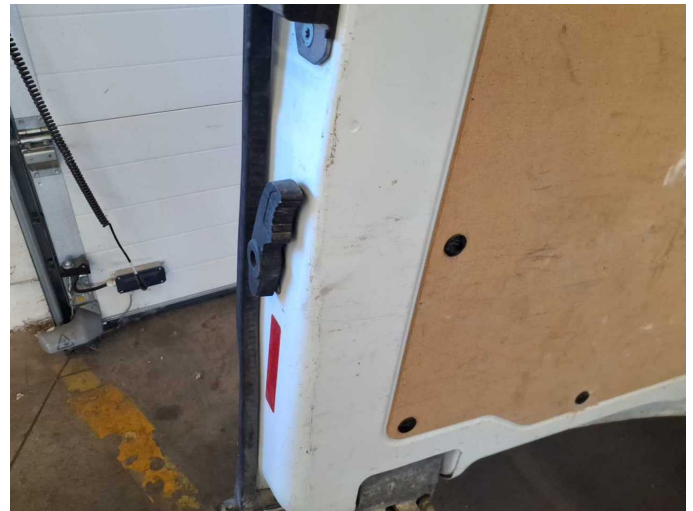
Damage 9: Boot lid / rear door: Boot lid (Links) - Scratch(es) - Paint



Damage 9: Boot lid / rear door: Boot lid (Links) - Scratch(es) - Paint



Damage 9: Boot lid / rear door: Boot lid (Links) - Scratch(es) - Paint



Damage 9: Boot lid / rear door: Boot lid (Links) - Scratch(es) - Paint



Damage 9: Boot lid / rear door: Boot lid (Links) - Scratch(es) - Paint



Damage 10: Boot lid / rear door: Boot lid (Rechts) - Scratch(es) - Paint



Damage 10: Boot lid / rear door: Boot lid (Rechts) - Scratch(es) - Paint



Damage 10: Boot lid / rear door: Boot lid (Rechts) - Scratch(es) - Paint



Damage 10: Boot lid / rear door: Boot lid (Rechts) - Scratch(es) - Paint



Damage 10: Boot lid / rear door: Boot lid (Rechts) - Scratch(es) - Paint



Damage 10: Boot lid / rear door: Boot lid (Rechts) - Scratch(es) - Paint



Wear and tear 5: Fuel system: Tank flap - Scratch(es) - Conditioning



Wear and tear 5: Fuel system: Tank flap - Scratch(es) - Conditioning



Repainting 1: Side panel - rear left side, Side panel - rear right side, Door - front right side



Repainting 1: Side panel - rear left side, Side panel - rear right side, Door - front right side



Repainting 1: Side panel - rear left side, Side panel - rear right side, Door - front right side



Repainting 1: Side panel - rear left side, Side panel - rear right side, Door - front right side



Repainting 1: Side panel - rear left side, Side panel - rear right side, Door - front right side



Repainting 1: Side panel - rear left side, Side panel - rear right side,
Door - front right side



Wartungshistorie

(gemäß Auftraggeber Informationen)

Fahrgestellnummer: WF0YXXTTGYNG28326

Hersteller / Modell: FORD FORD Transit Custom 300 L2H1 LKW VA Trend

Datum	KM-Stand	Beschreibung
12.05.2025	49.157	Bremsinspektion vo + hi; Bremsbelagfühler ern; Bremsflüssigkeit; Bremsflüssigkeit ern; Bremsklötze hinten; Bremsklötze vorne; HU + AU; Systemtest/Eigendiagnose
03.02.2025	46.038	Motoröl b. Wartung; Ölfilter ern; Regelwartungsdienst