



Expertise

Protocol number: 41678697
Order No. / Reference: 25228393
Inspection date: 24 Sept 2025

Manufacturer: Ford	Model: Transit Custom 300 L2H1 LKW VA Trend
VIN: WF0YXXTTGYNA83678	



Vehicle details	
Manufacturer / Type / Model / Equipment	
Ford Transit Custom 300 L2H1 LKW VA Trend	
Vehicle Identification number	WF0YXXTTGYNA83678
Mileage (Read)	61,881 km
First registration	27 Apr 2023
Number of holders	1
Next periodical technical inspection	07/2027
(Report on hand)	
Power / Engine displacement	77 kw / 1,995 ccm
Fuel type / Cylinder	Diesel / 4
Gearbox / Number of gears	Manual / 6
Type of drive	Front drive
Type of vehicle	Van
Colour / colour code	Frozen White
Doors / Seats	4 / 3
Upholstery type	Cloth
Colour of upholstery	Black
Re/Import	no
Driving readiness	Roadworthy



Vehicle details

Maintenance booklet / proof	digital proof / complete	Next maintenance in	20,000 km
Last maintenance on / at	09/2024 at 43,072 km		
Key is / should be	2 / 2	FZG documents	ZB#2 (B) was available (copy), ZB#1 (S) was not available
		Letter No.	GP499369
Previous damage / Accident	Detectable	Repainting	Detectable
Inspection conditions	sufficient	Lifting equipment / pit	yes
Test drive	Not performed	Engine function test	Performed
Driving readiness	Roadworthy		
Manufacturer key number/ type code number	8566 / BMT 03335		
Emission standard	EURO6;WLTP;AR;PI/CI;N1 III, N2	Fine dust sticker	
Permitted total weight	3,000 kg	Empty weight	

Tyres

Mounted tyres

#	Tyre size	Type of tyre	Manufacturer	Tread depth
1)	215/65 R15 104T	Winter tyres on Steel rim with wheel cover	Goodyear	5mm / 5mm
2)	215/65 R15 104T	Winter tyres on Steel rim with wheel cover	Goodyear	5mm / 5mm

Additional tyres

#	Tyre size	Type of tyre	Manufacturer	Tread depth
1)	215/65 R15 104T	Summer tyres on Steel	Goodyear	6mm / 6mm
2)	215/65 R15 104T	Summer tyres on Steel	Goodyear	6mm / 6mm

Replacement

Typ	Tyre size	Type of tyre	Manufacturer	Tread depth
E	215/65 R15 104T	Summer tyres on Steel	Goodyear	8 mm

Legend: Tread depth information for tires on the left is in the first place, for tires on the right is in the second place on the axle in the direction of travel

Equipment

Standard equipment

- | | |
|--|--|
| <ul style="list-style-type: none"> • 1 battery • Anti-lock braking system with electronic brake-force distribution (EBD) • roof, flat • Double-wing rear door with 180° opening angle (without window) • Electronic Safety and Stability Program (ESP) with Traction Control (TCS) • FordPass Connect • Generator, 240 A • Cruise control including leatherette steering wheel • Glove compartment with lockable lid • Front air conditioning • Cargo area lighting with activatable switch-off delay • Steering column, adjustable in height and reach • Package: Style Color Package • Parking pilot system front and rear including fog lights • Radio: Audio system 13 additionally with DAB/DAB+ • Wheels/Tires: Spare wheel, steel wheel • Headlights: Halogen projector headlights • Sliding door: Sliding door, right • Side protection strips • Power steering • Seats: Seat package 13 - partition (through-loading hatch), without window (Custom Truck Trend) • Lashing eyes 8 • Heat-insulating glazing, slightly tinted • auxiliary heater, electric | <ul style="list-style-type: none"> • Driver's side airbag • Exterior mirrors, electrically adjustable and heated • On-board computer • Headlining in driver's cab • tachometer • Third brake light • Front window lifter, electric • Ford Easy Fuel • Warranty 2-year Ford new car warranty including the Ford Assistance mobility guarantee • Transmission: 6-speed transmission • Interior lighting with delay circuit • Fuel tank 70 l • Cargo area floor: Vinyl floor covering, sealed, "Easy Clean" • Emergency braking assistance including emergency brake light • Particulate filter: diesel particulate filter • Hubcaps • Wheels: Steel wheels 6.5 J x 15 with 215/65 R 15 tires • Sliding door entry light automatically when door is opened • Mud flaps front and rear • Side wall cladding half-height • Seat belts • Start-stop system • Socket: 12-volt connection • Immobiliser • Central locking with remote control |
|--|--|

Extra equipment

- | | |
|---|--|
| <ul style="list-style-type: none"> • Exterior mirrors, electrically adjustable, heated and folding (with integrated indicators) • Speed limiter 130 km/h • LED lights in the cargo area • Package: Visibility Package III (electrically adjustable and heated exterior mirrors - heated windshield - windshield washer fluid sensor - electrically folding exterior mirrors - windshield wipers with rain sensor - headlight assist with day/night sensor - lane departure warning with drowsiness warning and high beam assist - rear view camera - audio system with Connected Radio, DAB/DAB+, FordPass Connect 8" touchscreen, antenna control panel and audio remote control on the steering wheel - support for Android and Apple CarPlay) • Rear view camera (rear view camera with image transmission of the rear travel path in the multifunction display and coupling aid) | <ul style="list-style-type: none"> • Double rear door with 180° opening angle (with window) (with heated rear windows) • Paintwork: Special paintwork in standard color • Package: Load compartment protection package (side wall lining, high, hardboard - vinyl floor covering "Easy Clean") • Radio: Audio system 24: Ford audio system including Ford SYNC3 with AppLink, DAB/DAB+, navigation system (FM/AM radio, 8" touchscreen multifunction display (20.32 cm), 4 speakers, FordPass Connect Wi-Fi hotspot, integrated control panel and audio remote control on the steering wheel, Ford SYNC 3 with touchscreen (hands-free system with voice command control, SMS reading/sending function, Bluetooth, emergency call assistant, etc.), AppLink (advanced voice control, private mode, support for Android Auto and Apple CarPlay, capacitive touchscreen technology, etc.), dynamic navigation, lane recommendation, road map for Western Europe) |
|---|--|



- | | |
|--|--|
| <ul style="list-style-type: none"> • Seats: Seat package 17A - Partition (through-loading hatch), with window (Custom Truck Trend) (Driver's seat, 4-way adjustable (forward/backward, backrest, seat cushion angle, height) - Double passenger seat with storage compartment under individually foldable seat cushions - Height-adjustable headrests - Tray integrated in the double passenger seat (fold-out) - Seat heating for driver - Seat heating for passenger (outer seat) - Inside armrest for driver - Manual lumbar support (driver's seat) - Passenger and side airbags and head/shoulder airbags in the front - TREND seat cover: fabric) • Voltage converter (230 V/150 Watt (socket)) • Second key, foldable, with remote control | <ul style="list-style-type: none"> • Seats: Seat package 17A - Partition (through-loading hatch), without window (Custom Truck Trend (driver's seat, 4-way adjustable (forward/backward, backrest, seat cushion angle, height) - Double passenger seat with storage compartment under individually foldable seat cushions - Height-adjustable headrests - Tray integrated in the double passenger seat (fold-out) - Seat heating for driver - Seat heating for passenger (outer seat) - Inside armrest for driver - Manual lumbar support (driver's seat) - Passenger and side airbags and head/shoulder airbags in the front - TREND seat cover: fabric) |
|--|--|

Brief expert findings

Documents submitted	At the time of the inspection, the registration certificate Part 2 (letter) was available, but the registration certificate Part 1 (certificate) was not. (Copy)
VIN comparison	The vehicle identification number (VIN) was read from the vehicle and its conformity with the submitted documents was verified during the inspection by the undersigned.
Inspection	The inspection conditions were sufficient for the assessment of the vehicle. Lifting equipment and a pit were available for examining the vehicle.
Test drive	No test drive/maneuvering was carried out during the inspection of the vehicle.
Engine function test	An engine test run was performed.
Driving readiness	The vehicle was drivable at the time of inspection.

Value reducing factors

No.	Component group	Description
1	Side panel - rear left side	Side panel - Scratch(es) - Smart repair
2	Door - front left side	Door edge - Scratch(es) - Smart repair
3	Body	Body - Glued / labelled - De-glue / neutralise

Wear and tear

No.	Component group	Description
1	Boot lid / rear door	Boot lid - Scratch(es) - No deduction
2	Bonnet	Bonnet - Stone chips - No deduction
3	Vehicle glazing	Windscreen - Stone chips - No deduction
4	Front bumper	Front bumper - Stone chips - No deduction
5	Rear bumper	Rear bumper - Scratch(es) - No deduction
6	Interior	Interior - Scratch(es) - No deduction

The vehicle shows signs of wear commensurate with its age and use.

Previous damages

No.	Previous damage	Extent of damage (Net)
1	Side right, Provided by user / customer, from 2 Jan 2024	3.613,60 €
2	Front, Provided by user / customer, from 7 Nov 2023	3.900,36 €
3	Rear, Side - left, Provided by user / customer, from 31 Oct 2023	8.131,68 €

Repainting



No. Repainting

1 Door - rear right side, Professionally carried out, Invoice of repair done Non-existent

Paint coat thickness measurement

Door - rear right side 252 µm |

Order/Scope of order

The order was placed to prepare a sales report for the vehicle described. This includes the following:

- Description of core relevant information about the vehicle
- Documentation of equipment features
(*Delivery by third-party service providers*)
- Documentation of damage, defects, missing parts
- Documentation of previous damage, unrepaired previous damage, repainting
- a brief visual or functional inspection of the equipment details if possible.
(*Functional tests of driver assistance systems are not included in the scope of services!*)
- a photo documentation of the vehicle

Basis for the order

This product is based on the guidelines for vehicle returns and valuations of light commercial vehicles from Alphabet Fuhrparkmanagement GmbH. The expert makes the explicit findings in each individual case objectively within the framework of the specified standards based on his or her own expertise.

The vehicle inspection takes place in a disassembled state.

Damage or defects that can only be detected during disassembly/diagnosis work or through advanced knowledge remain within the scope of the prognosis risk. An extended risk exists for concealed defects caused by fraudulent deception and not identifiable by the expert.

Damage or defects resulting from normal use or wear and tear of the vehicle will be accepted according to the applicable standard.

There was no explicit identification or monetary consideration of the expected features within the product.

Features which in their nature and severity slightly exceed normal use but do not constitute unacceptable damage will be documented and identified under signs of use if necessary.

Damage or defects which, according to the underlying standard, can no longer be attributed to normal use or wear and tear are listed in the product under "Depreciating Factors".

Depending on the product specification, a monetary ID can be provided. If this takes place, the costs can be 100% d or pro rata depending on the vehicle's age and mileage.

Previous damages

According to available information previous damages were repaired at the vehicle. Traces of repairs, which allow conclusions about the area of repair, were not recognizable during the inspection.

Comments

- Winterradsatz ist kein Bestandteil des Auslieferumfangs.
- Für den montierten Radsatz wurde kein Nachweiß erbracht.



Figure 1: Diagonal front (left)



Figure 2: Diagonal front (right)



Figure 3: Diagonal rear (left)



Figure 4: Diagonal rear (right)



Figure 5: Interior - front



Figure 6: Interior - rear



Figure 7: Instrument cluster



Figure 8: Instrument panel



Figure 9: Interior 360° view



Figure 10: Cargo area

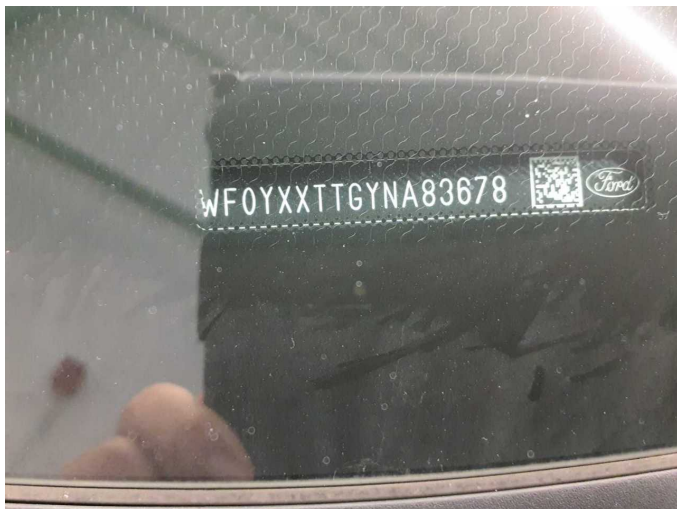


Figure 11: VIN



Figure 12: Mounted tyres

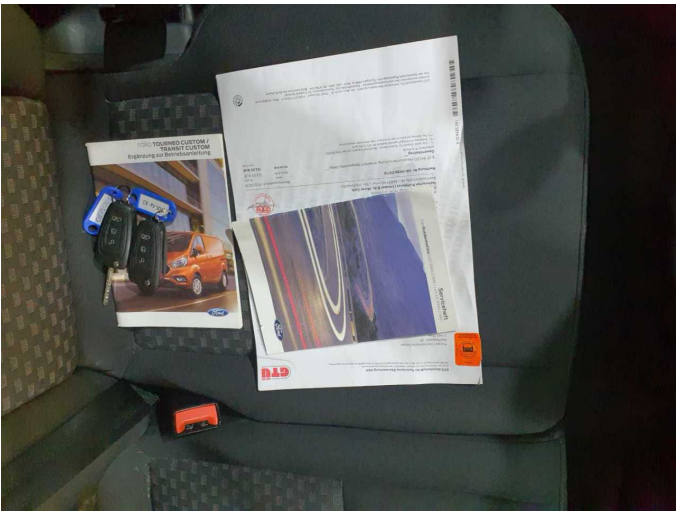


Figure 13: Documents

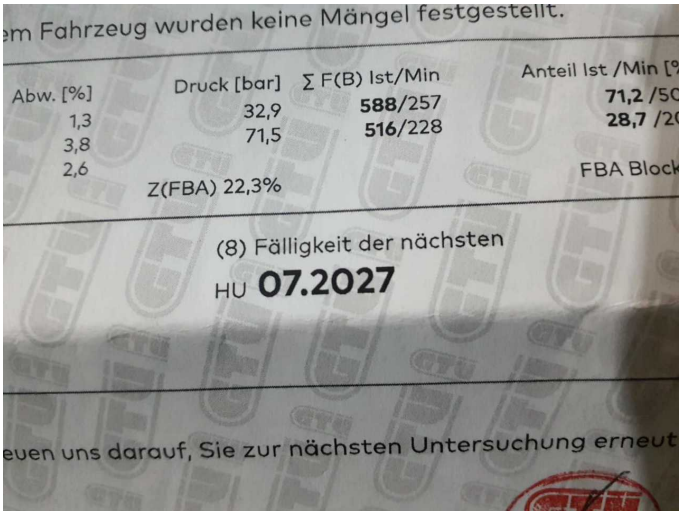


Figure 14: Documents



Figure 15: Documents



Figure 16: Additional tyres



Figure 17: Navigation



Figure 18: Misc.

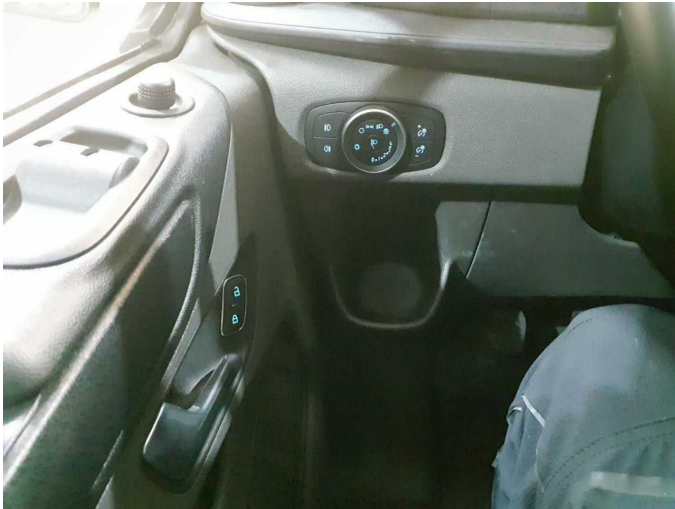


Figure 19: Misc.



Figure 20: Misc.



Figure 21: Misc.



Figure 22: Misc.



Figure 23: Misc.



Figure 24: Misc.



Figure 25: Misc.



Figure 26: Misc.



Figure 27: Misc.



Figure 28: Misc.



Damage 1: Side panel - rear left side: Side panel - Scratch(es) - Smart repair



Damage 1: Side panel - rear left side: Side panel - Scratch(es) - Smart repair



Damage 2: Door - front left side: Door edge - Scratch(es) - Smart repair



Damage 2: Door - front left side: Door edge - Scratch(es) - Smart repair



Damage 3: Body: Body - Glued / labelled - De-glue / neutralise



Damage 3: Body: Body - Glued / labelled - De-glue / neutralise



Damage 3: Body: Body - Glued / labelled - De-glue / neutralise



Damage 3: Body: Body - Glued / labelled - De-glue / neutralise



Repainting 1: Door - rear right side



Repainting 1: Door - rear right side



Wartungshistorie

(gemäß Auftraggeber Informationen)

Fahrgestellnummer: WF0YXXTTGYNA83678

Hersteller / Modell: FORD FORD Transit Custom 300 L2H1 LKW VA Trend

Datum	KM-Stand	Beschreibung
07.07.2025	61.471	AU; Keilrippenriemen; Reparatur Sonstiges; Systemtest/Eigendiagnose
18.09.2024	43.072	Bremsinspektion vo + hi; Bremsflüssigkeit; Bremsflüssigkeit ern; Bremsklötze hinten; Bremsklötze vorne; Luftfiltereinsatz ern; Motoröl b. Wartung; Ölfilter ern; Regelwartungsdienst; Wartung Sonstiges