



Expertise

Protocol number: 41610465
Order No. / Reference: 25193734
Inspection date: 18 Sept 2025

Manufacturer: Ford

Model: Transit 310 L2H3 Lkw VA Trend

VIN: WF0XXXTTGXJB10898



Vehicle details	
Manufacturer / Type / Model / Equipment	
Ford Transit 310 L2H3 Lkw VA Trend	
Vehicle Identification number	WF0XXXTTGXJB10898
Mileage (Read)	122,154 km
First registration	8 Feb 2019
Number of holders	2
Power / Engine displacement	77 kw / 1,995 ccm
Fuel type / Cylinder	Diesel / 4
Gearbox / Number of gears	Manual / 6
Type of drive	Front drive
Type of vehicle	Van
Colour / colour code	Silber-Metallic
Doors / Seats	4 / 3
Upholstery type	Cloth
Colour of upholstery	Black



Vehicle details

Maintenance booklet / proof	Non-existent	Next maintenance in	
Key is / should be	3 / 4	FZG documents	ZB#2 (B) was available (copy), ZB#1 (S) was not available
		Letter No.	FD453740
Previous damage / Accident	Detectable	Repainting	None detectable
Inspection conditions	sufficient	Lifting equipment / pit	yes
Test drive	Not performed	Engine function test	Performed
Manufacturer key number/ type code number	8566 / BNF 03746		
Emission standard	EURO6;Y;PI/CI; N1 III, N2	Fine dust sticker	
Permitted total weight	3,140 kg	Empty weight	

Tyres

Mounted tyres

#	Tyre size	Type of tyre	Manufacturer	Tread depth
1)	215/65 R15 104T	All-season tyres on Steel rim with wheel cover	Continental	6mm / 6mm
2)	215/65 R15 104T	All-season tyres on Steel rim with wheel cover	Continental	6mm / 6mm

Replacement

Typ	Tyre size	Type of tyre	Manufacturer	Tread depth
E	215/65 R15 104T	All-season tyres on Steel	Goodyear	7 mm

Legend: Tread depth information for tires on the left is in the first place, for tires on the right is in the second place on the axle in the direction of travel



Equipment

Standard equipment

- | | |
|-----------------------------------------------------------------------------------------------------------------------------------------------------------------------------------------------------------------------------------------------------------------------------------------------------------------------------------------------------------------------------------------------------------------------------------------------------------------------------------------------------------------------------------------------------------------------------------------------------------------------------------------------------------------------------------------------------------------------------------------------------------------------------------------------------------------------------------------------------------------------------------------------------------------------------------------------------------------------------------------------------------------------------------------------------------------------------------------------------------------------------------------------|------------------------------------------------------------------------------------------------------------------------------------------------------------------------------------------------------------------------------------------------------------------------------------------------------------------------------------------------------------------------------------------------------------------------------------------------------------------------------------------------------------------------------------------------------------------------------------------------------------------------------------------------------------------------------------------------------------------------------------------------------------------------------------------------------------------------------------------------------------------------------------------------------------------------------------------------------------------------------------------------------------------------------------------------------------------------------------|
| <ul style="list-style-type: none"> • 1 battery • Anti-lock braking system with electronic brake-force distribution (EBD) • roof, high • Double-wing rear door with 180° opening angle (without window) • Front window lifter, electric • Ford Easy Fuel • Cruise control including leather steering wheel • Grab handle on the B-pillar on the passenger side • Front air conditioning • Load compartment floor: Vinyl floor covering "Easy Clean" including wheel house lining • Fog light • Particulate filter: diesel particulate filter • Wheels: Hubcaps • Wheels: Steel wheels 6.5 J x 15 with 215/65 R 15 tires • Headlight dipped beam with switch-off delay • Sliding door: Sliding door, right • Side protection strips • Power steering • Rear bumper with integrated step • Partition to the cargo area without windows • Immobiliser • Central locking with remote control • Second key with remote control | <ul style="list-style-type: none"> • Driver's side airbag • Exterior mirrors, electrically adjustable and heated • On-board computer • Headlining in driver's cab • tachometer • Electronic Safety and Stability Program (ESP) with Traction Control (TSC) • Generator, 200 A • Transmission: 6-speed transmission • Interior lighting with delay circuit • Cargo area lighting • leather steering wheel • Steering column, adjustable in height and reach • Parking pilot system front and rear • Radio: Audio system 2: "MyConnection Radio" • Wheels: Tire repair kit • Headlights with static cornering light • Sliding door entry light automatically when door is opened • Rear mud flaps • Low side wall cladding • Seat belts • Daytime running light • Lashing eyes • Heat-insulating glazing, slightly tinted • auxiliary heater, electric |
|-----------------------------------------------------------------------------------------------------------------------------------------------------------------------------------------------------------------------------------------------------------------------------------------------------------------------------------------------------------------------------------------------------------------------------------------------------------------------------------------------------------------------------------------------------------------------------------------------------------------------------------------------------------------------------------------------------------------------------------------------------------------------------------------------------------------------------------------------------------------------------------------------------------------------------------------------------------------------------------------------------------------------------------------------------------------------------------------------------------------------------------------------|------------------------------------------------------------------------------------------------------------------------------------------------------------------------------------------------------------------------------------------------------------------------------------------------------------------------------------------------------------------------------------------------------------------------------------------------------------------------------------------------------------------------------------------------------------------------------------------------------------------------------------------------------------------------------------------------------------------------------------------------------------------------------------------------------------------------------------------------------------------------------------------------------------------------------------------------------------------------------------------------------------------------------------------------------------------------------------|

Extra equipment

- | | |
|------------------------------------------------------------------------------------------------------------------------------------------------------------------------------------------------------------------------------------------------------------------------------------------------------|------------------------------------------------------------------------------------------------------------------------------------------------------------------------------------------------------------------------------------------------------------------------------------------------------------------------------------------------------------------------------------------------------------------------------------------------------------------------------------------------------------|
| <ul style="list-style-type: none"> • 2 batteries • Auxiliary heating package 1 (auxiliary heating (fuel-powered auxiliary heating), programmable, including remote control) • Paint finish: metallic • Wheels: Winter tires M+S (suitable for all seasons) | <ul style="list-style-type: none"> • Seats: Seat Package 15 (driver's seat, 4-way adjustable (forward/backward, backrest, seat cushion angle, height) - double passenger seat with storage compartment under individually foldable seat cushions - headrests, height adjustable - tray integrated in the double passenger seat (fold-out) - seat heating for driver - seat heating for passenger - inside armrest for driver - lumbar support, manual (driver's seat) - seat cover: fabric) |
|------------------------------------------------------------------------------------------------------------------------------------------------------------------------------------------------------------------------------------------------------------------------------------------------------|------------------------------------------------------------------------------------------------------------------------------------------------------------------------------------------------------------------------------------------------------------------------------------------------------------------------------------------------------------------------------------------------------------------------------------------------------------------------------------------------------------|

Retrofitted equipment

- | | |
|----------------------------------------------------------------------|--|
| <ul style="list-style-type: none"> • BOTT accessories | |
|----------------------------------------------------------------------|--|

Brief expert findings

Documents submitted	At the time of the inspection, the registration certificate Part 2 (letter) was available, but the registration certificate Part 1 (certificate) was not. (Copy)
VIN comparison	The vehicle identification number (VIN) was read from the vehicle and its conformity with the submitted documents was verified during the inspection by the undersigned.
Inspection	The inspection conditions were sufficient for the assessment of the vehicle. Lifting equipment and a pit were available for examining the vehicle.
Test drive	No test drive/maneuvering was carried out during the inspection of the vehicle.
Engine function test	An engine test run was performed.



Value reducing factors

No.	Component group	Description
1	Misc.	Inspection / maintenance - No evidence - No deduction
2	Braking system	Brake fluid - No evidence - No deduction
3	Fuel system	Tank flap - Scratch(es) - Smart repair
4	Door - front left side	Brightware - lower - Scratch(es) - Replace
5	Boot lid / rear door	Boot lid (Links) - Dent / paintcoat damage - Smart repair
6	Boot lid / rear door	Boot lid (Rechts) - Dent / paintcoat damage - Smart repair
7	Gearbox	Gear knob - Broken / torn - Replace
8	Boot lid / rear door	Boot lid (Verkleidung L+ R) - Scratch(es) - Replace
9	Seat - front	Seat cover - left side (und Polster) - Broken / torn - Replace
10	Side panel - rear right side	Side panel (unterhalb) - Scratch(es) - Paint
11	Rear bumper	Rear bumper (unpainted) - Deformed - Replace
12	Side panel - rear left side	Side panel (teilweise) - Deformed - Repair and paint
13	Sliding door, right	Sliding door - Dent / paintcoat damage - Repair and paint
14	Door - front left side	Door - Dent / paintcoat damage - Repair and paint

Wear and tear

No.	Component group	Description
1	Door - rear right side	Brightware - lower - Scratch(es) - No deduction
2	Door - front right side	Door - dent(s) - No deduction

The vehicle shows signs of wear commensurate with its age and use.

Missing parts

Description

Documents - Service book

Equipment - Vehicle key

Previous damages

No.	Previous damage	Extent of damage (Net)
1	Front, Provided by user / customer, from 16 Jun 2020	3.168,44 €

Order/Scope of order

The order was placed to prepare a sales report for the vehicle described. This includes the following:

- Description of core relevant information about the vehicle
- Documentation of equipment features
(Delivery by third-party service providers)
- Documentation of damage, defects, missing parts
- Documentation of previous damage, unrepaired previous damage, repainting
- a brief visual or functional inspection of the equipment details if possible.
(Functional tests of driver assistance systems are not included in the scope of services!)
- a photo documentation of the vehicle



Basis for the order

This product is based on the guidelines for vehicle returns and valuations of light commercial vehicles from Alphabet Fuhrparkmanagement GmbH. The expert makes the explicit findings in each individual case objectively within the framework of the specified standards based on his or her own expertise.

The vehicle inspection takes place in a disassembled state.

Damage or defects that can only be detected during disassembly/diagnosis work or through advanced knowledge remain within the scope of the prognosis risk. An extended risk exists for concealed defects caused by fraudulent deception and not identifiable by the expert.

Damage or defects resulting from normal use or wear and tear of the vehicle will be accepted according to the applicable standard.

There was no explicit identification or monetary consideration of the expected features within the product.

Features which in their nature and severity slightly exceed normal use but do not constitute unacceptable damage will be documented and identified under signs of use if necessary.

Damage or defects which, according to the underlying standard, can no longer be attributed to normal use or wear and tear are listed in the product under "Depreciating Factors".

Depending on the product specification, a monetary ID can be provided. If this takes place, the costs can be 100% d or pro rata depending on the vehicle's age and mileage.

Previous damages

According to available information previous damages were repaired at the vehicle. Traces of repairs, which allow conclusions about the area of repair, were not recognizable during the inspection.

Comments

Servicerestlauf nicht anzeigbar



Figure 1: Diagonal front (left)



Figure 2: Diagonal front (right)



Figure 3: Diagonal rear (left)



Figure 4: Diagonal rear (right)

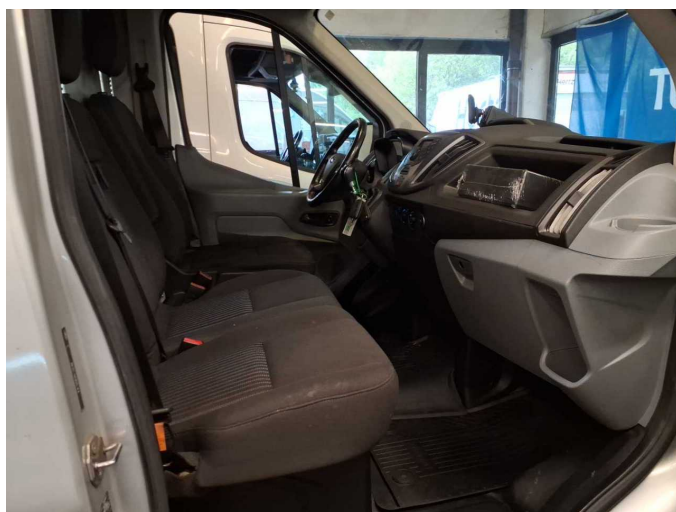


Figure 5: Interior - front



Figure 6: Interior - rear



Figure 7: Instrument cluster



Figure 8: Instrument panel



Figure 9: Interior 360° view



Figure 10: Cargo area



Figure 11: VIN



Figure 12: Mounted tyres

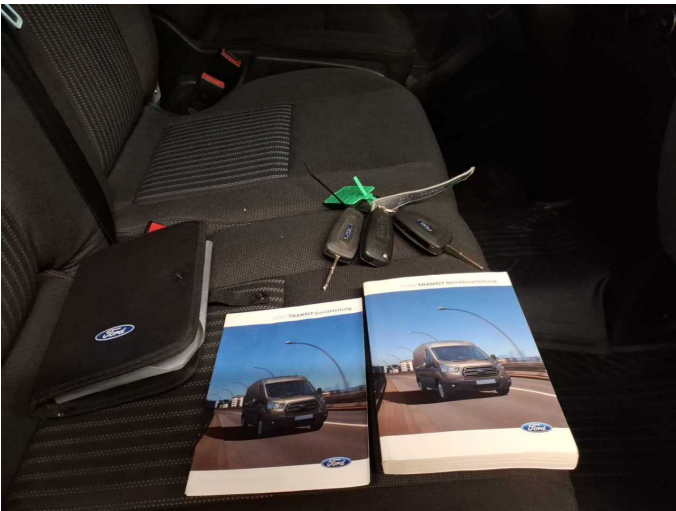


Figure 13: Documents

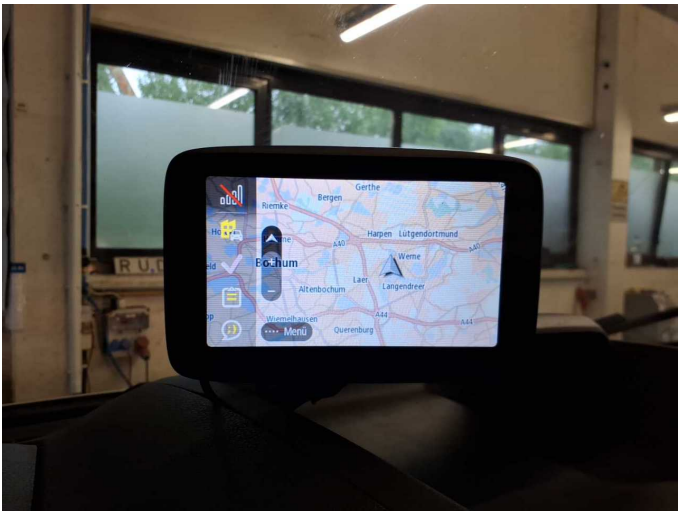


Figure 14: Navigation



Figure 15: Misc.

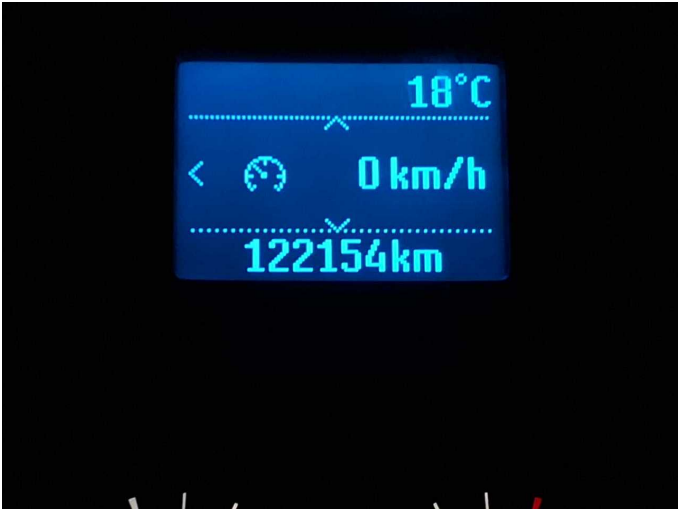


Figure 16: Misc.



Figure 17: Misc.



Figure 18: Misc.



Figure 19: Misc.



Figure 20: Misc.



Figure 21: Misc.



Damage 3: Fuel system: Tank flap - Scratch(es) - Smart repair



Damage 3: Fuel system: Tank flap - Scratch(es) - Smart repair



Damage 4: Door - front left side: Brightware - lower - Scratch(es) - Replace



Damage 4: Door - front left side: Brightware - lower - Scratch(es) - Replace



Damage 5: Boot lid / rear door: Boot lid (Links) - Dent / paintcoat damage - Smart repair



Damage 5: Boot lid / rear door: Boot lid (Links) - Dent / paintcoat damage - Smart repair



Damage 5: Boot lid / rear door: Boot lid (Links) - Dent / paintcoat damage - Smart repair



Damage 5: Boot lid / rear door: Boot lid (Links) - Dent / paintcoat damage - Smart repair



Damage 6: Boot lid / rear door: Boot lid (Rechts) - Dent / paintcoat damage - Smart repair



Damage 6: Boot lid / rear door: Boot lid (Rechts) - Dent / paintcoat damage - Smart repair



Damage 6: Boot lid / rear door: Boot lid (Rechts) - Dent / paintcoat damage - Smart repair



Damage 6: Boot lid / rear door: Boot lid (Rechts) - Dent / paintcoat damage - Smart repair



Damage 7: Gearbox: Gear knob - Broken / torn - Replace



Damage 7: Gearbox: Gear knob - Broken / torn - Replace



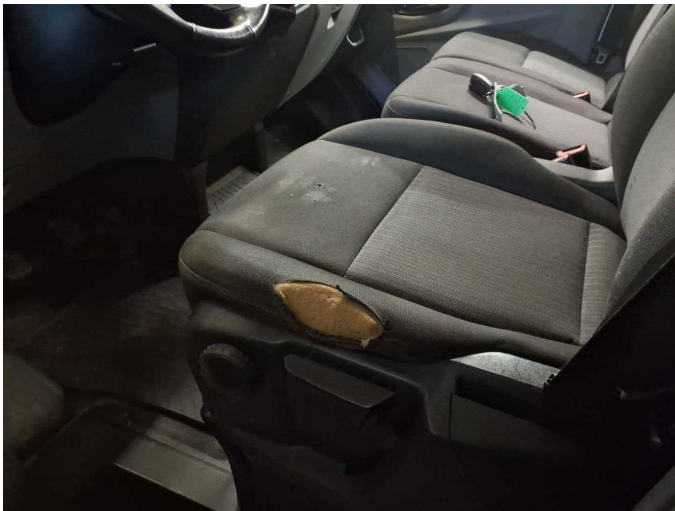
Damage 8: Boot lid / rear door: Boot lid (Verkleidung L + R) - Scratch(es) - Replace



Damage 8: Boot lid / rear door: Boot lid (Verkleidung L+ R) - Scratch(es) - Replace



Damage 8: Boot lid / rear door: Boot lid (Verkleidung L+ R) - Scratch(es) - Replace



Damage 9: Seat - front: Seat cover - left side (und Polster) - Broken / torn - Replace



Damage 9: Seat - front: Seat cover - left side (und Polster) - Broken / torn - Replace



Damage 10: Side panel - rear right side: Side panel (unterhalb) - Scratch(es) - Paint



Damage 10: Side panel - rear right side: Side panel (unterhalb) - Scratch(es) - Paint



Damage 11: Rear bumper: Rear bumper (unpainted) - Deformed - Replace



Damage 11: Rear bumper: Rear bumper (unpainted) - Deformed - Replace



Damage 11: Rear bumper: Rear bumper (unpainted) - Deformed - Replace



Damage 12: Side panel - rear left side: Side panel (teilweise) - Deformed - Repair and paint



Damage 12: Side panel - rear left side: Side panel (teilweise) - Deformed - Repair and paint



Damage 13: Sliding door, right: Sliding door - Dent / paintcoat damage - Repair and paint



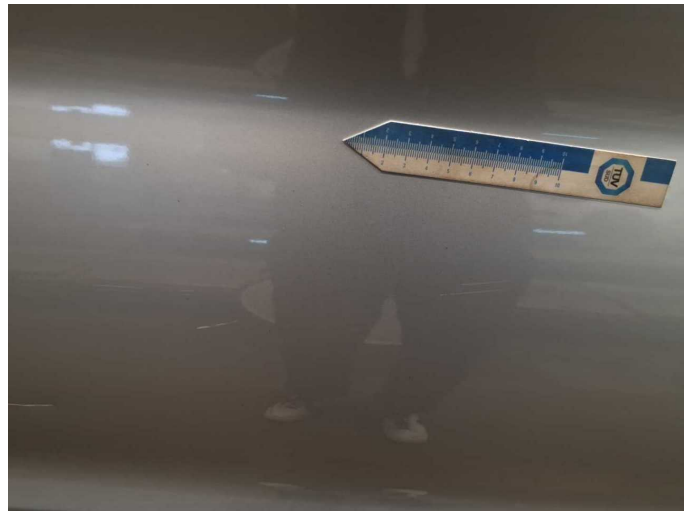
Damage 13: Sliding door, right: Sliding door - Dent / paintcoat damage - Repair and paint



Damage 13: Sliding door, right: Sliding door - Dent / paintcoat damage - Repair and paint



Damage 13: Sliding door, right: Sliding door - Dent / paintcoat damage - Repair and paint



Damage 13: Sliding door, right: Sliding door - Dent / paintcoat damage - Repair and paint



Damage 14: Door - front left side: Door - Dent / paintcoat damage - Repair and paint



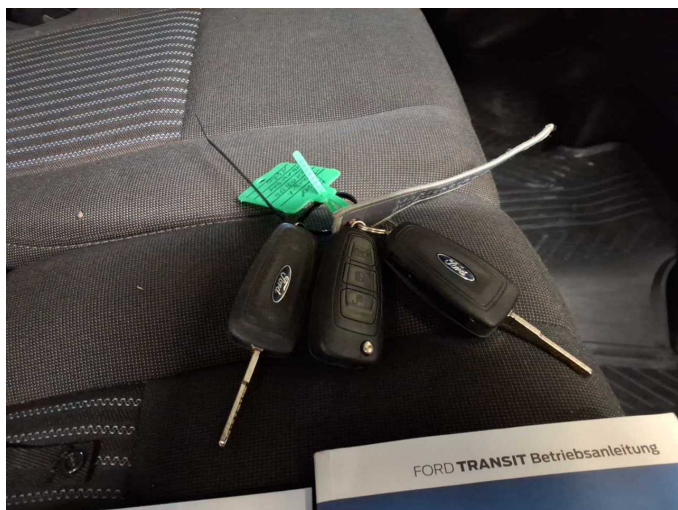
Damage 14: Door - front left side: Door - Dent / paintcoat damage - Repair and paint



Damage 14: Door - front left side: Door - Dent / paintcoat damage - Repair and paint



Damage 14: Door - front left side: Door - Dent / paintcoat damage - Repair and paint



Missing part 2: Equipment: Vehicle key - Missing - Replace