



FORD C-Max

C-MAX 1.5 EcoBoost Start-Stop-System Aut.

VIN NO WF0VXXGCEVGK32099

Registration Number CEVGK32099



MOT Date



Last Service



Number of Owners



Last Service Mileage



Number of Keys



First Registration Date



Odometer Reading



Country First Registered



Inspection Report Summary

Customer	BCA Online	Report Number	P20250915134936
Inspection Date / Place	2025-09-15 / ARS Altmann AG Riedstadt	Cosmetic Grade	5

Vehicle Summary

Vehicle Condition	Runner	VAT Type	Margin
Fuel Type	Petrol	Road Worthy	Yes
Colour	Silver	Engine Size (cc)	1498
Engine Size	1.5	No of Doors	5
Body Type	Stationwagon / Estate	Drive Train	Front
Seat Colour		No of Seats	5
Seat Covering Name	Schwarz	Seat Covering	Cloth
Charging Cables		NEDC CO2 Rating (q/km)	149
Gearbox Type	Automatic		

Vehicle History & Documents

Service Book Available	Incomplete	Next Service Mileage	km
Previous Usage		Imported	No
Manufacturer Warrenty			







Equipment

Trip Computer	Airbag Status	Anti-lock braking	Bluetooth telephone interface
Front fog lamps	Heated wing mirrors	Remote central locking	Split folding rear seats
CD Player	Electrically folding wing mirrors	Radio	Rear parking sensors
USB Socket	Alloys wheels	Auxiliary Socket	Cruise control
Front parking sensors	Remote adjusting wing mirrors	Satellite navigation	Stability control
Central locking	Leather steering wheel	Rain sensitive windscreen wipers	

Equipment Details

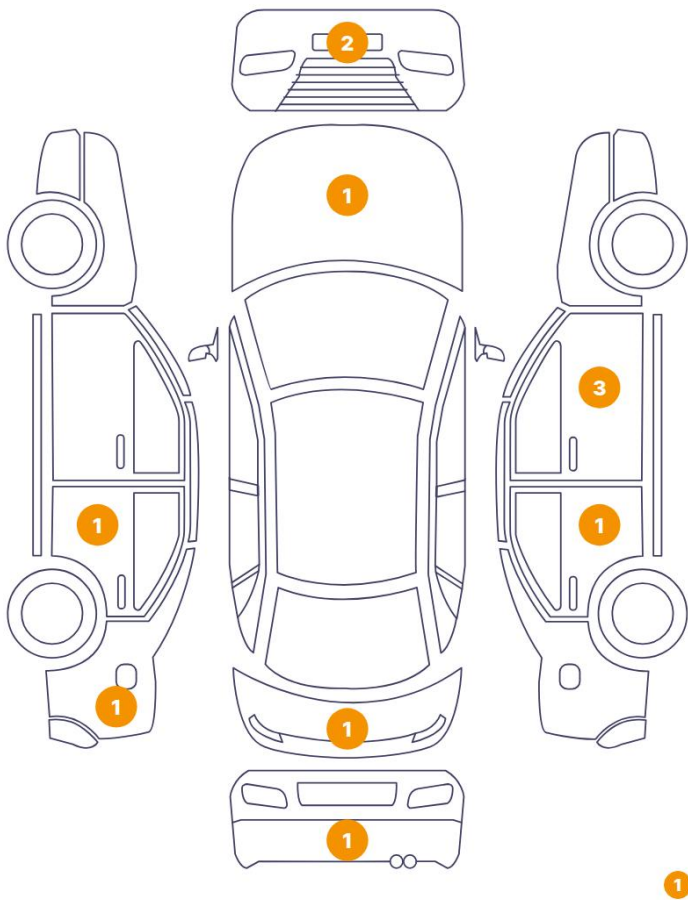
Air Conditioning	Dual Zone Climate Control	Alloy Wheel Size	16
Seat Heating	Front		

Wheels & Tyres

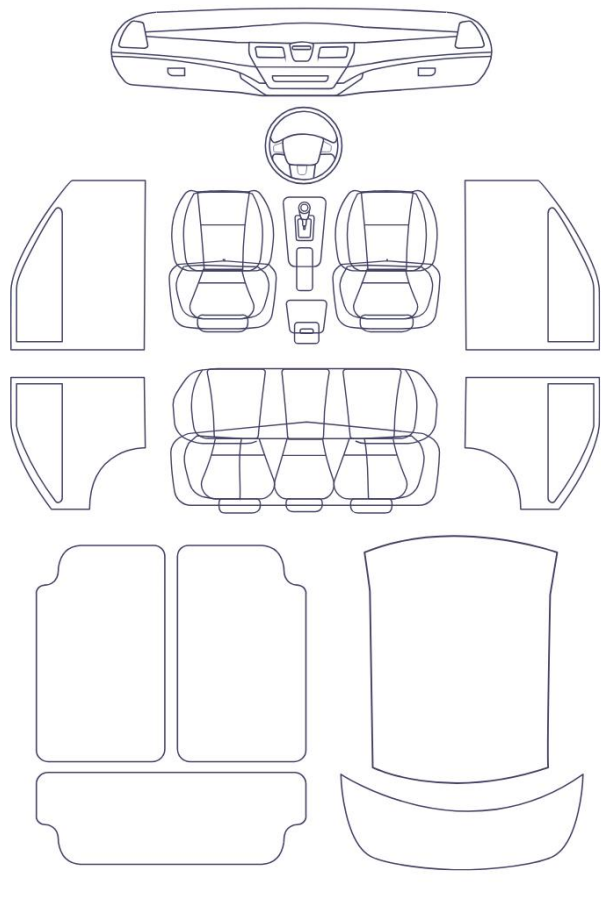
Right Front Tyre Depth	6	Left Front Tyre Depth	5
Right Rear Tyre Depth	2	Left Rear Tyre Depth	3

Cosmetic Damage

12 Schäden



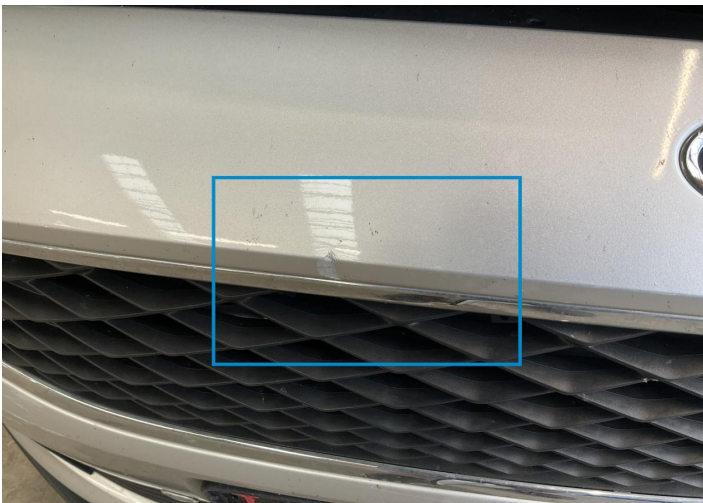
0 Schäden



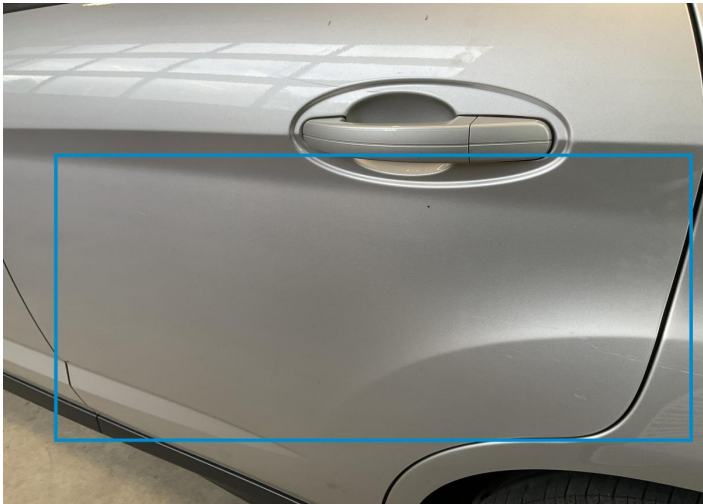
Component		Damage	Comments
1	Bumper / Front	Paint / Scratch / Scuff	
2	Bumper / Front	Paint / Scratch / Scuff	
3	Door / Back Left	Paint / Scratch / Scuff	
4	Side Panel / Back Left	Paint / Scratch / Scuff	
5	Tailgate	Paint / Scratch / Scuff	
6	Bumper / Back	Paint / Scratch / Scuff	
7	Door / Back Right	Bodywork / Dent / Dent	
8	Door / Front Right	Bodywork / Dent / Dent	
9	Door / Front Right	Paint / Scratch / Scuff	
10	Door Handle / Front Right	Paint / Scratch / Scuff	
11	Other	Paint / Poor Previous Repair	
12	Hood	Bodywork / Breakage	



1. Bumper / Front
Paint / Scratch / Scuff -



2. Bumper / Front
Paint / Scratch / Scuff -



3. Door / Back Left
Paint / Scratch / Scuff -



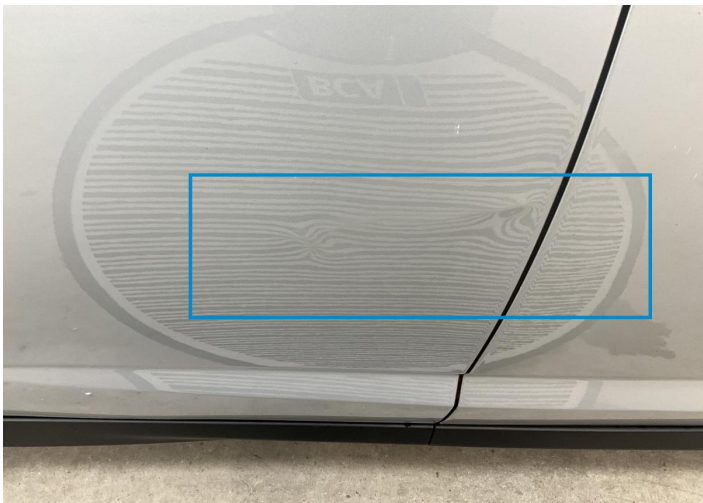
4. Side Panel / Back Left
Paint / Scratch / Scuff -



5. Tailgate
Paint / Scratch / Scuff -



6. Bumper / Back
Paint / Scratch / Scuff -



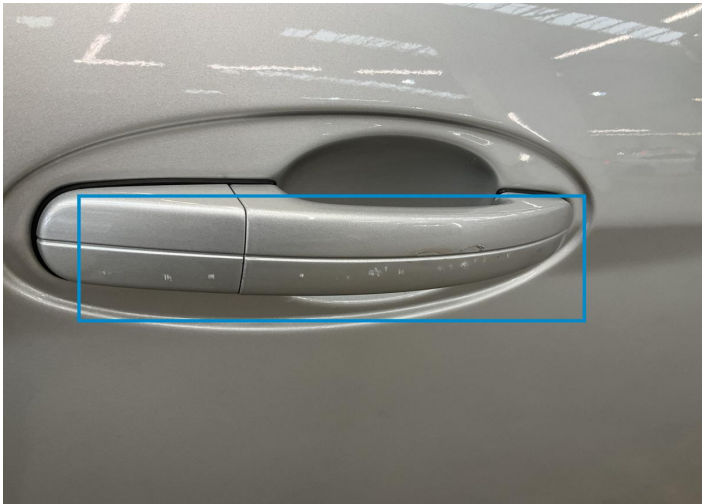
7. Door / Back Right
Bodywork / Dent / Dent -



8. Door / Front Right
Bodywork / Dent / Dent -



9. Door / Front Right
Paint / Scratch / Scuff -



10. Door Handle / Front Right
Paint / Scratch / Scuff -



11.
Paint / Poor Previous Repair -



12. Hood
Bodywork / Breakage -

Mechanical Condition

Equipments Test

Central Locking	✓	Electric Windows	✓
Navigation System	✓	Audio Equipment	✓
AC / Heating System	✓	Main & Spare Keys Functioning	✓

Control Lights

ABS Warning Light	✓	ESP Fault/Traction Control Malfunction Light	✓
Airbag Warning Light	✓	Oil Pressure Warning Light	✓
Brake Warning Light	✓	Power Steering Warning Light	✓
Alternator / Battery	✓	No Dashboard Lights	✓
Display Defect	✓	Service Light	✓
Tire Pressure Monitoring System	✓		

Engine

Engine Status / EML	!	Engine Leak Visible	✓
Engine Starts	✓		

Gearbox

Gear Box	✓
----------	---

Levels

Brakes Fluid	✓	Coolant Fluid	!
--------------	---	---------------	---

Test Drive Inspection

Steering Wheel			
Steering Noise / Anomaly		✓	
Engine			
Engine Noise	✓	The Gears Scratch / Skip / Abnormal Operation	✓
Fume Quantity	✓	Power Loss	✓
Brake			
Brake System Anomaly		✓	
General			
Test Driven Status		✓	
✓ <i>No troubles detected, good condition or correct tests, according to vehicle age and mileage</i>			
! <i>Damages or malfunction detected that requires repairs by the buyer</i>			
NA <i>Not applicable</i>			
= <i>Not tested</i>			

Disclaimer

Please also note the "UserGuide condition report", which shows the scope of the vehicle description.

[User Guide](#)