



Expertise

Protocol number: 41088914
Order No. / Reference: 25130798
Inspection date: 15 Aug 2025

Manufacturer: Ford

Model: Transit Connect 220 L2 Trend

VIN: WF0SXXWPGSME35148



Vehicle details	
Manufacturer / Type / Model / Equipment	
Ford Transit Connect 220 L2 Trend	
Vehicle Identification number	WF0SXXWPGSME35148
Mileage (Read)	207,995 km
First registration	22 Feb 2022
Number of holders	1
Power / Engine displacement	74 kw / 999 ccm
Fuel type / Cylinder	Petrol / 3
Gearbox / Number of gears	Manual / 6
Type of drive	Front drive
Type of vehicle	Van
Colour / colour code	Frost-Weiß
Doors / Seats	4 / 3
Upholstery type	Cloth
Colour of upholstery	Black
Vehicle with smoke odor	no
Driving readiness	Roadworthy



Vehicle details

Maintenance booklet / proof	digital proof / complete	Next maintenance in	6 %
Last maintenance on / at	09/2024 at 179,795 km		
Key is / should be	1 / 2	FZG documents	ZB#2 (B) was available (copy), ZB#1 (S) was not available
		Letter No.	GH407984
Previous damage / Accident	None detectable	Repainting	None detectable
Inspection conditions	sufficient	Lifting equipment / pit	yes
Test drive	Not performed	Engine function test	Performed
Driving readiness	Roadworthy		
Manufacturer key number/ type code number	8566 / BHA 00534		
Emission standard	EURO6;WLTP;AQ;PI/CI; N1 II	Fine dust sticker	
Permitted total weight	2,175 kg	Empty weight	

Tyres

Mounted tyres

#	Tyre size	Type of tyre	Manufacturer	Tread depth
1)	205/60 R16 96V	Summer tyres on Steel rim with wheel cover	Pirelli	5mm / 5mm
2)	205/60 R16 96V	Summer tyres on Steel rim with wheel cover	Pirelli	6mm / 6mm

Additional tyres

#	Tyre size	Type of tyre	Manufacturer	Tread depth
1)	205/60 R16 96H	Winter tyres on Steel	Michelin	4mm / 4mm
2)	205/60 R16 96H	Winter tyres on Steel	Michelin	5mm / 6mm

Replacement

Typ	Tyre size	Type of tyre	Manufacturer	Tread depth
E	205/60 R16 96H XL	Winter tyres on Steel	Continental	6 mm

Legend: Tread depth information for tires on the left is in the first place, for tires on the right is in the second place on the axle in the direction of travel

Equipment

Standard equipment

- Steering column, adjustable in height and reach
- Center console, front
- Emergency brake light
- Radio: Ford Audio System 2
- Wheels: Steel wheels 6.5 J x 16 with 205/60 R 16 tires and hubcaps
- Power steering, electro-mechanical
- Height-adjustable front seat belts
- Seats: Seat Package 4
- Dust and pollen filter
- Front bumper and rear bumper end caps painted in body color
- Partition to the cargo area without windows
- Door handles, black
- Warning system for unfastened seat belts
- Heat-insulating glazing, slightly tinted
- Storage compartment with 12-volt connection
- Driver's side airbag
- Exterior mirror, narrow mirror format
- Battery, reinforced
- Rubberized floor covering, front
- Double rear door without window
- Third brake light
- Front window lifter, electric
- FordPass Connect
- Warranty 2 years Ford new car warranty including the Ford Assistance mobility guarantee
- Front interior lighting with delay circuit
- Paint finish: Uni
- Load compartment protective floor plastic, molded
- Alternator/generator
- Fog light
- Gasoline particulate filter (OPF)
- Wheels: Tire repair kit
- Sliding door rear, right
- Side protection strips, plastic
- Safety Brake Assist
- Safety door lock, automatic (45 sec.)
- Start-stop system
- Power socket: 12-volt connection on the front center console
- Daytime running light
- Child safety lock on sliding doors
- Lashing eyes
- Electronic immobilizer (EPATS)
- Central locking with remote control
- ABS with EBD
- Exterior mirrors, electrically adjustable and heated
- Exterior mirror housing black
- Hill start assist
- On-board computer including outside temperature display
- tachometer
- Electronic Safety and Stability Program (ESP)
- Ford Easy Fuel
- Heated windscreen
- Transmission: 6-speed transmission
- Glove compartment with lid
- Front air conditioning including semi-electronic recirculation
- Load compartment lining, side, half-height

Extra equipment

- Fog lights with static cornering light
- Radio: Ford Audio System 154 (4.2" monochrome display (10.7 cm screen diagonal) - DAB/DAB+ radio, 1 USB port - 4 front speakers - Bluetooth hands-free system and audio streaming - Emergency Call Assist - Phase diversity antenna - Audio remote control on the steering wheel)
- Socket: 12-volt connection in the cargo/luggage compartment
- Partition to the cargo area with through-loading opening and window
- Airbag: Front airbag for front passenger (front airbag for front passenger including deactivation function and glove compartment with lid)
- Floor covering: Front floor mats, all-weather floor mats (2-piece set)
- Cargo area lighting, LED
- Parking pilot system front and rear
- Shelving system installed in the cargo area
- Spare wheel: steel wheel
- Rear view camera J3KAM,HNKAB
- Seats: Seat Package 18 (Capitol/City fabric in Ebony (black) - Double passenger seat (with storage compartment under the smaller seat section), variably foldable - Driver's seat, 3-way manually adjustable (forward/backward, height, backrest) - Height-adjustable headrests - Manual lumbar support (driver's seat))
- Trailer coupling, fixed (including ESP trailer stabilization and permanent power supply)
- Exterior mirrors with large mirror format
- Electric front windows (with quick-down switch for driver and passenger side)



Brief expert findings

Documents submitted	At the time of the inspection, the registration certificate Part 2 (letter) was available, but the registration certificate Part 1 (certificate) was not. (Copy)
VIN comparison	The vehicle identification number (VIN) was read and the undersigned verified that it matched the documents submitted during the inspection.
Inspection	The inspection conditions were sufficient for the assessment of the vehicle. Lifting equipment and a pit were available for examining the vehicle.
Test drive	No test drive/maneuvering was carried out during the inspection of the vehicle.
Engine function test	An engine test run was performed.
Driving readiness	The vehicle was drivable at the time of inspection.

Value reducing factors

No.	Component group	Description
1	Wheel / tyres	Wheel cover - rear right side (Radkappe Hinten rechts) - Missing - Replace

Wear and tear

No.	Component group	Description
1	Bonnet	Bonnet - Stone chips - No deduction
2	Vehicle glazing	Windscreen - Stone chips - No deduction
3	Front bumper	Front bumper (unpainted) - Stone chips - No deduction
4	Rear bumper	Rear bumper (unpainted) - Scratch(es) - No deduction
5	Interior	Interior - Scratch(es) - No deduction
6	Interior	Cargo area floor - Scratch(es) - No deduction
7	Sill - left side	Sill - Scratch(es) - No deduction

The vehicle shows signs of wear commensurate with its age and use.

Missing parts

Description

Documents - Log book

Equipment - Vehicle key

Order/Scope of order

The order was placed to prepare a sales report for the vehicle described. This includes the following:

- Description of core relevant information about the vehicle
- Documentation of equipment features
(*Delivery by third-party service providers*)
- Documentation of damage, defects, missing parts
- Documentation of previous damage, unrepaired previous damage, repainting
- a brief visual or functional inspection of the equipment details if possible.
(*Functional tests of driver assistance systems are not included in the scope of services!*)
- a photo documentation of the vehicle



Basis for the order

This product is based on the guidelines for vehicle returns and valuations of light commercial vehicles from Alphabet Fuhrparkmanagement GmbH. The expert makes the explicit findings in each individual case objectively within the framework of the specified standards based on his or her own expertise.

The vehicle inspection takes place in a disassembled state.

Damage or defects that can only be detected during disassembly/diagnosis work or through advanced knowledge remain within the scope of the prognosis risk. An extended risk exists for concealed defects caused by fraudulent deception and not identifiable by the expert.

Damage or defects resulting from normal use or wear and tear of the vehicle will be accepted according to the applicable standard.

There was no explicit identification or monetary consideration of the expected features within the product.

Features which in their nature and severity slightly exceed normal use but do not constitute unacceptable damage will be documented and identified under signs of use if necessary.

Damage or defects which, according to the underlying standard, can no longer be attributed to normal use or wear and tear are listed in the product under "Depreciating Factors".

Depending on the product specification, a monetary ID can be provided. If this takes place, the costs can be 100% d or pro rata depending on the vehicle's age and mileage.

Previous damages

Apparently, no repaired previous damage could be found on the vehicle.

Comments

- Winterradsatz ist kein Bestandteil des Auslieferumfangs.



Figure 1: Diagonal front (left)



Figure 2: Diagonal front (right)



Figure 3: Diagonal rear (left)



Figure 4: Diagonal rear (right)



Figure 5: Interior - front



Figure 6: Interior - rear



Figure 7: Instrument cluster



Figure 8: Instrument panel



Figure 9: interior 360° view ([Online link](#))



Figure 10: Cargo area

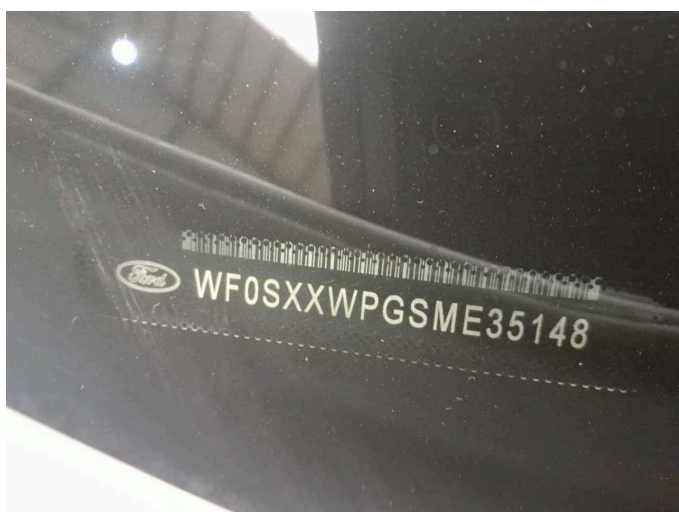


Figure 11: VIN



Figure 12: Mounted tyres

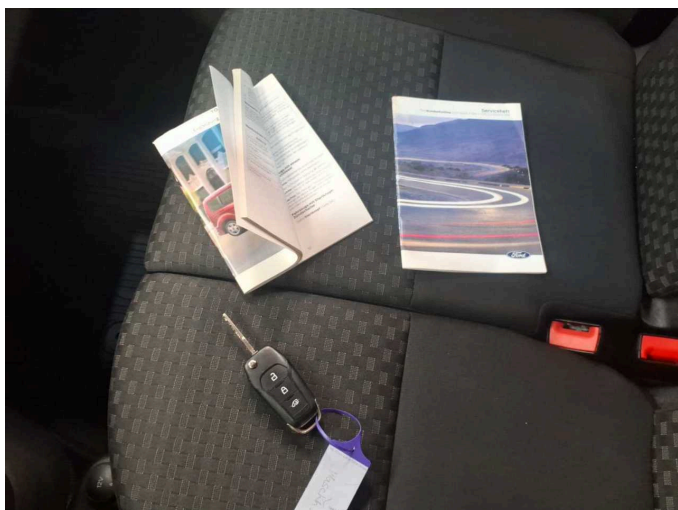


Figure 13: Documents



Figure 14: Documents



Figure 15: Additional tyres



Figure 16: Misc.

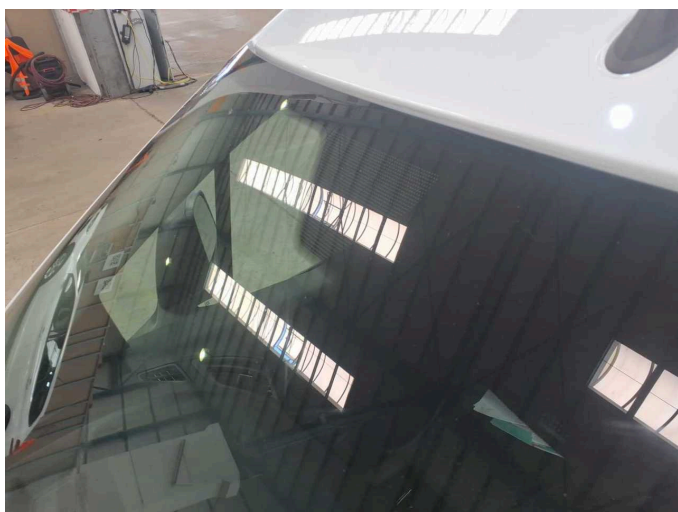


Figure 17: Misc.



Figure 18: Misc.



Figure 19: Misc.



Figure 20: Misc.



Figure 21: Misc.



Figure 22: Misc.



Figure 23: Misc.

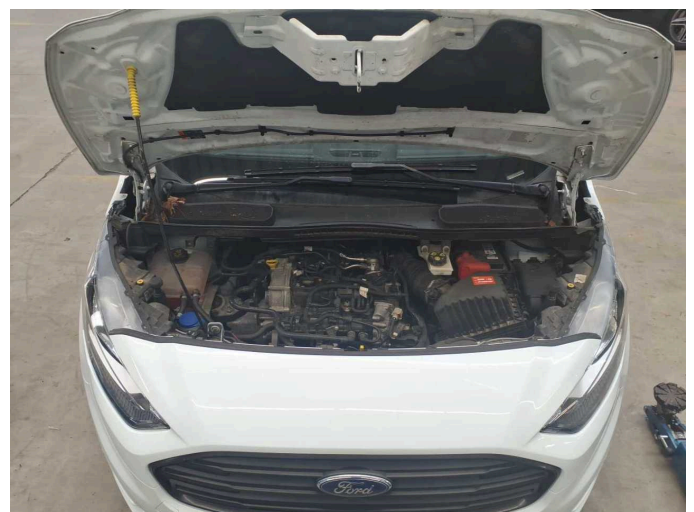


Figure 24: Misc.



Figure 25: Misc.

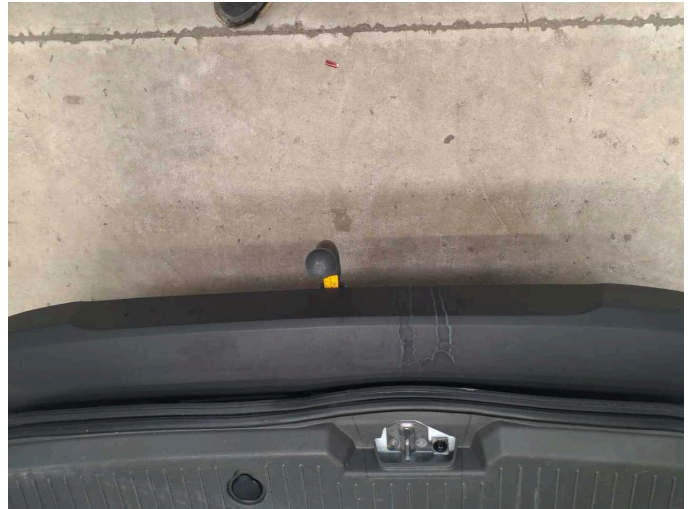


Figure 26: Misc.



Figure 27: Misc.



Figure 28: Misc.



Figure 29: Misc.



Damage 1: Wheel / tyres: Wheel cover - rear right side (Radkappe Hinten rechts) - Missing - Replace



Wartungshistorie

(gemäß Auftraggeber Informationen)

Fahrgestellnummer: WF0SXXWPGSME35148
Hersteller / Modell: FORD FORD Transit Connect 220 L2 Trend

Datum	KM-Stand	Beschreibung
20.09.2024	179.795	Luftfiltereinsatz ern; Motoröl b. Wartung; Ölfilter ern; Regelwartungsdienst; Wartung Sonstiges; Zündkerzen ern
27.02.2024	144.640	AU; Bremsflüssigkeit; Bremsflüssigkeit ern; Luftfiltereinsatz ern; Motoröl b. Wartung; Ölfilter ern; Regelwartungsdienst; Wartung Sonstiges; Zündkerzen ern
20.09.2023	114.012	Bremsinspektion vo + hi; Bremsklötze hinten; Bremsklötze vorne; Motoröl b. Wartung; Ölfilter ern; Regelwartungsdienst; Wartung Sonstiges
13.02.2023	71.495	Luftfiltereinsatz ern; Motoröl b. Wartung; Ölfilter ern; Regelwartungsdienst; Wartung Sonstiges; Zündkerzen ern