



Expertise

Protocol number: 41637819
Order No. / Reference: 25254054
Inspection date: 22 Sept 2025

Manufacturer: Ford

Model: Transit Connect 240 L1 Trend

VIN: WF0RXXWPGRMK87076



Vehicle details	
Manufacturer / Type / Model / Equipment	
Ford Transit Connect 240 L1 Trend	
Vehicle Identification number	WF0RXXWPGRMK87076
Mileage (Read)	27,755 km
First registration	7 Dec 2021
Number of holders	1
Next periodical technical inspection	12/2026
(Report not on hand)	
Power / Engine displacement	88 kw / 1,499 ccm
Fuel type / Cylinder	Diesel / 4
Gearbox / Number of gears	Manual / 6
Type of drive	Front drive
Type of vehicle	Van
Colour / colour code	Frost-Weiß
Doors / Seats	4 / 3
Upholstery type	Cloth
Colour of upholstery	Black-Anthracite
Re/Import	no
Driving readiness	Roadworthy



Vehicle details

Maintenance booklet / proof	digital proof / complete	Next maintenance in	11 %
Last maintenance on / at	12/2023 at 17,512 km		
Key is / should be	2 / 2	FZG documents	ZB#2 (B) was available (copy), ZB#1 (S) was not available
		Letter No.	GH382758
Previous damage / Accident	Detectable	Repainting	Detectable
Inspection conditions	sufficient	Lifting equipment / pit	yes
Test drive	Not performed	Engine function test	Performed
Driving readiness	Roadworthy		
Manufacturer key number/ type code number	8566 / BMN 02265		
Emission standard	EURO6;WLTP;AQ;PI/CI; N1 II	Fine dust sticker	
Permitted total weight	2,400 kg	Empty weight	

Tyres

Mounted tyres

#	Tyre size	Type of tyre	Manufacturer	Tread depth
1)	205/60 R16 96H	Winter tyres on Steel rim with wheel cover	Dunlop	6mm / 6mm
2)	205/60 R16 96H	Winter tyres on Steel rim with wheel cover	Dunlop	7mm / 7mm

Additional tyres

#	Tyre size	Type of tyre	Manufacturer	Tread depth
1)	205/60 R16 96H	Summer tyres on Steel	Continental	6mm / 6mm
2)	205/60 R16 96H	Summer tyres on Steel	Continental	6mm / 6mm

Replacement

Typ	Tyre size	Type of tyre	Manufacturer	Tread depth
E	205/60 R16 96H	Summer tyres on Steel	Continental	8 mm

Legend: Tread depth information for tires on the left is in the first place, for tires on the right is in the second place on the axle in the direction of travel

Equipment

Standard equipment

- Storage compartment with 12-volt connection
- Driver's side airbag
- Exterior mirror, narrow mirror format
- Battery, reinforced
- Rubberized floor covering, front
- Diesel particulate filter (DPF)
- tachometer
- Electronic Safety and Stability Program (ESP)
- Ford Easy Fuel
- Heated windscreen
- Transmission: 6-speed transmission
- Glove compartment with lid
- Front air conditioning including semi-electronic recirculation
- Load compartment lining, side, half-height
- Alternator/generator
- Fog light
- Radio: Ford Audio System 2
- Wheels: Steel wheels 6.5 J x 16 with 205/60 R 16 tires and hubcaps
- Power steering, electro-mechanical
- Height-adjustable front seat belts
- Seats: Seat Package 4
- Start-stop system
- Power socket: 12-volt connection on the front center console
- Daytime running light
- Child safety lock on sliding doors
- Lashing eyes
- Electronic immobilizer (EPATS)
- Central locking with remote control
- ABS with EBD
- Exterior mirrors, electrically adjustable and heated
- Exterior mirror housing black
- Hill start assist
- On-board computer including outside temperature display
- Double rear door without window
- Third brake light
- Front window lifter, electric
- FordPass Connect
- Warranty 2-year Ford new car warranty including the Ford Assistance mobility guarantee
- Front interior lighting with delay circuit
- Paint finish: Uni
- Load compartment protective floor plastic, molded
- Steering column, adjustable in height and reach
- Center console, front
- Emergency brake light
- Wheels: Tire repair kit
- Sliding door rear, right
- Side protection strips, plastic
- Safety Brake Assist
- Safety door lock, automatic (45 sec.)
- Front spoiler lip
- Dust and pollen filter
- Front bumper and rear bumper end caps painted in body color
- Partition to the cargo area without windows
- Door handles, black
- Warning system for unfastened seat belts
- Heat-insulating glazing, slightly tinted
- Auxiliary heater, electric (PTC), front

Extra equipment

- Airbag: Front airbag for front passenger (front airbag for front passenger including deactivation function and glove compartment with lid)
- DPF regenerator, manual
- Cargo area lighting, LED
- Parking pilot system front and rear
- Spare wheel: steel wheel
- Partition to the cargo area with through-loading opening without window
- Trailer coupling, fixed (including ESP trailer stabilization and permanent power supply)
- Floor covering: Front floor mats, all-weather floor mats (2-piece set)
- Package: Smoker (cigarette lighter and ashtray)
- Radio: Ford Audio System 154 (4.2" monochrome display (10.7 cm screen diagonal) - DAB/DAB+ radio, 1 USB port - 4 front speakers - Bluetooth hands-free system and audio streaming - Emergency Call Assist - Phase diversity antenna - Audio remote control on the steering wheel)



Brief expert findings

Documents submitted	At the time of the inspection, the registration certificate Part 2 (letter) was available, but the registration certificate Part 1 (certificate) was not. (Copy)
VIN comparison	The vehicle identification number (VIN) was read from the vehicle and its conformity with the submitted documents was verified during the inspection by the undersigned.
Inspection	The inspection conditions were sufficient for the assessment of the vehicle. Lifting equipment and a pit were available for examining the vehicle.
Test drive	No test drive/maneuvering was carried out during the inspection of the vehicle.
Engine function test	An engine test run was performed.
Driving readiness	The vehicle was drivable at the time of inspection.

Value reducing factors

No.	Component group	Description
1	Bonnet	Bonnet (Seilzug gerissen) - Non-operational - Replace
2	Side panel - rear left side	Side panel - Dent / paintcoat damage - Repair and paint

Wear and tear

No.	Component group	Description
1	Rear bumper	Rear bumper (unpainted) - Scratch(es) - No deduction
2	Vehicle glazing	Windscreen - Stone chips - No deduction
3	Front bumper	Front bumper - Stone chips - No deduction
4	Mudguard - right side	Mudguard - right side - Stone chips - No deduction

The vehicle shows signs of wear commensurate with its age and use.

Previous damages

No.	Previous damage	Extent of damage (Net)
1	Front, Professionally repaired, Invoice of repair done	Non-existent

Repainting

No.	Repainting
1	Bonnet, Professionally carried out, Invoice of repair done

Paint coat thickness measurement

Bonnet	169 µm
--------	--------

Order/Scope of order

The order was placed to prepare a sales report for the vehicle described. This includes the following:

- Description of core relevant information about the vehicle
- Documentation of equipment features
(Delivery by third-party service providers)
- Documentation of damage, defects, missing parts
- Documentation of previous damage, unrepaired previous damage, repainting
- a brief visual or functional inspection of the equipment details if possible.
(Functional tests of driver assistance systems are not included in the scope of services!)
- a photo documentation of the vehicle



Basis for the order

This product is based on the guidelines for vehicle returns and valuations of light commercial vehicles from Alphabet Fuhrparkmanagement GmbH. The expert makes the explicit findings in each individual case objectively within the framework of the specified standards based on his or her own expertise.

The vehicle inspection takes place in a disassembled state.

Damage or defects that can only be detected during disassembly/diagnosis work or through advanced knowledge remain within the scope of the prognosis risk. An extended risk exists for concealed defects caused by fraudulent deception and not identifiable by the expert.

Damage or defects resulting from normal use or wear and tear of the vehicle will be accepted according to the applicable standard.

There was no explicit identification or monetary consideration of the expected features within the product.

Features which in their nature and severity slightly exceed normal use but do not constitute unacceptable damage will be documented and identified under signs of use if necessary.

Damage or defects which, according to the underlying standard, can no longer be attributed to normal use or wear and tear are listed in the product under "Depreciating Factors".

Depending on the product specification, a monetary ID can be provided. If this takes place, the costs can be 100% d or pro rata depending on the vehicle's age and mileage.

Previous damages

Professionally repaired previous damages were found at the vehicle.



Figure 1: Diagonal front (left)



Figure 2: Diagonal front (right)



Figure 3: Diagonal rear (left)



Figure 4: Diagonal rear (right)



Figure 5: Interior - front



Figure 6: Interior - rear



Figure 7: Instrument cluster



Figure 8: Instrument panel



Figure 9: Interior 360° view ([Online link](#))



Figure 10: Cargo area



Figure 11: VIN



Figure 12: Mounted tyres



Figure 13: Documents



Figure 14: Documents



Figure 15: Additional tyres



Figure 16: Misc.



Figure 17: Misc.



Figure 18: Misc.



Figure 19: Misc.



Figure 20: Misc.



Figure 21: Misc.



Figure 22: Misc.



Figure 23: Misc.



Figure 24: Misc.

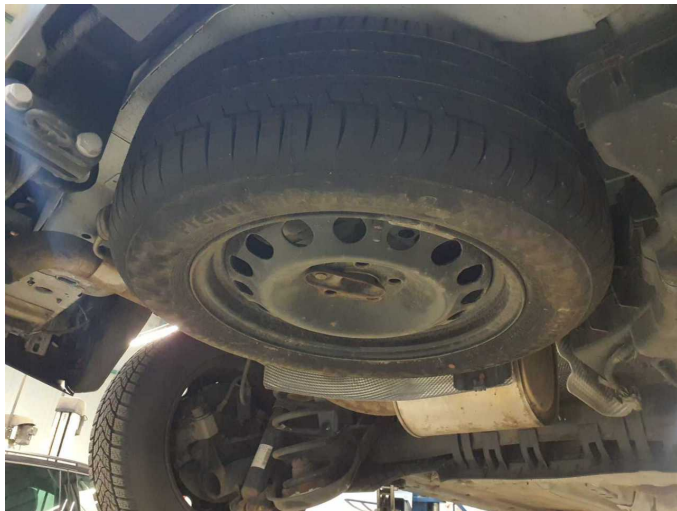


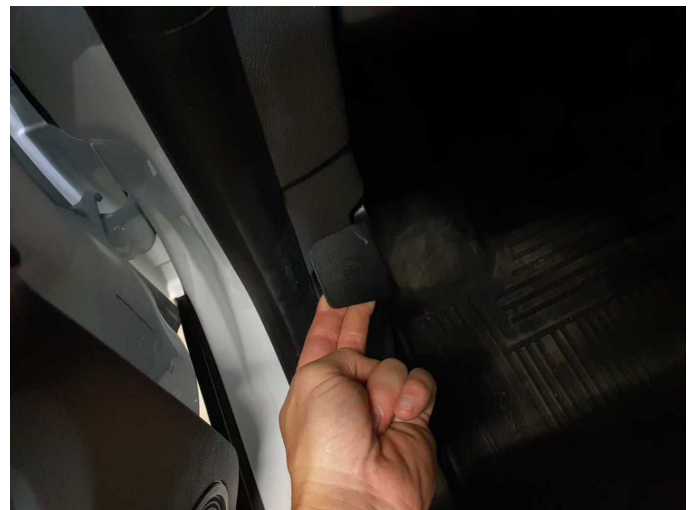
Figure 25: Misc.



Figure 26: Misc.



Damage 1: Bonnet: Bonnet (Seilzug gerissen) - Non-operational - Replace



Damage 1: Bonnet: Bonnet (Seilzug gerissen) - Non-operational - Replace



Damage 2: Side panel - rear left side: Side panel - Dent / paintcoat damage - Repair and paint



Damage 2: Side panel - rear left side: Side panel - Dent / paintcoat damage - Repair and paint



Damage 2: Side panel - rear left side: Side panel - Dent / paintcoat damage - Repair and paint



Repainting 1: Bonnet



Repainting 1: Bonnet



Wartungshistorie

(gemäß Auftraggeber Informationen)

Fahrgestellnummer: WF0RXXWPGRMK87076
Hersteller / Modell: FORD FORD Transit Connect 240 L1 Trend

Datum	KM-Stand	Beschreibung
12.12.2023	17.512	Bremsflüssigkeit; Bremsflüssigkeit ern; Motoröl b. Wartung; Ölfilter ern; Regelwartungsdienst; Wartung Sonstiges