



Expertise

Protocol number: 41637653
Order No. / Reference: 25232608
Inspection date: 19 Sept 2025

Manufacturer: Ford

Model: Transit Connect 220 L1 S&S Trend

VIN: WF0RXXWPGRLD24616



Vehicle details

Manufacturer / Type / Model / Equipment

Ford Transit Connect 220 L1 S&S Trend

Vehicle Identification number	WF0RXXWPGRLD24616
Mileage (Read)	134,135 km
First registration	11 Sept 2020
Number of holders	1
Next periodical technical inspection	09/2026
(Report on hand)	

Power / Engine displacement	74 kw / 1,499 ccm
Fuel type / Cylinder	Diesel / 4
Gearbox / Number of gears	Manual / 6
Type of drive	Front drive
Type of vehicle	Van
Colour / colour code	Frozen White
Doors / Seats	4 / 3
Upholstery type	Cloth
Colour of upholstery	Black



Vehicle details

Maintenance booklet / proof	digital proof / complete	Next maintenance in	17 %
Last maintenance on / at	09/2024 at 110,042 km		
Key is / should be	2 / 2	FZG documents	ZB#2 (B) was available (copy), ZB#1 (S) was not available
		Letter No.	FV090855
Previous damage / Accident	None detectable	Repainting	None detectable
Inspection conditions	sufficient	Lifting equipment / pit	yes
Test drive	Not performed	Engine function test	Performed
Manufacturer key number/ type code number	8566 / BMM 01593		
Emission standard	EURO6;WLTP;CH;PI/CI; N1 II	Fine dust sticker	
Permitted total weight	2,385 kg	Empty weight	

Tyres

Mounted tyres

#	Tyre size	Type of tyre	Manufacturer	Tread depth
1)	205/60 R16 96H	Summer tyres on Steel rim with wheel cover	Continental	3mm / 3mm
2)	205/60 R16 96H	Summer tyres on Steel rim with wheel cover	Continental	4mm / 4mm

Additional tyres

#	Tyre size	Type of tyre	Manufacturer	Tread depth
1)	205/60 R16 96H	Winter tyres on Steel	Goodyear	4mm / 3mm
2)	205/60 R16 96H	Winter tyres on Steel	Goodyear	4mm / 4mm

Replacement

Typ	Tyre size	Type of tyre	Manufacturer	Tread depth
	Tirefit	Expiration date 06/2024		

Legend: Tread depth information for tires on the left is in the first place, for tires on the right is in the second place on the axle in the direction of travel

Equipment

Standard equipment

- | | |
|---|--|
| <ul style="list-style-type: none"> • ABS with EBD • Exterior mirror, narrow mirror format • Hill start assist • On-board computer including outside temperature display • Double rear door without window • Third brake light • Front window lifter, electric • FordPass Connect • Warranty 2-year Ford new car warranty including the Ford Assistance mobility guarantee • Interior lighting in the passenger/cargo area with delay circuit • Paint finish: Uni • Load compartment protective floor plastic, molded • Steering column, adjustable in height and reach • Fog light • Radio: Ford Audio System 2 • Wheels: Steel wheels 6.5 J x 16 with 205/60 R 16 tires and hubcaps • Power steering, electro-mechanical • Height-adjustable front seat belts • Front spoiler lip • Dust and pollen filter • Power socket: 12-volt connection on the front center console • Front bumper and rear bumper end caps painted in body color • Child safety lock on sliding doors • Electronic immobilizer (EPATS) • Central locking with remote control | <ul style="list-style-type: none"> • Driver's side airbag • Battery, reinforced • Rubberized floor covering, front • Diesel particulate filter (DPF) • tachometer • Electronic Safety and Stability Program (ESP) • Ford Easy Fuel • Heated windscreen • Transmission: 6-speed transmission • Glove compartment with lid • Front interior lighting with delay circuit • Front air conditioning including semi-electronic recirculation • Load compartment lining, side, half-height • Center console, front • Emergency brake light • Wheels: Tire repair kit • Sliding door rear, right • Side protection strips, plastic • Safety Brake Assist • Safety door lock, automatic (45 sec.) • Start-stop system • Storage compartment, concealed, on dashboard • Power socket: 12-volt connection in storage compartment on dashboard (driver's side) • Daytime running light • Partition to the cargo area without windows • Lashing eyes • Heat-insulating glazing, slightly tinted • Auxiliary heater, electric (PTC), front |
|---|--|

Extra equipment

- | | |
|---|--|
| <ul style="list-style-type: none"> • Airbag: Front airbag for passenger • Floor covering: Front floor mats, all-weather floor mats (2-piece set) • DPF regenerator, manual • Package: Industry package Service Line Light (Sortimo Sobogrip mounting floor in the loading area with anti-slip coating - Sortimo shelving system on the left side of the loading area) • Radio: Ford Audio System 10 (Ford SYNC 3 with AppLink 6" touchscreen radio (FM/AM), 2 USB ports for connecting USB storage devices for music playback, 4 front speakers, Bluetooth hands-free system and audio streaming, emergency call assistant, SMS reading function, SMS sending function, voice control for audio and telephony, support for Android Auto and Apple CarPlay, 14 different languages, graphic and acoustic, rearview camera including rear parking sensors, phase diversity antenna, DAB/DAB+) • Partition to the cargo area with through-loading opening without window | <ul style="list-style-type: none"> • Exterior mirrors, electrically adjustable, heated with blind spot assistant (blind spot assistant including Cross Traffic Alert) • Remote control: 2nd remote control key for central locking (instead of conventional key) • Parking pilot system front and rear • Pre-Collision Assist, camera-based (with pedestrian and cyclist detection, including Automated Emergency Braking (AEB), Dynamic Brake Support (DBS), Forward Collision Warning (FCW) • Crosswind Assist and Rollover Protection (RSC - Roll Stability Control) |
|---|--|



- Seats: Seat Package 20 (Capitol/City fabric in Ebony (black) - Double passenger seat (with storage compartment under the smaller seat section), variably foldable - Driver's seat, 3-way manually adjustable (forward/backward, height, backrest) - Height-adjustable headrests - Manual lumbar support (driver's seat) - Airbag package (front passenger airbag, side airbags for driver and front passenger) - Heated driver's seat - Unfastened seatbelt warning system for driver)

Brief expert findings

Documents submitted	At the time of the inspection, the registration certificate Part 2 (letter) was available, but the registration certificate Part 1 (certificate) was not. (Copy)
VIN comparison	The vehicle identification number (VIN) was read from the vehicle and its conformity with the submitted documents was verified during the inspection by the undersigned.
Inspection	The inspection conditions were sufficient for the assessment of the vehicle. Lifting equipment and a pit were available for examining the vehicle.
Test drive	No test drive/maneuvering was carried out during the inspection of the vehicle.
Engine function test	An engine test run was performed.

Value reducing factors

No.	Component group	Description
1	Equipment	Tirefit filler - Due - Replace
2	Body	Body - Glued / labelled - De-glue / neutralise
3	Front bumper	Front bumper - Scratch(es) - Smart repair
4	Boot lid / rear door	Rear door - right side - Dent / paintcoat damage - Smart repair
5	Door - front left side	Door - Dent / paintcoat damage - Smart repair

Wear and tear

No.	Component group	Description
1	Rear bumper	Rear bumper (unpainted) - Scratch(es) - No deduction
2	Wheel / tyres	Wheel cover - front left side - Scratch(es) - No deduction
3	Door - rear right side	Door - Scratch(es) - No deduction
4	Boot lid / rear door	Rear door - left side - dent(s) - No deduction
5	Wheel / tyres	Wheel cover - rear left side - Scratched - No deduction
6	Wheel / tyres	Wheel cover - front right side - Scratched - No deduction
7	2nd wheel set	Tyres - complete set - Worn - No deduction

The vehicle shows signs of wear commensurate with its age and use.

Order/Scope of order

The order was placed to prepare a sales report for the vehicle described. This includes the following:

- Description of core relevant information about the vehicle
- Documentation of equipment features
(Delivery by third-party service providers)
- Documentation of damage, defects, missing parts
- Documentation of previous damage, unrepaired previous damage, repainting
- a brief visual or functional inspection of the equipment details if possible.
(Functional tests of driver assistance systems are not included in the scope of services!)
- a photo documentation of the vehicle



Basis for the order

This product is based on the guidelines for vehicle returns and valuations of light commercial vehicles from Alphabet Fuhrparkmanagement GmbH. The expert makes the explicit findings in each individual case objectively within the framework of the specified standards based on his or her own expertise.

The vehicle inspection takes place in a disassembled state.

Damage or defects that can only be detected during disassembly/diagnosis work or through advanced knowledge remain within the scope of the prognosis risk. An extended risk exists for concealed defects caused by fraudulent deception and not identifiable by the expert.

Damage or defects resulting from normal use or wear and tear of the vehicle will be accepted according to the applicable standard.

There was no explicit identification or monetary consideration of the expected features within the product.

Features which in their nature and severity slightly exceed normal use but do not constitute unacceptable damage will be documented and identified under signs of use if necessary.

Damage or defects which, according to the underlying standard, can no longer be attributed to normal use or wear and tear are listed in the product under "Depreciating Factors".

Depending on the product specification, a monetary ID can be provided. If this takes place, the costs can be 100% d or pro rata depending on the vehicle's age and mileage.

Previous damages

Apparently, no repaired previous damage could be found on the vehicle.

Comments

- Winterradsatz ist kein Bestandteil des Auslieferumfangs.



Figure 1: Diagonal front (left)



Figure 2: Diagonal front (right)



Figure 3: Diagonal rear (left)



Figure 4: Diagonal rear (right)

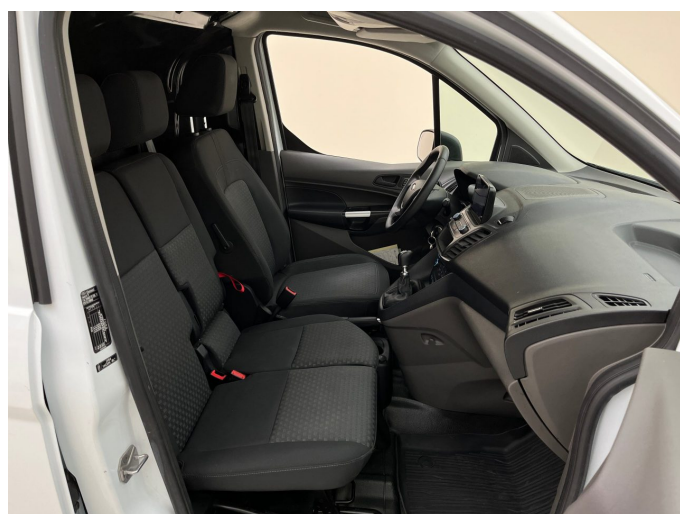


Figure 5: Interior - front



Figure 6: Interior - rear



Figure 7: Instrument cluster



Figure 8: Instrument panel



Figure 9: Interior 360° view



Figure 10: Cargo area



Figure 11: VIN



Figure 12: Mounted tyres

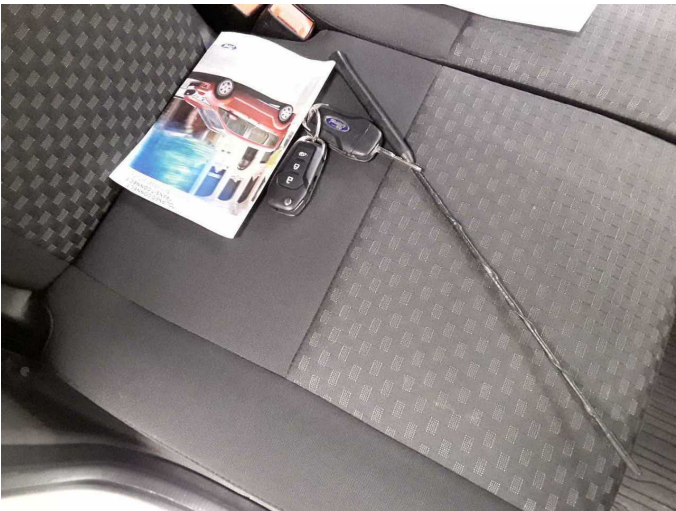


Figure 13: Documents



Figure 14: Documents



Figure 15: Documents



Figure 16: Documents



Figure 17: Additional tyres



Figure 18: Misc.



Figure 19: Misc.



Figure 20: Misc.



Figure 21: Misc.



Figure 22: Misc.



Figure 23: Misc.



Damage 1: Equipment: Tirefit filler - Due - Replace



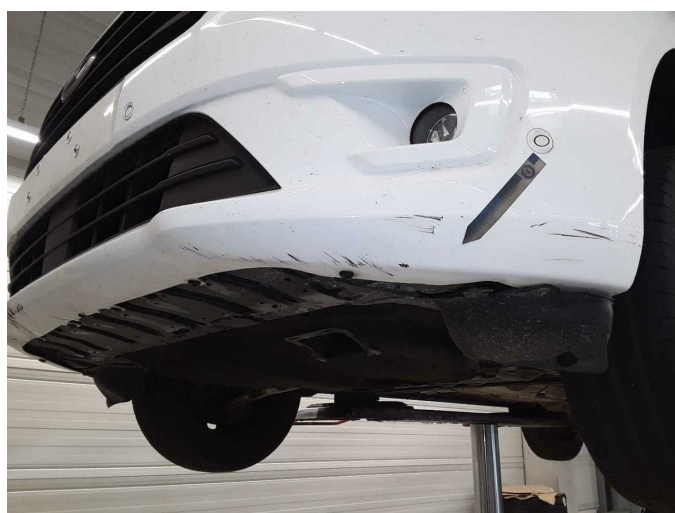
Damage 2: Body: Body - Glued / labelled - De-glue / neutralise



Damage 3: Front bumper: Front bumper - Scratch(es) - Smart repair



Damage 3: Front bumper: Front bumper - Scratch(es) - Smart repair



Damage 3: Front bumper: Front bumper - Scratch(es) - Smart repair



Damage 3: Front bumper: Front bumper - Scratch(es) - Smart repair



Damage 4: Boot lid / rear door: Rear door - right side - Dent / paintcoat damage - Smart repair



Damage 4: Boot lid / rear door: Rear door - right side - Dent / paintcoat damage - Smart repair



Damage 4: Boot lid / rear door: Rear door - right side - Dent / paintcoat damage - Smart repair



Damage 5: Door - front left side: Door - Dent / paintcoat damage - Smart repair



Damage 5: Door - front left side: Door - Dent / paintcoat damage - Smart repair



Damage 5: Door - front left side: Door - Dent / paintcoat damage - Smart repair



Damage 5: Door - front left side: Door - Dent / paintcoat damage - Smart repair



Damage 5: Door - front left side: Door - Dent / paintcoat damage - Smart repair



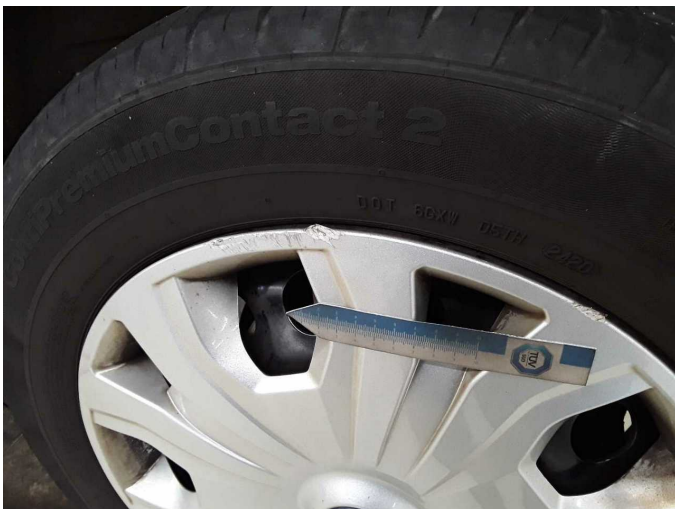
Wear and tear 2: Wheel / tyres: Wheel cover - front left side - Scratch(es) - No deduction



Wear and tear 4: Boot lid / rear door: Rear door - left side - dent(s) - No deduction



Wear and tear 5: Wheel / tyres: Wheel cover - rear left side - Scratched - No deduction



Wear and tear 5: Wheel / tyres: Wheel cover - rear left side - Scratched - No deduction



Wear and tear 6: Wheel / tyres: Wheel cover - front right side - Scratched - No deduction



Wear and tear 6: Wheel / tyres: Wheel cover - front right side - Scratched
- No deduction



Wear and tear 6: Wheel / tyres: Wheel cover - front right side - Scratched
- No deduction



Wartungshistorie

(gemäß Auftraggeber Informationen)

Fahrgestellnummer: WF0RXXWPGRD24616
Hersteller / Modell: FORD FORD Transit Connect 220 L1 S&S Trend

Datum	KM-Stand	Beschreibung
12.09.2024	110.042	Bremse Sonstiges; Bremsflüssigkeit; Bremsflüssigkeit ern; Bremsklötze hinten; Bremsscheiben + Klötze h; Bremsscheiben hinten; HU + AU; Kraftstofffilter ern; Luftfiltereinsatz ern; Motoröl b. Wartung; Ölfilter ern; Regelwartungsdienst; Wartung Sonstiges
11.09.2023	82.930	Bremse Sonstiges; Bremsklötze vorne; Bremsscheiben + Klötze v; Bremsscheiben vorne; Motoröl b. Wartung; Ölfilter ern; Regelwartungsdienst; Wartung Sonstiges
10.08.2022	53.228	Bremse Sonstiges; Bremsflüssigkeit; Bremsflüssigkeit ern; Bremsklötze hinten; HU + AU; Kraftstofffilter ern; Luftfiltereinsatz ern; Motoröl b. Wartung; Ölfilter ern; Regelwartungsdienst; Wartung Sonstiges
17.08.2021	26.390	Kleine Inspektion; Motoröl b. Wartung; Ölfilter ern; Wartung Sonstiges