

FORD TRANSIT (30)
TRANSIT CUSTOM FOURGON 280 L1H1 2.0
ECOBBLUE 110 CH TREND



VIN NO WF0RXXTA1RRA42413
Registration Number GX922QL

MOT Date



Last Service



Number of Owners



Last Service Mileage



Number of Keys



First Registration Date



2024-06-18

Odometer Reading



22833 km

Country First Registered



Inspection Report Summary

| | | | |
|-------------------------|------------------------|----------------|-----------------|
| Customer | BCAuto Encheres | Report Number | P20250902141151 |
| Inspection Date / Place | 2025-09-02 / BCA ROPPE | Cosmetic Grade | 5 |

Vehicle Summary

| | | | |
|-------------------|-------------|--------------------|-------------------------|
| Vehicle Condition | Not Movable | VAT Type | Qualified - Normal Rate |
| Fuel Type | Diesel | Gearbox Type | Manual |
| Colour | White | Engine Size (cc) | 1996 |
| Engine Size | 2.0 | No of Doors | 4 |
| Body Type | Box Wagon | Drive Train | Front |
| Seat Colour | | No of Seats | 3 |
| Charging Cables | | WLTP CO2 Emissions | 205 |

Vehicle History & Documents

| | | | |
|------------------------|------------|----------------------|----|
| Service Book Available | - | Next Service Mileage | km |
| Previous Usage | Normal Use | Imported | |
| Manufacturer Warrenty | | | |

Equipment

Central locking

Rear parking sensors

Front parking sensors

Radio

Cruise control

Power assisted steering

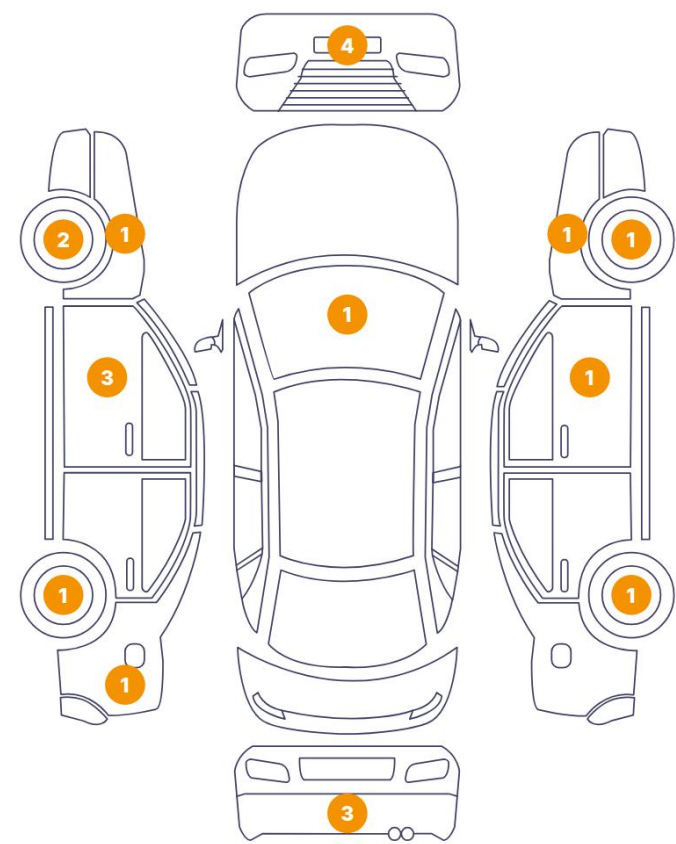
Equipment Details

Air Conditioning

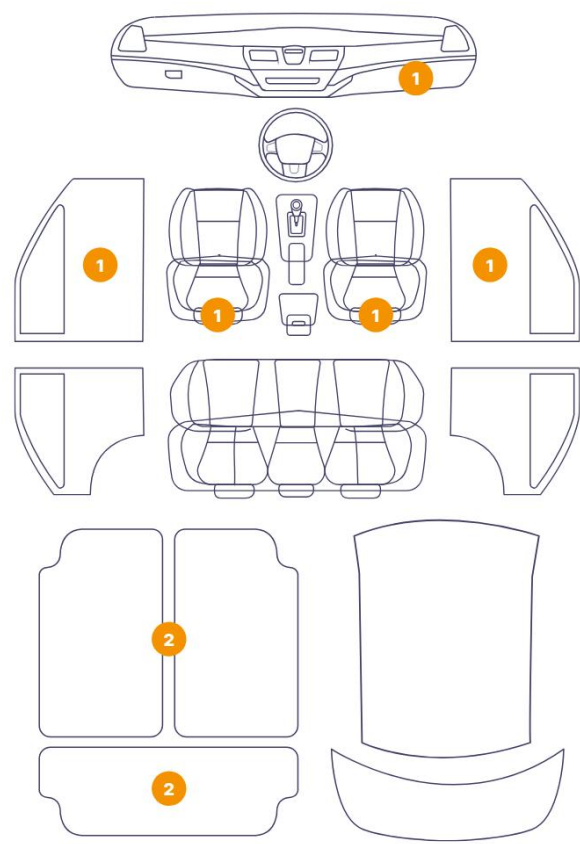
Yes

Cosmetic Damage

20 Dommages



9 Dommages



| Component | | Damage | Comments |
|-----------|-----------------------------|-------------------------------|----------|
| 1 | Panel Filling / Front Left | Interior / Dirty | |
| 2 | Floor Carpet | Interior / Dirty | |
| 3 | Seat Cushion / Front Left | Interior / Stained | |
| 4 | Trunk Carpet | Interior / Scraped | |
| 5 | Trunk Carpet | Interior / Stained | |
| 6 | Panel Filling / Front Right | Interior / Dirty | |
| 7 | Floor Carpet | Interior / Dirty | |
| 8 | Seat Cushion / Front Right | Interior / Dirty | |
| 9 | Dashboard / Front | Interior / Scraped | |
| 10 | Bumper / Front | Bodywork / Dent / Deformation | |
| 11 | Windshield / Front | Glass Break | |
| 12 | Corner Bumper / Front Right | Bodywork / Breakage | |
| 13 | Corner Bumper / Front Right | Bodywork / Breakage / Hole | |

| | | |
|----|-----------------------------|-------------------------------|
| 14 | Corner Bumper / Front Right | Bodywork / Dent / Deformation |
| 15 | Wheel Arch / Front Left | Bodywork / Breakage |
| 16 | Fender / Front Left | Bodywork / Dent / Deformation |
| 17 | Mirror / Front Left | Bodywork / Breakage |
| 18 | Mirror Glass / Front Left | Missing Part |
| 19 | Rim / Front Left | Out of Bodywork / Scratch |
| 20 | Door / Front Left | Bodywork / Dent / Deformation |
| 21 | Side Panel / Back Left | Bodywork / Dent / Deformation |
| 22 | Hubcap / Back Left | Out of Bodywork / Scratch |
| 23 | Corner Bumper / Back Left | Bodywork / Dent / Deformation |
| 24 | Corner Bumper / Back Left | Paint / Scratch / Line |
| 25 | Bumper / Back | Paint / Scratch / Line |
| 26 | Hubcap / Back Right | Missing element hubcap |
| 27 | Hubcap / Front Right | Out of Bodywork / Scratch |
| 28 | Door / Front Right | Bodywork / Dent / Deformation |
| 29 | Fender / Front Right | Paint / Scratch / Line |



1. Panel Filling / Front Left
Interior / Dirty -



2. Floor Carpet
Interior / Dirty -



3. Seat Cushion / Front Left
Interior / Stained -



4. Trunk Carpet
Interior / Scraped -



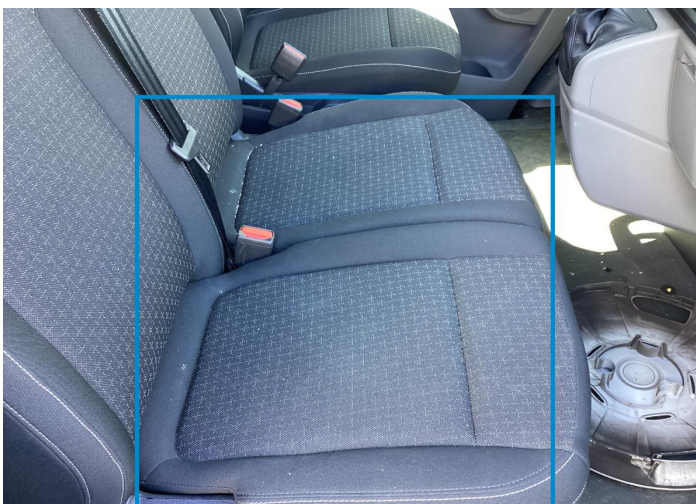
5. Trunk Carpet
Interior / Stained -



6. Panel Filling / Front Right
Interior / Dirty -



7. Floor Carpet
Interior / Dirty -



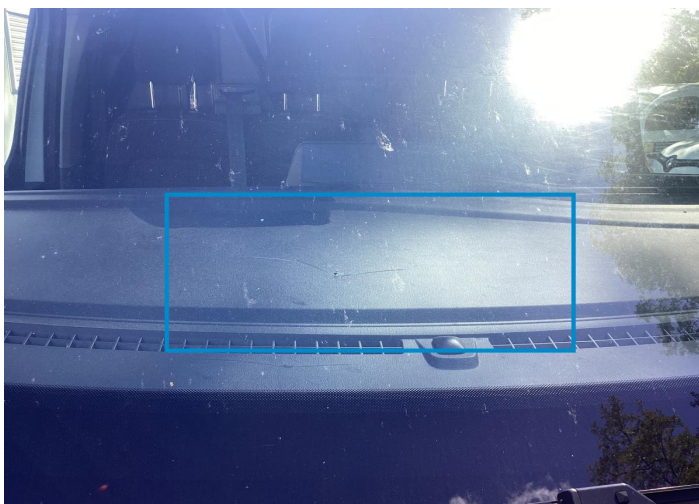
8. Seat Cushion / Front Right
Interior / Dirty -



9. Dashboard / Front
Interior / Scraped -



10. Bumper / Front
Bodywork / Dent / Deformation -



11. Windshield / Front
Glass Break -



12. Corner Bumper / Front Right
Bodywork / Breakage -



13. Corner Bumper / Front Right
Bodywork / Breakage / Hole -



14. Corner Bumper / Front Right
Bodywork / Dent / Deformation -



15. Wheel Arch / Front Left
Bodywork / Breakage -



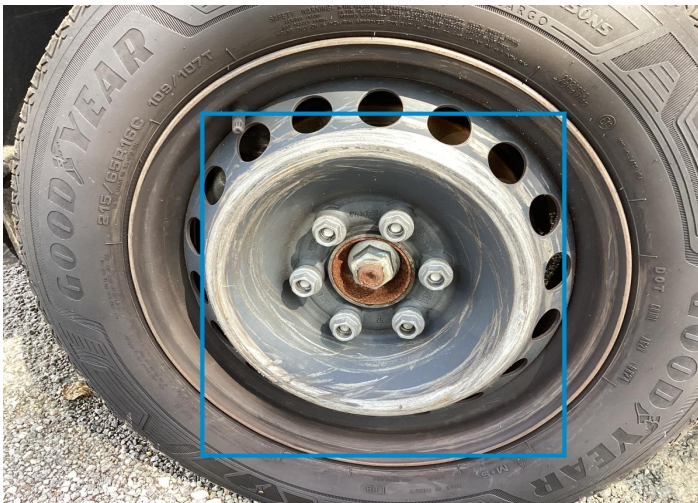
16. Fender / Front Left
Bodywork / Dent / Deformation -



17. Mirror / Front Left
Bodywork / Breakage -



18. Mirror Glass / Front Left
Missing Part -



19. Rim / Front Left
Out of Bodywork / Scratch -



20. Door / Front Left
Bodywork / Dent / Deformation -



21. Side Panel / Back Left
Bodywork / Dent / Deformation -



22. Hubcap / Back Left
Out of Bodywork / Scratch -



23. Corner Bumper / Back Left
Bodywork / Dent / Deformation -



24. Corner Bumper / Back Left
Paint / Scratch / Line -



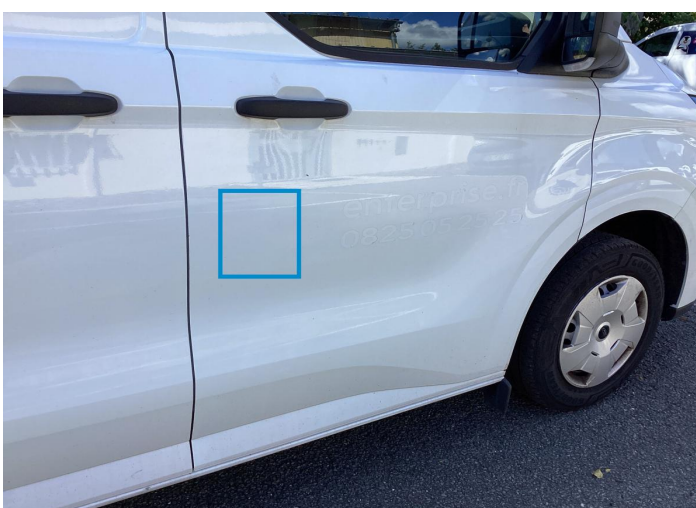
25. Bumper / Back
Paint / Scratch / Line -



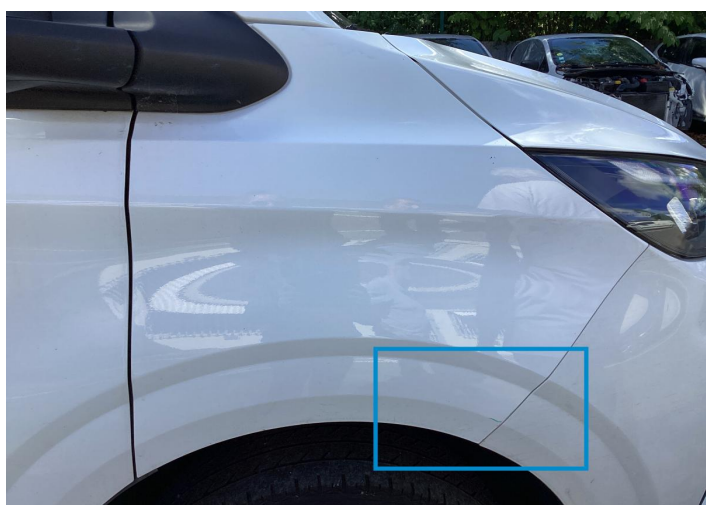
26. Hubcap / Back Right
Missing element hubcap -



27. Hubcap / Front Right
Out of Bodywork / Scratch -



28. Door / Front Right
Bodywork / Dent / Deformation -



29. Fender / Front Right
Paint / Scratch / Line -

Mechanical Condition


Tyres

Presence Anti-Theft Lock Nut 

 *No troubles detected, good condition or correct tests, according to vehicle age and mileage*

 *Damages or malfunction detected that requires repairs by the buyer*

 *Not applicable*

 *Not tested*

Disclaimer Section

The test drive is done on a flat surface and lasts about 2 minutes. The driven distance is a minimum of 300 meters, including a u-turn, an acceleration and a braking phase. The highest speed achieved during this test is 50km/h. The mechanical check is a visual and dynamic diagnosis without any disassembly. We cannot guarantee any mechanical wear part.