



Expertise

Protocol number: 39810053
Order No. / Reference: 24714967
Inspection date: 20 May 2025

Manufacturer: Ford

Model: Focus Turnier 1.5 EcoBlue Start-Stopp-System Aut. TITANIUM

VIN: WF0PXXGCHPPD65118



Vehicle details	
Manufacturer / Type / Model / Equipment	
Ford Focus Turnier 1.5 EcoBlue Start-Stopp-System Aut. TITANIUM	
Vehicle Identification number	WF0PXXGCHPPD65118
Mileage (Read)	47,853 km
First registration	29 Mar 2023
Number of holders	1
Power / Engine displacement	85 kw / 1,499 ccm
Fuel type / Cylinder	Diesel / 4
Gearbox / Number of gears	Automatic / 8
Type of drive	Front drive
Type of vehicle	Station wagon
Colour / colour code	Chroma Blue Metallic
Doors / Seats	5 / 5
Upholstery type	Cloth
Colour of upholstery	Black-Anthracite



Vehicle details

Maintenance booklet / proof	digital proof / complete	Next maintenance in	74 %
Last maintenance on / at	01/2025 at 43,726 km		
Key is / should be	1 / 2	FZG documents	ZB#2 (B) was available (copy), ZB#1 (S) was not available
		Letter No.	GT891271
Previous damage / Accident	None detectable	Repainting	None detectable
Inspection conditions	Sufficient	Lifting equipment / pit	yes
Test drive	Not performed	Engine function test	Performed
Manufacturer key number/ type code number	8566 / BYE 00002		
Emission standard	EURO6;WLTP;AP;PI/CI; M, N1 I	Fine dust sticker	
Permitted total weight	2,035 kg	Empty weight	

Tyres

Mounted tyres

#	Tyre size	Type of tyre	Manufacturer	Tread depth
1)	205/60 R16 92V	Summer tyres on Light alloy	Goodyear	5mm / 5mm
2)	205/60 R16 92V	Summer tyres on Light alloy	Goodyear	5mm / 5mm

Additional tyres

#	Tyre size	Type of tyre	Manufacturer	Tread depth
1)	205/60 R16 92H	Winter tyres on Light alloy	Dunlop	8mm / 8mm
2)	205/60 R16 92H	Winter tyres on Light alloy	Dunlop	8mm / 8mm

Replacement

Typ	Tyre size	Type of tyre	Manufacturer	Tread depth
	Tirefit	Expiration date 03/2027		

Legend: Tread depth information for tires on the left is in the first place, for tires on the right is in the second place on the axle in the direction of travel



Equipment

Standard equipment

- | | |
|---|---|
| <ul style="list-style-type: none"> • Airbag: Passenger airbag deactivation • Exterior mirrors painted in body color, electrically adjustable, heated and foldable • Hill start assist • Woven fabric headliner • Roof spoiler painted in body color • tachometer • Electronic Safety and Stability Program (ESP) • Lane Assistant including Lane Keeping Assist • Electric windows front and rear • Ford Power start function • Luggage compartment cover • Speed limiter • Transmission: 8-speed automatic transmission • Back window, heater • Interior lighting with LED technology • Intelligent security system • Air conditioning with automatic temperature control • LED taillights • Steering wheel: 3-spoke design • Make-up mirrors in driver and passenger sun visors • MyKey key system (individually programmable second key) • Emergency Call Assistant • Parking pilot system front and rear • Post-Collision Assist • Tire repair kit • Windscreen wipers with rain sensor (sensitivity variably adjustable) • Selective driving mode switch • Seats: Passenger seat height adjustable, manual • Seats: Rear seat backrest • Start-stop system • Carpet floor mats front • Lashing eyes in the luggage compartment • Electronic immobilizer • Central locking with remote control and remote luggage compartment release | <ul style="list-style-type: none"> • Anti-lock braking system (ABS) with electronic brake-force distribution (EBD) • Attachment points behind the 2nd row of seats for mounting the safety net • Roof rails, aluminum • Diesel particulate filter (DPF) • Electronic Shifter • Driver information system with on-board computer, color (10.7 cm screen diagonal) • Electric parking brake with auto-hold function • FordPass Connect including live traffic information • Luggage compartment lighting • Cruise control system • Glove compartment, illuminated • Rear window wiper • Interior mirror, automatically dimming • Isofix mount • Headrests 2 front and 3 rear, height adjustable • LED headlights • Steering column, adjustable • Center console "Premium" front • Navigation: Ford SYNC 4 including Ford navigation system with AppLink, 13.2" touchscreen and DAB/DAB+ • Upholstery: Cloth • Pre-Collision Assist • Tire pressure monitoring system (TPMS) • Headlight dipped beam • Headlight assistant with day/night sensor • Power steering electro-mechanical speed-dependent • Seats: Driver's seat height adjustable • Seats: Front sports seats with increased lateral support • 12 volt socket in the luggage compartment • Variable radiator air intake • Unfastened seat belt warning system for the 1st and 2nd row of seats |
|---|---|

Extra equipment

- | | |
|---|--|
| <ul style="list-style-type: none"> • anti-theft alarm system including interior monitoring • eCall • Paint finish: metallic • Safety partition net for luggage compartment • Seats: Front seats individually and variably heated • Tires: 6.5 J x 16 alloy wheels (4) with 205/60 R16 tires (in 6x2-spoke design) | <ul style="list-style-type: none"> • Package: Driver Assistance Package II (Drive Assist Intelligent cruise control, adaptive lane pilot, traffic jam assistant with stop & go traffic sign recognition, wrong-way driver warning radio, evasive assist, distance display and distance warning, fatigue warning, high beam assist (in conjunction with the adaptive LED matrix headlights with anti-glare high beam assistant), blind spot assist with cross traffic alert including emergency braking function (when reversing out of a parking space) and trailer detection, rear view camera with split view, folding exterior mirrors with surround view) |
|---|--|



Brief expert findings

Documents submitted	At the time of the inspection, the registration certificate part 2 (letter) was available, but the registration certificate part 1 (certificate) was not available. (Copy)
VIN comparison	The vehicle identification number (VIN) was read and the undersigned verified that it matched the documents submitted during the inspection.
Inspection	The inspection conditions were sufficient for the assessment of the vehicle. Lifting equipment and a pit were available for examining the vehicle.
Test drive	No test drive/maneuvering was carried out during the inspection of the vehicle.
Engine function test	An engine test run was performed.

Value reducing factors

No.	Component group	Description
1	Screen cleaning	Wiper arm - rear - Broken / torn - Replace
2	Boot lid / rear door	Boot lid - dent(s) - Smooth repair work
3	Roof	Roof rail - right side - dent(s) - Smart repair
4	Rear bumper	Rear bumper - Scratched - Paint
5	Front bumper	Front bumper - Scratched - Paint

Wear and tear

No.	Component group	Description
1	Roof	Roof - dent(s) - No deduction
2	Door - rear right side	Door - Scratch(es) - No deduction

The vehicle shows signs of wear commensurate with its age and use.

Missing parts

Description

Equipment - Vehicle key

Order/Scope of order

The order was placed to prepare a sales report for the vehicle described. This includes the following:

- Description of core relevant information about the vehicle
- Documentation of equipment features
(Delivery by third-party service providers)
- Documentation of damage, defects, missing parts
- Documentation of previous damage, unrepaired previous damage, repainting
- a brief visual or functional inspection of the equipment details if possible.
(Functional tests of driver assistance systems are not included in the scope of services!)
- a photo documentation of the vehicle



Basis for the order

This product is based on the Alphabet Fuhrpark GmbH guidelines for vehicle returns and valuations. The expert makes the explicit findings in each individual case objectively within the framework of the specified standards based on his or her own expertise.

The vehicle inspection takes place in a disassembled state.

Damage or defects that can only be detected during disassembly/diagnosis work or through advanced knowledge remain within the scope of the prognosis risk. An extended risk exists for concealed defects caused by fraudulent deception and not identifiable by the expert.

Damage or defects resulting from normal use or wear and tear of the vehicle will be accepted according to the applicable standard.

There was no explicit identification or monetary consideration of the expected features within the product.

Features which in their nature and severity slightly exceed normal use but do not constitute unacceptable damage will be documented and identified under signs of use if necessary.

Damage or defects which, according to the underlying standard, can no longer be attributed to normal use or wear and tear are listed in the product under "Depreciating Factors".

Depending on the product specification, a monetary ID can be provided. If this takes place, the costs can be 100% d or pro rata depending on the vehicle's age and mileage.

Previous damages

Apparently, no repaired previous damage could be found on the vehicle.



Figure 1: Diagonal front (left)



Figure 2: Diagonal front (right)



Figure 3: Diagonal rear (left)



Figure 4: Diagonal rear (right)



Figure 5: Interior - front



Figure 6: Interior - rear



Figure 7: Instrument cluster



Figure 8: Instrument panel



Figure 9: interior 360° view



Figure 10: Cargo area



Figure 11: VIN



Figure 12: Mounted tyres



Figure 13: Documents



Figure 14: Documents



Figure 15: Documents



Figure 16: Additional tyres



Figure 17: Navigation



Figure 18: Misc.



Figure 19: Misc.



Figure 20: Misc.



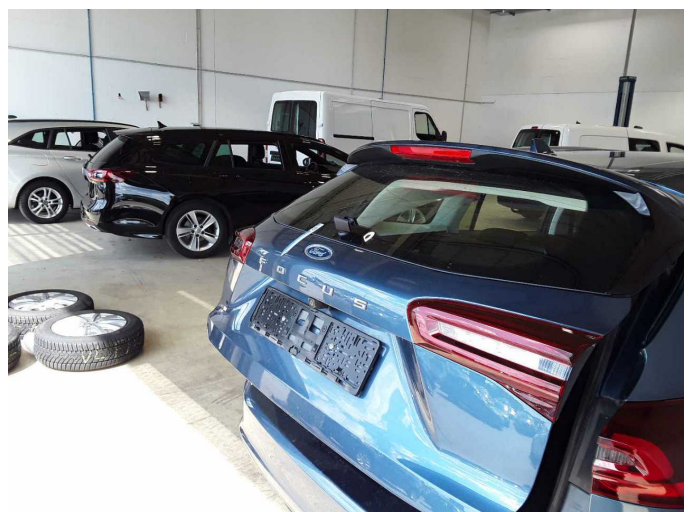
Figure 21: Misc.



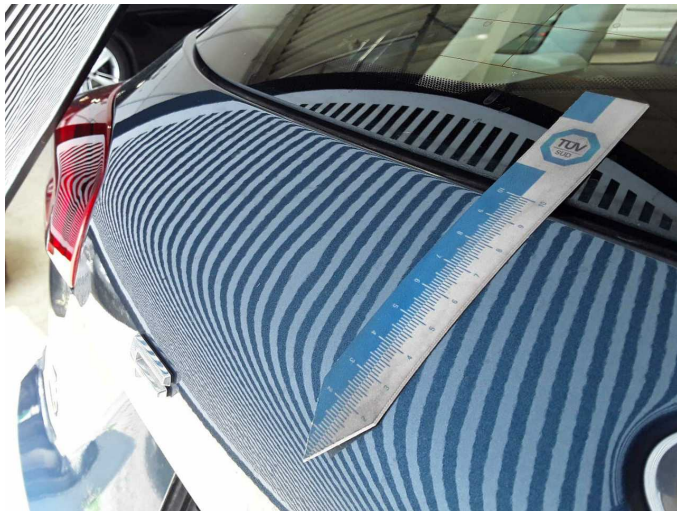
Damage 1: Screen cleaning: Wiper arm - rear - Broken / torn - Replace



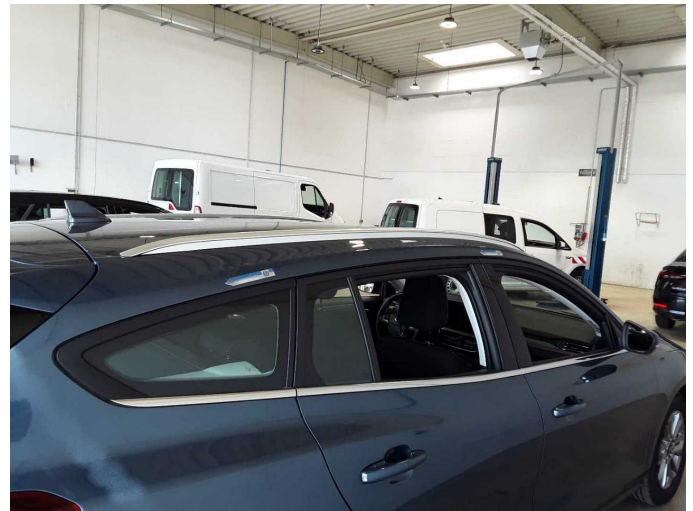
Damage 1: Screen cleaning: Wiper arm - rear - Broken / torn - Replace



Damage 2: Boot lid / rear door: Boot lid - dent(s) - Smooth repair work



Damage 2: Boot lid / rear door: Boot lid - dent(s) - Smooth repair work



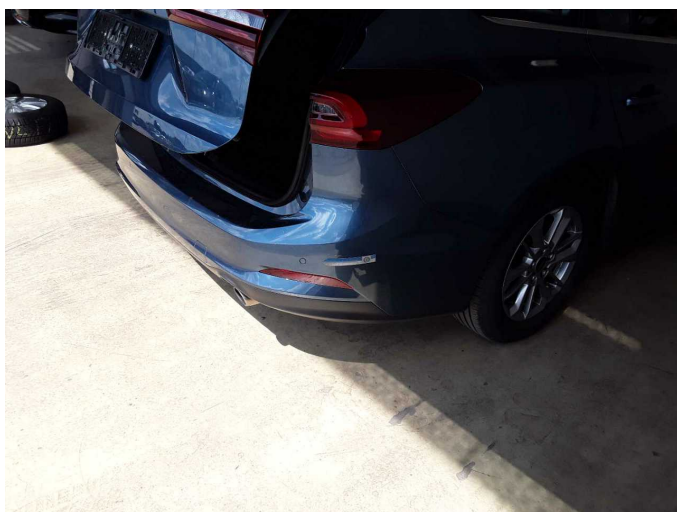
Damage 3: Roof: Roof rail - right side - dent(s) - Smart repair



Damage 3: Roof: Roof rail - right side - dent(s) - Smart repair



Damage 3: Roof: Roof rail - right side - dent(s) - Smart repair



Damage 4: Rear bumper: Rear bumper - Scratched - Paint



Damage 4: Rear bumper: Rear bumper - Scratched - Paint



Damage 5: Front bumper: Front bumper - Scratched - Paint



Damage 5: Front bumper: Front bumper - Scratched - Paint



Wear and tear 2: Door - rear right side: Door - Scratch(es) - No deduction



Wear and tear 2: Door - rear right side: Door - Scratch(es) - No deduction