



Expertise

Protocol number: 41458643
Order No. / Reference: 25179421
Inspection date: 9 Sept 2025

Manufacturer: Ford

Model: Focus Turnier 1.5 EcoBlue Start-Stopp-System Aut. TITANIUM
STYLE

VIN: WF0PXXGCHPNT51074



Vehicle details	
Manufacturer / Type / Model / Equipment	
Ford Focus Turnier 1.5 EcoBlue Start-Stopp-System Aut. TITANIUM STYLE	
Vehicle Identification number	WF0PXXGCHPNT51074
Mileage (Read)	124,887 km
First registration	19 Jul 2022
Number of holders	1
Next periodical technical inspection	08/2027
(Report on hand)	
Power / Engine displacement	88 kw / 1,499 ccm
Fuel type / Cylinder	Diesel / 4
Gearbox / Number of gears	Automatic / 8
Type of drive	Front drive
Type of vehicle	Station wagon
Colour / colour code	Magnetic Grau Metallic
Doors / Seats	5 / 5
Upholstery type	Cloth
Colour of upholstery	Anthracite-Black



Vehicle details

Maintenance booklet / proof	digital proof / incomplete	Next maintenance in	86 %
Last maintenance on / at	07/2025 at 120,747 km		
Key is / should be	2 / 2	FZG documents	ZB#2 (B) was available (copy), ZB#1 (S) was not available
		Letter No.	GK817468
Previous damage / Accident	None detectable	Repainting	None detectable
Inspection conditions	sufficient	Lifting equipment / pit	yes
Test drive	Not performed	Engine function test	Performed
Manufacturer key number/ type code number	8566 / BPV 00636		
Emission standard	EURO6;WLTP;AP;PI/CI; M, N1 I	Fine dust sticker	
Permitted total weight	2,035 kg	Empty weight	

Tyres

Mounted tyres

#	Tyre size	Type of tyre	Manufacturer	Tread depth
1)	205/60 R16 92H	Winter tyres on Light alloy	Goodyear	3mm / 3mm
2)	205/60 R16 92H	Winter tyres on Light alloy	Goodyear	3mm / 3mm

Additional tyres

#	Tyre size	Type of tyre	Manufacturer	Tread depth
1)	205/60 R16 96W	Summer tyres on Steel rim with wheel cover	Goodyear	6mm / 6mm
2)	205/60 R16 96W	Summer tyres on Steel rim with wheel cover	Goodyear	6mm / 6mm

Replacement

Typ	Tyre size	Type of tyre	Manufacturer	Tread depth
	Tirefit	Expiration date 04/2026		

Legend: Tread depth information for tires on the left is in the first place, for tires on the right is in the second place on the axle in the direction of travel



Equipment

Standard equipment

- Airbag: Passenger airbag deactivation
- Anti-lock braking system (ABS) with electronic brake-force distribution (EBD)
- Tires: 6.5 J x 16 design wheels (4) with 205/60 R16 tires
- Hill start assist
- Roof rails, aluminum
- Diesel particulate filter (DPF)
- Third brake light
- Electronic Safety and Stability Program (ESP)
- Lane Assistant including Lane Keeping Assist
- Electric windows front and rear
- Ford Easy Fuel
- Ford Power start function
- Luggage compartment cover
- Cruise control system
- Glove compartment, illuminated
- Rear window wiper
- Interior mirror automatically dimming
- Isofix mount
- Headrests (5)
- LED taillights
- Steering wheel: 3-spoke design
- Make-up mirrors in driver and passenger sun visors
- Center console "Premium" front
- Navigation: Ford SYNC 3 with AppLink, 8" touchscreen and DAB/DAB+
- Upholstery: Cloth
- Pre-Collision Assist
- Tire pressure monitoring system (TPMS)
- Shift paddles on the steering wheel
- Headlight dipped beam
- Selective driving mode switch
- Seats: Passenger seat height adjustment, manual
- Seats: Driver's seat manually height adjustable
- Seats: Front sports seats
- 12-volt socket in the luggage compartment
- Variable radiator air intake
- Unfastened seat belt warning system for the 1st and 2nd row of seats
- Ambient lighting, front
- Electrically folding exterior mirrors
- Attachment points behind the 2nd row of seats for mounting the safety net
- Woven fabric headliner
- Roof spoiler painted in body color
- tachometer
- Electronic Shifter - rotary switch for automatic transmission
- Driver information system with on-board computer, color (10.7 cm screen diagonal)
- Electric parking brake with auto-hold function
- Ford EcoCoach
- FordPass Connect including eCall and Wi-Fi hotspot
- Speed limiter
- Transmission: 8-speed automatic transmission
- Back window, heater
- Interior lighting with LED technology
- Intelligent security system
- Air conditioning with automatic temperature control
- Titanium-design grille
- LED headlights
- Steering wheel: Steering column, adjustable in height and reach
- MyKey key system (individually programmable second key)
- Emergency brake light
- Parking pilot system front and rear
- Post-Collision Assist
- Tire repair kit
- Rear seat backrest, foldable, 60:40 split
- Windscreen wipers with rain sensor
- Headlight assistant with day/night sensor
- Power steering electro-mechanical speed-dependent
- Seats: Driver and passenger seat backrests with map grid
- Seats: Driver's seat with adjustable lumbar support
- Start-stop system
- Carpet floor mats front
- Lashing eyes in the luggage compartment
- Immobiliser
- Central locking with remote control and remote luggage compartment release

Extra equipment

- Paintwork: Special metallic paint
- Safety partition net for luggage compartment
- Package: Winter (heated windscreen - heated steering wheel - front seats, individually and variably heated)



Brief expert findings

Documents submitted	At the time of the inspection, the registration certificate Part 2 (letter) was available, but the registration certificate Part 1 (certificate) was not. (Copy)
VIN comparison	The vehicle identification number (VIN) was read from the vehicle and its conformity with the submitted documents was verified during the inspection by the undersigned.
Inspection	The inspection conditions were sufficient for the assessment of the vehicle. Lifting equipment and a pit were available for examining the vehicle.
Test drive	No test drive/maneuvering was carried out during the inspection of the vehicle.
Engine function test	An engine test run was performed.

Value reducing factors

No.	Component group	Description
1	2nd wheel set	2 wheel covers - Scratched - Replace
2	Instrument panel	Centre console - rear - Scratch(es) - Loss in value
3	Seat - rear	Upholstery - Soiled - Conditioning
4	Side panel - rear right side	Side panel - Scratch(es) - Smart repair
5	Bonnet	Bonnet - dent(s) - Smooth repair work
6	Boot lid / rear door	Boot lid - dent(s) - Smooth repair work

Wear and tear

No.	Component group	Description
1	Body	Underbody panelling - Scratch(es) - No deduction
2	Body	Body - Scratch(es) - No deduction
3	Interior	Interior - Scratch(es) - No deduction
4	Rear bumper	Bumper - rear centre (Ladekante) - Scratch(es) - No deduction

The vehicle shows signs of wear commensurate with its age and use.

Order/Scope of order

The order was placed to prepare a sales report for the vehicle described. This includes the following:

- Description of core relevant information about the vehicle
- Documentation of equipment features
(*Delivery by third-party service providers*)
- Documentation of damage, defects, missing parts
- Documentation of previous damage, unrepaired previous damage, repainting
- a brief visual or functional inspection of the equipment details if possible.
(*Functional tests of driver assistance systems are not included in the scope of services!*)
- a photo documentation of the vehicle



Basis for the order

This product is based on the Alphabet Fuhrpark GmbH guidelines for vehicle returns and valuations. The expert makes the explicit findings in each individual case objectively within the framework of the specified standards based on his or her own expertise.

The vehicle inspection takes place in a disassembled state.

Damage or defects that can only be detected during disassembly/diagnosis work or through advanced knowledge remain within the scope of the prognosis risk. An extended risk exists for concealed defects caused by fraudulent deception and not identifiable by the expert.

Damage or defects resulting from normal use or wear and tear of the vehicle will be accepted according to the applicable standard.

There was no explicit identification or monetary consideration of the expected features within the product.

Features which in their nature and severity slightly exceed normal use but do not constitute unacceptable damage will be documented and identified under signs of use if necessary.

Damage or defects which, according to the underlying standard, can no longer be attributed to normal use or wear and tear are listed in the product under "Depreciating Factors".

Depending on the product specification, a monetary ID can be provided. If this takes place, the costs can be 100% d or pro rata depending on the vehicle's age and mileage.

Previous damages

Apparently, no repaired previous damage could be found on the vehicle.

Comments

- Der montierte Radsatz gehört nicht zur Ausstattung und wurde nicht in der Bewertung berücksichtigt.



Figure 1: Diagonal front (left)



Figure 2: Diagonal front (right)



Figure 3: Diagonal rear (left)



Figure 4: Diagonal rear (right)



Figure 5: Interior - front



Figure 6: Interior - rear



Figure 7: Instrument cluster



Figure 8: Instrument panel



Figure 9: Interior 360° view



Figure 10: Cargo area



Figure 11: VIN



Figure 12: Mounted tyres



Figure 13: Documents



Figure 14: Documents



Figure 15: Documents

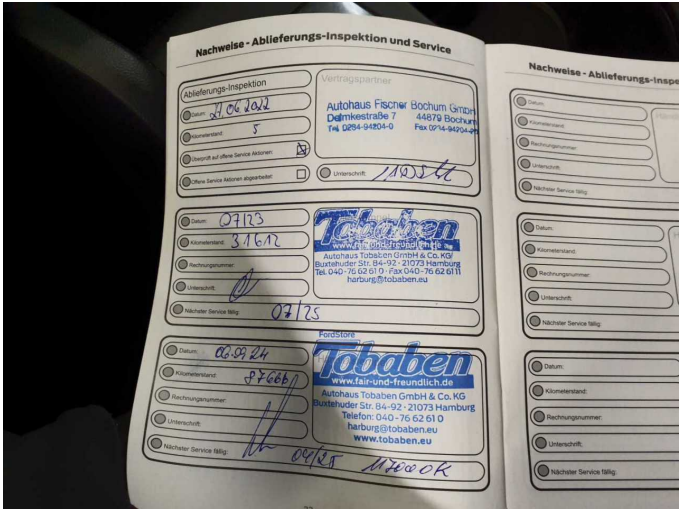


Figure 16: Documents

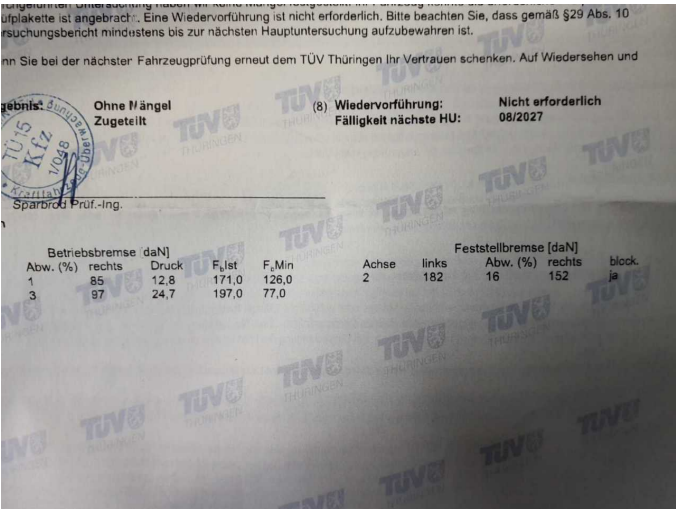


Figure 17: Documents



Figure 18: Additional tyres



Figure 19: Additional tyres



Figure 20: Navigation



Figure 21: Misc.

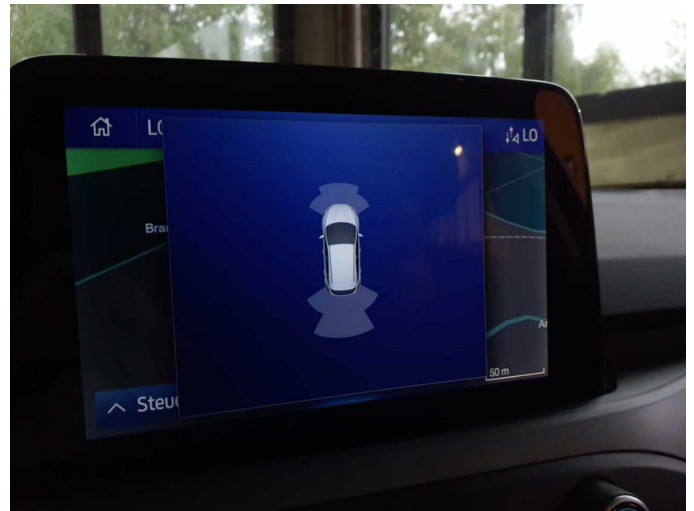


Figure 22: Misc.



Figure 23: Misc.



Figure 24: Misc.



Figure 25: Misc.



Figure 26: Misc.



Damage 1: 2nd wheel set: 2 wheel covers - Scratched - Replace



Damage 1: 2nd wheel set: 2 wheel covers - Scratched - Replace



Damage 1: 2nd wheel set: 2 wheel covers - Scratched - Replace



Damage 1: 2nd wheel set: 2 wheel covers - Scratched - Replace



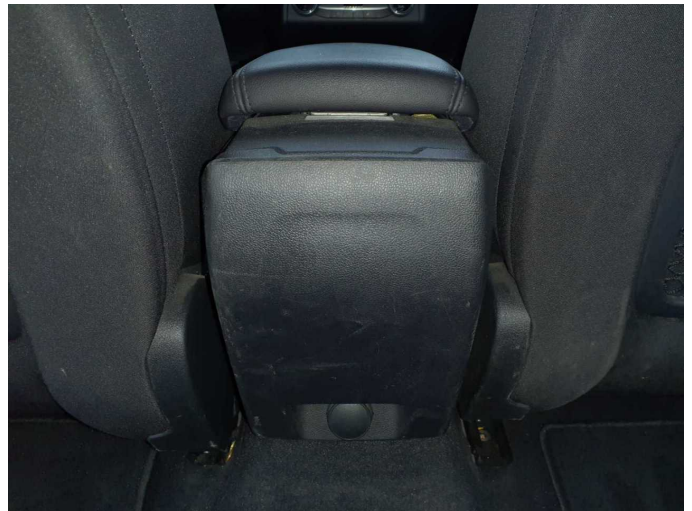
Damage 1: 2nd wheel set: 2 wheel covers - Scratched - Replace



Damage 1: 2nd wheel set: 2 wheel covers - Scratched - Replace



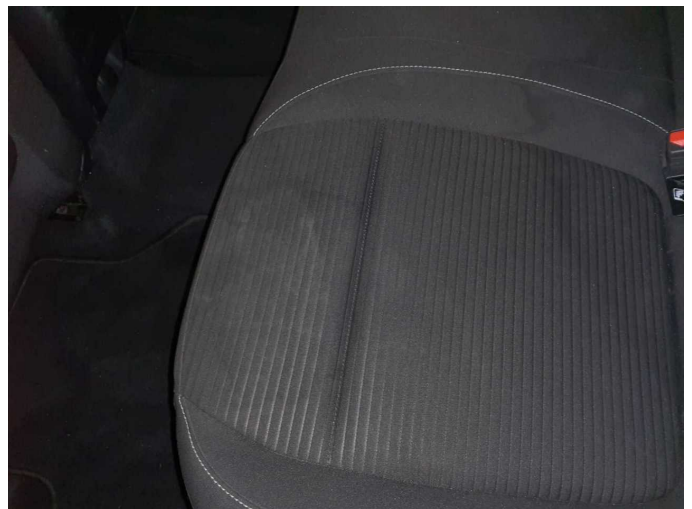
Damage 1: 2nd wheel set: 2 wheel covers - Scratched - Replace



Damage 2: Instrument panel: Centre console - rear - Scratch(es) - Loss in value



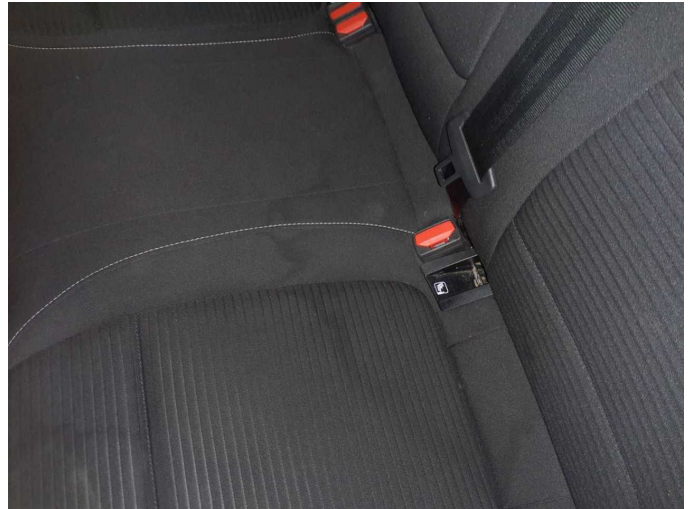
Damage 2: Instrument panel: Centre console - rear - Scratch(es) - Loss in value



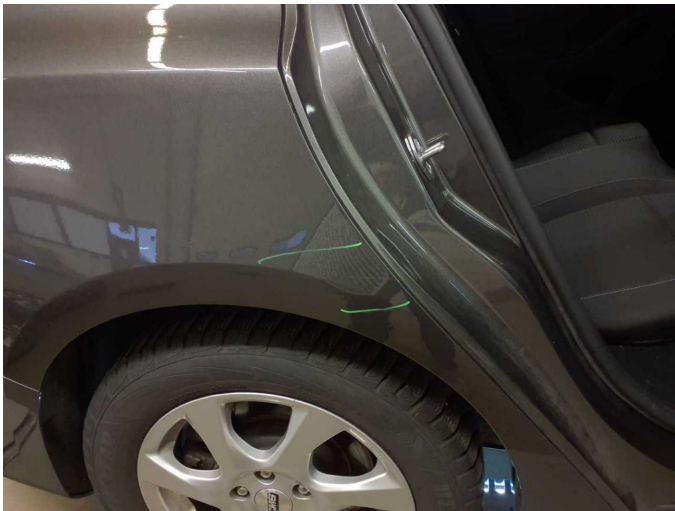
Damage 3: Seat - rear: Upholstery - Soiled - Conditioning



Damage 3: Seat - rear: Upholstery - Soiled - Conditioning



Damage 3: Seat - rear: Upholstery - Soiled - Conditioning



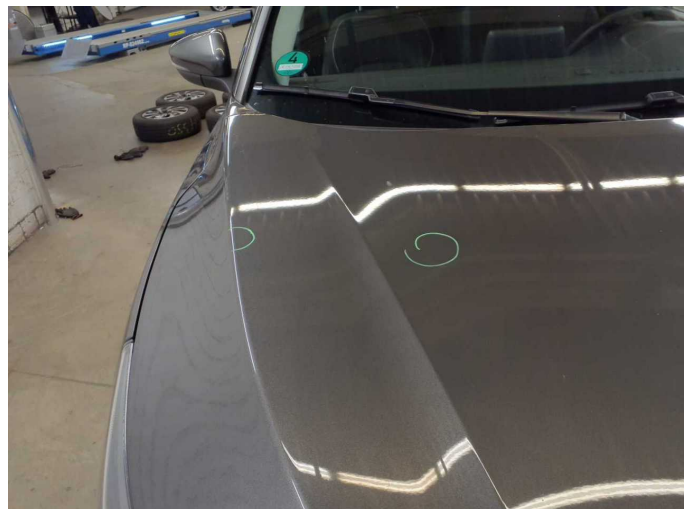
Damage 4: Side panel - rear right side: Side panel - Scratch(es) - Smart repair



Damage 4: Side panel - rear right side: Side panel - Scratch(es) - Smart repair



Damage 4: Side panel - rear right side: Side panel - Scratch(es) - Smart repair



Damage 5: Bonnet: Bonnet - dent(s) - Smooth repair work



Damage 5: Bonnet: Bonnet - dent(s) - Smooth repair work



Damage 5: Bonnet: Bonnet - dent(s) - Smooth repair work



Damage 6: Boot lid / rear door: Boot lid - dent(s) - Smooth repair work



Damage 6: Boot lid / rear door: Boot lid - dent(s) - Smooth repair work



Damage 6: Boot lid / rear door: Boot lid - dent(s) - Smooth repair work



Wartungshistorie

(gemäß Auftraggeber Informationen)

Fahrgestellnummer: WF0PXXGCHPNT51074

Hersteller / Modell: FORD FORD Focus Turnier 1.5 EcoBlue Start-Stopp-System Aut.
TITANIUM STYLE

Datum	KM-Stand	Beschreibung
13.08.2025	124.444	HU + AU
14.07.2025	120.747	Bremse Sonstiges; Bremsklötze hinten; Bremsklötze vorne; Bremsscheiben + Klötze v; Bremsscheiben vorne; Kraftstofffilter ern; Luftfiltereinsatz ern; Motoröl b. Wartung; Ölfilter ern; Regelwartungsdienst; Wartung Sonstiges
17.02.2025	97.282	Reparatur Sonstiges; Systemtest/Eigendiagnose
06.09.2024	87.666	Motoröl b. Wartung; Ölfilter ern; Regelwartungsdienst; Wartung Sonstiges
12.04.2024	62.883	Bremsflüssigkeit; Bremsflüssigkeit ern; Kraftstofffilter ern; Luftfiltereinsatz ern; Motoröl b. Wartung; Ölfilter ern; Regelwartungsdienst; Wartung Sonstiges
05.07.2023	31.612	Motoröl b. Wartung; Ölfilter ern; Regelwartungsdienst; Wartung Sonstiges