



Expertise

Protocol number: 41607676  
Order No. / Reference: 25212548  
Inspection date: 17 Sept 2025

Manufacturer: Ford	Model: Focus Turnier 1.5 EcoBlue Start-Stopp-System Aut. COOL&CONNECT
VIN: WF0PXXGCHPNM80135	



Vehicle details	
<b>Manufacturer / Type / Model / Equipment</b>	
Ford Focus Turnier 1.5 EcoBlue Start-Stopp-System Aut. COOL&CONNECT	
<b>Vehicle Identification number</b>	WF0PXXGCHPNM80135
<b>Mileage (Read)</b>	75,299 km
<b>First registration</b>	10 Aug 2022
<b>Number of holders</b>	1
<b>Next periodical technical inspection</b>	08/2025 (Report not on hand)
<b>Power / Engine displacement</b>	88 kw / 1,499 ccm
<b>Fuel type / Cylinder</b>	Diesel / 4
<b>Gearbox / Number of gears</b>	Automatic / 8
<b>Type of drive</b>	Front drive
<b>Type of vehicle</b>	Station wagon
<b>Colour / colour code</b>	Agate Black Metallic
<b>Doors / Seats</b>	5 / 5
<b>Upholstery type</b>	Cloth
<b>Colour of upholstery</b>	Anthracite-Black
<b>Re/Import</b>	no
<b>Vehicle with smoke odor</b>	Yes (not ozone treated)
<b>Driving readiness</b>	Roadworthy



## Vehicle details

<b>Maintenance booklet / proof</b>	digital proof / complete	<b>Next maintenance in</b>	48 %
<b>Last maintenance on / at</b>	02/2025 at 59,635 km		
<b>Key is / should be</b>	2 / 2	<b>FZG documents</b>	ZB#2 (B) was available (copy), ZB#1 (S) was not available
		<b>Letter No.</b>	GP430429
<b>Previous damage / Accident</b>	None detectable	<b>Repainting</b>	None detectable
<b>Inspection conditions</b>	sufficient	<b>Lifting equipment / pit</b>	yes
<b>Test drive</b>	short drive on the company premises	<b>Engine function test</b>	Performed
<b>Driving readiness</b>	Roadworthy		
<b>Manufacturer key number/ type code number</b>	8566 / BPV 00636		
<b>Emission standard</b>	EURO6;WLTP;AP;PI/CI; M, N1 I	<b>Fine dust sticker</b>	
<b>Permitted total weight</b>	2,035 kg	<b>Empty weight</b>	

## Tyres

### Mounted tyres

#	Tyre size	Type of tyre	Manufacturer	Tread depth
1)	205/60 R16 92V	Summer tyres on Steel rim with wheel cover	Goodyear	4mm / 4mm
2)	205/60 R16 92V	Summer tyres on Steel rim with wheel cover	Goodyear	5mm / 5mm

### Additional tyres

#	Tyre size	Type of tyre	Manufacturer	Tread depth
1)	205/60 R16 92H	Winter tyres on Light alloy	Goodyear	6mm / 6mm
2)	205/60 R16 92H	Winter tyres on Light alloy	Goodyear	7mm / 8mm

### Replacement

Typ	Tyre size	Type of tyre	Manufacturer	Tread depth
	Tirefit	Expiration date 08/2026		

**Legend:** Tread depth information for tires on the left is in the first place, for tires on the right is in the second place on the axle in the direction of travel

## Equipment

### Standard equipment

- Airbag: Passenger airbag deactivation
- Exterior mirrors in body color, driver and passenger side, electrically adjustable and heated (with integrated indicators)
- Tires: 6.5 J x 16 design wheels (4) with 205/60 R16 tires (in 5-spoke design, in black and silver)
- Roof rails, black
- Diesel particulate filter (DPF)
- Electronic Shifter
- Driver information system with on-board computer, color (10.7 cm screen diagonal)
- Electric front and rear windows (with overall closing function)
- Luggage compartment cover
- Speed limiter (intelligent speed limiter with speed limit display)
- Cruise control system
- Transmission: 8-speed automatic transmission
- Glove compartment, illuminated
- Back window, heater
- Rear window wiper
- Interior lighting with LED technology (front and rear and map reading lights in the front)
- Isofix mounting (including top tether anchor points on the outer seats of the 2nd row)
- Air conditioning, manual
- Headrests 2 front and 3 rear, height adjustable
- LED headlights (LED low beam - LED high beam - LED daytime running lights including integrated LED front indicators - LED cornering light, static, including integrated LED fog light function and maneuvering light)
- Make-up mirrors in driver and passenger sun visors
- MyKey key system (individually programmable second key)
- Parking pilot system front and rear
- Post-Collision Assist (In the event of a severe collision that would, for example, also trigger the airbag and in which the driver could be incapacitated, this system initiates the braking process. This reduces the risk of colliding with other obstacles and road users after the collision. The driver can intervene throughout the entire process and apply the accelerator or brake themselves.)
- Tire repair kit (max. 80 km/h permitted when used)
- Headlight assistant with day/night sensor
- Seats: Passenger seat height adjustable, manual (with adjustable lumbar support)
- Seats: Map grid on driver and passenger seat backrests
- Seats: Rear seat backrest (folding, 60 : 40 split)
- Start-stop system
- Carpet floor mats front
- Anti-lock braking system (ABS) with electronic brake-force distribution (EBD)
- Attachment points behind the 2nd row of seats for mounting the safety net
- Hill start assist
- Woven fabric headliner
- Roof spoiler painted in body color
- tachometer
- Electronic Safety and Stability Program (ESP) (with Emergency Brake Assist (EBA) and Traction Control (TCS))
- Lane Assistant including Lane Keeping Assist
- Parking brake, electronic
- FordPass Connect including eCall, Live Traffic Information (only with navigation) and Wi-Fi hotspot (information about the current status or location of the vehicle as well as control of selected vehicle functions via smartphone with the FordPass app - eCall emergency call system for sending an emergency call in the event of an accident or manual activation - Current traffic information in real time (only in conjunction with navigation system) - Wi-Fi hotspot (up to 4G/LTE7, for up to 10 mobile devices))
- Intelligent safety system (front airbags for driver and front passenger - head-shoulder airbags front and rear - side airbags for driver and front passenger - seatbelt pretensioners and force limiters in the front and on the outer seats of the 2nd row - 3-point seatbelts on all seats, height-adjustable in the front - safety pedals)
- Leather gear knob
- Steering wheel: 3-spoke design (in Sensico leather look)
- Steering column, adjustable (adjustable in height and reach)
- "Premium" front center console (sliding armrest - cup holder - storage compartments - 12-volt and USB port)
- Upholstery: Cloth
- Pre-Collision Assist (FA Forward Alert) - with pedestrian and bicycle detection)
- Radio: Ford SYNC 3 Light with AppLink, 8" touchscreen and DAB/ DAB+ (6 speakers - Android Auto and Apple CarPlay - Bluetooth hands-free system and audio streaming - Steering wheel controls - Voice control via phone - USB port)
- Tire pressure monitoring system (TMPS)
- Electromechanical speed-dependent power steering (EPAS (Electric Power Assisted Steering))
- Seats: Driver's seat height adjustable (with manually adjustable lumbar support)
- Seats: Front sports seats with increased lateral support
- 12 volt socket in the luggage compartment
- Lashing eyes in the luggage compartment
- Electronic immobilizer



- Unfastened seat belt warning system for the 1st and 2nd row of seats

- Central locking with remote control and remote luggage compartment release

### Extra equipment

- Navigation: Ford SYNC 3 with AppLink, 8" touchscreen and DAB/ DAB+ (Ford navigation system with AppLink, 8" touchscreen (20.3 cm screen diagonal) - 6 speakers - Android Auto and Apple CarPlay - Bluetooth hands-free system and audio streaming - Steering wheel controls - Radio player - USB port - Voice control via audio and phone - Acoustic and visual route guidance, dynamic navigation with advanced traffic information system, lane recommendation, and European road map)
- Package: Winter (heated windscreen - heated steering wheel - front seats, individually and variably heated)
- Side windows from 2nd row and rear window, dark tinted
- Safety partition net for luggage compartment

### Brief expert findings

Documents submitted	At the time of the inspection, the registration certificate Part 2 (letter) was available, but the registration certificate Part 1 (certificate) was not. (Copy)
VIN comparison	The vehicle identification number (VIN) was read from the vehicle and its conformity with the submitted documents was verified during the inspection by the undersigned.
Inspection	The inspection conditions were sufficient for the assessment of the vehicle. Lifting equipment and a pit were available for examining the vehicle.
Test drive	A short movement and shunting trip was carried out on the company premises.
Engine function test	An engine test run was performed.
Driving readiness	The vehicle was drivable at the time of inspection.

### Value reducing factors

No.	Component group	Description
1	Engine	Hose turbocharger (Mehrkosten möglich) - Damage caused by marten / rodent - Replace
2	Interior	Interior - Odour - Ozone treatment
3	Side panel - rear right side	Sill - Scratch(es) - Smart repair
4	Side panel - rear left side	Side panel - Scratch(es) - Smart repair
5	Tail light	Tail lamp - right side - Scratched - Replace
6	Boot lid / rear door	Boot lid - Scratch(es) - Paint
7	Rear bumper	Rear bumper - Dent / paintcoat damage - Repair and paint
8	Front bumper	Front bumper - Stone chips - Paint
9	Vehicle glazing	Windscreen - Stone chips - Replace

### Wear and tear

No.	Component group	Description
1	Door - rear right side	Door - Scratch(es) - Cover / polish

The vehicle shows signs of wear commensurate with its age and use.



## Order/Scope of order

The order was placed to prepare a sales report for the vehicle described. This includes the following:

- Description of core relevant information about the vehicle
- Documentation of equipment features  
(*Delivery by third-party service providers*)
- Documentation of damage, defects, missing parts
- Documentation of previous damage, unrepaired previous damage, repainting
- a brief visual or functional inspection of the equipment details if possible.  
(*Functional tests of driver assistance systems are not included in the scope of services!*)
- a photo documentation of the vehicle

## Basis for the order

This product is based on the Alphabet Fuhrpark GmbH guidelines for vehicle returns and valuations. The expert makes the explicit findings in each individual case objectively within the framework of the specified standards based on his or her own expertise.

The vehicle inspection takes place in a disassembled state.

Damage or defects that can only be detected during disassembly/diagnosis work or through advanced knowledge remain within the scope of the prognosis risk. An extended risk exists for concealed defects caused by fraudulent deception and not identifiable by the expert.

Damage or defects resulting from normal use or wear and tear of the vehicle will be accepted according to the applicable standard.

There was no explicit identification or monetary consideration of the expected features within the product.

Features which in their nature and severity slightly exceed normal use but do not constitute unacceptable damage will be documented and identified under signs of use if necessary.

Damage or defects which, according to the underlying standard, can no longer be attributed to normal use or wear and tear are listed in the product under "Depreciating Factors".

Depending on the product specification, a monetary ID can be provided. If this takes place, the costs can be 100% d or pro rata depending on the vehicle's age and mileage.

## Previous damages

Apparently, no repaired previous damage could be found on the vehicle.

## Comments

- Winterradsatz ist kein Bestandteil des Auslieferumfangs.





Figure 1: Diagonal front (left)



Figure 2: Diagonal front (right)



Figure 3: Diagonal rear (left)



Figure 4: Diagonal rear (right)



Figure 5: Interior - front



Figure 6: Interior - rear





Figure 7: Instrument cluster



Figure 8: Instrument panel

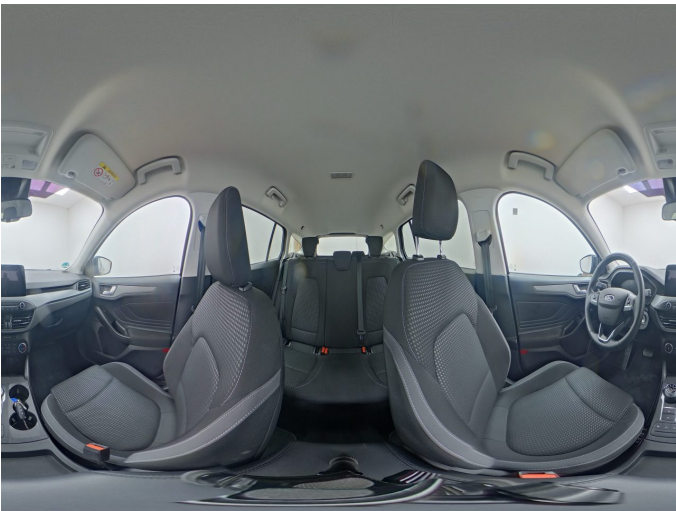


Figure 9: Interior 360° view



Figure 10: Cargo area



Figure 11: VIN



Figure 12: Mounted tyres





Figure 13: Documents



Figure 14: Documents

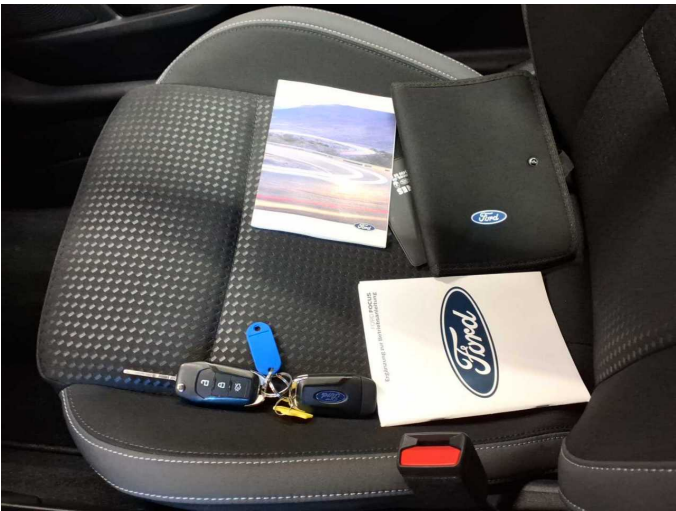


Figure 15: Documents



Figure 16: Additional tyres



Figure 17: Navigation



Figure 18: Misc.





Figure 19: Misc.



Figure 20: Misc.



Figure 21: Misc.



Figure 22: Misc.

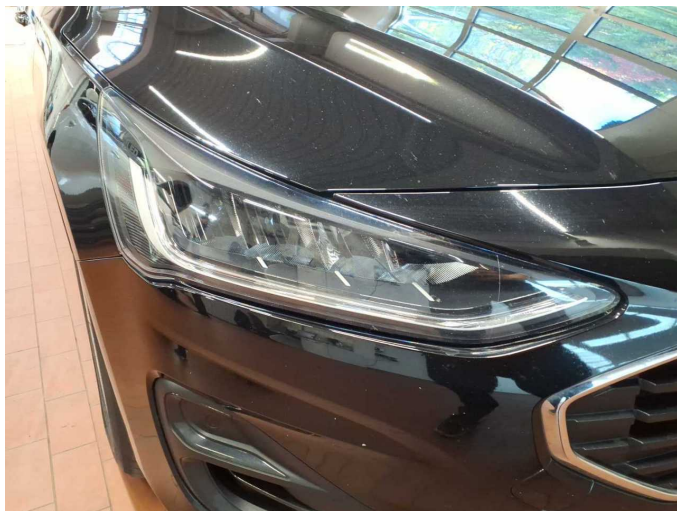


Figure 23: Misc.



Figure 24: Misc.





Figure 25: Misc.



Figure 26: Misc.



Figure 27: Misc.



Figure 28: Misc.



Figure 29: Misc.



Figure 30: Misc.





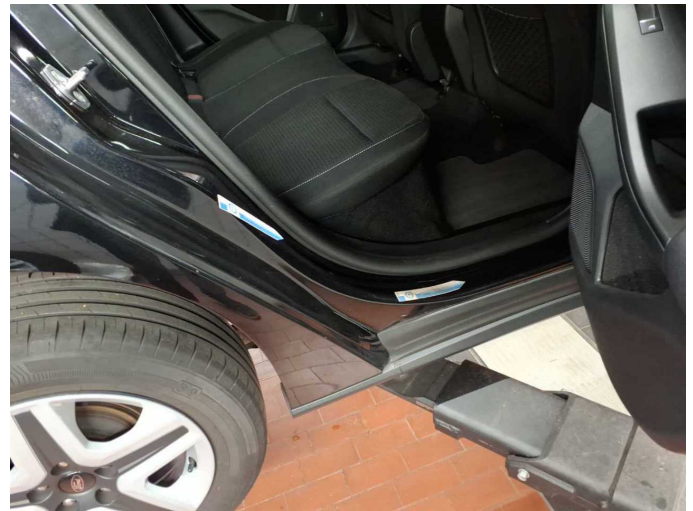
**Damage 1:** Engine: Hose turbocharger (Mehrkosten möglich) - Damage caused by marten / rodent - Replace



**Damage 1:** Engine: Hose turbocharger (Mehrkosten möglich) - Damage caused by marten / rodent - Replace



**Damage 1:** Engine: Hose turbocharger (Mehrkosten möglich) - Damage caused by marten / rodent - Replace



**Damage 3:** Side panel - rear right side: Sill - Scratch(es) - Smart repair



**Damage 3:** Side panel - rear right side: Sill - Scratch(es) - Smart repair



**Damage 3:** Side panel - rear right side: Sill - Scratch(es) - Smart repair





**Damage 4:** Side panel - rear left side: Side panel - Scratch(es) - Smart repair



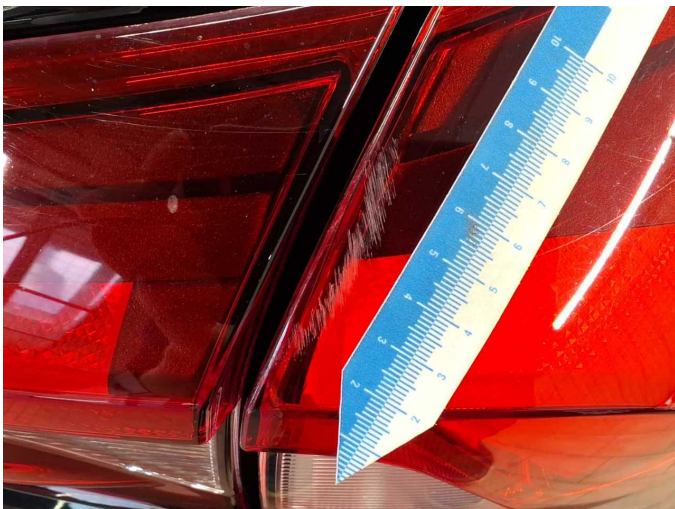
**Damage 4:** Side panel - rear left side: Side panel - Scratch(es) - Smart repair



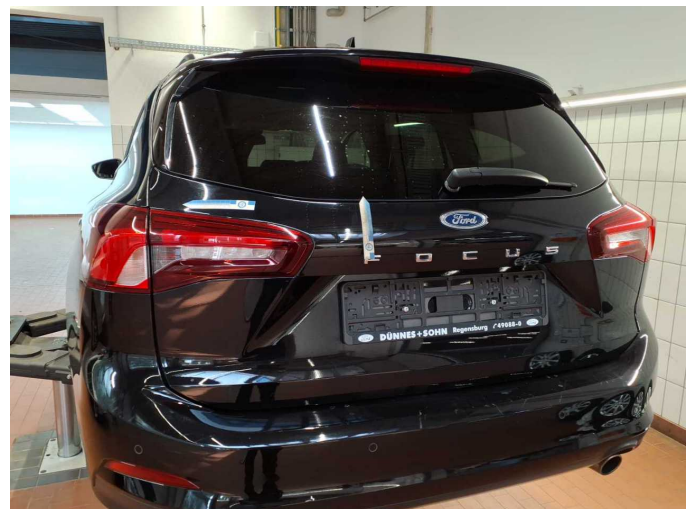
**Damage 4:** Side panel - rear left side: Side panel - Scratch(es) - Smart repair



**Damage 5:** Tail light: Tail lamp - right side - Scratched - Replace

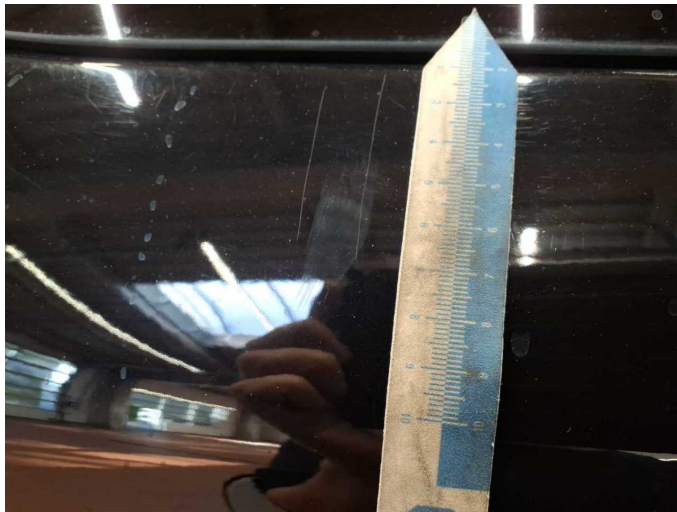


**Damage 5:** Tail light: Tail lamp - right side - Scratched - Replace



**Damage 6:** Boot lid / rear door: Boot lid - Scratch(es) - Paint





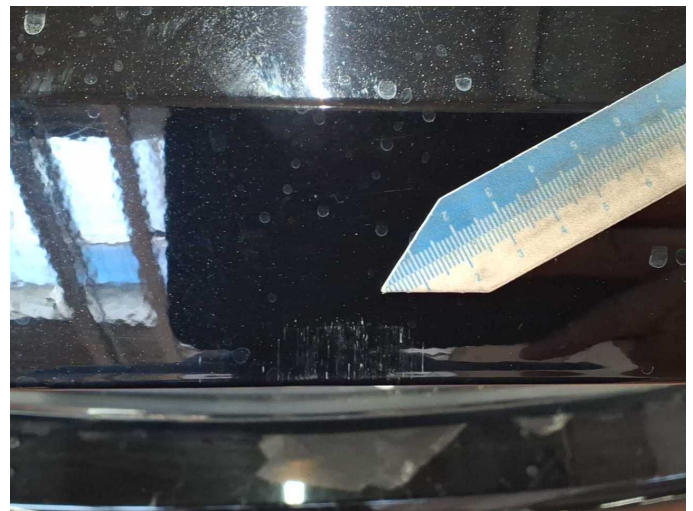
**Damage 6:** Boot lid / rear door: Boot lid - Scratch(es) - Paint



**Damage 6:** Boot lid / rear door: Boot lid - Scratch(es) - Paint



**Damage 6:** Boot lid / rear door: Boot lid - Scratch(es) - Paint



**Damage 6:** Boot lid / rear door: Boot lid - Scratch(es) - Paint



**Damage 7:** Rear bumper: Rear bumper - Dent / paintcoat damage - Repair and paint



**Damage 7:** Rear bumper: Rear bumper - Dent / paintcoat damage - Repair and paint





**Damage 7:** Rear bumper: Rear bumper - Dent / paintcoat damage - Repair and paint



**Damage 7:** Rear bumper: Rear bumper - Dent / paintcoat damage - Repair and paint



**Damage 7:** Rear bumper: Rear bumper - Dent / paintcoat damage - Repair and paint



**Damage 8:** Front bumper: Front bumper - Stone chips - Paint



**Damage 8:** Front bumper: Front bumper - Stone chips - Paint



**Damage 8:** Front bumper: Front bumper - Stone chips - Paint

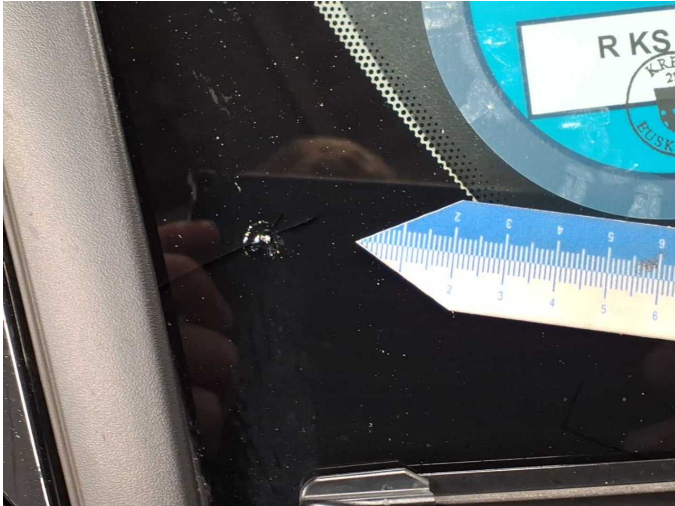




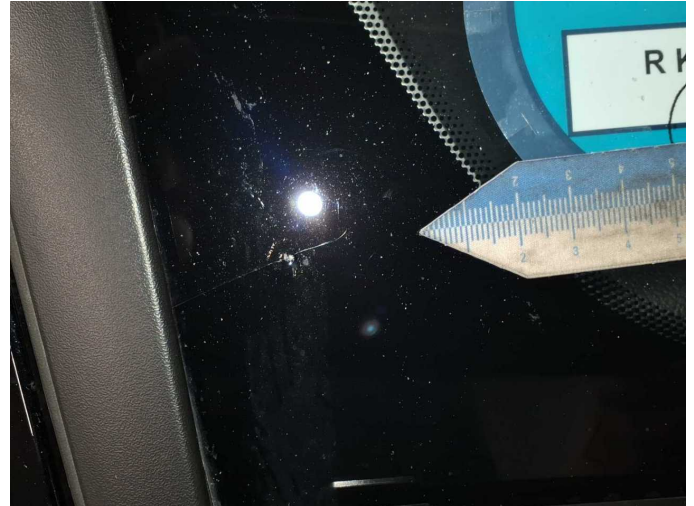
**Damage 8:** Front bumper: Front bumper - Stone chips - Paint



**Damage 9:** Vehicle glazing: Windscreen - Stone chips - Replace



**Damage 9:** Vehicle glazing: Windscreen - Stone chips - Replace



**Damage 9:** Vehicle glazing: Windscreen - Stone chips - Replace



# Wartungshistorie

(gemäß Auftraggeber Informationen)

Fahrgestellnummer: WF0PXXGCHPNM80135

Hersteller / Modell: FORD FORD Focus Turnier 1.5 EcoBlue Start-Stopp-System Aut.  
COOL&CONNECT

Datum	KM-Stand	Beschreibung
10.02.2025	59.635	Kraftstofffilter ern; Luftfiltereinsatz ern; Motoröl b. Wartung; Ölfilter ern; Regelwartungsdienst; Wartung Sonstiges
12.02.2024	29.236	Motoröl b. Wartung; Ölfilter ern; Regelwartungsdienst; Wartung Sonstiges