



Expertise

Protocol number: 41666784
Order No. / Reference: 25212609
Inspection date: 19 Sept 2025

Manufacturer: Ford	Model: Focus Turnier 1.5 EcoBlue Start-Stopp-System Aut. COOL&CONNECT
VIN: WF0PXXGCHPNM80117	



Vehicle details	
Manufacturer / Type / Model / Equipment Ford Focus Turnier 1.5 EcoBlue Start-Stopp-System Aut. COOL&CONNECT	
Vehicle Identification number	WF0PXXGCHPNM80117
Mileage (Read)	92,475 km
First registration	4 Oct 2022
Number of holders	1
Next periodical technical inspection (Report not on hand)	10/2025
Power / Engine displacement	88 kw / 1,499 ccm
Fuel type / Cylinder	Diesel / 4
Gearbox / Number of gears	Automatic / 8
Type of drive	Front drive
Type of vehicle	Station wagon
Colour / colour code	Agate Black Metallic
Doors / Seats	5 / 5
Upholstery type	Cloth
Colour of upholstery	Anthracite-Black
Re/Import	no
Vehicle with smoke odor	no
Driving readiness	Not roadworthy / moveable



Vehicle details

Maintenance booklet / proof	digital proof / complete	Next maintenance in	83 %
Last maintenance on / at	06/2024 at 58,641 km		
Key is / should be	2 / 2	FZG documents	ZB#2 (B) was available (copy), ZB#1 (S) was not available
		Letter No.	GP455703
Previous damage / Accident	Detectable	Repainting	None detectable
Inspection conditions	sufficient	Lifting equipment / pit	yes
Test drive	short drive on the company premises	Engine function test	Performed
Driving readiness	Not roadworthy / moveable		
Manufacturer key number/ type code number	8566 / BPV 00636		
Emission standard	EURO6;WLTP;AP;PI/CI; M, N1 I	Fine dust sticker	
Permitted total weight	2,035 kg	Empty weight	

Tyres

Mounted tyres

#	Tyre size	Type of tyre	Manufacturer	Tread depth
1)	205/60 R16 92H	Winter tyres on Light alloy	Hankook	5mm / 5mm
2)	205/60 R16 92H	Winter tyres on Light alloy	Hankook	6mm / 6mm

Additional tyres

#	Tyre size	Type of tyre	Manufacturer	Tread depth
1)	205/60 R16 96V	Summer tyres on Steel rim with wheel cover	unterschiedliche Hersteller	5mm / 5mm
2)	205/60 R16 96V	Summer tyres on Steel rim with wheel cover	unterschiedliche Hersteller	0mm / 0mm

Replacement

Typ	Tyre size	Type of tyre	Manufacturer	Tread depth
	Tirefit	Expiration date 07/2026		

Legend: Tread depth information for tires on the left is in the first place, for tires on the right is in the second place on the axle in the direction of travel

Equipment

Standard equipment

- Airbag: Passenger airbag deactivation
- Exterior mirrors in body color, driver and passenger side, electrically adjustable and heated (with integrated indicators)
- Tires: 6.5 J x 16 design wheels (4) with 205/60 R16 tires (in 5-spoke design, in black and silver)
- Roof rails, black
- Diesel particulate filter (DPF)
- Electronic Shifter
- Driver information system with on-board computer, color (10.7 cm screen diagonal)
- Electric front and rear windows (with overall closing function)
- Luggage compartment cover
- Speed limiter (intelligent speed limiter with speed limit display)
- Cruise control system
- Transmission: 8-speed automatic transmission
- Glove compartment, illuminated
- Back window, heater
- Rear window wiper
- Interior lighting with LED technology (front and rear and map reading lights in the front)
- Isofix mounting (including top tether anchor points on the outer seats of the 2nd row)
- Air conditioning, manual
- Headrests 2 front and 3 rear, height adjustable
- LED headlights (LED low beam - LED high beam - LED daytime running lights including integrated LED front indicators - LED cornering light, static, including integrated LED fog light function and maneuvering light)
- Make-up mirrors in driver and passenger sun visors
- MyKey key system (individually programmable second key)
- Parking pilot system front and rear
- Post-Collision Assist (In the event of a severe collision that would, for example, also trigger the airbag and in which the driver could be incapacitated, this system initiates the braking process. This reduces the risk of colliding with other obstacles and road users after the collision. The driver can intervene throughout the entire process and apply the accelerator or brake themselves.)
- Tire repair kit (max. 80 km/h permitted when used)
- Headlight assistant with day/night sensor
- Seats: Passenger seat height adjustable, manual (with adjustable lumbar support)
- Seats: Map grid on driver and passenger seat backrests
- Seats: Rear seat backrest (folding, 60 : 40 split)
- Start-stop system
- Carpet floor mats front
- Anti-lock braking system (ABS) with electronic brake-force distribution (EBD)
- Attachment points behind the 2nd row of seats for mounting the safety net
- Hill start assist
- Woven fabric headliner
- Roof spoiler painted in body color
- tachometer
- Electronic Safety and Stability Program (ESP) (with Emergency Brake Assist (EBA) and Traction Control (TCS))
- Lane Assistant including Lane Keeping Assist
- Parking brake, electronic
- FordPass Connect including eCall, Live Traffic Information (only with navigation) and Wi-Fi hotspot (information about the current status or location of the vehicle as well as control of selected vehicle functions via smartphone with the FordPass app - eCall emergency call system for sending an emergency call in the event of an accident or manual activation - Current traffic information in real time (only in conjunction with navigation system) - Wi-Fi hotspot (up to 4G/LTE7, for up to 10 mobile devices))
- Intelligent safety system (front airbags for driver and front passenger - head-shoulder airbags front and rear - side airbags for driver and front passenger - seatbelt pretensioners and force limiters in the front and on the outer seats of the 2nd row - 3-point seatbelts on all seats, height-adjustable in the front - safety pedals)
- Leather gear knob
- Steering wheel: 3-spoke design (in Sensico leather look)
- Steering column, adjustable (adjustable in height and reach)
- "Premium" front center console (sliding armrest - cup holder - storage compartments - 12-volt and USB port)
- Upholstery: Cloth
- Pre-Collision Assist (FA Forward Alert) - with pedestrian and bicycle detection)
- Radio: Ford SYNC 3 Light with AppLink, 8" touchscreen and DAB/ DAB+ (6 speakers - Android Auto and Apple CarPlay - Bluetooth hands-free system and audio streaming - Steering wheel controls - Voice control via phone - USB port)
- Tire pressure monitoring system (TMPS)
- Electromechanical speed-dependent power steering (EPAS (Electric Power Assisted Steering))
- Seats: Driver's seat height adjustable (with manually adjustable lumbar support)
- Seats: Front sports seats with increased lateral support
- 12 volt socket in the luggage compartment
- Lashing eyes in the luggage compartment
- Electronic immobilizer



- Unfastened seat belt warning system for the 1st and 2nd row of seats

- Central locking with remote control and remote luggage compartment release

Extra equipment

- Navigation: Ford SYNC 3 with AppLink, 8" touchscreen and DAB/ DAB+ (Ford navigation system with AppLink, 8" touchscreen (20.3 cm screen diagonal) - 6 speakers - Android Auto and Apple CarPlay - Bluetooth hands-free system and audio streaming - Steering wheel controls - Radio player - USB port - Voice control via audio and phone - Acoustic and visual route guidance, dynamic navigation with advanced traffic information system, lane recommendation, and European road map)
- Package: Winter (heated windscreen - heated steering wheel - front seats, individually and variably heated)
- Side windows from 2nd row and rear window, dark tinted
- Safety partition net for luggage compartment

Brief expert findings

Documents submitted	At the time of the inspection, the registration certificate Part 2 (letter) was available, but the registration certificate Part 1 (certificate) was not. (Copy)
VIN comparison	The vehicle identification number (VIN) was read from the vehicle and its conformity with the submitted documents was verified during the inspection by the undersigned.
Inspection	The inspection conditions were sufficient for the assessment of the vehicle. Lifting equipment and a pit were available for examining the vehicle.
Test drive	A short movement and shunting trip was carried out on the company premises.
Engine function test	An engine test run was performed.
Driving readiness	At the time of inspection, the vehicle was not drivable under its own power, but can be moved on its own axle with the aid of auxiliary equipment.

Value reducing factors

No.	Component group	Description
1	2nd wheel set	1 wheel cover - Scratched - Replace
2	Front bumper	Spoiler - Scratched - Replace
3	Sill - right side	Sill - Scratch(es) - Smart repair
4	Side panel - rear right side	Sill - Scratch(es) - Smart repair
5	Side panel - rear right side	Side panel - Scratch(es) - Smart repair
6	Side panel - rear left side	Sill - Scratch(es) - Smart repair
7	Measurement	Undercarriage - Malposition - Set / adjust
8	Bonnet	Bonnet - dent(s) - Smooth repair work
9	2nd wheel set	2 tyres (Einseitigabgefahren) - Worn - Replace
10	Rear bumper	Rear bumper - Scratch(es) - Paint
11	Boot lid / rear door	Boot lid - Scratch(es) - Paint
12	Door - rear right side	Door - Scratch(es) - Paint
13	Front bumper	Front bumper - Stone chips - Paint

Wear and tear

No.	Component group	Description
1	Wheel / tyres	Tyre - front right side - Damaged - No deduction
2	Door - front left side	Door - Scratch(es) - No deduction

The vehicle shows signs of wear commensurate with its age and use.



Accident damages

No. Accident

1 Side - left

Order/Scope of order

The order was placed to prepare a sales report for the vehicle described. This includes the following:

- Description of core relevant information about the vehicle
- Documentation of equipment features
(Delivery by third-party service providers)
- Documentation of damage, defects, missing parts
- Documentation of previous damage, unrepaired previous damage, repainting
- a brief visual or functional inspection of the equipment details if possible.
(Functional tests of driver assistance systems are not included in the scope of services!)
- a photo documentation of the vehicle

Basis for the order

This product is based on the Alphabet Fuhrpark GmbH guidelines for vehicle returns and valuations. The expert makes the explicit findings in each individual case objectively within the framework of the specified standards based on his or her own expertise.

The vehicle inspection takes place in a disassembled state.

Damage or defects that can only be detected during disassembly/diagnosis work or through advanced knowledge remain within the scope of the prognosis risk. An extended risk exists for concealed defects caused by fraudulent deception and not identifiable by the expert.

Damage or defects resulting from normal use or wear and tear of the vehicle will be accepted according to the applicable standard.

There was no explicit identification or monetary consideration of the expected features within the product.

Features which in their nature and severity slightly exceed normal use but do not constitute unacceptable damage will be documented and identified under signs of use if necessary.

Damage or defects which, according to the underlying standard, can no longer be attributed to normal use or wear and tear are listed in the product under "Depreciating Factors".

Depending on the product specification, a monetary ID can be provided. If this takes place, the costs can be 100% d or pro rata depending on the vehicle's age and mileage.

Previous damages

Non-repaired previous damages were found at the vehicle. The necessary repair costs are listed in the expert report or if necessary, are listed in detail in a separately enclosed repair cost calculation.

Comments

- Für den montierten Radsatz wurde kein Nachweiß erbracht.

- Winterradsatz ist kein Bestandteil des Auslieferungsumfangs.



Figure 1: Diagonal front (left)



Figure 2: Diagonal front (right)



Figure 3: Diagonal rear (left)



Figure 4: Diagonal rear (right)



Figure 5: Interior - front



Figure 6: Interior - rear



Figure 7: Instrument cluster



Figure 8: Instrument panel



Figure 9: Interior 360° view



Figure 10: Cargo area



Figure 11: VIN



Figure 12: Mounted tyres



Figure 13: Documents



Figure 14: Documents



Figure 15: Documents



Figure 16: Additional tyres

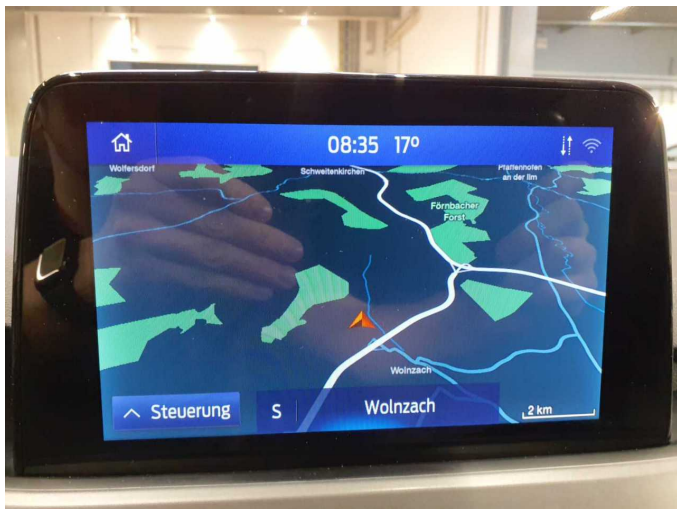


Figure 17: Navigation



Figure 18: Misc.



Figure 19: Misc.



Figure 20: Misc.



Figure 21: Misc.



Figure 22: Misc.



Figure 23: Misc.



Figure 24: Misc.



Figure 25: Misc.



Figure 26: Misc.



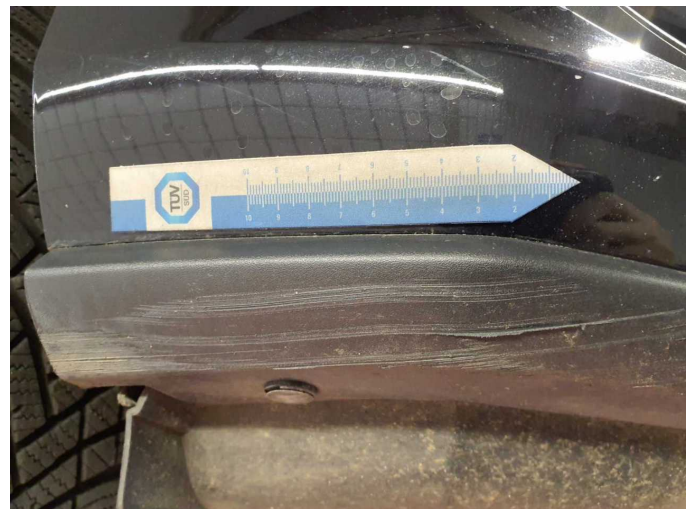
Figure 27: Misc.



Damage 1: 2nd wheel set: 1 wheel cover - Scratched - Replace



Damage 1: 2nd wheel set: 1 wheel cover - Scratched - Replace



Damage 2: Front bumper: Spoiler - Scratched - Replace



Damage 2: Front bumper: Spoiler - Scratched - Replace



Damage 3: Sill - right side: Sill - Scratch(es) - Smart repair



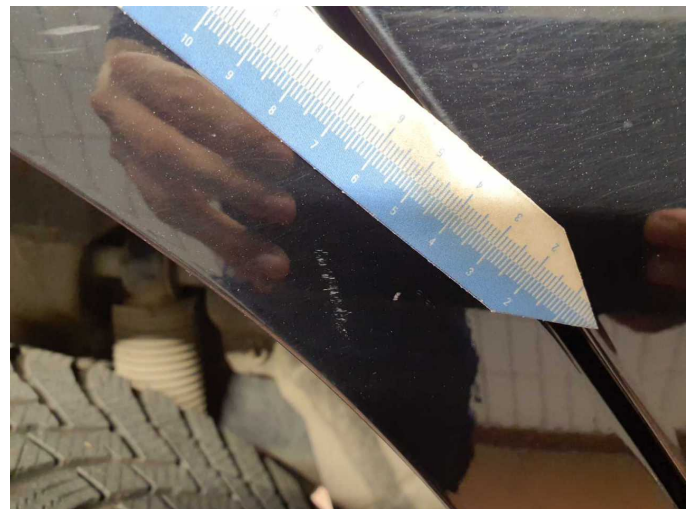
Damage 3: Sill - right side: Sill - Scratch(es) - Smart repair



Damage 4: Side panel - rear right side: Sill - Scratch(es) - Smart repair



Damage 4: Side panel - rear right side: Sill - Scratch(es) - Smart repair



Damage 5: Side panel - rear right side: Side panel - Scratch(es) - Smart repair



Damage 5: Side panel - rear right side: Side panel - Scratch(es) - Smart repair



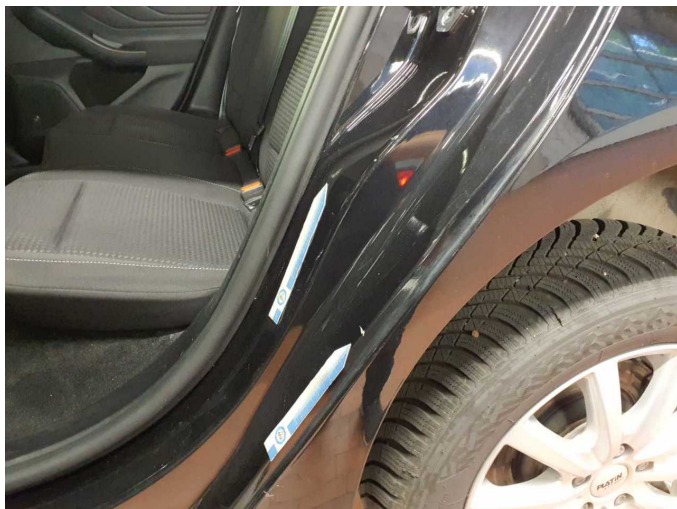
Damage 5: Side panel - rear right side: Side panel - Scratch(es) - Smart repair



Damage 6: Side panel - rear left side: Sill - Scratch(es) - Smart repair



Damage 6: Side panel - rear left side: Sill - Scratch(es) - Smart repair



Damage 6: Side panel - rear left side: Sill - Scratch(es) - Smart repair



Damage 8: Bonnet: Bonnet - dent(s) - Smooth repair work



Damage 8: Bonnet: Bonnet - dent(s) - Smooth repair work



Damage 8: Bonnet: Bonnet - dent(s) - Smooth repair work



Damage 9: 2nd wheel set: 2 tyres (Einseitigabgefahren) - Worn - Replace



Damage 9: 2nd wheel set: 2 tyres (Einseitigabgefahren) - Worn - Replace



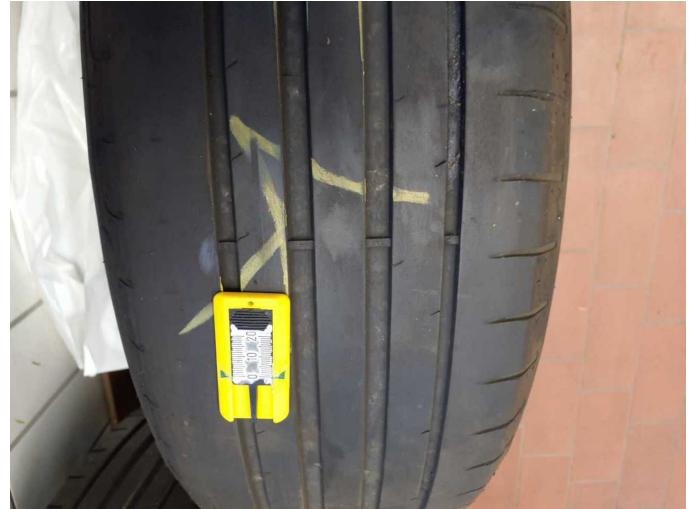
Damage 9: 2nd wheel set: 2 tyres (Einseitigabgefahren) - Worn - Replace



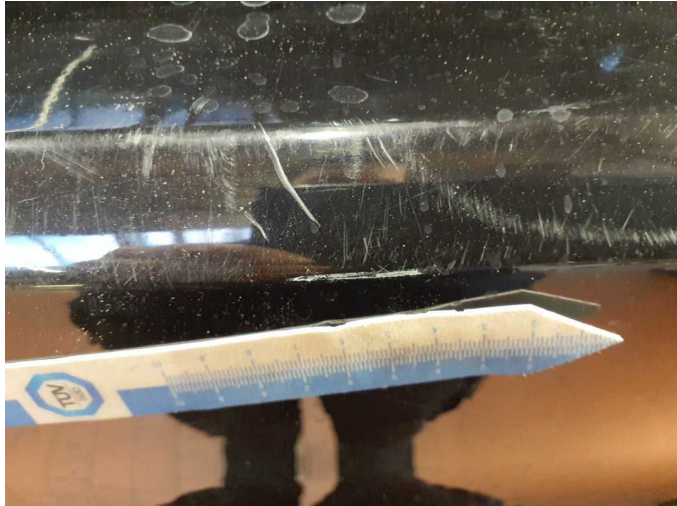
Damage 9: 2nd wheel set: 2 tyres (Einseitigabgefahren) - Worn - Replace



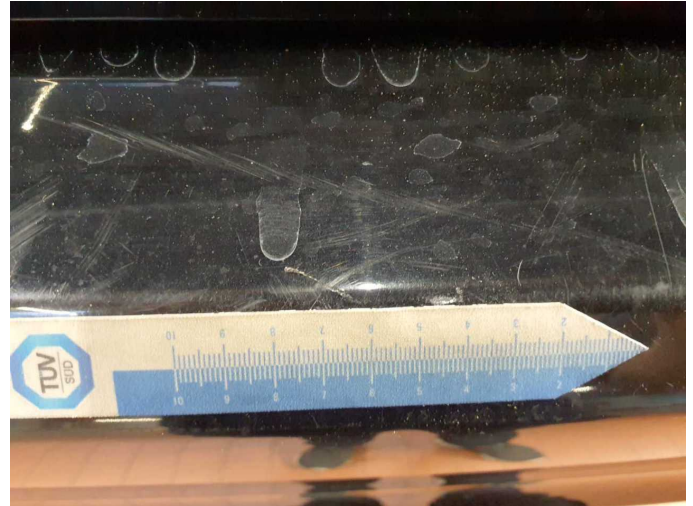
Damage 9: 2nd wheel set: 2 tyres (Einseitigabgefahren) - Worn - Replace



Damage 9: 2nd wheel set: 2 tyres (Einseitigabgefahren) - Worn - Replace



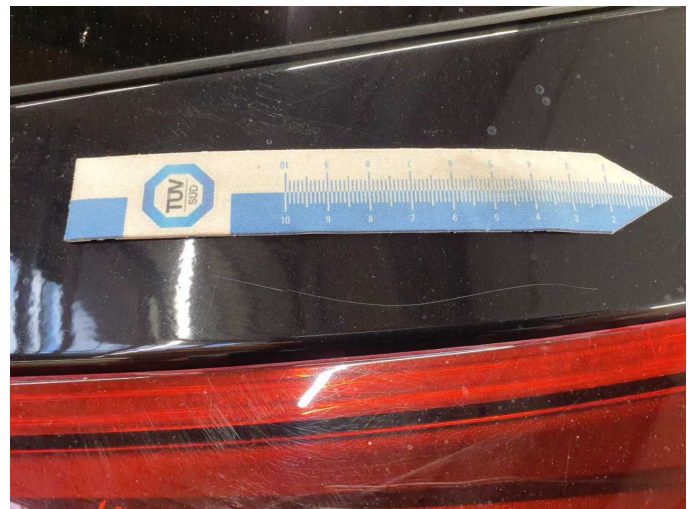
Damage 10: Rear bumper: Rear bumper - Scratch(es) - Paint



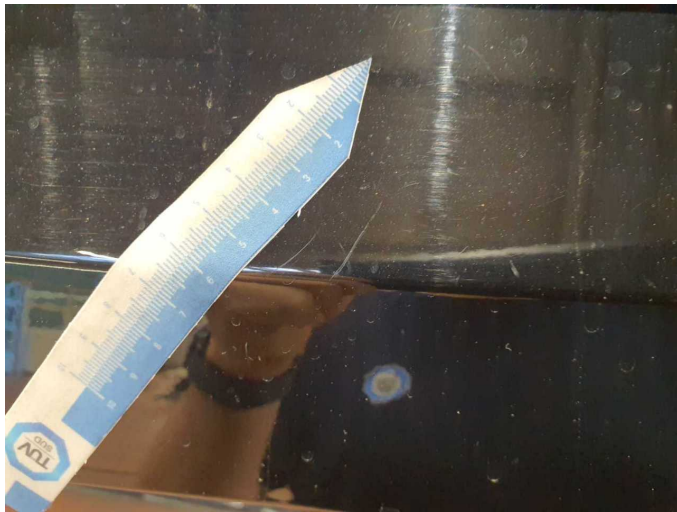
Damage 10: Rear bumper: Rear bumper - Scratch(es) - Paint



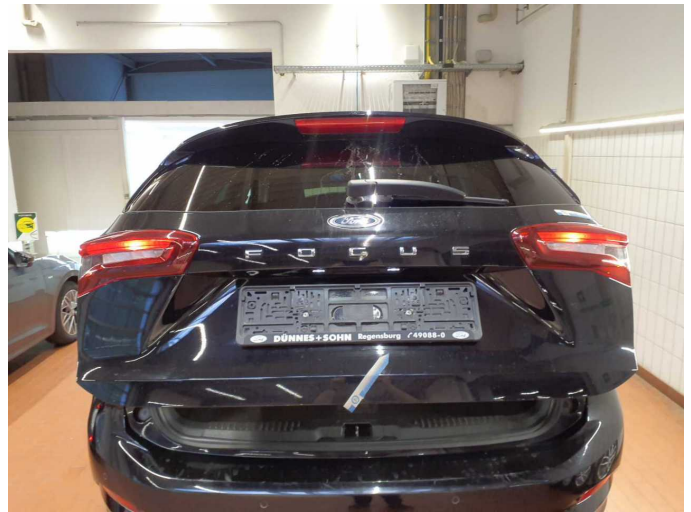
Damage 10: Rear bumper: Rear bumper - Scratch(es) - Paint



Damage 11: Boot lid / rear door: Boot lid - Scratch(es) - Paint



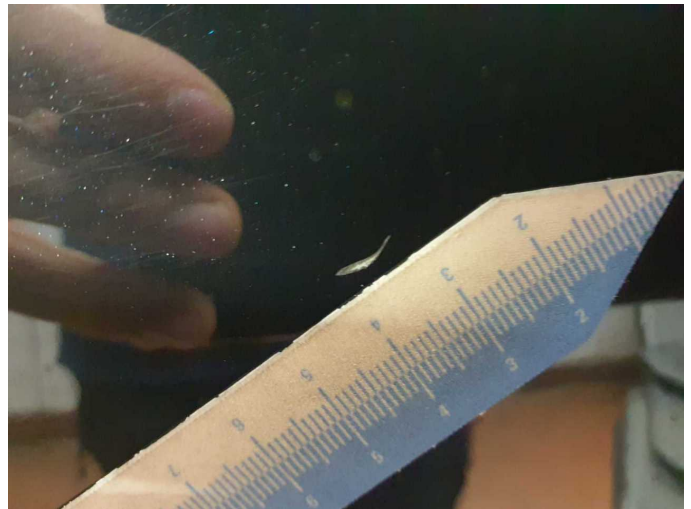
Damage 11: Boot lid / rear door: Boot lid - Scratch(es) - Paint



Damage 11: Boot lid / rear door: Boot lid - Scratch(es) - Paint



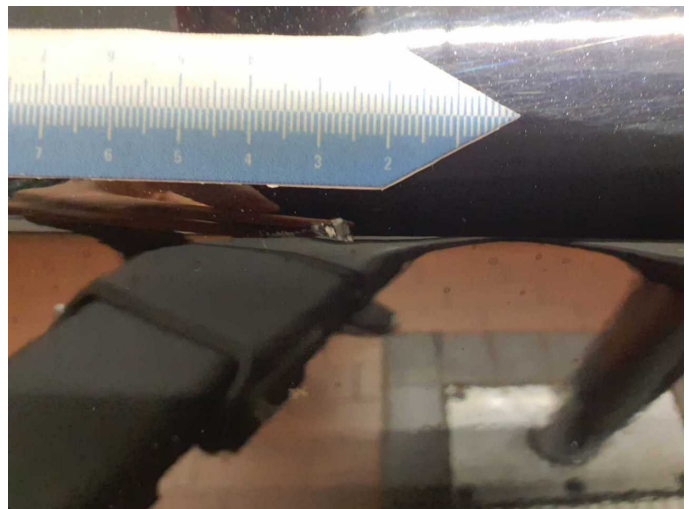
Damage 12: Door - rear right side: Door - Scratch(es) - Paint



Damage 12: Door - rear right side: Door - Scratch(es) - Paint



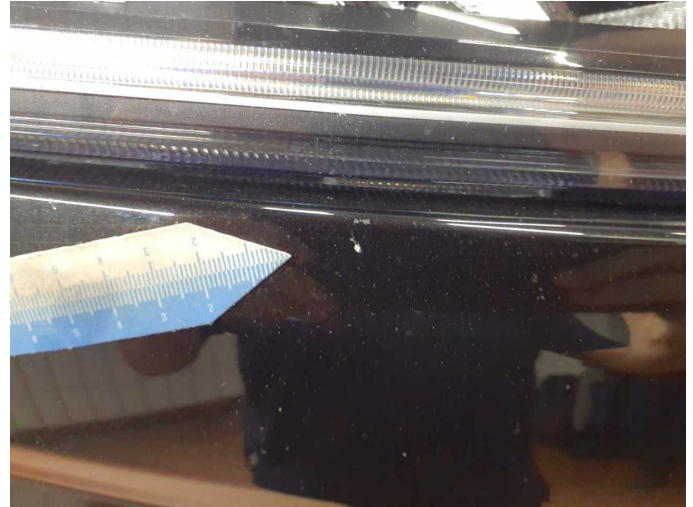
Damage 12: Door - rear right side: Door - Scratch(es) - Paint



Damage 12: Door - rear right side: Door - Scratch(es) - Paint



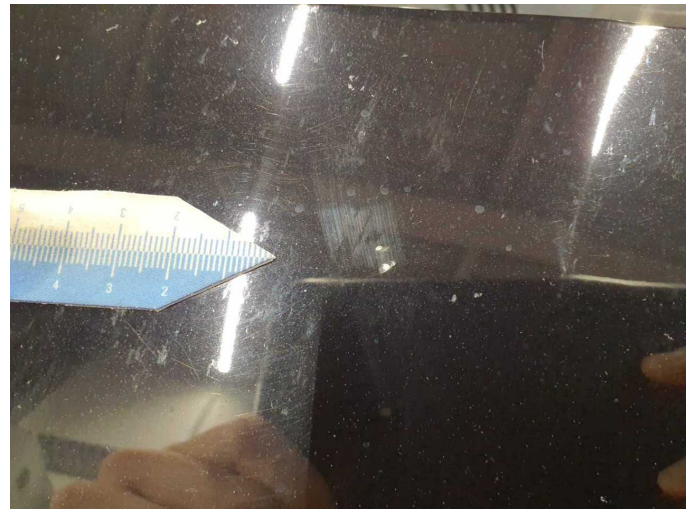
Damage 13: Front bumper: Front bumper - Stone chips - Paint



Damage 13: Front bumper: Front bumper - Stone chips - Paint



Damage 13: Front bumper: Front bumper - Stone chips - Paint



Damage 13: Front bumper: Front bumper - Stone chips - Paint



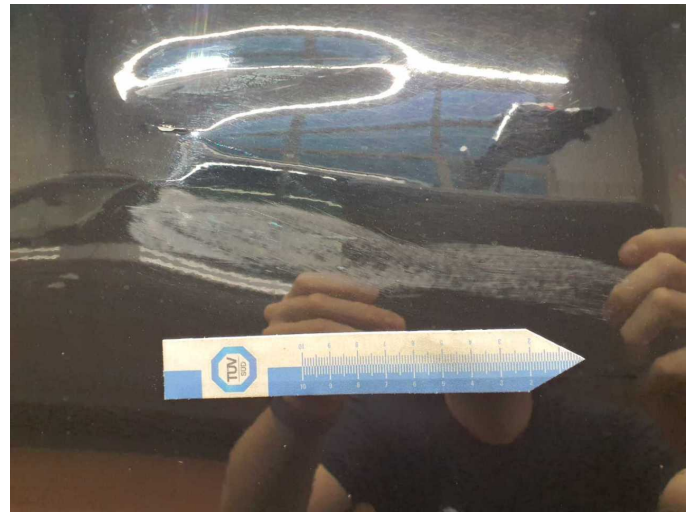
Damage 13: Front bumper: Front bumper - Stone chips - Paint



Damage 13: Front bumper: Front bumper - Stone chips - Paint



Accident 1: Side - left



Accident 1: Side - left



Accident 1: Side - left



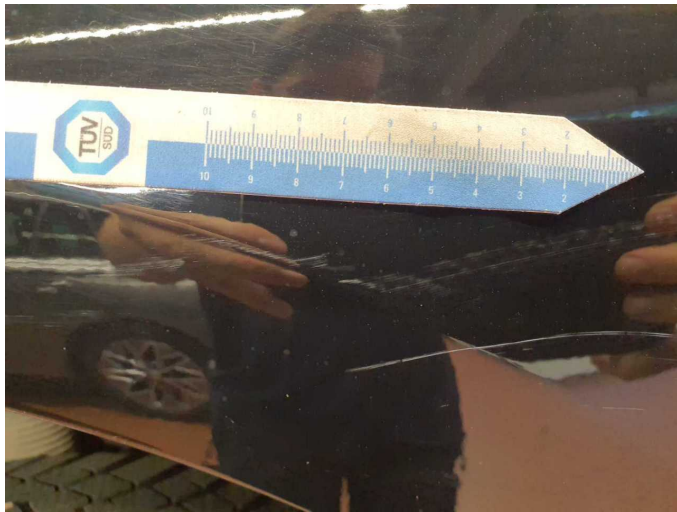
Accident 1: Side - left



Accident 1: Side - left



Accident 1: Side - left



Accident 1: Side - left



Accident 1: Side - left



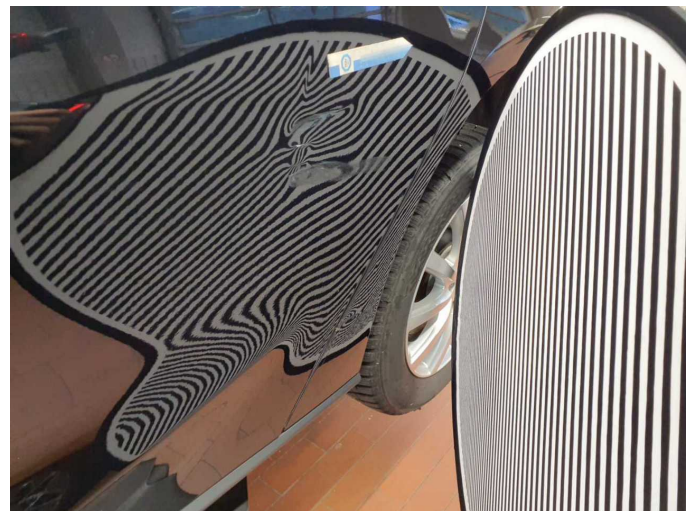
Accident 1: Side - left



Accident 1: Side - left



Accident 1: Side - left



Accident 1: Side - left



Wartungshistorie

(gemäß Auftraggeber Informationen)

Fahrgestellnummer: WF0PXXGCHPNM80117

Hersteller / Modell: FORD FORD Focus Turnier 1.5 EcoBlue Start-Stopp-System Aut.
COOL&CONNECT

Datum	KM-Stand	Beschreibung
28.06.2024	58.641	Bremsflüssigkeit ern; Kraftstofffilter ern; Luftfiltereinsatz ern; Motoröl b. Wartung; Regelwartungsdienst; Systemtest/Eigendiagnose