



Expertise

Protocol number: 41233401
Order No. / Reference: 25069555
Inspection date: 26 Aug 2025

Manufacturer: Ford	Model: Focus Turnier 1.5 EcoBlue Start-Stopp-System Aut. COOL&CONNECT
VIN: WF0PXXGCHPNM79478	



Vehicle details	
Manufacturer / Type / Model / Equipment	
Ford Focus Turnier 1.5 EcoBlue Start-Stopp-System Aut. COOL&CONNECT	
Vehicle Identification number	WF0PXXGCHPNM79478
Mileage (Read)	71,277 km
First registration	8 Aug 2022
Number of holders	1
Power / Engine displacement	88 kw / 1,499 ccm
Fuel type / Cylinder	Diesel / 3
Gearbox / Number of gears	Automatic / 8
Type of drive	Front drive
Type of vehicle	Station wagon
Colour / colour code	Chrome Blue Metallic
Doors / Seats	5 / 5
Upholstery type	Cloth
Colour of upholstery	Black-Anthracite
Vehicle with smoke odor	no



Vehicle details			
Maintenance booklet / proof	digital proof / complete	Next maintenance in	46 %
Last maintenance on / at	08/2024 at 58,343 km		
Key is / should be	2 / 2	FZG documents	ZB#2 (B) was available (copy), ZB#1 (S) was not available
		Letter No.	GP428933
Previous damage / Accident	None detectable	Repainting	None detectable
Inspection conditions	sufficient	Lifting equipment / pit	yes
Test drive	short drive on the company premises	Engine function test	Performed
Manufacturer key number/ type code number	8566 / BPV 00636		
Emission standard	EURO6;WLTP;AP;PI/CI; M, N1 I	Fine dust sticker	
Permitted total weight	2,035 kg	Empty weight	

Tyres				
Mounted tyres				
#	Tyre size	Type of tyre	Manufacturer	Tread depth
1)	205/60 R16 92V	Summer tyres on Steel rim with wheel cover	Goodyear	5mm / 5mm
2)	205/60 R16 92V	Summer tyres on Steel rim with wheel cover	Goodyear	5mm / 5mm
Additional tyres				
#	Tyre size	Type of tyre	Manufacturer	Tread depth
1)	205/60 R16 92T	Winter tyres on Light alloy	Goodyear	6mm / 6mm
2)	205/60 R16 92T	Winter tyres on Light alloy	Goodyear	6mm / 6mm
Replacement				
Typ	Tyre size	Type of tyre	Manufacturer	Tread depth
	Tirefit	Expiration date 07/2026		
Legend: Tread depth information for tires on the left is in the first place, for tires on the right is in the second place on the axle in the direction of travel				

Equipment

Standard equipment

- Airbag: Passenger airbag deactivation
- Exterior mirrors in body color, driver and passenger side, electrically adjustable and heated (with integrated indicators)
- Tires: 6.5 J x 16 design wheels (4) with 205/60 R16 tires (in 5-spoke design, in black and silver)
- Roof rails, black
- Diesel particulate filter (DPF)
- Electronic Shifter
- Driver information system with on-board computer, color (10.7 cm screen diagonal)
- Electric front and rear windows (with overall closing function)
- Luggage compartment cover
- Speed limiter (intelligent speed limiter with speed limit display)
- Cruise control system
- Transmission: 8-speed automatic transmission
- Glove compartment, illuminated
- Back window, heater
- Rear window wiper
- Interior lighting with LED technology (front and rear and map reading lights in the front)
- Isofix mounting (including top tether anchor points on the outer seats of the 2nd row)
- Air conditioning, manual
- Headrests 2 front and 3 rear, height adjustable
- LED headlights (LED low beam - LED high beam - LED daytime running lights including integrated LED front indicators - LED cornering light, static, including integrated LED fog light function and maneuvering light)
- Make-up mirrors in driver and passenger sun visors
- MyKey key system (individually programmable second key)
- Parking pilot system front and rear
- Post-Collision Assist (In the event of a severe collision that would, for example, also trigger the airbag and in which the driver could be incapacitated, this system initiates the braking process. This reduces the risk of colliding with other obstacles and road users after the collision. The driver can intervene throughout the entire process and apply the accelerator or brake themselves.)
- Tire repair kit (max. 80 km/h permitted when used)
- Headlight assistant with day/night sensor
- Seats: Passenger seat height adjustable, manual (with adjustable lumbar support)
- Seats: Map grid on driver and passenger seat backrests
- Seats: Rear seat backrest (folding, 60 : 40 split)
- Start-stop system
- Carpet floor mats front
- Anti-lock braking system (ABS) with electronic brake-force distribution (EBD)
- Attachment points behind the 2nd row of seats for mounting the safety net
- Hill start assist
- Woven fabric headliner
- Roof spoiler painted in body color
- tachometer
- Electronic Safety and Stability Program (ESP) (with Emergency Brake Assist (EBA) and Traction Control (TCS))
- Lane Assistant including Lane Keeping Assist
- Parking brake, electronic
- FordPass Connect including eCall, Live Traffic Information (only with navigation) and Wi-Fi hotspot (information about the current status or location of the vehicle as well as control of selected vehicle functions via smartphone with the FordPass app - eCall emergency call system for sending an emergency call in the event of an accident or manual activation - Current traffic information in real time (only in conjunction with navigation system) - Wi-Fi hotspot (up to 4G/LTE7, for up to 10 mobile devices))
- Intelligent safety system (front airbags for driver and front passenger - head-shoulder airbags front and rear - side airbags for driver and front passenger - seatbelt pretensioners and force limiters in the front and on the outer seats of the 2nd row - 3-point seatbelts on all seats, height-adjustable in the front - safety pedals)
- Leather gear knob
- Steering wheel: 3-spoke design (in Sensico leather look)
- Steering column, adjustable (adjustable in height and reach)
- "Premium" front center console (sliding armrest - cup holder - storage compartments - 12-volt and USB port)
- Upholstery: Cloth
- Pre-Collision Assist (FA Forward Alert) - with pedestrian and bicycle detection)
- Radio: Ford SYNC 3 Light with AppLink, 8" touchscreen and DAB/ DAB+ (6 speakers - Android Auto and Apple CarPlay - Bluetooth hands-free system and audio streaming - Steering wheel controls - Voice control via phone - USB port)
- Tire pressure monitoring system (TMPS)
- Electromechanical speed-dependent power steering (EPAS (Electric Power Assisted Steering))
- Seats: Driver's seat height adjustable (with manually adjustable lumbar support)
- Seats: Front sports seats with increased lateral support
- 12 volt socket in the luggage compartment
- Lashing eyes in the luggage compartment
- Electronic immobilizer



- Unfastened seat belt warning system for the 1st and 2nd row of seats

- Central locking with remote control and remote luggage compartment release

Extra equipment

- Paint finish: metallic
- Package: Winter (heated windscreen - heated steering wheel - front seats, individually and variably heated)
- Side windows from 2nd row and rear window, dark tinted
- Safety partition net for luggage compartment
- Navigation: Ford SYNC 3 with AppLink, 8" touchscreen and DAB/ DAB+ (Ford navigation system with AppLink, 8" touchscreen (20.3 cm screen diagonal) - 6 speakers - Android Auto and Apple CarPlay - Bluetooth hands-free system and audio streaming - Steering wheel controls - Radio player - USB port - Voice control via audio and phone - Acoustic and visual route guidance, dynamic navigation with advanced traffic information system, lane recommendation, and European road map)

Brief expert findings

Documents submitted	At the time of the inspection, the registration certificate Part 2 (letter) was available, but the registration certificate Part 1 (certificate) was not. (Copy)
VIN comparison	The vehicle identification number (VIN) was read from the vehicle and its conformity with the submitted documents was verified during the inspection by the undersigned.
Inspection	The inspection conditions were sufficient for the assessment of the vehicle. Lifting equipment and a pit were available for examining the vehicle.
Test drive	A short maneuvering and shunting trip was carried out on the company premises.
Engine function test	An engine test run was performed.

Value reducing factors

No.	Component group	Description
1	Door - front right side	Door - dent(s) - Smooth repair work
2	Side panel - rear right side	Sill - Scratch(es) - Smart repair
3	Side panel - rear left side	Sill - Scratch(es) - Smart repair
4	Front bumper	Spoiler (Führung gebrochen) - Damaged - Replace
5	Engine	Engine cover - top / cover - Damage caused by marten / rodent - Replace
6	Engine	Hose turbocharger - Damage caused by marten / rodent - Replace
7	Door - rear left side	Door - dent(s) - Smooth repair work
8	Bonnet	Insulation lining - Damage caused by marten / rodent - Replace
9	Door - rear right side	Door - dent(s) - Smart repair
10	Rear bumper	Rear bumper - Scratched - Paint
11	Front bumper	Front bumper - Scratched - Paint
12	Bonnet	Bonnet - Stone chips - Paint

Wear and tear

No.	Component group	Description
1	Vehicle glazing	Windscreen - Stone chips - No deduction
2	Roof	Roof - Stone chips - No deduction
3	Mudguard - left side	Mudguard - left side - Scratch(es) - No deduction
4	Door - front left side	Door (Auslegen/Polieren) - Scratch(es) - No deduction

The vehicle shows signs of wear commensurate with its age and use.



Order/Scope of order

The order was placed to prepare a sales report for the vehicle described. This includes the following:

- Description of core relevant information about the vehicle
- Documentation of equipment features
(Delivery by third-party service providers)
- Documentation of damage, defects, missing parts
- Documentation of previous damage, unrepaired previous damage, repainting
- a brief visual or functional inspection of the equipment details if possible.
(Functional tests of driver assistance systems are not included in the scope of services!)
- a photo documentation of the vehicle

Basis for the order

This product is based on the Alphabet Fuhrpark GmbH guidelines for vehicle returns and valuations. The expert makes the explicit findings in each individual case objectively within the framework of the specified standards based on his or her own expertise.

The vehicle inspection takes place in a disassembled state.

Damage or defects that can only be detected during disassembly/diagnosis work or through advanced knowledge remain within the scope of the prognosis risk. An extended risk exists for concealed defects caused by fraudulent deception and not identifiable by the expert.

Damage or defects resulting from normal use or wear and tear of the vehicle will be accepted according to the applicable standard.

There was no explicit identification or monetary consideration of the expected features within the product.

Features which in their nature and severity slightly exceed normal use but do not constitute unacceptable damage will be documented and identified under signs of use if necessary.

Damage or defects which, according to the underlying standard, can no longer be attributed to normal use or wear and tear are listed in the product under "Depreciating Factors".

Depending on the product specification, a monetary ID can be provided. If this takes place, the costs can be 100% d or pro rata depending on the vehicle's age and mileage.

Previous damages

Apparently, no repaired previous damage could be found on the vehicle.

Comments

- Winterradsatz ist kein Bestandteil des Auslieferumfangs.
- Marderschaden Motor Folgekosten möglich



Figure 1: Diagonal front (left)



Figure 2: Diagonal front (right)



Figure 3: Diagonal rear (left)



Figure 4: Diagonal rear (right)



Figure 5: Interior - front



Figure 6: Interior - rear



Figure 7: Instrument cluster



Figure 8: Instrument panel



Figure 9: interior 360° view



Figure 10: Cargo area



Figure 11: VIN



Figure 12: Mounted tyres



Figure 13: Documents



Figure 14: Documents

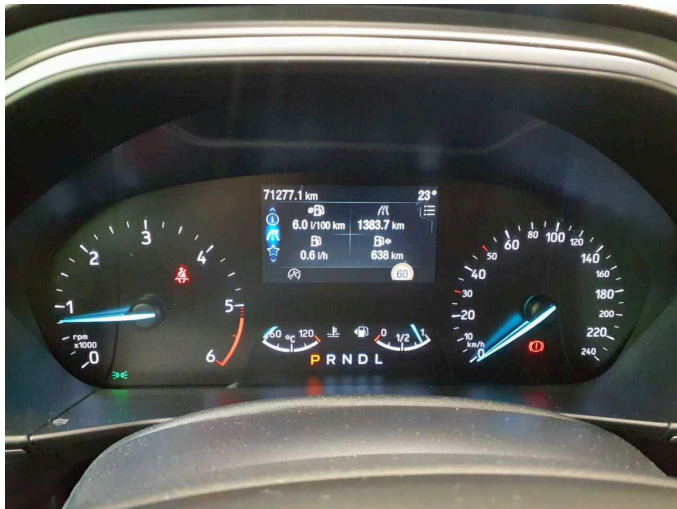


Figure 15: Documents



Figure 16: Additional tyres

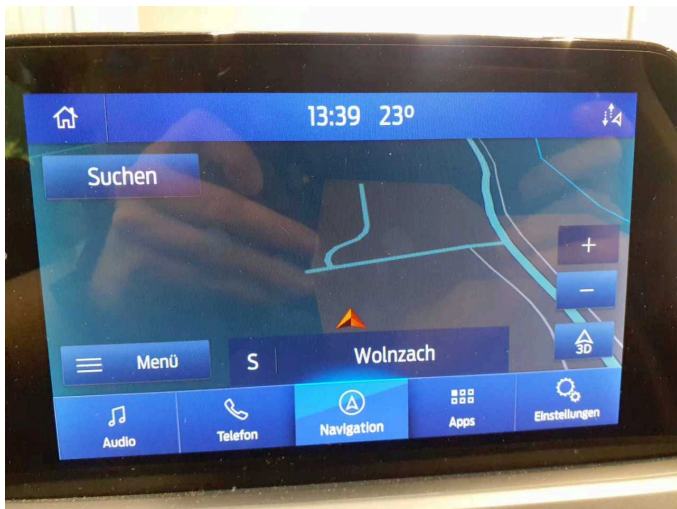


Figure 17: Navigation



Figure 18: Misc.



Figure 19: Misc.



Figure 20: Misc.



Figure 21: Misc.



Figure 22: Misc.



Figure 23: Misc.



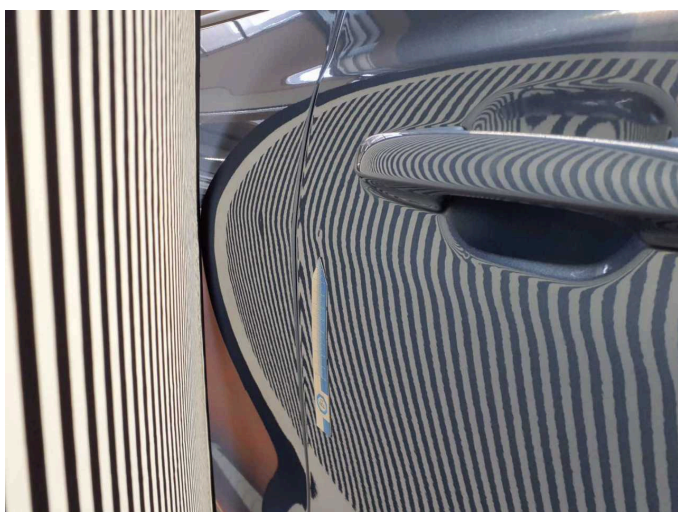
Figure 24: Misc.



Figure 25: Misc.



Figure 26: Misc.



Damage 1: Door - front right side: Door - dent(s) - Smooth repair work



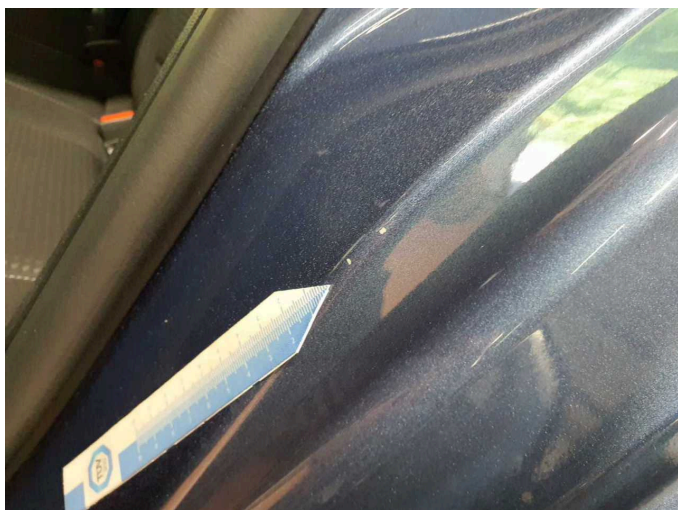
Damage 1: Door - front right side: Door - dent(s) - Smooth repair work



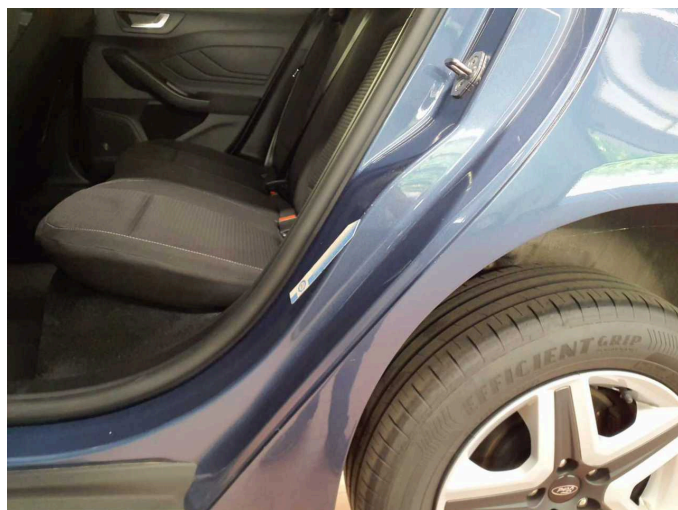
Damage 2: Side panel - rear right side: Sill - Scratch(es) - Smart repair



Damage 2: Side panel - rear right side: Sill - Scratch(es) - Smart repair



Damage 3: Side panel - rear left side: Sill - Scratch(es) - Smart repair



Damage 3: Side panel - rear left side: Sill - Scratch(es) - Smart repair



Damage 4: Front bumper: Spoiler (Führung gebrochen) - Damaged - Replace



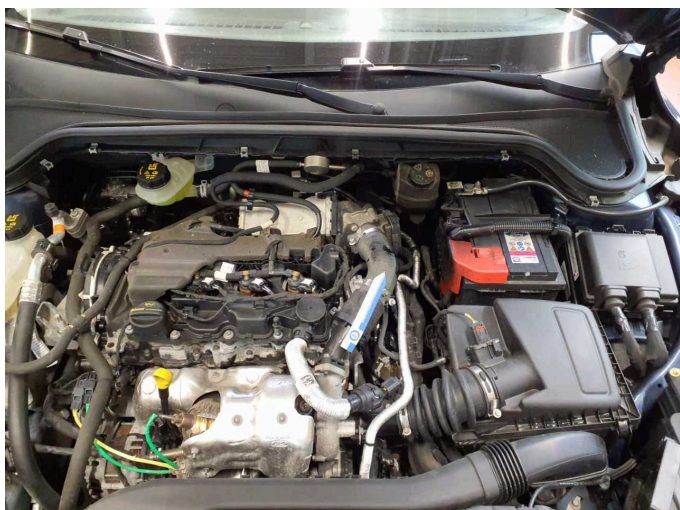
Damage 4: Front bumper: Spoiler (Führung gebrochen) - Damaged - Replace



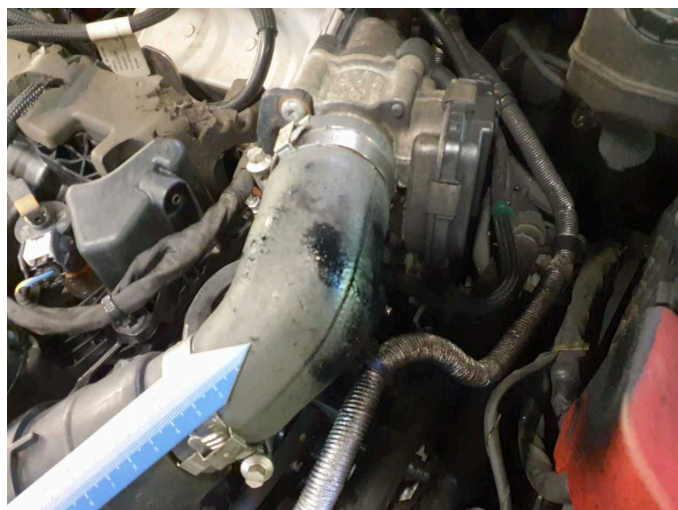
Damage 4: Front bumper: Spoiler (Führung gebrochen) - Damaged - Replace



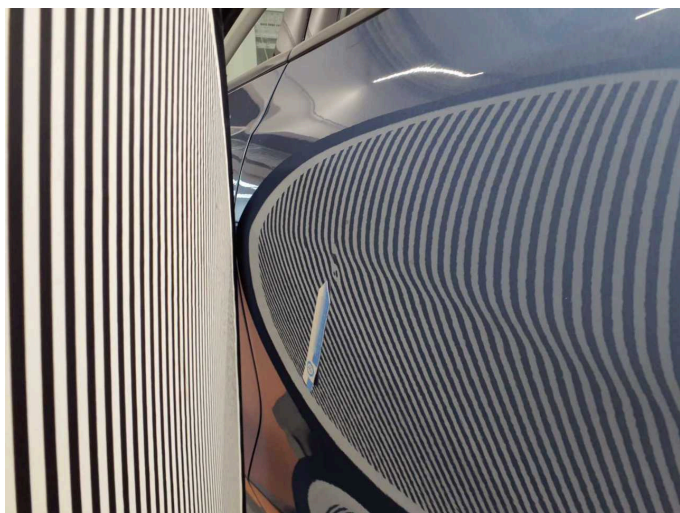
Damage 5: Engine: Engine cover - top / cover - Damage caused by marten / rodent - Replace



Damage 5: Engine: Engine cover - top / cover - Damage caused by marten / rodent - Replace



Damage 6: Engine: Hose turbocharger - Damage caused by marten / rodent - Replace



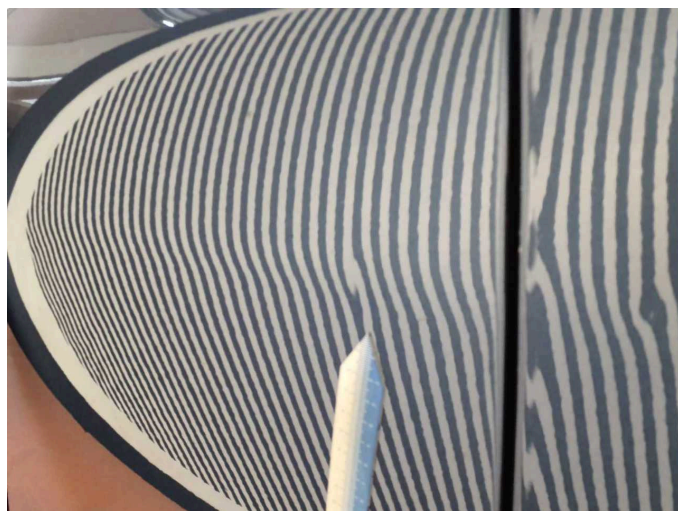
Damage 7: Door - rear left side: Door - dent(s) - Smooth repair work



Damage 7: Door - rear left side: Door - dent(s) - Smooth repair work



Damage 8: Bonnet: Insulation lining - Damage caused by marten / rodent - Replace



Damage 9: Door - rear right side: Door - dent(s) - Smart repair



Damage 9: Door - rear right side: Door - dent(s) - Smart repair



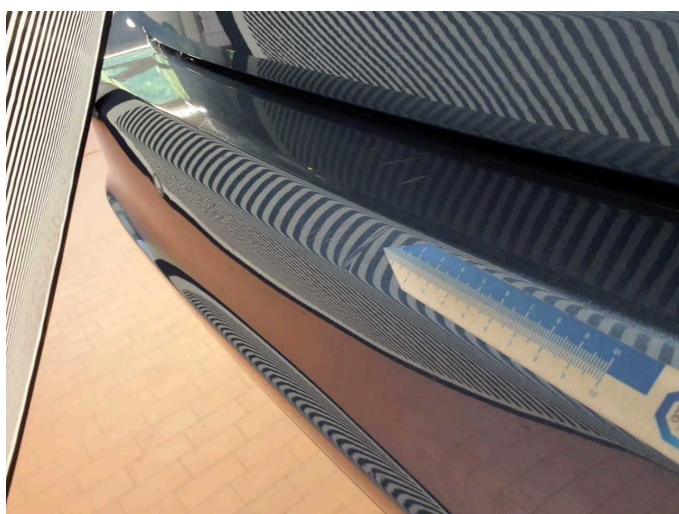
Damage 9: Door - rear right side: Door - dent(s) - Smart repair



Damage 10: Rear bumper: Rear bumper - Scratched - Paint



Damage 10: Rear bumper: Rear bumper - Scratched - Paint



Damage 10: Rear bumper: Rear bumper - Scratched - Paint



Damage 11: Front bumper: Front bumper - Scratched - Paint



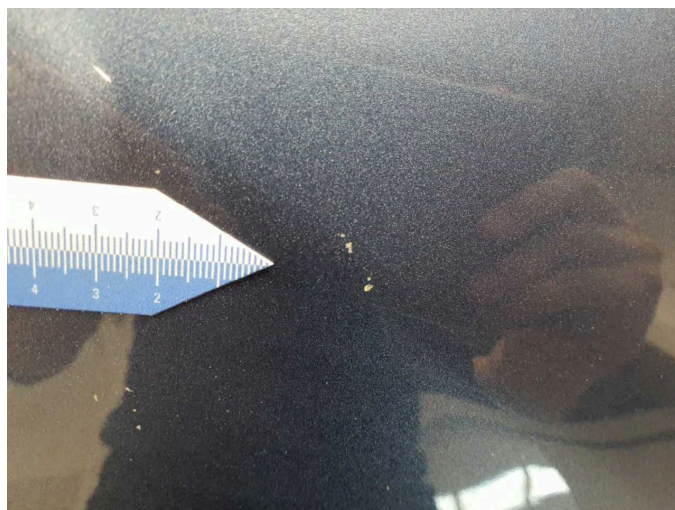
Damage 11: Front bumper: Front bumper - Scratched - Paint



Damage 11: Front bumper: Front bumper - Scratched - Paint



Damage 11: Front bumper: Front bumper - Scratched - Paint



Damage 12: Bonnet: Bonnet - Stone chips - Paint



Damage 12: Bonnet: Bonnet - Stone chips - Paint



Damage 12: Bonnet: Bonnet - Stone chips - Paint



Wartungshistorie

(gemäß Auftraggeber Informationen)

Fahrgestellnummer: WF0PXXGCHPNM79478

Hersteller / Modell: FORD FORD Focus Turnier 1.5 EcoBlue Start-Stopp-System Aut.
COOL&CONNECT

Datum	KM-Stand	Beschreibung
06.08.2024	58.343	Bremse Sonstiges; Bremsflüssigkeit; Bremsflüssigkeit ern; Bremsklötze hinten; Bremsscheiben + Klötze h; Bremsscheiben hinten; Kraftstofffilter ern; Luftfiltereinsatz ern; Motoröl b. Wartung; Ölfilter ern; Regelwartungsdienst; Wartung Sonstiges
15.04.2024	50.424	Bremsklötze vorne; Bremsscheiben + Klötze v; Bremsscheiben vorne
18.08.2023	29.831	Motoröl b. Wartung; Ölfilter ern; Regelwartungsdienst; Wartung Sonstiges