



Expertise

Protocol number: 41774006
Order number / reference: 25245233
Inspection date: 1 Oct 2025

Manufacturer: Ford

Model: Focus Turnier 1.5 EcoBlue Start-Stopp-System TITANIUM
STYLE

VIN: WF0PXXGCHPNB84345



Vehicle details	
Manufacturer / Type / Model / Equipment	
Ford Focus Turnier 1.5 EcoBlue Start-Stopp-System TITANIUM STYLE	
Vehicle Identification number	WF0PXXGCHPNB84345
Mileage (Read)	36,893 km
First registration	13 Feb 2023
Number of holders	2
Power / Engine displacement	88 kw / 1,499 ccm
Fuel type / Cylinder	Diesel / 4
Gearbox / Number of gears	Manual / 6
Type of drive	Front drive
Type of vehicle	Station wagon
Colour / colour code	Frozen White
Doors / Seats	5 / 5
Upholstery type	Cloth
Colour of upholstery	Anthracite-Black



Vehicle details

Maintenance booklet / proof	digital proof / incomplete	Next maintenance in	0 %
Key is / should be	2 / 2	FZG documents	ZB#2 (B) was available (copy), ZB#1 (S) was not available
		Letter No.	GP443729
Previous damage / Accident	None detectable	Repainting	None detectable
Inspection conditions	sufficient	Lifting equipment / pit	yes
Test drive	Not performed	Engine function test	Performed
Manufacturer key number/ type code number	8566 / BPV 00642		
Emission standard	EURO6;WLTP;AP;PI/CI; M, N1 I	Fine dust sticker	
Permitted total weight	1,955 kg	Empty weight	

Tyres

Mounted tyres

#	Tyre size	Type of tyre	Manufacturer	Tread depth
1)	205/60 R16 92V	Summer tyres on Steel rim with wheel cover	Goodyear	6mm / 6mm
2)	205/60 R16 92V	Summer tyres on Steel rim with wheel cover	Goodyear	6mm / 6mm

Additional tyres

#	Tyre size	Type of tyre	Manufacturer	Tread depth
1)	205/60 R16 92H	Winter tyres on Steel rim with wheel cover	Fulda	6mm / 6mm
2)	205/60 R16 92H	Winter tyres on Steel rim with wheel cover	Fulda	6mm / 6mm

Replacement

Typ	Tyre size	Type of tyre	Manufacturer	Tread depth
Tirefit		Expiration date 08/2026		

Legend: Tread depth information for tires on the left is in the first place, for tires on the right is in the second place on the axle in the direction of travel



Equipment

Standard equipment

- Airbag: Passenger airbag deactivation
- Anti-lock braking system (ABS) with electronic brake-force distribution (EBD)
- Tires: 6.5 J x 16 design wheels (4) with 205/60 R16 tires
- Hill start assist
- Roof rails, aluminum
- Diesel particulate filter (DPF)
- Third brake light
- Electronic Safety and Stability Program (ESP)
- Lane Assistant including Lane Keeping Assist
- Electric windows front and rear
- Ford Easy Fuel
- Ford Power start function
- Luggage compartment cover
- Cruise control system
- Glove compartment, illuminated
- Rear window wiper
- Interior mirror automatically dimming
- Isofix mount
- Headrests (5)
- LED taillights
- Steering wheel: 3-spoke design
- Make-up mirrors in driver and passenger sun visors
- Center console "Premium" front
- Navigation: Ford SYNC 3 with AppLink, 8" touchscreen and DAB/DAB+
- Upholstery: Cloth
- Pre-Collision Assist
- Tire pressure monitoring system (TPMS)
- Shift paddles on the steering wheel
- Headlight dipped beam
- Selective driving mode switch
- Seats: Passenger seat height adjustment, manual
- Seats: Driver's seat manually height adjustable
- Start-stop system
- Carpet floor mats front
- Lashing eyes in the luggage compartment
- Immobiliser
- Central locking with remote control and remote luggage compartment release
- Ambient lighting, front
- Electrically folding exterior mirrors
- Attachment points behind the 2nd row of seats for mounting the safety net
- Woven fabric headliner
- Roof spoiler painted in body color
- tachometer
- Electronic Shifter - rotary switch for automatic transmission
- Driver information system with on-board computer, color (10.7 cm screen diagonal)
- Electric parking brake with auto-hold function
- Ford EcoCoach
- FordPass Connect including eCall and Wi-Fi hotspot
- Speed limiter
- Transmission: 6-speed manual transmission
- Back window, heater
- Interior lighting with LED technology
- Intelligent security system
- Air conditioning with automatic temperature control
- Titanium-design grille
- LED headlights
- Steering wheel: Steering column, adjustable in height and reach
- MyKey key system (individually programmable second key)
- Emergency brake light
- Parking pilot system front and rear
- Post-Collision Assist
- Tire repair kit
- Rear seat backrest, foldable, 60:40 split
- Windscreen wipers with rain sensor
- Headlight assistant with day/night sensor
- Power steering electro-mechanical speed-dependent
- Seats: Driver and passenger seat backrests with map grid
- Seats: Driver's seat with adjustable lumbar support
- 12-volt socket in the luggage compartment
- Variable radiator air intake
- Unfastened seat belt warning system for the 1st and 2nd row of seats

Extra equipment



- Paintwork: Uni special paintwork
- Side windows from 2nd row and rear window, dark tinted
- Safety partition net for luggage compartment
- Seats: Ford ergonomic seat (driver and front passenger seats, 18-way adjustable: - Position, height, and angle of the backrest and seat cushion manually adjustable (in conjunction with EcoBoost Hybrid - front passenger seat, 2-way adjustable) - Thigh support, manually extendable - 4-way electrically adjustable lumbar support - 4-way adjustable headrest)
- Seats: Front seats individually and variably heated
- Package: Driver Assistance Package II (Adaptive Cruise Control, Lane Keeping System, Traffic Jam Assist with Stop&Go function, Traffic Sign Recognition System, Evasive Collision Avoidance System (ESA), Distance Indicator and Distance Warning, Fatigue Warning, High Beam Assist, Blind Spot Assist with Cross Traffic Alert including emergency braking function (when reversing out of a parking space) and trailer detection, Rear View Camera with Split View Technology, Electrically Folding Exterior Mirrors with Ambient Lighting)
- Accessories: Winter complete wheels

Brief expert findings

Documents submitted	At the time of the inspection, the registration certificate Part 2 (letter) was available, but the registration certificate Part 1 (certificate) was not. (Copy)
VIN comparison	The vehicle identification number (VIN) was read from the vehicle and its conformity with the submitted documents was verified during the inspection by the undersigned.
Inspection	The inspection conditions were sufficient for the assessment of the vehicle. Lifting equipment and a pit were available for examining the vehicle.
Test drive	No test drive/maneuvering was carried out during the inspection of the vehicle.
Engine function test	An engine test run was performed.

Value reducing factors

No.	Component group	Description
1	Bonnet	Insulation lining - Damage caused by marten / rodent - Replace
2	Engine	Engine cover - Damage caused by marten / rodent - Replace
3	Misc.	Inspection / maintenance - Due - Perform

Missing parts

Description

Interior - Separation net

Order/Scope of order

The order was placed to prepare a sales report for the vehicle described. This includes the following:

- Description of core relevant information about the vehicle
- Documentation of equipment features
(Delivery by third-party service providers)
- Documentation of damage, defects, missing parts
- Documentation of previous damage, unrepaired previous damage, repainting
- a brief visual or functional inspection of the equipment details if possible.
(Functional tests of driver assistance systems are not included in the scope of services!)
- a photo documentation of the vehicle



Basis for the order

This product is based on the Alphabet Fuhrpark GmbH guidelines for vehicle returns and valuations. The expert makes the explicit findings in each individual case objectively within the framework of the specified standards based on his or her own expertise.

The vehicle inspection takes place in a disassembled state.

Damage or defects that can only be detected during disassembly/diagnosis work or through advanced knowledge remain within the scope of the prognosis risk. An extended risk exists for concealed defects caused by fraudulent deception and not identifiable by the expert.

Damage or defects resulting from normal use or wear and tear of the vehicle will be accepted according to the applicable standard.

There was no explicit identification or monetary consideration of the expected features within the product.

Features which in their nature and severity slightly exceed normal use but do not constitute unacceptable damage will be documented and identified under signs of use if necessary.

Damage or defects that can no longer be attributed to normal use or wear and tear according to the underlying standard are listed in the product under value-reducing factors.

Depending on the product specification, a monetary ID can be provided. If this takes place, the costs can be 100% d or pro rata depending on the vehicle's age and mileage.

Previous damages

Apparently, no repaired previous damage could be found on the vehicle.



Figure 1: Diagonal front (left)



Figure 2: Diagonal front (right)



Figure 3: Diagonal rear (left)



Figure 4: Diagonal rear (right)



Figure 5: Interior - front



Figure 6: Interior - rear



Figure 7: Instrument cluster



Figure 8: Instrument panel



Figure 9: Interior 360° view



Figure 10: Cargo area



Figure 11: VIN



Figure 12: Mounted tyres

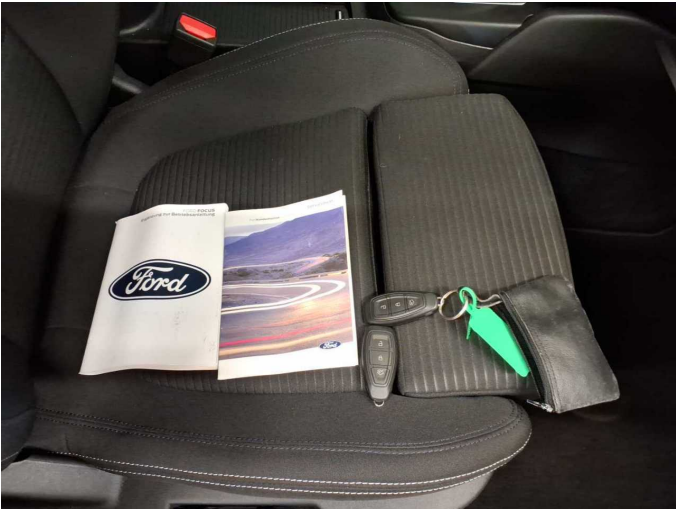


Figure 13: Documents

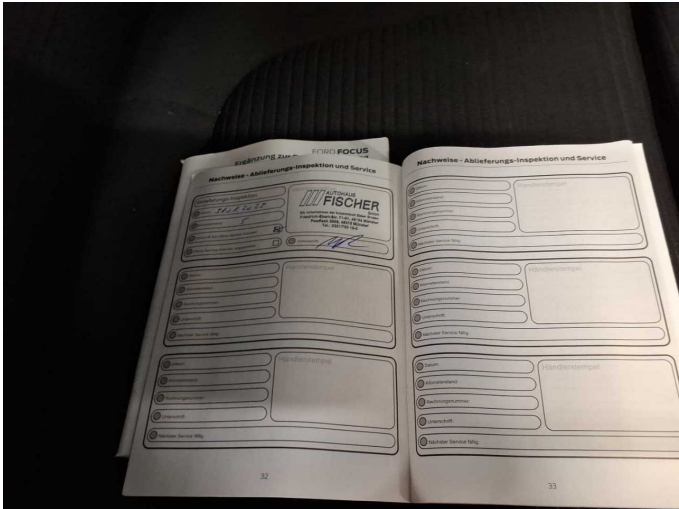


Figure 14: Documents



Figure 15: Documents



Figure 16: Documents



Figure 17: Additional tyres



Figure 18: Additional tyres



Figure 19: Navigation



Figure 20: Misc.



Figure 21: Misc.



Figure 22: Misc.



Figure 23: Misc.



Figure 24: Misc.



Figure 25: Misc.



Figure 26: Misc.



Figure 27: Misc.

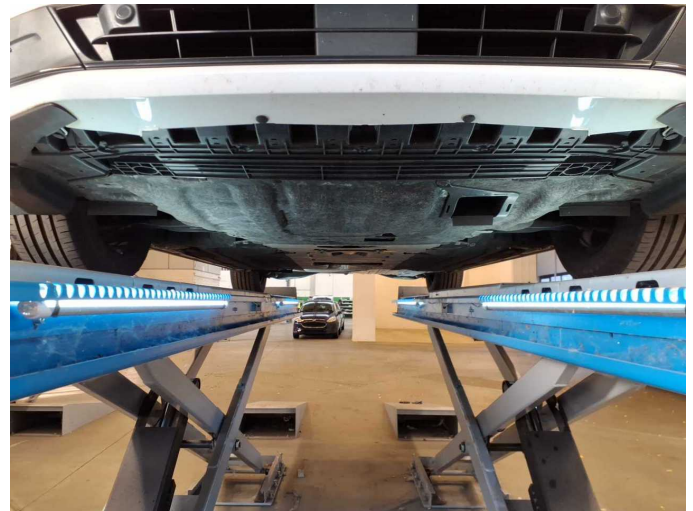
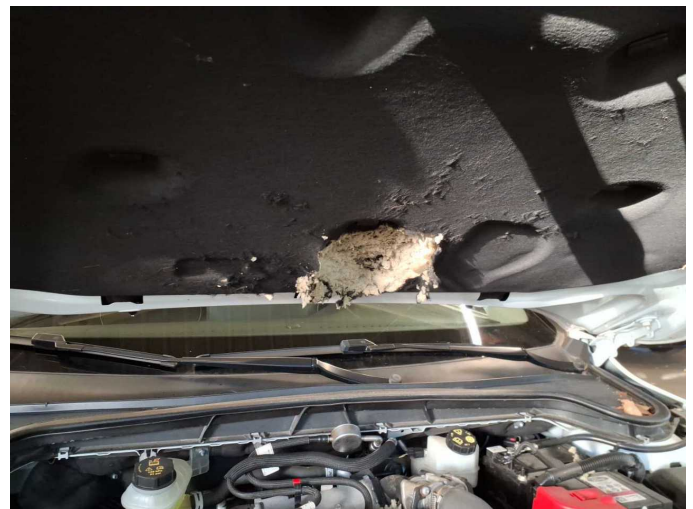


Figure 28: Misc.



Figure 29: Misc.



Damage 1: Bonnet: Insulation lining - Damage caused by marten / rodent
- Replace



Damage 2: Engine: Engine cover - Damage caused by marten / rodent - Replace



Damage 3: Misc.: Inspection / maintenance - Due - Perform



Missing part 1: Interior: Separation net - Missing - Replace