



Expertise

Protocol number: 41172775
Order No. / Reference: 25124946
Inspection date: 21 Aug 2025

| | |
|------------------------|---|
| Manufacturer: Ford | Model: Focus Turnier 1.5 EcoBlue Start-Stopp-System Aut. ACTIVE |
| VIN: WF0PXXGCHPMD11689 | |



| Vehicle details | |
|---|-----------------------|
| Manufacturer / Type / Model / Equipment | |
| Ford Focus Turnier 1.5 EcoBlue Start-Stopp-System Aut. ACTIVE | |
| Vehicle Identification number | WF0PXXGCHPMD11689 |
| Mileage (Read) | 98,223 km |
| First registration | 20 Jan 2022 |
| Number of holders | 1 |
| Power / Engine displacement | 88 kw / 1,499 ccm |
| Fuel type / Cylinder | Diesel / 4 |
| Gearbox / Number of gears | Automatic / 8 |
| Type of drive | Front drive |
| Type of vehicle | Station wagon |
| Colour / colour code | Polar Silber-Metallic |
| Doors / Seats | 5 / 5 |
| Upholstery type | Cloth |
| Colour of upholstery | Black-Grey |



Vehicle details

| | | | |
|--|------------------------------|--------------------------------|---|
| Maintenance booklet / proof | digital proof / complete | Next maintenance in | 76 % |
| Last maintenance on / at | 04/2025 at 91,042 km | | |
| Key is / should be | 2 / 2 | FZG documents | ZB#2 (B) was available (copy), ZB#1 (S) was not available |
| | | Letter No. | GH394888 |
| Previous damage / Accident | None detectable | Repainting | None detectable |
| Inspection conditions | sufficient | Lifting equipment / pit | yes |
| Test drive | Not performed | Engine function test | Performed |
| Manufacturer key number/ type code number | 8566 / BPV 00562 | | |
| Emission standard | EURO6;WLTP;AP;PI/CI; M, N1 I | Fine dust sticker | |
| Permitted total weight | 1,995 kg | Empty weight | |

Tyres

Mounted tyres

| # | Tyre size | Type of tyre | Manufacturer | Tread depth |
|----|----------------|-----------------------------|--------------|-------------|
| 1) | 215/55 R17 98V | Summer tyres on Light alloy | Continental | 4mm / 4mm |
| 2) | 215/55 R17 98V | Summer tyres on Light alloy | Continental | 5mm / 5mm |

Additional tyres

| # | Tyre size | Type of tyre | Manufacturer | Tread depth |
|----|----------------|-----------------------------|--------------|-------------|
| 1) | 215/55 R17 98V | Winter tyres on Light alloy | Dunlop | 7mm / 7mm |
| 2) | 215/55 R17 98V | Winter tyres on Light alloy | Dunlop | 7mm / 7mm |

Replacement

| Typ | Tyre size | Type of tyre | Manufacturer | Tread depth |
|-----|-----------|-------------------------|--------------|-------------|
| | Tirefit | Expiration date 12/2025 | | |

Legend: Tread depth information for tires on the left is in the first place, for tires on the right is in the second place on the axle in the direction of travel



Equipment

Standard equipment

- | | |
|---|---|
| <ul style="list-style-type: none"> • Airbag: Passenger airbag deactivation • Electrically folding exterior mirrors • Exterior mirrors in body color, driver and passenger side, electrically adjustable and heated • Tires: 7 J x 17 alloy wheels (4) with 215/55 R 17 tires • Crossover body kit • Roof rails, black • Diesel particulate filter (DPF) • Electronic Shifter • Driver information system with on-board computer, color (10.7 cm screen diagonal) • Electric windows front and rear • Ford Power start function • Luggage compartment cover • Speed limiter • Transmission: 8-speed automatic transmission • Back window, heater • Interior lighting with LED technology • Intelligent security system • Air conditioning with automatic temperature control • LED taillights • Leather gear knob • Steering column, adjustable • Center console "Premium" front • Navigation: Ford SYNC 4 including Ford navigation system with AppLink, 13.2" touchscreen and DAB/DAB+ • Post-Collision Assist • Tire repair kit • Windscreen wipers with rain sensor (sensitivity adjustable) • Power steering electro-mechanical speed-dependent • Seats: Driver's seat height adjustable • Seats: Rear seat backrest • Start-stop system • Carpet floor mats front • Unfastened seat belt warning system for the 1st and 2nd row of seats | <ul style="list-style-type: none"> • Anti-lock braking system (ABS) with electronic brake-force distribution (EBD) • Attachment points behind the 2nd row of seats for mounting the safety net • Hill start assist • Woven fabric headliner • Roof spoiler painted in body color • tachometer • Electronic Safety and Stability Program (ESP) • Lane Assistant including Lane Keeping Assist • Chassis with increased ground clearance • Parking brake, electronic • FordPass Connect including eCall, Live Traffic Information (only with navigation) and Wi-Fi hotspot • Cruise control system • Glove compartment, illuminated • Rear window wiper • Interior mirror, automatically dimming • Isofix mount • Headrests 2 front and 3 rear, height adjustable • LED headlights • Steering wheel: 3-spoke design • Make-up mirrors in driver and passenger sun visors • MyKey key system (individually programmable second key) • Parking pilot system front and rear • Upholstery: Cloth • Pre-Collision Assist • Tire pressure monitoring system (TPMS) • Headlight assistant with day/night sensor • Seats: Passenger seat height adjustable, manual • Seats: Map grid on driver and passenger seat backrests • Seats: Front sports seats with increased lateral support • 12 volt socket in the luggage compartment • Lashing eyes in the luggage compartment • Electronic immobilizer • Central locking with remote control and remote luggage compartment release |
|---|---|

Extra equipment

- | | |
|---|--|
| <ul style="list-style-type: none"> • Paint finish: metallic • Package: Winter (heated windscreen - heated steering wheel - front seats, individually and variably heated) | <ul style="list-style-type: none"> • Package: Easy Parking Package Plus • Safety partition net for luggage compartment |
|---|--|



Brief expert findings

| | |
|----------------------|--|
| Documents submitted | At the time of the inspection, the registration certificate Part 2 (letter) was available, but the registration certificate Part 1 (certificate) was not. (Copy) |
| VIN comparison | The vehicle identification number (VIN) was read from the vehicle and its conformity with the submitted documents was verified during the inspection by the undersigned. |
| Inspection | The inspection conditions were sufficient for the assessment of the vehicle. Lifting equipment and a pit were available for examining the vehicle. |
| Test drive | No test drive/maneuvering was carried out during the inspection of the vehicle. |
| Engine function test | An engine test run was performed. |

Value reducing factors

| No. | Component group | Description |
|-----|-----------------|---|
| 1 | Rear bumper | Rear bumper - Scratch(es) - Loss in value |
| 2 | Vehicle glazing | Windscreen - Broken / torn - Replace |
| 3 | Trim / covers | Roof lining - Damaged - Replace |

Wear and tear

| No. | Component group | Description |
|-----|------------------------------|---|
| 1 | Front bumper | Front bumper - Stone chips - No deduction |
| 2 | Side panel - rear right side | Sill - dent(s) - No deduction |
| 3 | Rear bumper | Spoiler - Scratch(es) - No deduction |
| 4 | Bonnet | Bonnet - Stone chips - No deduction |
| 5 | Door - rear right side | Door - dent(s) - No deduction |

The vehicle shows signs of wear commensurate with its age and use.

Order/Scope of order

The order was placed to prepare a sales report for the vehicle described. This includes the following:

- Description of core relevant information about the vehicle
- Documentation of equipment features
(*Delivery by third-party service providers*)
- Documentation of damage, defects, missing parts
- Documentation of previous damage, unrepaired previous damage, repainting
- a brief visual or functional inspection of the equipment details if possible.
(*Functional tests of driver assistance systems are not included in the scope of services!*)
- a photo documentation of the vehicle



Basis for the order

This product is based on the Alphabet Fuhrpark GmbH guidelines for vehicle returns and valuations. The expert makes the explicit findings in each individual case objectively within the framework of the specified standards based on his or her own expertise.

The vehicle inspection takes place in a disassembled state.

Damage or defects that can only be detected during disassembly/diagnosis work or through advanced knowledge remain within the scope of the prognosis risk. An extended risk exists for concealed defects caused by fraudulent deception and not identifiable by the expert.

Damage or defects resulting from normal use or wear and tear of the vehicle will be accepted according to the applicable standard.

There was no explicit identification or monetary consideration of the expected features within the product.

Features which in their nature and severity slightly exceed normal use but do not constitute unacceptable damage will be documented and identified under signs of use if necessary.

Damage or defects which, according to the underlying standard, can no longer be attributed to normal use or wear and tear are listed in the product under "Depreciating Factors".

Depending on the product specification, a monetary ID can be provided. If this takes place, the costs can be 100% d or pro rata depending on the vehicle's age and mileage.

Previous damages

Apparently, no repaired previous damage could be found on the vehicle.

Comments

Fahrzeug hat rundherum erhöhte Lackwerte



Figure 1: Diagonal front (left)



Figure 2: Diagonal front (right)



Figure 3: Diagonal rear (left)



Figure 4: Diagonal rear (right)



Figure 5: Interior - front



Figure 6: Interior - rear



Figure 7: Instrument cluster



Figure 8: Instrument panel



Figure 9: interior 360° view



Figure 10: Cargo area



Figure 11: VIN



Figure 12: Mounted tyres



Figure 13: Documents

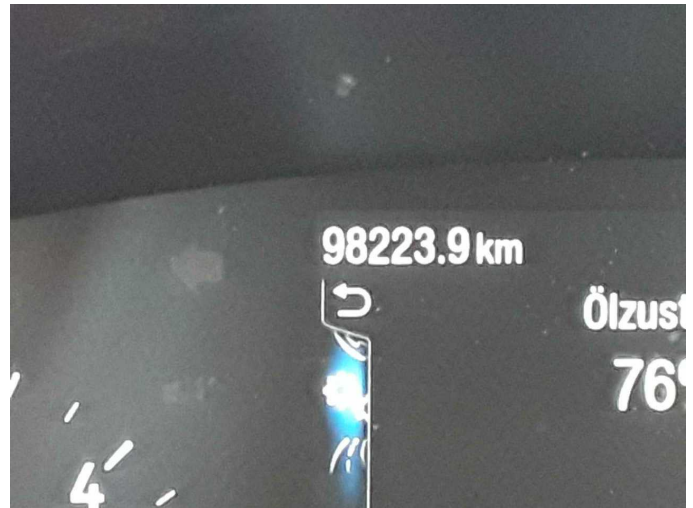


Figure 14: Documents

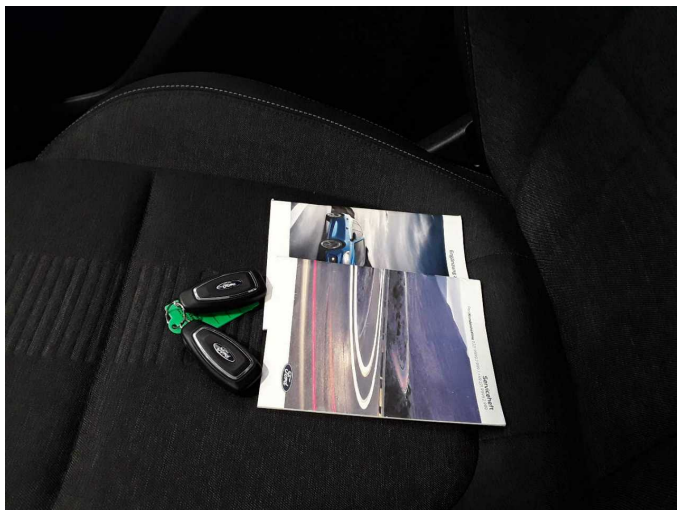


Figure 15: Documents



Figure 16: Additional tyres

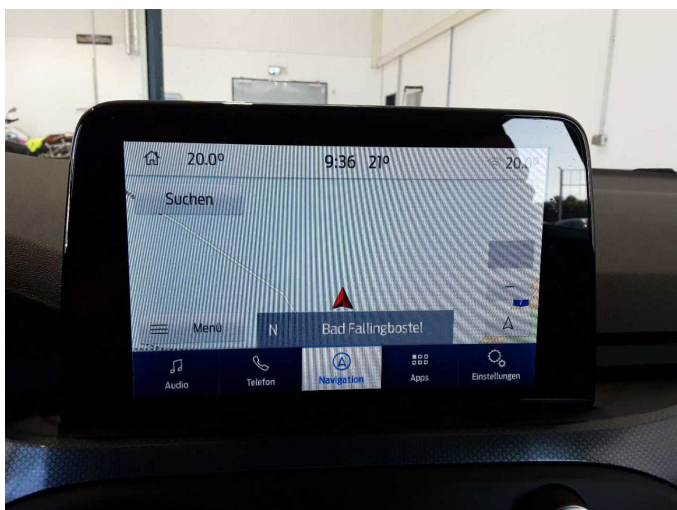


Figure 17: Navigation

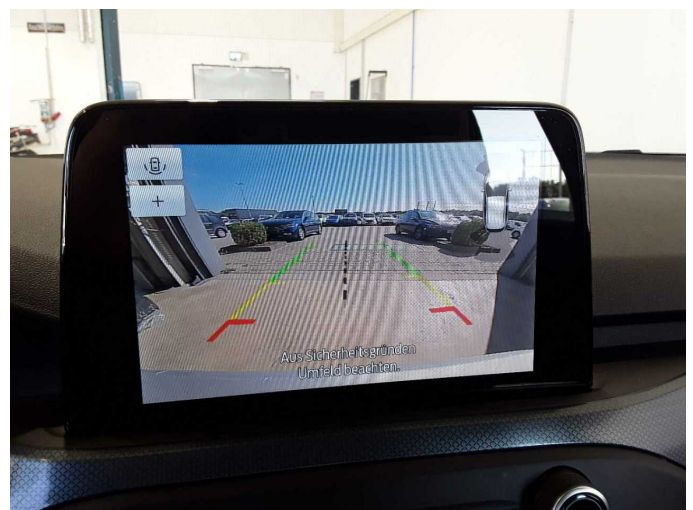


Figure 18: Misc.



Figure 19: Misc.



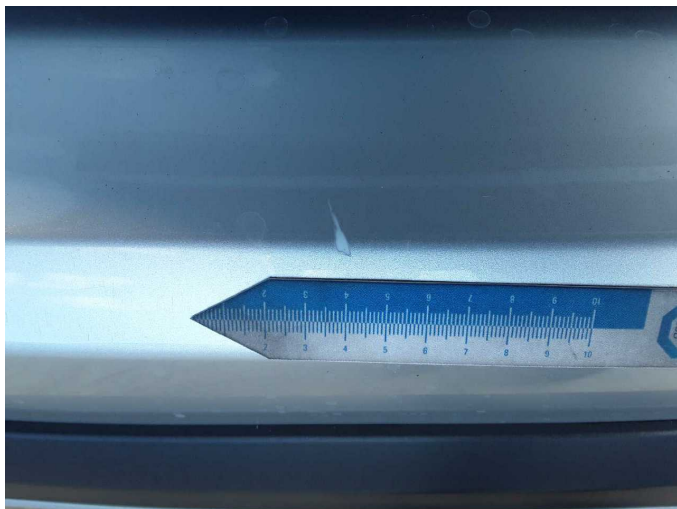
Figure 20: Misc.



Figure 21: Misc.



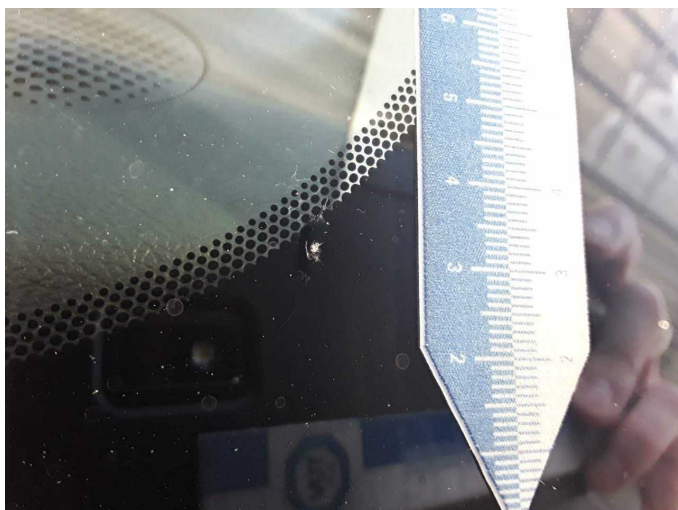
Damage 1: Rear bumper: Rear bumper - Scratch(es) - Loss in value



Damage 1: Rear bumper: Rear bumper - Scratch(es) - Loss in value



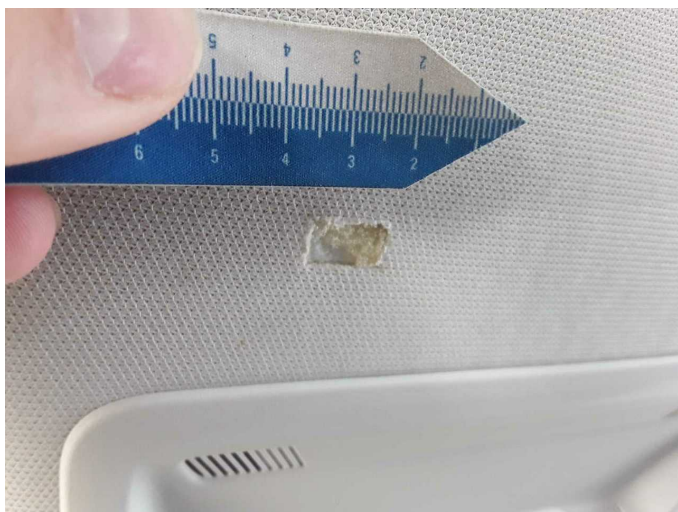
Damage 2: Vehicle glazing: Windscreen - Broken / torn - Replace



Damage 2: Vehicle glazing: Windscreen - Broken / torn - Replace



Damage 3: Trim / covers: Roof lining - Damaged - Replace



Damage 3: Trim / covers: Roof lining - Damaged - Replace



Wartungshistorie

(gemäß Auftraggeber Informationen)

Fahrgestellnummer: WF0PXXGCHPMD11689

Hersteller / Modell: FORD FORD Focus Turnier 1.5 EcoBlue Start-Stopp-System Aut. ACTIVE

| Datum | KM-Stand | Beschreibung |
|------------|----------|---|
| 30.04.2025 | 91.042 | Motoröl b. Wartung; Ölfilter ern; Regelwartungsdienst; Wartung Sonstiges |
| 14.02.2025 | 86.051 | AU |
| 27.02.2024 | 62.241 | Bremse Sonstiges; Bremsflüssigkeit; Bremsflüssigkeit ern; Bremsklötze hinten; Bremsklötze vorne; Bremsscheiben + Klötze h; Bremsscheiben + Klötze v; Bremsscheiben hinten; Bremsscheiben vorne; Kraftstofffilter ern; Luftfiltereinsatz ern; Motoröl b. Wartung; Ölfilter ern; Regelwartungsdienst; Wartung Sonstiges |
| 23.02.2023 | 30.700 | Motoröl b. Wartung; Ölfilter ern; Regelwartungsdienst; Wartung Sonstiges |