



Expertise

Protocol number: 41588205
Order No. / Reference: 25131861
Inspection date: 17 Sept 2025

Manufacturer: Ford

Model: Focus Turnier 1.5 EcoBlue Start-Stopp-System Aut.
COOL&CONNECT

VIN: WF0PXXGCHPLK03410



Vehicle details	
Manufacturer / Type / Model / Equipment	
Ford Focus Turnier 1.5 EcoBlue Start-Stopp-System Aut. COOL&CONNECT	
Vehicle Identification number	WF0PXXGCHPLK03410
Mileage (Read)	64,170 km
First registration	29 Jun 2020
Number of holders	2
Next periodical technical inspection	11/2025
(Report on hand)	
Power / Engine displacement	88 kw / 1,499 ccm
Fuel type / Cylinder	Diesel / 4
Gearbox / Number of gears	Automatic / 8
Type of drive	Front drive
Type of vehicle	Station wagon
Colour / colour code	Obsidian-Schwarz Metallic
Doors / Seats	5 / 5
Upholstery type	Cloth
Colour of upholstery	Black-Grey
Vehicle with smoke odor	no



Vehicle details

Maintenance booklet / proof	digital proof / incomplete	Next maintenance in	0 %
Last maintenance on / at	12/2022 at 30,416 km		
Key is / should be	2 / 2	FZG documents	ZB#2 (B) was available (copy), ZB#1 (S) was not available
		Letter No.	FV052756
Previous damage / Accident	None detectable	Repainting	None detectable
Inspection conditions	sufficient	Lifting equipment / pit	yes
Test drive	Not performed	Engine function test	Performed
Manufacturer key number/ type code number	8566 / BPV 00129		
Emission standard	EURO6;WLTP;DG;PI/CI; M, N1 I	Fine dust sticker	
Permitted total weight	1,995 kg	Empty weight	

Tyres

Mounted tyres

#	Tyre size	Type of tyre	Manufacturer	Tread depth
1)	215/55 R17 98V	Winter tyres on Light alloy	Pirelli	6mm / 6mm
2)	215/55 R17 98V	Winter tyres on Light alloy	Pirelli	6mm / 6mm

Additional tyres

#	Tyre size	Type of tyre	Manufacturer	Tread depth
1)	205/60 R16 92V	Summer tyres on Light alloy	Continental	5mm / 5mm
2)	205/60 R16 92V	Summer tyres on Light alloy	Continental	5mm / 5mm

Replacement

Typ	Tyre size	Type of tyre	Manufacturer	Tread depth
E	175/70 R16 96M	Summer tyres on Steel	Hankook	8 mm

Legend: Tread depth information for tires on the left is in the first place, for tires on the right is in the second place on the axle in the direction of travel

Equipment

Standard equipment

- Airbag: Passenger airbag deactivation
- Exterior mirrors in body color, driver and passenger side, electrically adjustable and heated (with integrated indicators and ambient lighting)
- Tires: 6.5 J x 16 alloy wheels (4) with 205/60 R 16 tires (in 5x2 spoke design)
- Woven fabric headliner
- Roof spoiler painted in body color
- tachometer
- Electronic Safety and Stability Program (ESP) (with Hill Start Assist, Emergency Brake Assist (EBA) and Traction Control)
- Driving mode switch, selective
- Electric front and rear windows (with overall closing function)
- Ford Easy Fuel (The Ford Easy Fuel convenient refueling system eliminates the need for a separate internal fuel cap and prevents misfueling by recognizing the size difference between petrol and diesel fuel nozzles. This ensures that the filler neck opens only when the correct fuel is used.)
- Luggage compartment lighting
- Luggage compartment floor, two-way adjustable
- Speed limiter (intelligent speed limiter with speed limit display)
- Cruise control system
- Transmission: 8-speed automatic transmission
- Back window, heater
- Interior lighting with LED technology (front and rear and map reading lights in the front)
- Isofix mounting (including top tether anchor points on the outer seats of the 2nd row)
- Air conditioning, manual
- Headrests 2 front and 3 rear, height adjustable
- LED daytime running lights (headlights with LED low beam)
- Steering column, adjustable (adjustable in height and reach)
- MyKey key system (individually programmable second key)
- Navigation: Ford Navigation, Ford SYNC 3 with AppLink, 8" touchscreen (20.3 cm) with DAB/DAB+ (Ford SYNC 3 communication and entertainment system with voice control, radio, 2 USB ports, 6 speakers and steering wheel remote control, Bluetooth hands-free system and audio streaming, SMS reading and sending option, voice control for audio and telephone, support for Android Auto and Apple CarPlay, dynamic navigation with TMCpro, road map for Europe, voice control, destination entry and search, advanced voice output, detailed visualization, Michelin travel guide for Europe)
- Pre-Collision Assist (FA Forward Alert) - with pedestrian and bicycle detection)
- Tire repair kit (max. 80 km/h permitted when used)
- Rear view camera
- Anti-lock braking system (ABS) with electronic brake-force distribution (EBD)
- Attachment points behind the second row of seats (for safety net and safety partition grilles, e.g. for luggage compartment partition grilles behind the rear seats)
- Chrome decor (on side windows)
- Roof rails, aluminum
- Diesel particulate filter (DPF)
- Electronic Shifter
- Driver information system (on-board computer with fuel consumption and mileage information as well as outside temperature display (monochrome on Trend) - color)
- Lane Assistant including Lane Keeping Assist
- Electric parking brake with auto-hold function (with one-button operation)
- Ford ECO-Coach (signals environmentally friendly driving)
- FordPass Connect including eCall, Live Traffic Information (only with navigation) and Wi-Fi hotspot (information about the current status or location of the vehicle as well as control of selected vehicle functions via smartphone with the FordPass app - eCall emergency call system for sending an emergency call in the event of an accident or manual activation - Current traffic information in real time (only in conjunction with navigation system) - Wi-Fi hotspot (up to 4G/LTE7, for up to 10 mobile devices))
- Glove compartment, illuminated
- Rear window wiper
- Instrument lighting, adjustable
- Intelligent safety system (front airbags for driver and front passenger - head-shoulder airbags front and rear - side airbags for driver and front passenger - seatbelt pretensioners and force limiters in the front and on the outer seats of the 2nd row - 3-point seatbelts on all seats, height-adjustable in the front - safety pedals)
- Steering wheel: 3-spoke design (in Sensico leather look)
- Make-up mirrors in driver and passenger sun visors
- Premium front center console (armrest, 2 cup holders, storage compartments, 12-volt and USB port)
- Fog lights (including static cornering lights)
- Emergency brake light (pulsating brake lights during heavy braking)
- Parking pilot system front and rear
- Pollen filter and dust filter
- Upholstery: Cloth
- Post-Collision Assist (In the event of a severe collision that would, for example, also trigger the airbag and in which the driver could be incapacitated, this system initiates the braking process. This reduces the risk of colliding with other obstacles and road users after the collision. The driver can intervene throughout the entire process and apply the accelerator or brake themselves.)



- Electromechanical power steering (EPAS (Electric Power Assisted Steering))
- Seats: Map grid on driver and passenger seat backrests
- Seats: Rear seat backrest (folding, 60 : 40 split)
- Start-stop system
- Carpet floor mats front
- Side window borders in black
- Unfastened seat belt warning system for the 1st and 2nd row of seats
- Central/double locking (including remote control, remote luggage compartment and fuel filler flap release, door lock only on driver's side)

- Tire pressure monitoring system (TPMS)
- Headlight assistant with day/night sensor
- Seats: Passenger seat, 2-way adjustable
- Seats: Driver's seat height adjustable (with manually adjustable lumbar support)
- Seats: Front sports seats with increased lateral support
- 12 volt socket in the luggage compartment
- Child safety lock in the rear doors, manual
- Lashing eyes in the luggage compartment
- Electronic immobilizer
- Heat-insulating glazing, tinted
- Additional heating

Extra equipment

- Paint finish: metallic
- Spare wheel: Emergency wheel (max. 80 km/h permitted when used.)

- Package: Winter (heated windscreen - heated steering wheel - front seats, individually and variably heated)
- Rear view camera with "Split View" technology J3KAR

Brief expert findings

Documents submitted	At the time of the inspection, the registration certificate Part 2 (letter) was available, but the registration certificate Part 1 (certificate) was not. (Copy)
VIN comparison	The vehicle identification number (VIN) was read from the vehicle and its conformity with the submitted documents was verified during the inspection by the undersigned.
Inspection	The inspection conditions were sufficient for the assessment of the vehicle. Lifting equipment and a pit were available for examining the vehicle.
Test drive	No test drive/maneuvering was carried out during the inspection of the vehicle.
Engine function test	An engine test run was performed.

Value reducing factors

No.	Component group	Description
1	Door - front left side	Door - dent(s) - Smart repair
2	Bonnet	Bonnet - dent(s) - Smart repair
3	Misc.	Inspection / maintenance - Due - Replace
4	Roof	Roof rail - right side - Scratched - Paint
5	Front bumper	Front bumper - Stone chips - Paint
6	Door - rear left side	Door - Scratch(es) - Paint
7	Door - rear right side	Door - Scratch(es) - Paint

Wear and tear

No.	Component group	Description
1	Body	Body - Scratch(es) - No deduction
2	Vehicle glazing	Windscreen - Stone chips - No deduction
3	Bonnet	Bonnet - Stone chips - No deduction
4	Side panel - rear left side	Side panel - Scratch(es) - No deduction

The vehicle shows signs of wear commensurate with its age and use.

Missing parts



Description

Documents - Service book

Order/Scope of order

The order was placed to prepare a sales report for the vehicle described. This includes the following:

- Description of core relevant information about the vehicle
- Documentation of equipment features
(*Delivery by third-party service providers*)
- Documentation of damage, defects, missing parts
- Documentation of previous damage, unrepaired previous damage, repainting
- a brief visual or functional inspection of the equipment details if possible.
(*Functional tests of driver assistance systems are not included in the scope of services!*)
- a photo documentation of the vehicle

Basis for the order

This product is based on the Alphabet Fuhrpark GmbH guidelines for vehicle returns and valuations. The expert makes the explicit findings in each individual case objectively within the framework of the specified standards based on his or her own expertise.

The vehicle inspection takes place in a disassembled state.

Damage or defects that can only be detected during disassembly/diagnosis work or through advanced knowledge remain within the scope of the prognosis risk. An extended risk exists for concealed defects caused by fraudulent deception and not identifiable by the expert.

Damage or defects resulting from normal use or wear and tear of the vehicle will be accepted according to the applicable standard.

There was no explicit identification or monetary consideration of the expected features within the product.

Features which in their nature and severity slightly exceed normal use but do not constitute unacceptable damage will be documented and identified under signs of use if necessary.

Damage or defects which, according to the underlying standard, can no longer be attributed to normal use or wear and tear are listed in the product under "Depreciating Factors".

Depending on the product specification, a monetary ID can be provided. If this takes place, the costs can be 100% d or pro rata depending on the vehicle's age and mileage.

Previous damages

Apparently, no repaired previous damage could be found on the vehicle.

Comments

- Winterradsatz ist kein Bestandteil des Auslieferungsumfangs

Bilder wurden gemacht



Figure 1: Diagonal front (left)



Figure 2: Diagonal front (right)



Figure 3: Diagonal rear (left)



Figure 4: Diagonal rear (right)



Figure 5: Interior - front



Figure 6: Interior - rear



Figure 7: Instrument cluster



Figure 8: Instrument panel



Figure 9: Interior 360° view



Figure 10: Cargo area



Figure 11: VIN



Figure 12: Mounted tyres

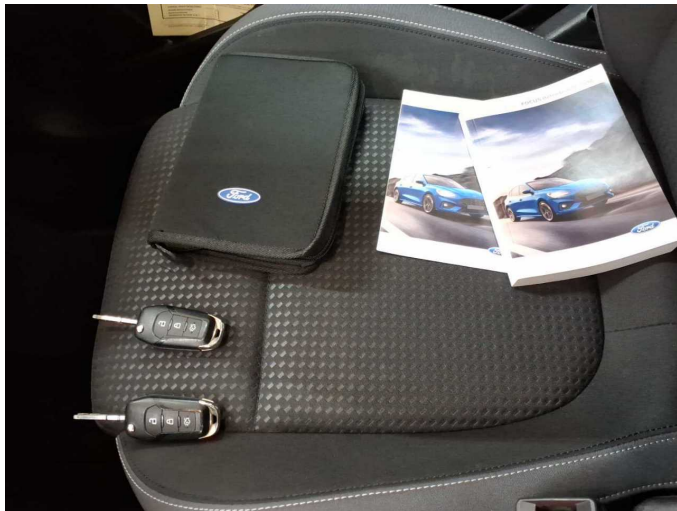


Figure 13: Documents



Figure 14: Documents

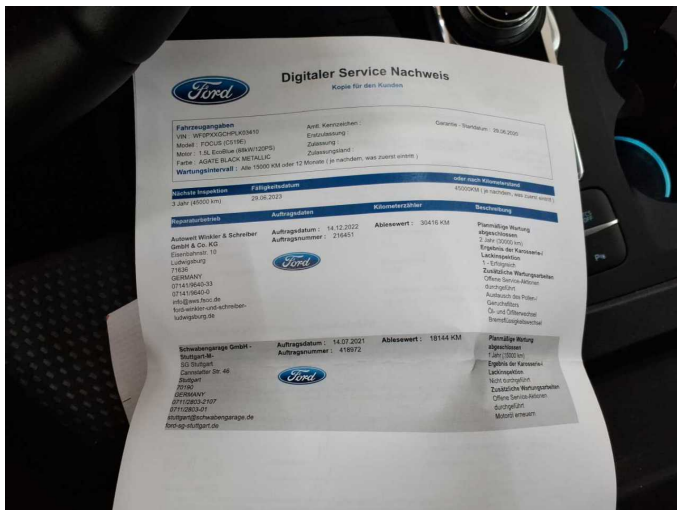


Figure 15: Documents

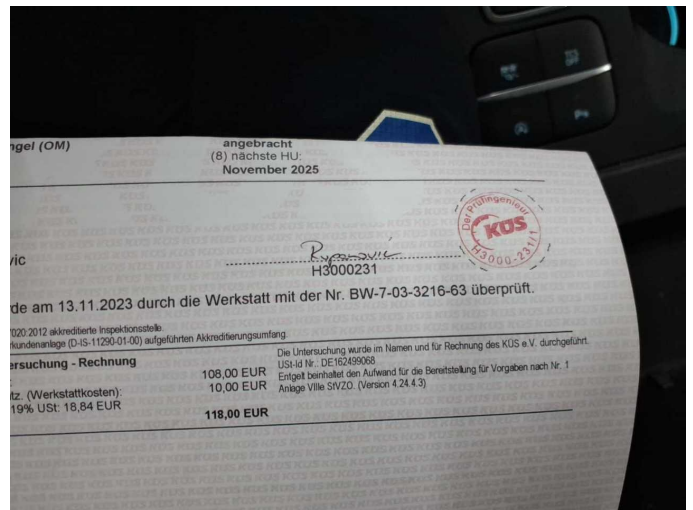


Figure 16: Documents



Figure 17: Additional tyres



Figure 18: Navigation



Figure 19: Misc.



Figure 20: Misc.



Figure 21: Misc.



Figure 22: Misc.



Figure 23: Misc.



Figure 24: Misc.

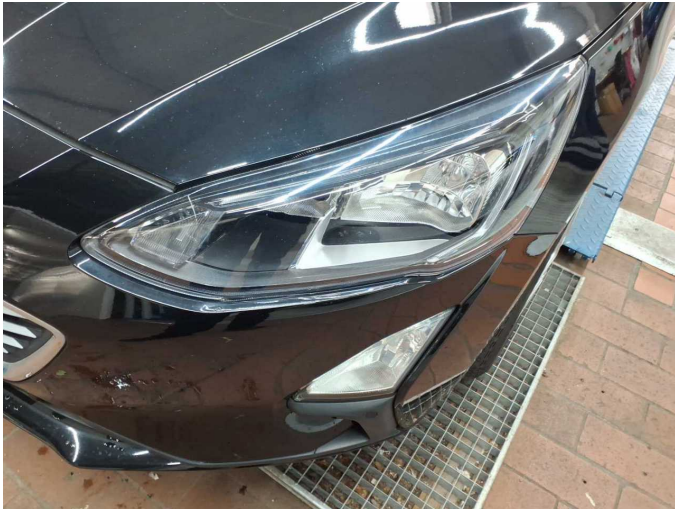


Figure 25: Misc.



Figure 26: Misc.



Figure 27: Misc.



Figure 28: Misc.



Damage 1: Door - front left side: Door - dent(s) - Smart repair



Damage 1: Door - front left side: Door - dent(s) - Smart repair



Damage 2: Bonnet: Bonnet - dent(s) - Smart repair



Damage 2: Bonnet: Bonnet - dent(s) - Smart repair



Damage 2: Bonnet: Bonnet - dent(s) - Smart repair



Damage 2: Bonnet: Bonnet - dent(s) - Smart repair



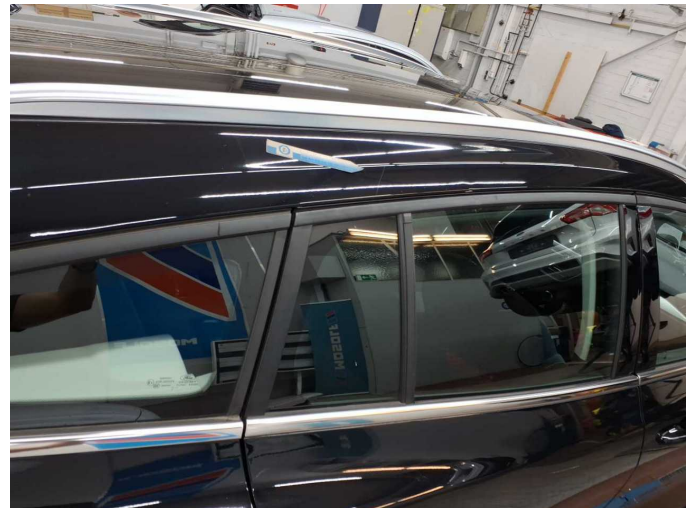
Damage 2: Bonnet: Bonnet - dent(s) - Smart repair



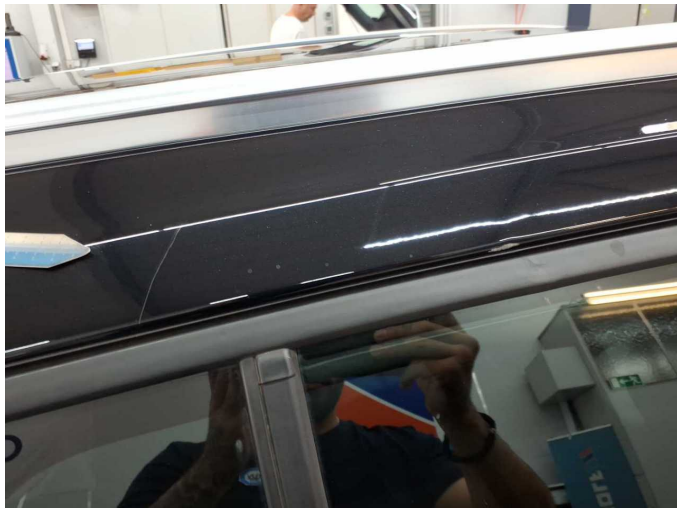
Damage 2: Bonnet: Bonnet - dent(s) - Smart repair



Damage 3: Misc.: Inspection / maintenance - Due - Replace



Damage 4: Roof: Roof rail - right side - Scratched - Paint



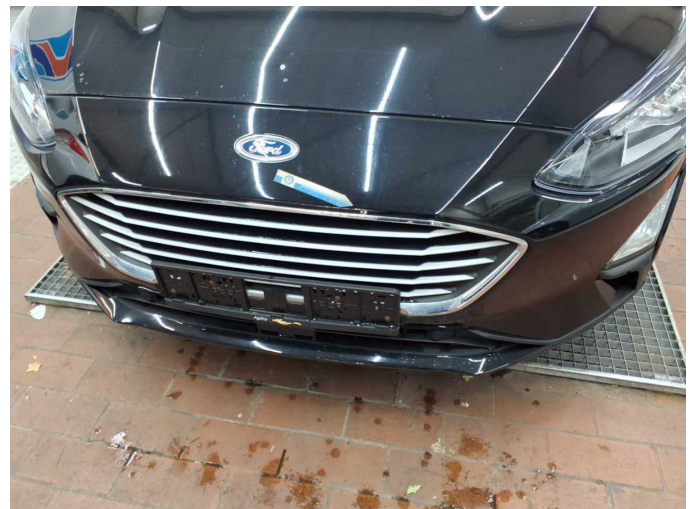
Damage 4: Roof: Roof rail - right side - Scratched - Paint



Damage 4: Roof: Roof rail - right side - Scratched - Paint



Damage 4: Roof: Roof rail - right side - Scratched - Paint



Damage 5: Front bumper: Front bumper - Stone chips - Paint



Damage 5: Front bumper: Front bumper - Stone chips - Paint



Damage 6: Door - rear left side: Door - Scratch(es) - Paint



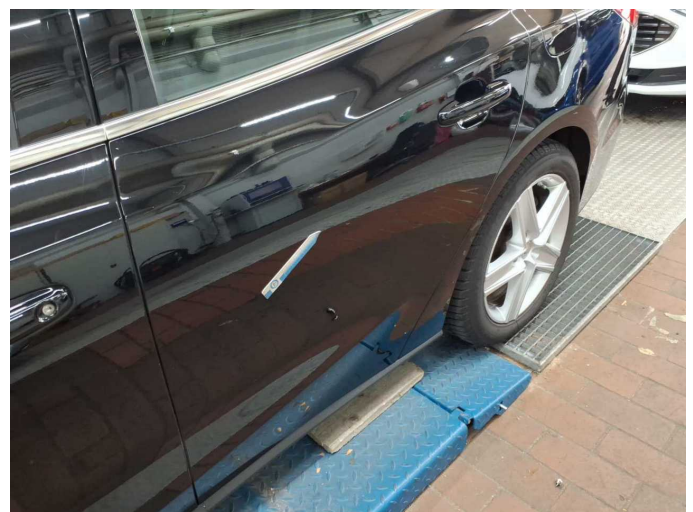
Damage 6: Door - rear left side: Door - Scratch(es) - Paint



Damage 6: Door - rear left side: Door - Scratch(es) - Paint



Damage 6: Door - rear left side: Door - Scratch(es) - Paint



Damage 6: Door - rear left side: Door - Scratch(es) - Paint



Damage 6: Door - rear left side: Door - Scratch(es) - Paint



Damage 7: Door - rear right side: Door - Scratch(es) - Paint



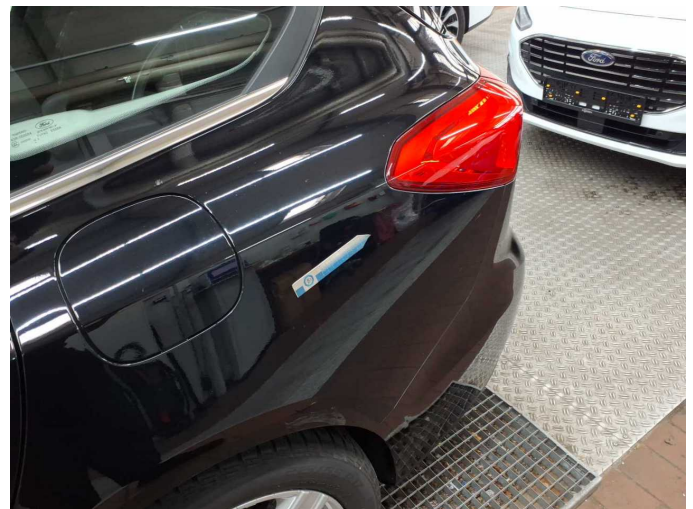
Damage 7: Door - rear right side: Door - Scratch(es) - Paint



Damage 7: Door - rear right side: Door - Scratch(es) - Paint



Damage 7: Door - rear right side: Door - Scratch(es) - Paint



Wear and tear 4: Side panel - rear left side: Side panel - Scratch(es) - No deduction



Wear and tear 4: Side panel - rear left side: Side panel - Scratch(es) - No deduction