

Expertise

Protocol number: 41198375
Order No. / Reference: 25159234
Inspection date: 25 Aug 2025

Manufacturer: Ford

Model: Focus Turnier 2.0 EcoBlue Start-Stopp-System Aut. ST-LINE

VIN: WF0PXXGCHPLK01580



Vehicle details

Manufacturer / Type / Model / Equipment

Ford Focus Turnier 2.0 EcoBlue Start-Stopp-System Aut. ST-LINE

Vehicle Identification number WF0PXXGCHPLK01580

Mileage (Read) 109,801 km

First registration 31 Jul 2020

Number of holders 1

Power / Engine displacement 110 kw / 1,995 ccm

Fuel type / Cylinder Diesel / 4

Gearbox / Number of gears Automatic / 8

Type of drive Front drive

Type of vehicle Station wagon

Colour / colour code Panther-Blau Metallic

Doors / Seats 5 / 5

Upholstery type Cloth

Colour of upholstery Anthracite



Vehicle details

Maintenance booklet / proof	digital proof / complete	Next maintenance in	36 %
Last maintenance on / at	04/2025 at 90,697 km		
Key is / should be	2 / 2	FZG documents	ZB#2 (B) was available (copy), ZB#1 (S) was not available
		Letter No.	FV056548
Previous damage / Accident	None detectable	Repainting	None detectable
Inspection conditions	sufficient	Lifting equipment / pit	yes
Test drive	Not performed	Engine function test	Performed
Manufacturer key number/ type code number	8566 / BQQ 00119		
Emission standard	EURO6;WLTP;DG;PI/CI; M, N1 I	Fine dust sticker	
Permitted total weight	2,105 kg	Empty weight	

Tyres

Mounted tyres

#	Tyre size	Type of tyre	Manufacturer	Tread depth
1)	235/40 R18 91W	Summer tyres on Light alloy	Michelin	5mm / 5mm
2)	235/40 R18 91W	Summer tyres on Light alloy	Michelin	5mm / 5mm

Additional tyres

#	Tyre size	Type of tyre	Manufacturer	Tread depth
1)	205/60 R16 96H	Winter tyres on Light alloy	Pirelli	4mm / 4mm
2)	205/60 R16 96H	Winter tyres on Light alloy	Pirelli	3mm / 3mm

Replacement

Typ	Tyre size	Type of tyre	Manufacturer	Tread depth
N	125/70 R16 96M	Summer tyres on Steel	Hankook	3 mm

Legend: Tread depth information for tires on the left is in the first place, for tires on the right is in the second place on the axle in the direction of travel



Equipment

Standard equipment

- Airbag: Passenger airbag deactivation
- Exterior mirrors in body color, driver and passenger side, electrically adjustable and heated
- Tires: 7 J x 17 alloy wheels (4) with 215/50 R 17 tires
- Black woven fabric headliner
- Roof spoiler painted in body color
- Digital instrument panel 12.3" (31.2 cm screen diagonal)
- Front door sill trim
- Driver information system
- Lane Assistant including Lane Keeping Assist
- Electric windows front and rear
- Ford ECO Coach
- FordPass Connect including eCall, Live Traffic Information (only with navigation) and Wi-Fi hotspot
- Speed limiter
- Transmission: 8-speed automatic transmission
- Tailgate, electric and sensor-controlled
- Rear window wiper
- Instrument lighting, adjustable
- Isofix mount
- Honeycomb grille
- LED fog lights
- Steering wheel: Leather steering wheel "ST" design
- Steering column, adjustable
- Center console "Premium" front
- Navigation: Ford Navigation, Ford SYNC 3 with AppLink, 8" touchscreen (20.3 cm) with DAB/DAB+
- Package: Comfort
- Parking pilot system front and rear
- Pollen filter and dust filter
- Post-Collision Assist
- Tire repair kit
- Rear view camera with "Split View" technology
- Side windows from 2nd row and rear window, dark tinted
- Seats: Passenger seat height adjustable, manual
- Seats: Rear seat backrest
- Start-stop system
- Carpet floor mats front, velour
- Child safety lock on sliding doors
- Unfastened seat belt warning system for the 1st and 2nd row of seats
- Central/double locking
- Anti-lock braking system (ABS) with electronic brake-force distribution (EBD)
- Attachment points behind the second row of seats
- Body styling kit
- Roof rails, black
- Diesel particulate filter (DPF)
- tachometer
- Electronic Safety and Stability Program (ESP)
- Driving mode switch, selective
- Chassis: Sporty tuning
- Electric parking brake with auto-hold function
- Ford Power start function
- Luggage compartment lighting
- Luggage compartment floor, two-way adjustable
- Cruise control system
- Glove compartment, illuminated
- Back window, heater
- Interior lighting with LED technology
- Intelligent security system
- Headrests 2 front and 3 rear, height adjustable
- Charging station for mobile devices (inductive)
- LED daytime running lights
- Steering wheel: paddle shifters on the steering wheel
- Armrest - centre, rear
- MyKey key system (individually programmable second key)
- Emergency brake light
- Package: Family
- Package: View
- Pedals with aluminum pads
- Upholstery: Cloth
- Pre-Collision Assist
- Tire pressure monitoring system (TMPS)
- Headlight assistant with day/night sensor
- Electro-mechanical power steering
- Seats: Driver's seat height adjustable
- Seats: Front sports seats with increased lateral support
- 12 volt socket in the luggage compartment
- Carpet floor mats front and rear, velour
- Lashing eyes in the luggage compartment
- Electronic immobilizer
- Heat-insulating glazing, tinted
- Additional heating

Extra equipment



- Cigarette lighter and ashtray in the center console
- Package: Technology II (Traffic Jam Assist with Stop & Go function - Lane Keeping Pilot - Intelligent Cruise Control, Adaptive iACC - with Traffic Sign Recognition - Wrong-Way Driver Warning - Evasive Steer Assistance (ESA) - High Beam Assist (in conjunction with intelligent LED headlights with anti-glare high beam assist) - Fatigue Warning)
- Paint finish: metallic
- Safety net to separate the passenger and luggage compartments
- Tires: 8 J x 18 light alloy wheels (4) with 235/40 R 18 (5x2-spoke design in black, high-sheen)
- Adaptive LED headlights with glare-free high beam assist and camera-based cornering lights (intelligent light cone, camera-controlled - automatic headlight range control - sequential LED indicators, front - LED taillights)
- Package: Winter (heated windscreen - heated steering wheel - front seats, individually and variably heated)
- Seats: Ford ergonomic seat with fabric upholstery (front seats 18-way adjustable: - length, height and angle of the seat extendable thigh support - adjustable backrest - 4-way electrically adjustable lumbar support - 4-way adjustable headrest)
- Spare wheel: Emergency wheel (max. 80 km/h permitted when used.)

Brief expert findings

Documents submitted	At the time of the inspection, the registration certificate Part 2 (letter) was available, but the registration certificate Part 1 (certificate) was not. (Copy)
VIN comparison	The vehicle identification number (VIN) was read from the vehicle and its conformity with the submitted documents was verified during the inspection by the undersigned.
Inspection	The inspection conditions were sufficient for the assessment of the vehicle. Lifting equipment and a pit were available for examining the vehicle.
Test drive	No test drive/maneuvering was carried out during the inspection of the vehicle.
Engine function test	An engine test run was performed.

Value reducing factors

No.	Component group	Description
1	Side panel - rear right side	Side panel - Scratch(es) - Smart repair
2	Rear bumper	Rear bumper - Scratched - Repair and paint
3	Side panel - rear left side	Side panel - Dent / paintcoat damage - Repair and paint

Wear and tear

No.	Component group	Description
1	Bonnet	Bonnet - Stone chips - No deduction
2	Vehicle glazing	Windscreen - Stone chips - No deduction
3	Interior	Interior - Scratch(es) - No deduction
4	Front bumper	Front bumper - Stone chips - No deduction

The vehicle shows signs of wear commensurate with its age and use.

Missing parts

Description

Interior - Rear shelf



Order/Scope of order

The order was placed to prepare a sales report for the vehicle described. This includes the following:

- Description of core relevant information about the vehicle
- Documentation of equipment features
(Delivery by third-party service providers)
- Documentation of damage, defects, missing parts
- Documentation of previous damage, unrepaired previous damage, repainting
- a brief visual or functional inspection of the equipment details if possible.
(Functional tests of driver assistance systems are not included in the scope of services!)
- a photo documentation of the vehicle

Basis for the order

This product is based on the Alphabet Fuhrpark GmbH guidelines for vehicle returns and valuations. The expert makes the explicit findings in each individual case objectively within the framework of the specified standards based on his or her own expertise.

The vehicle inspection takes place in a disassembled state.

Damage or defects that can only be detected during disassembly/diagnosis work or through advanced knowledge remain within the scope of the prognosis risk. An extended risk exists for concealed defects caused by fraudulent deception and not identifiable by the expert.

Damage or defects resulting from normal use or wear and tear of the vehicle will be accepted according to the applicable standard.

There was no explicit identification or monetary consideration of the expected features within the product.

Features which in their nature and severity slightly exceed normal use but do not constitute unacceptable damage will be documented and identified under signs of use if necessary.

Damage or defects which, according to the underlying standard, can no longer be attributed to normal use or wear and tear are listed in the product under "Depreciating Factors".

Depending on the product specification, a monetary ID can be provided. If this takes place, the costs can be 100% d or pro rata depending on the vehicle's age and mileage.

Previous damages

Apparently, no repaired previous damage could be found on the vehicle.

Comments

- Der 2.Radsatz gehört nicht zur Ausstattung und wurde nicht in der Bewertung berücksichtigt.



Figure 1: Diagonal front (left)



Figure 2: Diagonal front (right)



Figure 3: Diagonal rear (left)



Figure 4: Diagonal rear (right)



Figure 5: Interior - front



Figure 6: Interior - rear



Figure 7: Instrument cluster



Figure 8: Instrument panel



Figure 9: interior 360° view ([Online link](#))



Figure 10: Cargo area



Figure 11: VIN



Figure 12: Mounted tyres

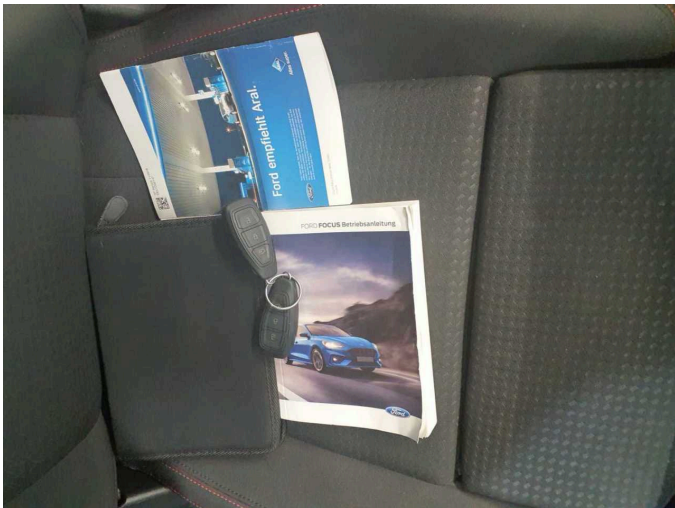


Figure 13: Documents

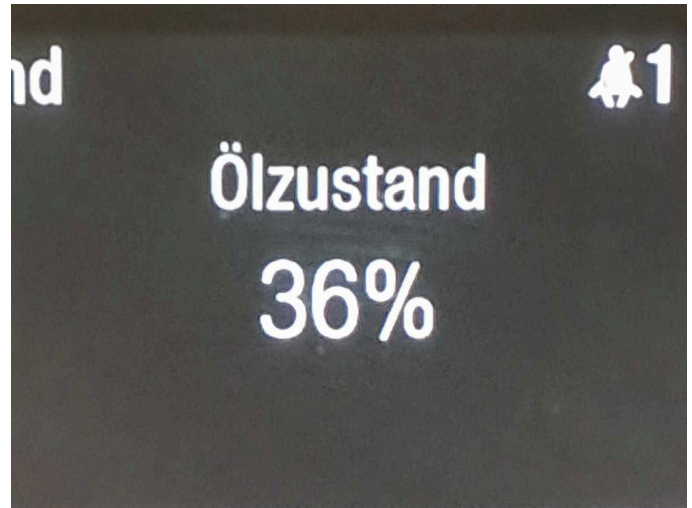


Figure 14: Documents

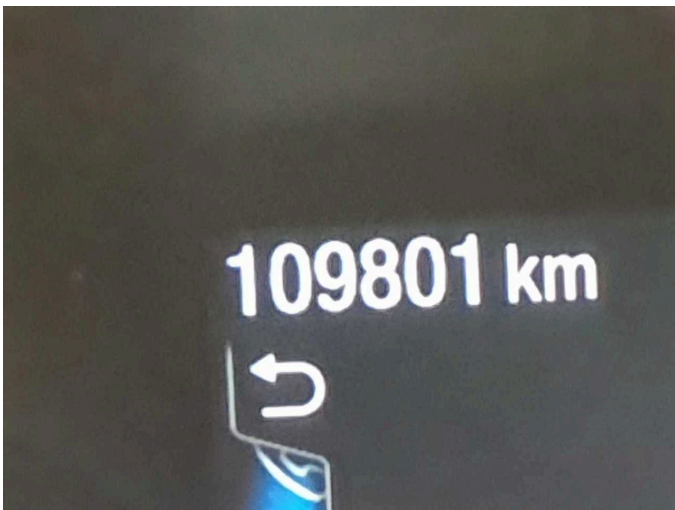


Figure 15: Documents



Figure 16: Additional tyres



Figure 17: Additional tyres

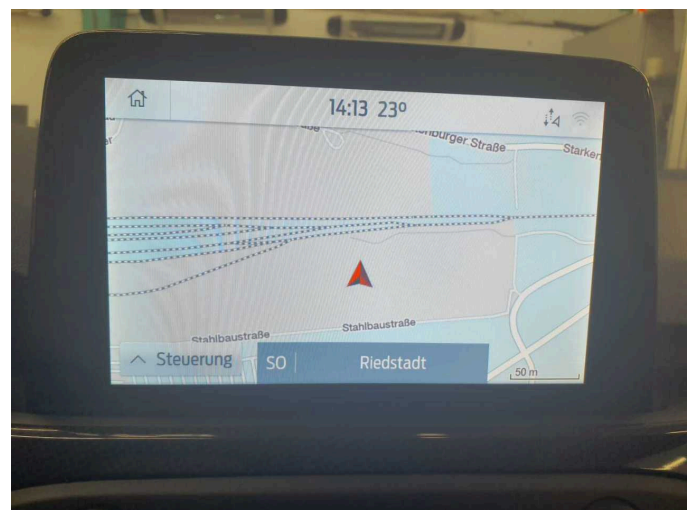


Figure 18: Navigation



Figure 19: Misc.



Figure 20: Misc.



Figure 21: Misc.



Figure 22: Misc.



Figure 23: Misc.



Figure 24: Misc.



Figure 25: Misc.



Figure 26: Misc.



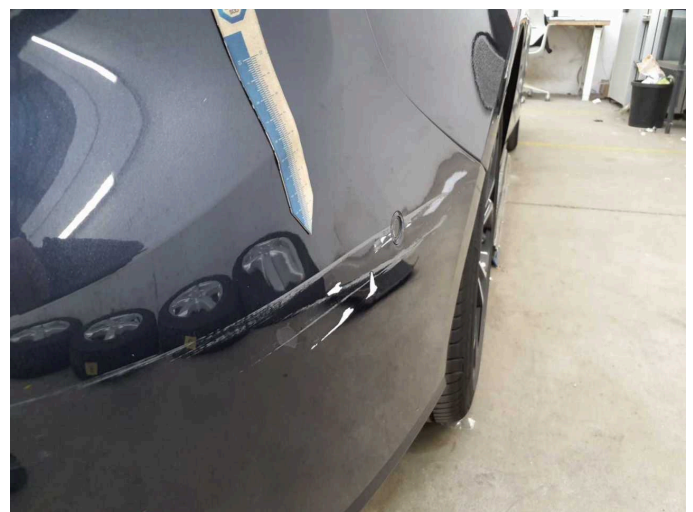
Figure 27: Misc.



Damage 1: Side panel - rear right side: Side panel - Scratch(es) - Smart repair



Damage 1: Side panel - rear right side: Side panel - Scratch(es) - Smart repair



Damage 2: Rear bumper: Rear bumper - Scratched - Repair and paint



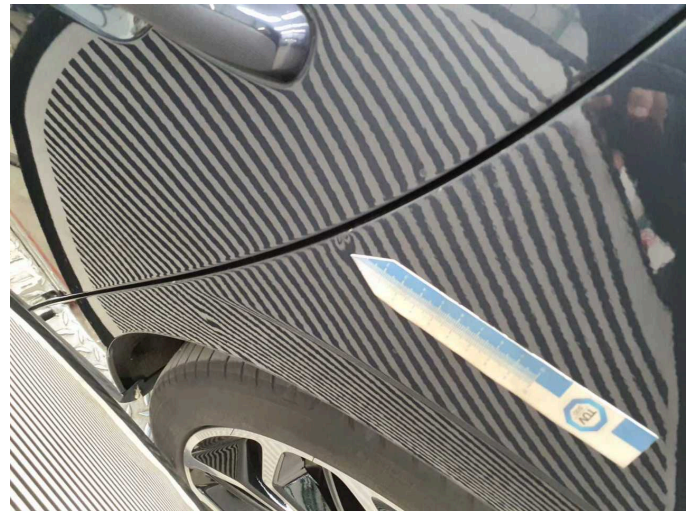
Damage 2: Rear bumper: Rear bumper - Scratched - Repair and paint



Damage 3: Side panel - rear left side: Side panel - Dent / paintcoat damage - Repair and paint



Damage 3: Side panel - rear left side: Side panel - Dent / paintcoat damage - Repair and paint



Damage 3: Side panel - rear left side: Side panel - Dent / paintcoat damage - Repair and paint



Missing part 1: Interior: Rear shelf - Missing - Replace



Wartungshistorie

(gemäß Auftraggeber Informationen)

Fahrgestellnummer: WF0PXXGCHPLK01580
Hersteller / Modell: FORD FORD Focus Turnier 2.0 EcoBlue Start-Stopp-System Aut. ST-LINE

Datum	KM-Stand	Beschreibung
25.07.2025	105.882	AU; Batterie ern; Systemtest/Eigendiagnose
04.04.2025	90.697	Motoröl b. Wartung; Ölfilter ern; Regelwartungsdienst; Wartung Sonstiges
13.11.2023	56.213	Bremsflüssigkeit; Bremsflüssigkeit ern; Kraftstofffilter ern; Luftfiltereinsatz ern; Motoröl b. Wartung; Ölfilter ern; Regelwartungsdienst; Wartung Sonstiges
30.08.2023	52.305	AU
30.12.2022	46.598	Bremsklötze hinten; Bremsklötze vorne; Bremsscheiben + Klötze h; Bremsscheiben hinten
10.12.2021	30.134	Kleine Inspektion; Motoröl b. Wartung; Ölfilter ern; Wartung Sonstiges