



Expertise

Protocol number: 41409842  
Order No. / Reference: 25167378  
Inspection date: 8 Sept 2025

Manufacturer: Ford

Model: Focus Turnier 1.5 EcoBlue Start-Stopp-System  
COOL&CONNECT

VIN: WF0PXXGCHPLE23342



Vehicle details	
<b>Manufacturer / Type / Model / Equipment</b>	
Ford Focus Turnier 1.5 EcoBlue Start-Stopp-System COOL&CONNECT	
<b>Vehicle Identification number</b>	WF0PXXGCHPLE23342
<b>Mileage (Read)</b>	87,045 km
<b>First registration</b>	22 Sept 2020
<b>Number of holders</b>	1
<b>Power / Engine displacement</b>	70 kw / 1,499 ccm
<b>Fuel type / Cylinder</b>	Diesel / 4
<b>Gearbox / Number of gears</b>	Manual / 6
<b>Type of drive</b>	Front drive
<b>Type of vehicle</b>	Station wagon
<b>Colour / colour code</b>	Blazer-Blau
<b>Doors / Seats</b>	5 / 5
<b>Upholstery type</b>	Cloth
<b>Colour of upholstery</b>	Black-Grey
<b>Vehicle with smoke odor</b>	no



## Vehicle details

<b>Maintenance booklet / proof</b>	Available / complete	<b>Next maintenance in</b>	2 %
<b>Last maintenance on / at</b>	06/2024 at 54,890 km		
<b>Key is / should be</b>	2 / 2	<b>FZG documents</b>	ZB#2 (B) was available (copy), ZB#1 (S) was not available
		<b>Letter No.</b>	FV099683
<b>Previous damage / Accident</b>	None detectable	<b>Repainting</b>	None detectable
<b>Inspection conditions</b>	sufficient	<b>Lifting equipment / pit</b>	yes
<b>Test drive</b>	Not performed	<b>Engine function test</b>	Performed
<b>Manufacturer key number/ type code number</b>	8566 / BPS 00100		
<b>Emission standard</b>	EURO6;WLTP;DG;PI/CI; M, N1 I	<b>Fine dust sticker</b>	
<b>Permitted total weight</b>	1,955 kg	<b>Empty weight</b>	

## Tyres

### Mounted tyres

#	Tyre size	Type of tyre	Manufacturer	Tread depth
1)	205/60 R16 92H	Winter tyres on Light alloy	Hankook	6mm / 5mm
2)	205/60 R16 92H	Winter tyres on Light alloy	Hankook	7mm / 6mm

### Replacement

Typ	Tyre size	Type of tyre	Manufacturer	Tread depth
	Tirefit	Expiration date 08/2024		

**Legend:** Tread depth information for tires on the left is in the first place, for tires on the right is in the second place on the axle in the direction of travel

## Equipment

### Standard equipment

- Airbag: Passenger airbag deactivation
- Exterior mirrors in body color, driver and passenger side, electrically adjustable and heated
- Tires: 6.5 J x 16 alloy wheels (4) with 205/60 R 16 tires (in 5x2 spoke design)
- Roof rails, aluminum
- Diesel particulate filter (DPF)
- Electronic Safety and Stability Program (ESP)
- Driving mode switch, selective
- Electric windows front and rear
- Ford ECO Coach
- Luggage compartment lighting
- Luggage compartment floor, two-way adjustable
- Speed limiter
- Cruise control system
- Transmission: 6-speed manual transmission
- Glove compartment, illuminated
- Back window, heater
- Rear window wiper
- Interior lighting with LED technology
- Intelligent security system
- Air conditioning, manual
- Paint finish: Uni
- LED daytime running lights
- Steering wheel: leather steering wheel 3-spoke design
- Center console "Premium" front
- Navigation: Ford Navigation, Ford SYNC 3 with AppLink, 8" touchscreen (20.3 cm) with DAB/DAB+ (Ford SYNC 3 communication and entertainment system with voice control, radio, 2 USB ports, 6 speakers and steering wheel remote control, Bluetooth hands-free system and audio streaming, SMS reading and sending option, voice control for audio and telephone, support for Android Auto and Apple CarPlay, dynamic navigation with TMCpro, road map for Europe, voice control, destination entry and search, advanced voice output, detailed visualization, Michelin travel guide for Europe)
- Pre-Collision Assist (FA Forward Alert) - with pedestrian and bicycle detection)
- Tire pressure monitoring system (TPMS)
- Headlight assistant with day/night sensor
- Seats: Passenger seat, 2-way adjustable
- Seats: Rear seat backrest
- Start-stop system
- Lashing eyes in the luggage compartment
- Electronic immobilizer
- Heat-insulating glazing, tinted
- Additional heating
- Anti-lock braking system (ABS) with electronic brake-force distribution (EBD)
- Attachment points behind the second row of seats
- Chrome decor
- Woven fabric headliner
- Roof spoiler painted in body color
- tachometer
- Driver information system
- Lane Assistant including Lane Keeping Assist
- Electric parking brake with auto-hold function
- FordPass Connect including eCall, Live Traffic Information (only with navigation) and Wi-Fi hotspot (information about the current status or location of the vehicle as well as control of selected vehicle functions via smartphone with the FordPass app - eCall emergency call system for sending an emergency call in the event of an accident or manual activation - Current traffic information in real time (only in conjunction with navigation system) - Wi-Fi hotspot (up to 4G/LTE7, for up to 10 mobile devices))
- Instrument lighting, adjustable
- Isofix mount
- Headrests 2 front and 3 rear, height adjustable
- Charging station for mobile devices (inductive)
- Leather gear knob
- Steering column, adjustable
- MyKey key system (individually programmable second key)
- Fog light
- Emergency brake light
- Parking pilot system front and rear
- Pollen filter and dust filter
- Upholstery: Cloth
- Post-Collision Assist (In the event of a severe collision that would, for example, also trigger the airbag and in which the driver could be incapacitated, this system initiates the braking process. This reduces the risk of colliding with other obstacles and road users after the collision. The driver can intervene throughout the entire process and apply the accelerator or brake themselves.)
- Tire repair kit
- Rear view camera with "Split View" technology
- Electro-mechanical power steering
- Seats: Driver's seat height adjustable
- Seats: Front sports seats with increased lateral support
- 12 volt socket in the luggage compartment
- Unfastened seat belt warning system for the 1st and 2nd row of seats
- Central/double locking



### Extra equipment

- Removable trailer hitch

### Brief expert findings

Documents submitted	At the time of the inspection, the registration certificate Part 2 (letter) was available, but the registration certificate Part 1 (certificate) was not. (Copy)
VIN comparison	The vehicle identification number (VIN) was read from the vehicle and its conformity with the submitted documents was verified during the inspection by the undersigned.
Inspection	The inspection conditions were sufficient for the assessment of the vehicle. Lifting equipment and a pit were available for examining the vehicle.
Test drive	No test drive/maneuvering was carried out during the inspection of the vehicle.
Engine function test	An engine test run was performed.

### Value reducing factors

No.	Component group	Description
1	Equipment	Tirefit filler - Expired - Replace
2	Sill - right side	Sill - dent(s) - Smart repair
3	Front bumper	Front bumper - Scratched - Paint
4	Vehicle glazing	Windscreen with lane departure assistant - Stone chips - Replace

### Wear and tear

No.	Component group	Description
1	Rear bumper	Bumper with Parktronic - Scratch(es) - No deduction

The vehicle shows signs of wear commensurate with its age and use.

### Order/Scope of order

The order was placed to prepare a sales report for the vehicle described. This includes the following:

- Description of core relevant information about the vehicle
- Documentation of equipment features  
(*Delivery by third-party service providers*)
- Documentation of damage, defects, missing parts
- Documentation of previous damage, unrepaired previous damage, repainting
- a brief visual or functional inspection of the equipment details if possible.  
(*Functional tests of driver assistance systems are not included in the scope of services!*)
- a photo documentation of the vehicle



## Basis for the order

This product is based on the Alphabet Fuhrpark GmbH guidelines for vehicle returns and valuations. The expert makes the explicit findings in each individual case objectively within the framework of the specified standards based on his or her own expertise.

The vehicle inspection takes place in a disassembled state.

Damage or defects that can only be detected during disassembly/diagnosis work or through advanced knowledge remain within the scope of the prognosis risk. An extended risk exists for concealed defects caused by fraudulent deception and not identifiable by the expert.

Damage or defects resulting from normal use or wear and tear of the vehicle will be accepted according to the applicable standard.

There was no explicit identification or monetary consideration of the expected features within the product.

Features which in their nature and severity slightly exceed normal use but do not constitute unacceptable damage will be documented and identified under signs of use if necessary.

Damage or defects which, according to the underlying standard, can no longer be attributed to normal use or wear and tear are listed in the product under "Depreciating Factors".

Depending on the product specification, a monetary ID can be provided. If this takes place, the costs can be 100% d or pro rata depending on the vehicle's age and mileage.

## Previous damages

Apparently, no repaired previous damage could be found on the vehicle.





**Figure 1:** Diagonal front (left)



**Figure 2:** Diagonal front (right)



**Figure 3:** Diagonal rear (left)



**Figure 4:** Diagonal rear (right)



**Figure 5:** Interior - front



**Figure 6:** Interior - rear





Figure 7: Instrument cluster



Figure 8: Instrument panel



Figure 9: Interior 360° view



Figure 10: Cargo area



Figure 11: VIN



Figure 12: Mounted tyres





Figure 13: Documents

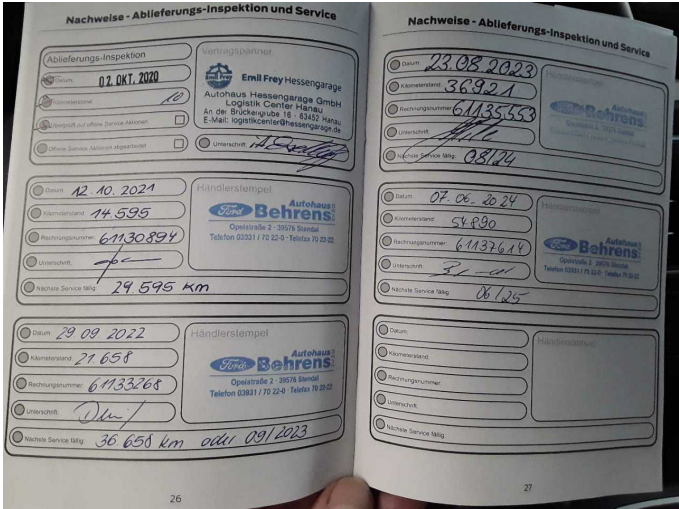


Figure 14: Documents

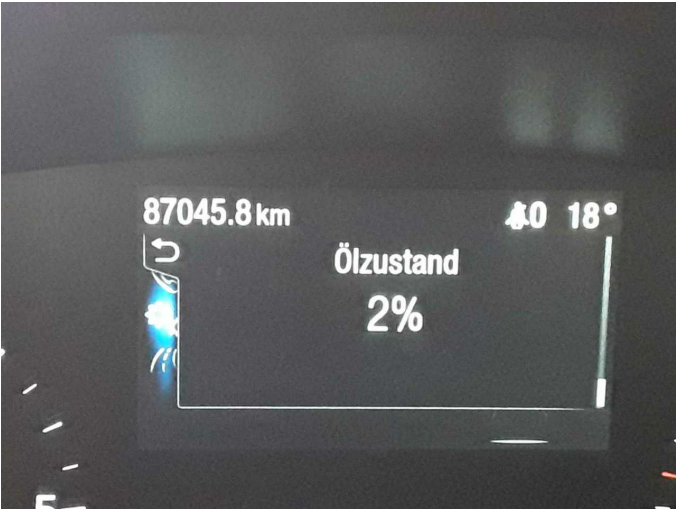


Figure 15: Documents



Figure 16: Navigation



Figure 17: Misc.



Figure 18: Misc.





Figure 19: Misc.



Figure 20: Misc.



Figure 21: Misc.



Figure 22: Misc.



Damage 1: Equipment: Tirefit filler - Expired - Replace



Damage 2: Sill - right side: Sill - dent(s) - Smart repair





**Damage 2:** Sill - right side: Sill - dent(s) - Smart repair



**Damage 3:** Front bumper: Front bumper - Scratched - Paint



**Damage 3:** Front bumper: Front bumper - Scratched - Paint



**Damage 3:** Front bumper: Front bumper - Scratched - Paint



**Damage 3:** Front bumper: Front bumper - Scratched - Paint



**Damage 3:** Front bumper: Front bumper - Scratched - Paint



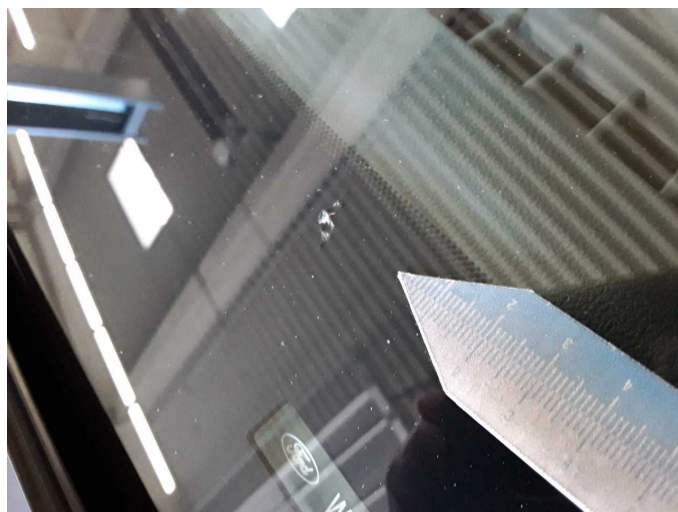
**Damage 3:** Front bumper: Front bumper - Scratched - Paint



**Damage 4:** Vehicle glazing: Windscreen with lane departure assistant - Stone chips - Replace



**Damage 4:** Vehicle glazing: Windscreen with lane departure assistant - Stone chips - Replace



**Damage 4:** Vehicle glazing: Windscreen with lane departure assistant - Stone chips - Replace