



# FORD Focus 2018 SW Diesel

## Focus SW 1.5 ecoblue ST-Line s&s 120cv

VIN NO WF0PXXGCHPKC42710

Registration Number FV440VH



MOT Date

2025-02-05

Last Service



Number of Owners



Last Service Mileage



Number of Keys



First Registration Date

2019-02-26

Odometer Reading

85788 km

Country First Registered

Italy

### Inspection Report Summary

|                         |                       |                |                 |
|-------------------------|-----------------------|----------------|-----------------|
| Customer                | BCA Lodi              | Report Number  | P20250923161240 |
| Inspection Date / Place | 2025-09-23 / BCA Lodi | Cosmetic Grade | 3               |

### Vehicle Summary

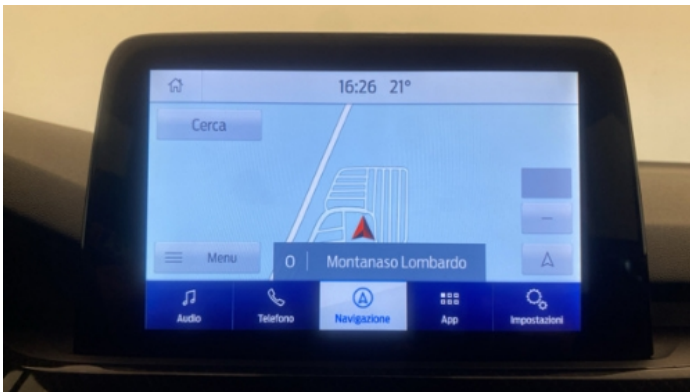
|                    |                       |                        |        |
|--------------------|-----------------------|------------------------|--------|
| Vehicle Condition  | Runner                | VAT Type               | Margin |
| Fuel Type          | Diesel                | Gearbox Type           | Manual |
| Colour             | Grey                  | Engine Size (cc)       | 1499   |
| Engine Size        | 1.5                   | No of Doors            | 5      |
| Body Type          | Stationwagon / Estate | Drive Train            | Front  |
| Seat Colour        | Black                 | No of Seats            | 5      |
| Seat Covering Name |                       | Seat Covering          | Cloth  |
| Charging Cables    |                       | NEDC CO2 Rating (q/km) | 93     |

### Vehicle History & Documents

|                        |            |                      |    |
|------------------------|------------|----------------------|----|
| Service Book Available | -          | Next Service Mileage | km |
| Previous Usage         | Normal Use | Imported             | No |
| Manufacturer Warrenty  |            |                      |    |







Equipment

|                         |                                  |                        |                                   |
|-------------------------|----------------------------------|------------------------|-----------------------------------|
| Central locking         | Rain sensitive windscreen wipers | Alloys wheels          | Electrically folding wing mirrors |
| Satellite navigation    | Parcel Shef                      | Remote central locking | Tyre Mobility Kit                 |
| Power assisted steering | Rear parking sensors             | Digital Radio          | Front parking sensors             |
| Volante multifuncion    | Remote adjusting wing mirrors    | Trip Computer          | Stability control                 |

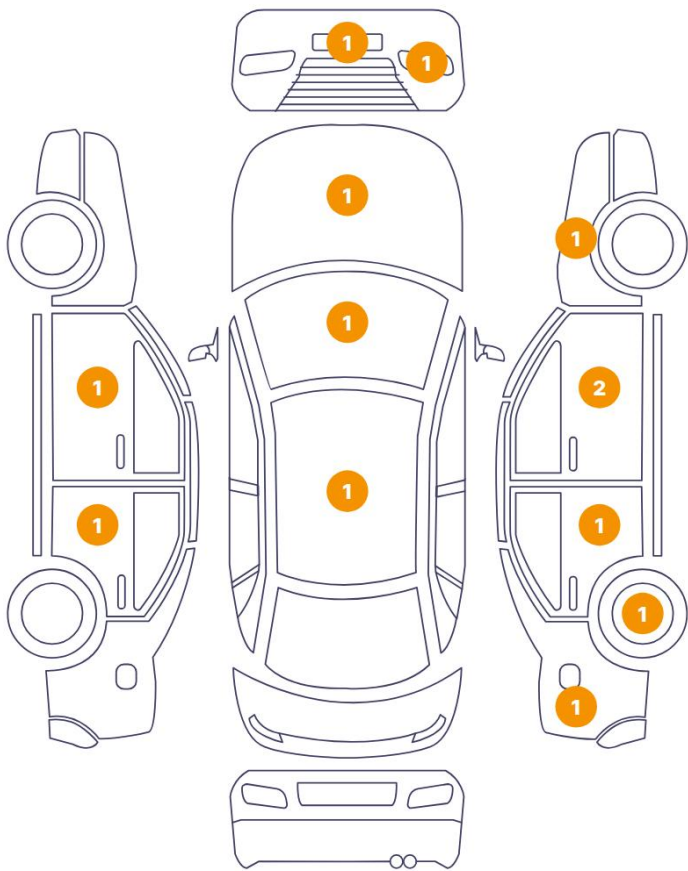
Wheels & Tyres

Mounted Tires

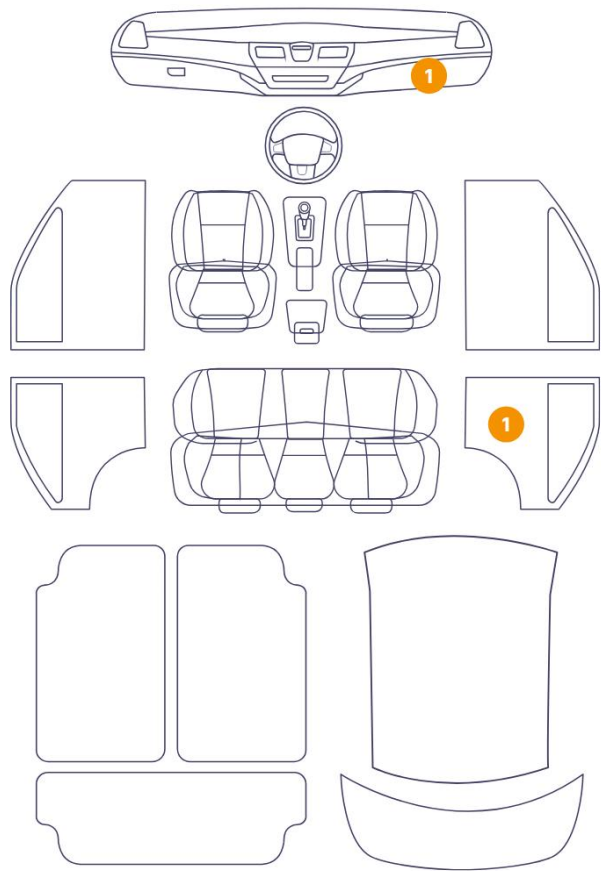
| Tyre / Wheel Type | Summer                       |                          |
|-------------------|------------------------------|--------------------------|
|                   | NEXEN NEXEN-N'FERA SPORT SUV | 215/50//R17 - 91W / 3 mm |
|                   | NEXEN NEXEN-N'FERA SPORT SUV | 215/50//R17 - 91W / 3 mm |
|                   | NEXEN NEXEN-N'FERA SPORT SUV | 215/50//R17 - 91W / 3 mm |
|                   | NEXEN NEXEN-N'FERA SPORT SUV | 215/50//R17 - 91W / 3 mm |

Cosmetic Damage

13 Danni



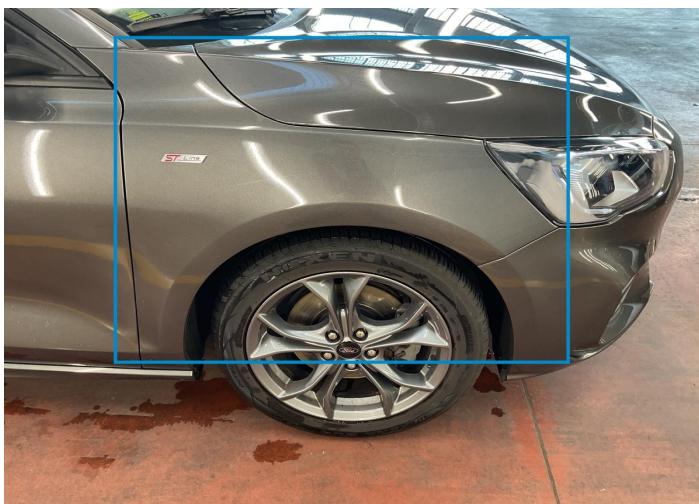
2 Danni



| Component |                           | Damage                          | Comments |
|-----------|---------------------------|---------------------------------|----------|
| 1         | Fender / Front Right      | Bodywork / Poor Previous Repair |          |
| 2         | Door / Front Right        | Bodywork / Poor Previous Repair |          |
| 3         | Door / Back Right         | Bodywork / Poor Previous Repair |          |
| 4         | Rim / Back Right          | Out of Bodywork / Scratch       |          |
| 5         | Fender / Back Right       | Bodywork / Poor Previous Repair |          |
| 6         | Pillar / Front Right      | Bodywork / Poor Previous Repair |          |
| 7         | Front Light / Front Right | Glass Break                     |          |
| 8         | Bumper / Front            | Bodywork / Poor Previous Repair |          |
| 9         | Hood                      | Paint / Chipping                |          |
| 10        | Windshield / Front        | Glass Break / Impact            |          |
| 11        | Door / Back Left          | Bodywork / Dent                 |          |
| 12        | Door / Front Left         | Paint / Scratch / Line          |          |

|    |                            |                                 |
|----|----------------------------|---------------------------------|
| 13 | Roof                       | Bodywork / Poor Previous Repair |
| 14 | Panel Filling / Back Right | Interior / Scratched            |
| 15 | Dashboard / Front          | Interior / Scratched            |

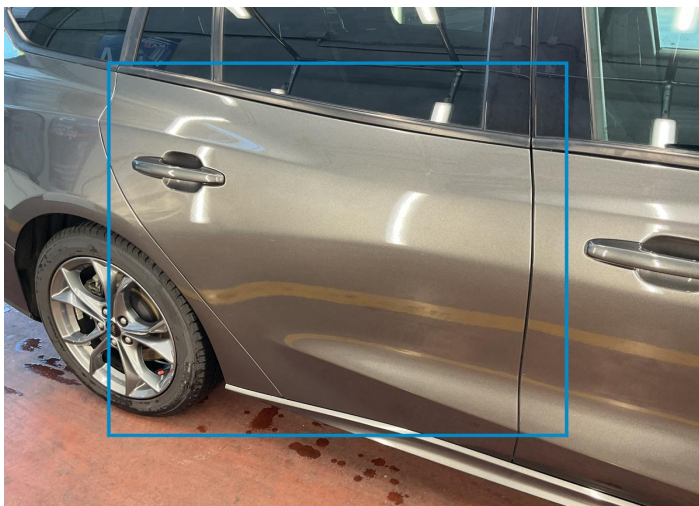




1. Fender / Front Right  
Bodywork / Poor Previous Repair -



2. Door / Front Right  
Bodywork / Poor Previous Repair -



3. Door / Back Right  
Bodywork / Poor Previous Repair -



4. Rim / Back Right  
Out of Bodywork / Scratch -



5. Fender / Back Right  
Bodywork / Poor Previous Repair -



6. Pillar / Front Right  
Bodywork / Poor Previous Repair -





7. Front Light / Front Right  
Glass Break -



8. Bumper / Front  
Bodywork / Poor Previous Repair -



9. Hood  
Paint / Chipping -



10. Windshield / Front  
Glass Break / Impact -

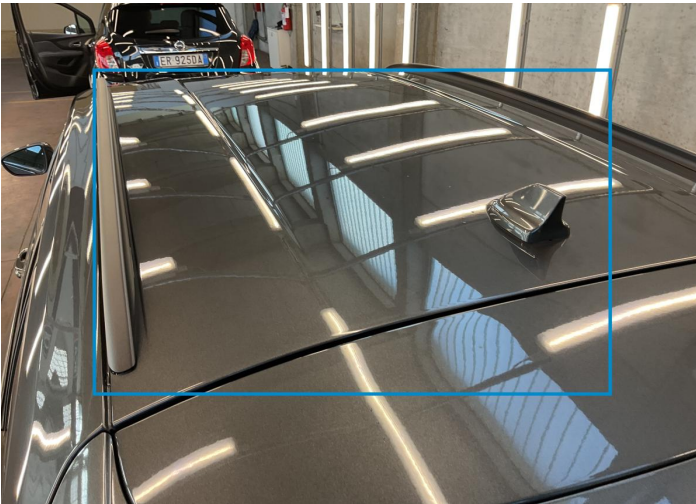


11. Door / Back Left  
Bodywork / Dent -



12. Door / Front Left  
Paint / Scratch / Line -





13. Roof  
Bodywork / Poor Previous Repair -



14. Panel Filling / Back Right  
Interior / Scratched -



15. Dashboard / Front  
Interior / Scratched -

## Mechanical Condition

| Engine              |   |                     |   |
|---------------------|---|---------------------|---|
| Vehicle Start - up  | ✓ | Engine Starts       | ✓ |
| Engine Leak Visible | ✓ |                     |   |
| Clutch              |   |                     |   |
| Clutch Functioning  | ✓ |                     |   |
| Equipments Test     |   |                     |   |
| Other Equipments    | ✓ | AC / Heating System | ✓ |
| Levels              |   |                     |   |
| Brakes Fluid        | ✓ | Coolant Fluid       | ✓ |

## Test Drive Inspection

| Other Checks               |   |               |   |
|----------------------------|---|---------------|---|
| Steering                   | ✓ | Brakes        | ✓ |
| Suspension                 | ✓ |               |   |
| Gearbox                    |   |               |   |
| Manual Gearbox             | ✓ |               |   |
| General                    |   |               |   |
| Test Driven Status         | ✓ |               |   |
| Equipments Test            |   |               |   |
| Steering   Noise / Anomaly | ✓ |               |   |
| Engine                     |   |               |   |
| Power Loss                 | ✓ | Fume Quantity | ✓ |
| Engine Noise               | ✓ |               |   |

✓ **No troubles detected, good condition or correct tests, according to vehicle age and mileage**

❗ **Damages or malfunction detected that requires repairs by the buyer**

NA **Not applicable**

☐ **Not tested**