



Expertise

Protocol number: 40863709  
Order No. / Reference: 25019797  
Inspection date: 1 Aug 2025

Manufacturer: Ford

Model: Focus 1.0 EcoBoost Start-Stopp-System TITANIUM

VIN: WF0NXXGCHNPL83875



Vehicle details	
Manufacturer / Type / Model / Equipment	
Ford Focus 1.0 EcoBoost Start-Stopp-System TITANIUM	
Vehicle Identification number	WF0NXXGCHNPL83875
Mileage (Read)	4,927 km
First registration	8 Jun 2023
Number of holders	1
Next periodical technical inspection	06/2026
(Report not on hand)	
Power / Engine displacement	92 kw / 999 ccm
Fuel type / Cylinder	Petrol / 3
Gearbox / Number of gears	Manual / 6
Type of drive	Front drive
Type of vehicle	Saloon car
Colour / colour code	Moondust Silber-Metallic
Doors / Seats	5 / 5
Upholstery type	Cloth
Colour of upholstery	Anthracite-Black



## Vehicle details

<b>Maintenance booklet / proof</b>	Non-existent	<b>Next maintenance in</b>	85 %
<b>Key is / should be</b>	2 / 2	<b>FZG documents</b>	ZB#2 (B) was available (copy), ZB#1 (S) was not available
		<b>Letter No.</b>	GT912937
<b>Previous damage / Accident</b>	None detectable	<b>Repainting</b>	None detectable
<b>Inspection conditions</b>	Sufficient	<b>Lifting equipment / pit</b>	yes
<b>Test drive</b>	Not performed	<b>Engine function test</b>	Performed
<b>Manufacturer key number/ type code number</b>	8566 / BPO 00638		
<b>Emission standard</b>	EURO6;WLTP;AP;PI/CI; M, N1 I	<b>Fine dust sticker</b>	
<b>Permitted total weight</b>	1,895 kg	<b>Empty weight</b>	

## Tyres

### Mounted tyres

#	Tyre size	Type of tyre	Manufacturer	Tread depth
1)	205/60 R16 92V	Summer tyres on Light alloy	Goodyear	5mm / 5mm
2)	205/60 R16 92V	Summer tyres on Light alloy	Goodyear	5mm / 5mm

### Additional tyres

#	Tyre size	Type of tyre	Manufacturer	Tread depth
1)	205/60 R16 96H	Winter tyres on Steel	Nokian	6mm / 6mm
2)	205/60 R16 96H	Winter tyres on Steel	Nokian	6mm / 6mm

### Replacement

Typ	Tyre size	Type of tyre	Manufacturer	Tread depth
N	125/70 R16 96M	Summer tyres on Steel	Hankook	4 mm

**Legend:** Tread depth information for tires on the left is in the first place, for tires on the right is in the second place on the axle in the direction of travel



## Equipment

### Standard equipment

- Airbag: Passenger airbag deactivation
- Exterior mirrors painted in body color, electrically adjustable, heated and foldable
- Hill start assist
- Roof spoiler painted in body color
- Electronic Safety and Stability Program (ESP)
- Lane Assistant including Lane Keeping Assist
- Electric windows front and rear
- Ford Power start function
- Luggage compartment cover
- Speed limiter
- Transmission: 6-speed manual transmission
- Back window, heater
- Interior lighting with LED technology
- Intelligent security system
- Air conditioning with automatic temperature control
- LED taillights
- Steering wheel: 3-spoke design
- Make-up mirrors in driver and passenger sun visors
- MyKey key system (individually programmable second key)
- Emergency Call Assistant
- Gasoline particulate filter
- Upholstery: Cloth
- Pre-Collision Assist
- Tire pressure monitoring system (TPMS)
- Windscreen wipers with rain sensor (sensitivity adjustable)
- Headlight assistant with day/night sensor
- Power steering electro-mechanical speed-dependent
- Seats: Driver's seat height adjustable
- Seats: Front sports seats with increased lateral support
- Carpet floor mats front
- Unfastened seat belt warning system for the 1st and 2nd row of seats
- Anti-lock braking system (ABS) with electronic brake-force distribution (EBD)
- Tires: 6.5 J x 16 design wheels (4) with 205/60 R16 tires
- Woven fabric headliner
- tachometer
- Driver information system with on-board computer, color (10.7 cm screen diagonal)
- Electric parking brake with auto-hold function
- FordPass Connect including live traffic information
- Luggage compartment lighting
- Cruise control system
- Glove compartment, illuminated
- Rear window wiper
- Interior mirror, automatically dimming
- Isofix mount
- Headrests 2 front and 3 rear, height adjustable
- LED headlights
- Steering column, adjustable
- Center console "Premium" front
- Navigation: Ford SYNC 4 including Ford navigation system with AppLink, 13.2" touchscreen and DAB/DAB+
- Parking pilot system front and rear
- Post-Collision Assist
- Tire repair kit
- Gear knob, Sensico in leather look
- Headlight dipped beam
- Selective driving mode switch
- Seats: Passenger seat height adjustable, manual
- Seats: Rear seat backrest
- Start-stop system
- Variable radiator air intake
- Electronic immobilizer
- Central locking with remote control and remote luggage compartment release

### Extra equipment

- Tires: 6.5 J x 16 alloy wheels (4) with 205/60 R16 tires (in 6x2-spoke design)
- Seats: Front seats individually and variably heated
- Paint finish: metallic
- Wheels: Spare wheel (permitted for use up to 80 km/h - steel wheel 3.5 J x 16 with 125/70 R16 tires)



## Brief expert findings

Documents submitted	At the time of the inspection, the registration certificate Part 2 (letter) was available, but the registration certificate Part 1 (certificate) was not. (Copy)
VIN comparison	The vehicle identification number (VIN) was read and the undersigned verified that it matched the documents submitted during the inspection.
Inspection	The inspection conditions were sufficient for the assessment of the vehicle. Lifting equipment and a pit were available for examining the vehicle.
Test drive	No test drive/maneuvering was carried out during the inspection of the vehicle.
Engine function test	An engine test run was performed.

## Value reducing factors

No.	Component group	Description
1	Misc.	Inspection / maintenance - No evidence - No deduction
2	Braking system	Brake fluid - No evidence - No deduction
3	Engine	Engine cover - top / cover - Missing - Replace
4	Wheel / tyres	Alloy rim - front right side - Scratched - Loss in value
5	Side panel - rear right side	Side panel - dent(s) - Smooth repair work

## Wear and tear

No.	Component group	Description
1	Front bumper	Front bumper (Kratzer) - Stone chips - No deduction
2	Rear bumper	Rear bumper - Scratched - No deduction
3	Bonnet	Bonnet (Kratzer) - Stone chips - No deduction
4	Vehicle glazing	Windscreen - Stone chips - No deduction
5	Door - front right side	Door handle - outside - Scratched - Cover / polish

The vehicle shows signs of wear commensurate with its age and use.

## Order/Scope of order

The order was placed to prepare a sales report for the vehicle described. This includes the following:

- Description of core relevant information about the vehicle
- Documentation of equipment features  
(*Delivery by third-party service providers*)
- Documentation of damage, defects, missing parts
- Documentation of previous damage, unrepaired previous damage, repainting
- a brief visual or functional inspection of the equipment details if possible.  
(*Functional tests of driver assistance systems are not included in the scope of services!*)
- a photo documentation of the vehicle



## Basis for the order

This product is based on the Alphabet Fuhrpark GmbH guidelines for vehicle returns and valuations. The expert makes the explicit findings in each individual case objectively within the framework of the specified standards based on his or her own expertise.

The vehicle inspection takes place in a disassembled state.

Damage or defects that can only be detected during disassembly/diagnosis work or through advanced knowledge remain within the scope of the prognosis risk. An extended risk exists for concealed defects caused by fraudulent deception and not identifiable by the expert.

Damage or defects resulting from normal use or wear and tear of the vehicle will be accepted according to the applicable standard.

There was no explicit identification or monetary consideration of the expected features within the product.

Features which in their nature and severity slightly exceed normal use but do not constitute unacceptable damage will be documented and identified under signs of use if necessary.

Damage or defects which, according to the underlying standard, can no longer be attributed to normal use or wear and tear are listed in the product under "Depreciating Factors".

Depending on the product specification, a monetary ID can be provided. If this takes place, the costs can be 100% d or pro rata depending on the vehicle's age and mileage.

## Previous damages

Apparently, no repaired previous damage could be found on the vehicle.





**Figure 1:** Diagonal front (left)



**Figure 2:** Diagonal front (right)



**Figure 3:** Diagonal rear (left)



**Figure 4:** Diagonal rear (right)



**Figure 5:** Interior - front



**Figure 6:** Interior - rear





Figure 7: Instrument cluster



Figure 8: Instrument panel



Figure 9: interior 360° view ([Online link](#))



Figure 10: Cargo area



Figure 11: VIN



Figure 12: Mounted tyres



Figure 13: Documents



Figure 14: Additional tyres



Figure 15: Navigation

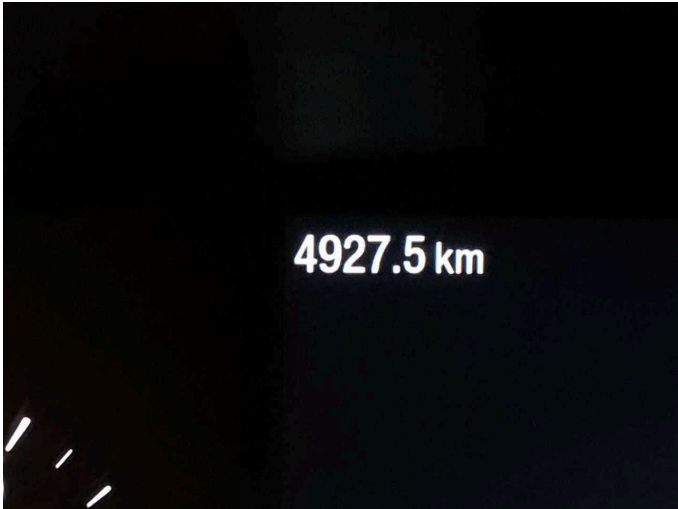


Figure 16: Misc.



Figure 17: Misc.



Figure 18: Misc.





Figure 19: Misc.

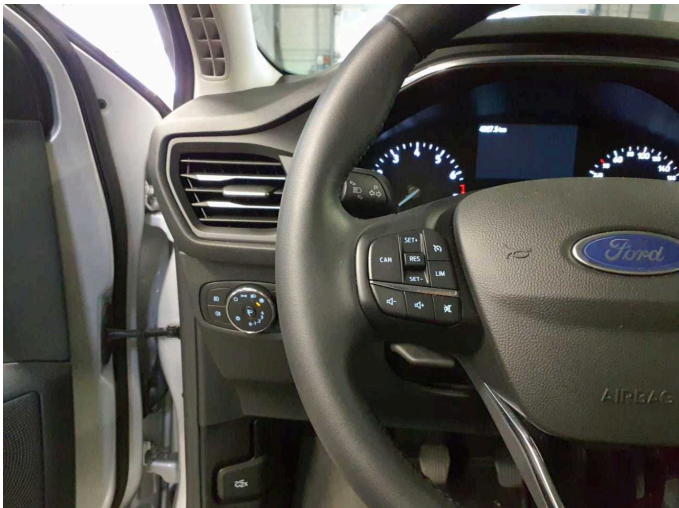


Figure 20: Misc.



Figure 21: Misc.

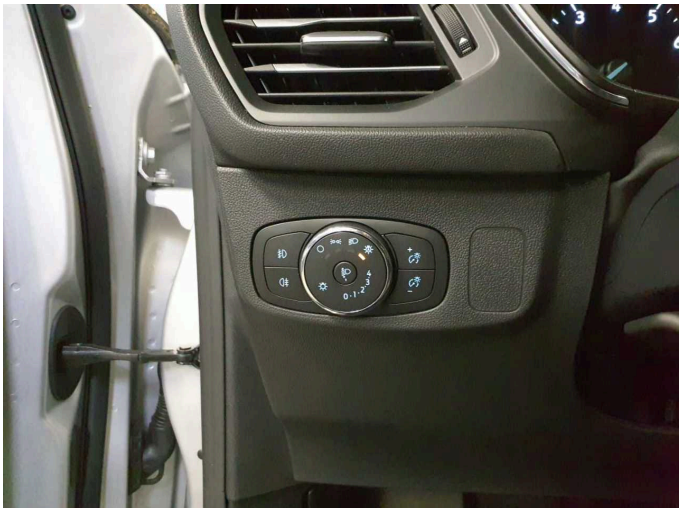


Figure 22: Misc.



Figure 23: Misc.



Figure 24: Misc.



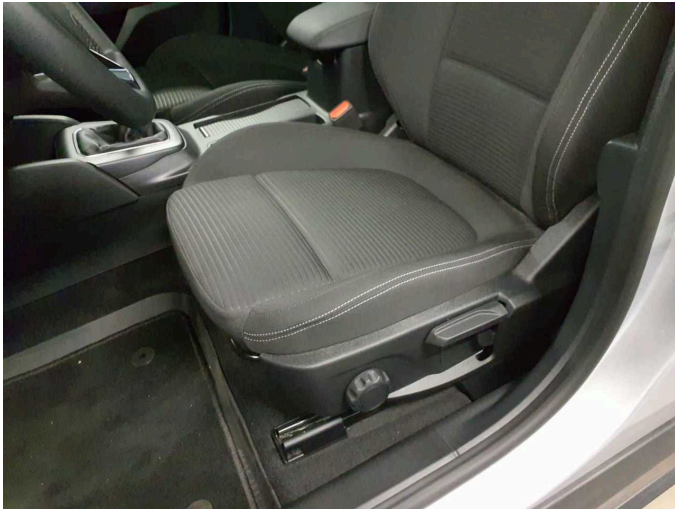


Figure 25: Misc.

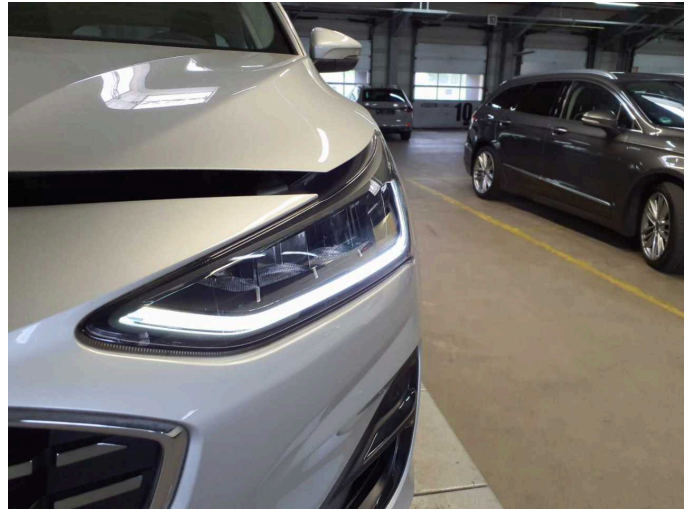


Figure 26: Misc.

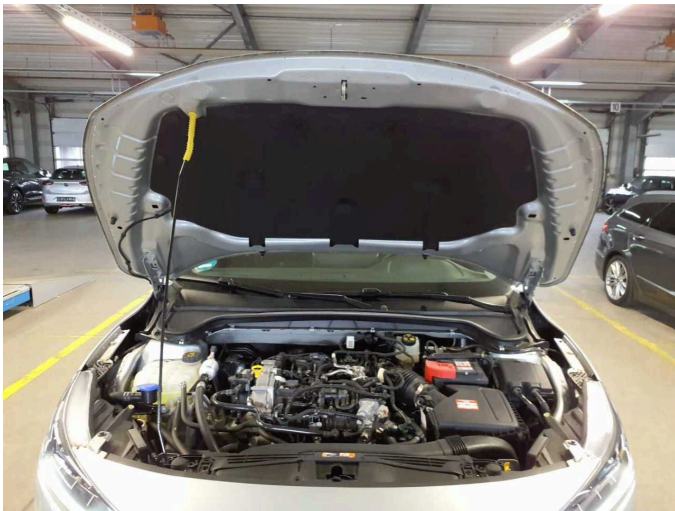


Figure 27: Misc.

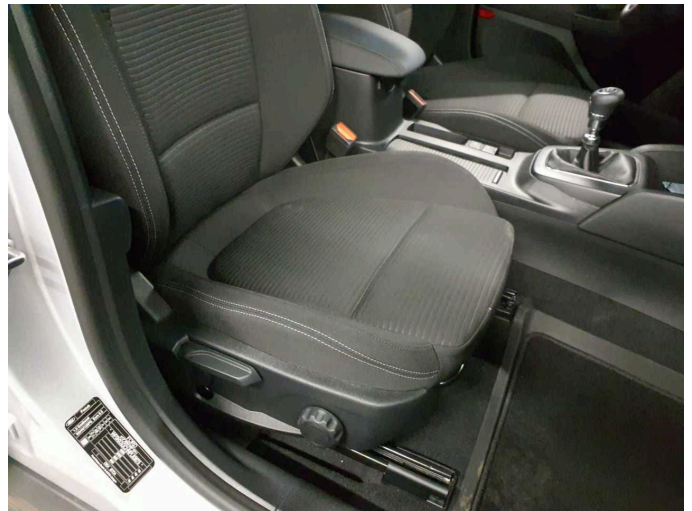


Figure 28: Misc.



Figure 29: Misc.

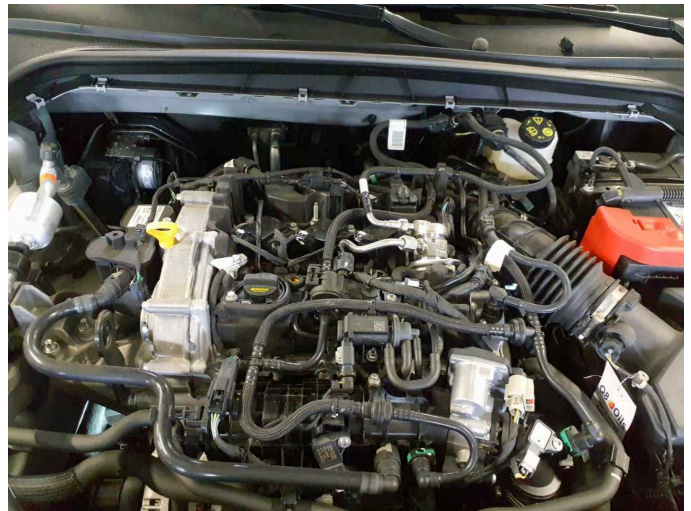


Figure 30: Misc.





**Figure 31:** Misc.



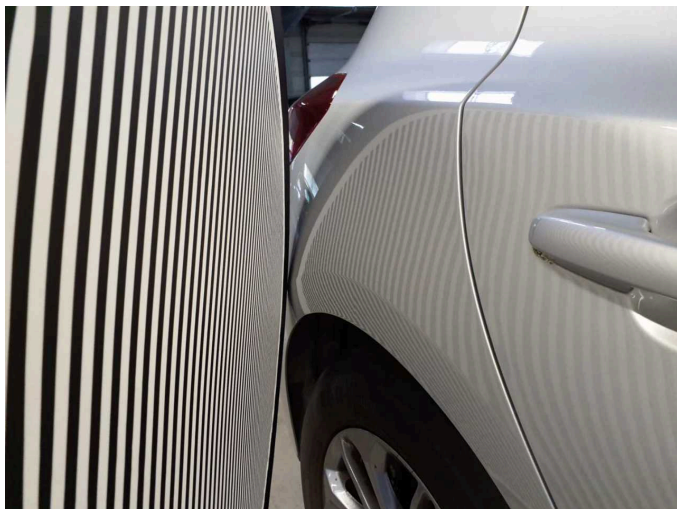
**Damage 3:** Engine: Engine cover - top / cover - Missing - Replace



**Damage 4:** Wheel / tyres: Alloy rim - front right side - Scratched - Loss in value



**Damage 4:** Wheel / tyres: Alloy rim - front right side - Scratched - Loss in value

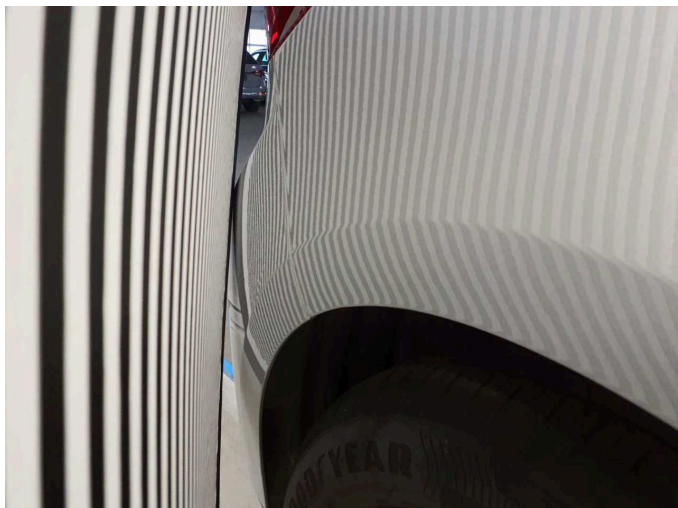


**Damage 5:** Side panel - rear right side: Side panel - dent(s) - Smooth repair work

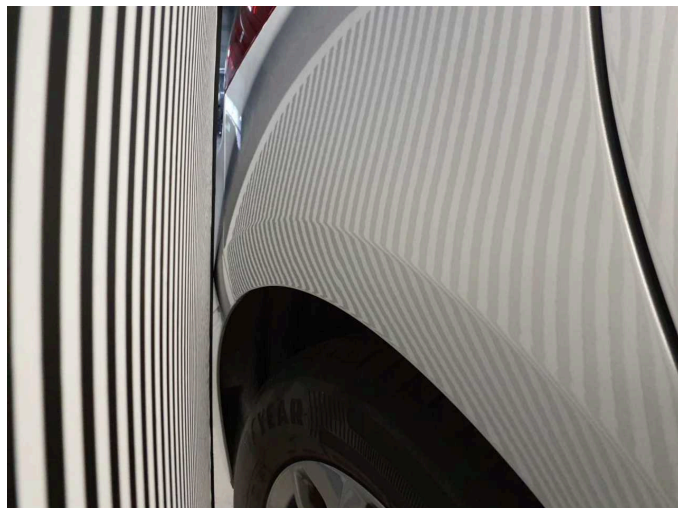


**Damage 5:** Side panel - rear right side: Side panel - dent(s) - Smooth repair work





**Damage 5:** Side panel - rear right side: Side panel - dent(s) - Smooth repair work



**Damage 5:** Side panel - rear right side: Side panel - dent(s) - Smooth repair work



**Wear and tear 5:** Door - front right side: Door handle - outside - Scratched - Cover / polish



**Wear and tear 5:** Door - front right side: Door handle - outside - Scratched - Cover / polish