



Expertise

Protocol number: 39433472
Order No. / Reference: 24586795
Inspection date: 22 Apr 2025

Manufacturer: Ford	Model: Focus 1.0 EcoBoost Hybrid TITANIUM STYLE
VIN: WF0NXXGCHNPK50035	



Vehicle details	
Manufacturer / Type / Model / Equipment	
Ford Focus 1.0 EcoBoost Hybrid TITANIUM STYLE	
Vehicle Identification number	WF0NXXGCHNPK50035
Mileage (Read)	4,346 km
First registration	21 Mar 2023
Number of holders	1
Power / Engine displacement	92 kw / 999 ccm
Fuel type / Cylinder	Hybrid Petrol / E / 3
Gearbox / Number of gears	Manual / 6
Type of drive	Front drive
Type of vehicle	Saloon car
Colour / colour code	Magnetic-Grau (Metallic)
Doors / Seats	5 / 5
Upholstery type	Cloth
Colour of upholstery	Anthracite-Black



Vehicle details

Maintenance booklet / proof	Available / incomplete	Next maintenance in	0 %
Key is / should be	2 / 2	FZG documents	ZB#2 (B) was available (copy), ZB#1 (S) was not available
		Letter No.	GT873564
Previous damage / Accident	None detectable	Repainting	None detectable
Inspection conditions	Sufficient	Lifting equipment / pit	yes
Test drive	Not performed	Engine function test	Performed
Manufacturer key number/ type code number	8566 / BUB 00137		
Emission standard	EURO6;WLTP;AP;PI/CI; M, N1 I	Fine dust sticker	
Permitted total weight	1,895 kg	Empty weight	

Tyres

Mounted tyres

#	Tyre size	Type of tyre	Manufacturer	Tread depth
1)	205/60 R16 92H	Winter tyres on Light alloy	Nexen	7mm / 7mm
2)	205/60 R16 92H	Winter tyres on Light alloy	Nexen	7mm / 7mm

Additional tyres

#	Tyre size	Type of tyre	Manufacturer	Tread depth
1)	205/60 R16 92V	Summer tyres on Light alloy	Goodyear	6mm / 6mm
2)	205/60 R16 92V	Summer tyres on Light alloy	Goodyear	6mm / 6mm

Replacement

Typ	Tyre size	Type of tyre	Manufacturer	Tread depth
	Tirefit	Expiration date 02/2027		

Legend: Tread depth information for tires on the left is in the first place, for tires on the right is in the second place on the axle in the direction of travel



Equipment

Standard equipment

- | | |
|---|---|
| <ul style="list-style-type: none"> • Airbag: Passenger airbag deactivation • Electrically folding exterior mirrors • Hill start assist • Roof spoiler painted in body color • Third brake light • Driver information system with on-board computer, color (10.7 cm screen diagonal) • Electric parking brake with auto-hold function • Ford EcoCoach • FordPass Connect including eCall and Wi-Fi hotspot • Speed limiter • Transmission: 6-speed manual transmission • Back window, heater • Interior lighting with LED technology • Intelligent security system • Air conditioning with automatic temperature control • radiator grille in titanium design • LED taillights • Leather gear knob • Steering wheel: Steering column, adjustable in height and reach • MyKey key system (individually programmable second key) • Emergency brake light • Gasoline particulate filter • Upholstery: Cloth • Pre-Collision Assist • Tire pressure monitoring system (TPMS) • Windscreen wipers with rain sensor • Headlight assistant with day/night sensor • Power steering electro-mechanical speed-dependent • Seats: Driver and passenger seat backrests with map grid • Seats: Driver's seat with adjustable lumbar support • Start-stop system • Variable radiator air intake • Immobiliser • Central locking with remote control and remote luggage compartment release | <ul style="list-style-type: none"> • Anti-lock braking system (ABS) with electronic brake-force distribution (EBD) • Woven fabric headliner • tachometer • Electronic Safety and Stability Program (ESP) • Lane Assistant including Lane Keeping Assist • Electric windows front and rear • Ford Easy Fuel • Ford Power start function • Luggage compartment cover • Cruise control system • Glove compartment, illuminated • Rear window wiper • Interior mirror automatically dimming • Isofix mount • Headrests (5) • Paint finish: Uni • LED headlights • Steering wheel: 3-spoke design • Make-up mirrors in driver and passenger sun visors • Center console "Premium" front • Navigation: Ford SYNC 3 with AppLink, 8" touchscreen and DAB/DAB+ • Parking pilot system front and rear • Post-Collision Assist • Tire repair kit • Rear seat backrest, foldable, 60:40 split • Headlight dipped beam • Selective driving mode switch • Seats: Passenger seat, 2-way adjustable • Seats: Driver's seat manually height adjustable • Seats: Front sports seats • Carpet floor mats front • Unfastened seat belt warning system for the 1st and 2nd row of seats |
|---|---|

Extra equipment

- | | |
|--|--|
| <ul style="list-style-type: none"> • Package: Easy-Parking (Active Parking Assistant with parking and exit function (in conjunction with 8-speed automatic including partially automated vehicle guidance) - door edge protection - rear view camera with "Split View" technology) • Package: Winter (heated windscreen - heated steering wheel - front seats, individually and variably heated) | <ul style="list-style-type: none"> • Floor mats • Package: Driver Assistance Package I (Intelligent Cruise Control, Adaptive (iACC), Traffic Sign Recognition System, Wrong-Way Driver Warning Function, Evasive Collision Avoidance Assist (ESA), Distance Display and Distance Warning, Fatigue Warning, High Beam Assist, Blind Spot Assist with Cross Traffic Alert including Emergency Braking Function (when reversing out of a parking space) and Trailer Detection, Rear View Camera with Split View Technology) |
|--|--|



- | | |
|---|---|
| <ul style="list-style-type: none"> • Seats: Ford ergonomic seat (driver and passenger seat, 18-way adjustable: - position, height and inclination of the backrest and the seat surface manually adjustable (in conjunction with EcoBoost Hybrid - passenger seat, 2-way adjustable) - thigh support, manually extendable - lumbar support, 4-way electrically adjustable - headrest, 4-way adjustable) | <ul style="list-style-type: none"> • Paintwork: Special metallic paintwork • Tires: 6.5 J x 16 alloy wheels (4) with 205/60 R16 tires (in 6x2-spoke design) • winter complete wheels |
|---|---|

Brief expert findings

Documents submitted	At the time of the inspection, the registration certificate part 2 (letter) was available, but the registration certificate part 1 (certificate) was not available. (Copy)
VIN comparison	The vehicle identification number (VIN) was read and the undersigned verified that it matched the documents submitted during the inspection.
Inspection	The inspection conditions were sufficient to assess the vehicle. The inspection was carried out using the lighting conditions provided by the photo system included in the report. Lifting equipment and a pit were available for examining the vehicle.
Test drive	No test drive/maneuvering was carried out during the inspection of the vehicle.
Engine function test	An engine test run was performed.

Value reducing factors

No.	Component group	Description
1	Engine	Engine cover - top / cover - Missing - Replace
2	Misc.	Inspection / maintenance - Due - Perform

Order/Scope of order

The order was placed to prepare a sales report for the vehicle described. This includes the following:

- Description of core relevant information about the vehicle
- Documentation of equipment features
(*Delivery by third-party service providers*)
- Documentation of damage, defects, missing parts
- Documentation of previous damage, unrepaired previous damage, repainting
- a brief visual or functional inspection of the equipment details if possible.
(*Functional tests of driver assistance systems are not included in the scope of services!*)
- a photo documentation of the vehicle



Basis for the order

This product is based on the Alphabet Fuhrpark GmbH guidelines for vehicle returns and valuations. The expert makes the explicit findings in each individual case objectively within the framework of the specified standards based on his or her own expertise.

The vehicle inspection takes place in a disassembled state.

Damage or defects that can only be detected during disassembly/diagnosis work or through advanced knowledge remain within the scope of the prognosis risk. An extended risk exists for concealed defects caused by fraudulent deception and not identifiable by the expert.

Damage or defects resulting from normal use or wear and tear of the vehicle will be accepted according to the applicable standard.

There was no explicit identification or monetary consideration of the expected features within the product.

Features which in their nature and severity slightly exceed normal use but do not constitute unacceptable damage will be documented and identified under signs of use if necessary.

Damage or defects which, according to the underlying standard, can no longer be attributed to normal use or wear and tear are listed in the product under "Depreciating Factors".

Depending on the product specification, a monetary ID can be provided. If this takes place, the costs can be 100% d or pro rata depending on the vehicle's age and mileage.

Previous damages

Neither repaired nor non-repaired previous damage to the vehicle could be determined.



Figure 1: Diagonal front (left)



Figure 2: Diagonal front (right)



Figure 3: Diagonal rear (left)



Figure 4: Diagonal rear (right)



Figure 5: Interior - front



Figure 6: Interior - rear



Figure 7: Instrument cluster



Figure 8: Instrument panel



Figure 9: interior 360° view ([Online Link](#))



Figure 10: Cargo area



Figure 11: VIN



Figure 12: Mounted tyres



Figure 13: Documents

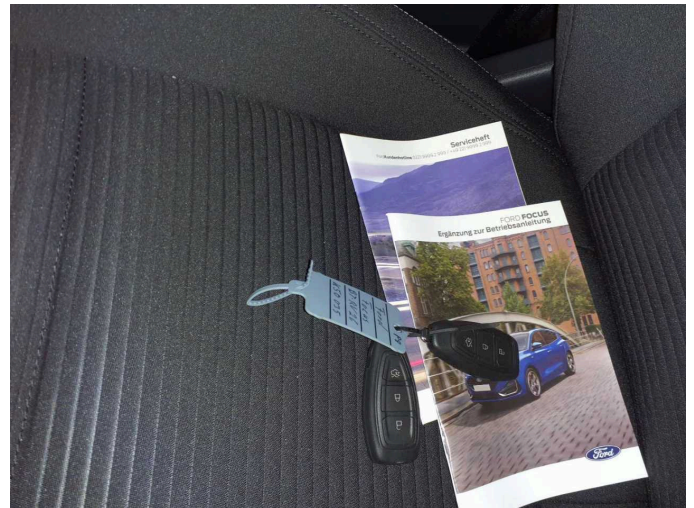


Figure 14: Documents

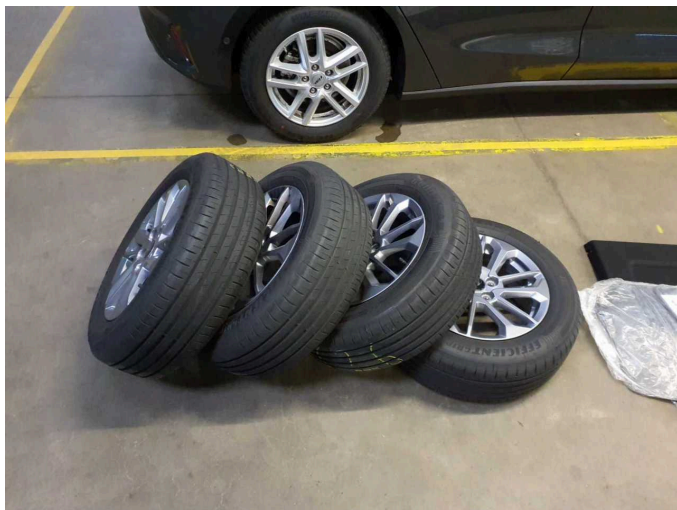


Figure 15: Additional tyres

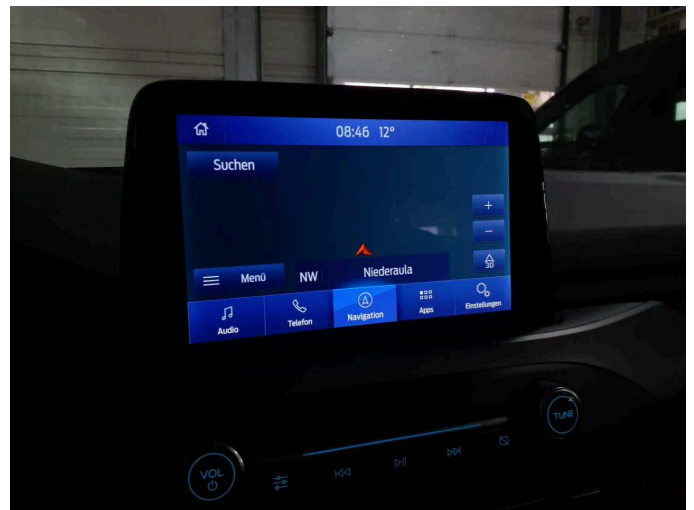


Figure 16: Navigation

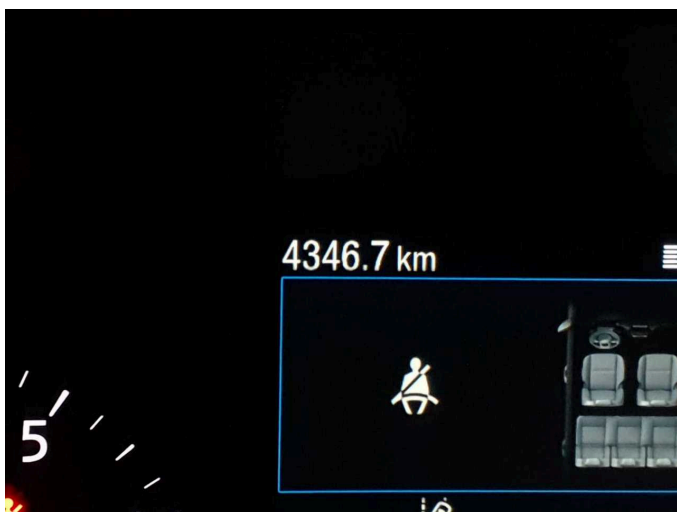


Figure 17: Misc.



Figure 18: Misc.



Figure 19: Misc.



Figure 20: Misc.



Figure 21: Misc.



Figure 22: Misc.



Figure 23: Misc.



Figure 24: Misc.



Figure 25: Misc.

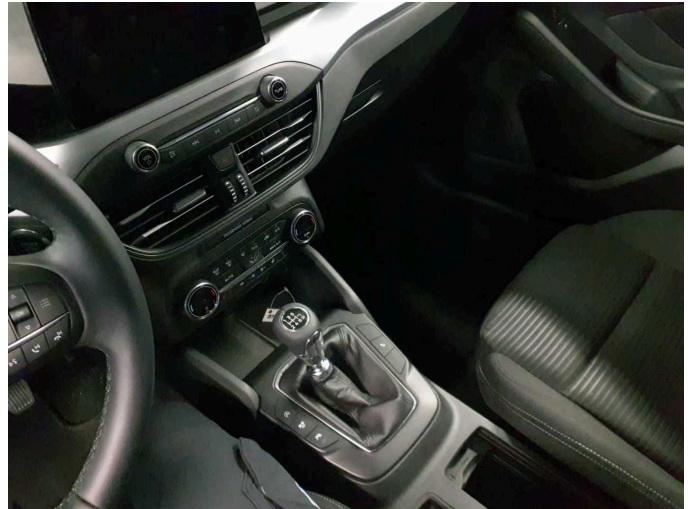


Figure 26: Misc.

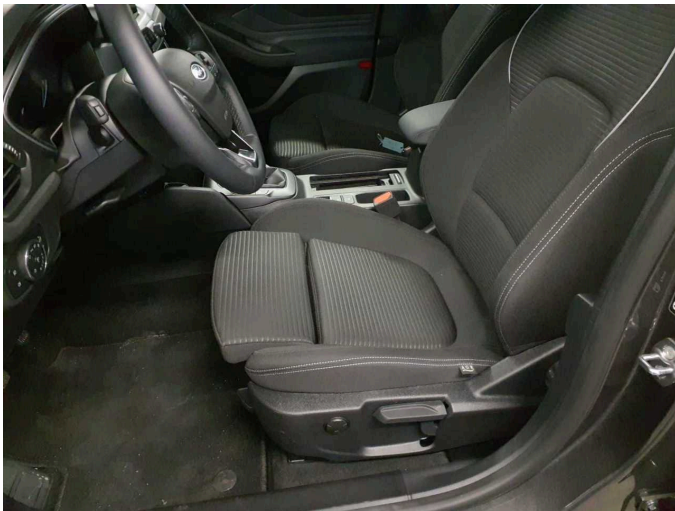


Figure 27: Misc.



Figure 28: Misc.

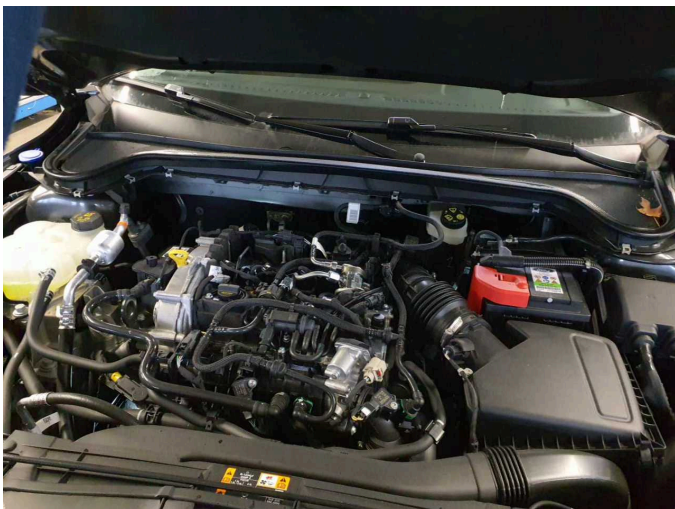


Figure 29: Misc.



Figure 30: Misc.



Figure 31: Misc.



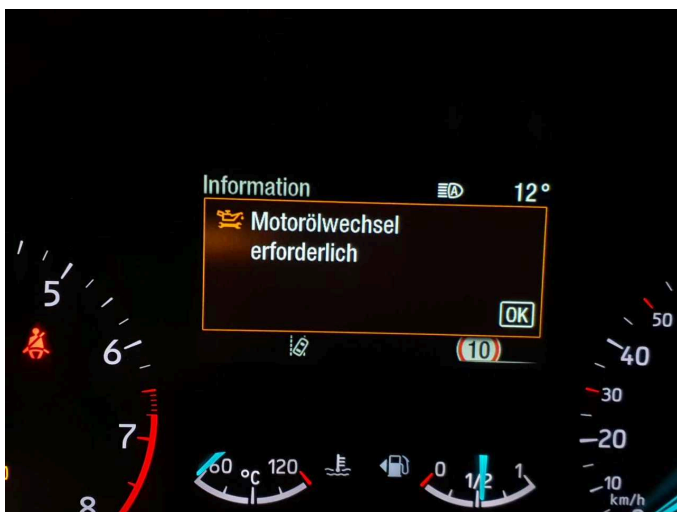
Figure 32: Misc.



Damage 1: Engine: Engine cover - top / cover - Missing - Replace



Damage 2: Misc.: Inspection / maintenance - Due - Perform



Damage 2: Misc.: Inspection / maintenance - Due - Perform