



Expertise

Protocol number: 39604194
Order No. / Reference: 24635864
Inspection date: 2 May 2025

Manufacturer: Ford	Model: Focus 2.3 EcoBoost S&S ST mit Styling-Paket
VIN: WF0NXXGCHNNL20036	



Vehicle details	
Manufacturer / Type / Model / Equipment	
Ford Focus 2.3 EcoBoost S&S ST mit Styling-Paket	
Vehicle Identification number	WF0NXXGCHNNL20036
Mileage (Read)	50,118 km
First registration	7 Feb 2022
Number of holders	1
Power / Engine displacement	206 kw / 2,261 ccm
Fuel type / Cylinder	Petrol / 4
Gearbox / Number of gears	Manual / 6
Type of drive	Front drive
Type of vehicle	Saloon car
Colour / colour code	Performance-Blau Metallic
Doors / Seats	5 / 5
Upholstery type	Alcantara / Leather
Colour of upholstery	Black



Vehicle details

Maintenance booklet / proof	digital proof / complete	Next maintenance in	86 %
Last maintenance on / at	03/2025 at 49,583 km		
Key is / should be	2 / 2	FZG documents	ZB#2 (B) was available (copy), ZB#1 (S) was not available
		Letter No.	GH409784
Previous damage / Accident	None detectable	Repainting	None detectable
Inspection conditions	Sufficient	Lifting equipment / pit	yes
Test drive	Not performed	Engine function test	Performed
Manufacturer key number/ type code number	8566 / BQZ 00087		
Emission standard	EURO6;WLTP;AP;PI/CI; M, N1 I	Fine dust sticker	
Permitted total weight	2,000 kg	Empty weight	

Tyres

Mounted tyres

#	Tyre size	Type of tyre	Manufacturer	Tread depth
1)	235/35 R19 91Y	Summer tyres on Light alloy	Michelin	5mm / 5mm
2)	235/35 R19 91Y	Summer tyres on Light alloy	Michelin	6mm / 6mm

Additional tyres

#	Tyre size	Type of tyre	Manufacturer	Tread depth
1)	215/50 R17 91H	Winter tyres on Light alloy	Dunlop	8mm / 8mm
2)	215/50 R17 91H	Winter tyres on Light alloy	Dunlop	8mm / 8mm

Replacement

Typ	Tyre size	Type of tyre	Manufacturer	Tread depth
	Tirefit	Expiration date 12/2025		

Legend: Tread depth information for tires on the left is in the first place, for tires on the right is in the second place on the axle in the direction of travel



Equipment

Standard equipment

- Airbag: Passenger airbag deactivation
- Exterior mirrors, painted in body color, electrically adjustable, heated, and foldable
- brake calipers, painted red
- roof spoiler, large, in ST design
- Digital instrument panel 12.3" (31.2 cm screen diagonal)
- tachometer
- Front door sill trims, "Ford Performance" design
- Driving mode switch, selective
- Chassis: ST sports suspension
- Electric parking brake with auto-hold function
- FordPass Connect including eCall, Live Traffic Information (only with navigation) and Wi-Fi hotspot
- Cruise control system
- Glove compartment, illuminated
- Rear window wiper
- Interior mirror, automatically dimming
- Intelligent speed limiter with speed limit display
- Isofix mount
- Headrests 2 front and 3 rear, height adjustable
- LED fog lights
- Steering column, adjustable
- Armrest - centre, rear
- "Premium" front center console
- Navigation: Ford Navigation including Ford SYNC 3 with AppLink, 8" touchscreen and DAB/DAB+
- Parking pilot system front and rear
- Pollen and dust filter
- Pre-Collision Assist
- Tire pressure monitoring system (TPMS)
- Windscreen wipers with rain sensor
- Side windows from 2nd row and rear window, dark tinted
- Seats: Recaro sports seats in the front with leather-fabric upholstery "Dinamica"
- ST body styling kit
- Carpet floor mats front and rear in ST design
- front axle limited-slip differential, electronic (eLSD)
- Immobiliser
- Central locking with remote control
- Anti-lock braking system (ABS) with electronic brake-force distribution (EBD)
- Tires: 8 J x 19 alloy wheels (4) with 235/35 R 19
- headliner made of woven fabric, black
- Anti-theft alarm system with interior monitoring and double locking
- Third brake light
- Electronic Safety and Stability Program (ESP)
- Lane Assistant including Lane Keeping Assist
- Electric windows front and rear
- Ford Power start function
- Luggage compartment cover and luggage compartment lighting
- Transmission: 6-speed manual transmission
- Back window, heater
- Interior lighting with LED technology
- Instrument lighting, adjustable
- Intelligent security system
- Air conditioning with automatic temperature control
- Grille, ST design
- Steering wheel: leather steering wheel
- Make-up mirrors in driver and passenger sun visors, illuminated
- MyKey key system (individually programmable second key)
- Emergency brake light
- Gasoline particulate filter
- Pedals with aluminum pads
- Post-Collision Assist
- Tire repair kit
- Rear view camera
- Headlight assistant with day/night sensor
- Power steering electro-mechanical speed-dependent
- Seats: Rear seat backrest
- Seats: Front seats individually and variably heated
- Start-stop system
- Electric child safety lock
- Unfastened seat belt warning system for the 1st and 2nd row of seats

Extra equipment

- Paint: Performance Blue Metallic
- Adaptive LED headlights with glare-free high beam assist and camera-based cornering lights (intelligent light cone, camera-controlled - automatic headlight range control - sequential LED indicators, front)
- Package: Winter (ST with Styling Package) (Heated windscreen - Heated steering wheel)



- Package: Performance (2.3 EcoBoost Sedan) (Additional driving mode: Racetrack - Ambient lighting in the front - Red-painted brake calipers - ST Performance gearshift indicator - ST Launch Control - Double-declutching function - Interactive chassis system with electronic damper control (CCD) and pothole detection function - also individually adjustable via the driving mode switch)
- Panoramic sliding sunroof, electric (including roof console with glasses storage compartment)

Brief expert findings

Documents submitted	At the time of the inspection, the registration certificate part 2 (letter) was available, but the registration certificate part 1 (certificate) was not available. (Copy)
VIN comparison	The vehicle identification number (VIN) was read and the undersigned verified that it matched the documents submitted during the inspection.
Inspection	The inspection conditions were sufficient for the assessment of the vehicle. Lifting equipment and a pit were available for examining the vehicle.
Test drive	No test drive/maneuvering was carried out during the inspection of the vehicle.
Engine function test	An engine test run was performed.

Value reducing factors

No.	Component group	Description
1	Front bumper	Front bumper - Scratched - Smart repair
2	Wheel / tyres	Alloy rim - rear left side - Scratch(es) - Loss in value
3	Wheel / tyres	Alloy rim - front right side - Scratched - Loss in value
4	Rear bumper	Rear bumper - Scratched - Paint

Order/Scope of order

The order was placed to prepare a sales report for the vehicle described. This includes the following:

- Description of core relevant information about the vehicle
- Documentation of equipment features
(Delivery by third-party service providers)
- Documentation of damage, defects, missing parts
- Documentation of previous damage, unrepaired previous damage, repainting
- a brief visual or functional inspection of the equipment details if possible.
(Functional tests of driver assistance systems are not included in the scope of services!)
- a photo documentation of the vehicle



Basis for the order

This product is based on the Alphabet Fuhrpark GmbH guidelines for vehicle returns and valuations. The expert makes the explicit findings in each individual case objectively within the framework of the specified standards based on his or her own expertise.

The vehicle inspection takes place in a disassembled state.

Damage or defects that can only be detected during disassembly/diagnosis work or through advanced knowledge remain within the scope of the prognosis risk. An extended risk exists for concealed defects caused by fraudulent deception and not identifiable by the expert.

Damage or defects resulting from normal use or wear and tear of the vehicle will be accepted according to the applicable standard.

There was no explicit identification or monetary consideration of the expected features within the product.

Features which in their nature and severity slightly exceed normal use but do not constitute unacceptable damage will be documented and identified under signs of use if necessary.

Damage or defects which, according to the underlying standard, can no longer be attributed to normal use or wear and tear are listed in the product under "Depreciating Factors".

Depending on the product specification, a monetary ID can be provided. If this takes place, the costs can be 100% d or pro rata depending on the vehicle's age and mileage.

Previous damages

Apparently, no repaired previous damage could be found on the vehicle.

Comments

- Der 2.Radsatz gehört nicht zur Ausstattung und wurde nicht in der Bewertung berücksichtigt.



Figure 1: Diagonal front (left)



Figure 2: Diagonal front (right)



Figure 3: Diagonal rear (left)



Figure 4: Diagonal rear (right)



Figure 5: Interior - front



Figure 6: Interior - rear



Figure 7: Instrument cluster



Figure 8: Instrument panel



Figure 9: interior 360° view



Figure 10: Cargo area



Figure 11: VIN



Figure 12: Mounted tyres



Figure 13: Documents

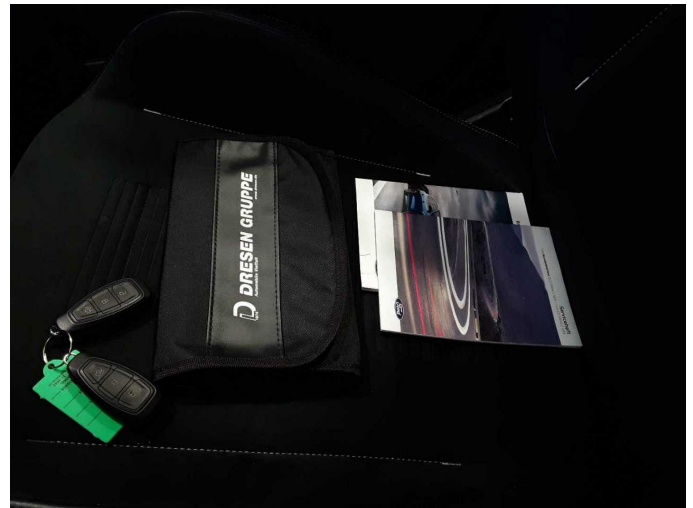


Figure 14: Documents



Figure 15: Documents



Figure 16: Additional tyres

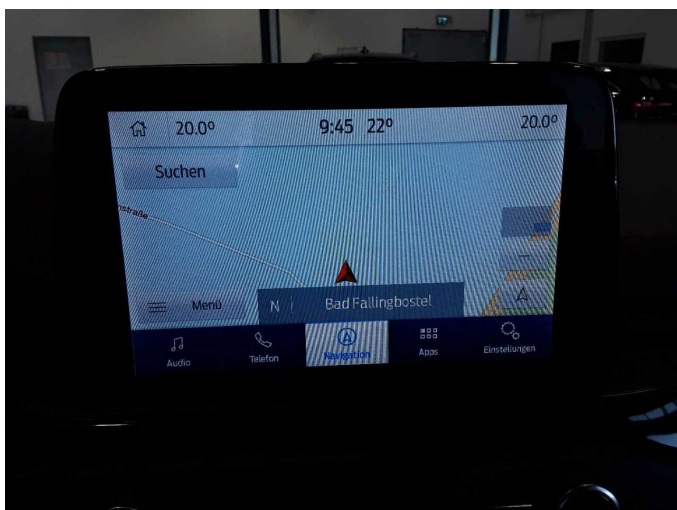


Figure 17: Navigation



Figure 18: Misc.



Figure 19: Misc.

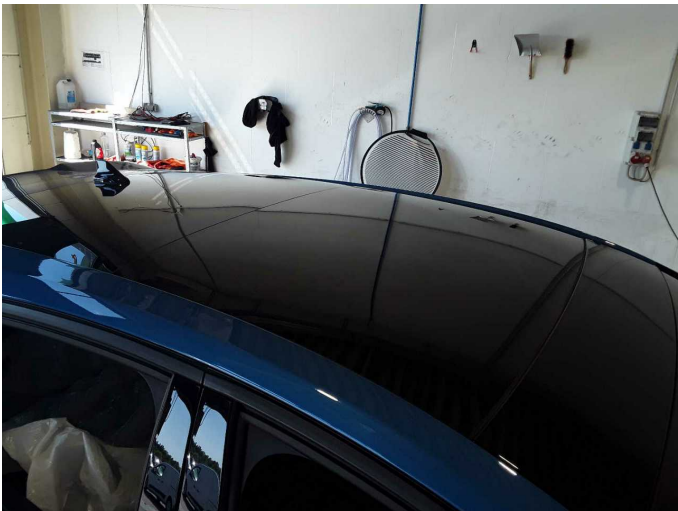


Figure 20: Misc.



Figure 21: Misc.



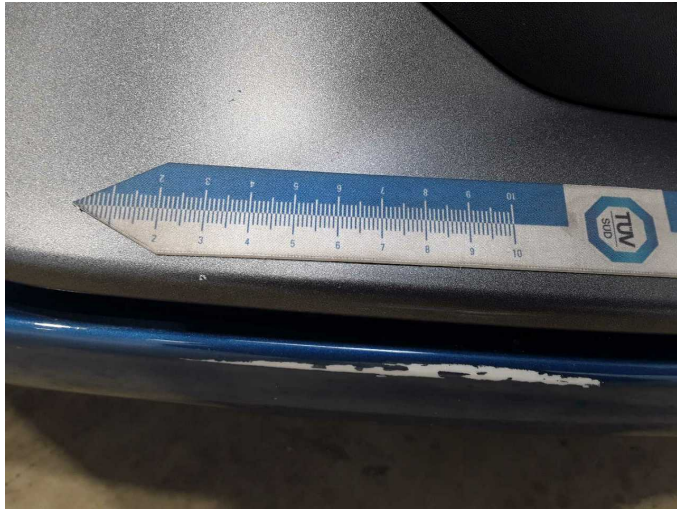
Figure 22: Misc.



Figure 23: Misc.



Damage 1: Front bumper: Front bumper - Scratched - Smart repair



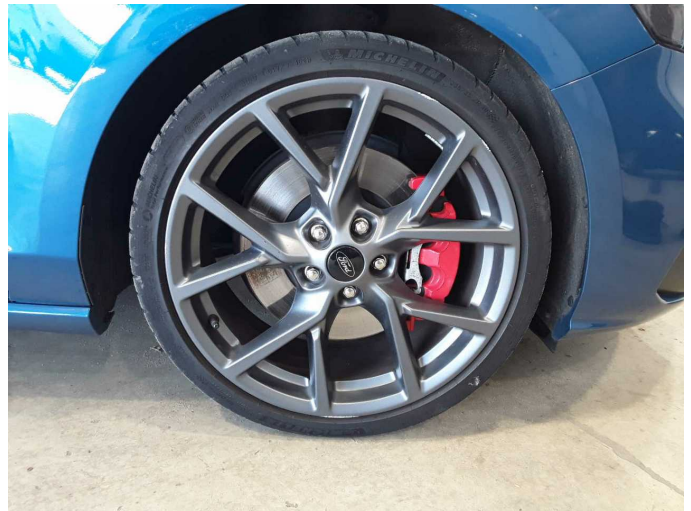
Damage 1: Front bumper: Front bumper - Scratched - Smart repair



Damage 2: Wheel / tyres: Alloy rim - rear left side - Scratch(es) - Loss in value



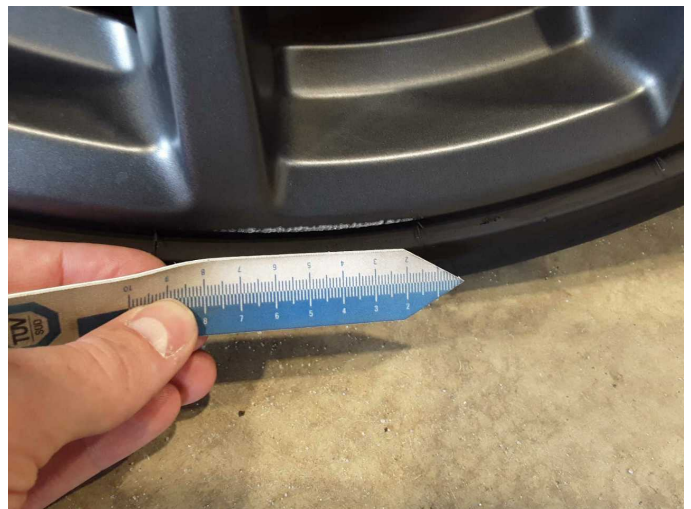
Damage 2: Wheel / tyres: Alloy rim - rear left side - Scratch(es) - Loss in value



Damage 3: Wheel / tyres: Alloy rim - front right side - Scratched - Loss in value



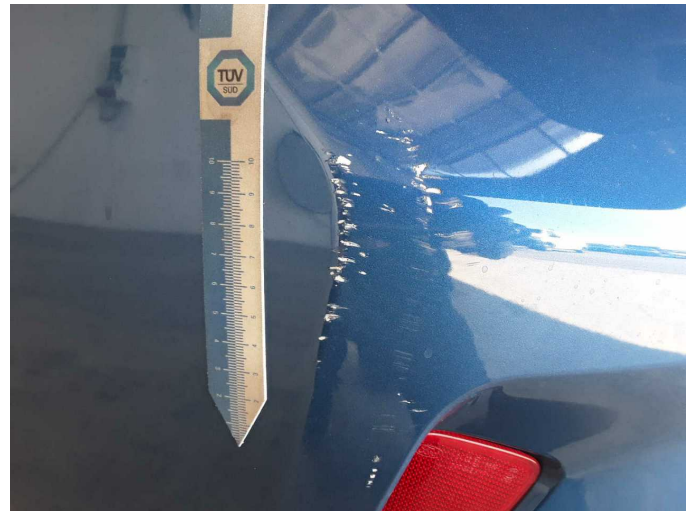
Damage 3: Wheel / tyres: Alloy rim - front right side - Scratched - Loss in value



Damage 3: Wheel / tyres: Alloy rim - front right side - Scratched - Loss in value



Damage 4: Rear bumper: Rear bumper - Scratched - Paint



Damage 4: Rear bumper: Rear bumper - Scratched - Paint