



Expertise

Protocol number: 41445974
Order No. / Reference: 25089216
Inspection date: 9 Sept 2025

Manufacturer: Ford

Model: Galaxy 2.0 EcoBlue S&S TITANIUM

VIN: WF0KXXWPCKLK65310



Vehicle details	
Manufacturer / Type / Model / Equipment	
Ford Galaxy 2.0 EcoBlue S&S TITANIUM	
Vehicle Identification number	WF0KXXWPCKLK65310
Mileage (Read)	97,718 km
First registration	5 Aug 2020
Number of holders	1
Next periodical technical inspection	12/2025
(Report on hand)	
Power / Engine displacement	110 kw / 1,995 ccm
Fuel type / Cylinder	Diesel / 4
Gearbox / Number of gears	Automatic / 8
Type of drive	Front drive
Type of vehicle	Van
Colour / colour code	Blazer-Blau
Doors / Seats	5 / 7
Upholstery type	Cloth
Colour of upholstery	Anthracite
Vehicle with smoke odor	no



Vehicle details

Maintenance booklet / proof	digital proof / complete	Next maintenance in	22,300 km
Last maintenance on / at	04/2025 at 90,981 km		
Key is / should be	2 / 2	FZG documents	ZB#2 (B) was available (copy), ZB#1 (S) was not available
		Letter No.	FV079205
Previous damage / Accident	None detectable	Repainting	None detectable
Inspection conditions	sufficient	Lifting equipment / pit	yes
Test drive	Not performed	Engine function test	Performed
Manufacturer key number/ type code number	8566 / BKM 00903		
Emission standard	EURO6;WLTP;DG;PI/CI; M, N1 I	Fine dust sticker	
Permitted total weight	2,510 kg	Empty weight	

Tyres

Mounted tyres

#	Tyre size	Type of tyre	Manufacturer	Tread depth
1)	235/55 R17 103Y	Summer tyres on Light alloy	Pirelli	6mm / 6mm
2)	235/55 R17 103Y	Summer tyres on Light alloy	Pirelli	6mm / 6mm

Additional tyres

#	Tyre size	Type of tyre	Manufacturer	Tread depth
1)	235/55 R17 103V	Winter tyres on Light alloy	Goodyear	6mm / 6mm
2)	235/55 R17 103V	Winter tyres on Light alloy	Goodyear	6mm / 6mm

Replacement

Typ	Tyre size	Type of tyre	Manufacturer	Tread depth
	Tirefit	Expiration date 06/2024		

Legend: Tread depth information for tires on the left is in the first place, for tires on the right is in the second place on the axle in the direction of travel

Equipment

Standard equipment

- Airbag: Passenger airbag deactivation
- Anti-lock braking system (ABS) (with Electronic Stability Program (ESP), Rollover Protection (RSC) and Traction Control (TCS))
- Attachment points for safety partition grilles (attachment points 1st row of seats)
- Tires: 7.5 J x 17 alloy wheels (4) with 235/55 R 17 tires (5x2-spoke design)
- Brake light, third
- Diesel particulate filter (DPF)
- Driver information system display 25.4 cm color (on-board computer with fuel consumption and mileage information as well as outside temperature display)
- Electric front and rear windows (with overall closing function)
- Parking brake, electronic
- Ford Power start function (keyless starting, including two passive keys with remote control)
- Removable luggage compartment cover
- Luggage compartment lighting
- Cruise control with intelligent speed limiter (interior mirror, automatically dimming - traffic sign recognition system)
- Transmission: 6-speed manual transmission
- Back window, heater
- Rear window wiper
- Intelligent Safety System (IPS Intelligent Protection System including: - Front airbag for driver and front passenger - Knee airbag for driver - Head-shoulder airbags in the front and for the 2nd and 3rd rows - Side airbags for driver and front passenger - Side airbags on the outer seats of the 2nd row - Seatbelt tensioners and belt force limiters in the front - 3-point seatbelts on all seats, height-adjustable in the front)
- Steering wheel: multifunction leather steering wheel
- Reading lights front and rear (with LED technology)
- MyKey key system (individually programmable second key) (setting options include: limiting the maximum speed and radio volume, speed warning (when the set speed limit is exceeded), safety assistance systems cannot be deactivated, extended warning system for unfastened seat belts)
- Fog lights with LED technology
- Emergency brake light (pulsating brake lights during heavy braking)
- Package: Winter (heated windscreen - heated leather steering wheel - individually and variably heated front seats)
- Parking pilot system front and rear
- Rain sensor
- Low beam headlights with switch-off delay including "welcome function"
- Electromechanical power steering (EPAS (Electric Power Assisted Steering))
- Ambient lighting in the front with LED technology (including lighting of the front door handles, audio system console, cup holders and footwell)
- Exterior mirrors painted in body color, electrically adjustable and heated (with integrated indicators - ambient lighting)
- Tires: Tire repair kit (max. 80 km/h permitted when used)
- Hill start assist
- Roof rails "aluminum look"
- tachometer
- Lane Assist including Lane Keeping Assist and Fatigue Warning (warns the driver of an unintentional lane change (no activation of the indicator) via brief steering wheel vibrations - additionally, active steering assistance supports the change back into the lane)
- Ford Key Free System (keyless unlocking/locking)
- FordPass Connect including eCall, live traffic information, and Wi-Fi hotspot (information about the current status or location of the vehicle, as well as control of selected vehicle functions via smartphone with the FordPass app - eCall emergency call system for sending an emergency call in the event of an accident or manual activation - Current traffic information in real time - Wi-Fi hotspot (up to 4G/LTE7, for up to 10 mobile devices))
- Interior lighting with delay circuit
- Isofix mount (on all 2nd row seats)
- Electric child safety lock
- Air conditioning with automatic temperature control, CFC-free (separately adjustable for driver and passenger side as well as rear (3-zone automatic climate control))
- Paint finish: Uni
- Leather gear knob
- Steering wheel: Steering column, adjustable in height and reach
- Front center console with padded armrest (storage compartment and 2 cup holders)
- Ford navigation system including Ford SYNC 3 with AppLink, touchscreen, DAB/DAB+, and FordPass Connect (communications and entertainment system with voice control, support for Android Auto and Apple CarPlay, Bluetooth hands-free system and audio streaming, 14 different languages, graphic and acoustic, eCall emergency call system for sending an emergency call in the event of an accident or manual operation, live traffic information, Wi-Fi hotspot, radio-CD player, 2 USB ports, 8 speakers, and steering wheel remote control, 20.3 cm screen diagonal, digital radio reception DAB/DAB+)
- Upholstery: Cloth
- Tire pressure monitoring system (TPMS)
- Headlight assistant with day/night sensor (high beam assistant - interior mirror, automatically dimming)



- Seats: 3rd row with 2 individual seats (FoldFlatSystem) (3rd row can be folded down individually at the touch of a button and opened electrically - retractable headrests)
- Seats: Comfort seats, front
- Seats: Trays on the front seat backrests
- Power socket: 12-volt connection in the luggage compartment and center console
- Daytime running lights in LED technology
- Velour carpet floor mats (for the 1st, 2nd and 3rd row of seats)
- Thermal insulation glazing
- Cigarette lighter (and ashtray in the center console)
- Seats: 2nd row with 3 individual seats (FoldFlat System) (lengthwise adjustable - seat backrests can be folded down individually - headrests can be retracted - easy entry into the 3rd row (Easy Entry))
- Seats: Driver and passenger seats, 4-way manually adjustable (including manually adjustable lumbar support)
- Start-stop system
- Socket: 230-volt connection (150 watts)
- Front bumper painted in body color (rear bumper top painted in body color, bottom in black)
- Lashing eyes in the luggage compartment
- Electronic immobilizer
- Central locking with remote control (remote luggage compartment unlocking - second folding vehicle key)

Extra equipment

- Removable trailer hitch (including ESP trailer stabilization)
- Family Package
- Side windows from 2nd row and rear window, dark tinted
- Anti-theft alarm system including double locking (with interior monitoring)
- Sun blinds integrated in the rear doors

Brief expert findings

Documents submitted	At the time of the inspection, the registration certificate Part 2 (letter) was available, but the registration certificate Part 1 (certificate) was not. (Copy)
VIN comparison	The vehicle identification number (VIN) was read from the vehicle and its conformity with the submitted documents was verified during the inspection by the undersigned.
Inspection	The inspection conditions were sufficient for the assessment of the vehicle. Lifting equipment and a pit were available for examining the vehicle.
Test drive	No test drive/maneuvering was carried out during the inspection of the vehicle.
Engine function test	An engine test run was performed.

Value reducing factors

No.	Component group	Description
1	Equipment	Tirefit filler - Expired - Replace
2	Trim / covers	Door trim - rear right side - Scratched - Loss in value
3	Trim / covers	Boot lid - interior trim - Scratched - Loss in value
4	Wheel / tyres	Alloy rim - front right side - Scratched - Loss in value
5	Side panel - rear right side	Side panel - Scratched - Smart repair
6	Side panel - rear left side	Sill - Scratched - Smart repair
7	Door - front left side	Door - Scratched - Smart repair
8	Side panel - rear right side	Sill - Scratched - Smart repair
9	Door - rear left side	Door - Dent / paintcoat damage - Paint
10	Rear bumper	Rear bumper - Scratched - Repair and paint

Wear and tear

No.	Component group	Description
1	Interior	Interior - Scratch(es) - No deduction
2	Interior	Interior - Soiled - No deduction
3	Bonnet	Bonnet - Stone chips - No deduction



No.	Component group	Description
4	Body	Body - Scratch(es) - No deduction
5	Front bumper	Front bumper (polierbar) - Scratch(es) - No deduction

The vehicle shows signs of wear commensurate with its age and use.

Order/Scope of order

The order was placed to prepare a sales report for the vehicle described. This includes the following:

- Description of core relevant information about the vehicle
- Documentation of equipment features
(*Delivery by third-party service providers*)
- Documentation of damage, defects, missing parts
- Documentation of previous damage, unrepaired previous damage, repainting
- a brief visual or functional inspection of the equipment details if possible.
(*Functional tests of driver assistance systems are not included in the scope of services!*)
- a photo documentation of the vehicle

Basis for the order

This product is based on the Alphabet Fuhrpark GmbH guidelines for vehicle returns and valuations. The expert makes the explicit findings in each individual case objectively within the framework of the specified standards based on his or her own expertise.

The vehicle inspection takes place in a disassembled state.

Damage or defects that can only be detected during disassembly/diagnosis work or through advanced knowledge remain within the scope of the prognosis risk. An extended risk exists for concealed defects caused by fraudulent deception and not identifiable by the expert.

Damage or defects resulting from normal use or wear and tear of the vehicle will be accepted according to the applicable standard.

There was no explicit identification or monetary consideration of the expected features within the product.

Features which in their nature and severity slightly exceed normal use but do not constitute unacceptable damage will be documented and identified under signs of use if necessary.

Damage or defects which, according to the underlying standard, can no longer be attributed to normal use or wear and tear are listed in the product under "Depreciating Factors".

Depending on the product specification, a monetary ID can be provided. If this takes place, the costs can be 100% d or pro rata depending on the vehicle's age and mileage.

Previous damages

Apparently, no repaired previous damage could be found on the vehicle.

Comments

- Winterradsatz ist kein Bestandteil des Auslieferumfangs.



Figure 1: Diagonal front (left)



Figure 2: Diagonal front (right)



Figure 3: Diagonal rear (left)



Figure 4: Diagonal rear (right)



Figure 5: Interior - front



Figure 6: Interior - rear



Figure 7: Instrument cluster



Figure 8: Instrument panel



Figure 9: Interior 360° view



Figure 10: Cargo area



Figure 11: VIN



Figure 12: Mounted tyres

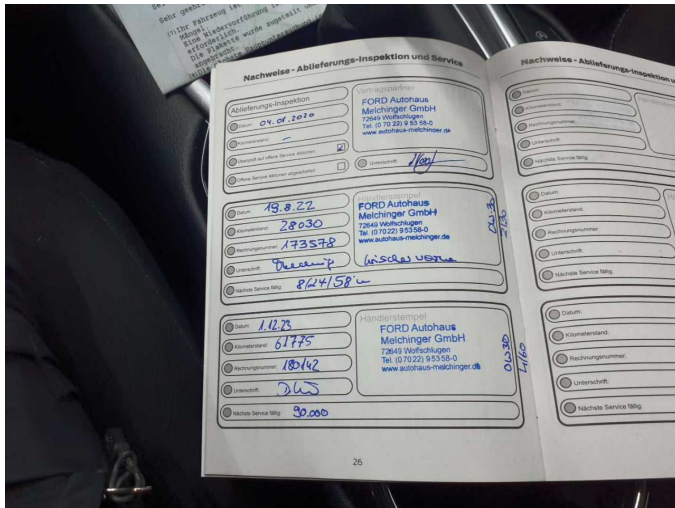


Figure 13: Documents



Figure 14: Documents

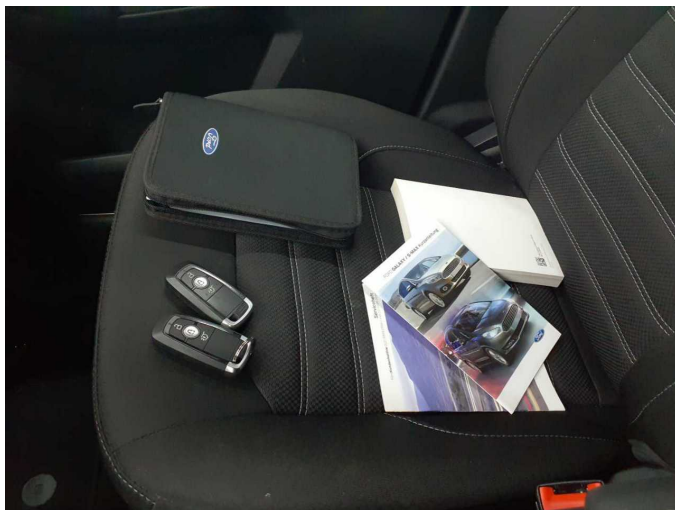


Figure 15: Documents



Figure 16: Documents

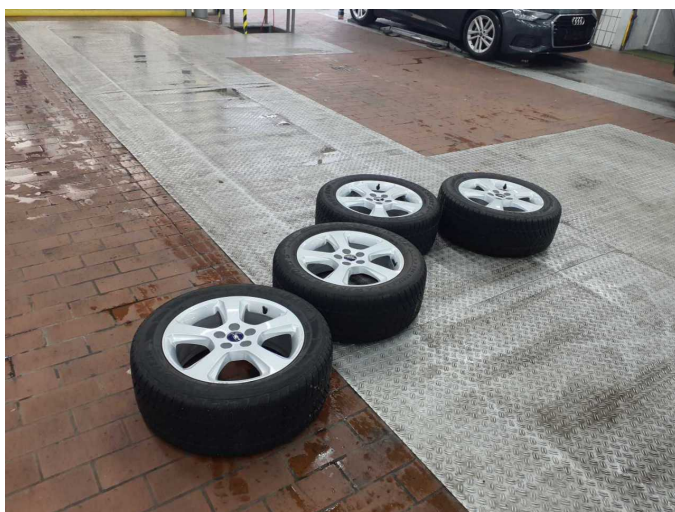


Figure 17: Additional tyres

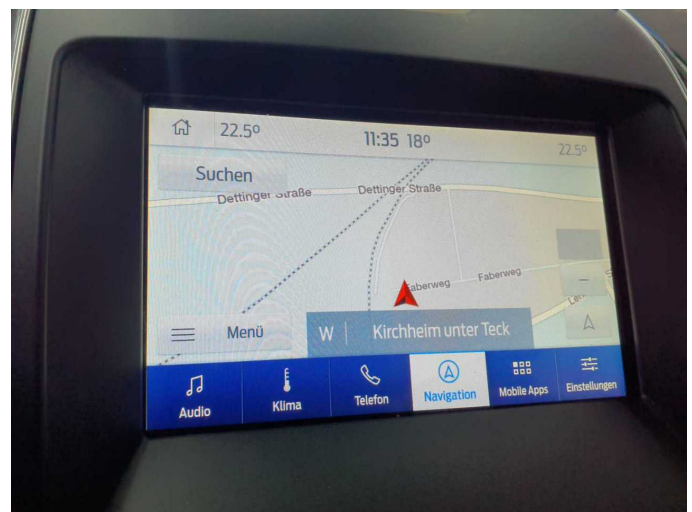


Figure 18: Navigation



Figure 19: Misc.



Figure 20: Misc.

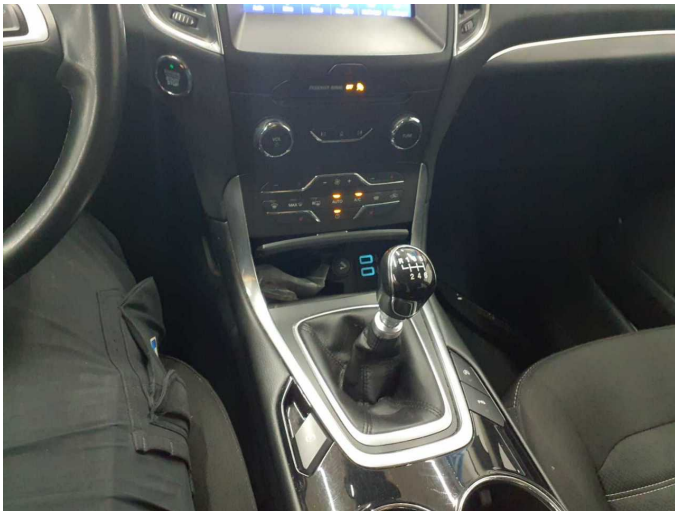


Figure 21: Misc.

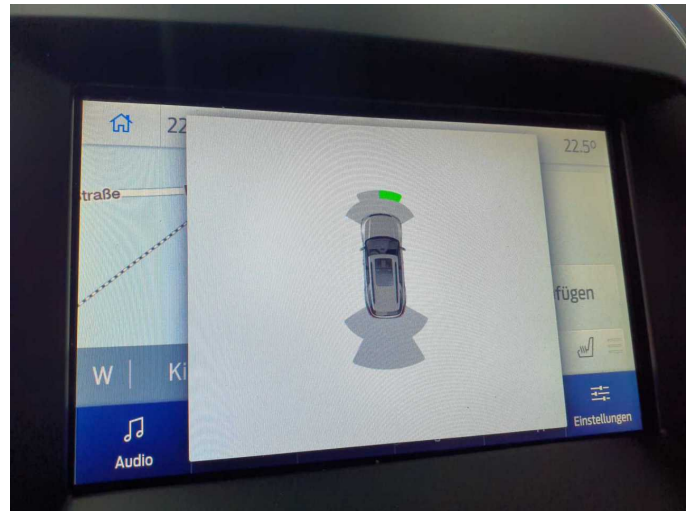


Figure 22: Misc.



Figure 23: Misc.



Figure 24: Misc.



Figure 25: Misc.



Figure 26: Misc.

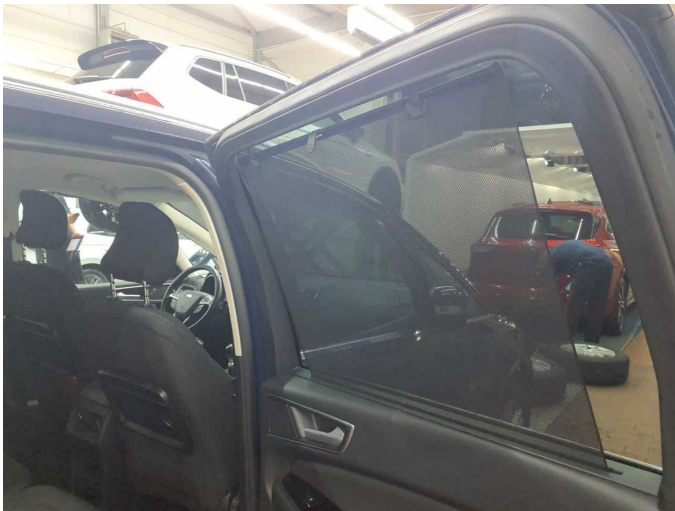


Figure 27: Misc.

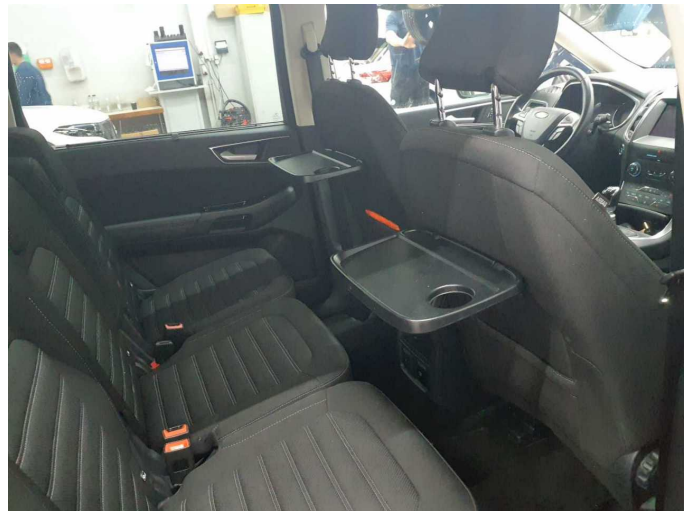


Figure 28: Misc.



Figure 29: Misc.



Figure 30: Misc.



Figure 31: Misc.



Figure 32: Misc.



Figure 33: Misc.



Figure 34: Misc.

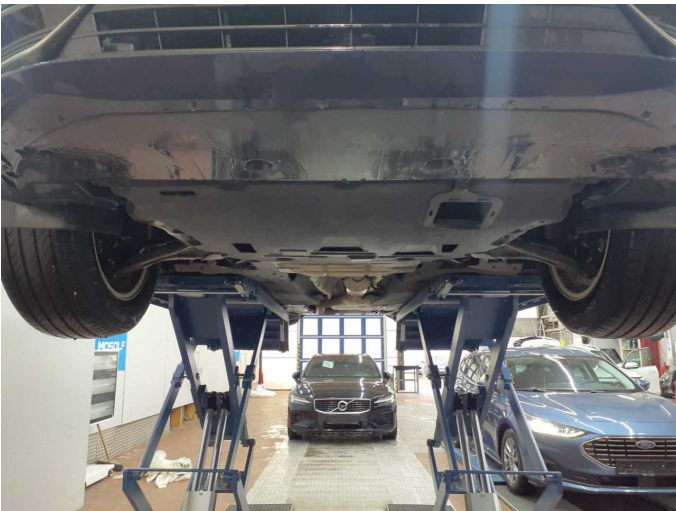


Figure 35: Misc.



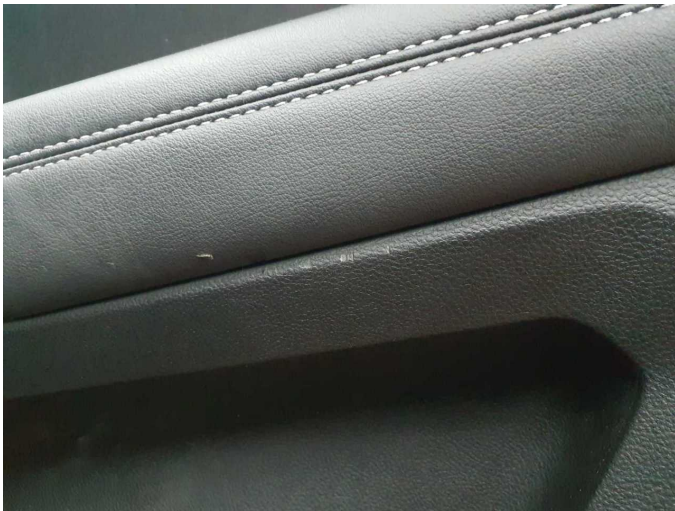
Damage 1: Equipment: Tirefit filler - Expired - Replace



Damage 2: Trim / covers: Door trim - rear right side - Scratched - Loss in value



Damage 2: Trim / covers: Door trim - rear right side - Scratched - Loss in value



Damage 2: Trim / covers: Door trim - rear right side - Scratched - Loss in value



Damage 2: Trim / covers: Door trim - rear right side - Scratched - Loss in value



Damage 3: Trim / covers: Boot lid - interior trim - Scratched - Loss in value



Damage 3: Trim / covers: Boot lid - interior trim - Scratched - Loss in value



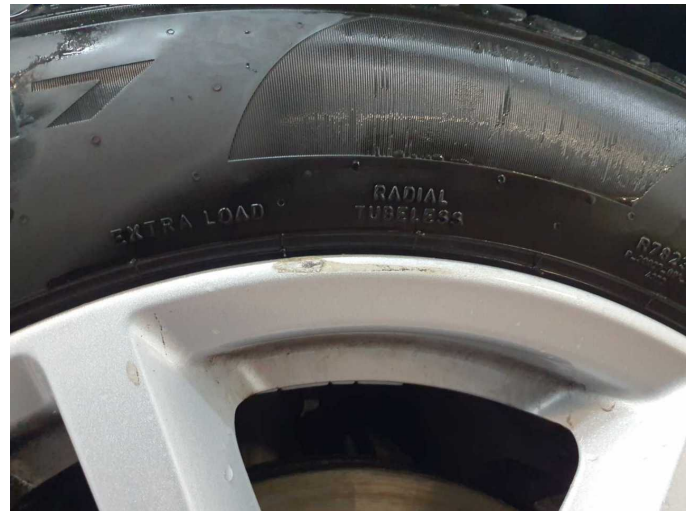
Damage 3: Trim / covers: Boot lid - interior trim - Scratched - Loss in value



Damage 3: Trim / covers: Boot lid - interior trim - Scratched - Loss in value



Damage 4: Wheel / tyres: Alloy rim - front right side - Scratched - Loss in value



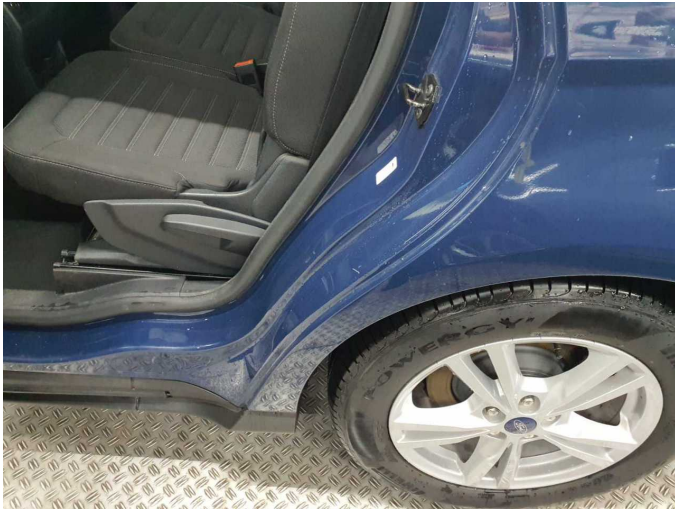
Damage 4: Wheel / tyres: Alloy rim - front right side - Scratched - Loss in value



Damage 5: Side panel - rear right side: Side panel - Scratched - Smart repair



Damage 5: Side panel - rear right side: Side panel - Scratched - Smart repair



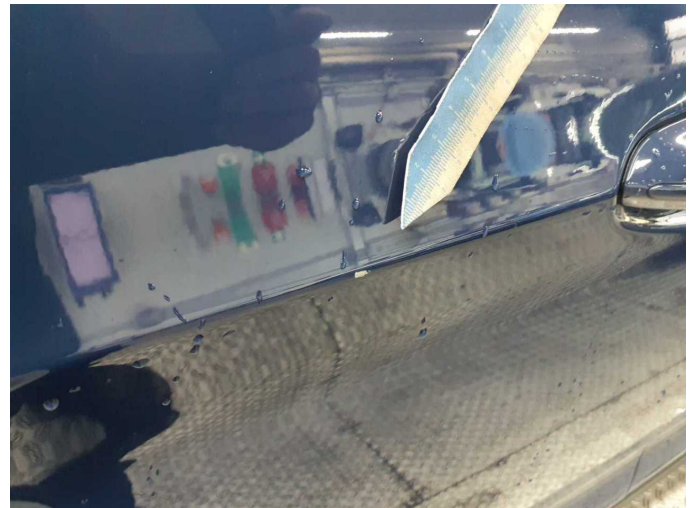
Damage 6: Side panel - rear left side: Sill - Scratched - Smart repair



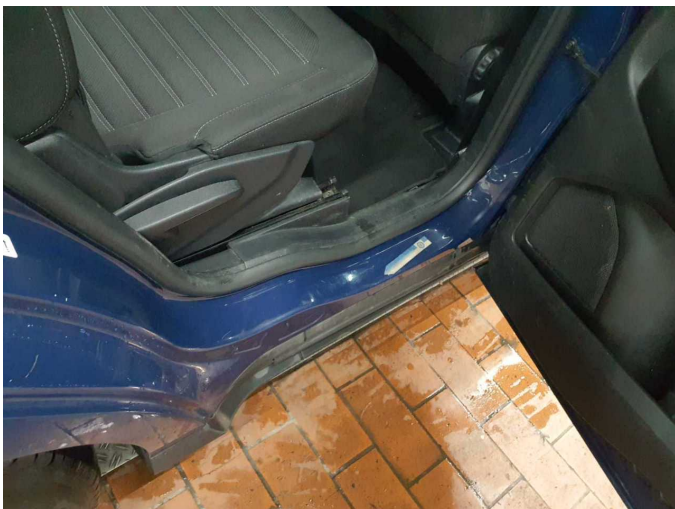
Damage 6: Side panel - rear left side: Sill - Scratched - Smart repair



Damage 7: Door - front left side: Door - Scratched - Smart repair



Damage 7: Door - front left side: Door - Scratched - Smart repair



Damage 8: Side panel - rear right side: Sill - Scratched - Smart repair



Damage 8: Side panel - rear right side: Sill - Scratched - Smart repair



Damage 8: Side panel - rear right side: Sill - Scratched - Smart repair



Damage 8: Side panel - rear right side: Sill - Scratched - Smart repair



Damage 9: Door - rear left side: Door - Dent / paintcoat damage - Paint



Damage 9: Door - rear left side: Door - Dent / paintcoat damage - Paint



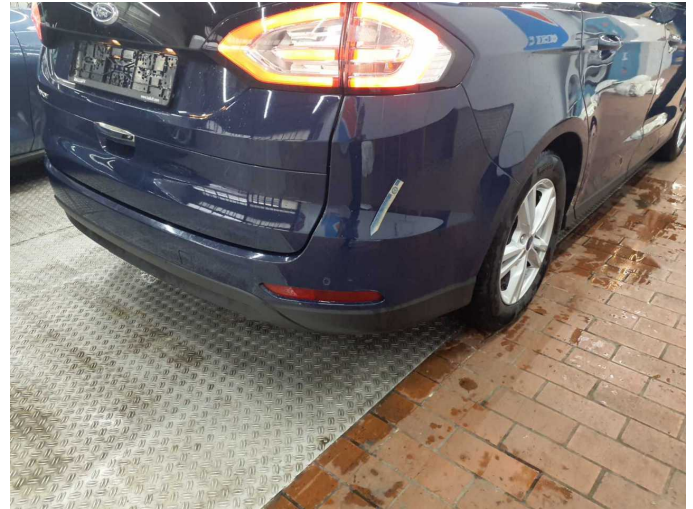
Damage 9: Door - rear left side: Door - Dent / paintcoat damage - Paint



Damage 9: Door - rear left side: Door - Dent / paintcoat damage - Paint



Damage 9: Door - rear left side: Door - Dent / paintcoat damage - Paint



Damage 10: Rear bumper: Rear bumper - Scratched - Repair and paint



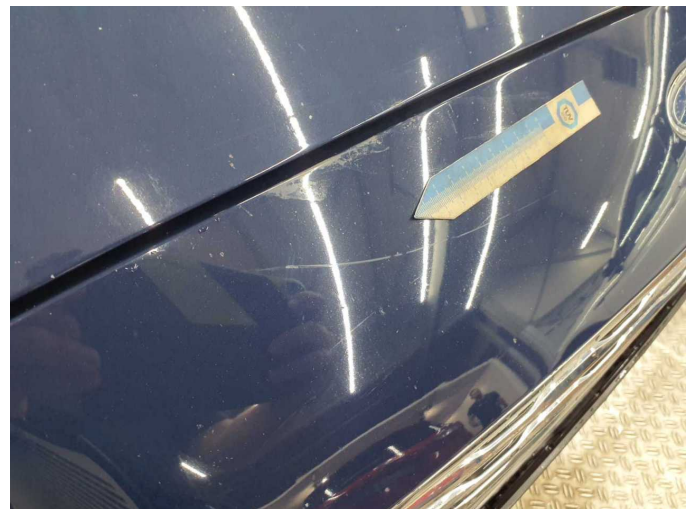
Damage 10: Rear bumper: Rear bumper - Scratched - Repair and paint



Damage 10: Rear bumper: Rear bumper - Scratched - Repair and paint



Wear and tear 5: Front bumper: Front bumper (polierbar) - Scratch(es) - No deduction



Wear and tear 5: Front bumper: Front bumper (polierbar) - Scratch(es) - No deduction



Wartungshistorie

(gemäß Auftraggeber Informationen)

Fahrgestellnummer: WF0KXXWPCKLK65310

Hersteller / Modell: FORD FORD Galaxy 2.0 EcoBlue S&S TITANIUM

Datum	KM-Stand	Beschreibung
14.04.2025	90.981	Motoröl b. Wartung; Ölwechsel
08.11.2024	81.081	Bremse Sonstiges; Bremsklötze hinten; Bremsscheiben + Klötze h; Bremsscheiben hinten; Lichtmaschine ern/inst; Systemtest/Eigendiagnose
01.12.2023	61.775	AU; Kraftstofffilter ern; Luftfiltereinsatz ern; Motoröl b. Wartung; Ölfilter ern; Regelwartungsdienst; Wartung Sonstiges
22.08.2022	28.030	Bremsflüssigkeit; Bremsflüssigkeit ern; Motoröl b. Wartung; Ölfilter ern; Regelwartungsdienst; Wartung Sonstiges