



Expertise

Protocol number: 41340866
Order No. / Reference: 25133245
Inspection date: 2 Sept 2025

Manufacturer: Ford

Model: S-Max 2.0 EcoBlue Aut. TREND

VIN: WF0JXXWPCJNM00195



Vehicle details	
Manufacturer / Type / Model / Equipment	
Ford S-Max 2.0 EcoBlue Aut. TREND	
Vehicle Identification number	WF0JXXWPCJNM00195
Mileage (Read)	174,642 km
First registration	2 Sept 2022
Number of holders	1
Next periodical technical inspection	09/2025
(Report not on hand)	
Power / Engine displacement	110 kw / 1,995 ccm
Fuel type / Cylinder	Diesel / 4
Gearbox / Number of gears	Automatic / 8
Type of drive	Front drive
Type of vehicle	Station wagon
Colour / colour code	Frost-Weiß
Doors / Seats	5 / 5
Upholstery type	Cloth
Colour of upholstery	Anthracite-Grey



Vehicle details

Maintenance booklet / proof	Available / complete	Next maintenance in	11,000 km
Last maintenance on / at	05/2025 at 155,952 km		
Key is / should be	2 / 2	FZG documents	ZB#2 (B) was available (copy), ZB#1 (S) was not available
		Letter No.	GK853397
Previous damage / Accident	None detectable	Repainting	Detectable
Inspection conditions	sufficient	Lifting equipment / pit	yes
Test drive	Not performed	Engine function test	Performed
Manufacturer key number/ type code number	8566 / BKM 01249		
Emission standard	EURO6;WLTP;AP;PI/CI; M, N1 I	Fine dust sticker	
Permitted total weight	2,555 kg	Empty weight	

Tyres

Mounted tyres

#	Tyre size	Type of tyre	Manufacturer	Tread depth
1)	235/55 R17 103Y	Summer tyres on Light alloy	Uniroyal	3mm / 3mm
2)	235/55 R17 103Y	Summer tyres on Light alloy	Uniroyal	4mm / 4mm

Replacement

Typ	Tyre size	Type of tyre	Manufacturer	Tread depth
	Tirefit	Expiration date 07/2026		

Legend: Tread depth information for tires on the left is in the first place, for tires on the right is in the second place on the axle in the direction of travel



Equipment

Standard equipment

- Shelves
- Exterior mirrors in body color, driver and passenger side, electrically adjustable and heated
- Hill start assist
- roof console
- tachometer
- Driver information system display 10.7cm color
- High beam assistant
- Ford Easy Fuel
- Ford Power start function
- Luggage compartment cover
- Cruise control system with intelligent speed limiter
- Back window, heater
- Interior lighting with delay circuit
- Intelligent security system
- Electric child safety lock
- Steering wheel: Steering column, adjustable in height and reach
- Front center console with padded armrest
- Fog light
- Parking pilot system front and rear
- Radio equipment: Ford SYNC 3 with AppLink, touchscreen, DAB/ DAB+ and FordPass Connect
- Taillights with LED technology
- Low beam headlights with switch-off delay including "welcome function"
- Seats: Driver and passenger seats, 4-way manually adjustable
- Start-stop system
- Bumpers painted in body color
- Daytime running light
- Traffic sign recognition system
- Unfastened seat belt warning system for the 1st and 2nd row of seats
- Anti-lock braking system (ABS)
- Attachment points for safety barriers
- Tires: 7.5 J x 17 alloy wheels (4) with 235/55 R 17 tires
- Brake light, third
- Diesel particulate filter (DPF)
- Electronic Shifter
- Electric windows front and rear
- Parking brake, electronic
- Ford EasyFold: Second row seat backrests can be electrically folded at the touch of a button
- Luggage compartment lighting
- Transmission: 8-speed automatic transmission
- Rear window wiper
- Interior mirror, automatically dimming
- Isofix mount
- Air conditioning with automatic temperature control
- Steering wheel: multifunction leather steering wheel
- Reading lights front and rear
- MyKey key system (individually programmable second key)
- Emergency brake light
- Upholstery: Cloth
- Tire repair kit
- Tire pressure monitoring system (TPMS)
- Windscreen wipers with rain sensor
- Headlight assistant with day/night sensor
- Electro-mechanical power steering
- Seats: Flexible seating system "FoldFlatSystem (FFS)"
- Seats: Front sports seats
- Power socket: 12-volt connection in the luggage compartment and center console
- Carpet floor mats "Premium" front and rear
- Lashing eyes in the luggage compartment
- Immobiliser
- Central locking with remote control

Extra equipment

- Removable trailer hitch (including ESP trailer stabilization)
- Package: Business II (Ford navigation system including Ford SYNC 3, AppLink, 20.3 cm touchscreen, DAB/DAB+ voice control, Android Auto and Apple CarPlay, Bluetooth hands-free system and audio streaming, FordPass Connect, eCall emergency call system, radio-CD player, 2 USB ports, 8 speakers, steering wheel remote control, adaptive LED headlights, cornering lights, automatic headlight range control, headlight assistant, day/night sensor, high beam assistant, LED daytime running lights, anti-theft alarm, rear view camera)
- Paint finish: Frost White
- Package: Winter (heated windscreen - heated leather steering wheel - individually and variably heated front seats)
- Side windows from 2nd row and rear window, dark tinted
- Seats: Ford ergonomic seat (driver's seat 18-way adjustable: - length, height, and seat angle - extendable thigh support - adjustable backrest - 4-way electrically adjustable lumbar support - passenger seat, 4-way manually adjustable, including manually adjustable lumbar support)



Brief expert findings

Documents submitted	At the time of the inspection, the registration certificate Part 2 (letter) was available, but the registration certificate Part 1 (certificate) was not. (Copy)
VIN comparison	The vehicle identification number (VIN) was read from the vehicle and its conformity with the submitted documents was verified during the inspection by the undersigned.
Inspection	The inspection conditions were sufficient for the assessment of the vehicle. Lifting equipment and a pit were available for examining the vehicle.
Test drive	No test drive/maneuvering was carried out during the inspection of the vehicle.
Engine function test	An engine test run was performed.

Value reducing factors

No.	Component group	Description
1	Misc.	Main inspection - No evidence - No deduction
2	Side panel - rear right side	Sill - Scratch(es) - Smart repair
3	Door - front left side	Door edge - Scratch(es) - Smart repair
4	Mudguard - left side	Mudguard - left side - Scratch(es) - Paint
5	Bonnet	Bonnet - Stone chips - Paint
6	Side panel - rear right side	Side panel (Lackmangel-blättert ab) - Unprofessionally repaired - Repair and paint
7	Front bumper	Front bumper - Stone chips - Paint
8	Rear bumper	Rear bumper - Scratch(es) - Paint

Repainting

No. Repainting

- Door - rear right side, Door - front right side, Professionally carried out, Invoice of repair done Non-existent
- Side panel - rear right side, Unprofessionally carried out

Paint coat thickness measurement

Side panel - rear right side	213 µm	Door - rear right side	196 µm
Door - front right side	199 µm		

Order/Scope of order

The order was placed to prepare a sales report for the vehicle described. This includes the following:

- Description of core relevant information about the vehicle
- Documentation of equipment features
(Delivery by third-party service providers)
- Documentation of damage, defects, missing parts
- Documentation of previous damage, unrepaired previous damage, repainting
- a brief visual or functional inspection of the equipment details if possible.
(Functional tests of driver assistance systems are not included in the scope of services!)
- a photo documentation of the vehicle



Basis for the order

This product is based on the Alphabet Fuhrpark GmbH guidelines for vehicle returns and valuations. The expert makes the explicit findings in each individual case objectively within the framework of the specified standards based on his or her own expertise.

The vehicle inspection takes place in a disassembled state.

Damage or defects that can only be detected during disassembly/diagnosis work or through advanced knowledge remain within the scope of the prognosis risk. An extended risk exists for concealed defects caused by fraudulent deception and not identifiable by the expert.

Damage or defects resulting from normal use or wear and tear of the vehicle will be accepted according to the applicable standard.

There was no explicit identification or monetary consideration of the expected features within the product.

Features which in their nature and severity slightly exceed normal use but do not constitute unacceptable damage will be documented and identified under signs of use if necessary.

Damage or defects which, according to the underlying standard, can no longer be attributed to normal use or wear and tear are listed in the product under "Depreciating Factors".

Depending on the product specification, a monetary ID can be provided. If this takes place, the costs can be 100% d or pro rata depending on the vehicle's age and mileage.

Previous damages

Apparently, no repaired previous damage could be found on the vehicle.



Figure 1: Diagonal front (left)



Figure 2: Diagonal front (right)



Figure 3: Diagonal rear (left)



Figure 4: Diagonal rear (right)



Figure 5: Interior - front

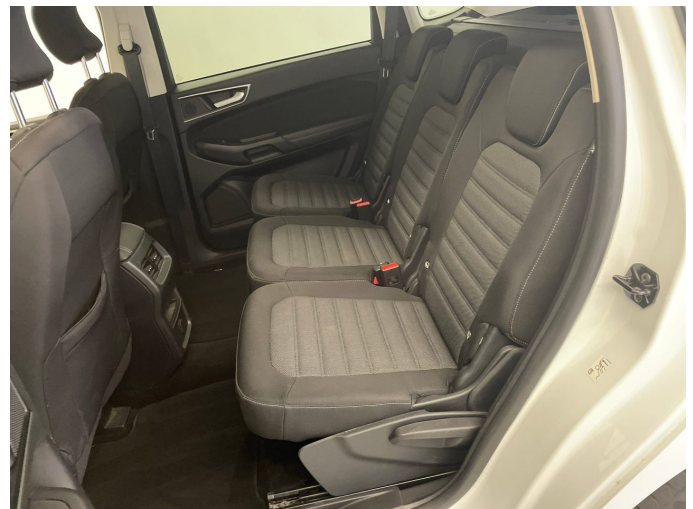


Figure 6: Interior - rear



Figure 7: Instrument cluster



Figure 8: Instrument panel



Figure 9: interior 360° view



Figure 10: Cargo area

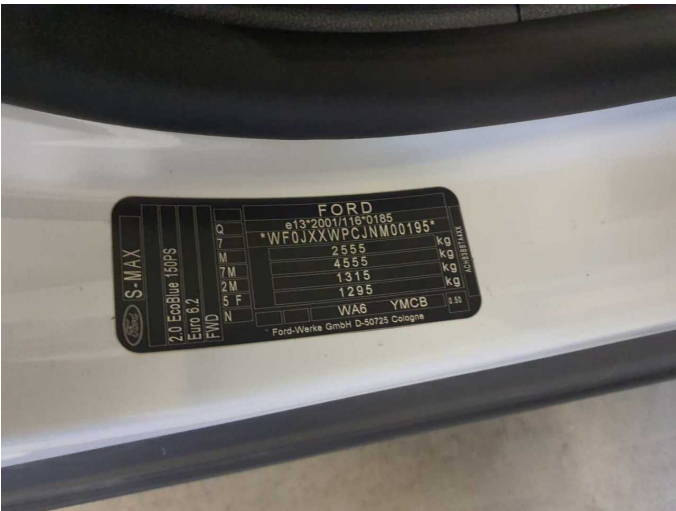


Figure 11: VIN



Figure 12: Mounted tyres

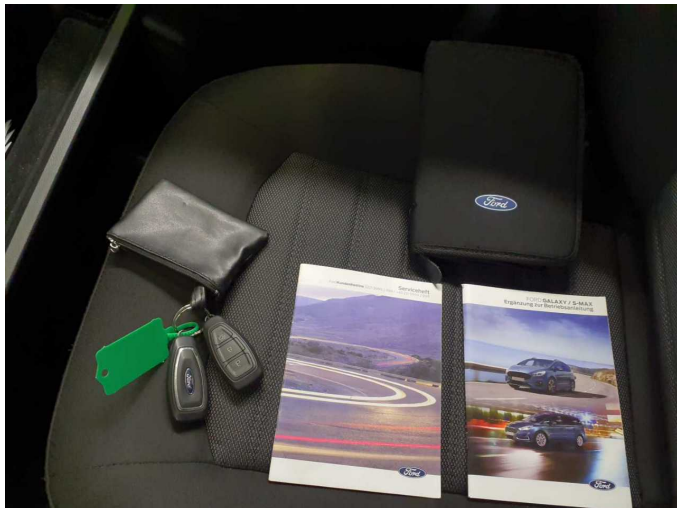


Figure 13: Documents

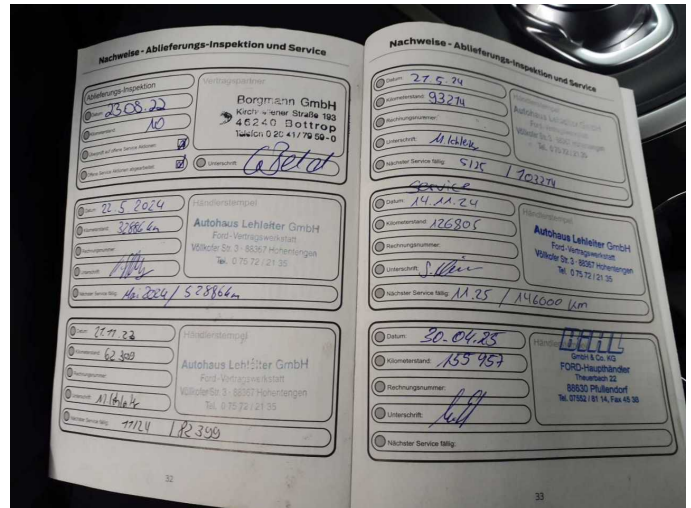


Figure 14: Documents



Figure 15: Navigation



Figure 16: Misc.



Figure 17: Misc.



Figure 18: Misc.



Figure 19: Misc.



Figure 20: Misc.



Figure 21: Misc.



Figure 22: Misc.



Figure 23: Misc.



Figure 24: Misc.



Damage 2: Side panel - rear right side: Sill - Scratch(es) - Smart repair



Damage 2: Side panel - rear right side: Sill - Scratch(es) - Smart repair



Damage 3: Door - front left side: Door edge - Scratch(es) - Smart repair



Damage 3: Door - front left side: Door edge - Scratch(es) - Smart repair



Damage 3: Door - front left side: Door edge - Scratch(es) - Smart repair



Damage 3: Door - front left side: Door edge - Scratch(es) - Smart repair



Damage 4: Mudguard - left side: Mudguard - left side - Scratch(es) - Paint



Damage 4: Mudguard - left side: Mudguard - left side - Scratch(es) - Paint



Damage 4: Mudguard - left side: Mudguard - left side - Scratch(es) - Paint



Damage 4: Mudguard - left side: Mudguard - left side - Scratch(es) - Paint



Damage 4: Mudguard - left side: Mudguard - left side - Scratch(es) - Paint



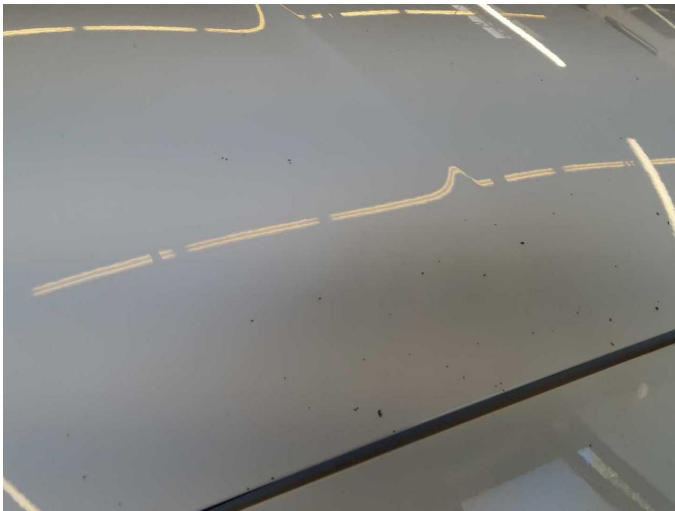
Damage 5: Bonnet: Bonnet - Stone chips - Paint



Damage 5: Bonnet: Bonnet - Stone chips - Paint



Damage 5: Bonnet: Bonnet - Stone chips - Paint



Damage 5: Bonnet: Bonnet - Stone chips - Paint



Damage 5: Bonnet: Bonnet - Stone chips - Paint



Damage 6: Side panel - rear right side: Side panel (Lackmangel-blättert ab) - Unprofessionally repaired - Repair and paint



Damage 6: Side panel - rear right side: Side panel (Lackmangel-blättert ab) - Unprofessionally repaired - Repair and paint



Damage 7: Front bumper: Front bumper - Stone chips - Paint



Damage 7: Front bumper: Front bumper - Stone chips - Paint



Damage 7: Front bumper: Front bumper - Stone chips - Paint



Damage 7: Front bumper: Front bumper - Stone chips - Paint



Damage 7: Front bumper: Front bumper - Stone chips - Paint



Damage 8: Rear bumper: Rear bumper - Scratch(es) - Paint



Damage 8: Rear bumper: Rear bumper - Scratch(es) - Paint



Damage 8: Rear bumper: Rear bumper - Scratch(es) - Paint



Damage 8: Rear bumper: Rear bumper - Scratch(es) - Paint



Damage 8: Rear bumper: Rear bumper - Scratch(es) - Paint



Repainting 1: Door - rear right side, Door - front right side



Repainting 1: Door - rear right side, Door - front right side



Repainting 2: Side panel - rear right side



Wartungshistorie

(gemäß Auftraggeber Informationen)

Fahrgestellnummer: WF0JXXWPCJNM00195
Hersteller / Modell: FORD FORD S-Max 2.0 EcoBlue Aut. TREND

Datum	KM-Stand	Beschreibung
27.05.2025	161.227	Systemtest/Eigendiagnose
22.05.2025	155.952	Motoröl b. Wartung; Ölfilter ern; Regelwartungsdienst; Wartung Sonstiges
12.03.2025	144.494	Bremse Sonstiges; Bremsklötze vorne
23.01.2025	135.533	Getriebeöl ern/prüfen
18.11.2024	126.802	Bremse Sonstiges; Bremsflüssigkeit; Bremsflüssigkeit ern; Bremsklötze vorne; Kraftstofffilter ern; Luftfiltereinsatz ern; Motoröl b. Wartung; Ölfilter ern; Regelwartungsdienst; Wartung Sonstiges
23.05.2024	93.214	Bremse Sonstiges; Bremsklötze vorne; Bremsscheiben + Klötze v; Bremsscheiben vorne; Motoröl b. Wartung; Ölfilter ern; Regelwartungsdienst; Wartung Sonstiges
22.11.2023	62.399	Kraftstofffilter ern; Luftfiltereinsatz ern; Motoröl b. Wartung; Ölfilter ern; Regelwartungsdienst; Wartung Sonstiges
09.10.2023	55.270	Bremse Sonstiges; Bremsklötze hinten; Bremsscheiben + Klötze h; Bremsscheiben hinten
24.08.2023	49.608	Bremse Sonstiges; Bremsklötze vorne
25.05.2023	32.886	Motoröl b. Wartung; Ölfilter ern; Regelwartungsdienst; Wartung Sonstiges