



Expertise

Protocol number: 41346061
Order No. / Reference: 25096691
Inspection date: 28 Aug 2025

Manufacturer: Ford	Model: S-Max 2.0 EcoBlue Aut. TITANIUM
VIN: WF0JXXWPCJMR33593	



Vehicle details	
Manufacturer / Type / Model / Equipment	
Ford S-Max 2.0 EcoBlue Aut. TITANIUM	
Vehicle Identification number	WF0JXXWPCJMR33593
Mileage (Read)	165,537 km
First registration	9 Jul 2021
Number of holders	1
Power / Engine displacement	110 kw / 1,995 ccm
Fuel type / Cylinder	Diesel / 4
Gearbox / Number of gears	Automatic / 8
Type of drive	Front drive
Type of vehicle	Van
Colour / colour code	Blazer-Blau
Doors / Seats	5 / 5
Upholstery type	Cloth
Colour of upholstery	Anthracite-Black



Vehicle details

Maintenance booklet / proof	Non-existent	Next maintenance in	
Key is / should be	2 / 2	FZG documents	ZB#2 (B) was available (copy), ZB#1 (S) was not available
		Letter No.	GD546144
Previous damage / Accident	None detectable	Repainting	Detectable
Inspection conditions	sufficient	Lifting equipment / pit	yes
Test drive	Not performed	Engine function test	Performed
Manufacturer key number/ type code number	8566 / BKM 01121		
Emission standard	EURO6;WLTP;AP;PI/CI; M, N1 I	Fine dust sticker	
Permitted total weight	2,555 kg	Empty weight	

Tyres

Mounted tyres

#	Tyre size	Type of tyre	Manufacturer	Tread depth
1)	235/55 R17 103W	All-season tyres on Light alloy	Hankook	6mm / 6mm
2)	235/55 R17 103W	All-season tyres on Light alloy	Hankook	7mm / 7mm

Replacement

Typ	Tyre size	Type of tyre	Manufacturer	Tread depth
	Tirefit	Expiration date 06/2025		

Legend: Tread depth information for tires on the left is in the first place, for tires on the right is in the second place on the axle in the direction of travel



Equipment

Standard equipment

- Shelves
- Anti-lock braking system (ABS)
- Attachment points for safety barriers
- Tires: 7.5 J x 17 alloy wheels (4) with 235/55 R 17 tires
- Brake light, third
- Roof rails "aluminum look"
- tachometer
- Driver information system display 25.4 cm color
- Electric windows front and rear
- High beam assistant
- Ford Easy Fuel
- Ford Power start function
- Ford Power start function with Ford Key Free system
- Luggage compartment lighting
- Transmission: 8-speed automatic transmission
- Rear window wiper
- Interior mirror, automatically dimming
- Isofix mount
- Air conditioning with automatic temperature control
- Steering wheel: Steering column, adjustable in height and reach
- Front center console with padded armrest
- Ford navigation system including Ford SYNC 3 with AppLink, touchscreen, DAB/DAB+ and FordPass Connect
- Package: Winter
- Upholstery: Cloth
- Tire pressure monitoring system (TPMS)
- Windscreen wipers with rain sensor
- Headlight assistant with day/night sensor
- Electro-mechanical power steering
- Seats: Flexible seating system "FoldFlatSystem (FFS)"
- Seats: Front sports seats
- Start-stop system
- Power socket: 12-volt connection in the luggage compartment and center console
- Daytime running lights in LED technology
- Traffic sign recognition system
- Unfastened seat belt warning system for the 1st and 2nd row of seats
- Cigarette lighter
- Ambient lighting at the front
- Exterior mirrors in body color, driver and passenger side, electrically adjustable and heated
- Hill start assist
- roof console
- Diesel particulate filter (DPF)
- Electronic Shifter
- Lane Assistant including Lane Keeping Assist and Fatigue Warning
- Parking brake, electronic
- Ford EasyFold: Second row seat backrests can be electrically folded at the touch of a button
- Luggage compartment cover
- Cruise control system with intelligent speed limiter
- Back window, heater
- Interior lighting with delay circuit
- Intelligent security system
- Electric child safety lock
- Paint finish: Uni
- Steering wheel: multifunction leather steering wheel
- Reading lights front and rear
- MyKey key system (individually programmable second key)
- Fog light
- Emergency brake light
- Parking pilot system front and rear
- Tire repair kit
- Taillights with LED technology
- Low beam headlights with switch-off delay including "welcome function"
- Seats: Driver and passenger seats, 4-way manually adjustable
- Seats: Front seats individually and variably heated
- 230 volt socket
- Bumpers painted in body color
- Trays on the front seat backrests
- Carpet floor mats "Premium" front and rear
- Lashing eyes in the luggage compartment
- Immobiliser
- Central locking with remote control

Extra equipment



- Package: Business II (Ford navigation system including Ford SYNC 3, AppLink, 20.3 cm touchscreen, DAB/DAB+ voice control, Android Auto and Apple CarPlay, Bluetooth hands-free system and audio streaming, FordPass Connect, eCall emergency call system, radio-CD player, 2 USB ports, 8 speakers, steering wheel remote control, adaptive LED headlights, cornering lights, automatic headlight range control, headlight assistant, day/night sensor, high beam assistant, LED daytime running lights, anti-theft alarm, rear view camera)
- Side windows from 2nd row and rear window, dark tinted
- Safety partition net, behind the 2nd row of seats
- Seats: Ford ergonomic seat (driver's seat 18-way adjustable: - length, height, and seat angle - extendable thigh support - adjustable backrest - 4-way electrically adjustable lumbar support - passenger seat, 4-way manually adjustable, including manually adjustable lumbar support)
- Sun blinds in the rear side doors (manual)

Brief expert findings

Documents submitted	At the time of the inspection, the registration certificate Part 2 (letter) was available, but the registration certificate Part 1 (certificate) was not. (Copy)
VIN comparison	The vehicle identification number (VIN) was read from the vehicle and its conformity with the submitted documents was verified during the inspection by the undersigned.
Inspection	The inspection conditions were sufficient for the assessment of the vehicle. Lifting equipment and a pit were available for examining the vehicle.
Test drive	No test drive/maneuvering was carried out during the inspection of the vehicle.
Engine function test	An engine test run was performed.

Value reducing factors

No.	Component group	Description
1	Misc.	Main inspection - No evidence - No deduction
2	Equipment	Tirefit filler - Expired - Replace
3	Door - rear left side	Door - dent(s) - Smooth repair work
4	Front bumper	Front bumper - Scratch(es) - Smart repair
5	Tail light	Tail lamp - left side - Leaking - Replace
6	Front bumper	Spoiler (Lackmangel) - Stone chips - Paint
7	Bonnet	Bonnet (Steinschlag, Lackstift) - Unprofessionally repaired - Paint
8	Rear bumper	Rear bumper - Scratch(es) - Paint

Missing parts

Description

Documents - Service book

Repainting

No. Repainting

- 1 Mudguard - left side, Professionally carried out, Invoice of repair done Non-existent
- 2 Side panel - rear left side, Professionally carried out, Invoice of repair done Non-existent
- 3 Side panel - rear right side, Professionally carried out, Invoice of repair done Non-existent
- 4 Door - rear right side, Professionally carried out, Invoice of repair done Non-existent

Paint coat thickness measurement

Mudguard - left side	156 µm	Side panel - rear left side	163 µm
Side panel - rear right side	171 µm	Door - rear right side	220 µm



Order/Scope of order

The order was placed to prepare a sales report for the vehicle described. This includes the following:

- Description of core relevant information about the vehicle
- Documentation of equipment features
(Delivery by third-party service providers)
- Documentation of damage, defects, missing parts
- Documentation of previous damage, unrepaired previous damage, repainting
- a brief visual or functional inspection of the equipment details if possible.
(Functional tests of driver assistance systems are not included in the scope of services!)
- a photo documentation of the vehicle

Basis for the order

This product is based on the Alphabet Fuhrpark GmbH guidelines for vehicle returns and valuations. The expert makes the explicit findings in each individual case objectively within the framework of the specified standards based on his or her own expertise.

The vehicle inspection takes place in a disassembled state.

Damage or defects that can only be detected during disassembly/diagnosis work or through advanced knowledge remain within the scope of the prognosis risk. An extended risk exists for concealed defects caused by fraudulent deception and not identifiable by the expert.

Damage or defects resulting from normal use or wear and tear of the vehicle will be accepted according to the applicable standard.

There was no explicit identification or monetary consideration of the expected features within the product.

Features which in their nature and severity slightly exceed normal use but do not constitute unacceptable damage will be documented and identified under signs of use if necessary.

Damage or defects which, according to the underlying standard, can no longer be attributed to normal use or wear and tear are listed in the product under "Depreciating Factors".

Depending on the product specification, a monetary ID can be provided. If this takes place, the costs can be 100% d or pro rata depending on the vehicle's age and mileage.

Previous damages

Apparently, no repaired previous damage could be found on the vehicle.



Figure 1: Diagonal front (left)



Figure 2: Diagonal front (right)



Figure 3: Diagonal rear (left)



Figure 4: Diagonal rear (right)



Figure 5: Interior - front



Figure 6: Interior - rear



Figure 7: Instrument cluster



Figure 8: Instrument panel



Figure 9: interior 360° view ([Online link](#))



Figure 10: Cargo area



Figure 11: VIN



Figure 12: Mounted tyres

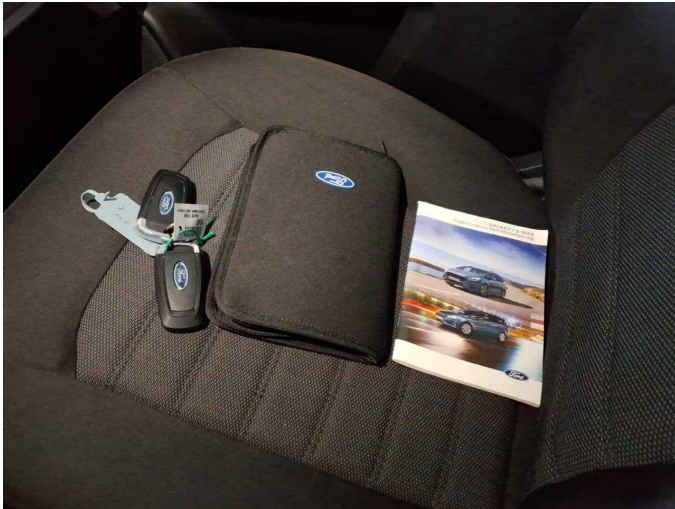


Figure 13: Documents



Figure 14: Documents



Figure 15: Navigation

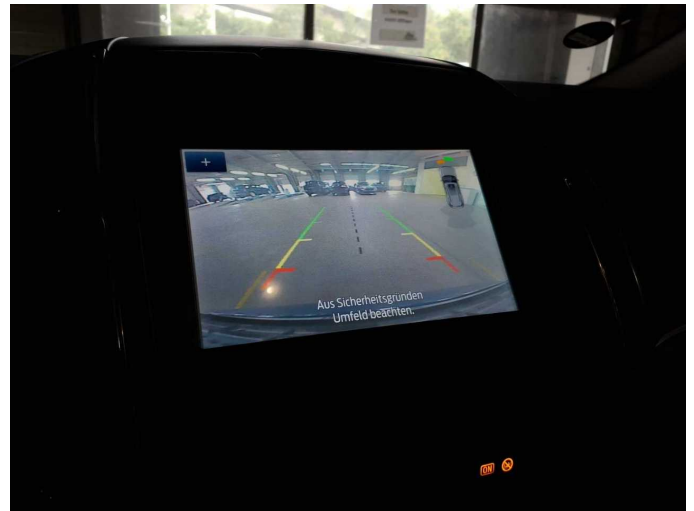


Figure 16: Misc.



Figure 17: Misc.



Figure 18: Misc.



Figure 19: Misc.



Figure 20: Misc.



Figure 21: Misc.



Figure 22: Misc.

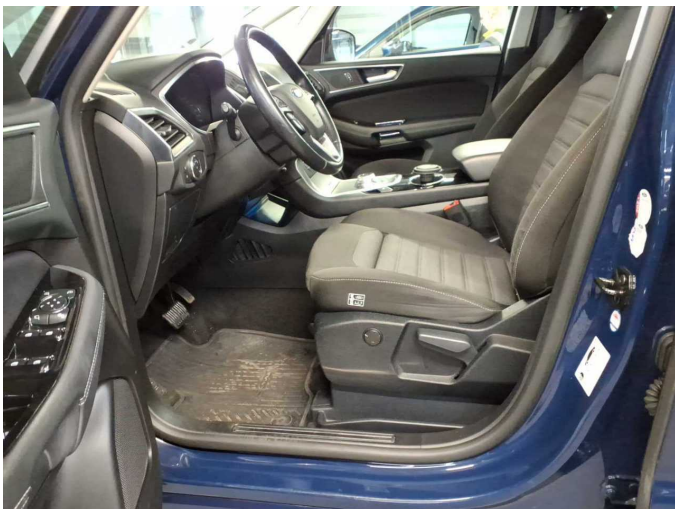


Figure 23: Misc.

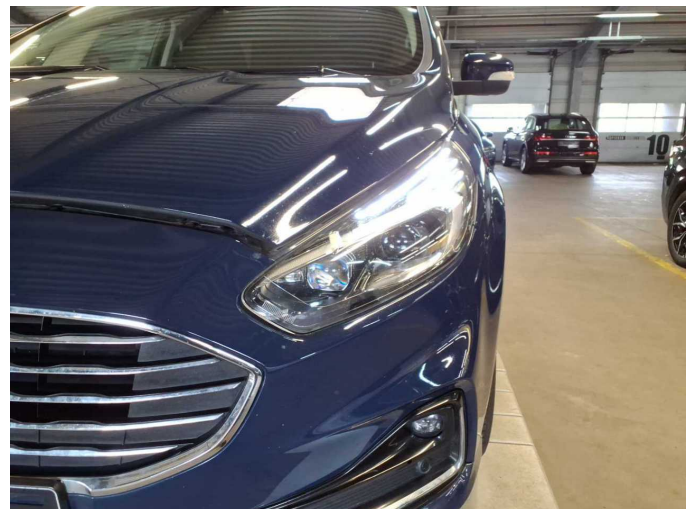


Figure 24: Misc.



Figure 25: Misc.



Figure 26: Misc.



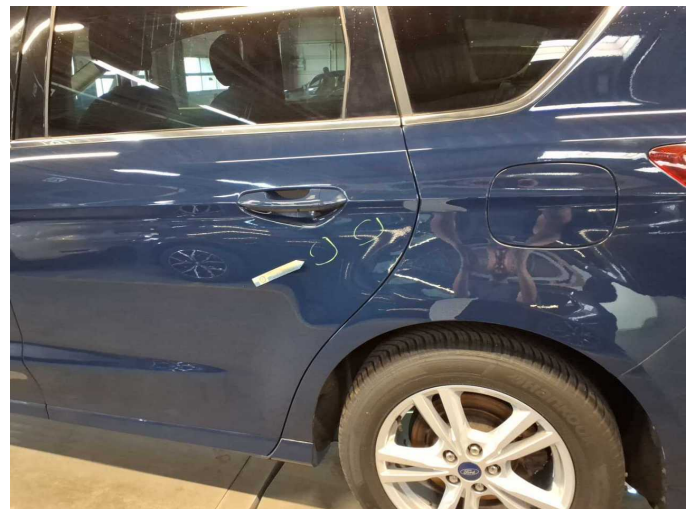
Figure 27: Misc.



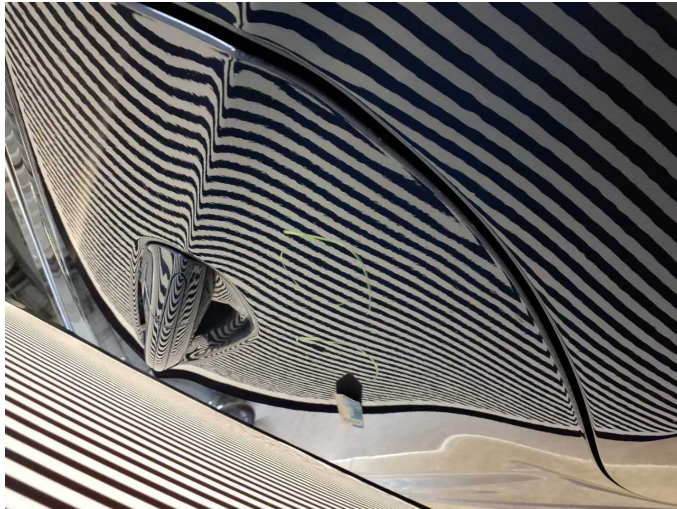
Figure 28: Misc.



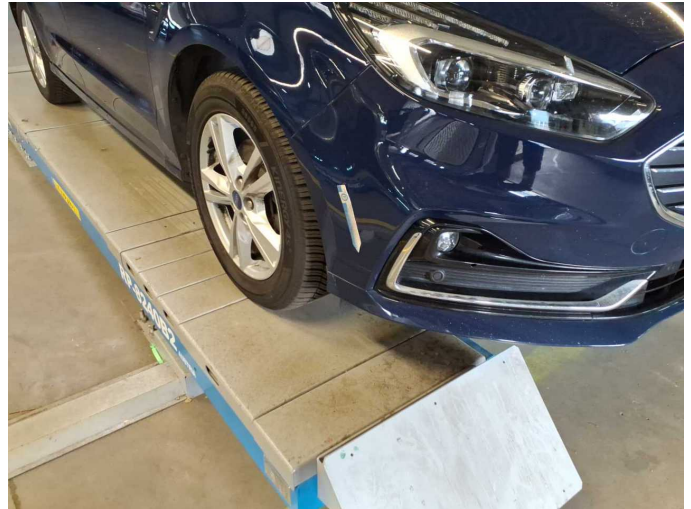
Damage 2: Equipment: Tirefit filler - Expired - Replace



Damage 3: Door - rear left side: Door - dent(s) - Smooth repair work



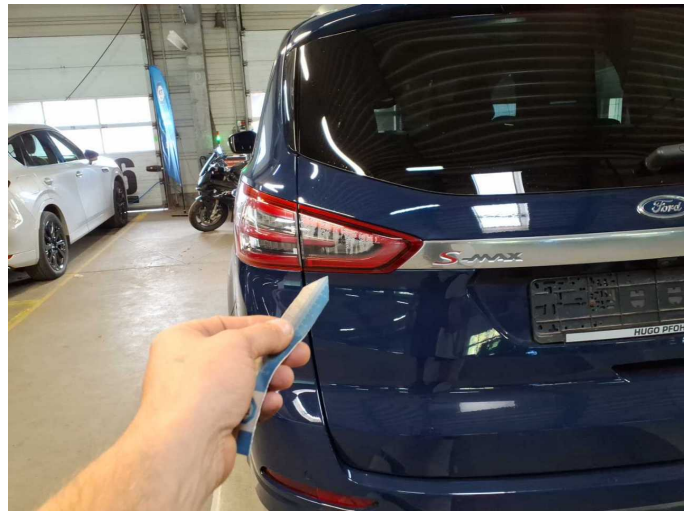
Damage 3: Door - rear left side: Door - dent(s) - Smooth repair work



Damage 4: Front bumper: Front bumper - Scratch(es) - Smart repair



Damage 4: Front bumper: Front bumper - Scratch(es) - Smart repair



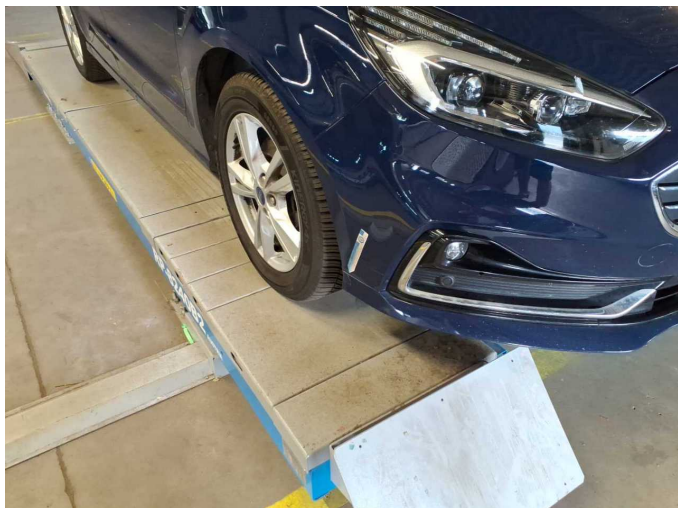
Damage 5: Tail light: Tail lamp - left side - Leaking - Replace



Damage 5: Tail light: Tail lamp - left side - Leaking - Replace



Damage 5: Tail light: Tail lamp - left side - Leaking - Replace



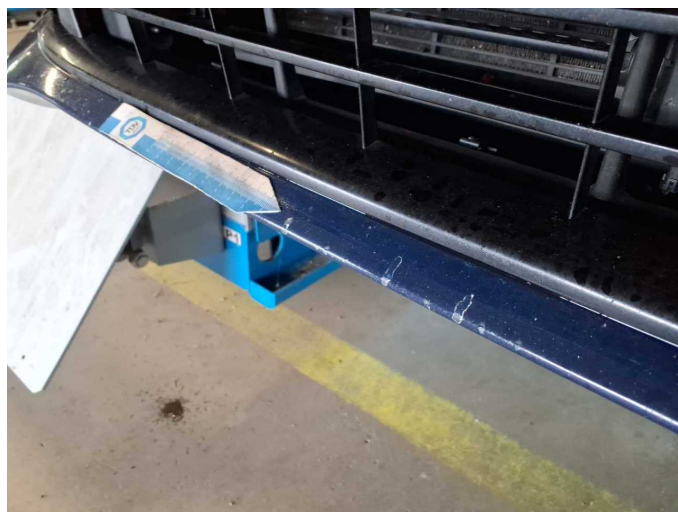
Damage 6: Front bumper: Spoiler (Lackmangel) - Stone chips - Paint



Damage 6: Front bumper: Spoiler (Lackmangel) - Stone chips - Paint



Damage 6: Front bumper: Spoiler (Lackmangel) - Stone chips - Paint



Damage 6: Front bumper: Spoiler (Lackmangel) - Stone chips - Paint



Damage 7: Bonnet: Bonnet (Steinschlag, Lackstift) - Unprofessionally repaired - Paint



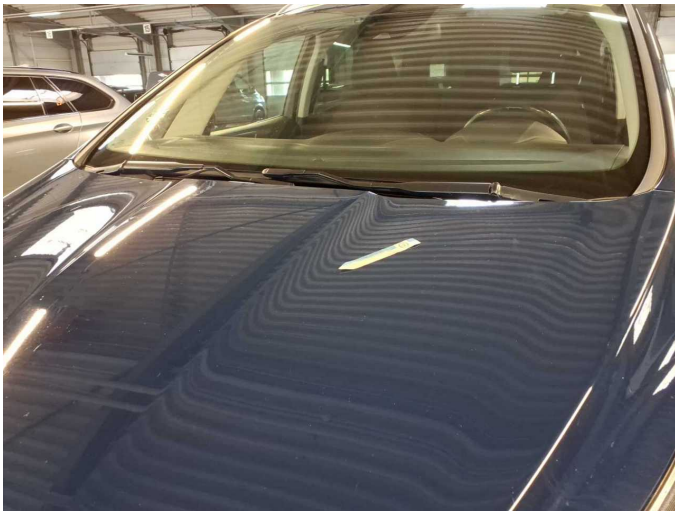
Damage 7: Bonnet: Bonnet (Steinschlag, Lackstift) - Unprofessionally repaired - Paint



Damage 7: Bonnet: Bonnet (Steinschlag, Lackstift) - Unprofessionally repaired - Paint



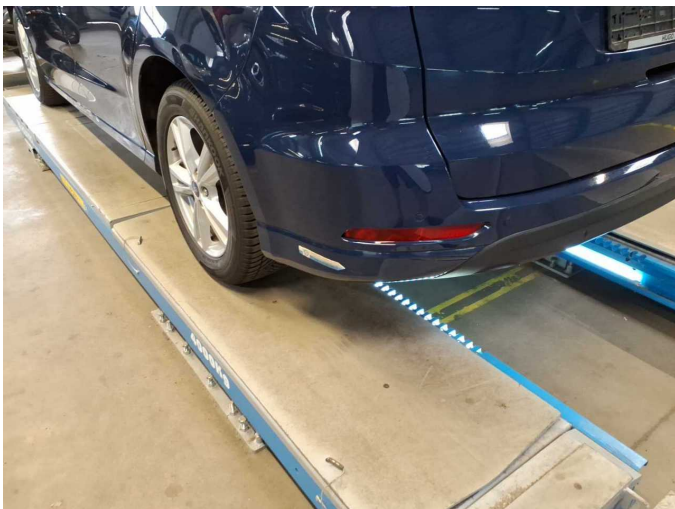
Damage 7: Bonnet: Bonnet (Steinschlag, Lackstift) - Unprofessionally repaired - Paint



Damage 7: Bonnet: Bonnet (Steinschlag, Lackstift) - Unprofessionally repaired - Paint



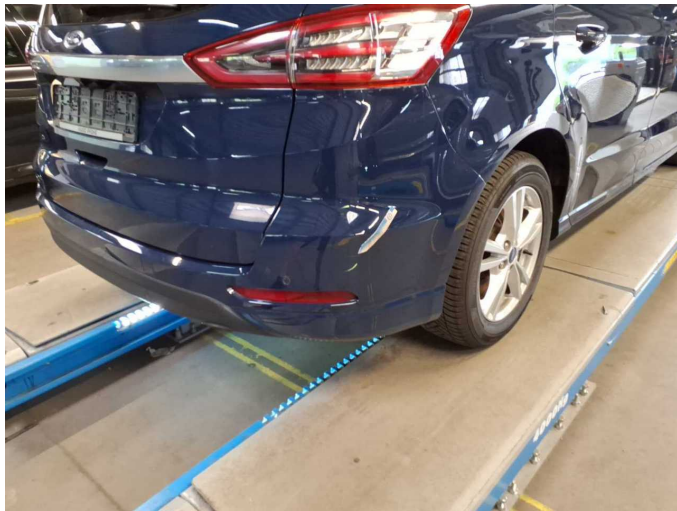
Damage 7: Bonnet: Bonnet (Steinschlag, Lackstift) - Unprofessionally repaired - Paint



Damage 8: Rear bumper: Rear bumper - Scratch(es) - Paint



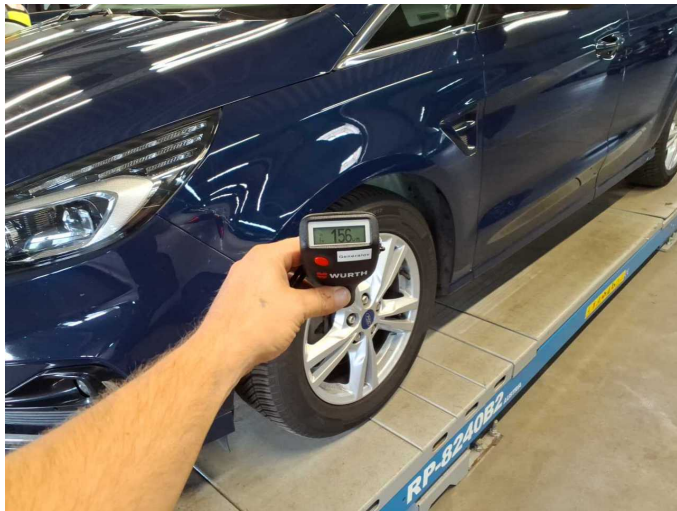
Damage 8: Rear bumper: Rear bumper - Scratch(es) - Paint



Damage 8: Rear bumper: Rear bumper - Scratch(es) - Paint



Damage 8: Rear bumper: Rear bumper - Scratch(es) - Paint



Repainting 1: Mudguard - left side



Repainting 2: Side panel - rear left side



Repainting 3: Side panel - rear right side



Repainting 4: Door - rear right side