



Expertise

Protocol number: 41440583
Order No. / Reference: 25137291-1
Inspection date: 5 Sept 2025

Manufacturer: Ford	Model: S-Max 2.0 EcoBlue Aut. TITANIUM
VIN: WF0JXXWPCJLY81489	



Vehicle details	
Manufacturer / Type / Model / Equipment	
Ford S-Max 2.0 EcoBlue Aut. TITANIUM	
Vehicle Identification number	WF0JXXWPCJLY81489
Mileage (Read)	190,698 km
First registration	8 Jan 2021
Number of holders	1
Power / Engine displacement	140 kw / 1,995 ccm
Fuel type / Cylinder	Diesel / 4
Gearbox / Number of gears	Automatic / 8
Type of drive	Front drive
Type of vehicle	Van
Colour / colour code	Frost-Weiß
Doors / Seats	5 / 7
Upholstery type	Cloth
Colour of upholstery	Anthracite-Black



Vehicle details

Maintenance booklet / proof	Available / complete	Next maintenance in	
Last maintenance on / at	06/2023 at 91,261 km		
Key is / should be	2 / 2	FZG documents	ZB#2 (B) was available (copy), ZB#1 (S) was not available
		Letter No.	FY049578
Previous damage / Accident	Detectable	Repainting	None detectable
Inspection conditions	sufficient	Lifting equipment / pit	yes
Test drive	Not performed	Engine function test	Performed
Manufacturer key number/ type code number	8566 / BQR 00195		
Emission standard	EURO6;WLTP;AP;PI/CI; M, N1 I	Fine dust sticker	
Permitted total weight	2,555 kg	Empty weight	

Tyres

Mounted tyres

#	Tyre size	Type of tyre	Manufacturer	Tread depth
1)	235/55 R17 103Y	Summer tyres on Light alloy	Dunlop	6mm / 6mm
2)	235/55 R17 103Y	Summer tyres on Light alloy	Dunlop	7mm / 7mm

Additional tyres

#	Tyre size	Type of tyre	Manufacturer	Tread depth
1)	235/55 R17 69H	Winter tyres on Light alloy	Continental	6mm / 6mm
2)	235/55 R17 69H	Winter tyres on Light alloy	Continental	7mm / 7mm

Replacement

Typ	Tyre size	Type of tyre	Manufacturer	Tread depth
	Tirefit	Expiration date 11/2024		

Legend: Tread depth information for tires on the left is in the first place, for tires on the right is in the second place on the axle in the direction of travel

Equipment

Standard equipment

- Shelves
- Ambient lighting at the front
- Exterior mirrors in body color, driver and passenger side, electrically adjustable and heated
- Brake light, third
- Roof rails "aluminum look"
- Twin-pipe exhaust system
- Driver information system display 25.4 cm color
- Electric windows front and rear
- Parking brake, electronic
- Ford Power start function with Ford Key Free system
- Luggage compartment lighting
- Transmission: 8-speed automatic transmission
- Rear window wiper
- Intelligent security system
- Electric child safety lock
- Radiator grille
- Leather gear knob
- Steering wheel: multifunction leather steering wheel
- Reading lights front and rear
- MyKey key system (individually programmable second key)
- Fog light
- Emergency brake light
- Parking pilot system front and rear
- Tire repair kit
- Taillights with LED technology
- Low beam headlights with switch-off delay including "welcome function"
- Seats: Driver and passenger seats, 4-way manually adjustable
- Seats: Front seats individually and variably heated
- 230 volt socket
- Bumpers painted in body color
- Trays on the front seat backrests
- Carpet floor mats "Premium" front and rear
- Unfastened seat belt warning system for the 1st and 2nd row of seats
- Cigarette lighter
- Airbag: Side airbags on the outer seats of the 2nd row
- Anti-lock braking system (ABS)
- Tires: 7.5 J x 17 alloy wheels (4) with 235/55 R 17 tires
- Hill start assist
- roof console
- Diesel particulate filter (DPF)
- tachometer
- Lane Assistant including Lane Keeping Assist and Fatigue Warning
- Ford Power start function
- Luggage compartment cover
- Cruise control system with intelligent speed limiter
- Back window, heater
- Interior lighting with delay circuit
- Isofix mount
- Air conditioning with automatic temperature control
- Paint finish: Uni
- Steering wheel: Steering column, adjustable in height and reach
- Front center console with padded armrest
- Ford navigation system including Ford SYNC 3 with AppLink, touchscreen, DAB/DAB+ and FordPass Connect
- Package: Winter
- Upholstery: Cloth
- Tire pressure monitoring system (TPMS)
- Windscreen wipers with rain sensor
- Headlight assistant with day/night sensor
- Electro-mechanical power steering
- Seats: Flexible seating system "FoldFlatSystem (FFS)"
- Seats: Front sports seats
- Start-stop system
- Power socket: 12-volt connection in the luggage compartment and center console
- Daytime running lights in LED technology
- Lashing eyes in the luggage compartment
- Immobiliser
- Central locking with remote control

Extra equipment



- Paint finish: Frost White
- Safety partition net, behind the 2nd row of seats
- Seats: Ford ergonomic seat
- Side windows from 2nd row and rear window, dark tinted
- Sun blinds in the rear side doors (manual)
- Tires: 7.5 J x 17 alloy wheels (4) with 235/55 R 17 tires (10x2-spoke design in Pearl Grey Premium paint)
- Trailer hitch, electrically pivoting (including ESP trailer stabilization)
- Package: Business III (Automatic) (Sony Navigation including Ford SYNC 3, AppLink, touchscreen, voice control, radio-CD player, MP3-capable, 2 USB ports, 390-watt premium sound system, 12 speakers, steering wheel remote control, Bluetooth hands-free system, FordPass Connect, eCall DAB/DAB+, adaptive LED headlights with anti-glare high beam, ACC, traffic jam assist, pre-collision assist, forward collision warning, emergency brake assist, front and rear view camera, blind spot assist, cross traffic alert, dynamic distance detection, electric and sensor-controlled tailgate, Ford Key Free, park assist)

Brief expert findings

Documents submitted	At the time of the inspection, the registration certificate Part 2 (letter) was available, but the registration certificate Part 1 (certificate) was not. (Copy)
VIN comparison	The vehicle identification number (VIN) was read from the vehicle and its conformity with the submitted documents was verified during the inspection by the undersigned.
Inspection	The inspection conditions were sufficient for the assessment of the vehicle. Lifting equipment and a pit were available for examining the vehicle.
Test drive	No test drive/maneuvering was carried out during the inspection of the vehicle.
Engine function test	An engine test run was performed.

Value reducing factors

No.	Component group	Description
1	Misc.	Inspection / maintenance - No evidence - No deduction
2	Misc.	Main inspection - No evidence - No deduction
3	Equipment	Tirefit filler - Expired - Replace
4	Roof	Roof rail - left side - Scratch(es) - Smart repair
5	Bonnet	Bonnet - Stone chips - Paint
6	Front bumper	Front bumper - Stone chips - Paint
7	Side panel - rear left side	Side panel - Scratched - Paint

Wear and tear

No.	Component group	Description
1	Vehicle glazing	Windscreen with lane departure assistant - Stone chips - No deduction
2	Boot lid / rear door	Boot lid - dent(s) - Smooth repair work
3	Door - rear left side	Door edge - Scratch(es) - Smart repair
4	Door - front left side	Door edge - Scratch(es) - Smart repair
5	Body	Body (Flugrost) - Soiled - No deduction

The vehicle shows signs of wear commensurate with its age and use.

Accident damages

No. Accident

- 1 Side right



Order/Scope of order

The order was placed to prepare a sales report for the vehicle described. This includes the following:

- Description of core relevant information about the vehicle
- Documentation of equipment features
(*Delivery by third-party service providers*)
- Documentation of damage, defects, missing parts
- Documentation of previous damage, unrepaired previous damage, repainting
- a brief visual or functional inspection of the equipment details if possible.
(*Functional tests of driver assistance systems are not included in the scope of services!*)
- a photo documentation of the vehicle

Basis for the order

This product is based on the Alphabet Fuhrpark GmbH guidelines for vehicle returns and valuations. The expert makes the explicit findings in each individual case objectively within the framework of the specified standards based on his or her own expertise.

The vehicle inspection takes place in a disassembled state.

Damage or defects that can only be detected during disassembly/diagnosis work or through advanced knowledge remain within the scope of the prognosis risk. An extended risk exists for concealed defects caused by fraudulent deception and not identifiable by the expert.

Damage or defects resulting from normal use or wear and tear of the vehicle will be accepted according to the applicable standard.

There was no explicit identification or monetary consideration of the expected features within the product.

Features which in their nature and severity slightly exceed normal use but do not constitute unacceptable damage will be documented and identified under signs of use if necessary.

Damage or defects which, according to the underlying standard, can no longer be attributed to normal use or wear and tear are listed in the product under "Depreciating Factors".

Depending on the product specification, a monetary ID can be provided. If this takes place, the costs can be 100% d or pro rata depending on the vehicle's age and mileage.

Previous damages

Non-repaired previous damages were found at the vehicle. The necessary repair costs are listed in the expert report or if necessary, are listed in detail in a separately enclosed repair cost calculation.

Comments

Die beigefügte Reparaturkostenkalkulation wurde nach bestem Wissen und Gewissen unter eingeschränkten Besichtigungsbedingung im demontagefreien Zustand und vorliegendem Bildmaterial erstellt. Es können aufgrund verdeckter Beschädigung erhebliche Mehrkosten und somit Abweichung der für den Unfall ausgewiesenen Reparaturkosten nicht ausgeschlossen werden.



Figure 1: Diagonal front (left)



Figure 2: Diagonal front (right)



Figure 3: Diagonal rear (left)



Figure 4: Diagonal rear (right)



Figure 5: Interior - front



Figure 6: Interior - rear



Figure 7: Instrument cluster



Figure 8: Instrument panel



Figure 9: Interior 360° view ([Online link](#))



Figure 10: Cargo area



Figure 11: VIN



Figure 12: Mounted tyres

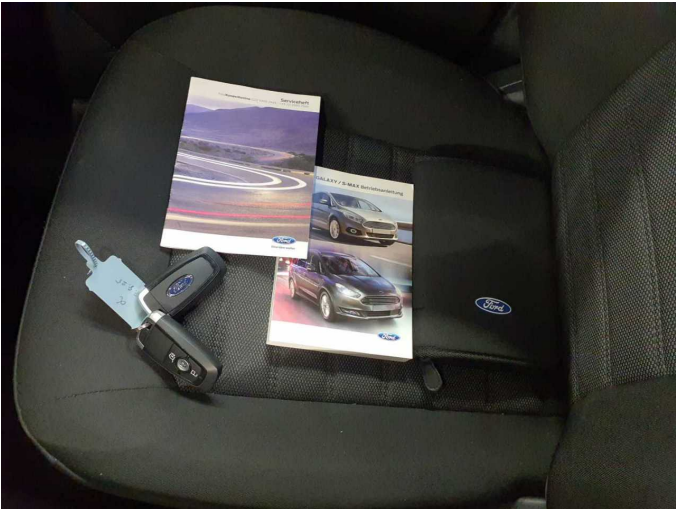


Figure 13: Documents



Figure 14: Additional tyres



Figure 15: Navigation



Figure 16: Misc.



Figure 17: Misc.

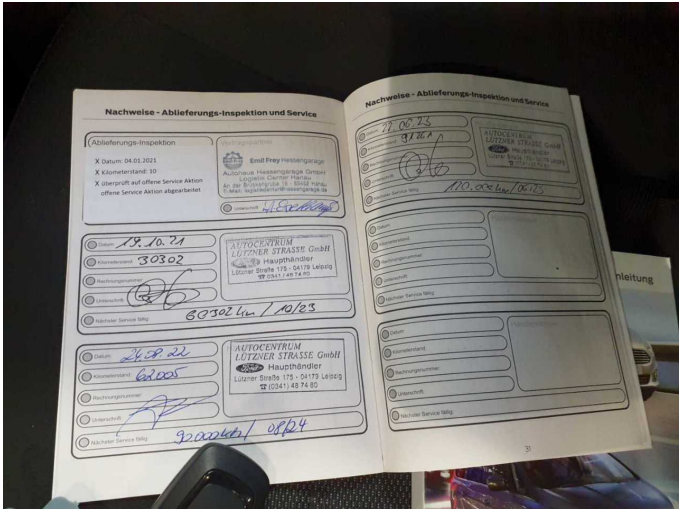


Figure 18: Misc.



Figure 19: Misc.

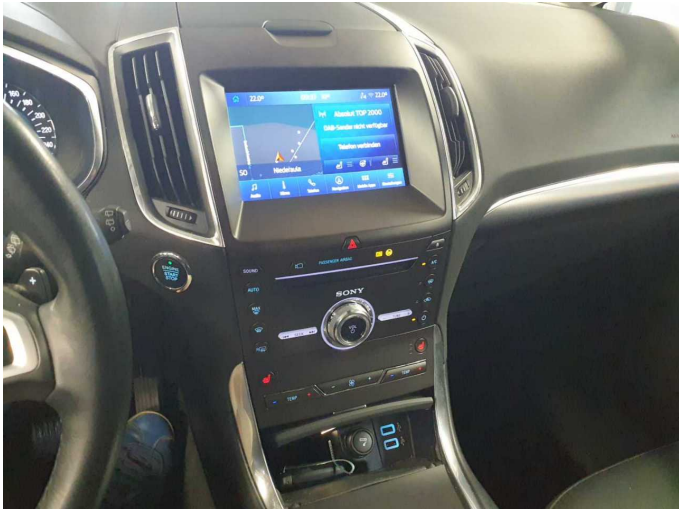


Figure 20: Misc.



Figure 21: Misc.



Figure 22: Misc.



Figure 23: Misc.



Figure 24: Misc.



Figure 25: Misc.

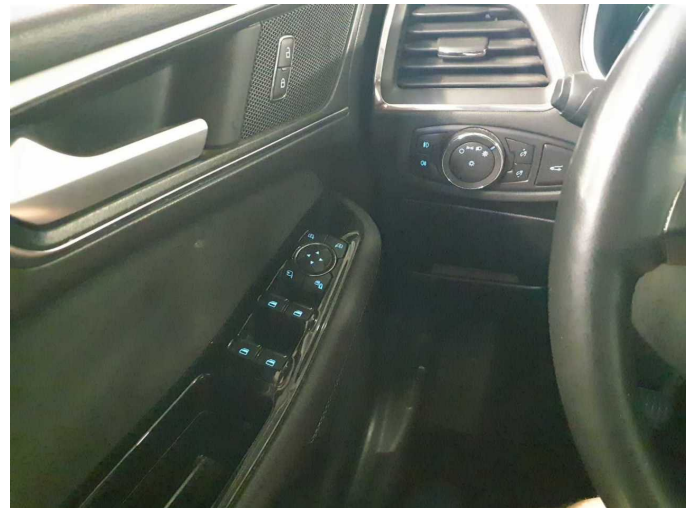


Figure 26: Misc.



Figure 27: Misc.

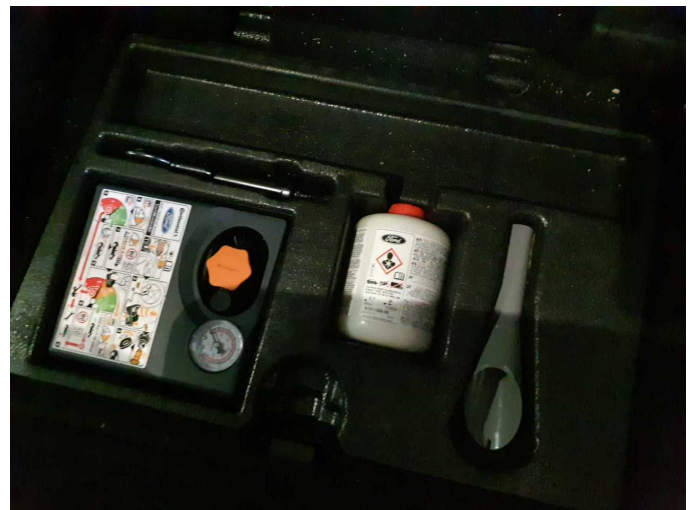


Figure 28: Misc.

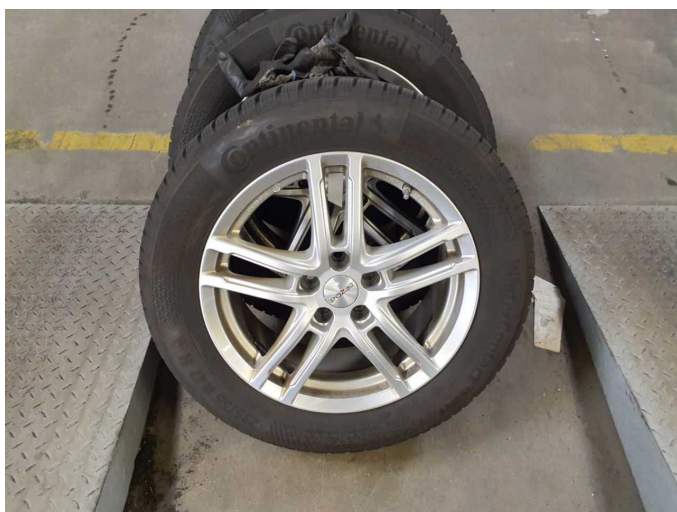
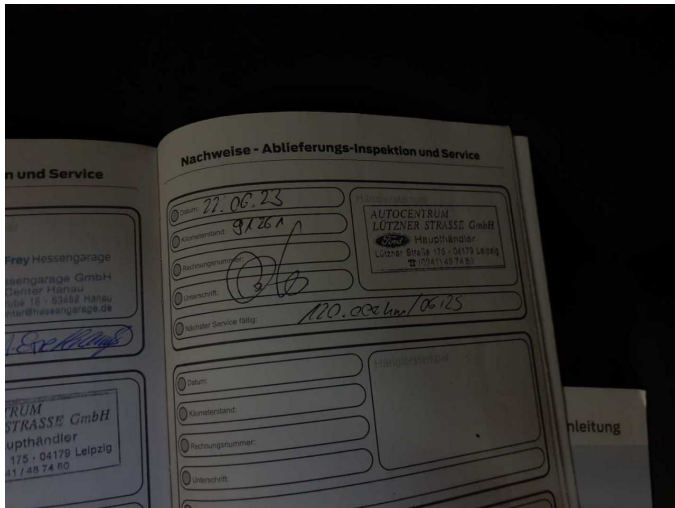


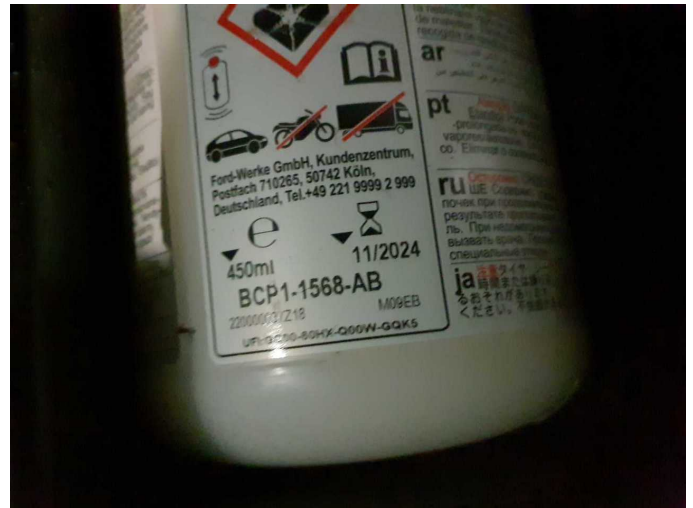
Figure 29: Misc.



Damage 1: Misc.: Inspection / maintenance - No evidence - No deduction



Damage 1: Misc.: Inspection / maintenance - No evidence - No deduction



Damage 3: Equipment: Tirefit filler - Expired - Replace



Damage 4: Roof: Roof rail - left side - Scratch(es) - Smart repair



Damage 4: Roof: Roof rail - left side - Scratch(es) - Smart repair



Damage 5: Bonnet: Bonnet - Stone chips - Paint



Damage 5: Bonnet: Bonnet - Stone chips - Paint



Damage 5: Bonnet: Bonnet - Stone chips - Paint



Damage 5: Bonnet: Bonnet - Stone chips - Paint



Damage 6: Front bumper: Front bumper - Stone chips - Paint



Damage 6: Front bumper: Front bumper - Stone chips - Paint



Damage 6: Front bumper: Front bumper - Stone chips - Paint



Damage 6: Front bumper: Front bumper - Stone chips - Paint



Damage 7: Side panel - rear left side: Side panel - Scratched - Paint



Damage 7: Side panel - rear left side: Side panel - Scratched - Paint



Damage 7: Side panel - rear left side: Side panel - Scratched - Paint



Wear and tear 2: Boot lid / rear door: Boot lid - dent(s) - Smooth repair work



Wear and tear 2: Boot lid / rear door: Boot lid - dent(s) - Smooth repair work



Wear and tear 3: Door - rear left side: Door edge - Scratch(es) - Smart repair



Wear and tear 3: Door - rear left side: Door edge - Scratch(es) - Smart repair



Wear and tear 3: Door - rear left side: Door edge - Scratch(es) - Smart repair



Wear and tear 4: Door - front left side: Door edge - Scratch(es) - Smart repair



Wear and tear 4: Door - front left side: Door edge - Scratch(es) - Smart repair



Accident 1: Side right



Accident 1: Side right



Accident 1: Side right



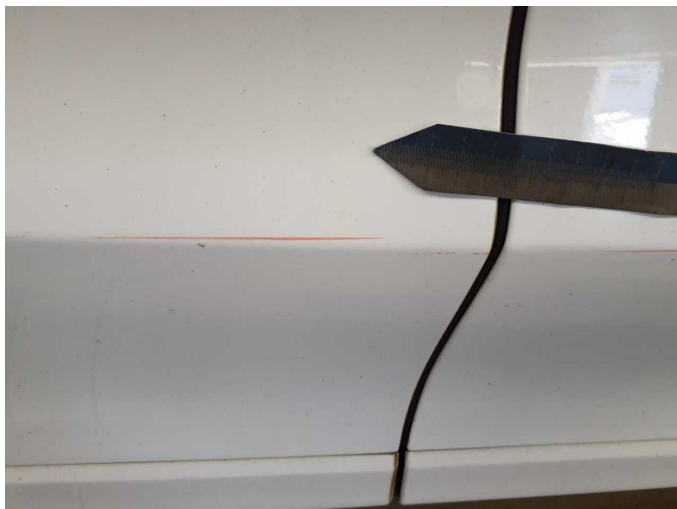
Accident 1: Side right



Accident 1: Side right



Accident 1: Side right



Accident 1: Side right



Accident 1: Side right



Accident 1: Side right



Accident 1: Side right



Accident 1: Side right



Accident 1: Side right



Accident 1: Side right