



FORD S-Max

S-Max 2.0 EcoBlue Aut.

VIN NO WF0JXXWPCJKM39837
Registration Number PCJKM39837



MOT Date	Number of Owners	Number of Keys	Odometer Reading
2025-05-01	1	2	150806 km
Last Service	Last Service Mileage	First Registration Date	Country First Registered
2024-05-08	112846	2020-01-23	Germany

Inspection Report Summary

Customer	BCA Online	Report Number	P20250820085005
Inspection Date / Place	2025-08-20 / BCA Neuss	Cosmetic Grade	5

Vehicle Summary

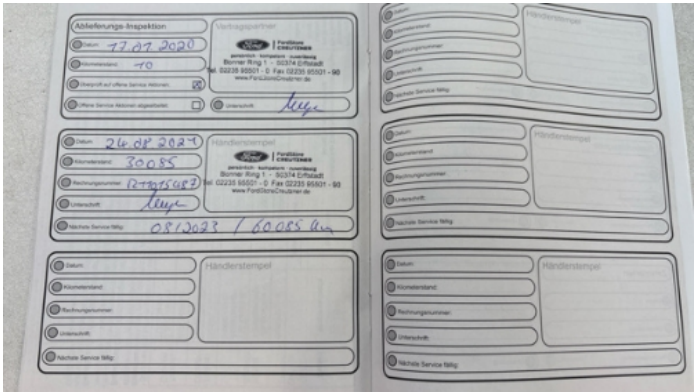
Vehicle Condition	Runner	VAT Type	Qualifying
Fuel Type	Diesel	Road Worthy	No
Colour	Black	Engine Size (cc)	1998
Engine Size	2.0	No of Doors	5
Body Type	Stationwagon / Estate	Drive Train	Front
Seat Colour		No of Seats	5
Seat Covering Name	Schwarz	Seat Covering	Cloth
Charging Cables		NEDC CO2 Rating (q/km)	142
Gearbox Type	Automatic		

Vehicle History & Documents

Service Book Available	Present	Next Service Mileage	km
Previous Usage		Imported	No
Manufacturer Warrenty			







Equipment

Tinted Glass	USB Socket	Alloys wheels	Bluetooth telephone interface
Diesel particulate filter	Remote adjusting wing mirrors	Reversing Camera	Satellite navigation
CD - multichanger	Electric tailgate	LED Headlamps	Rear parking sensors
Trip Computer	Airbag Status	Anti-lock braking	Cruise control
Front parking sensors	Remote central locking	Roof rails	Stability control
Electrically folding wing mirrors	Leather steering wheel	Radio	

Equipment Details

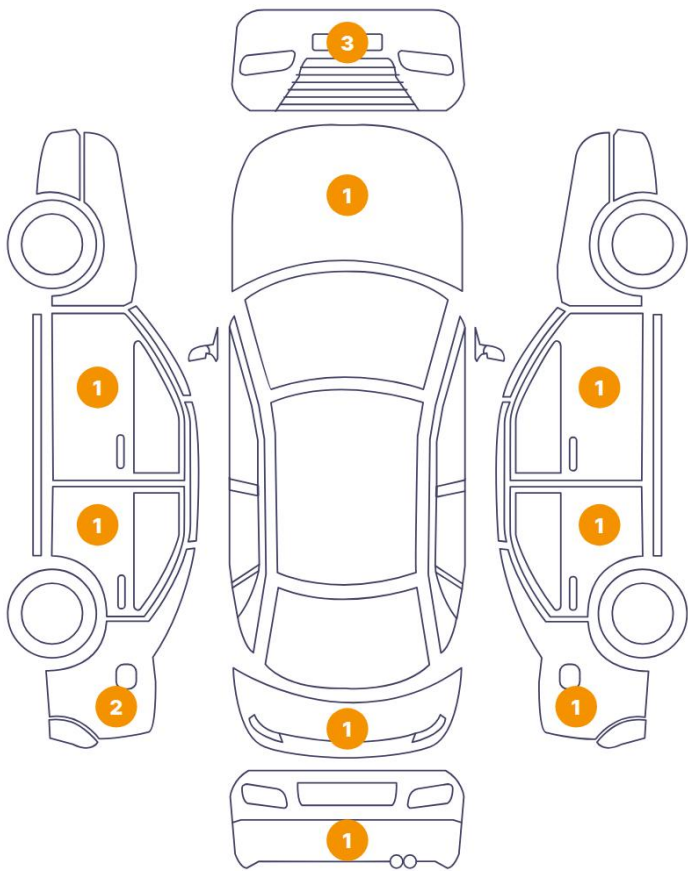
Air Conditioning	Dual Zone Climate Control	Alloy Wheel Size	19
Seat Heating	Front		

Wheels & Tyres

Right Front Tyre Depth	5	Left Front Tyre Depth	5
Right Rear Tyre Depth	5	Left Rear Tyre Depth	5

Cosmetic Damage

13 Schäden



0 Schäden



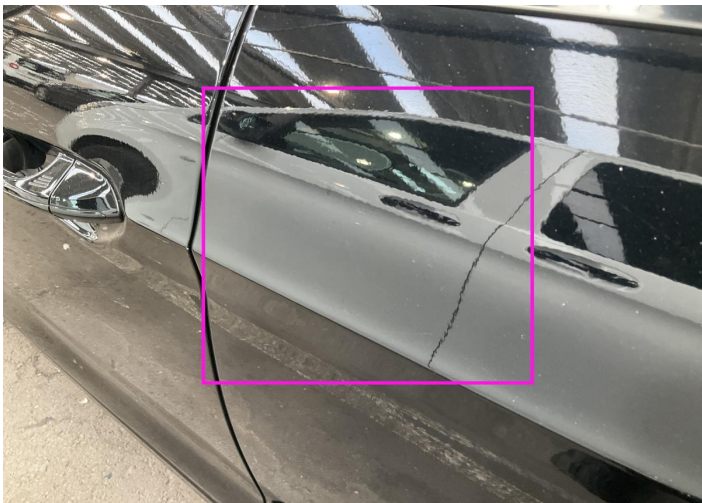
Component		Damage	Comments
1	Door / Front Left	Paint / Scratch / Scuff	
2	Door / Back Left	Paint / Scratch / Scuff	
3	Side Panel / Back Left	Bodywork / Dent / Dent	
4	Side Panel / Back Left	Bodywork / Dent / Dent	
5	Tailgate	Paint / Scratch / Scuff	
6	Bumper / Back	Paint / Scratch / Scuff	
7	Side Panel / Back Right	Bodywork / Dent / Dent	
8	Door / Back Right	Paint / Scratch / Scuff	
9	Door / Front Right	Bodywork / Dent / Dent	
10	Bumper / Front	Bodywork / Breakage / Crack	
11	Bumper / Front	Paint / Scratch / Scuff	
12	Bumper / Front	Paint / Scratch / Scuff	

13 Hood

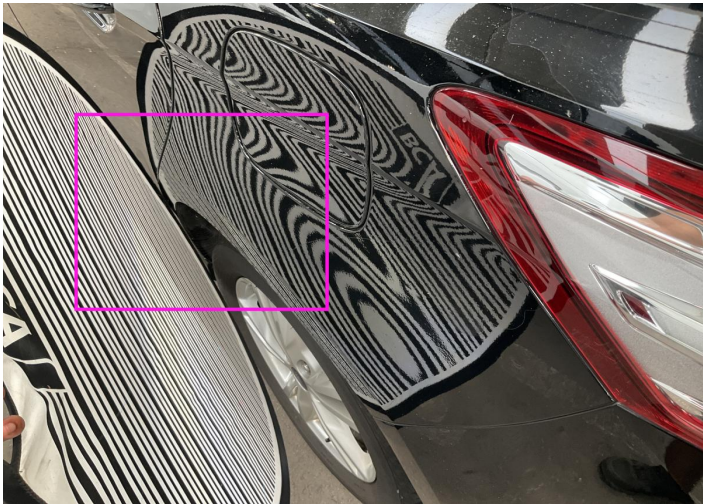
Paint / Stone Chip



1. Door / Front Left
Paint / Scratch / Scuff -



2. Door / Back Left
Paint / Scratch / Scuff -



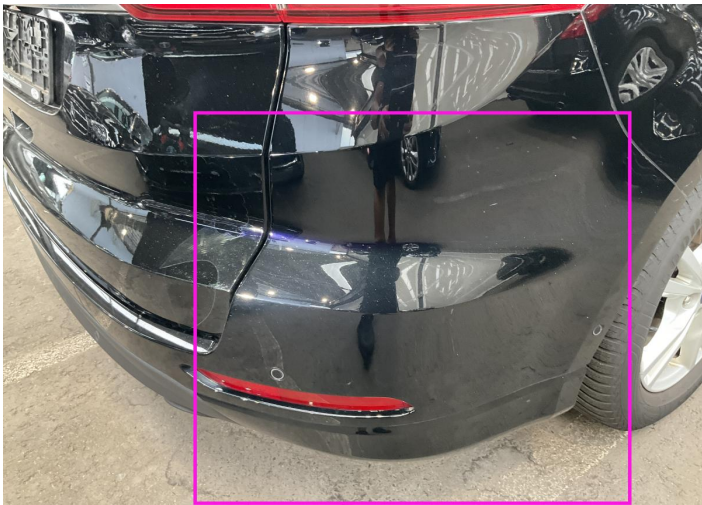
3. Side Panel / Back Left
Bodywork / Dent / Dent -



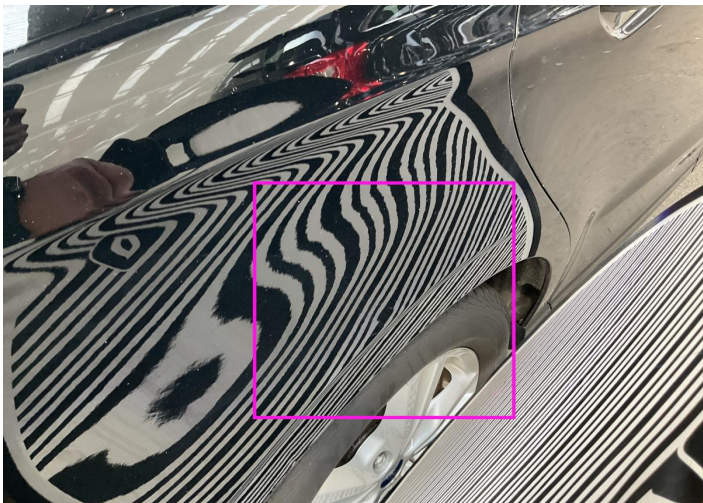
4. Side Panel / Back Left
Bodywork / Dent / Dent -



5. Tailgate
Paint / Scratch / Scuff -



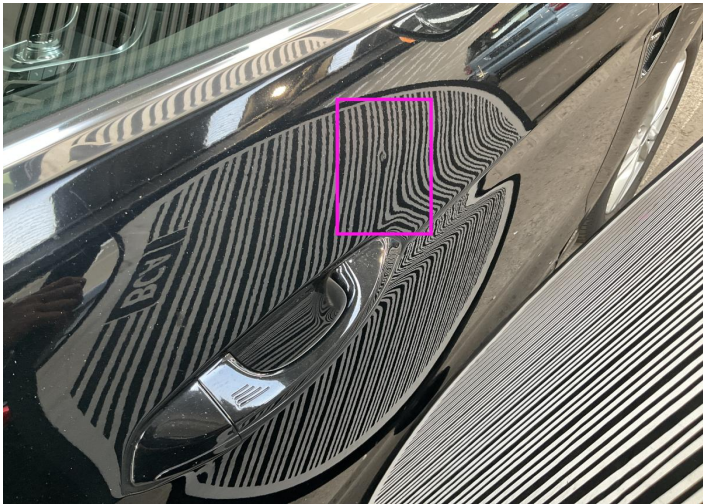
6. Bumper / Back
Paint / Scratch / Scuff -



7. Side Panel / Back Right
Bodywork / Dent / Dent -



8. Door / Back Right
Paint / Scratch / Scuff -



9. Door / Front Right
Bodywork / Dent / Dent -



10. Bumper / Front
Bodywork / Breakage / Crack -



11. Bumper / Front
Paint / Scratch / Scuff -



12. Bumper / Front
Paint / Scratch / Scuff -



13. Hood
Paint / Stone Chip -

Mechanical Condition

Control Lights

Display Defect	✓	ABS Warning Light	✓
Oil Pressure Warning Light	✓	Airbag Warning Light	✓
Brake Warning Light	✓	Power Steering Warning Light	✓
Diesel Particulate Filter Light	✓	ESP Fault/Traction Control Malfunction Light	✓
Alternator / Battery	✓	No Dashboard Lights	✓
Service Light	!		

Engine

Engine Leak Visible	✓	Engine Starts	✓
Engine Status / EML	!		

Levels

Coolant Fluid	✓	Brakes Fluid	✓
---------------	---	--------------	---

Equipments Test

Electric Windows	✓	Audio Equipment	✓
Navigation System	✓	AC / Heating System	✓
Parking Sensors / Cameras Functioning	✓		

Gearbox

Gear Box	✓
----------	---

Test Drive Inspection

Engine			
Fume Quantity	✓	Engine Noise	✓
The Gears Scratch / Skip / Abnormal Operation	✓	Power Loss	✓
Steering Wheel			
Steering Noise / Anomaly	✓		
Brake			
Brake System Anomaly	✓		
Gearbox			
Automatic Shift	✓		
General			
Test Driven Status	✓		
✓ No troubles detected, good condition or correct tests, according to vehicle age and mileage			
! Damages or malfunction detected that requires repairs by the buyer			
NA Not applicable			
☐ Not tested			

Disclaimer

Please also note the "UserGuide condition report", which shows the scope of the vehicle description.

[User Guide](#)