



# FORD Mondeo

## Mondeo Turnier 2.2 TDCi Aut.

VIN NO WF0GXXGBBGBT55217

Registration Number BBGBT55217



MOT Date

2026-08-01

Last Service



Number of Owners

3

Last Service Mileage



Number of Keys

2

First Registration Date

2011-09-27

Odometer Reading

302471 km

Country First Registered

Germany

### Inspection Report Summary

Customer	BCA Online	Report Number	P20250925111656
Inspection Date / Place	2025-09-30 / HARTMANN Compound-Professionals GmbH Dorfmark	Cosmetic Grade	3

### Vehicle Summary

Vehicle Condition	Runner	VAT Type	Margin
Fuel Type	Diesel	Road Worthy	Yes
Colour	Black	Engine Size (cc)	2179
Engine Size	2.2	No of Doors	5
Body Type	Stationwagon / Estate	Drive Train	Front
Seat Colour		No of Seats	5
Seat Covering Name	Schwarz	Seat Covering	Cloth/Synthetic Leather
Charging Cables		NEDC CO2 Rating (q/km)	173
Gearbox Type	Automatic		

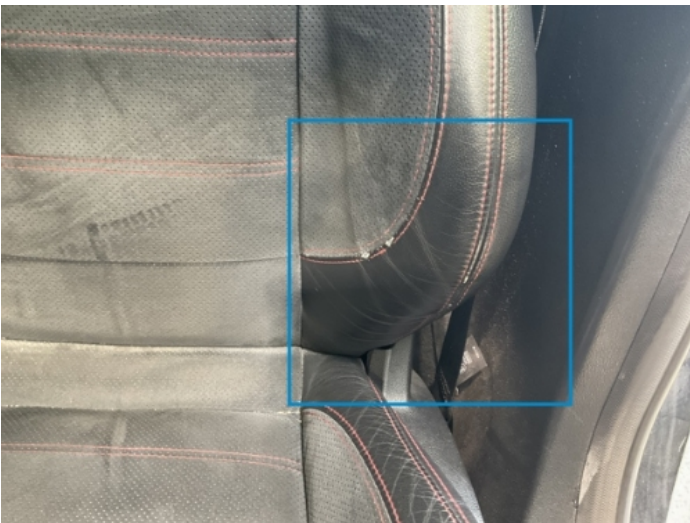
### Vehicle History & Documents

Service Book Available	Missing	Next Service Mileage	km
Previous Usage		Imported	No
Manufacturer Warrenty			









### Equipment

Tinted Glass	Trip Computer	Alloys wheels	Bluetooth telephone interface
Front fog lamps	Headlamp wash/wipe	Remote adjusting wing mirrors	Roof rails
Stability control	CD Player	Electrically adjustable seats	Leather steering wheel
Rear parking sensors	Tow ball	Airbag Status	Anti-lock braking
Cruise control	Front parking sensors	Heated windscreen	Remote central locking
Satellite navigation	Xenon headlamps	Central locking	Electrically folding wing mirrors
Radio			

### Equipment Details

Tow Ball Type	Static	Air Conditioning	Dual Zone Climate Control
Alloy Wheel Size	18	Extra Wheel / Tyre Set	Winter Tyres - Alloy
Seat Heating	Front		

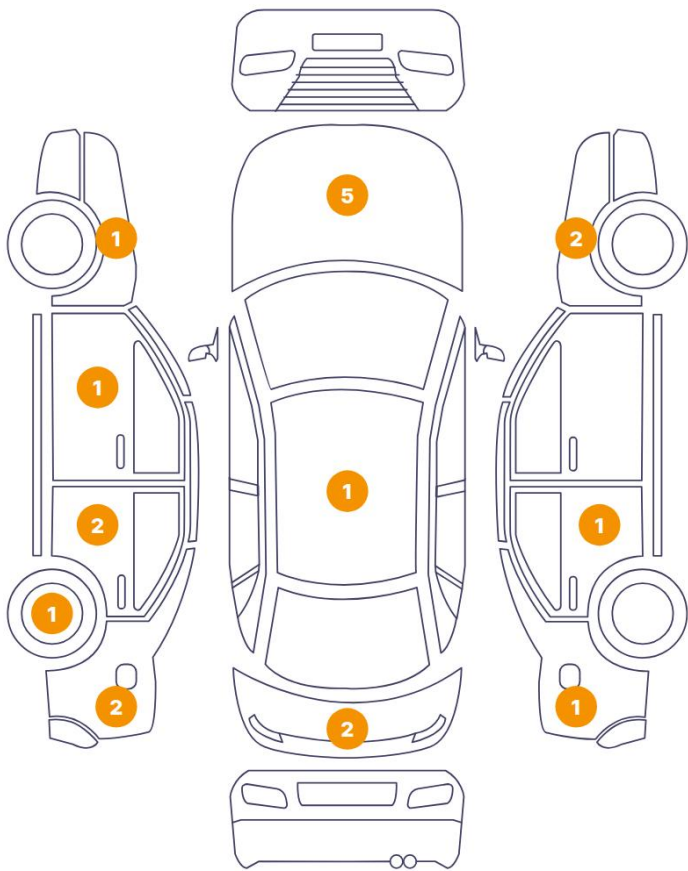
### Wheels & Tyres

Extra Wheel - 1 Tyre Depth	7	Extra Wheel - 2 Tyre Depth	6
Extra Wheel - 3 Tyre Depth	5	Extra Wheel - 4 Tyre Depth	4
Right Front Tyre Depth	2	Left Front Tyre Depth	2
Right Rear Tyre Depth	4	Left Rear Tyre Depth	4

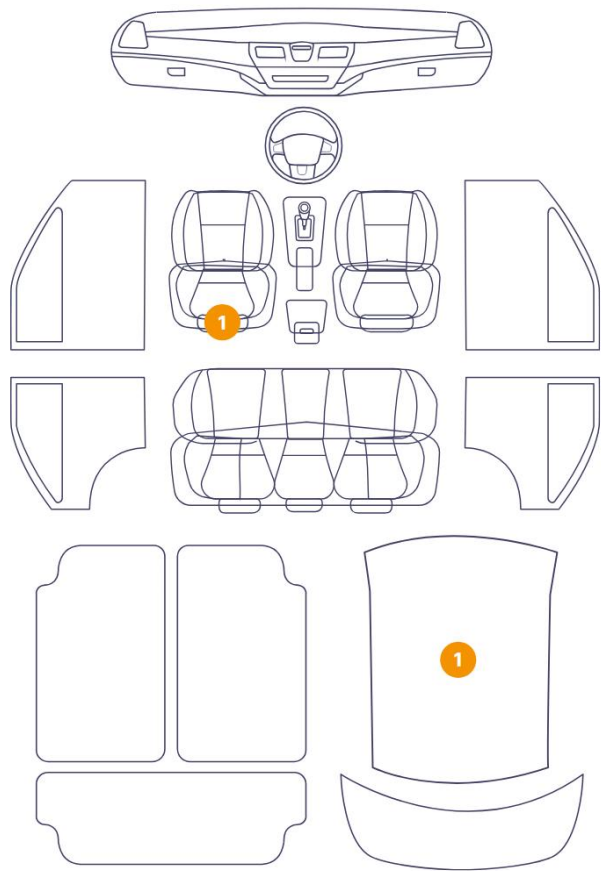


Cosmetic Damage

19 Damages



2 Damages



Component		Damage	Comments
1	Hood Scoop	Bodywork / Breakage / Crack	
2	Hood	Bodywork / Dent / Dent	
3	Hood	Paint / Chipping	
4	Hood	Paint / Chipping	
5	Hood	Bodywork / Dent / Dent	
6	Fender / Front Right	Bodywork / Dent / Dent	
7	Fender / Front Right	Paint / Scratch / Scuff	
8	Door / Back Right	Paint / Scratch / Scuff	
9	Fender / Back Right	Bodywork / Dent / Dent	
10	Monogram/Emblem / Back Center	Missing Part	
11	Tailgate	Paint / Scratch / Scuff	
12	Side Panel / Back Left	Bodywork / Dent / Dent	

13	Fender / Back Left	Paint / Scratch / Scuff
14	Rim / Back Left	Out of Bodywork / Scratch
15	Door / Back Left	Paint / Chipping
16	Door / Back Left	Paint / Scratch / Scuff
17	Door / Front Left	Paint / Scratch / Scuff
18	Fender / Front Left	Bodywork / Dent / Dent
19	Roof	Bodywork / Dent / Deformation
20	Roof Upholstery	Interior / Broken
21	Seat / Front Left	Interior / Stained



1. Hood Scoop  
Bodywork / Breakage / Crack -



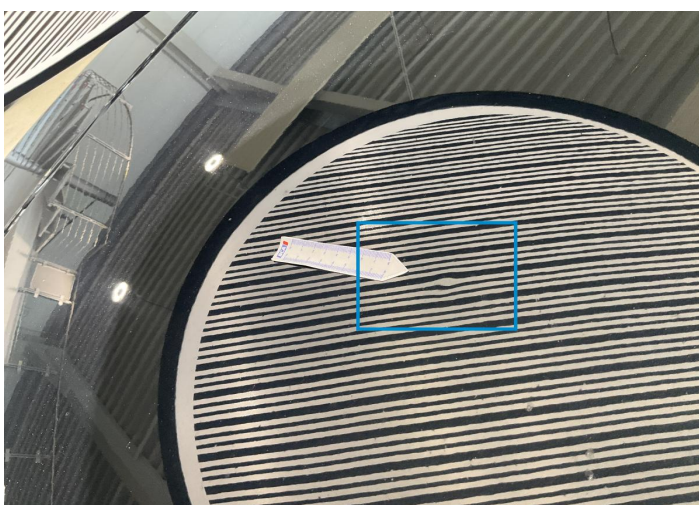
2. Hood  
Bodywork / Dent / Dent -



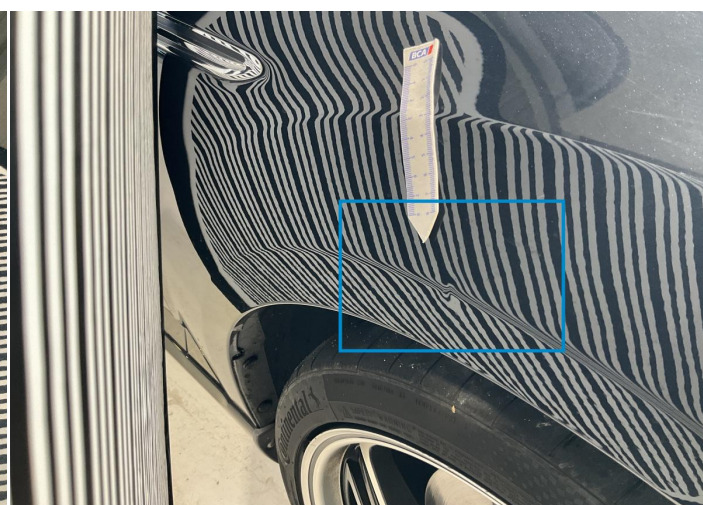
3. Hood  
Paint / Chipping -



4. Hood  
Paint / Chipping -

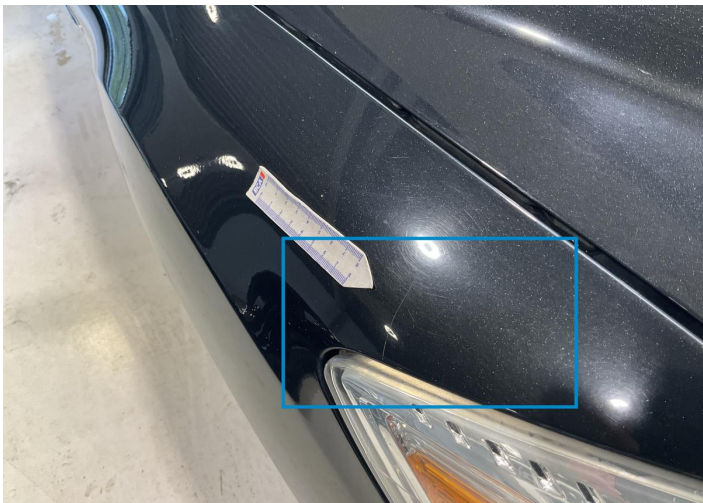


5. Hood  
Bodywork / Dent / Dent -



6. Fender / Front Right  
Bodywork / Dent / Dent -

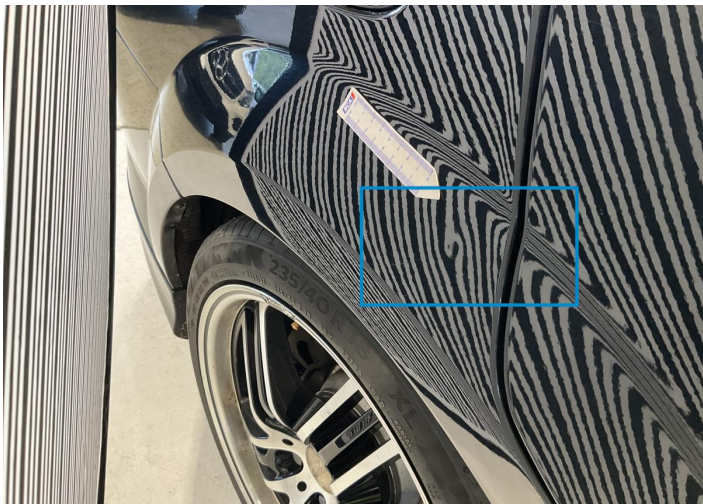




7. Fender / Front Right  
Paint / Scratch / Scuff -



8. Door / Back Right  
Paint / Scratch / Scuff -



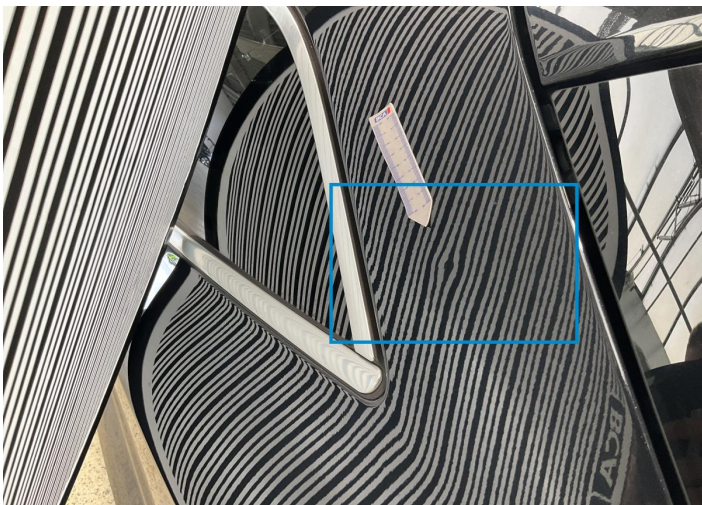
9. Fender / Back Right  
Bodywork / Dent / Dent -



10. Monogram/Emblem / Back Center  
Missing Part -



11. Tailgate  
Paint / Scratch / Scuff -



12. Side Panel / Back Left  
Bodywork / Dent / Dent -





13. Fender / Back Left  
Paint / Scratch / Scuff -



14. Rim / Back Left  
Out of Bodywork / Scratch -



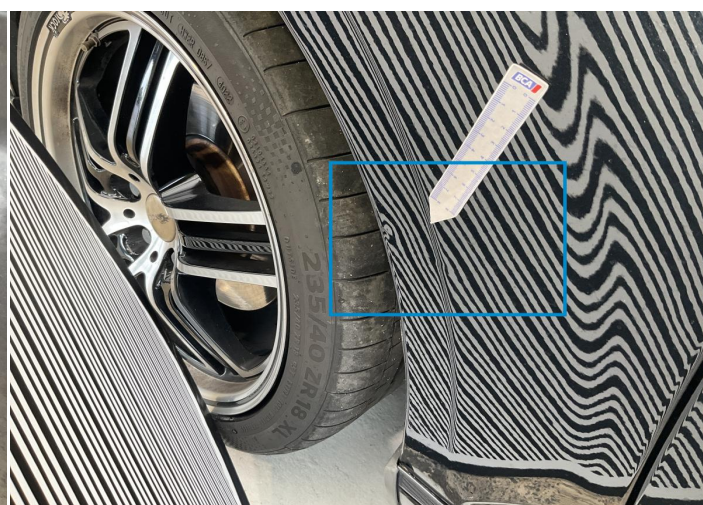
15. Door / Back Left  
Paint / Chipping -



16. Door / Back Left  
Paint / Scratch / Scuff -

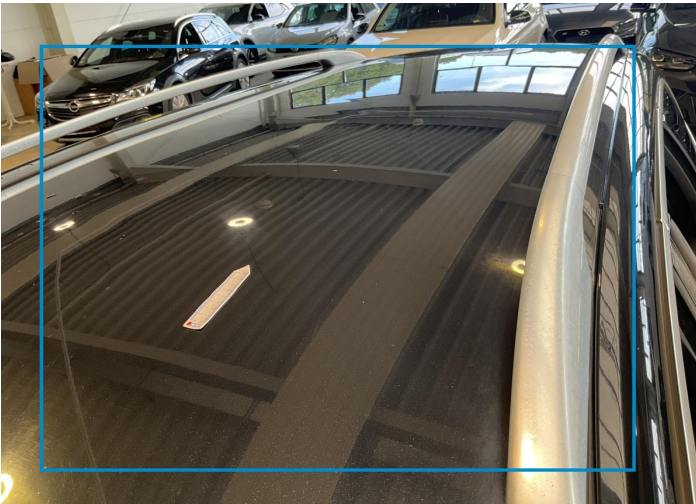


17. Door / Front Left  
Paint / Scratch / Scuff -



18. Fender / Front Left  
Bodywork / Dent / Dent -





19. Roof  
Bodywork / Dent / Deformation -



20. Roof Upholstery  
Interior / Broken -



21. Seat / Front Left  
Interior / Stained -



## Mechanical Condition

### Control Lights

ABS Warning Light	✓	ESP Fault/Traction Control Malfunction Light	✓
Airbag Warning Light	✓	Oil Pressure Warning Light	✓
Brake Warning Light	✓	Alternator / Battery	✓
No Dashboard Lights	✓	Display Defect	✓
Service Light	✓		

### Engine

Engine Status / EML	✓	Engine Leak Visible	✓
Engine Starts	✓		

### Equipments Test

Central Locking	✓	Main & Spare Keys Functioning	✓
Electric Windows	✓	Navigation System	✓
Audio Equipment	✓	Parking Sensors / Cameras Functioning	✓
Other Equipments	✓		

### Levels

Brakes Fluid	✓	Coolant Fluid	✓
--------------	---	---------------	---

## Test Drive Inspection

Engine			
Fume Quantity	✓	Engine Noise	✓
The Gears Scratch / Skip / Abnormal Operation	✓	Power Loss	✓
Brake			
Brake System Anomaly	✓		
Steering Wheel			
Steering   Noise / Anomaly	!		
General			
Test Driven Status	✓		
✓ <i>No troubles detected, good condition or correct tests, according to vehicle age and mileage</i>			
! <i>Damages or malfunction detected that requires repairs by the buyer</i>			
NA <i>Not applicable</i>			
☐ <i>Not tested</i>			

## Disclaimer

Please also note the "UserGuide condition report", which shows the scope of the vehicle description.

[User Guide](#)