



FORD Fiesta

Fiesta 1.25

VIN NO WF0GXXGAJG9E39352

Registration Number AJG9E39352



MOT Date



Last Service



Number of Owners



Last Service Mileage



Number of Keys



First Registration Date



2010-01-20

Odometer Reading



98024 km

Country First Registered



Inspection Report Summary

Customer

BCA Online

Report Number

P20251002163042

Inspection Date / Place

2025-10-02 / BCA Berlin

Cosmetic Grade

3

Vehicle Summary

Vehicle Condition

Runner

VAT Type

Margin

Fuel Type

Petrol

Road Worthy

Unknown

Colour

Red

Engine Size (cc)

1242

Engine Size

1.2

No of Doors

3

Body Type

Sedan

Drive Train

Front

Seat Colour

No of Seats

5

Seat Covering Name

Seat Covering

Cloth

Charging Cables

NEDC CO2 Rating (q/km)

129

Gearbox Type

Manual

Vehicle History & Documents

Service Book Available

Incomplete

Next Service Mileage

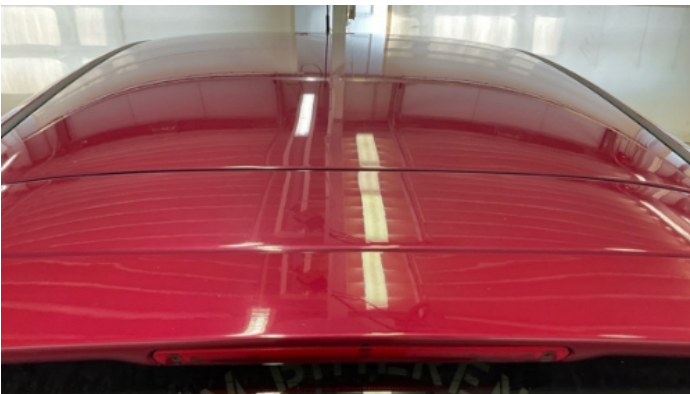
km

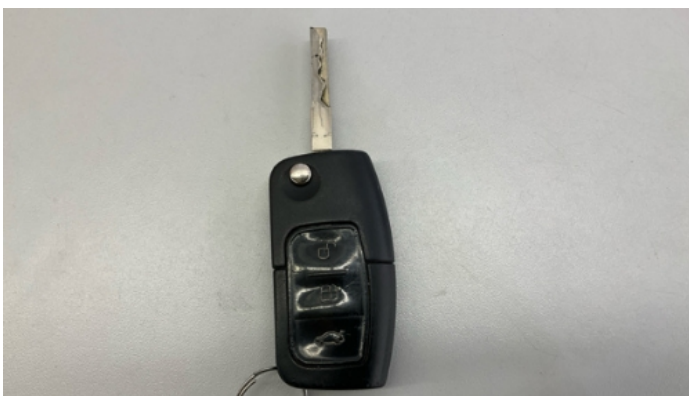
Previous Usage

Imported

No

Manufacturer Warrenty





Equipment

Tinted Glass	Airbag Status	Front parking sensors	Remote central locking
Rear parking sensors	Trip Computer	Anti-lock braking	Remote adjusting wing mirrors
Stability control			

Equipment Details

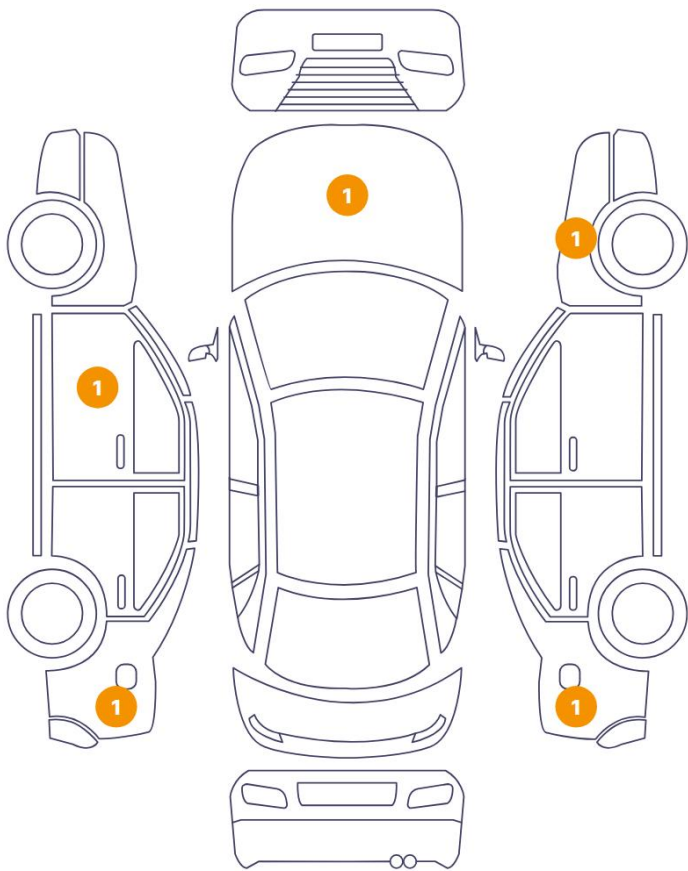
Air Conditioning	Climate Control	Seat Heating	Front
------------------	-----------------	--------------	-------

Wheels & Tyres

Right Front Tyre Depth	6	Left Front Tyre Depth	6
Right Rear Tyre Depth	7	Left Rear Tyre Depth	7

Cosmetic Damage

5 Schäden



0 Schäden



Component	Damage	Comments
1 Side Panel / Back Right	Paint / Poor Previous Repair	
2 Door / Front Left	Paint / Chipping	
3 Side Panel / Back Left	Paint / Scratch / Scuff	
4 Fender / Front Right	Paint / Scratch / Scuff	
5 Hood	Paint / Scratch / Scuff	



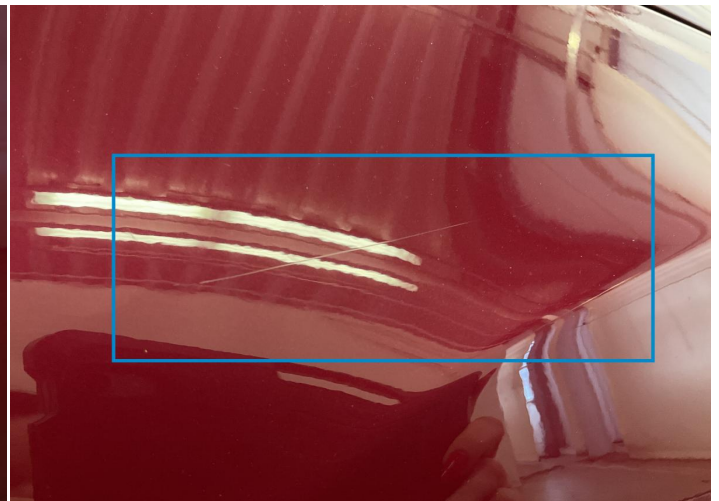
1. Side Panel / Back Right
Paint / Poor Previous Repair -



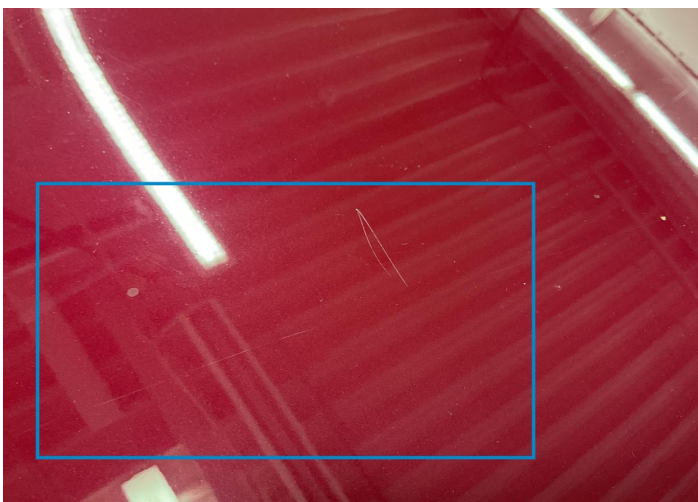
2. Door / Front Left
Paint / Chipping -



3. Side Panel / Back Left
Paint / Scratch / Scuff -



4. Fender / Front Right
Paint / Scratch / Scuff -



5. Hood
Paint / Scratch / Scuff -

Mechanical Condition

Control Lights

ABS Warning Light	✓	ESP Fault/Traction Control Malfunction Light	✓
Airbag Warning Light	✓	Oil Pressure Warning Light	✓
Brake Warning Light	✓	Power Steering Warning Light	✓
No Dashboard Lights	✓	Display Defect	✓
Service Light	✓	Tire Pressure Monitoring System	✓

Engine

Engine Status / EML	✓	Engine Leak Visible	✓
Engine Starts	✓		

Gearbox

Gear Box	✓
----------	---

Equipments Test

Electric Windows	✓	Audio Equipment	✓
AC / Heating System	✓	Other Equipments	✓
Main & Spare Keys Functioning	✓	Parking Sensors / Cameras Functioning	✓

Levels

Brakes Fluid	✓	Coolant Fluid	✓
--------------	---	---------------	---

Test Drive Inspection

Steering Wheel

Steering | Noise / Anomaly

Engine

Engine Noise The Gears Scratch / Skip / Abnormal Operation

Fume Quantity Power Loss

Brake

Brake System Anomaly

Clutch

Clutch Functioning

General

Test Driven Status

- No troubles detected, good condition or correct tests, according to vehicle age and mileage
- Damages or malfunction detected that requires repairs by the buyer
- Not applicable
- Not tested

Disclaimer

Please also note the "UserGuide condition report", which shows the scope of the vehicle description. [User Guide](#)