



Expertise

Protocol number: 41483111
Order No. / Reference: 25090467
Inspection date: 11 Sept 2025

Manufacturer: Ford

Model: Kuga 2.5 Duratec PHEV ST-LINE X

VIN: WF0FXXWPMHMA42477



Vehicle details	
Manufacturer / Type / Model / Equipment	
Ford Kuga 2.5 Duratec PHEV ST-LINE X	
Vehicle Identification number	WF0FXXWPMHMA42477
Mileage (Read)	64,477 km
First registration	17 Aug 2021
Number of holders	1
Next periodical technical inspection	09/2026
(Report on hand)	
Power / Engine displacement	112 kw / 2,488 ccm
Fuel type / Cylinder	Hybr.B/E ext. edition / 4
Gearbox / Number of gears	Automatic / 8
Type of drive	Front drive
Type of vehicle	SUV
Colour / colour code	Chroma-Blau Metallic
Doors / Seats	5 / 5
Upholstery type	Alcantara / Leather
Colour of upholstery	Black
Vehicle with smoke odor	no



Vehicle details

Maintenance booklet / proof	digital proof / complete	Next maintenance in	87 %
Last maintenance on / at	06/2025 at 61,455 km		
Key is / should be	2 / 2	FZG documents	ZB#2 (B) was available (copy), ZB#1 (S) was not available
		Letter No.	GD555067
Previous damage / Accident	Detectable	Repainting	None detectable
Inspection conditions	sufficient	Lifting equipment / pit	yes
Test drive	Not performed	Engine function test	Performed
Manufacturer key number/ type code number	8566 / BTM 00013		
Emission standard	EURO6;WLTP;AP;PI/CI; M, N1 I	Fine dust sticker	
Permitted total weight	2,320 kg	Empty weight	

Tyres

Mounted tyres

#	Tyre size	Type of tyre	Manufacturer	Tread depth
1)	225/55 R19 99V	Summer tyres on Light alloy	Pirelli	6mm / 6mm
2)	225/55 R19 99V	Summer tyres on Light alloy	Pirelli	5mm / 5mm

Additional tyres

#	Tyre size	Type of tyre	Manufacturer	Tread depth
1)	225/65 R17 106H	Winter tyres on Light alloy	Goodyear	6mm / 6mm
2)	225/65 R17 106H	Winter tyres on Light alloy	Goodyear	7mm / 7mm

Replacement

Typ	Tyre size	Type of tyre	Manufacturer	Tread depth
	Tirefit	Expiration date 07/2025		

Legend: Tread depth information for tires on the left is in the first place, for tires on the right is in the second place on the axle in the direction of travel

Equipment

Standard equipment

- Acoustic Vehicle Warning System (AVAS)
- Anti-lock braking system
- Exterior mirrors electrically adjustable, heated and foldable (painted in body color - with integrated indicators and ambient lighting)
- Brake light, third
- Woven fabric headliner
- Roof rails, black
- Roof spoiler (painted in body color)
- 12.3-inch digital instrument panel
- tachometer
- Driving mode switch more selective (5 driving modes to choose from: Normal, Sport, Eco, Slippery and Unpaved Roads)
- Electric windows front and rear (with quick-down switch including total closing function)
- Ford EcoCoach (shows the efficiency of current driving behavior)
- Ford Power Start & Ford Key Free System (keyless locking/unlocking)
- FordPass Connect (including eCall, live traffic information and Wi-Fi hotspot)
- Luggage compartment lighting
- Transmission: continuously variable transmission (CVT)
- Electric tailgate, sensor-controlled (opening and closing by foot movement)
- Interior mirror, automatically dimming
- ISOFIX mounts including Top-Tether attachment points on the outer seats of the 2nd row
- Air conditioning with automatic temperature control (separately adjustable for driver and passenger side (2-zone automatic climate control))
- Headrests front and rear (5) height adjustable
- Paint finish: Uni
- Charging cable (for household sockets and public charging stations)
- Steering column, adjustable in height and reach
- Rear center armrest with cup holder
- Front center console with integrated armrest (2 cup holders in front)
- Emergency brake light, pulsating illumination of the brake lights during heavy braking
- Parking pilot system front and rear
- Pedals with aluminum support
- Upholstery: Premium Sensico upholstery in suede look, with red decorative stitching (with seat center panels in suede look and Sensico seat bolsters in leather look)
- Post-Collision Assist
- Radio accessories: B&O Sound System (575-watt premium sound system with 10 speakers, including subwoofer - Based on the renowned sound and design expertise of Bang & Olufsen)
- Rear view camera
- Ambient lighting (front including front door storage, footwell and cup holder lighting with LED technology)
- Passenger airbag deactivation
- Tires: Tire repair kit (max. 80 km/h permitted when used)
- Body styling kit (upper grille in honeycomb look with black surround - ST-Line front bumper with front lip and inserts in body color - ST-Line rear bumper with sporty diffuser in body color - side skirts and wheel arch trim painted in body color)
- Twin-pipe exhaust system
- Electronic Stability Program (ESP) (with hill start assist, traction control and safety brake assist)
- Lane Assistant including Lane Keeping Assist
- Chassis: Sports suspension
- Electric parking brake with Auto Hold function
- Ford Easy Fuel (Ford Easy Fuel convenience refueling system (Eliminates the need for a separate internal fuel cap and prevents misfueling by recognizing the size difference between petrol and diesel fuel nozzles. This ensures that the filler neck opens only when the correct fuel is used.))
- Luggage compartment cover, roller blind, removable
- Cruise control system
- Glove compartment, illuminated
- Heated rear window
- Rear window wiper
- Intelligent Safety System (IPS Intelligent Protection System) (front airbags for driver and front passenger - curtain airbags at the front and rear - side airbags for driver and front passenger - seatbelt pretensioners and force limiters in the front and on the outer seats of the 2nd row - 3-point seatbelts on all seats, height-adjustable at the front - warning system for unfastened driver and front passenger seatbelts)
- LED taillights
- Steering wheel: ST-Line design, flattened at the bottom and with red decorative stitching, in Sensico synthetic leather
- MyKey key system (individually programmable second key)
- Navigation system: Ford navigation system including Ford SYNC 3 (AppLink, Android Auto, Apple CarPlay - 8" touchscreen (20.3 cm screen diagonal) - DAB/DAB+ (Digital Audio Broadcasting) radio reception - 6 speakers - Steering wheel remote control - Bluetooth® hands-free system and audio streaming - 2 USB ports - Voice control for audio and telephone - Text message reading function - European road map)
- Pre-Collision Assist (including Forward Alert (FA) with pedestrian and bicycle detection - active from approx. 5 km/h to 130 km/h, pedestrian and bicycle detection up to approx. 80 km/h.)
- Tire pressure monitoring system (TPMS)
- Windscreen wipers with rain sensor



- Headlight dipped beam with switch-off delay
- Side windows from 2nd row and rear window, dark tinted
- Seats: Passenger seat, 8-way manually adjustable (including adjustable lumbar support)
- Seats: Map pocket on driver and passenger seat backrests
- Seats: Rear seat bench, sliding, with split folding backrest
- Seats: Front seats, individually and variably heated
- Static LED headlights (high beam assist - LED fog lights)
- Side window borders in black
- Immobiliser

Extra equipment

- All-weather floor mats rear
- Swiveling trailer hitch (including ESP trailer stabilization)
- Inductive charging station for mobile devices (The inductive charging station allows you to charge your compatible smartphone while driving without the hassle of connecting it to a cable. The charging station is located in the vehicle's center console and is only activated when it comes into contact with a compatible device. If you place a wallet or other objects on the charging station, it remains inactive.)
- Package: ST-Line styling package (red brake calipers - large roof spoiler - front door sill trims, "ST-Line" design - pedals with aluminum pads)
- Package: Technology (Adaptive LED headlights with glare-free high beam assistant and dynamic cornering lights, automatic headlight range control and LED fog lights - Head-up display)
- Panoramic sliding sunroof, electric including roof console with glasses storage compartment

- Headlight assistant with day/night sensor
- Power steering (electro-mechanical, speed-dependent (EPAS - Electric Power Assisted Steering))
- Seats: Driver's seat electrically adjustable, 10-way including electrically adjustable lumbar support
- Seats: Front sports seats with integrated headrest
- Sun visor on driver and passenger side
- Power socket: 12-volt connection in the luggage compartment
- Central locking with remote control and remote luggage compartment release

- All-weather floor mats front
- Tires: 7.5 J x 19 alloy wheels (4) in 5x2-spoke design, in black, high-sheen (with 225/55 R19 tires)
- Paint finish: Agate Black Metallic
- Package: Driver Assistance Package (Automatic Transmission) (Intelligent Cruise Control, adaptive with traffic sign recognition system, Traffic Jam Assist with Stop&Go function and Lane Keeping, Wrong-Way Driver Warning, Evasive Traffic Assist, Drowsy Warning, Pre-Collision Assist including Collision Warning with Cross-Traffic Detection, Blind Spot Assist with emergency braking and trailer detection, Active Parking Assist with parking and exit functions with semi-automatic vehicle guidance, Front camera with split view, Door edge protection, Intelligent Speed Limiter with speed limit display)
- Package: Winter II (heated windscreen - heated leather steering wheel - heated outer rear seats)

Brief expert findings

Documents submitted	At the time of the inspection, the registration certificate Part 2 (letter) was available, but the registration certificate Part 1 (certificate) was not. (Copy)
VIN comparison	The vehicle identification number (VIN) was read from the vehicle and its conformity with the submitted documents was verified during the inspection by the undersigned.
Inspection	The inspection conditions were sufficient for the assessment of the vehicle. Lifting equipment and a pit were available for examining the vehicle.
Test drive	No test drive/maneuvering was carried out during the inspection of the vehicle.
Engine function test	An engine test run was performed.

Value reducing factors

No.	Component group	Description
1	Equipment	Tirefit filler - Expired - Replace
2	Door - front left side	Door (Ausblenden/polieren) - dent(s) - Smart repair

Wear and tear

No.	Component group	Description
1	Vehicle glazing	Windscreen - Stone chips - No deduction
2	Bonnet	Bonnet - Stone chips - No deduction

The vehicle shows signs of wear commensurate with its age and use.



Previous damages

No.	Previous damage	Extent of damage (Net)
1	Unknown, Provided by user / customer, from 2 May 2022	563,15 €
2	Front, Provided by user / customer, from 11 Dec 2023	909,90 €
3	Side right, Provided by user / customer, from 17 Jun 2022	1.432,85 €
4	Front, Provided by user / customer, from 22 May 2024	5.643,46 €

Order/Scope of order

The order was placed to prepare a sales report for the vehicle described. This includes the following:

- Description of core relevant information about the vehicle
- Documentation of equipment features
(Delivery by third-party service providers)
- Documentation of damage, defects, missing parts
- Documentation of previous damage, unrepaired previous damage, repainting
- a brief visual or functional inspection of the equipment details if possible.
(Functional tests of driver assistance systems are not included in the scope of services!)
- a photo documentation of the vehicle

Basis for the order

This product is based on the Alphabet Fuhrpark GmbH guidelines for vehicle returns and valuations. The expert makes the explicit findings in each individual case objectively within the framework of the specified standards based on his or her own expertise.

The vehicle inspection takes place in a disassembled state.

Damage or defects that can only be detected during disassembly/diagnosis work or through advanced knowledge remain within the scope of the prognosis risk. An extended risk exists for concealed defects caused by fraudulent deception and not identifiable by the expert.

Damage or defects resulting from normal use or wear and tear of the vehicle will be accepted according to the applicable standard.

There was no explicit identification or monetary consideration of the expected features within the product.

Features which in their nature and severity slightly exceed normal use but do not constitute unacceptable damage will be documented and identified under signs of use if necessary.

Damage or defects which, according to the underlying standard, can no longer be attributed to normal use or wear and tear are listed in the product under "Depreciating Factors".

Depending on the product specification, a monetary ID can be provided. If this takes place, the costs can be 100% d or pro rata depending on the vehicle's age and mileage.

Previous damages

According to available information previous damages were repaired at the vehicle. Traces of repairs, which allow conclusions about the area of repair, were not recognizable during the inspection.

Comments

- Winterradsatz ist kein Bestandteil des Auslieferungsumfangs



Figure 1: Diagonal front (left)



Figure 2: Diagonal front (right)



Figure 3: Diagonal rear (left)



Figure 4: Diagonal rear (right)



Figure 5: Interior - front



Figure 6: Interior - rear



Figure 7: Instrument cluster



Figure 8: Instrument panel



Figure 9: Interior 360° view



Figure 10: Cargo area



Figure 11: VIN



Figure 12: Mounted tyres

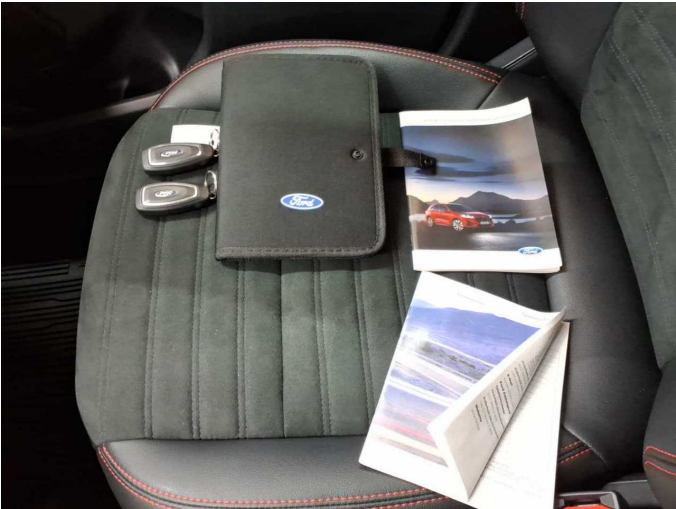


Figure 13: Documents



Figure 14: Documents

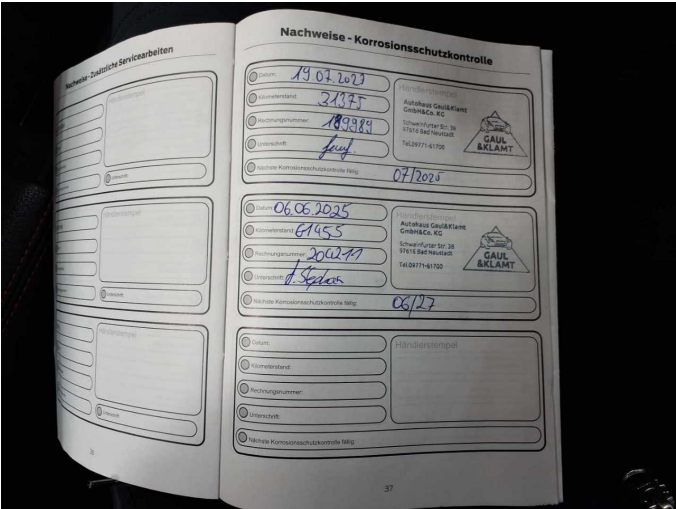


Figure 15: Documents



Figure 16: Documents



Figure 17: Additional tyres



Figure 18: Navigation



Figure 19: Misc.



Figure 20: Misc.



Figure 21: Misc.



Figure 22: Misc.

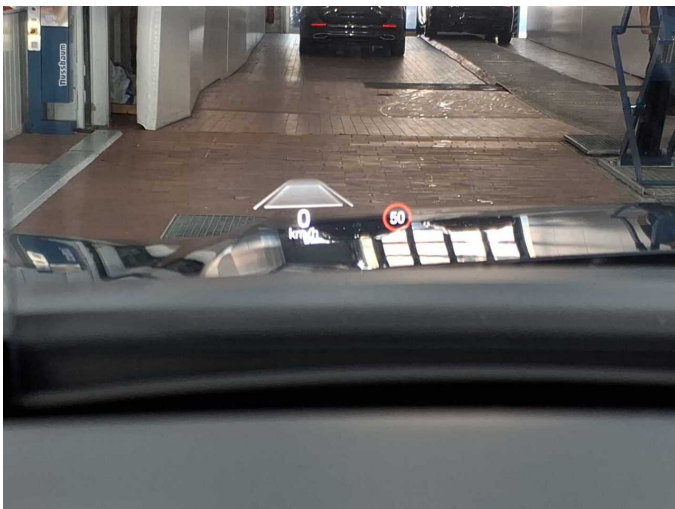


Figure 23: Misc.



Figure 24: Misc.



Figure 25: Misc.



Figure 26: Misc.



Figure 27: Misc.



Figure 28: Misc.



Figure 29: Misc.

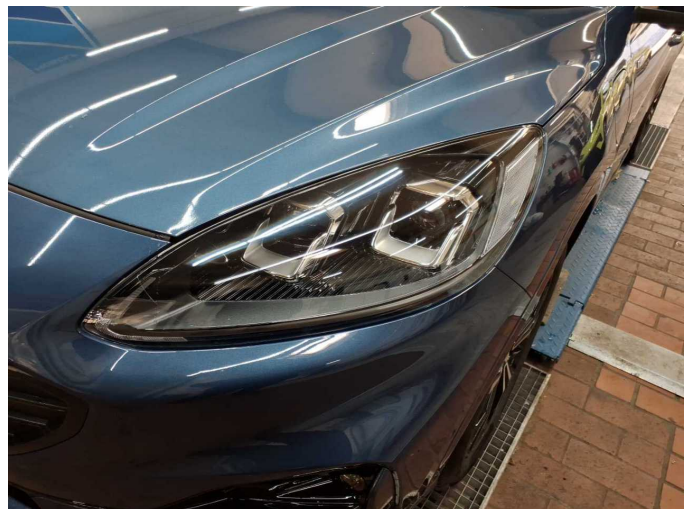


Figure 30: Misc.



Figure 31: Misc.



Figure 32: Misc.



Figure 33: Misc.



Figure 34: Misc.



Figure 35: Misc.

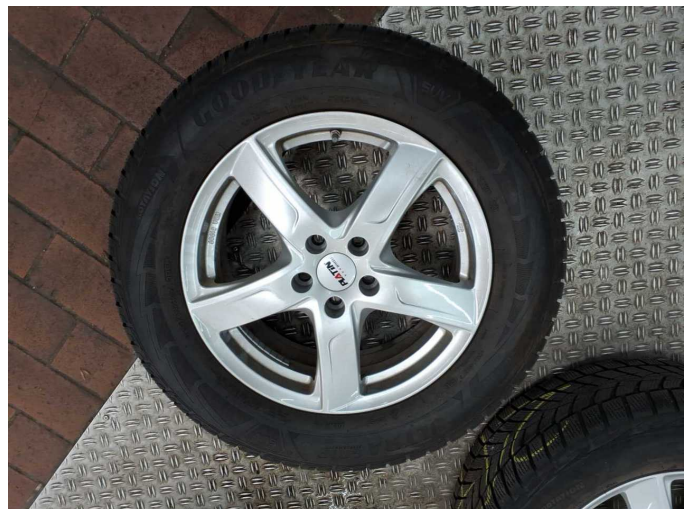


Figure 36: Misc.



Figure 37: Misc.



Figure 38: Misc.



Figure 39: Misc.



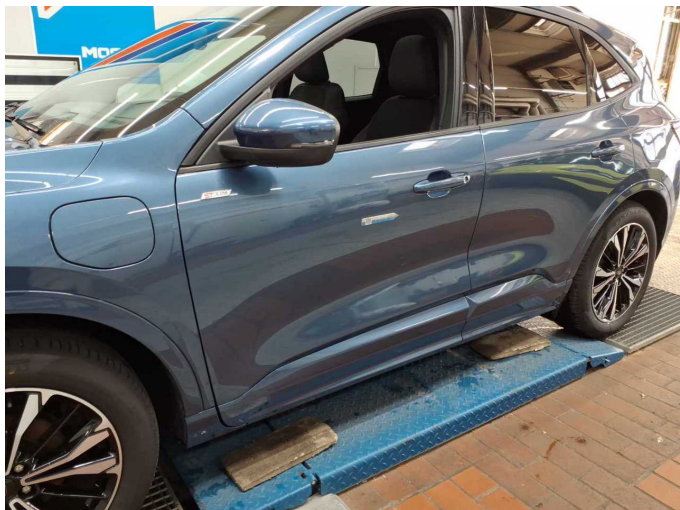
Figure 40: Misc.



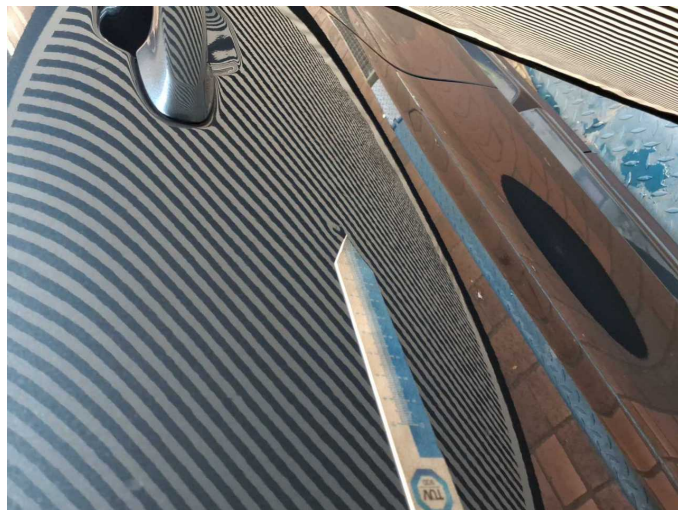
Figure 41: Misc.



Damage 1: Equipment: Tirefit filler - Expired - Replace



Damage 2: Door - front left side: Door (Ausblenden/polieren) - dent(s) - Smart repair



Damage 2: Door - front left side: Door (Ausblenden/polieren) - dent(s) - Smart repair



Wartungshistorie

(gemäß Auftraggeber Informationen)

Fahrgestellnummer: WF0FXXWPMHMA42477
Hersteller / Modell: FORD FORD Kuga 2.5 Duratec PHEV ST-LINE X

Datum	KM-Stand	Beschreibung
06.06.2025	61.455	Bremsflüssigkeit; Bremsflüssigkeit ern; Luftfiltereinsatz ern; Motoröl b. Wartung; Ölfilter ern; Regelwartungsdienst; Systemtest/Eigendiagnose; Zündkerzen ern
26.09.2024	50.759	AU
26.07.2024	49.198	Motoröl b. Wartung; Ölfilter ern; Ölwechsel; Wartung Sonstiges
10.06.2024	46.685	Bremse Sonstiges; Bremsklötze hinten; Bremsscheiben + Klötze h; Bremsscheiben hinten
19.04.2024	46.211	Reparatur Sonstiges; Systemtest/Eigendiagnose; Wartung Sonstiges
19.07.2023	31.379	Bremsflüssigkeit; Bremsflüssigkeit ern; Motoröl b. Wartung; Ölfilter ern; Regelwartungsdienst; Systemtest/Eigendiagnose
06.07.2022	18.738	Motoröl b. Wartung; Ölwechsel