



# FORD Kuga

## Kuga 2.5 Duratec PHEV

VIN NO WF0FXXWPMHLE30518  
Registration Number PMHLE30518



MOT Date	Number of Owners	Number of Keys	Odometer Reading
2026-06-01	1	2	75886 km
Last Service	Last Service Mileage	First Registration Date	Country First Registered
2024-07-18	60437	2021-05-12	Germany

### Inspection Report Summary

Customer	BCA Online	Report Number	P20250926120413
Inspection Date / Place	2025-09-26 / ARS Altmann AG Riedstadt	Cosmetic Grade	3

### Vehicle Summary

Vehicle Condition	Runner	VAT Type	Margin
Fuel Type	Plug - in Hybrid Electric Vehicle Petrol	Road Worthy	Yes
Colour	Grey	Engine Size (cc)	2488
Engine Size	2.5	No of Doors	5
Body Type	SUV	Drive Train	Front
Seat Colour		No of Seats	5
Seat Covering Name		Seat Covering	Synthetic Leather
Charging Cables	OUC + Type 2	WLTP CO2 Emissions	
Gearbox Type	Automatic		

### Vehicle History & Documents

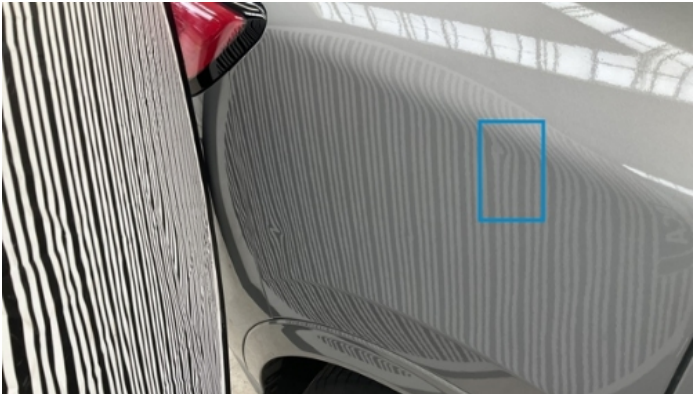
Service Book Available	Computer Print Out Available	Next Service Mileage	km
Previous Usage		Imported	No
Manufacturer Warrenty			











## Equipment

Tinted Glass	USB Socket	Alloys wheels	Bluetooth telephone interface
Digitaldashboard	Head up Display	Remote central locking	Satellite navigation
Electrically folding wing mirrors	Leather steering wheel	Radio	Trip Computer
Airbag Status	Anti-lock braking	Cruise control	Front parking sensors
Remote adjusting wing mirrors	Reversing Camera	Stability control	Electrictailgate
LED Headlamps	Rear parking sensors		

## Equipment Details

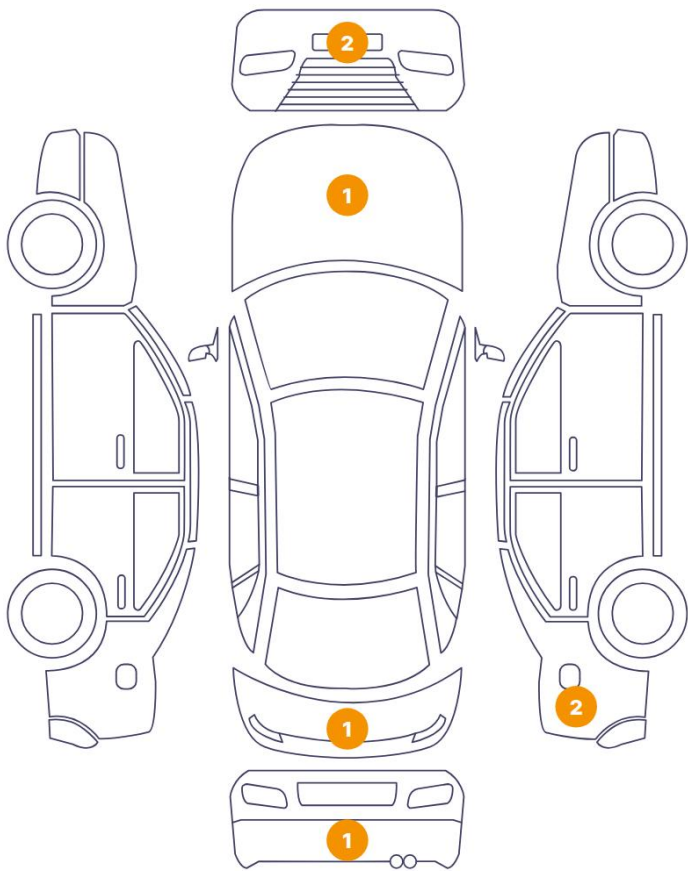
Air Conditioning	Dual Zone Climate Control	Alloy Wheel Size	18
Extra Wheel / Tyre Set	Winter Tyres - Alloy	Seat Heating	Front

## Wheels & Tyres

Extra Wheel - 1 Tyre Depth	5	Extra Wheel - 2 Tyre Depth	5
Extra Wheel - 3 Tyre Depth	5	Extra Wheel - 4 Tyre Depth	5
Right Front Tyre Depth	4	Left Front Tyre Depth	4
Right Rear Tyre Depth	4	Left Rear Tyre Depth	4

Cosmetic Damage

7 Schäden

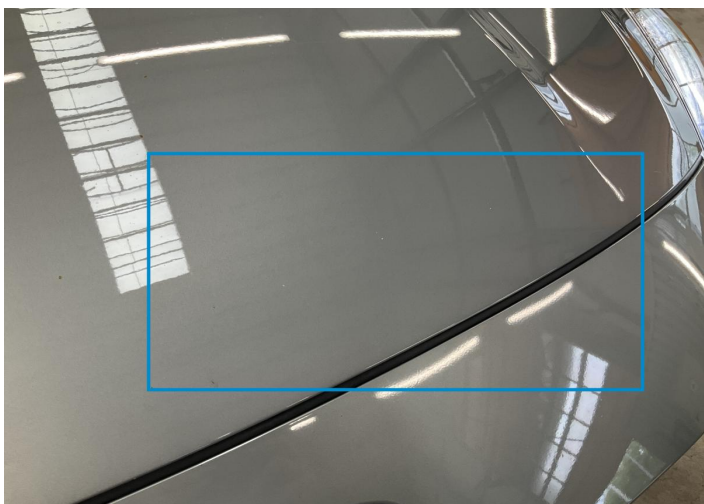


0 Schäden

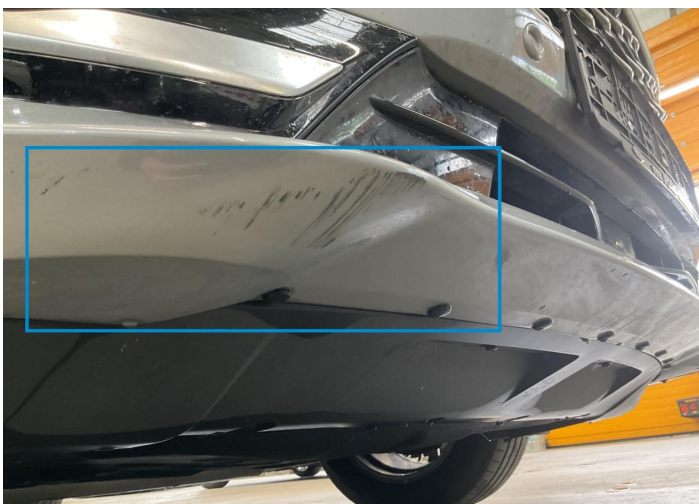


Component		Damage	Comments
1	Hood	Paint / Stone Chip	
2	Bumper / Front	Paint / Scratch / Scuff	
3	Bumper / Front	Paint / Scratch / Scuff	
4	Bumper / Back	Paint / Scratch / Scuff	
5	Rear Window / Back	Glass Break / Scratch / Scratch	
6	Fender / Back Right	Bodywork / Dent / Dent	
7	Fender / Back Right	Bodywork / Dent / Dent	





1. Hood  
Paint / Stone Chip -



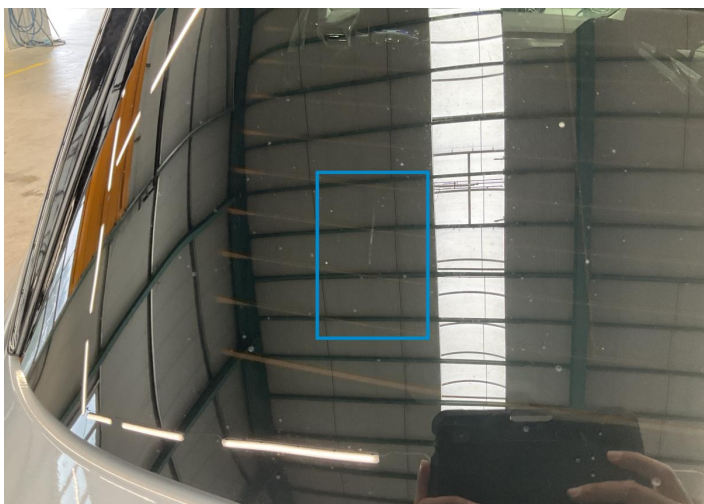
2. Bumper / Front  
Paint / Scratch / Scuff -



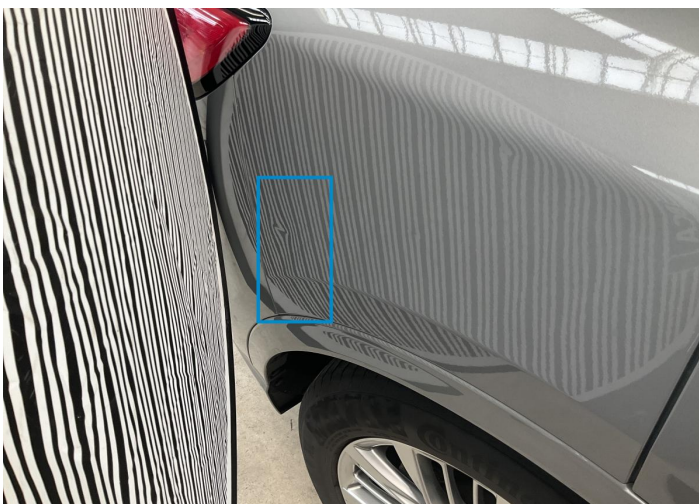
3. Bumper / Front  
Paint / Scratch / Scuff -



4. Bumper / Back  
Paint / Scratch / Scuff -



5. Rear Window / Back  
Glass Break / Scratch / Scratch -



6. Fender / Back Right  
Bodywork / Dent / Dent -



7. Fender / Back Right  
Bodywork / Dent / Dent -



## Mechanical Condition

### Engine

Engine Starts	✓	Engine Status / EML	✓
Engine Leak Visible	✓		

### Equipments Test

Central Locking	✓	Electric Windows	✓
Navigation System	✓	Audio Equipment	✓
AC / Heating System	✓	Other Equipments	✓
Main & Spare Keys Functioning	✓	Parking Sensors / Cameras Functioning	✓

### Control Lights

ABS Warning Light	✓	ESP Fault/Traction Control Malfunction Light	✓
Airbag Warning Light	✓	Oil Pressure Warning Light	✓
Brake Warning Light	✓	Power Steering Warning Light	✓
Alternator / Battery	✓	No Dashboard Lights	✓
Display Defect	✓	Service Light	✓
Tire Pressure Monitoring System	✓		

### Gearbox

Gear Box	✓
----------	---

### Levels

Brakes Fluid	✓	Coolant Fluid	✓
--------------	---	---------------	---

### Hybrid/EV

Hybrid System Fault	✓
---------------------	---

Test Drive Inspection

Steering Wheel			
Steering   Noise / Anomaly		✓	
Engine			
Engine Noise	✓	The Gears Scratch / Skip / Abnormal Operation	✓
Fume Quantity	✓	Power Loss	✓
Brake			
Brake System Anomaly		✓	
General			
Test Driven Status		✓	
✓ <i>No troubles detected, good condition or correct tests, according to vehicle age and mileage</i>			
! <i>Damages or malfunction detected that requires repairs by the buyer</i>			
NA <i>Not applicable</i>			
= <i>Not tested</i>			

Disclaimer

Please also note the "UserGuide condition report", which shows the scope of the vehicle description.

[User Guide](#)