



Expertise

Protocol number: 41602155  
Order No. / Reference: 25180928  
Inspection date: 18 Sept 2025

Manufacturer: Ford

Model: Kuga 2.0 EcoBlue Aut. 4x4 TITANIUM

VIN: WF0FXXWPMFNU67172



Vehicle details	
Manufacturer / Type / Model / Equipment	
Ford Kuga 2.0 EcoBlue Aut. 4x4 TITANIUM	
Vehicle Identification number	WF0FXXWPMFNU67172
Mileage (Read)	39,876 km
First registration	18 Aug 2022
Number of holders	1
Power / Engine displacement	110 kw / 1,995 ccm
Fuel type / Cylinder	Diesel / 4
Gearbox / Number of gears	Automatic / 8
Type of drive	All-wheel drive
Type of vehicle	SUV
Colour / colour code	Chroma-Blau Metallic
Doors / Seats	5 / 5
Upholstery type	Cloth
Colour of upholstery	Anthracite-Black



## Vehicle details

<b>Maintenance booklet / proof</b>	Available / complete	<b>Next maintenance in</b>	48 %
<b>Last maintenance on / at</b>	09/2024 at 26,861 km		
<b>Key is / should be</b>	2 / 2	<b>FZG documents</b>	ZB#2 (B) was available (copy), ZB#1 (S) was not available
		<b>Letter No.</b>	GK845929
<b>Previous damage / Accident</b>	None detectable	<b>Repainting</b>	None detectable
<b>Inspection conditions</b>	sufficient	<b>Lifting equipment / pit</b>	yes
<b>Test drive</b>	Not performed	<b>Engine function test</b>	Performed
<b>Manufacturer key number/ type code number</b>	8566 / BVH 00076		
<b>Emission standard</b>	EURO6;WLTP;AP;PI/CI; M, N1 I	<b>Fine dust sticker</b>	
<b>Permitted total weight</b>	2,245 kg	<b>Empty weight</b>	

## Tyres

### Mounted tyres

#	Tyre size	Type of tyre	Manufacturer	Tread depth
1)	225/65 R17 102V	Summer tyres on Light alloy	Bridgestone	5mm / 5mm
2)	225/65 R17 102V	Summer tyres on Light alloy	Bridgestone	5mm / 5mm

### Additional tyres

#	Tyre size	Type of tyre	Manufacturer	Tread depth
1)	225/65 R17 102H	Winter tyres on Light alloy	Hankook	6mm / 6mm
2)	225/65 R17 102H	Winter tyres on Light alloy	Hankook	7mm / 7mm

### Replacement

Typ	Tyre size	Type of tyre	Manufacturer	Tread depth
	Tirefit	Expiration date 06/2026		

**Legend:** Tread depth information for tires on the left is in the first place, for tires on the right is in the second place on the axle in the direction of travel



## Equipment

### Equipment

- Klimaautomatik

### Standard equipment

- |   |  |
|---|--|
| <ul style="list-style-type: none"> <li>• All-wheel drive</li> <li>• Anti-lock braking system</li> <li>• Passenger airbag deactivation</li> <li>• Tires: Tire repair kit</li> <li>• Chrome decorative surround of the side windows</li> <li>• Roof rails, silver</li> <li>• diesel particulate filter</li> <li>• Twin-pipe exhaust system</li> <li>• Electronic Stability Program (ESP)</li> <li>• Lane Assistant including Lane Keeping Assist</li> <li>• Electric parking brake with Auto Hold function</li> <li>• Ford EcoCoach</li> <li>• FordPass Connect</li> <li>• Luggage compartment lighting</li> <li>• Transmission: 8-speed automatic</li> <li>• Heated rear window</li> <li>• Interior mirror, automatically dimming</li> <li>• ISOFIX mounts including Top-Tether attachment points on the outer seats of the 2nd row</li> <li>• Headrests front and rear (5) height adjustable</li> <li>• Steering wheel: 3-spoke design in Sensico leatherette</li> <li>• Front center console with integrated armrest</li> <li>• Navigation system: Ford navigation system including Ford SYNC 3</li> <li>• Parking pilot system front and rear</li> <li>• Upholstery: Cloth</li> <li>• Pre-Collision Assist</li> <li>• Rear view camera</li> <li>• Projection lens headlights with LED daytime running lights</li> <li>• Headlight assistant with day/night sensor</li> <li>• Seats: Driver and passenger seats, 8-way manually adjustable</li> <li>• Seats: Front sports seats with integrated headrest</li> <li>• Sun visor on driver and passenger side</li> <li>• Power socket: 12-volt connection in the luggage compartment</li> <li>• Central locking with remote control and remote luggage compartment release</li> </ul> | <ul style="list-style-type: none"> <li>• Ambient lighting</li> <li>• Exterior mirrors electrically adjustable, heated and foldable</li> <li>• Tires: 7 J x 17 light alloy wheels (4) in 5x2-spoke design</li> <li>• Brake light, third</li> <li>• Woven fabric headliner</li> <li>• Roof spoiler</li> <li>• 12.3-inch digital instrument panel</li> <li>• tachometer</li> <li>• Driving mode switch more selective</li> <li>• Electric windows front and rear</li> <li>• Ford Easy Fuel</li> <li>• Ford Power Start Function &amp; Ford Key Free System</li> <li>• Luggage compartment cover, roller blind, removable</li> <li>• Cruise control system</li> <li>• Glove compartment, illuminated</li> <li>• Rear window wiper</li> <li>• Intelligent Security System (IPS Intelligent Protection System)</li> <li>• Air conditioning with automatic temperature control</li> <li>• LED taillights</li> <li>• Steering column, adjustable in height and reach</li> <li>• MyKey key system</li> <li>• Fog light</li> <li>• Emergency brake light, pulsating illumination of the brake lights during heavy braking</li> <li>• Post-Collision Assist</li> <li>• Tire pressure monitoring system (TPMS)</li> <li>• Windscreen wipers with rain sensor</li> <li>• Headlight dipped beam with switch-off delay</li> <li>• Power steering</li> <li>• Seats: Map pocket on driver and passenger seat backrests</li> <li>• Seats: Rear seat bench, sliding, with split folding backrest</li> <li>• Seats: Front seats, individually and variably heated</li> <li>• Start-stop system</li> <li>• Carpet floor mats front and rear, velour</li> <li>• Immobiliser</li> </ul> |
|---|--|

### Extra equipment



- Paintwork: Special metallic paintwork
  - Package: Winter II (heated windscreen - heated leather steering wheel - heated outer rear seats)
  - Side windows from 2nd row and rear window, dark tinted
- Package: Driver Assistance Package (Automatic Transmission) (Intelligent Cruise Control, adaptive with traffic sign recognition system, Traffic Jam Assist with Stop&Go function and Lane Keeping, Wrong-Way Driver Warning, Evasive Traffic Assist, Drowsy Warning, Pre-Collision Assist including Collision Warning with Cross-Traffic Detection, Blind Spot Assist with emergency braking and trailer detection, Active Parking Assist with parking and exit functions with semi-automatic vehicle guidance, Front camera with split view, Door edge protection, Intelligent Speed Limiter with speed limit display)

### Brief expert findings

Documents submitted	At the time of the inspection, the registration certificate Part 2 (letter) was available, but the registration certificate Part 1 (certificate) was not. (Copy)
VIN comparison	The vehicle identification number (VIN) was read from the vehicle and its conformity with the submitted documents was verified during the inspection by the undersigned.
Inspection	The inspection conditions were sufficient for the assessment of the vehicle. Lifting equipment and a pit were available for examining the vehicle.
Test drive	No test drive/maneuvering was carried out during the inspection of the vehicle.
Engine function test	An engine test run was performed.

### Value reducing factors

No.	Component group	Description
1	Bonnet	Bonnet - dent(s) - Smooth repair work
2	Wing mirror - right side	Cap - Scratch(es) - Smart repair

### Wear and tear

No.	Component group	Description
1	Body	Body (Waschstraßenkratzer) - Scratch(es) - No deduction

The vehicle shows signs of wear commensurate with its age and use.

### Order/Scope of order

The order was placed to prepare a sales report for the vehicle described. This includes the following:

- Description of core relevant information about the vehicle
- Documentation of equipment features  
(*Delivery by third-party service providers*)
- Documentation of damage, defects, missing parts
- Documentation of previous damage, unrepaired previous damage, repainting
- a brief visual or functional inspection of the equipment details if possible.  
(*Functional tests of driver assistance systems are not included in the scope of services!*)
- a photo documentation of the vehicle



## Basis for the order

This product is based on the Alphabet Fuhrpark GmbH guidelines for vehicle returns and valuations. The expert makes the explicit findings in each individual case objectively within the framework of the specified standards based on his or her own expertise.

The vehicle inspection takes place in a disassembled state.

Damage or defects that can only be detected during disassembly/diagnosis work or through advanced knowledge remain within the scope of the prognosis risk. An extended risk exists for concealed defects caused by fraudulent deception and not identifiable by the expert.

Damage or defects resulting from normal use or wear and tear of the vehicle will be accepted according to the applicable standard.

There was no explicit identification or monetary consideration of the expected features within the product.

Features which in their nature and severity slightly exceed normal use but do not constitute unacceptable damage will be documented and identified under signs of use if necessary.

Damage or defects which, according to the underlying standard, can no longer be attributed to normal use or wear and tear are listed in the product under "Depreciating Factors".

Depending on the product specification, a monetary ID can be provided. If this takes place, the costs can be 100% d or pro rata depending on the vehicle's age and mileage.

## Previous damages

Apparently, no repaired previous damage could be found on the vehicle.

## Comments

- Der 2.Radsatz gehört nicht zur Ausstattung und wurde nicht in der Bewertung berücksichtigt.





Figure 1: Diagonal front (left)



Figure 2: Diagonal front (right)



Figure 3: Diagonal rear (left)



Figure 4: Diagonal rear (right)



Figure 5: Interior - front



Figure 6: Interior - rear





Figure 7: Instrument cluster



Figure 8: Instrument panel



Figure 9: Interior 360° view



Figure 10: Cargo area



Figure 11: VIN



Figure 12: Mounted tyres



Figure 13: Documents



Figure 14: Documents

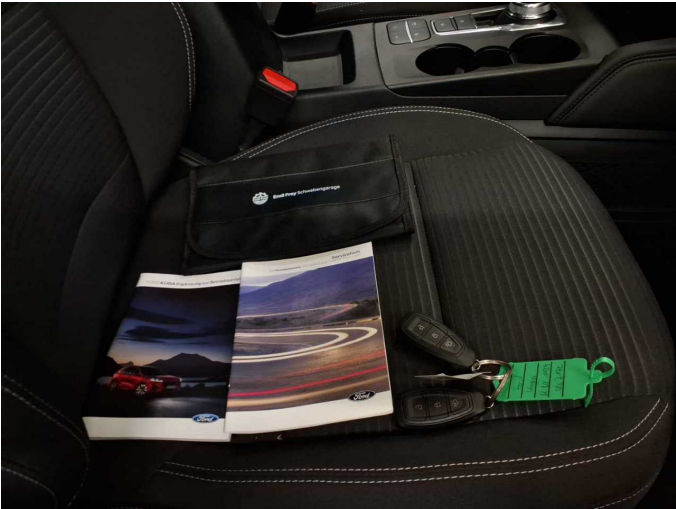


Figure 15: Documents

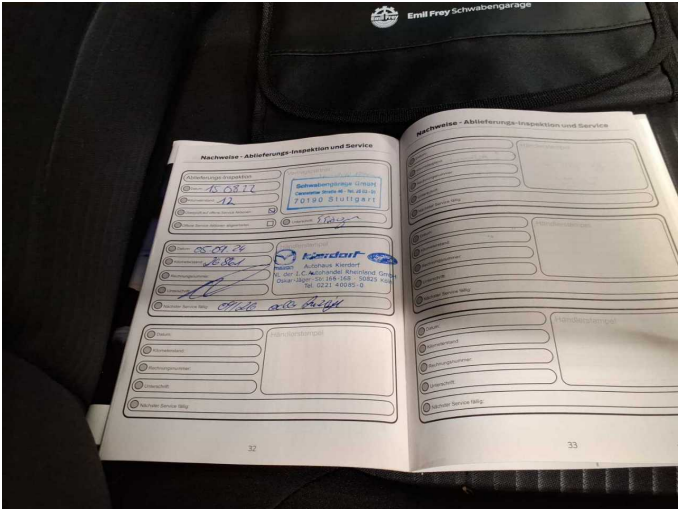


Figure 16: Documents

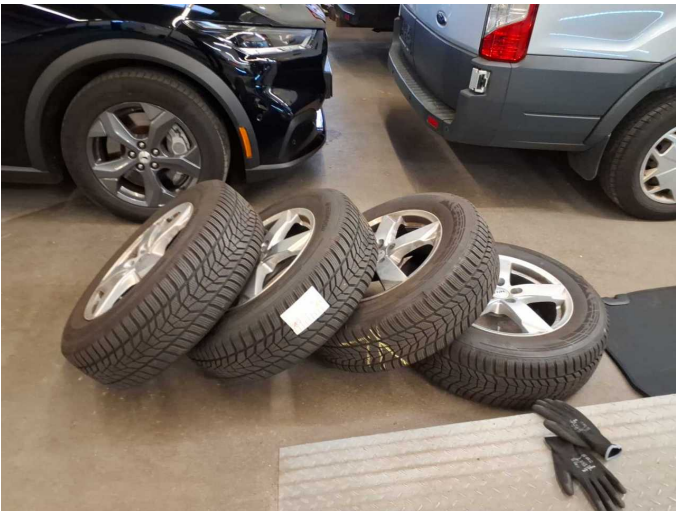


Figure 17: Additional tyres



Figure 18: Additional tyres





Figure 19: Navigation



Figure 20: Misc.



Figure 21: Misc.



Figure 22: Misc.



Figure 23: Misc.



Figure 24: Misc.



Figure 25: Misc.



Figure 26: Misc.



Figure 27: Misc.



Figure 28: Misc.



Figure 29: Misc.



Figure 30: Misc.





Figure 31: Misc.



Figure 32: Misc.



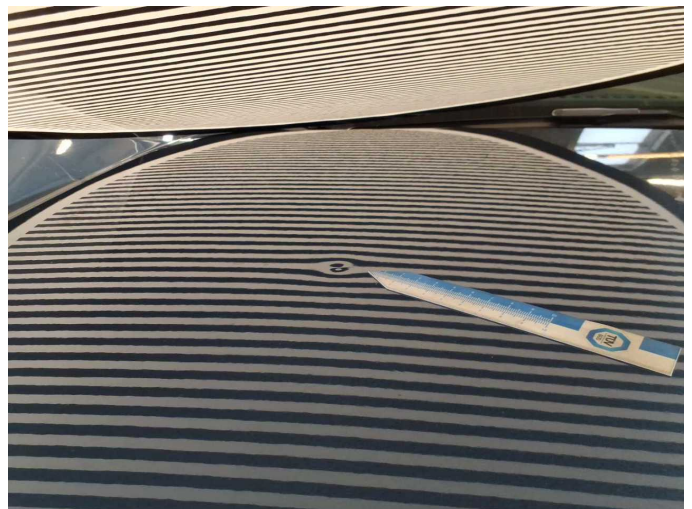
Figure 33: Misc.



Figure 34: Misc.

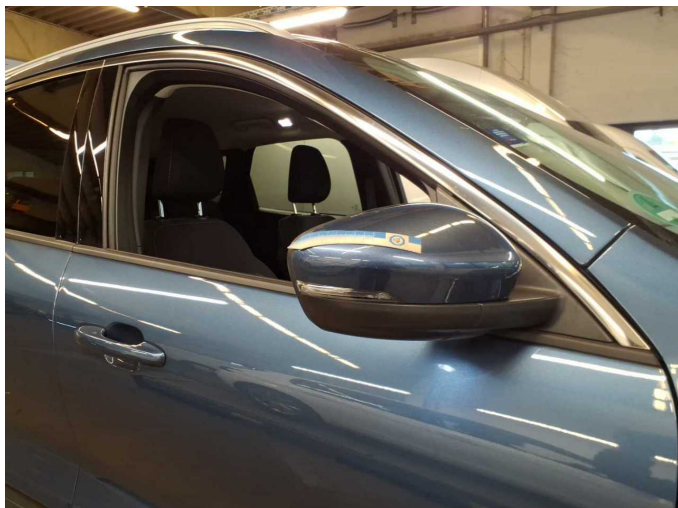


Damage 1: Bonnet: Bonnet - dent(s) - Smooth repair work



Damage 1: Bonnet: Bonnet - dent(s) - Smooth repair work





**Damage 2:** Wing mirror - right side: Cap - Scratch(es) - Smart repair



**Damage 2:** Wing mirror - right side: Cap - Scratch(es) - Smart repair



# Wartungshistorie

(gemäß Auftraggeber Informationen)

Fahrgestellnummer: WF0FXXWPMFNU67172

Hersteller / Modell: FORD FORD Kuga 2.0 EcoBlue Aut. 4x4 TITANIUM

Datum	KM-Stand	Beschreibung
10.09.2024	26.861	Bremsflüssigkeit; Bremsflüssigkeit ern; Motoröl b. Wartung; Ölfilter ern; Regelwartungsdienst; Systemtest/Eigendiagnose; Wartung Sonstiges