



Expertise

Protocol number: 41219566
Order No. / Reference: 24982850
Inspection date: 26 Aug 2025

Manufacturer: Ford	Model: Mondeo Turnier 2.0 EcoBlue Aut. Titanium
VIN: WF0FXXWPCFMR34475	



Vehicle details	
Manufacturer / Type / Model / Equipment	
Ford Mondeo Turnier 2.0 EcoBlue Aut. Titanium	
Vehicle Identification number	WF0FXXWPCFMR34475
Mileage (Read)	93,850 km
First registration	15 Jul 2021
Number of holders	1
Next periodical technical inspection	07/2026
(Report on hand)	
Power / Engine displacement	140 kw / 1,995 ccm
Fuel type / Cylinder	Diesel / 4
Gearbox / Number of gears	Automatic / 8
Type of drive	Front drive
Type of vehicle	Station wagon
Colour / colour code	Frozen White
Doors / Seats	5 / 5
Upholstery type	Cloth
Colour of upholstery	Anthracite-Black
Vehicle with smoke odor	no



Vehicle details

Maintenance booklet / proof	digital proof / complete	Next maintenance in	71 %
Last maintenance on / at	04/2025 at 87,541 km		
Key is / should be	2 / 2	FZG documents	ZB#2 (B) was available (copy), ZB#1 (S) was not available
		Letter No.	GD548763
Previous damage / Accident	Detectable	Repainting	None detectable
Inspection conditions	sufficient	Lifting equipment / pit	yes
Test drive	Not performed	Engine function test	Performed
Manufacturer key number/ type code number	8566 / BRJ 00026		
Emission standard	EURO6;WLTP;AP;PI/CI; M, N1 I	Fine dust sticker	
Permitted total weight	2,330 kg	Empty weight	

Tyres

Mounted tyres

#	Tyre size	Type of tyre	Manufacturer	Tread depth
1)	215/55 R17 98W	Summer tyres on Light alloy	Goodyear	4mm / 4mm
2)	215/55 R17 98W	Summer tyres on Light alloy	Goodyear	4mm / 4mm

Additional tyres

#	Tyre size	Type of tyre	Manufacturer	Tread depth
1)	215/55 R17 98H	Winter tyres on Light alloy	Pirelli	6mm / 6mm
2)	215/55 R17 98H	Winter tyres on Light alloy	Pirelli	4mm / 4mm

Replacement

Typ	Tyre size	Type of tyre	Manufacturer	Tread depth
	Tirefit	Expiration date 06/2025		

Legend: Tread depth information for tires on the left is in the first place, for tires on the right is in the second place on the axle in the direction of travel

Equipment

Standard equipment

- Activated carbon filter
- Anti-lock braking system (ABS) with electronic brake-force distribution (EBD)
- Attachment points for safety partition grilles (attachment points for the 2nd row of seats)
- Tires: 7 J x 17 alloy wheels (4) with 215/55 R 17 tires (10x2-spoke design in Luster Nickel premium paint)
- Hill start assist
- Chrome decor (side window border)
- Roof rails, aluminum look
- Twin-pipe exhaust system
- Front door sill trim
- Electronic Safety and Stability Program (ESP) (with traction control (ASR) and safety brake assist (EBA) - and trailer stabilization function)
- Lane Assistant including Lane Keeping Assist and Fatigue Warning (including High Beam Assist and Road Edge Detection)
- Parking brake, electronic
- Ford Power start function (with Ford Key Free system - keyless locking/unlocking - second passive vehicle key)
- FordPass Connect including eCall, live traffic information, and Wi-Fi hotspot (information about the current status or location of the vehicle, as well as control of selected vehicle functions via smartphone with the FordPass app - eCall emergency call system for sending an emergency call in the event of an accident or manual activation - Current traffic information in real time - Wi-Fi hotspot (up to 4G/LTE7, for up to 10 mobile devices))
- Back window, heater
- Interior lighting with delay circuit (with reading lights, front and rear)
- Isofix mounting (including top tether anchor points on the outer seats of the 2nd row)
- Electric child safety lock
- Air conditioning with automatic temperature control (separately adjustable for driver and passenger side (2-zone automatic climate control))
- Front headrests, 4-way height and tilt adjustable
- Steering wheel: multifunction leather steering wheel
- Reading lights front and rear
- Front center console with padded armrests (under the armrest storage compartment - 2 cup holders)
- Ambient lighting at the front including door storage, front door handle and footwell lighting
- Exterior mirrors in body color, driver and passenger side, electrically adjustable and heated (with integrated indicators and ambient lighting and electrically folding)
- Tires: Tire repair kit
- Tires: Tire Pressure Monitoring System (TPMS)
- Brake light, third
- headliner, light
- Diesel particulate filter (DPF)
- tachometer
- Electronic Shifter
- Driver information system - 25.4 cm color display (digital/analog) (on-board computer with fuel consumption and mileage information)
- Electric front and rear windows (with anti-pinch protection and automatic opening and closing function)
- High beam assistant
- Ford Easy Fuel (The Ford Easy Fuel convenient refueling system eliminates the need for a separate internal fuel cap and prevents misfueling by recognizing the size difference between petrol and diesel fuel nozzles. This ensures that the filler neck opens only when the correct fuel is used.)
- Heated windscreen
- Luggage compartment cover
- Luggage compartment lighting
- Cruise control system with intelligent speed limiter
- Transmission: 8-speed automatic transmission (with manual shift option)
- Rear window wiper
- Interior mirror automatically dimming
- Intelligent Safety System (IPS Intelligent Protection System: - Front airbag for driver and front passenger - Knee airbag for driver - Curtain airbags, front and rear - Side airbags for driver and front passenger - Seatbelt tensioners and belt force limiters, front - 3-point seatbelts on all seats, height-adjustable in the front)
- Headrests (3) rear, height adjustable
- LED design daytime running lights in the fog lights
- Steering column, adjustable (adjustable in height and reach)
- MyKey key system (individually programmable second key) (setting options include: limiting the maximum speed and radio volume, speed warning, safety assistance systems cannot be deactivated, ESP deactivation lock, extended warning system for unfastened seat belts)
- Fog light
- Emergency brake light (pulsating brake lights during heavy braking)
- Parking pilot system front and rear
- Pre-Collision Assist (with pedestrian and bicycle detection)



- Navigation: Ford Navigation including Ford SYNC 3 with AppLink, 8" touchscreen (20.3 cm screen) with DAB/DAB+ (8 speakers - remote control on the steering wheel - Bluetooth hands-free system and audio streaming - 2 USB ports - voice control for audio and telephone - SMS reading function - road map for Europe - acoustic and visual route guidance, dynamic navigation, lane recommendation, - Live Traffic in conjunction with FordPass - advanced voice control - advanced voice output - Michelin travel guide for Europe)
- Windscreen wipers with rain sensor
- Headlight assistant with day/night sensor
- Side skirts painted in body color
- Seats: Driver and passenger seats, 4-way manually adjustable (with manually adjustable lumbar support)
- Seats: Sports seats with fabric upholstery (with reinforced lateral support)
- 12 volt socket in the luggage compartment
- Front bumper painted in body color
- Carpet floor mats front and rear
- Lashing eyes in the luggage compartment floor
- Immobiliser
- Central locking (including selective locking (one door/all doors), remote control and remote luggage compartment release)
- Rear lights with LED technology (LED brake lights)
- Rear seat backrest, foldable, 60:40 split
- Low beam headlights with switch-off delay including "welcome function" (halogen headlights)
- Power steering electro-mechanical speed-dependent
- Seats: Map pocket on the passenger seat backrest
- Seats: Map pocket on the driver's seat backrest
- Seats: Front seats individually and variably heated
- Start-stop system
- 12 volt socket in the front interior
- Daytime running light
- Traffic sign recognition system
- Warning system for unfastened seat belts in the front and second row
- Cigarette lighter (and ashtray in the center console)

Extra equipment

- Anti-theft alarm system including double locking (with interior monitoring) (additionally with self-sufficient power supply)
- Package: Winter (heated windshield - heated leather steering wheel - 230-volt socket in center console (not in conjunction with hybrid engine) - individually and variably heated front seats - variably heated rear seat)
- Seats: Ford ergonomic seat (driver's seat 18-way adjustable: - length, height, and seat angle - extendable thigh support - adjustable backrest - 4-way electrically adjustable lumbar support - passenger seat, 4-way manually adjustable, including manually adjustable lumbar support)
- 2 kg powder fire extinguisher
- Attachment points for safety partition grilles (attachment points 1st row of seats)
- Package Business 4
- Paint finish: Frost White
- Protective film rear bumper
- Safety partition grille for luggage compartment, 2nd row of seats
- Side windows from 2nd row and rear window, dark tinted
- Trailer hitch, electrically pivoting (ESP trailer stabilization - continuous power supply - switched power supply - hill start assist)
- Vehicle lettering Dräger

Brief expert findings

Documents submitted	At the time of the inspection, the registration certificate Part 2 (letter) was available, but the registration certificate Part 1 (certificate) was not. (Copy)
VIN comparison	The vehicle identification number (VIN) was read from the vehicle and its conformity with the submitted documents was verified during the inspection by the undersigned.
Inspection	The inspection conditions were sufficient for the assessment of the vehicle. Lifting equipment and a pit were available for examining the vehicle.
Test drive	No test drive/maneuvering was carried out during the inspection of the vehicle.
Engine function test	An engine test run was performed.

Value reducing factors



No.	Component group	Description
1	Equipment	Tirefit filler - Expired - Replace
2	Trim / covers	Door trim - rear right side - Damaged - Smart repair
3	Rear bumper	Rear bumper - Scratched - Smart repair
4	Roof	Roof rail - left side - Paint defect - Smart repair
5	Side panel - rear right side	Side panel - Scratched - Smart repair
6	Door - rear left side	Door - Scratch(es) - Smart repair
7	Steering system	Steering wheel - Abrasion - Smart repair
8	Side panel - rear left side	Sill - Paint defect - Smart repair
9	Side panel - rear right side	Sill - Dent / paintcoat damage - Smart repair
10	Side panel - rear right side	Side panel - dent(s) - Smart repair
11	Front bumper	Front bumper - Damaged - Repair and paint
12	Bonnet	Bonnet - Stone chips - Paint

Wear and tear

No.	Component group	Description
1	Vehicle glazing	Windscreen - Stone chips - No deduction

The vehicle shows signs of wear commensurate with its age and use.

Previous damages

No.	Previous damage	Extent of damage (Net)
1	Roof, Front, Side - left, Provided by user / customer, from 5 May 2023	3.571,13 €

Order/Scope of order

The order was placed to prepare a sales report for the vehicle described. This includes the following:

- Description of core relevant information about the vehicle
- Documentation of equipment features
(Delivery by third-party service providers)
- Documentation of damage, defects, missing parts
- Documentation of previous damage, unrepaired previous damage, repainting
- a brief visual or functional inspection of the equipment details if possible.
(Functional tests of driver assistance systems are not included in the scope of services!)
- a photo documentation of the vehicle



Basis for the order

This product is based on the Alphabet Fuhrpark GmbH guidelines for vehicle returns and valuations. The expert makes the explicit findings in each individual case objectively within the framework of the specified standards based on his or her own expertise.

The vehicle inspection takes place in a disassembled state.

Damage or defects that can only be detected during disassembly/diagnosis work or through advanced knowledge remain within the scope of the prognosis risk. An extended risk exists for concealed defects caused by fraudulent deception and not identifiable by the expert.

Damage or defects resulting from normal use or wear and tear of the vehicle will be accepted according to the applicable standard.

There was no explicit identification or monetary consideration of the expected features within the product.

Features which in their nature and severity slightly exceed normal use but do not constitute unacceptable damage will be documented and identified under signs of use if necessary.

Damage or defects which, according to the underlying standard, can no longer be attributed to normal use or wear and tear are listed in the product under "Depreciating Factors".

Depending on the product specification, a monetary ID can be provided. If this takes place, the costs can be 100% d or pro rata depending on the vehicle's age and mileage.

Previous damages

According to available information previous damages were repaired at the vehicle. Traces of repairs, which allow conclusions about the area of repair, were not recognizable during the inspection.



Figure 1: Diagonal front (left)



Figure 2: Diagonal front (right)



Figure 3: Diagonal rear (left)



Figure 4: Diagonal rear (right)



Figure 5: Interior - front



Figure 6: Interior - rear



Figure 7: Instrument cluster



Figure 8: Instrument panel

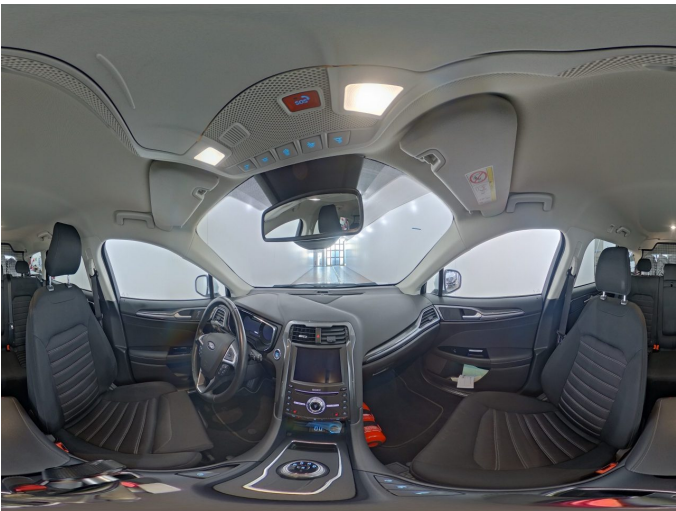


Figure 9: interior 360° view



Figure 10: Cargo area



Figure 11: VIN



Figure 12: Mounted tyres

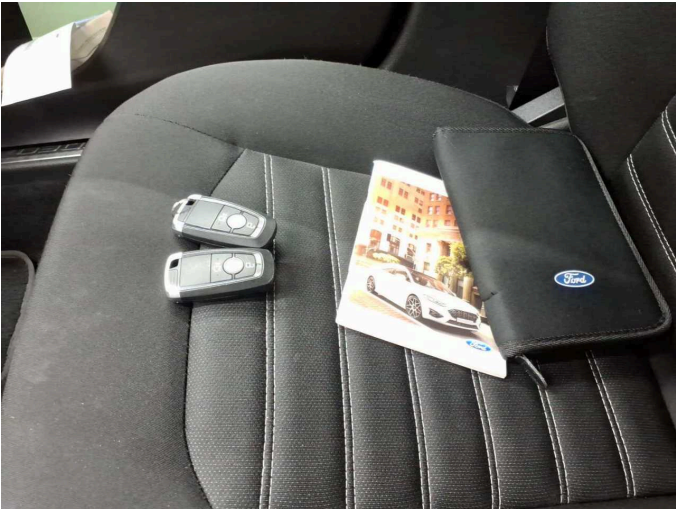


Figure 13: Documents



Figure 14: Documents



Figure 15: Documents



Figure 16: Additional tyres



Figure 17: Navigation



Figure 18: Misc.



Figure 19: Misc.



Figure 20: Misc.



Figure 21: Misc.

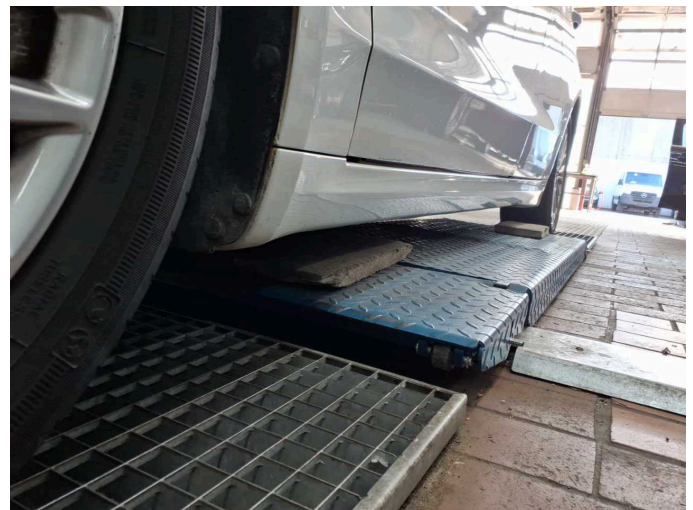


Figure 22: Misc.



Figure 23: Misc.



Figure 24: Misc.



Figure 25: Misc.



Figure 26: Misc.



Figure 27: Misc.



Figure 28: Misc.



Figure 29: Misc.



Figure 30: Misc.



Figure 31: Misc.



Figure 32: Misc.



Figure 33: Misc.



Damage 1: Equipment: Tirefit filler - Expired - Replace



Damage 2: Trim / covers: Door trim - rear right side - Damaged - Smart repair



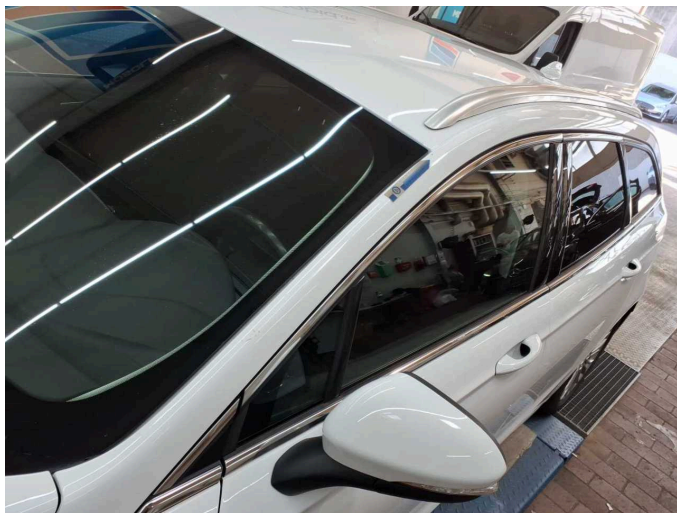
Damage 2: Trim / covers: Door trim - rear right side - Damaged - Smart repair



Damage 3: Rear bumper: Rear bumper - Scratched - Smart repair



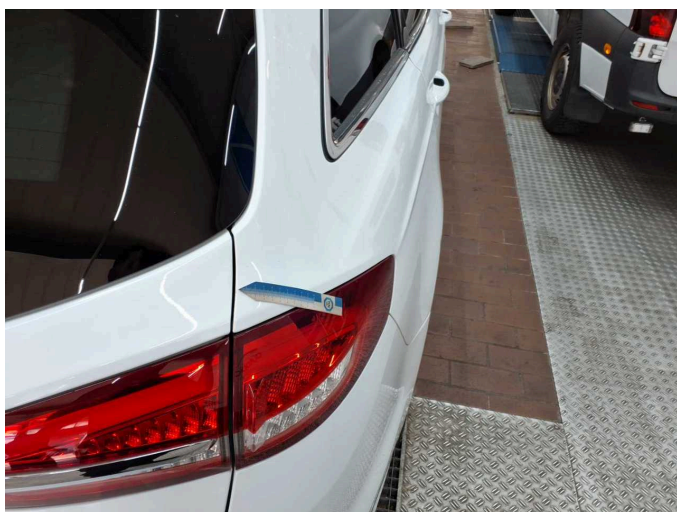
Damage 3: Rear bumper: Rear bumper - Scratched - Smart repair



Damage 4: Roof: Roof rail - left side - Paint defect - Smart repair



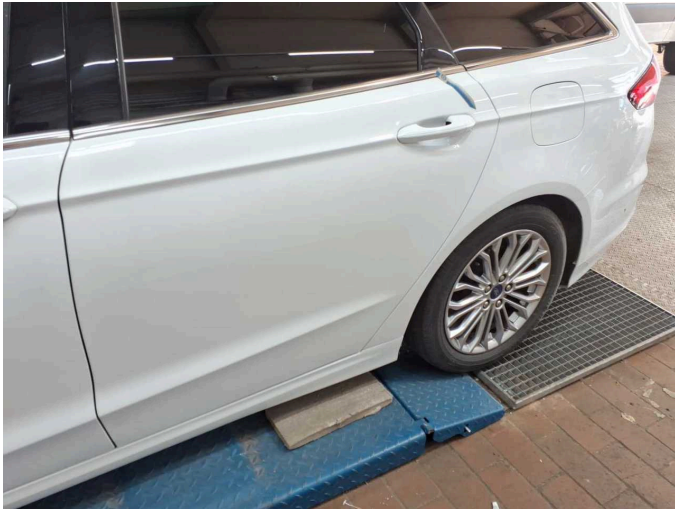
Damage 4: Roof: Roof rail - left side - Paint defect - Smart repair



Damage 5: Side panel - rear right side: Side panel - Scratched - Smart repair



Damage 5: Side panel - rear right side: Side panel - Scratched - Smart repair



Damage 6: Door - rear left side: Door - Scratch(es) - Smart repair



Damage 6: Door - rear left side: Door - Scratch(es) - Smart repair



Damage 7: Steering system: Steering wheel - Abrasion - Smart repair



Damage 7: Steering system: Steering wheel - Abrasion - Smart repair



Damage 7: Steering system: Steering wheel - Abrasion - Smart repair



Damage 8: Side panel - rear left side: Sill - Paint defect - Smart repair



Damage 8: Side panel - rear left side: Sill - Paint defect - Smart repair



Damage 8: Side panel - rear left side: Sill - Paint defect - Smart repair



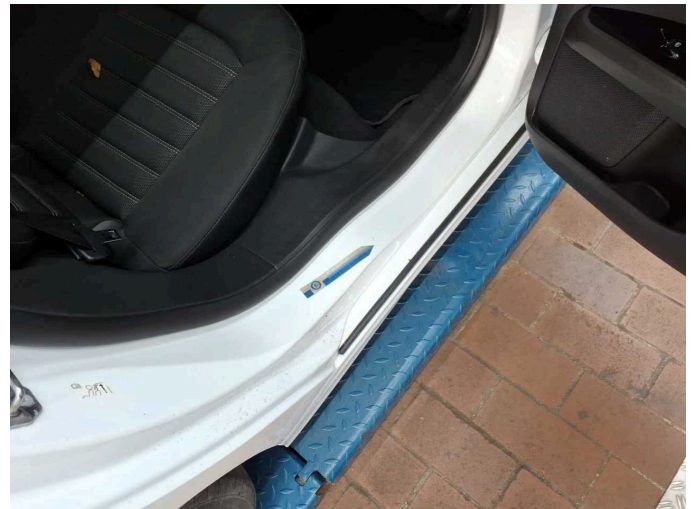
Damage 8: Side panel - rear left side: Sill - Paint defect - Smart repair



Damage 9: Side panel - rear right side: Sill - Dent / paintcoat damage - Smart repair



Damage 9: Side panel - rear right side: Sill - Dent / paintcoat damage - Smart repair



Damage 9: Side panel - rear right side: Sill - Dent / paintcoat damage - Smart repair



Damage 9: Side panel - rear right side: Sill - Dent / paintcoat damage - Smart repair



Damage 9: Side panel - rear right side: Sill - Dent / paintcoat damage - Smart repair



Damage 10: Side panel - rear right side: Side panel - dent(s) - Smart repair



Damage 10: Side panel - rear right side: Side panel - dent(s) - Smart repair



Damage 11: Front bumper: Front bumper - Damaged - Repair and paint



Damage 11: Front bumper: Front bumper - Damaged - Repair and paint



Damage 11: Front bumper: Front bumper - Damaged - Repair and paint



Damage 11: Front bumper: Front bumper - Damaged - Repair and paint



Damage 11: Front bumper: Front bumper - Damaged - Repair and paint



Damage 11: Front bumper: Front bumper - Damaged - Repair and paint



Damage 11: Front bumper: Front bumper - Damaged - Repair and paint



Damage 11: Front bumper: Front bumper - Damaged - Repair and paint



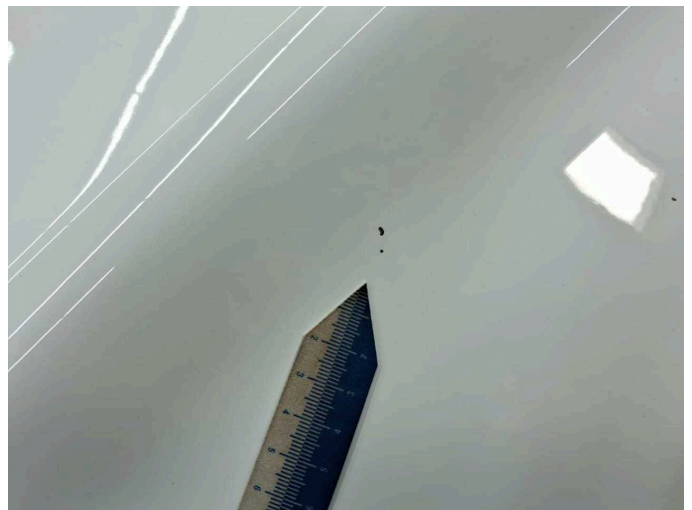
Damage 12: Bonnet: Bonnet - Stone chips - Paint



Damage 12: Bonnet: Bonnet - Stone chips - Paint



Damage 12: Bonnet: Bonnet - Stone chips - Paint



Damage 12: Bonnet: Bonnet - Stone chips - Paint



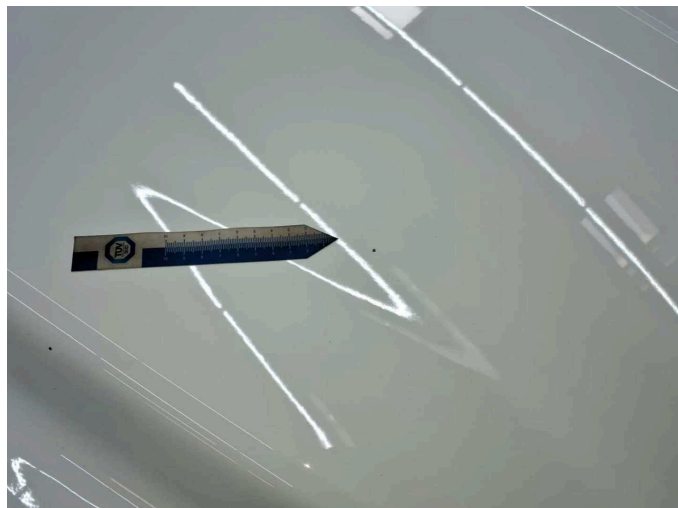
Damage 12: Bonnet: Bonnet - Stone chips - Paint



Damage 12: Bonnet: Bonnet - Stone chips - Paint



Damage 12: Bonnet: Bonnet - Stone chips - Paint



Damage 12: Bonnet: Bonnet - Stone chips - Paint



Wartungshistorie

(gemäß Auftraggeber Informationen)

Fahrgestellnummer: WF0FXXWPCFMR34475

Hersteller / Modell: FORD FORD Mondeo Turnier 2.0 EcoBlue Aut. Titanium

Datum	KM-Stand	Beschreibung
07.04.2025	87.541	Motoröl b. Wartung; Ölfilter ern; Regelwartungsdienst; Wartung Sonstiges
01.10.2024	76.305	Bremsklötze hinten; Bremsklötze vorne; Bremsscheiben + Klötze v; Bremsscheiben vorne
17.07.2024	72.889	Batterie ern; Systemtest/Eigendiagnose
05.09.2023	59.328	Bremsflüssigkeit; Bremsflüssigkeit ern; Kraftstofffilter ern; Luftfiltereinsatz ern; Motoröl b. Wartung; Ölfilter ern; Regelwartungsdienst; Wartung Sonstiges
25.07.2022	29.734	Motoröl b. Wartung; Ölfilter ern; Regelwartungsdienst; Wartung Sonstiges