



Expertise

Protocol number: 41153989
Order No. / Reference: 25053291
Inspection date: 21 Aug 2025

Manufacturer: Ford

Model: Mondeo Turnier 2.0 EcoBlue Titanium

VIN: WF0FXXWPCFMJ38130



Vehicle details	
Manufacturer / Type / Model / Equipment	
Ford Mondeo Turnier 2.0 EcoBlue Titanium	
Vehicle Identification number	WF0FXXWPCFMJ38130
Mileage (Read)	137,695 km
First registration	11 Mar 2021
Number of holders	1
Power / Engine displacement	110 kw / 1,995 ccm
Fuel type / Cylinder	Diesel / 4
Gearbox / Number of gears	Manual / 6
Type of drive	Front drive
Type of vehicle	Station wagon
Colour / colour code	Frost-Weiß
Doors / Seats	5 / 5
Upholstery type	Cloth
Colour of upholstery	Anthracite-Black



Vehicle details

Maintenance booklet / proof	digital proof / complete	Next maintenance in	23,000 km
Last maintenance on / at	06/2025 at 130,630 km		
Key is / should be	2 / 2	FZG documents	ZB#2 (B) was available (copy), ZB#1 (S) was not available
		Letter No.	FZ457515
Previous damage / Accident	None detectable	Repainting	None detectable
Inspection conditions	sufficient	Lifting equipment / pit	yes
Test drive	Not performed	Engine function test	Performed
Manufacturer key number/ type code number	8566 / BJB 00099		
Emission standard	EURO6;WLTP;AP;PI/CI; M, N1 I	Fine dust sticker	
Permitted total weight	2,330 kg	Empty weight	

Tyres

Mounted tyres

#	Tyre size	Type of tyre	Manufacturer	Tread depth
1)	215/55 R17 98W	Summer tyres on Light alloy	Goodyear	5mm / 5mm
2)	215/55 R17 98W	Summer tyres on Light alloy	Continental	6mm / 6mm

Additional tyres

#	Tyre size	Type of tyre	Manufacturer	Tread depth
1)	215/60 R16 99H	Winter tyres on Steel	Continental	5mm / 5mm
2)	215/60 R16 99H	Winter tyres on Steel	Continental	6mm / 6mm

Replacement

Typ	Tyre size	Type of tyre	Manufacturer	Tread depth
E	215/60 R16 95W	Summer tyres on Steel	Continental	7 mm

Legend: Tread depth information for tires on the left is in the first place, for tires on the right is in the second place on the axle in the direction of travel



Equipment

Standard equipment

- Activated carbon filter
- Anti-lock braking system (ABS) with electronic brake-force distribution (EBD)
- Attachment points for safety barriers
- Tires: 7 J x 17 alloy wheels (4) with 215/55 R 17 tires
- Tires: Tire Pressure Monitoring System (TPMS)
- Brake light, third
- headliner, light
- Diesel particulate filter (DPF)
- Front door sill trim
- Driver information system - 25.4 cm color display (digital/analog)
- Electric windows front and rear
- Parking brake, electronic
- Ford Power start function
- Heated windscreen
- Luggage compartment cover
- Cruise control system with intelligent speed limiter
- Back window, heater
- Interior lighting with delay circuit
- Intelligent security system
- Electric child safety lock
- Headrests (3) rear, height adjustable
- LED design daytime running lights in the fog lights
- Steering wheel: multifunction leather steering wheel
- Reading lights front and rear
- MyKey key system (individually programmable second key)
- Fog light
- Emergency brake light
- Pre-Collision Assist
- Rear seat backrest, foldable, 60:40 split
- Low beam headlights with switch-off delay including "welcome function"
- Power steering electro-mechanical speed-dependent
- Seats: Map pocket on the passenger seat backrest
- Seats: Map pocket on the driver's seat backrest
- Seats: Front seats individually and variably heated
- 12 volt socket in the luggage compartment
- Front bumper painted in body color
- Carpet floor mats front and rear
- Lashing eyes in the luggage compartment floor
- Immobiliser
- Central locking
- Ambient lighting at the front including door storage, front door handle and footwell lighting
- Exterior mirrors in body color, driver and passenger side, electrically adjustable and heated
- Tires: Tire repair kit
- Hill start assist
- Chrome decor
- Roof rails, aluminum look
- tachometer
- Electronic Safety and Stability Program (ESP)
- Lane Assistant including Lane Keeping Assist and Fatigue Warning
- High beam assistant
- Ford Easy Fuel
- FordPass Connect including eCall, live traffic information and Wi-Fi hotspot
- Luggage compartment lighting
- Transmission: 6-speed manual transmission
- Rear window wiper
- Interior mirror automatically dimming
- Isofix mount
- Air conditioning with automatic temperature control
- Front headrests, 4-way height and tilt adjustable
- Leather gear knob
- Steering column, adjustable
- Front center console with padded armrests
- Navigation: Ford Navigation including Ford SYNC 3 with AppLink, 8" touchscreen (20.3 cm screen) with DAB/DAB+
- Parking pilot system front and rear
- Taillights with LED technology
- Windscreen wipers with rain sensor
- Headlight assistant with day/night sensor
- Side skirts painted in body color
- Seats: Driver and passenger seats, 4-way manually adjustable
- Seats: Sports seats with fabric upholstery
- Start-stop system
- 12 volt socket in the front interior
- Daytime running light
- Traffic sign recognition system
- Warning system for unfastened seat belts in the front and second row
- Cigarette lighter

Extra equipment



- Package: Business 2 (Sony navigation system including Ford SYNC 3 with AppLink and 8" touchscreen (20.3 cm) with premium sound system and DAB/DAB+, rear view camera, parking assistant with parking and exit function including front and rear parking pilot system, blind spot assistant (Blind Spot Information System including Cross Traffic Alert and dynamic distance detection), electric tailgate, adaptive LED headlights, adaptive LED headlights with steering, including automatic headlight range control, LED daytime running lights, adaptive cruise control)
- Adaptive cruise control with forward collision warning system (including distance display and distance warning and pre-collision assist with speed limiter)
 - Paint finish: Frost White
 - Safety partition net, behind the 2nd row of seats for luggage compartment
 - Side windows from 2nd row and rear window, dark tinted
 - Tires: Spare wheel, steel wheel (with 215/60R16)

Brief expert findings

Documents submitted	At the time of the inspection, the registration certificate Part 2 (letter) was available, but the registration certificate Part 1 (certificate) was not. (Copy)
VIN comparison	The vehicle identification number (VIN) was read from the vehicle and its conformity with the submitted documents was verified during the inspection by the undersigned.
Inspection	The inspection conditions were sufficient for the assessment of the vehicle. Lifting equipment and a pit were available for examining the vehicle.
Test drive	No test drive/maneuvering was carried out during the inspection of the vehicle.
Engine function test	An engine test run was performed.

Value reducing factors

No.	Component group	Description
1	Door - rear right side	Door - dent(s) - Smooth repair work
2	Front bumper	Front bumper - Stone chips - Paint
3	Bonnet	Bonnet - Stone chips - Paint

Order/Scope of order

- The order was placed to prepare a sales report for the vehicle described. This includes the following:
- Description of core relevant information about the vehicle
 - Documentation of equipment features
(Delivery by third-party service providers)
 - Documentation of damage, defects, missing parts
 - Documentation of previous damage, unrepaired previous damage, repainting
 - a brief visual or functional inspection of the equipment details if possible.
(Functional tests of driver assistance systems are not included in the scope of services!)
 - a photo documentation of the vehicle



Basis for the order

This product is based on the Alphabet Fuhrpark GmbH guidelines for vehicle returns and valuations. The expert makes the explicit findings in each individual case objectively within the framework of the specified standards based on his or her own expertise.

The vehicle inspection takes place in a disassembled state.

Damage or defects that can only be detected during disassembly/diagnosis work or through advanced knowledge remain within the scope of the prognosis risk. An extended risk exists for concealed defects caused by fraudulent deception and not identifiable by the expert.

Damage or defects resulting from normal use or wear and tear of the vehicle will be accepted according to the applicable standard.

There was no explicit identification or monetary consideration of the expected features within the product.

Features which in their nature and severity slightly exceed normal use but do not constitute unacceptable damage will be documented and identified under signs of use if necessary.

Damage or defects which, according to the underlying standard, can no longer be attributed to normal use or wear and tear are listed in the product under "Depreciating Factors".

Depending on the product specification, a monetary ID can be provided. If this takes place, the costs can be 100% d or pro rata depending on the vehicle's age and mileage.

Previous damages

Apparently, no repaired previous damage could be found on the vehicle.

Comments

- Winterradsatz ist kein Bestandteil des Auslieferumfangs.



Figure 1: Diagonal front (left)



Figure 2: Diagonal front (right)



Figure 3: Diagonal rear (left)



Figure 4: Diagonal rear (right)



Figure 5: Interior - front



Figure 6: Interior - rear



Figure 7: Instrument cluster



Figure 8: Instrument panel



Figure 9: interior 360° view ([Online link](#))



Figure 10: Cargo area



Figure 11: VIN



Figure 12: Mounted tyres

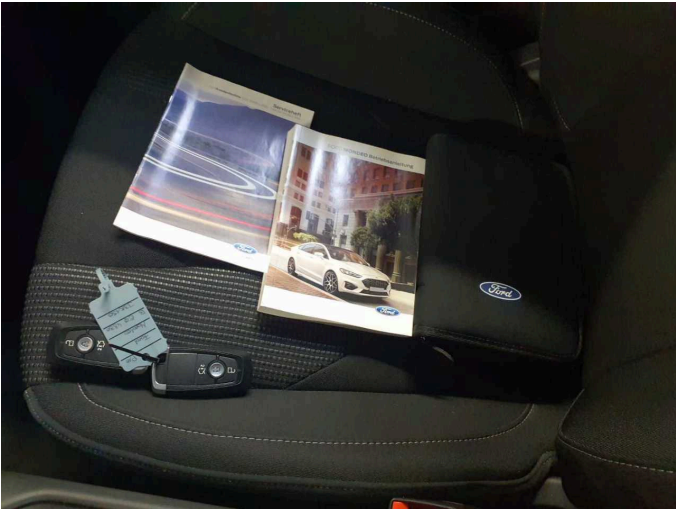


Figure 13: Documents



Figure 14: Additional tyres



Figure 15: Navigation



Figure 16: Misc.



Figure 17: Misc.

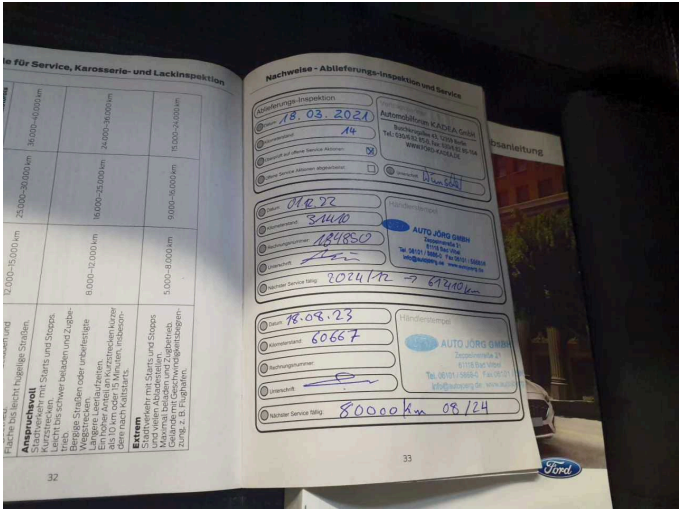


Figure 18: Misc.

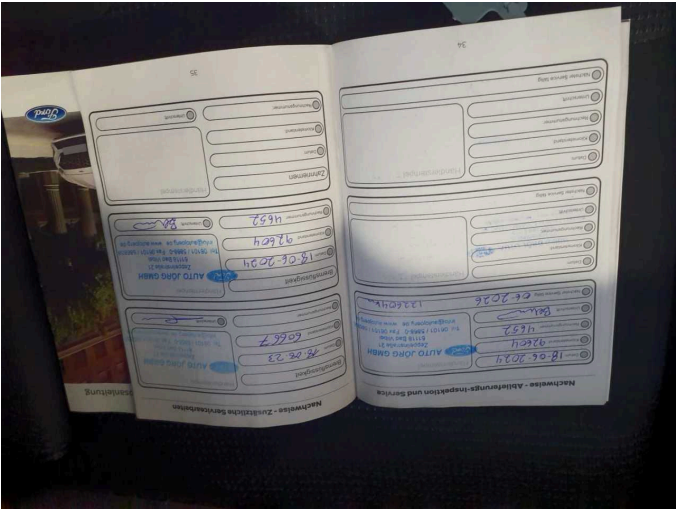


Figure 19: Misc.



Figure 20: Misc.



Figure 21: Misc.



Figure 22: Misc.

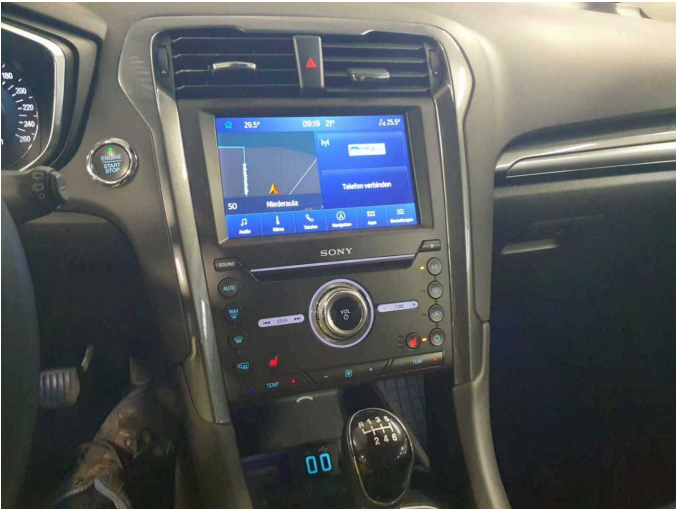


Figure 23: Misc.



Figure 24: Misc.



Figure 25: Misc.

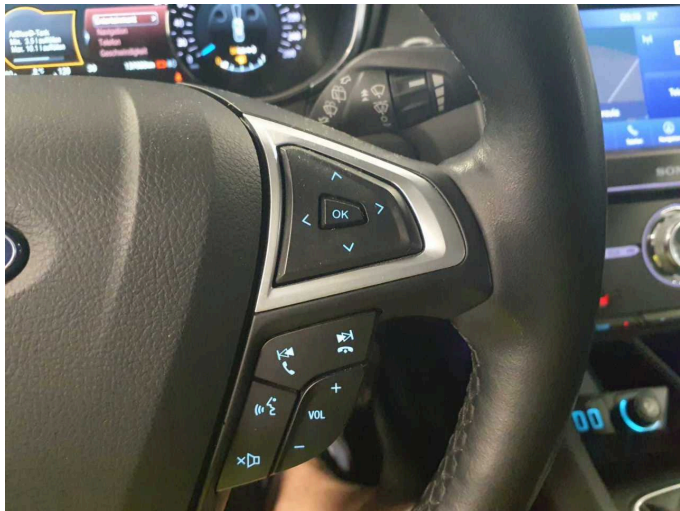


Figure 26: Misc.

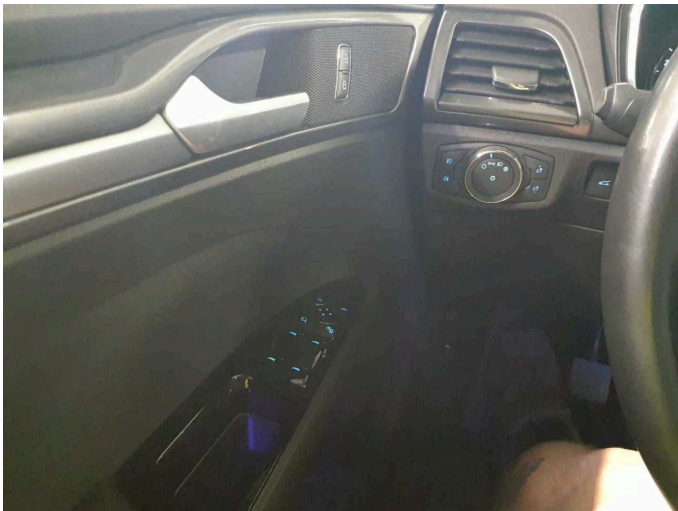


Figure 27: Misc.



Figure 28: Misc.



Figure 29: Misc.



Figure 30: Misc.



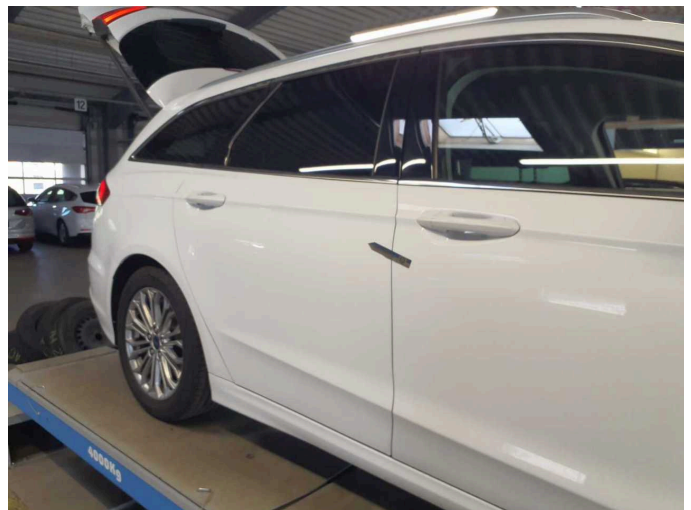
Figure 31: Misc.



Figure 32: Misc.



Figure 33: Misc.



Damage 1: Door - rear right side: Door - dent(s) - Smooth repair work



Damage 1: Door - rear right side: Door - dent(s) - Smooth repair work



Damage 1: Door - rear right side: Door - dent(s) - Smooth repair work



Damage 2: Front bumper: Front bumper - Stone chips - Paint



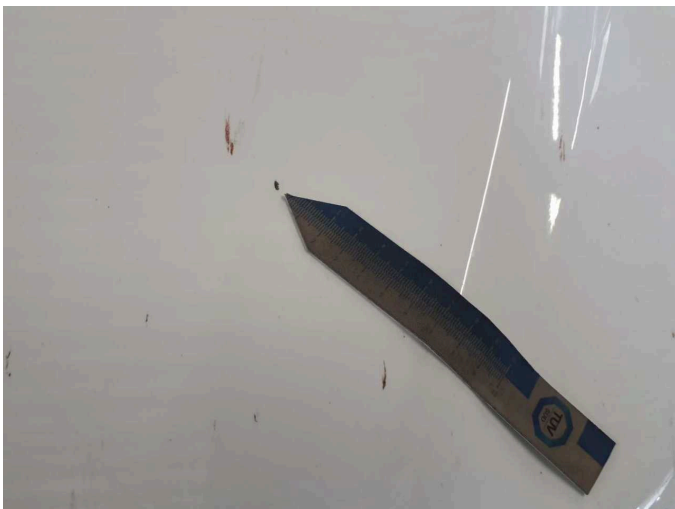
Damage 2: Front bumper: Front bumper - Stone chips - Paint



Damage 2: Front bumper: Front bumper - Stone chips - Paint



Damage 3: Bonnet: Bonnet - Stone chips - Paint



Damage 3: Bonnet: Bonnet - Stone chips - Paint



Damage 3: Bonnet: Bonnet - Stone chips - Paint



Wartungshistorie

(gemäß Auftraggeber Informationen)

Fahrgestellnummer: WF0FXXWPCFMJ38130
Hersteller / Modell: FORD FORD Mondeo Turnier 2.0 EcoBlue Titanium

Datum	KM-Stand	Beschreibung
19.06.2025	130.630	Kraftstofffilter ern; Luftfiltereinsatz ern; Motoröl b. Wartung; Ölfilter ern; Regelwartungsdienst; Wartung Sonstiges
10.03.2025	110.122	Motoröl b. Wartung; Ölfilter ern; Ölwechsel; Regelwartungsdienst; Systemtest/Eigendiagnose; Wartung Sonstiges
20.09.2024	102.790	Bremsklötze vorne; Bremsscheiben + Klötze v; Bremsscheiben vorne
18.06.2024	92.604	Bremsflüssigkeit ern; Motoröl b. Wartung; Ölfilter ern; Regelwartungsdienst; Wartung Sonstiges
26.03.2024	82.541	AU
05.09.2023	60.667	Kraftstofffilter ern; Luftfiltereinsatz ern; Motoröl b. Wartung; Ölfilter ern; Regelwartungsdienst; Wartung Sonstiges
28.12.2022	31.410	Motoröl b. Wartung; Ölfilter ern; Regelwartungsdienst; Wartung Sonstiges