



Expertise

Protocol number: 41611002  
Order No. / Reference: 25199698  
Inspection date: 18 Sept 2025

Manufacturer: Ford	Model: Mondeo Turnier 2.0 EcoBlue Aut. Titanium
VIN: WF0FXXWPCFMJ36842	



Vehicle details	
Manufacturer / Type / Model / Equipment	
Ford Mondeo Turnier 2.0 EcoBlue Aut. Titanium	
Vehicle Identification number	WF0FXXWPCFMJ36842
Mileage (Read)	192,341 km
First registration	5 Mar 2021
Number of holders	1
Power / Engine displacement	110 kw / 1,995 ccm
Fuel type / Cylinder	Diesel / 4
Gearbox / Number of gears	Automatic / 8
Type of drive	Front drive
Type of vehicle	Station wagon
Colour / colour code	Polar Silber-Metallic
Doors / Seats	5 / 5
Upholstery type	Cloth
Colour of upholstery	Anthracite-Black



## Vehicle details

<b>Maintenance booklet / proof</b>	digital proof / complete	<b>Next maintenance in</b>	63 %
<b>Last maintenance on / at</b>	09/2025 at 182,857 km		
<b>Key is / should be</b>	2 / 2	<b>FZG documents</b>	ZB#2 (B) was available (copy), ZB#1 (S) was not available
		<b>Letter No.</b>	FZ459906
<b>Previous damage / Accident</b>	None detectable	<b>Repainting</b>	Detectable
<b>Inspection conditions</b>	sufficient	<b>Lifting equipment / pit</b>	yes
<b>Test drive</b>	Not performed	<b>Engine function test</b>	Performed
<b>Manufacturer key number/ type code number</b>	8566 / BJB 00103		
<b>Emission standard</b>	EURO6;WLTP;AP;PI/CI; M, N1 I	<b>Fine dust sticker</b>	
<b>Permitted total weight</b>	2,330 kg	<b>Empty weight</b>	

## Tyres

### Mounted tyres

#	Tyre size	Type of tyre	Manufacturer	Tread depth
1)	215/55 R17 98W	Summer tyres on Light alloy	Goodyear	3mm / 3mm
2)	215/55 R17 98W	Summer tyres on Light alloy	Goodyear	6mm / 6mm

### Additional tyres

#	Tyre size	Type of tyre	Manufacturer	Tread depth
1)	215/60 R16 99H	Winter tyres on Light alloy	Hankook	6mm / 6mm
2)	215/60 R16 99H	Winter tyres on Light alloy	Hankook	6mm / 6mm

### Replacement

Typ	Tyre size	Type of tyre	Manufacturer	Tread depth
E	215/60 R16 95W	Summer tyres on Steel	Continental	6 mm

**Legend:** Tread depth information for tires on the left is in the first place, for tires on the right is in the second place on the axle in the direction of travel

## Equipment

### Standard equipment

- Activated carbon filter
- Anti-lock braking system (ABS) with electronic brake-force distribution (EBD)
- Attachment points for safety barriers
- Tires: 7 J x 17 alloy wheels (4) with 215/55 R 17 tires
- Tires: Tire Pressure Monitoring System (TPMS)
- Brake light, third
- headliner, light
- Diesel particulate filter (DPF)
- Front door sill trim
- Electronic Safety and Stability Program (ESP)
- Lane Assistant including Lane Keeping Assist and Fatigue Warning
- High beam assistant
- Ford Easy Fuel
- FordPass Connect including eCall, live traffic information and Wi-Fi hotspot
- Luggage compartment lighting
- Transmission: 8-speed automatic transmission
- Rear window wiper
- Interior mirror automatically dimming
- Isofix mount
- Air conditioning with automatic temperature control
- Front headrests, 4-way height and tilt adjustable
- Steering wheel: multifunction leather steering wheel
- Reading lights front and rear
- MyKey key system (individually programmable second key)
- Fog light
- Emergency brake light
- Pre-Collision Assist
- Rear seat backrest, foldable, 60:40 split
- Low beam headlights with switch-off delay including "welcome function"
- Power steering electro-mechanical speed-dependent
- Seats: Map pocket on the passenger seat backrest
- Seats: Map pocket on the driver's seat backrest
- Seats: Front seats individually and variably heated
- 12 volt socket in the luggage compartment
- Front bumper painted in body color
- Carpet floor mats front and rear
- Lashing eyes in the luggage compartment floor
- Immobiliser
- Central locking
- Ambient lighting at the front including door storage, front door handle and footwell lighting
- Exterior mirrors in body color, driver and passenger side, electrically adjustable and heated
- Tires: Tire repair kit
- Hill start assist
- Chrome decor
- Roof rails, aluminum look
- tachometer
- Electronic Shifter
- Driver information system - 25.4 cm color display (digital/analog)
- Electric windows front and rear
- Parking brake, electronic
- Ford Power start function
- Heated windscreen
- Luggage compartment cover
- Cruise control system with intelligent speed limiter
- Back window, heater
- Interior lighting with delay circuit
- Intelligent security system
- Electric child safety lock
- Headrests (3) rear, height adjustable
- LED design daytime running lights in the fog lights
- Steering column, adjustable
- Front center console with padded armrests
- Navigation: Ford Navigation including Ford SYNC 3 with AppLink, 8" touchscreen (20.3 cm screen) with DAB/DAB+
- Parking pilot system front and rear
- Taillights with LED technology
- Windscreen wipers with rain sensor
- Headlight assistant with day/night sensor
- Side skirts painted in body color
- Seats: Driver and passenger seats, 4-way manually adjustable
- Seats: Sports seats with fabric upholstery
- Start-stop system
- 12 volt socket in the front interior
- Daytime running light
- Traffic sign recognition system
- Warning system for unfastened seat belts in the front and second row
- Cigarette lighter

### Extra equipment



- Package: Winter (heated windshield - heated leather steering wheel - 230-volt socket in center console (not in conjunction with hybrid engine) - individually and variably heated front seats - variably heated rear seat)
- Safety partition net, behind the 2nd row of seats for luggage compartment
- Seats: Ford ergonomic seat (driver and front passenger seat 18-way adjustable: - length, height and angle of the seat - extendable thigh support - adjustable backrest - 4-way electrically adjustable lumbar support - fabric upholstery)
- Trailer hitch, electrically pivoting (ESP trailer stabilization - continuous power supply - switched power supply - hill start assist)
- Package: Business 3 (Ford navigation system including Ford SYNC 3 with AppLink, 8" touchscreen (20.3 cm) with DAB/DAB+, 8 speakers, steering wheel remote control, Bluetooth hands-free system and audio streaming, 2 USB ports, voice control for audio and phone, text message read-aloud function, front and rear parking sensors, adaptive LED headlights, adaptive LED headlights with automatic headlight range control, sequential LED indicators at the front, LED daytime running lights, rear view camera)
- Paint finish: metallic
- Side windows from 2nd row and rear window, dark tinted
- Tires: Spare wheel, steel wheel (with 215/60R16)

### Brief expert findings

Documents submitted	At the time of the inspection, the registration certificate Part 2 (letter) was available, but the registration certificate Part 1 (certificate) was not. (Copy)
VIN comparison	The vehicle identification number (VIN) was read from the vehicle and its conformity with the submitted documents was verified during the inspection by the undersigned.
Inspection	The inspection conditions were sufficient for the assessment of the vehicle. Lifting equipment and a pit were available for examining the vehicle.
Test drive	No test drive/maneuvering was carried out during the inspection of the vehicle.
Engine function test	An engine test run was performed.

### Value reducing factors

No.	Component group	Description
1	Misc.	Main inspection - No evidence - No deduction
2	Engine	Toothed belt - No evidence - No deduction
3	Engine	Engine - Leaking - Perform diagnosis
4	Sill - right side	Trim - Broken / torn - Replace
5	Drive train	Sleeve prop shaft - front right side - Broken / torn - Replace

### Missing parts

#### Description

Documents - Service book

### Repainting

#### No. Repainting

- 1 Bonnet, Professionally carried out, Invoice of repair done Non-existent
- 2 Door - rear right side, Professionally carried out, Invoice of repair done Non-existent

### Paint coat thickness measurement

Bonnet	209 µm	Door - rear right side	145 µm
--------	--------	------------------------	--------



## Order/Scope of order

The order was placed to prepare a sales report for the vehicle described. This includes the following:

- Description of core relevant information about the vehicle
- Documentation of equipment features  
*(Delivery by third-party service providers)*
- Documentation of damage, defects, missing parts
- Documentation of previous damage, unrepaired previous damage, repainting
- a brief visual or functional inspection of the equipment details if possible.  
*(Functional tests of driver assistance systems are not included in the scope of services!)*
- a photo documentation of the vehicle

## Basis for the order

This product is based on the Alphabet Fuhrpark GmbH guidelines for vehicle returns and valuations. The expert makes the explicit findings in each individual case objectively within the framework of the specified standards based on his or her own expertise.

The vehicle inspection takes place in a disassembled state.

Damage or defects that can only be detected during disassembly/diagnosis work or through advanced knowledge remain within the scope of the prognosis risk. An extended risk exists for concealed defects caused by fraudulent deception and not identifiable by the expert.

Damage or defects resulting from normal use or wear and tear of the vehicle will be accepted according to the applicable standard.

There was no explicit identification or monetary consideration of the expected features within the product.

Features which in their nature and severity slightly exceed normal use but do not constitute unacceptable damage will be documented and identified under signs of use if necessary.

Damage or defects which, according to the underlying standard, can no longer be attributed to normal use or wear and tear are listed in the product under "Depreciating Factors".

Depending on the product specification, a monetary ID can be provided. If this takes place, the costs can be 100% d or pro rata depending on the vehicle's age and mileage.

## Previous damages

Apparently, no repaired previous damage could be found on the vehicle.





**Figure 1:** Diagonal front (left)



**Figure 2:** Diagonal front (right)



**Figure 3:** Diagonal rear (left)



**Figure 4:** Diagonal rear (right)



**Figure 5:** Interior - front



**Figure 6:** Interior - rear



Figure 7: Instrument cluster



Figure 8: Instrument panel



Figure 9: Interior 360° view ([Online link](#))



Figure 10: Cargo area

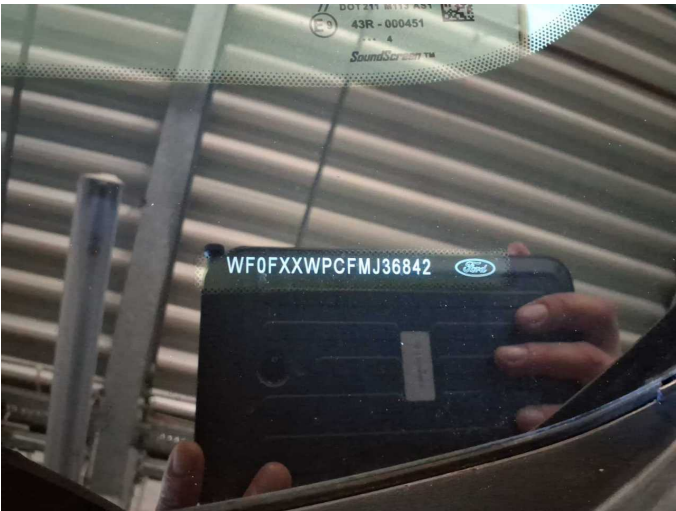


Figure 11: VIN



Figure 12: Mounted tyres





Figure 13: Documents



Figure 14: Additional tyres

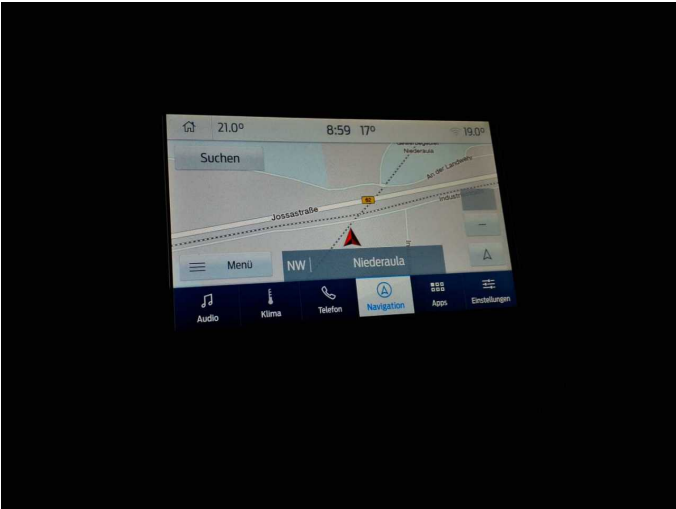


Figure 15: Navigation



Figure 16: Misc.



Figure 17: Misc.



Figure 18: Misc.





Figure 19: Misc.



Figure 20: Misc.



Figure 21: Misc.



Figure 22: Misc.



Figure 23: Misc.



Figure 24: Misc.





Figure 25: Misc.

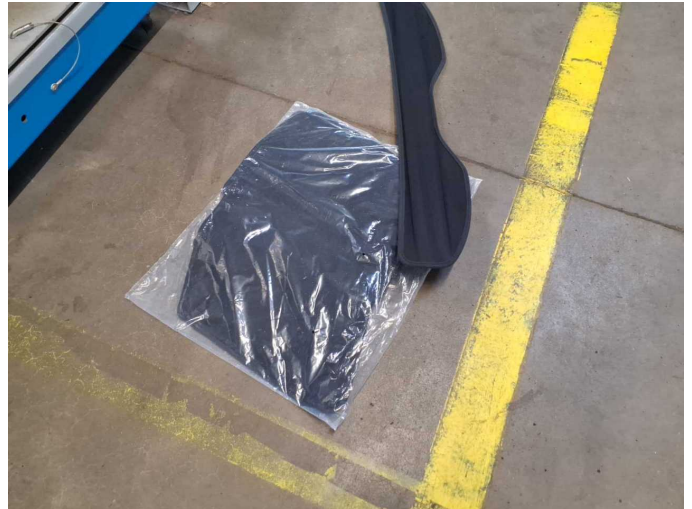


Figure 26: Misc.

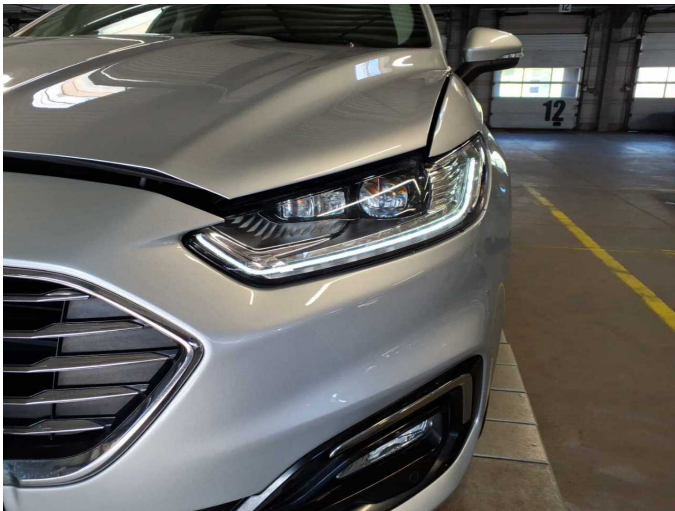


Figure 27: Misc.

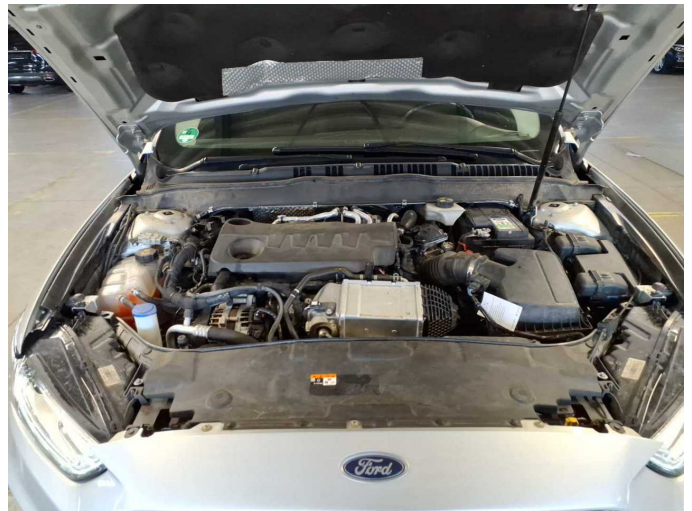


Figure 28: Misc.

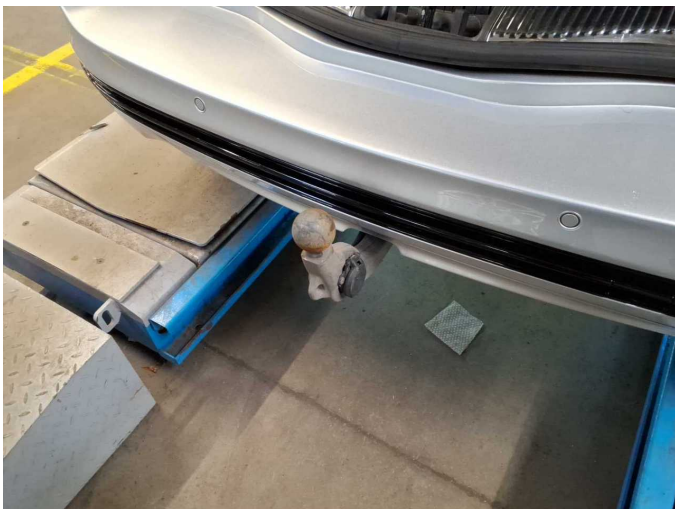


Figure 29: Misc.



Figure 30: Misc.

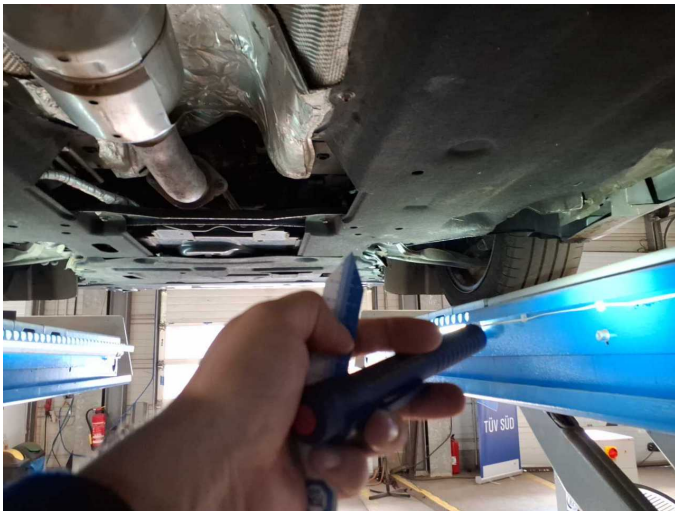




**Figure 31:** Misc.



**Figure 32:** Misc.



**Damage 3:** Engine: Engine - Leaking - Perform diagnosis



**Damage 3:** Engine: Engine - Leaking - Perform diagnosis



**Damage 3:** Engine: Engine - Leaking - Perform diagnosis



**Damage 3:** Engine: Engine - Leaking - Perform diagnosis





**Damage 4:** Sill - right side: Trim - Broken / torn - Replace



**Damage 4:** Sill - right side: Trim - Broken / torn - Replace



**Damage 5:** Drive train: Sleeve prop shaft - front right side - Broken / torn - Replace



**Damage 5:** Drive train: Sleeve prop shaft - front right side - Broken / torn - Replace



**Repainting 1:** Bonnet



**Repainting 2:** Door - rear right side





# Wartungshistorie

(gemäß Auftraggeber Informationen)

Fahrgestellnummer: WF0FXXWPCFMJ36842  
Hersteller / Modell: FORD FORD Mondeo Turnier 2.0 EcoBlue Aut. Titanium

Datum	KM-Stand	Beschreibung
05.09.2025	182.857	Bremsflüssigkeit; Bremsflüssigkeit ern; Kraftstofffilter ern; Luftfiltereinsatz ern; Motoröl b. Wartung; Ölfilter ern; Regelwartungsdienst; Systemtest/ Eigendiagnose; Wartung Sonstiges
22.04.2024	151.016	Motoröl b. Wartung; Ölfilter ern; Regelwartungsdienst; Wartung Sonstiges
26.09.2023	132.756	Reparatur Sonstiges; Reparatur Sonstiges; Systemtest/Eigendiagnose
30.06.2023	121.308	Bremsentest; Bremse Sonstiges; Bremsflüssigkeit; Bremsflüssigkeit ern; Bremsklötze hinten; Bremsklötze vorne; Bremsscheiben + Klötze v; Bremsscheiben vorne; Kraftstofffilter ern; Luftfiltereinsatz ern; Motoröl b. Wartung; Ölfilter ern; Regelwartungsdienst; Wartung Sonstiges
11.01.2023	91.584	Motoröl b. Wartung; Ölfilter ern; Regelwartungsdienst; Wartung Sonstiges
05.07.2022	61.321	Kraftstofffilter ern; Luftfiltereinsatz ern; Motoröl b. Wartung; Ölfilter ern; Regelwartungsdienst; Wartung Sonstiges
03.12.2021	31.001	Kleine Inspektion; Motoröl b. Wartung; Ölfilter ern; Wartung Sonstiges