



Expertise

Protocol number: 41656214
Order No. / Reference: 25227329
Inspection date: 23 Sept 2025

Manufacturer: Ford	Model: Mondeo Turnier 2.0 EcoBlue Aut. Titanium
VIN: WF0FXXWPCFLB67852	



Vehicle details	
Manufacturer / Type / Model / Equipment	
Ford Mondeo Turnier 2.0 EcoBlue Aut. Titanium	
Vehicle Identification number	WF0FXXWPCFLB67852
Mileage (Read)	149,100 km
First registration	19 Feb 2020
Number of holders	1
Next periodical technical inspection	02/2027
(Report not on hand)	
Power / Engine displacement	110 kw / 1,995 ccm
Fuel type / Cylinder	Diesel / 4
Gearbox / Number of gears	Automatic / 8
Type of drive	Front drive
Type of vehicle	Station wagon
Colour / colour code	Polar-Silber Metallic
Doors / Seats	5 / 5
Upholstery type	Cloth
Colour of upholstery	Anthracite
Re/Import	no
Driving readiness	Roadworthy



Vehicle details

Maintenance booklet / proof	digital proof / complete	Next maintenance in	12 %
Last maintenance on / at	07/2024 at 122,627 km		
Key is / should be	2 / 2	FZG documents	ZB#2 (B) was available (copy), ZB#1 (S) was not available
		Letter No.	FS955151
Previous damage / Accident	Detectable	Repainting	None detectable
Inspection conditions	sufficient	Lifting equipment / pit	yes
Test drive	Not performed	Engine function test	Performed
Driving readiness	Roadworthy		
Manufacturer key number/ type code number	8566 / BJB 00095		
Emission standard	EURO6;WLTP;DG;PI/CI; M, N1 I	Fine dust sticker	
Permitted total weight	2,330 kg	Empty weight	

Tyres

Mounted tyres

#	Tyre size	Type of tyre	Manufacturer	Tread depth
1)	215/55 R17 98W	Summer tyres on Light alloy	Hankook	5mm / 5mm
2)	215/55 R17 98W	Summer tyres on Light alloy	Goodyear	4mm / 4mm

Additional tyres

#	Tyre size	Type of tyre	Manufacturer	Tread depth
1)	215/60 R16 99H	Winter tyres on Light alloy	Hankook	5mm / 5mm
2)	215/60 R16 99H	Winter tyres on Light alloy	Hankook	5mm / 5mm

Replacement

Typ	Tyre size	Type of tyre	Manufacturer	Tread depth
	Tirefit	Expiration date 03/2028		

Legend: Tread depth information for tires on the left is in the first place, for tires on the right is in the second place on the axle in the direction of travel



Equipment

Standard equipment

- Active City Stop
- Anti-lock braking system (ABS) with electronic brake-force distribution (EBD)
- Attachment points for safety barriers
- Tires: 7 J x 17 alloy wheels (4) with 215/55 R 17 tires
- Tires: Tire Pressure Monitoring System (TPMS)
- Brake light, third
- headliner, light
- Diesel particulate filter (DPF)
- Front door sill trim
- Driver information system - 25.4 cm color display (digital/analog)
- Electric windows front and rear
- Ford Easy Fuel
- FordPass Connect including eCall, live traffic information and Wi-Fi hotspot
- Cruise control system with intelligent speed limiter
- Back window, heater
- Interior lighting with delay circuit
- Isofix mount
- Air conditioning with automatic temperature control
- 2 front headrests height adjustable
- Radiator grille (lower part) with chrome details
- Steering wheel: multifunction leather steering wheel
- Reading lights front and rear
- Front center console with padded armrests
- MyKey key system (individually programmable second key)
- Fog light
- Emergency brake light
- Package: Winter I
- Parking pilot system front and rear
- Low beam headlights with switch-off delay including "welcome function"
- Seats: Map pocket on the passenger seat backrest
- Seats: Map pocket on the driver's seat backrest
- Start-stop system
- 12 volt socket in the front interior
- Daytime running light
- Traffic sign recognition system
- Warning system for unfastened seat belts in the front and second row
- Ambient lighting at the front including door storage, front door handle and footwell lighting
- Exterior mirrors in body color, driver and passenger side, electrically adjustable and heated
- Tires: Tire repair kit
- Hill start assist
- Chrome decor
- Roof rails, aluminum look
- tachometer
- Electronic Safety and Stability Program (ESP)
- Lane Assistant including Lane Keeping Assist and Fatigue Warning
- Parking brake, electronic
- Ford Power start function
- Luggage compartment cover
- Luggage compartment lighting
- Transmission: 8-speed automatic transmission
- Rear window wiper
- Intelligent security system
- Electric child safety lock
- Headrests (3) rear, height adjustable
- Radiator grille (upper part) with chrome decorative border and chrome struts
- Steering column, adjustable
- Make-up mirrors in driver and passenger sun visors, illuminated
- Navigation: Ford Navigation including Ford SYNC 3 with AppLink, 8" touchscreen (20.3 cm screen)
- Package: View
- Parking Assist (Active Park Assist)
- Rear seat backrest, foldable, 60:40 split
- Side skirts painted in body color
- Seats: Driver and passenger seats, 4-way manually adjustable
- Seats: Sports seats with fabric upholstery
- 12 volt socket in the luggage compartment
- Front and rear bumpers painted in body color
- Carpet floor mats front and rear
- Lashing eyes in the luggage compartment floor
- Immobiliser
- Central locking

Extra equipment

- Luggage net
- Rear leveling, automatic
- Paint finish: metallic



- Package: Technology with Blind Spot Assist (Titanium, ST-Line) (Adaptive LED headlights (Ford Dynamic LED) - LED headlights, adaptive steering, with cornering light - Electric tailgate - Blind Spot Assist with Cross-Traffic Alert and dynamic distance detection)
- Package: Winter II (heated windshield - heated leather steering wheel - 230-volt socket - individually and variably heated front seats - heated rear seat)
- Radio accessories: Digital radio reception DAB/DAB+ (Digital Audio Broadcasting)
- Safety partition net, behind the 2nd row of seats for luggage compartment
- Package: Business I with DAB/DAB+ radio reception and adaptive cruise control (Ford navigation system including Ford SYNC 3 with AppLink and touchscreen - Parking Assistant with parking entry and exit function including front and rear parking sensors - Rear view camera - DAB/DAB+ radio reception - Adaptive cruise control including distance display and distance warning and Pre-Collision Assist with pedestrian and bicycle detection - Traffic Jam Assist with Stop & Go function in conjunction with 8-speed automatic transmission)
- Side windows from 2nd row and rear window, dark tinted

Brief expert findings

Documents submitted	At the time of the inspection, the registration certificate Part 2 (letter) was available, but the registration certificate Part 1 (certificate) was not. (Copy)
VIN comparison	The vehicle identification number (VIN) was read from the vehicle and its conformity with the submitted documents was verified during the inspection by the undersigned.
Inspection	The inspection conditions were sufficient for the assessment of the vehicle. Lifting equipment and a pit were available for examining the vehicle.
Test drive	No test drive/maneuvering was carried out during the inspection of the vehicle.
Engine function test	An engine test run was performed.
Driving readiness	The vehicle was drivable at the time of inspection.

Value reducing factors

No.	Component group	Description
1	Side panel - rear right side	Side panel - Scratch(es) - Smart repair
2	Wheel / tyres	Alloy rim - front left side - Scratch(es) - Loss in value
3	Mudguard - left side	Mudguard - left side - Paint defect - Repair and paint

Wear and tear

No.	Component group	Description
1	Door - rear right side	Door - Scratch(es) - No deduction
2	Bonnet	Bonnet - Stone chips - No deduction
3	Vehicle glazing	Windscreen - Stone chips - No deduction
4	Rear bumper	Rear bumper - Scratch(es) - No deduction
5	Front bumper	Front bumper - Stone chips - No deduction
6	Interior	Interior - Scratch(es) - No deduction

The vehicle shows signs of wear commensurate with its age and use.

Previous damages

No.	Previous damage	Extent of damage (Net)
1	Side right, Provided by user / customer, from 4 Mar 2021	1.580,56 €



Order/Scope of order

The order was placed to prepare a sales report for the vehicle described. This includes the following:

- Description of core relevant information about the vehicle
- Documentation of equipment features
(Delivery by third-party service providers)
- Documentation of damage, defects, missing parts
- Documentation of previous damage, unrepaired previous damage, repainting
- a brief visual or functional inspection of the equipment details if possible.
(Functional tests of driver assistance systems are not included in the scope of services!)
- a photo documentation of the vehicle

Basis for the order

This product is based on the Alphabet Fuhrpark GmbH guidelines for vehicle returns and valuations. The expert makes the explicit findings in each individual case objectively within the framework of the specified standards based on his or her own expertise.

The vehicle inspection takes place in a disassembled state.

Damage or defects that can only be detected during disassembly/diagnosis work or through advanced knowledge remain within the scope of the prognosis risk. An extended risk exists for concealed defects caused by fraudulent deception and not identifiable by the expert.

Damage or defects resulting from normal use or wear and tear of the vehicle will be accepted according to the applicable standard.

There was no explicit identification or monetary consideration of the expected features within the product.

Features which in their nature and severity slightly exceed normal use but do not constitute unacceptable damage will be documented and identified under signs of use if necessary.

Damage or defects which, according to the underlying standard, can no longer be attributed to normal use or wear and tear are listed in the product under "Depreciating Factors".

Depending on the product specification, a monetary ID can be provided. If this takes place, the costs can be 100% d or pro rata depending on the vehicle's age and mileage.

Previous damages

According to available information previous damages were repaired at the vehicle. Traces of repairs, which allow conclusions about the area of repair, were not recognizable during the inspection.

Comments

- Winterradsatz ist kein Bestandteil des Auslieferumfangs.



Figure 1: Diagonal front (left)



Figure 2: Diagonal front (right)



Figure 3: Diagonal rear (left)



Figure 4: Diagonal rear (right)



Figure 5: Interior - front



Figure 6: Interior - rear



Figure 7: Instrument cluster



Figure 8: Instrument panel



Figure 9: Interior 360° view ([Online link](#))



Figure 10: Cargo area

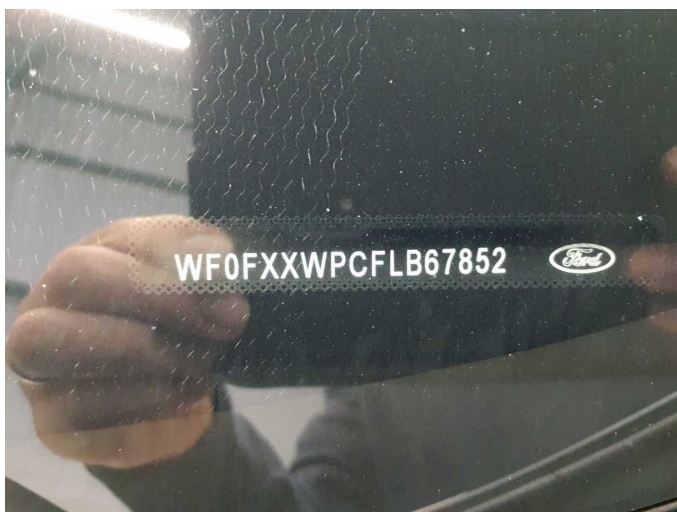


Figure 11: VIN



Figure 12: Mounted tyres



Figure 13: Documents

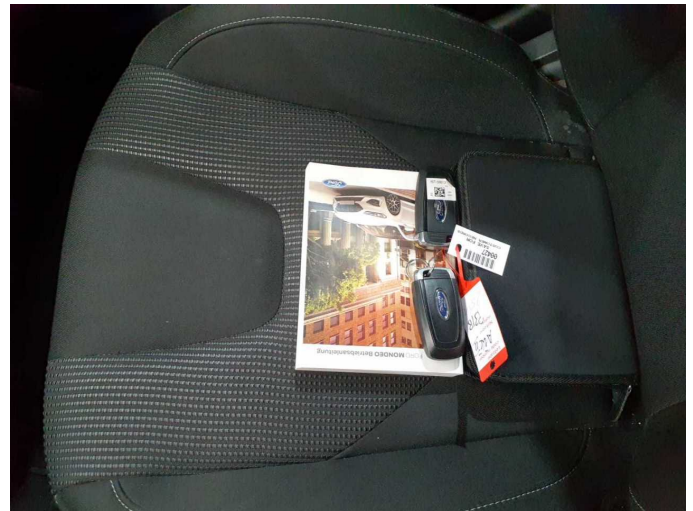


Figure 14: Documents



Figure 15: Additional tyres

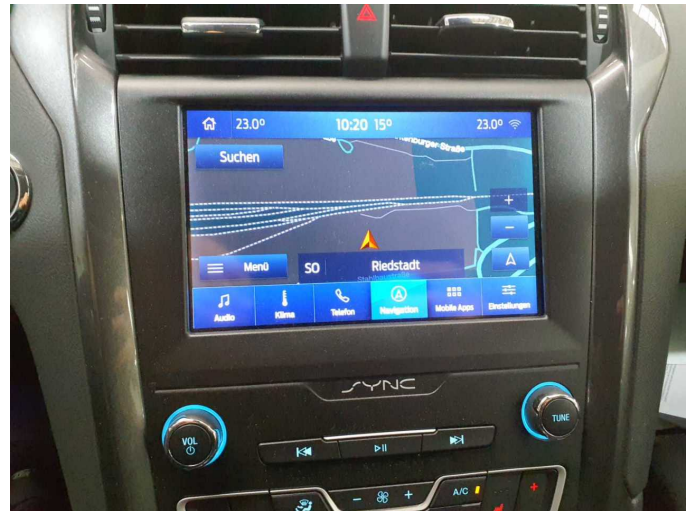


Figure 16: Navigation



Figure 17: Misc.



Figure 18: Misc.



Figure 19: Misc.



Figure 20: Misc.



Figure 21: Misc.



Figure 22: Misc.



Figure 23: Misc.



Figure 24: Misc.



Figure 25: Misc.



Figure 26: Misc.

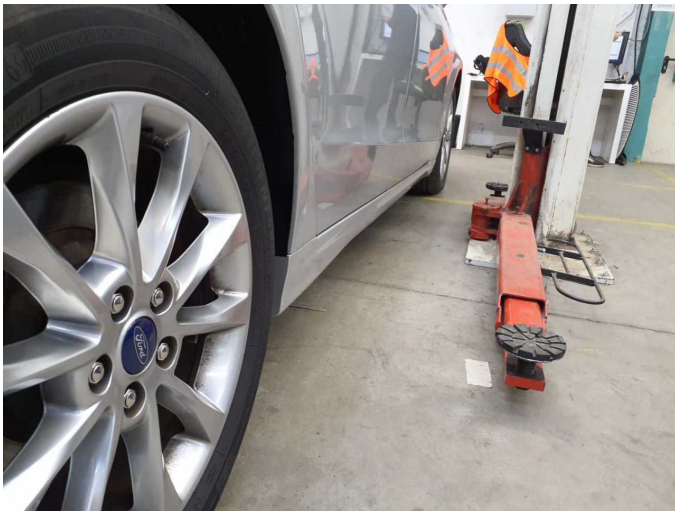


Figure 27: Misc.



Figure 28: Misc.



Figure 29: Misc.



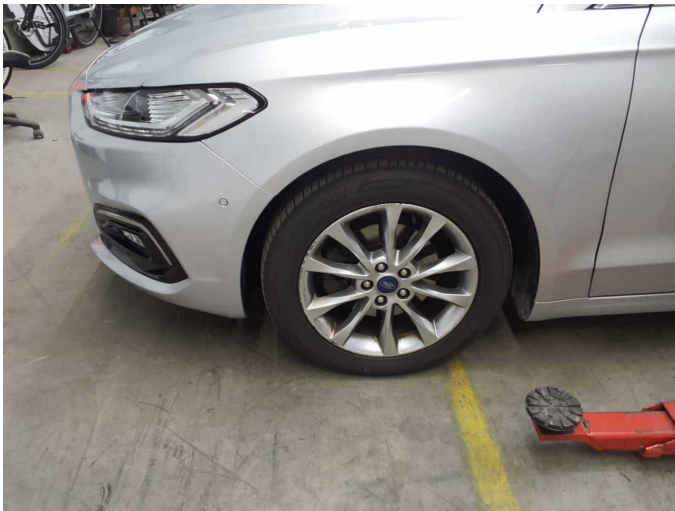
Damage 1: Side panel - rear right side: Side panel - Scratch(es) - Smart repair



Damage 1: Side panel - rear right side: Side panel - Scratch(es) - Smart repair



Damage 2: Wheel / tyres: Alloy rim - front left side - Scratch(es) - Loss in value



Damage 2: Wheel / tyres: Alloy rim - front left side - Scratch(es) - Loss in value



Damage 3: Mudguard - left side: Mudguard - left side - Paint defect - Repair and paint



Damage 3: Mudguard - left side: Mudguard - left side - Paint defect - Repair and paint



Wear and tear 1: Door - rear right side: Door - Scratch(es) - No deduction



Wear and tear 1: Door - rear right side: Door - Scratch(es) - No deduction



Wartungshistorie

(gemäß Auftraggeber Informationen)

Fahrgestellnummer: WF0FXXWPCFLB67852
Hersteller / Modell: FORD FORD Mondeo Turnier 2.0 EcoBlue Aut. Titanium

Datum	KM-Stand	Beschreibung
17.02.2025	136.543	AU
17.07.2024	122.627	Bremse Sonstiges; Bremsflüssigkeit; Bremsflüssigkeit ern; Bremsklötze vorne; Bremsscheiben + Klötze v; Bremsscheiben vorne; Kraftstofffilter ern; Luftfiltereinsatz ern; Motoröl b. Wartung; Ölfilter ern; Regelwartungsdienst
18.04.2024	112.079	Bremse Sonstiges; Bremsklötze hinten; Bremsscheiben + Klötze h; Bremsscheiben hinten
26.06.2023	92.326	Motoröl b. Wartung; Regelwartungsdienst
16.02.2023	82.679	AU
30.08.2022	62.695	Bremsflüssigkeit ern; Bremsklötze hinten; Bremsscheiben + Klötze v; Kraftstofffilter ern; Luftfiltereinsatz ern; Motoröl b. Wartung; Regelwartungsdienst
18.05.2021	29.163	Kleine Inspektion; Motoröl b. Wartung