



# FORD Mondeo

## Mondeo Turnier 1.5 EcoBoost Start-Stopp Aut.

VIN NO WF0FXXWPCFKU73028

Registration Number PCFKU73028



MOT Date



Last Service



Number of Owners



Last Service Mileage



Number of Keys



First Registration Date



2020-02-12

Odometer Reading



110273 km

Country First Registered



Germany

### Inspection Report Summary

Customer	BCA Online	Report Number	P20251007161922
Inspection Date / Place	2025-10-07 / BCA Berlin	Cosmetic Grade	3

### Vehicle Summary

Vehicle Condition	Runner	VAT Type	Qualifying
Fuel Type	Petrol	Gearbox Type	Automatic
Colour		Engine Size (cc)	1498
Engine Size	1.5	No of Doors	5
Body Type	Stationwagon / Estate	Drive Train	Front
Seat Colour		No of Seats	5
Seat Covering Name	anthrazit	Seat Covering	Cloth
Charging Cables		NEDC CO2 Rating (q/km)	170

### Vehicle History & Documents

Service Book Available	Missing	Next Service Mileage	km
Previous Usage		Imported	No
Manufacturer Warrenty			







Equipment

Tinted Glass	Trip Computer	Airbag Status	AndroidAuto
AppleCarPlay	Cabin Pre Heating	Front fog lamps	Heated wing mirrors
Remote adjusting wing mirrors	Roof rails	Split folding rear seats	Central locking
Electrictailgate	Leather steering wheel	Privacy glass	Rear parking sensors
Trafficsignrecognition	USB Socket	Alloys wheels	Anti-lock braking
Bluetooth telephone interface	Cruise control	Front parking sensors	Parking Assistance
Remote central locking	Satellite navigation	Stability control	Electrically folding wing mirrors
Keyless Entry	LED Headlamps	Radio	

Equipment Details

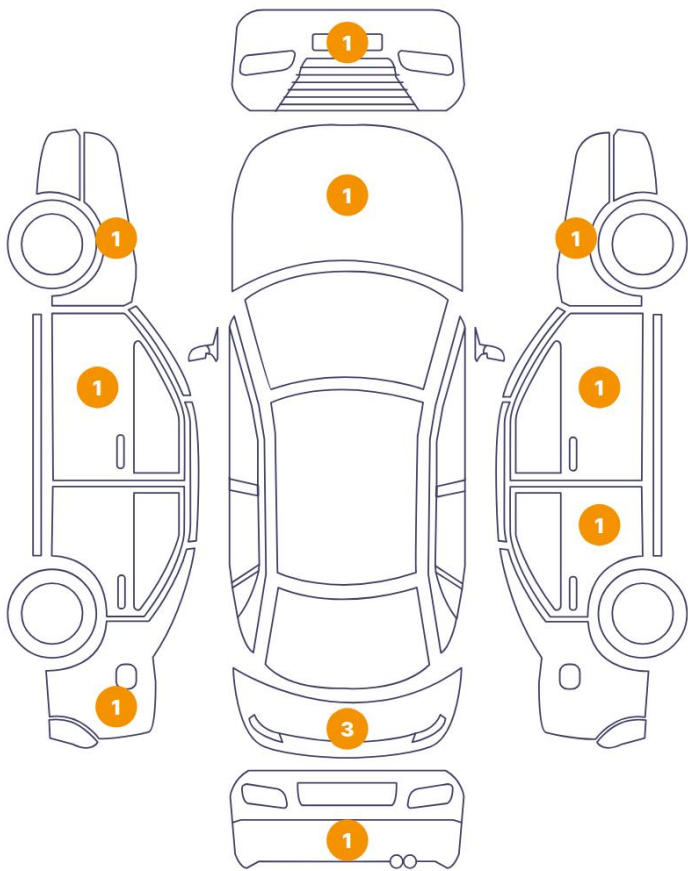
Air Conditioning	Dual Zone Climate Control	Alloy Wheel Size	16
Seat Heating	Front		

Wheels & Tyres

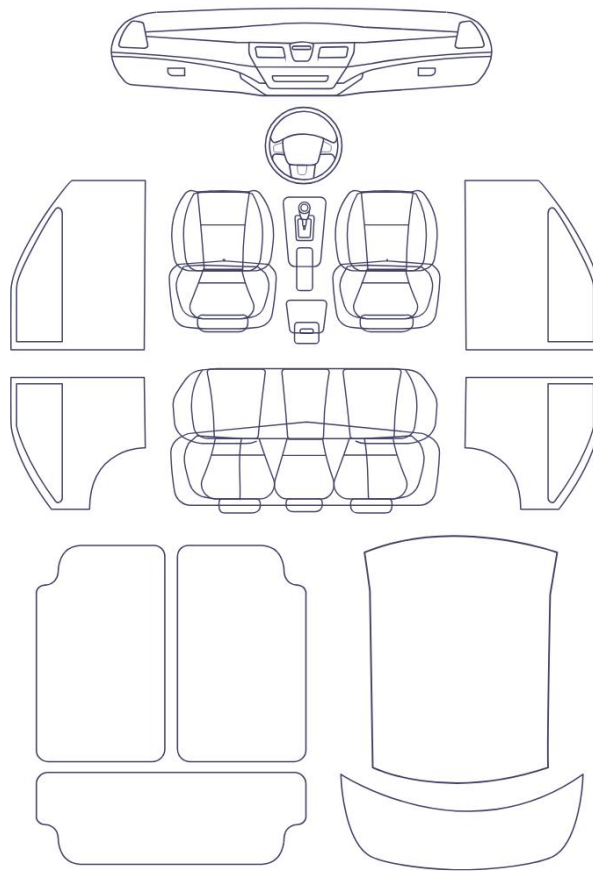
Right Front Tyre Depth	4	Left Front Tyre Depth	4
Right Rear Tyre Depth	3	Left Rear Tyre Depth	3

Cosmetic Damage

12 Schäden

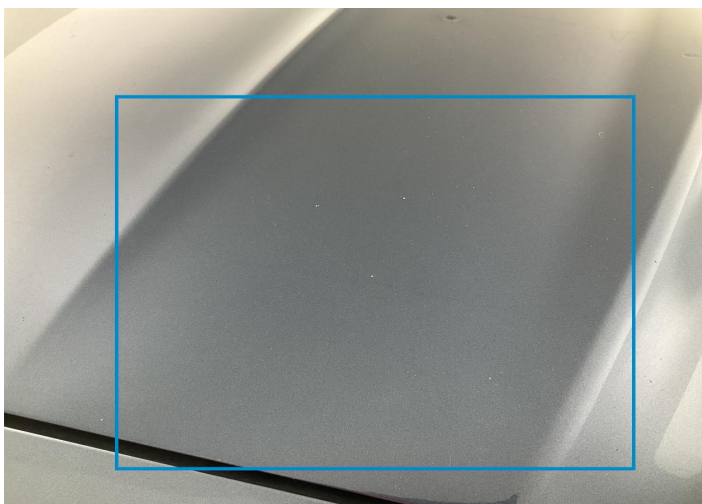


0 Schäden



Component		Damage	Comments
1	Hood	Paint / Chipping	
2	Side Panel / Back Left	Paint / Scratch / Scuff	
3	Corner Bumper / Front Left	Paint / Scratch / Scuff	
4	Fender / Front Right	Paint / Scratch / Scuff	
5	Door / Back Right	Paint / Chipping	
6	Bumper / Back	Paint / Scratch / Scuff	
7	Tailgate	Paint / Scratch / Scuff	
8	Fender / Front Left	Paint / Chipping	
9	Tailgate	Paint / Chipping	
10	Door / Front Right	Paint / Chipping	
11	Tailgate	Paint / Chipping	
12	Door / Front Left	Paint / Scratch / Scuff	





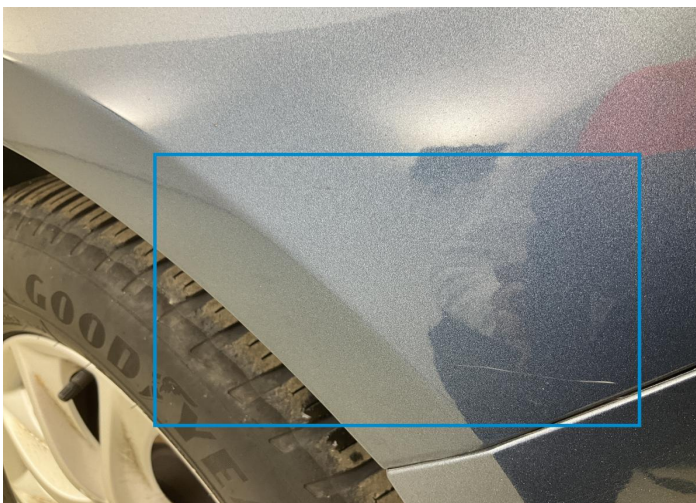
1. Hood  
Paint / Chipping -



2. Side Panel / Back Left  
Paint / Scratch / Scuff -



3. Corner Bumper / Front Left  
Paint / Scratch / Scuff -



4. Fender / Front Right  
Paint / Scratch / Scuff -



5. Door / Back Right  
Paint / Chipping -



6. Bumper / Back  
Paint / Scratch / Scuff -





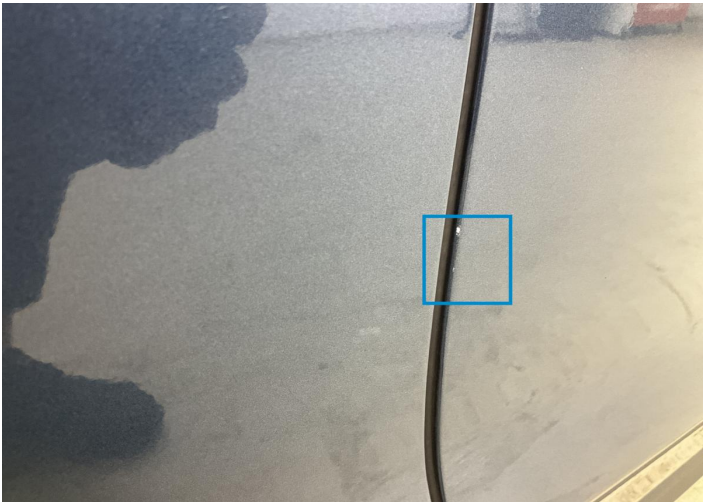
7. Tailgate  
Paint / Scratch / Scuff -



8. Fender / Front Left  
Paint / Chipping -



9. Tailgate  
Paint / Chipping -



10. Door / Front Right  
Paint / Chipping -



11. Tailgate  
Paint / Chipping -



12. Door / Front Left  
Paint / Scratch / Scuff -

## Mechanical Condition

### Control Lights

Display Defect	✓	ABS Warning Light	✓
ESP Fault/Traction Control Malfunction Light	✓	Airbag Warning Light	✓
Oil Pressure Warning Light	✓	Brake Warning Light	✓
Power Steering Warning Light	✓	Alternator / Battery	✓
No Dashboard Lights	✓	Tire Pressure Monitoring System	✓

### Engine

Engine Status / EML	✓	Engine Leak Visible	✓
Engine Starts	✓		

### Gearbox

Gear Box	✓
----------	---

### Equipments Test

Electric Windows	✓	Navigation System	✓
AC / Heating System	✓	Main & Spare Keys Functioning	✓
Other Equipments	✓		

### Levels

Brakes Fluid	✓	Coolant Fluid	✓
--------------	---	---------------	---



Test Drive Inspection

Steering Wheel

Steering | Noise / Anomaly

Engine

Engine Noise The Gears Scratch / Skip / Abnormal Operation

Fume Quantity Power Loss

Brake

Brake System Anomaly

General

Test Driven Status

- No troubles detected, good condition or correct tests, according to vehicle age and mileage
- Damages or malfunction detected that requires repairs by the buyer
- Not applicable
- Not tested

Disclaimer

Please also note the "UserGuide condition report", which shows the scope of the vehicle description. [User Guide](#)