



FORD Mondeo

Mondeo Turnier 2.0 TDCi Start-Stopp PowerShift-Aut

VIN NO WF0FXXWPCFEG34297

Registration Number PCFEG34297



MOT Date



Last Service

2017-07-03

Number of Owners



Last Service Mileage

90091

Number of Keys



First Registration Date

2015-01-23

Odometer Reading

227278 km

Country First Registered



Inspection Report Summary

Customer	BCA Online	Report Number	P20250915124024
Inspection Date / Place	2025-09-15 / ARS Altmann AG Wolnzach	Cosmetic Grade	5

Vehicle Summary

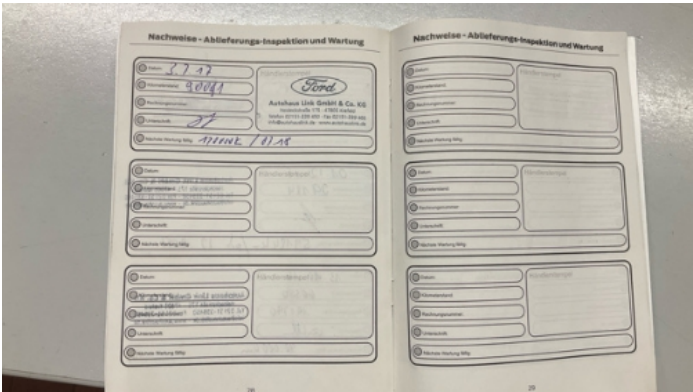
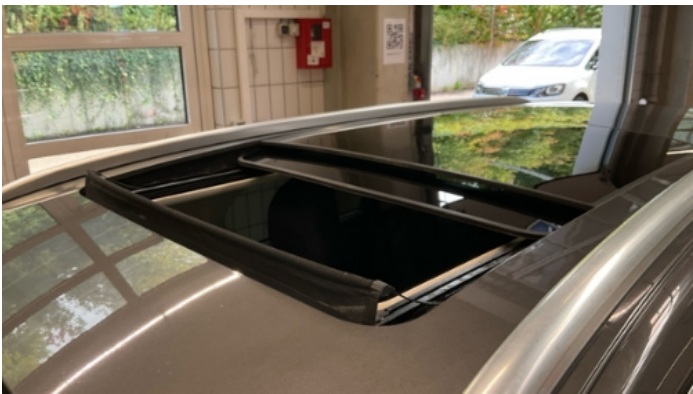
Vehicle Condition	Runner	VAT Type	Margin
Fuel Type	Diesel	Road Worthy	Yes
Colour	Grey	Engine Size (cc)	1997
Engine Size	2.0	No of Doors	5
Body Type	Stationwagon / Estate	Drive Train	Front
Seat Colour		No of Seats	5
Seat Covering Name		Seat Covering	Cloth/Synthetic Leather
Charging Cables		NEDC CO2 Rating (q/km)	138
Gearbox Type	Automatic		

Vehicle History & Documents

Service Book Available	Present	Next Service Mileage	km
Previous Usage		Imported	No
Manufacturer Warrenty			







Equipment

Tinted Glass	Airbag Status	Anti-lock braking	Cruise control
Front parking sensors	Remote adjusting wing mirrors	Reversing Camera	Satellite navigation
Sunroof	Electrically adjustable seats	Electrictailgate	LED Headlamps
Rear parking sensors	Trip Computer	Alloys wheels	Bluetooth telephone interface
Front fog lamps	Heated windscreen	Remote central locking	Roof rails
Stability control	Central locking	Electrically folding wing mirrors	Leather steering wheel
Radio			

Equipment Details

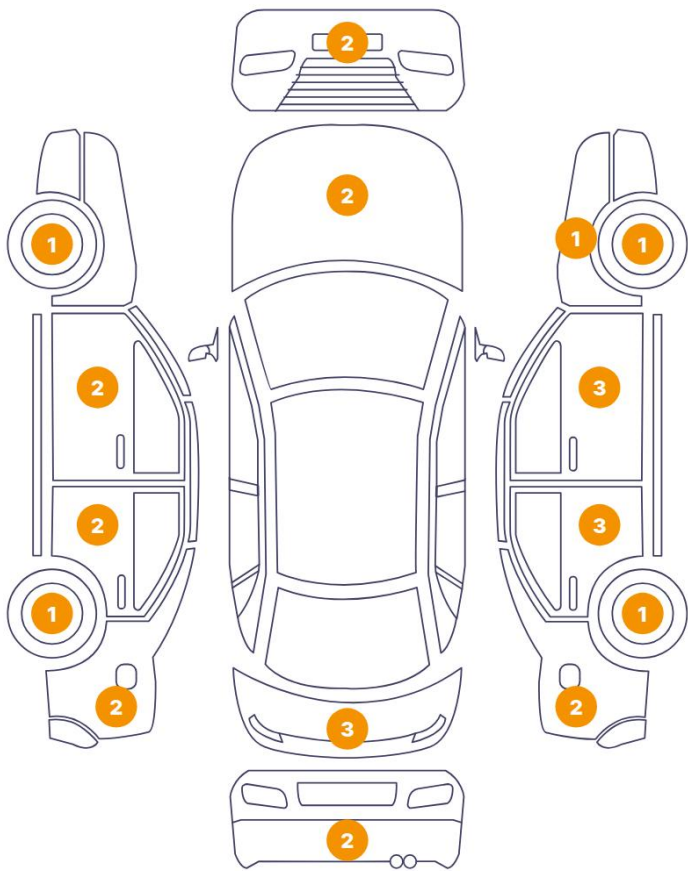
Air Conditioning	Dual Zone Climate Control	Alloy Wheel Size	18
Seat Heating	Front	Sunroof Type	Opening Panoramic

Wheels & Tyres

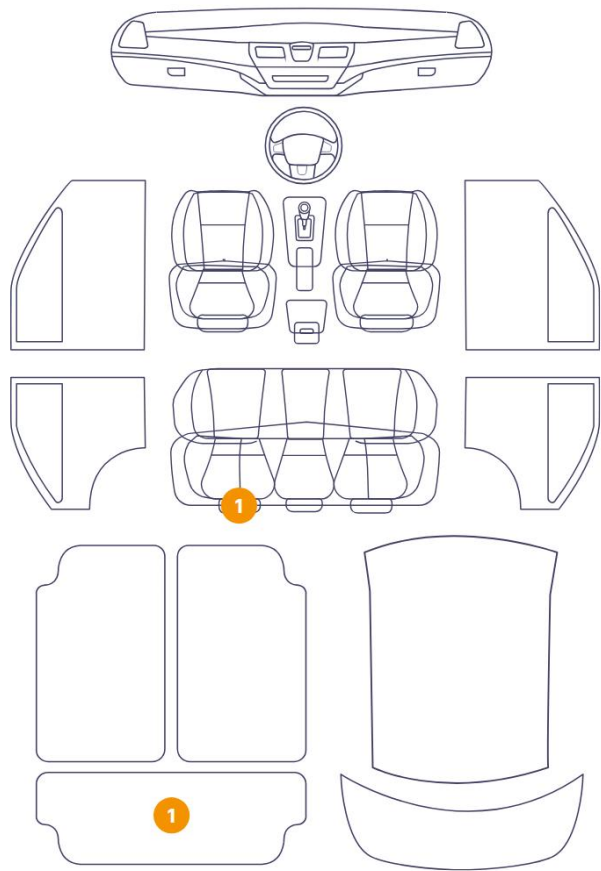
Right Front Tyre Depth	5	Left Front Tyre Depth	5
Right Rear Tyre Depth	5	Left Rear Tyre Depth	5

Cosmetic Damage

28 Schäden

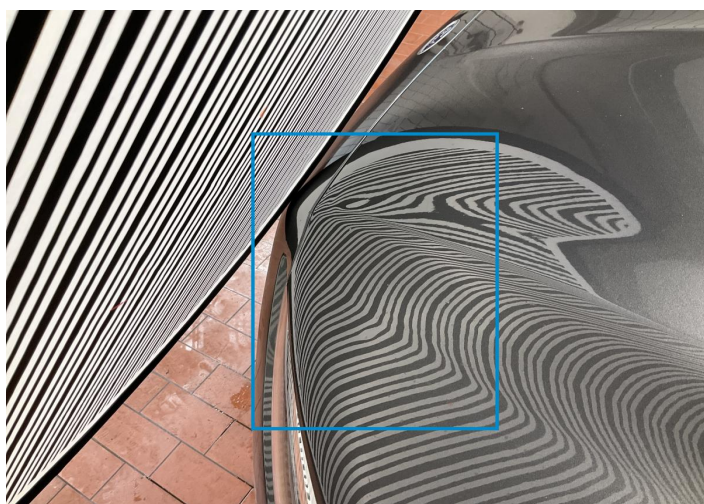


2 Schäden

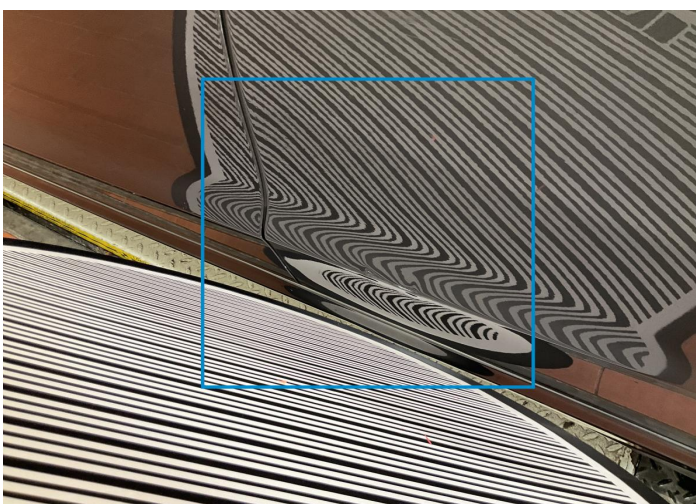


Component		Damage	Comments
1	Hood	Bodywork / Dent / Dent	
2	Door / Back Left	Bodywork / Dent / Dent	
3	Side Panel / Back Left	Bodywork / Dent / Dent	
4	Tailgate	Bodywork / Dent / Dent	
5	Side Panel / Back Right	Bodywork / Dent / Dent	
6	Pillar / Back Right	Bodywork / Dent / Dent	
7	Door / Back Right	Bodywork / Dent / Dent	
8	Door / Front Right	Bodywork / Dent / Dent	
9	Hood	Bodywork / Dent / Dent	
10	Bumper / Front	Paint / Scratch / Scuff	
11	Rim / Front Left	Out of Bodywork / Scratch	
12	Mirror Shell / Front Left	Paint / Scratch / Scuff	

13	Door / Front Left	Paint / Scratch / Scuff
14	Door / Back Left	Paint / Scratch / Scuff
15	Seat / Back Left	Interior / Dirty
16	Side Panel / Back Left	Paint / Scratch / Scuff
17	Rim / Back Left	Out of Bodywork / Scratch
18	Bumper / Back	Paint / Scratch / Scuff
19	Bumper / Back	Bodywork / Breakage / Hole
20	Tailgate	Paint / Scratch / Scuff
21	Luggage Space Cover / Back	Interior / Missing
22	Tailgate	Paint / Scratch / Scuff
23	Rim / Back Right	Out of Bodywork / Scratch
24	Door / Back Right	Paint / Scratch / Scuff
25	Side Panel / Back Right	Paint / Scratch / Scuff
26	Door / Front Right	Paint / Scratch / Scuff
27	Mirror Shell / Front Right	Paint / Scratch / Scuff
28	Rim / Front Right	Out of Bodywork / Scratch
29	Fender / Front Right	Paint / Scratch / Scuff
30	Bumper / Front	Paint / Scratch / Scuff



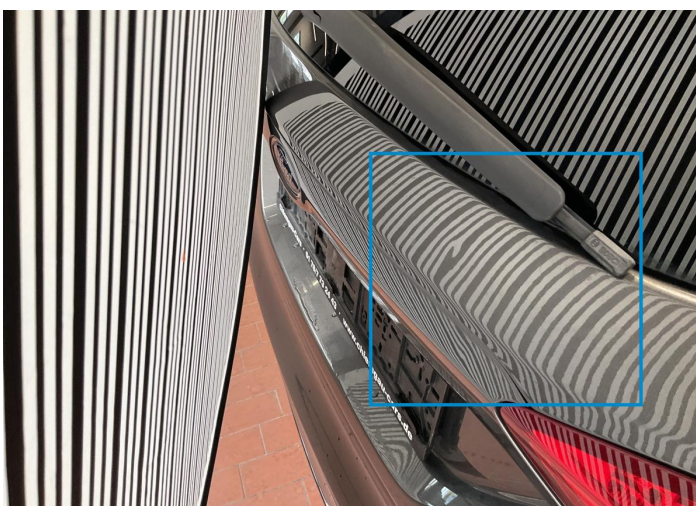
1. Hood
Bodywork / Dent / Dent -



2. Door / Back Left
Bodywork / Dent / Dent -



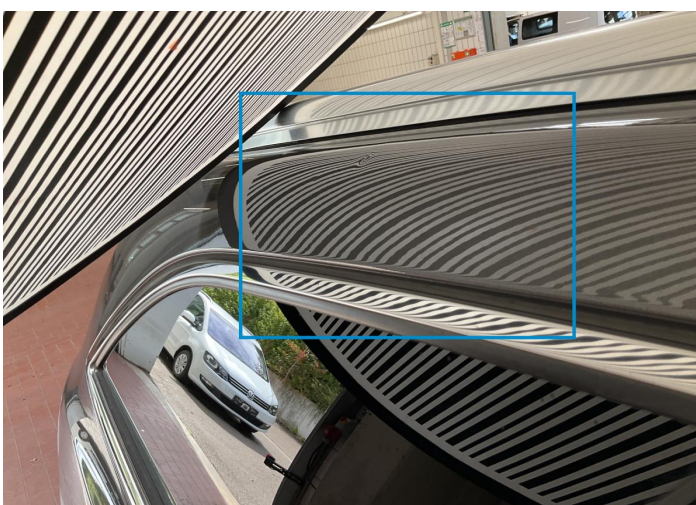
3. Side Panel / Back Left
Bodywork / Dent / Dent -



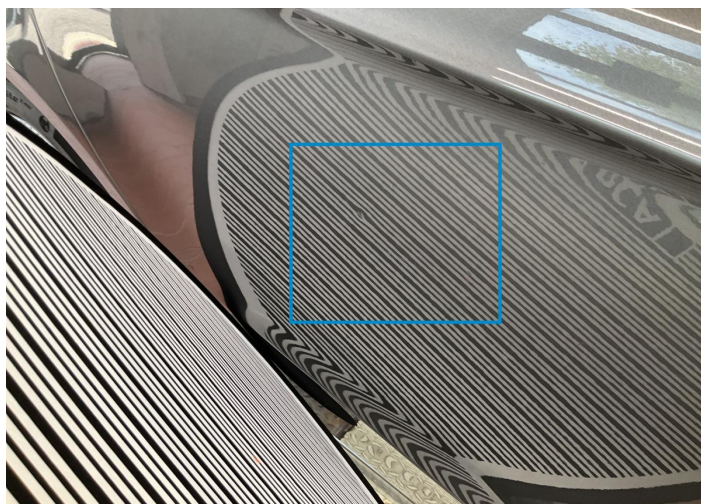
4. Tailgate
Bodywork / Dent / Dent -



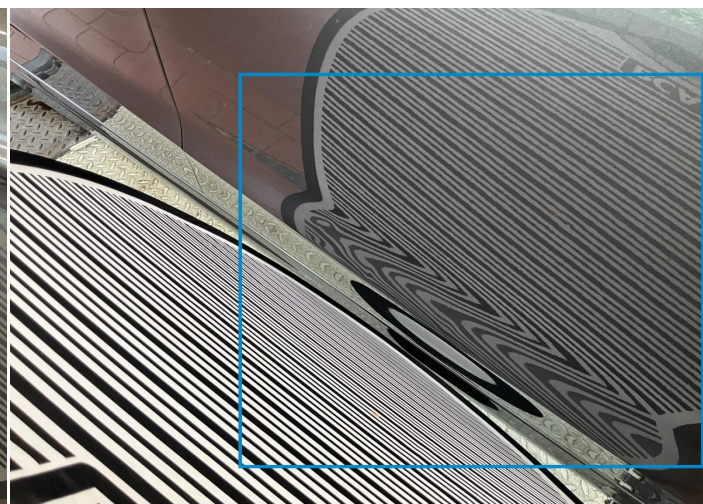
5. Side Panel / Back Right
Bodywork / Dent / Dent -



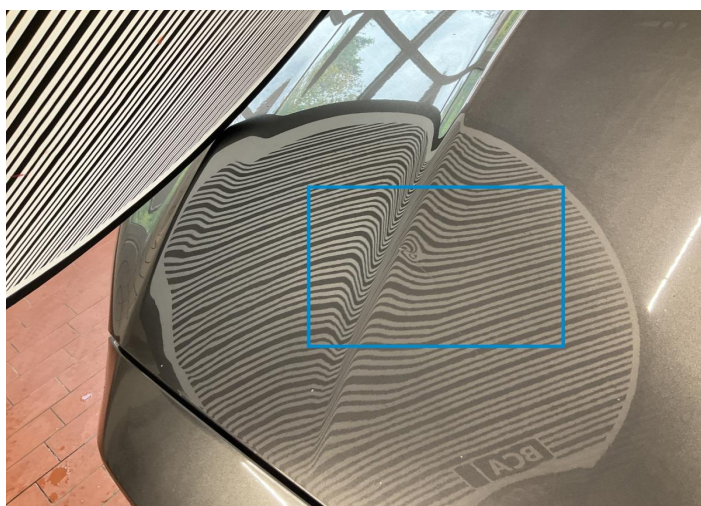
6. Pillar / Back Right
Bodywork / Dent / Dent -



7. Door / Back Right
Bodywork / Dent / Dent -



8. Door / Front Right
Bodywork / Dent / Dent -



9. Hood
Bodywork / Dent / Dent -



10. Bumper / Front
Paint / Scratch / Scuff -



11. Rim / Front Left
Out of Bodywork / Scratch -



12. Mirror Shell / Front Left
Paint / Scratch / Scuff -



13. Door / Front Left
Paint / Scratch / Scuff -



14. Door / Back Left
Paint / Scratch / Scuff -



15. Seat / Back Left
Interior / Dirty -



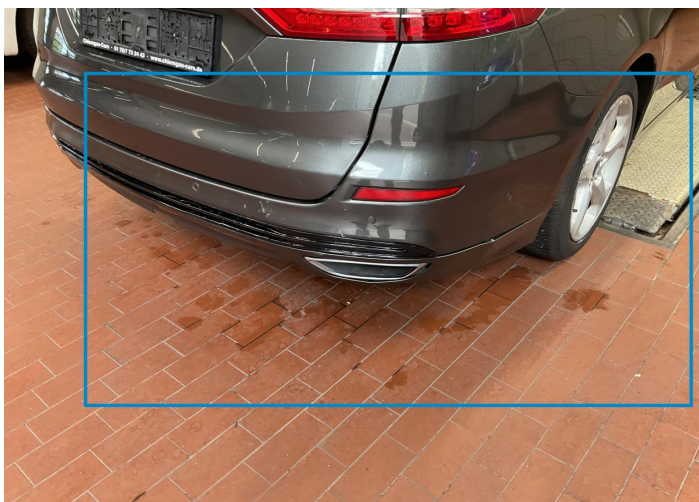
16. Side Panel / Back Left
Paint / Scratch / Scuff -



17. Rim / Back Left
Out of Bodywork / Scratch -



18. Bumper / Back
Paint / Scratch / Scuff -



19. Bumper / Back
Bodywork / Breakage / Hole -



20. Tailgate
Paint / Scratch / Scuff -



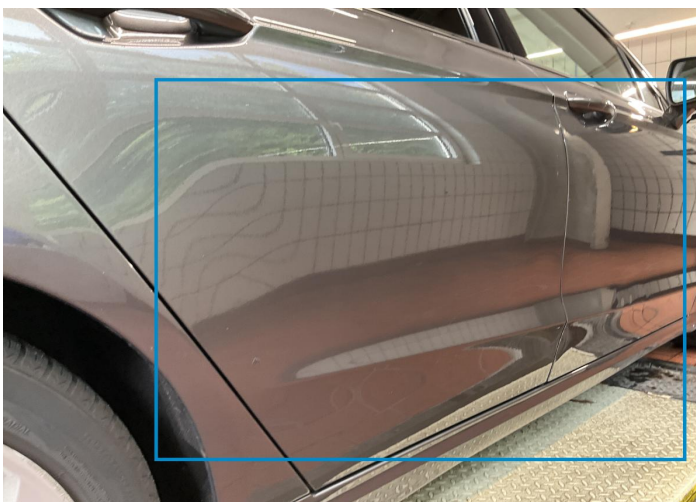
21. Luggage Space Cover / Back
Interior / Missing -



22. Tailgate
Paint / Scratch / Scuff -



23. Rim / Back Right
Out of Bodywork / Scratch -



24. Door / Back Right
Paint / Scratch / Scuff -



25. Side Panel / Back Right
Paint / Scratch / Scuff -



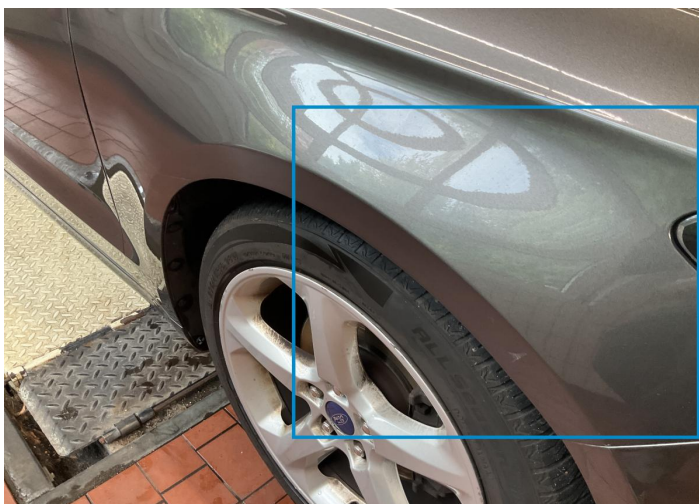
26. Door / Front Right
Paint / Scratch / Scuff -



27. Mirror Shell / Front Right
Paint / Scratch / Scuff -



28. Rim / Front Right
Out of Bodywork / Scratch -



29. Fender / Front Right
Paint / Scratch / Scuff -



30. Bumper / Front
Paint / Scratch / Scuff -

Mechanical Condition

Control Lights

Display Defect	✓	ABS Warning Light	✓
Oil Pressure Warning Light	✓	Airbag Warning Light	✓
Brake Warning Light	✓	Power Steering Warning Light	✓
Diesel Particulate Filter Light	✓	ESP Fault/Traction Control Malfunction Light	✓
Alternator / Battery	✓	No Dashboard Lights	✓

Engine

Engine Leak Visible	✓	Engine Starts	✓
Engine Status / EML	✓		

Levels

Coolant Fluid	✓	Brakes Fluid	✓
---------------	---	--------------	---

Equipments Test

Electric Windows	✓	Central Locking	✓
Audio Equipment	✓	Navigation System	✓
AC / Heating System	✓		

Gearbox

Gear Box	✓
----------	---

Test Drive Inspection

Engine			
Fume Quantity	✓	Engine Noise	✓
The Gears Scratch / Skip / Abnormal Operation	✓	Power Loss	✓
Steering Wheel			
Steering Noise / Anomaly	✓		
Brake			
Brake System Anomaly	✓		
Gearbox			
Automatic Shift	✓		
✓ <i>No troubles detected, good condition or correct tests, according to vehicle age and mileage</i>			
! <i>Damages or malfunction detected that requires repairs by the buyer</i>			
NA <i>Not applicable</i>			
☐ <i>Not tested</i>			

Disclaimer

Please also note the "UserGuide condition report", which shows the scope of the vehicle description.

[User Guide](#)