



Expertise

Protocol number: 41578980
Order No. / Reference: 25196527
Inspection date: 16 Sept 2025

Manufacturer: Ford	Model: Transit 350 L3H2 Lkw VA Trend
VIN: WF0EXXTTREMC80398	



Vehicle details	
Manufacturer / Type / Model / Equipment	
Ford Transit 350 L3H2 Lkw VA Trend	
Vehicle Identification number	WF0EXXTTREMC80398
Mileage (Read)	76,092 km
First registration	8 Nov 2021
Number of holders	1
Next periodical technical inspection	11/2025
(Report on hand)	
Power / Engine displacement	96 kw / 1,995 ccm
Fuel type / Cylinder	Diesel / 4
Gearbox / Number of gears	Manual / 6
Type of drive	Front drive
Type of vehicle	Van
Colour / colour code	Frost-Weiß
Doors / Seats	4 / 3
Upholstery type	Cloth
Colour of upholstery	Anthracite-Black
Driving readiness	Roadworthy



Vehicle details

Maintenance booklet / proof	digital proof / complete	Next maintenance in	0 km
Last maintenance on / at	04/2023 at 41,061 km		
Key is / should be	1 / 2	FZG documents	ZB#2 (B) was available (copy), ZB#1 (S) was not available
		Letter No.	GH372257
Previous damage / Accident	Detectable	Repainting	Detectable
Inspection conditions	sufficient	Lifting equipment / pit	yes
Test drive	Not performed	Engine function test	Performed
Driving readiness	Roadworthy		
Manufacturer key number/ type code number	8566 / BNG 09990		
Emission standard	EURO6;WLTP;AR;PI/CI;N1 III, N2	Fine dust sticker	
Permitted total weight	3,500 kg	Empty weight	

Tyres

Mounted tyres

#	Tyre size	Type of tyre	Manufacturer	Tread depth
1)	235/65 R16 113R	Summer tyres on Steel rim with wheel cover	Continental	4mm / 4mm
2)	235/65 R16 113R	Summer tyres on Steel rim with wheel cover	Continental	5mm / 5mm

Additional tyres

#	Tyre size	Type of tyre	Manufacturer	Tread depth
1)	235/65 R16 113S	Winter tyres on Steel	Goodyear	6mm / 6mm
2)	235/65 R16 113S	Winter tyres on Steel	Goodyear	8mm / 8mm

Replacement

Typ	Tyre size	Type of tyre	Manufacturer	Tread depth
E	235/65 R16 113R C	Summer tyres on Steel	Continental	7 mm

Legend: Tread depth information for tires on the left is in the first place, for tires on the right is in the second place on the axle in the direction of travel

Equipment

Standard equipment

- | | |
|--|--|
| <ul style="list-style-type: none"> • 1 battery • Anti-lock braking system with electronic brake-force distribution (EBD) • On-board computer • tachometer • Electronic Safety and Stability Program (ESP) with Traction Control (TSC) • Front window lifter, electric • Warranty 2-year Ford new car warranty including the Ford Assistance mobility guarantee • Transmission: 6-speed transmission • Interior lighting with delay circuit • Paint finish: Solid paint • Cargo floor: rubberized • MyKey key system • Package: Rear Seat Package 2 • Particulate filter: diesel particulate filter • Wheels: Steel wheels 6.5 J x 16 with 235/65 R 16 tires • Sliding door entry light automatically when door is opened • Rear mud flaps • Low side wall cladding • Power steering • Seat belts • Rear bumper with integrated step • Plastic partition with window (including protective grille) • Immobiliser • Central locking with remote control • Overhead storage compartment at the front | <ul style="list-style-type: none"> • Driver's side airbag • Exterior mirrors, electrically adjustable and heated • Battery : Battery life, programming of battery life to 10 min • roof, medium • Third brake light • Windows: Sliding windows, right and left (at the height of the 2nd row of seats) • Ford Easy Fuel • Generator, high-performance version • Cruise control including leather steering wheel • Glove compartment with lockable lid • Front air conditioning • Cargo area lighting • Steering column, adjustable in height and reach • Fog light • Parking pilot system front and rear • Wheels: Hubcaps • Headlights with static cornering light • Sliding door: Sliding door, right • Side protection strips • Crosswind Assist and Rollover Protection (RSC - Roll Stability Control) • Start-stop system • Daytime running light • Lashing eyes • Heat-insulating glazing, slightly tinted • Second key with remote control |
|--|--|

Extra equipment

- | | |
|---|--|
| <ul style="list-style-type: none"> • "S3" 2 locking bars / lashing rail / transverse and longitudinal • LED lights in the cargo area • Package: Load securing package • Radio: Audio system 24: Ford audio system including Ford SYNC 3 with AppLink, DAB/DAB+ navigation system (Radio - FordPass Connect including live traffic information and Wi-Fi - 8" TFT multifunction display - 4 speakers, antenna, USB port - Integrated control panel and audio remote control on the steering wheel - Ford SYNC 3 (communication and entertainment system, Bluetooth and USB, integration of various telephony functions and hands-free system, voice control, SMS reading/sending function, private mode, emergency call assistant...) - AppLink - Supports Android Auto and Apple CarPlay - Emergency Call Assistant) • Speed limiter 130 km/h (cannot be switched off) • Voltage converter (230 V (socket)) • Wheels/Tires: Spare wheel, steel wheel | <ul style="list-style-type: none"> • Double-wing rear door with 256° opening angle, (without window) (without rear windows, with holding magnets) • Package: Visibility Package III (electrically adjustable, heated, and folding exterior mirrors - Lane Keeping Assist with Drowsiness Warning and High Beam Assist - heated windshield - high-mounted LED exterior downlight - adjustable instrument lighting - fog lights - front and rear parking sensors - rearview camera with image transmission of the rear path on the display - windshield wipers with rain sensor - headlight assist with day/night sensor - windshield washer fluid sensor) |
|---|--|



- Seats: Seat Package 29 (driver's seat, 4-way electrically adjustable (forward/backward, backrest, seat cushion angle, height) - double passenger seat with storage compartment under individually foldable seat cushions - height-adjustable headrests - tray integrated into the double passenger seat (fold-out) - heated front seats - inside armrest for driver - manual lumbar support (driver's seat) - passenger side airbag, front head/shoulder airbags and front side airbags - seat upholstery: fabric)

Brief expert findings

Documents submitted	At the time of the inspection, the registration certificate Part 2 (letter) was available, but the registration certificate Part 1 (certificate) was not. (Copy)
VIN comparison	The vehicle identification number (VIN) was read from the vehicle and its conformity with the submitted documents was verified during the inspection by the undersigned.
Inspection	The inspection conditions were sufficient for the assessment of the vehicle. Lifting equipment and a pit were available for examining the vehicle.
Test drive	No test drive/maneuvering was carried out during the inspection of the vehicle.
Engine function test	An engine test run was performed.
Driving readiness	The vehicle was drivable at the time of inspection.

Value reducing factors

No.	Component group	Description
1	Wheel / tyres	Wheel cover - rear right side - Scratch(es) - Replace
2	Bonnet	Bonnet (1) - dent(s) - Smart repair
3	Indicator - front	Mirror - right side - Leaking - Replace
4	Trim / covers	Roof lining (Dachkonsole/ablage-schraube/begästigung fehlt) - Loose - Un- / install
5	Front bumper	Front bumper - Scratch(es) - Smart repair
6	Body	Body - Glued / labelled - De-glue / neutralise
7	Misc.	Inspection / maintenance - Due - Perform
8	Boot lid / rear door	Rear door - right side (6 Dellen +Kratzer) - Dent / paintcoat damage - Repair and paint
9	Vehicle glazing	Windscreen - Broken / torn - repair according to calculation

Wear and tear

No.	Component group	Description
1	Interior	Cargo space division - Scratch(es) - No deduction
2	Door - front left side	Door - Scratch(es) - No deduction
3	Sliding door, right	Sliding door - Scratch(es) - No deduction
4	Door - front right side	Door - Scratch(es) - No deduction

The vehicle shows signs of wear commensurate with its age and use.

Missing parts

Description

Documents - Log book

Equipment - Vehicle key (1 von 2)



Previous damages

No.	Previous damage	Extent of damage (Net)
1	Side right, Provided by user / customer, from 23 Oct 2022	2.110,10 €

Repainting

No. Repainting

1	Door - rear right side, Professionally carried out, Invoice of repair done Non-existent
---	---

Paint coat thickness measurement

Door - rear right side	172 µm
------------------------	--------

Order/Scope of order

The order was placed to prepare a sales report for the vehicle described. This includes the following:

- Description of core relevant information about the vehicle
- Documentation of equipment features
(Delivery by third-party service providers)
- Documentation of damage, defects, missing parts
- Documentation of previous damage, unrepaired previous damage, repainting
- a brief visual or functional inspection of the equipment details if possible.
(Functional tests of driver assistance systems are not included in the scope of services!)
- a photo documentation of the vehicle

Basis for the order

This product is based on the guidelines for vehicle returns and valuations of light commercial vehicles from Alphabet Fuhrparkmanagement GmbH. The expert makes the explicit findings in each individual case objectively within the framework of the specified standards based on his or her own expertise.

The vehicle inspection takes place in a disassembled state.

Damage or defects that can only be detected during disassembly/diagnosis work or through advanced knowledge remain within the scope of the prognosis risk. An extended risk exists for concealed defects caused by fraudulent deception and not identifiable by the expert.

Damage or defects resulting from normal use or wear and tear of the vehicle will be accepted according to the applicable standard.

There was no explicit identification or monetary consideration of the expected features within the product.

Features which in their nature and severity slightly exceed normal use but do not constitute unacceptable damage will be documented and identified under signs of use if necessary.

Damage or defects which, according to the underlying standard, can no longer be attributed to normal use or wear and tear are listed in the product under "Depreciating Factors".

Depending on the product specification, a monetary ID can be provided. If this takes place, the costs can be 100% d or pro rata depending on the vehicle's age and mileage.

Previous damages

According to available information previous damages were repaired at the vehicle. Traces of repairs, which allow conclusions about the area of repair, were not recognizable during the inspection.



Figure 1: Diagonal front (left)



Figure 2: Diagonal front (right)



Figure 3: Diagonal rear (left)



Figure 4: Diagonal rear (right)



Figure 5: Interior - front

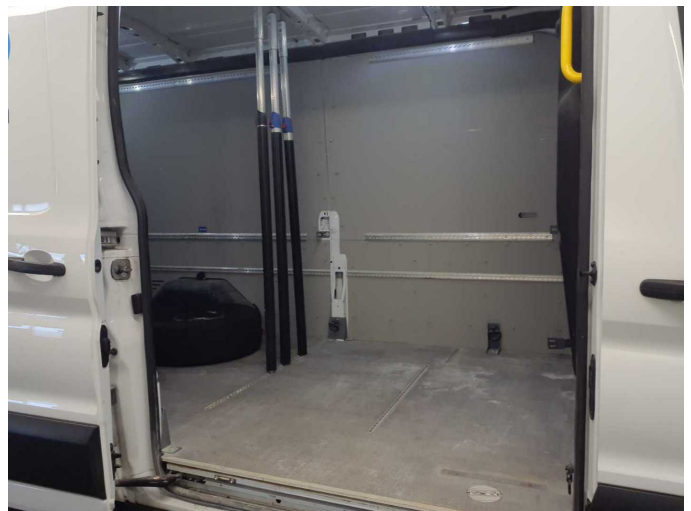


Figure 6: Interior - rear



Figure 7: Instrument cluster



Figure 8: Instrument panel



Figure 9: Interior 360° view



Figure 10: Cargo area



Figure 11: VIN



Figure 12: Mounted tyres



Figure 13: Documents

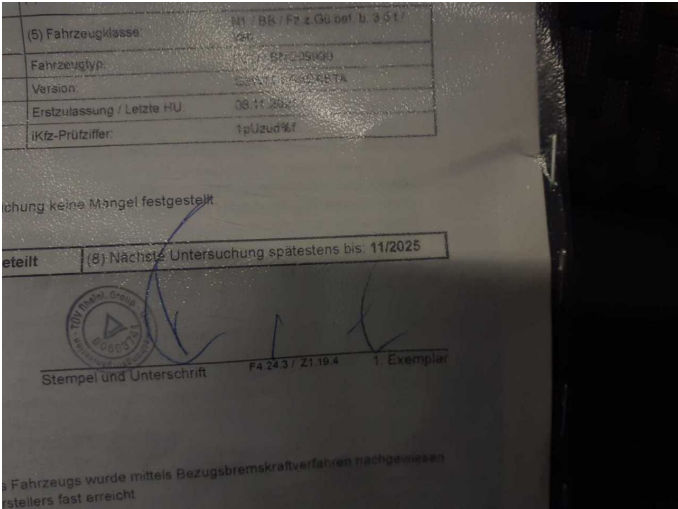


Figure 14: Documents



Figure 15: Additional tyres



Figure 16: Navigation



Figure 17: Misc.



Figure 18: Misc.

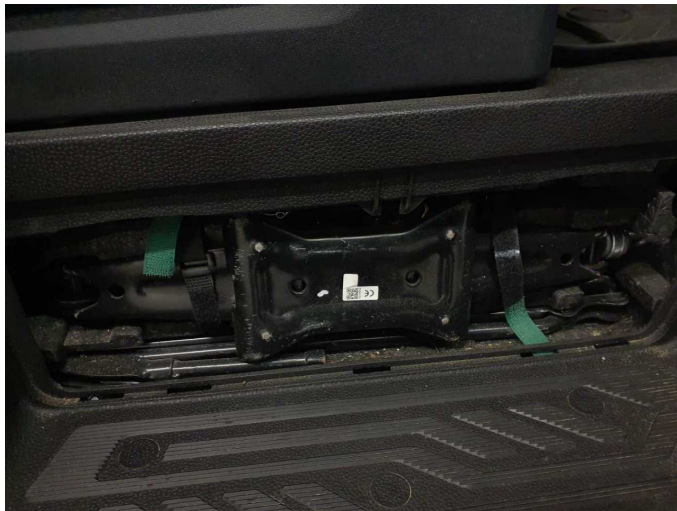


Figure 19: Misc.



Figure 20: Misc.

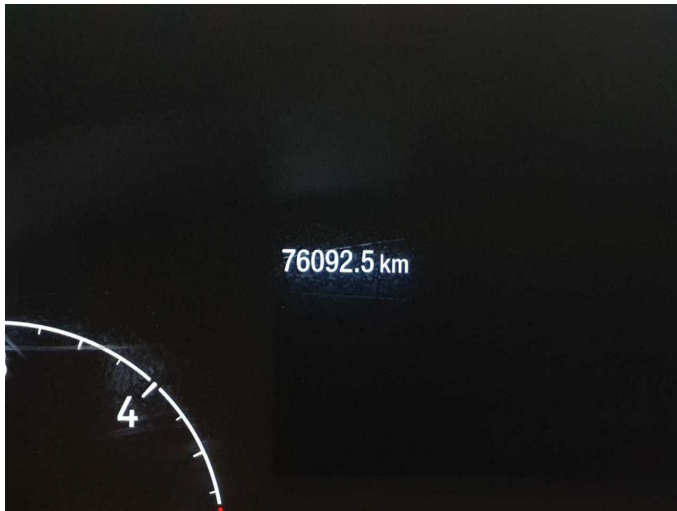


Figure 21: Misc.



Figure 22: Misc.



Figure 23: Misc.



Figure 24: Misc.

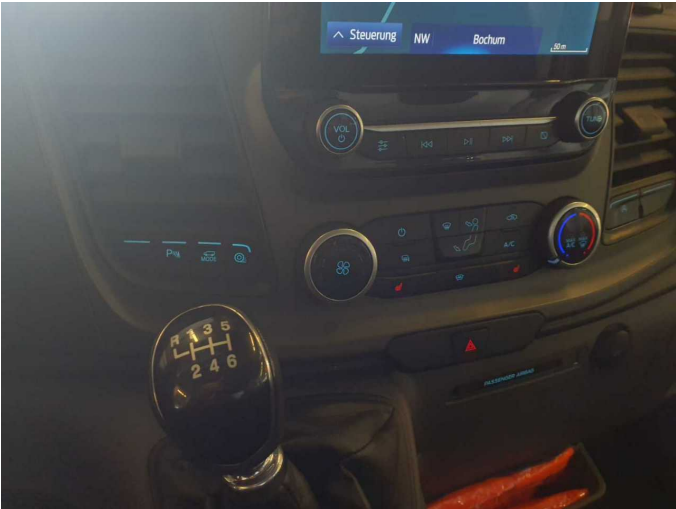


Figure 25: Misc.

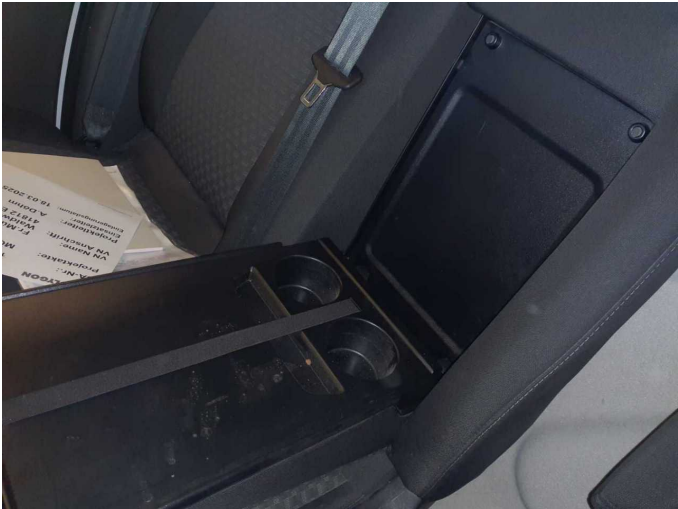


Figure 26: Misc.



Figure 27: Misc.



Damage 1: Wheel / tyres: Wheel cover - rear right side - Scratch(es) - Replace



Damage 1: Wheel / tyres: Wheel cover - rear right side - Scratch(es) - Replace



Damage 1: Wheel / tyres: Wheel cover - rear right side - Scratch(es) - Replace



Damage 2: Bonnet: Bonnet (1) - dent(s) - Smart repair



Damage 2: Bonnet: Bonnet (1) - dent(s) - Smart repair



Damage 3: Indicator - front: Mirror - right side - Leaking - Replace



Damage 3: Indicator - front: Mirror - right side - Leaking - Replace



Damage 4: Trim / covers: Roof lining (Dachkonsole/ablage-schraube/ begästigung fehlt) - Loose - Un- / install



Damage 4: Trim / covers: Roof lining (Dachkonsole/ablage-schraube/ begästigung fehlt) - Loose - Un- / install



Damage 4: Trim / covers: Roof lining (Dachkonsole/ablage-schraube/ begästigung fehlt) - Loose - Un- / install



Damage 4: Trim / covers: Roof lining (Dachkonsole/ablage-schraube/ begästigung fehlt) - Loose - Un- / install



Damage 5: Front bumper: Front bumper - Scratch(es) - Smart repair



Damage 5: Front bumper: Front bumper - Scratch(es) - Smart repair



Damage 5: Front bumper: Front bumper - Scratch(es) - Smart repair



Damage 6: Body: Body - Glued / labelled - De-glue / neutralise



Damage 6: Body: Body - Glued / labelled - De-glue / neutralise



Damage 6: Body: Body - Glued / labelled - De-glue / neutralise



Damage 6: Body: Body - Glued / labelled - De-glue / neutralise



Damage 6: Body: Body - Glued / labelled - De-glue / neutralise



Damage 7: Misc.: Inspection / maintenance - Due - Perform



Damage 8: Boot lid / rear door: Rear door - right side (6 Dellen +Kratzer)
- Dent / paintcoat damage - Repair and paint



Damage 8: Boot lid / rear door: Rear door - right side (6 Dellen +Kratzer)
- Dent / paintcoat damage - Repair and paint



Damage 8: Boot lid / rear door: Rear door - right side (6 Dellen +Kratzer)
- Dent / paintcoat damage - Repair and paint



Damage 8: Boot lid / rear door: Rear door - right side (6 Dellen +Kratzer)
- Dent / paintcoat damage - Repair and paint



Damage 8: Boot lid / rear door: Rear door - right side (6 Dellen +Kratzer)
- Dent / paintcoat damage - Repair and paint



Damage 8: Boot lid / rear door: Rear door - right side (6 Dellen +Kratzer)
- Dent / paintcoat damage - Repair and paint



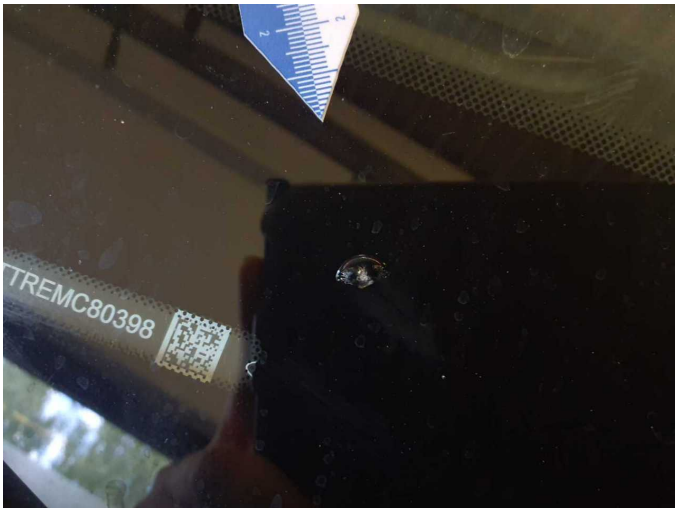
Damage 8: Boot lid / rear door: Rear door - right side (6 Dellen +Kratzer)
- Dent / paintcoat damage - Repair and paint



Damage 9: Vehicle glazing: Windscreen - Broken / torn - repair according to calculation



Damage 9: Vehicle glazing: Windscreen - Broken / torn - repair according to calculation



Damage 9: Vehicle glazing: Windscreen - Broken / torn - repair according to calculation



Damage 9: Vehicle glazing: Windscreen - Broken / torn - repair according to calculation



Damage 9: Vehicle glazing: Windscreen - Broken / torn - repair according to calculation



Wear and tear 1: Interior: Cargo space division - Scratch(es) - No deduction



Wear and tear 1: Interior: Cargo space division - Scratch(es) - No deduction



Wear and tear 1: Interior: Cargo space division - Scratch(es) - No deduction



Wear and tear 1: Interior: Cargo space division - Scratch(es) - No deduction



Wear and tear 1: Interior: Cargo space division - Scratch(es) - No deduction



Wear and tear 1: Interior: Cargo space division - Scratch(es) - No deduction



Wear and tear 4: Door - front right side: Door - Scratch(es) - No deduction



Wear and tear 4: Door - front right side: Door - Scratch(es) - No deduction



Wear and tear 4: Door - front right side: Door - Scratch(es) - No deduction



Missing part 2: Equipment: Vehicle key (1 von 2) - Missing - Replace



Repainting 1: Door - rear right side



Repainting 1: Door - rear right side



Wartungshistorie

(gemäß Auftraggeber Informationen)

Fahrgestellnummer: WF0EXXTTREM80398
Hersteller / Modell: FORD FORD Transit 350 L3H2 Lkw VA Trend

Datum	KM-Stand	Beschreibung
16.02.2024	57.336	Bremsklötze vorne
09.11.2023	52.206	HU + AU
05.04.2023	41.061	Motoröl b. Wartung; Ölfilter ern; Regelwartungsdienst