



FORD Fiesta

Fiesta 1.25

VIN NO WF0CXXGAKCFK47322

Registration Number AKCFK47322



MOT Date



Last Service



Number of Owners



Last Service Mileage



Number of Keys



First Registration Date



Odometer Reading



Country First Registered



Inspection Report Summary

Customer	BCA Online	Report Number	P20250915140053
Inspection Date / Place	2025-09-15 / ARS Altmann AG Wolnzach	Cosmetic Grade	4

Vehicle Summary

Vehicle Condition	Runner	VAT Type	Margin
Fuel Type	Petrol	Road Worthy	Yes
Colour	Blue	Engine Size (cc)	1242
Engine Size	1.2	No of Doors	3
Body Type	Sedan	Drive Train	Front
Seat Colour		No of Seats	5
Seat Covering Name		Seat Covering	Cloth
Charging Cables		NEDC CO2 Rating (q/km)	122
Gearbox Type	Manual		

Vehicle History & Documents

Service Book Available	-	Next Service Mileage	km
Previous Usage		Imported	No
Manufacturer Warrenty			







Equipment

Tinted Glass	Alloys wheels	Heated windscreen	Remote central locking
Central locking	Radio	Airbag Status	Anti-lock braking
Remote adjusting wing mirrors	CD Player	Leather steering wheel	

Equipment Details

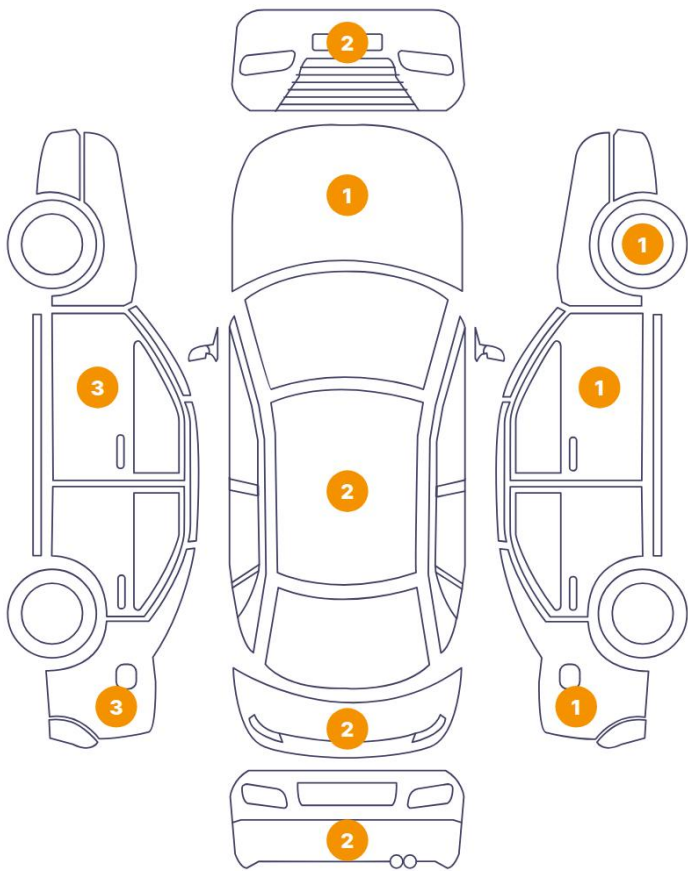
Air Conditioning	Yes	Alloy Wheel Size	15
Extra Wheel / Tyre Set	Winter Tyres - Steel	Seat Heating	Front

Wheels & Tyres

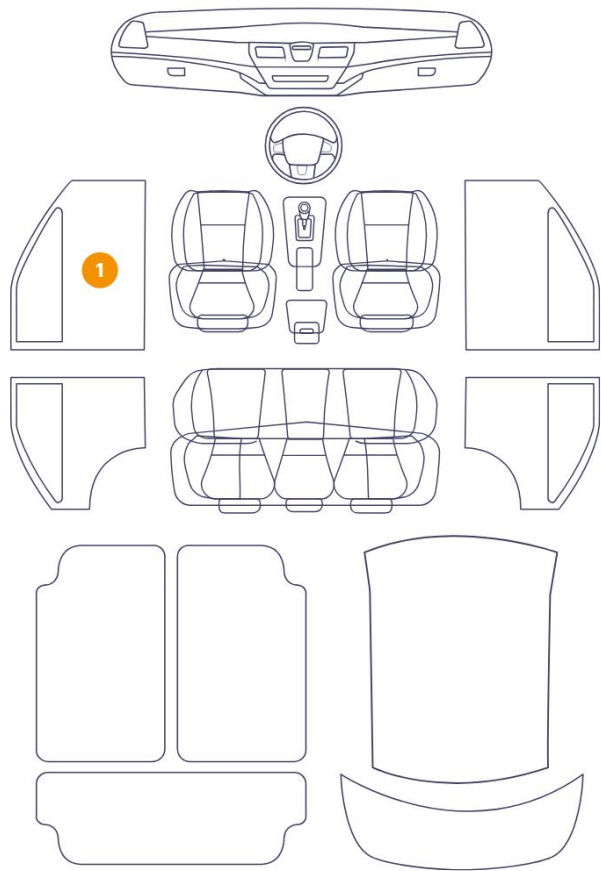
Right Front Tyre Depth	5	Left Front Tyre Depth	5
Right Rear Tyre Depth	5	Left Rear Tyre Depth	5
Extra Wheel - 1 Tyre Depth	5	Extra Wheel - 2 Tyre Depth	5
Extra Wheel - 3 Tyre Depth	4	Extra Wheel - 4 Tyre Depth	4

Cosmetic Damage

18 Schäden

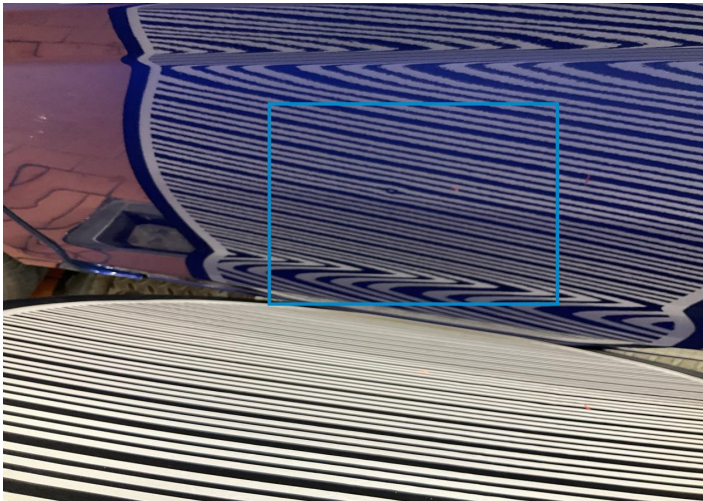


1 Schäden

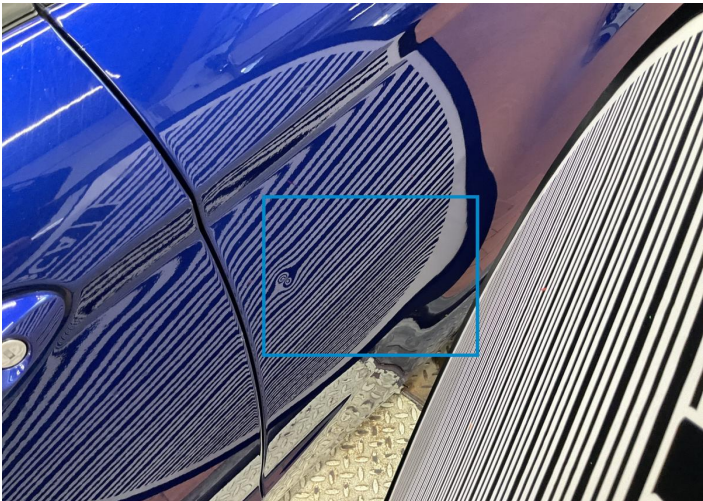


Component		Damage	Comments
1	Door / Front Left	Bodywork / Dent / Dent	
2	Side Panel / Back Left	Bodywork / Dent / Dent	
3	Side Panel / Back Left	Bodywork / Dent / Dent	
4	Tailgate	Bodywork / Dent / Dent	
5	Bumper / Front	Paint / Scratch / Scuff	
6	Hood	Bodywork / Dent / Dent	
7	Mirror Shell / Front Left	Paint / Scratch / Scuff	
8	Door / Front Left	Paint / Scratch / Scuff	
9	Panel Filling / Front Left	Interior / Scratched	
10	Side Panel / Back Left	Paint / Scratch / Scuff	
11	Roof	Paint / Scratch / Scuff	
12	Bumper / Back	Paint / Scratch / Scuff	

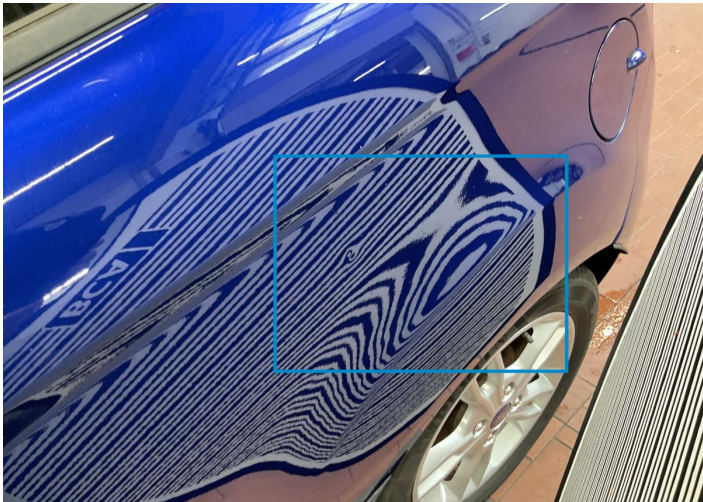
13	Bumper / Back	Paint / Scratch / Scuff
14	Tailgate	Paint / Scratch / Scuff
15	Roof	Paint / Scratch / Scuff
16	Side Panel / Back Right	Paint / Scratch / Scuff
17	Door / Front Right	Paint / Scratch / Scuff
18	Rim / Front Right	Out of Bodywork / Scratch
19	Bumper / Front	Paint / Scratch / Scuff



1. Door / Front Left
Bodywork / Dent / Dent -



2. Side Panel / Back Left
Bodywork / Dent / Dent -



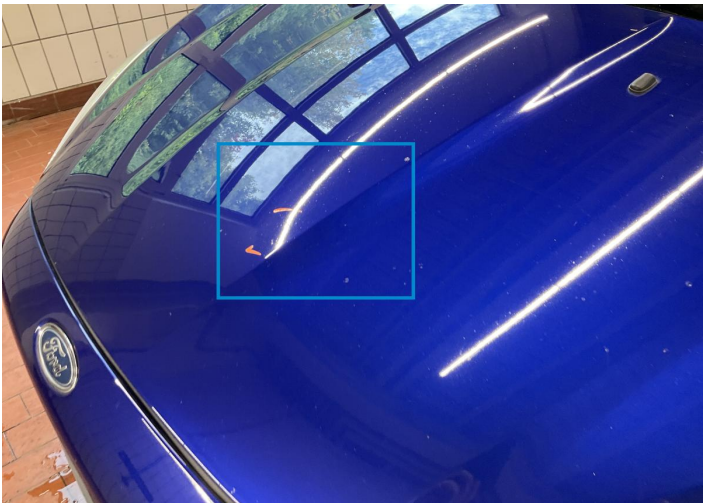
3. Side Panel / Back Left
Bodywork / Dent / Dent -



4. Tailgate
Bodywork / Dent / Dent -



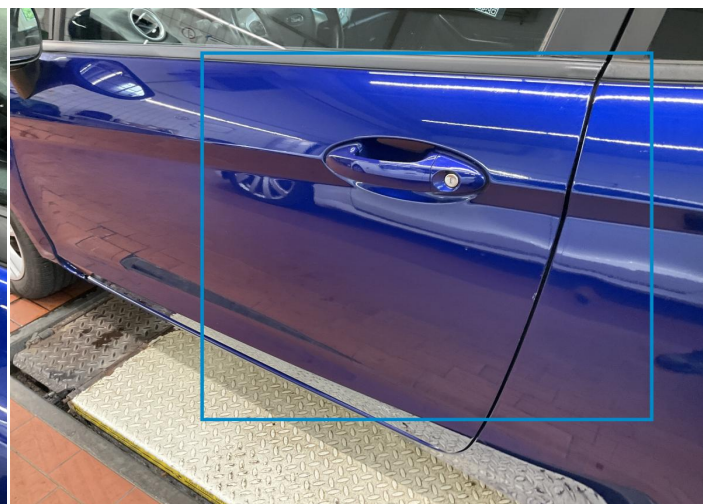
5. Bumper / Front
Paint / Scratch / Scuff -



6. Hood
Bodywork / Dent / Dent -



7. Mirror Shell / Front Left
Paint / Scratch / Scuff -



8. Door / Front Left
Paint / Scratch / Scuff -



9. Panel Filling / Front Left
Interior / Scratched -



10. Side Panel / Back Left
Paint / Scratch / Scuff -



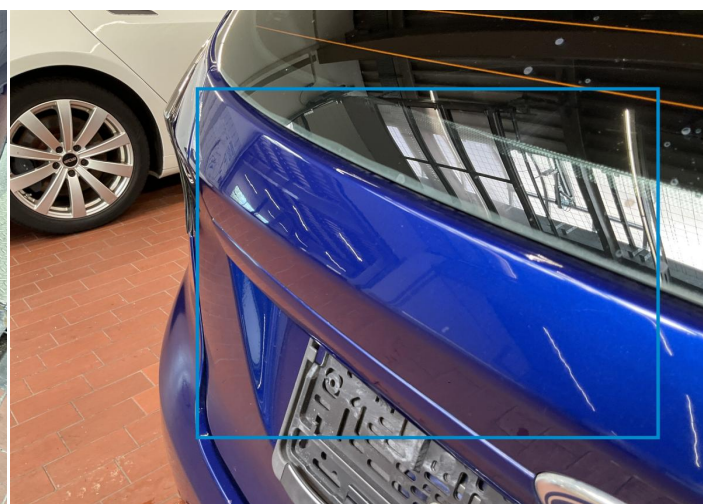
11. Roof
Paint / Scratch / Scuff -



12. Bumper / Back
Paint / Scratch / Scuff -



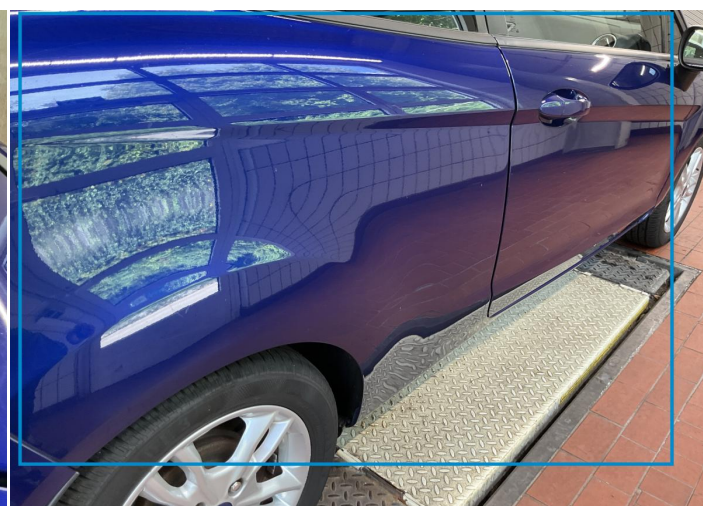
13. Bumper / Back
Paint / Scratch / Scuff -



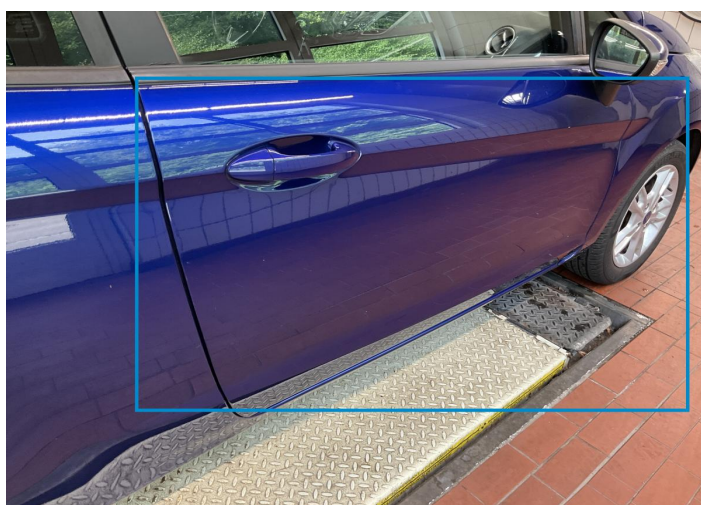
14. Tailgate
Paint / Scratch / Scuff -



15. Roof
Paint / Scratch / Scuff -



16. Side Panel / Back Right
Paint / Scratch / Scuff -



17. Door / Front Right
Paint / Scratch / Scuff -



18. Rim / Front Right
Out of Bodywork / Scratch -



19. Bumper / Front
Paint / Scratch / Scuff -

Mechanical Condition

Control Lights

Display Defect	✓	Service Light	✓
ABS Warning Light	✓	Airbag Warning Light	✓
Oil Pressure Warning Light	✓	Brake Warning Light	✓
Power Steering Warning Light	✓	Alternator / Battery	✓
No Dashboard Lights	✓	Tire Pressure Monitoring System	✓

Equipments Test

Central Locking	✓	Main & Spare Keys Functioning	✓
Electric Windows	✓	Audio Equipment	✓
AC / Heating System	✓		

Engine

Engine Status / EML	✓	Engine Leak Visible	✓
Engine Starts	✓		

Gearbox

Gear Box	✓
----------	---

Levels

Brakes Fluid	NA	Coolant Fluid	✓
--------------	----	---------------	---

Test Drive Inspection

Steering Wheel			
Steering Noise / Anomaly		✓	
Engine			
Engine Noise	✓	The Gears Scratch / Skip / Abnormal Operation	✓
Fume Quantity	✓	Power Loss	✓
Brake			
Brake System Anomaly		✓	
General			
Test Driven Status		✓	
✓ <i>No troubles detected, good condition or correct tests, according to vehicle age and mileage</i>			
! <i>Damages or malfunction detected that requires repairs by the buyer</i>			
NA <i>Not applicable</i>			
= <i>Not tested</i>			

Disclaimer

Please also note the "UserGuide condition report", which shows the scope of the vehicle description.

[User Guide](#)