



FORD Focus

Focus

VIN NO WF0AXXGCDAWA20276

Registration Number CDAWA20276



MOT Date



Last Service



Number of Owners



Last Service Mileage



Number of Keys



First Registration Date



Odometer Reading



Country First Registered



Inspection Report Summary

Customer	BCA Online	Report Number	P20251006083636
Inspection Date / Place	2025-10-06 / BCA Berlin	Cosmetic Grade	5

Vehicle Summary

Vehicle Condition	Runner	VAT Type	Margin
Fuel Type	Petrol	Road Worthy	Unknown
Colour	Blue	Engine Size (cc)	1796
Engine Size	1.8	No of Doors	5
Body Type	Sedan	Drive Train	Front
Seat Colour		No of Seats	5
Seat Covering Name		Seat Covering	Cloth
Charging Cables		WLTP CO2 Emissions	
Gearbox Type	Manual		

Vehicle History & Documents

Service Book Available	Present	Next Service Mileage	km
Previous Usage		Imported	No
Manufacturer Warrenty			







Equipment

USB Socket	Alloys wheels	Auxiliary Socket	Heated windscreen
Remote central locking	Radio	Airbag Status	Anti-lock braking
Front fog lamps	Remote adjusting wing mirrors	Stability control	

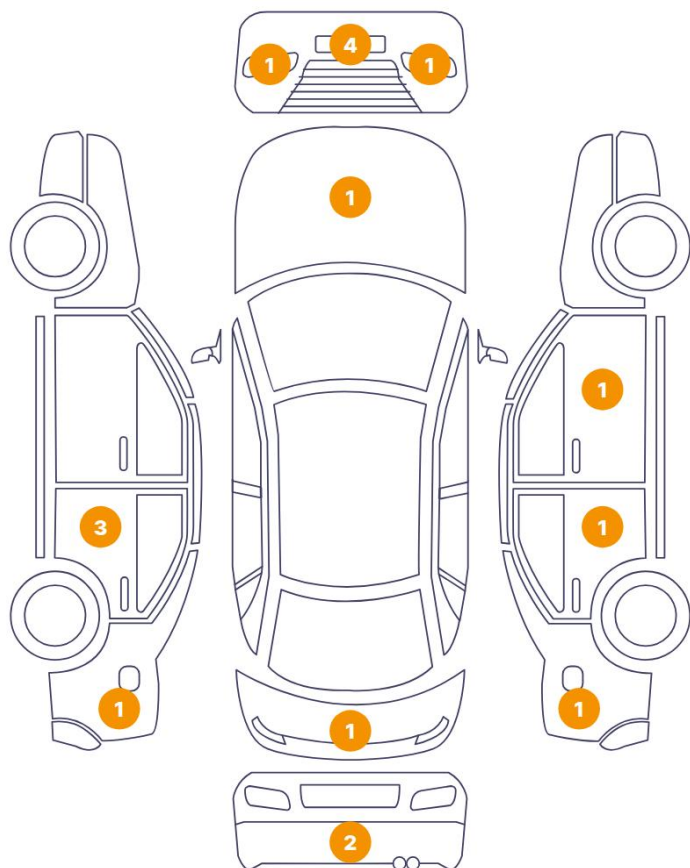
Equipment Details

Air Conditioning	Yes	Alloy Wheel Size	15
------------------	-----	------------------	----

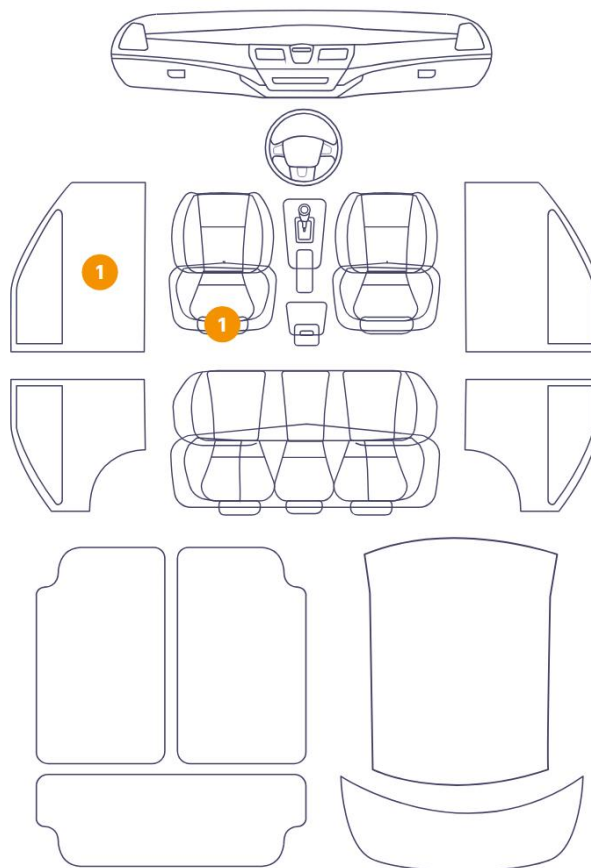
Wheels & Tyres

Right Front Tyre Depth	4	Left Front Tyre Depth	4
Right Rear Tyre Depth	7	Left Rear Tyre Depth	7

17 Schäden



2 Schäden

6/13 - Report Number P20251006083636

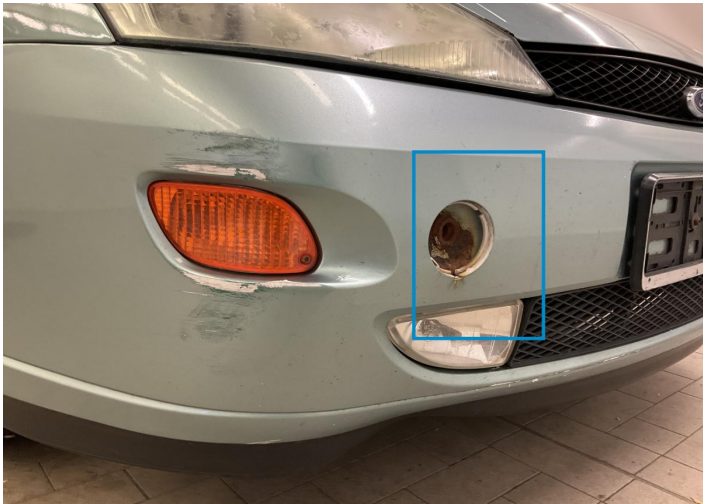
13	Side Panel / Back Right	Bodywork / Dent / Dent
14	Bumper / Back	Paint / Scratch / Scuff
15	Door / Back Right	Paint / Scratch / Scuff
16	Mirror / Front Right	Paint / Scratch / Scuff
17	Hood	Paint / Scratch / Scuff
18	Seat / Front Left	Interior / Holed
19	Panel Filling / Front Left	Interior / Scratched



1. Front Light / Front Right
Glass Break -



2. Bumper / Front
Paint / Scratch / Scuff -



3. Bumper / Front
Paint / Corrosion -



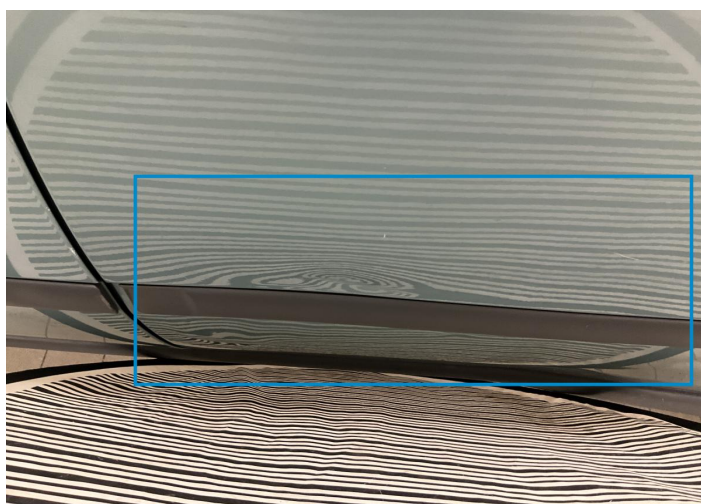
4. Bumper / Front
Paint / Scratch / Scuff -



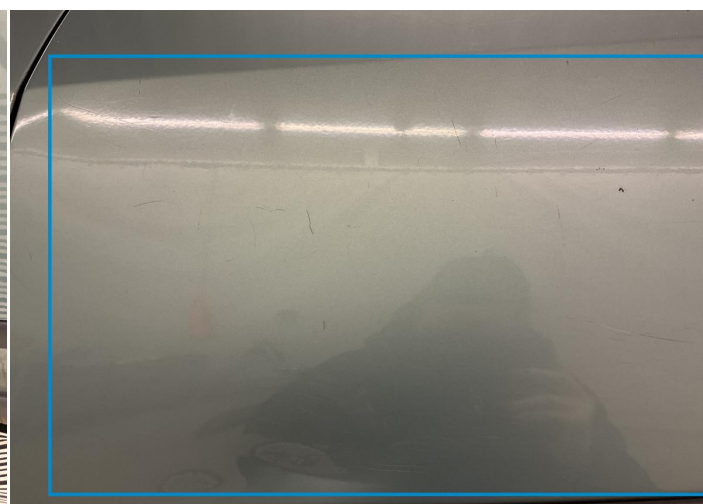
5. Front Light / Front Left
Glass Break -



6. Bumper / Front
Paint / Scratch / Scuff -



7. Door / Back Left
Bodywork / Dent / Dent -



8. Door / Back Left
Paint / Scratch / Scuff -



9. Door / Back Left
Paint / Corrosion -



10. Side Panel / Back Left
Paint / Scratch / Scuff -



11. Bumper / Back
Paint / Scratch / Scuff -



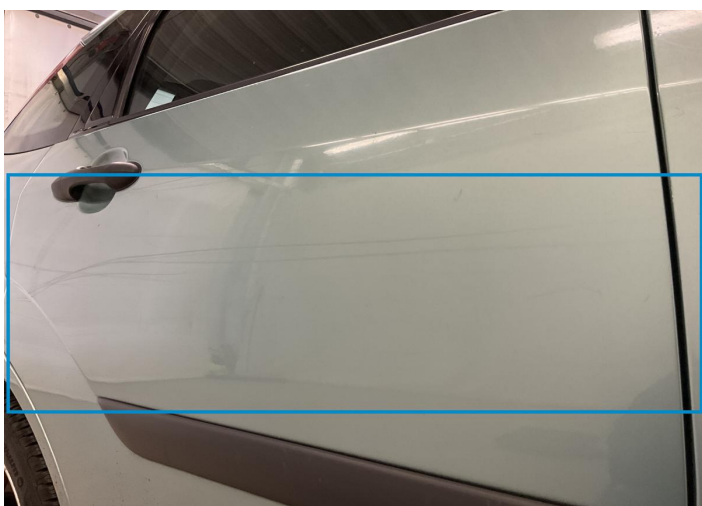
12. Tailgate light
Bodywork / Dent / Dent -



13. Side Panel / Back Right
Bodywork / Dent / Dent -



14. Bumper / Back
Paint / Scratch / Scuff -



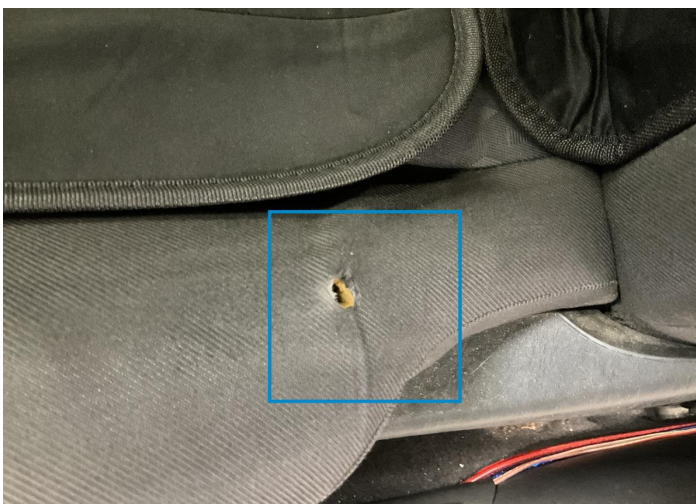
15. Door / Back Right
Paint / Scratch / Scuff -



16. Mirror / Front Right
Paint / Scratch / Scuff -



17. Hood
Paint / Scratch / Scuff -



18. Seat / Front Left
Interior / Holed -



19. Panel Filling / Front Left
Interior / Scratched -

Mechanical Condition

Control Lights

Display Defect	✓	ABS Warning Light	✓
ESP Fault/Traction Control Malfunction Light	✓	Airbag Warning Light	✓
Oil Pressure Warning Light	✓	Brake Warning Light	✓
Power Steering Warning Light	✓	Alternator / Battery	✓
No Dashboard Lights	✓	Service Light	⚠
Tire Pressure Monitoring System	✓		

Engine

Engine Starts	✓	Engine Status / EML	✓
Engine Leak Visible	✓		

Gearbox

Gear Box	✓
----------	---

Equipments Test

Electric Windows	✓	Audio Equipment	✓
AC / Heating System	✓	Other Equipments	✓
Main & Spare Keys Functioning	✓		

Levels

Brakes Fluid	✓	Coolant Fluid	✓
--------------	---	---------------	---


Test Drive Inspection

Steering Wheel

Steering | Noise / Anomaly 

Engine


Engine Noise  The Gears Scratch / Skip / Abnormal Operation 

Power Loss  Fume Quantity 


Brake





Brake System Anomaly 

Clutch

Clutch Functioning 

General

Test Driven Status 

-  No troubles detected, good condition or correct tests, according to vehicle age and mileage
-  Damages or malfunction detected that requires repairs by the buyer
-  Not applicable
-  Not tested

Disclaimer

Please also note the "UserGuide condition report", which shows the scope of the vehicle description. [User Guide](#)