



Expertise

Protocol number: 41580918  
Order No. / Reference: 25084247  
Inspection date: 16 Sept 2025

|                        |   |
|------------------------|---|
| Manufacturer: Ford     | Model: Transit Connect 230 L2 S&S Trend |
| VIN: WF07XXWPG7LD27380 |   |



| Vehicle details                         |                               |
|---|-------------------------------|
| Manufacturer / Type / Model / Equipment |                               |
| Ford Transit Connect 230 L2 S&S Trend   |                               |
| Vehicle Identification number           | WF07XXWPG7LD27380             |
| Mileage (Read)                          | 66,090 km                     |
| First registration                      | 4 Nov 2020                    |
| Number of holders                       | 1                             |
| Power / Engine displacement             | 88 kw / 1,499 ccm             |
| Fuel type / Cylinder                    | Diesel / 4                    |
| Gearbox / Number of gears               | Manual / 6                    |
| Type of drive                           | Front drive                   |
| Type of vehicle                         | Van                           |
| Colour / colour code                    | Polar-Silber Metallic         |
| Doors / Seats                           | 5 / 5                         |
| Upholstery type                         | Cloth                         |
| Colour of upholstery                    | Black                         |
| Re/Import                               | no                            |
| Driving readiness                       | Not roadworthy / not moveable |



Vehicle details

|  |                               |                         |   |
|--|-------------------------------|-------------------------|---|
| Maintenance booklet / proof                  | digital proof / complete      | Next maintenance in     | 61 %  |
| Last maintenance on / at                     | 11/2024 at 58,368 km          |                         |   |
| Key is / should be                           | 3 / 2                         | FZG documents           | ZB#2 (B) was available (copy), ZB#1 (S) was not available |
|  |                               | Letter No.              | FV091651  |
| Previous damage / Accident                   | Detectable                    | Repainting              | None detectable   |
| Inspection conditions                        | sufficient                    | Lifting equipment / pit | No  |
| Test drive                                   | Not performed                 | Engine function test    | Not possible  |
| Driving readiness                            | Not roadworthy / not moveable |                         |   |
| Manufacturer key number/<br>type code number | 8566 / BLK 00248              |                         |   |
| Emission standard                            | EURO6;WLTP;DG;PI/CI; M, N1 I  | Fine dust sticker       |   |
| Permitted total weight                       | 2,270 kg                      | Empty weight            |   |

Tyres

Mounted tyres

| #  | Tyre size      | Type of tyre                               | Manufacturer                | Tread depth |
|----|----------------|--|-----------------------------|-------------|
| 1) | 205/60 R16 96H | Winter tyres on Steel rim with wheel cover | Continental                 | 6mm / 6mm   |
| 2) | 205/60 R16 96H | Winter tyres on Steel rim with wheel cover | unterschiedliche Hersteller | 7mm / 6mm   |

Additional tyres

| #  | Tyre size      | Type of tyre          | Manufacturer | Tread depth |
|----|----------------|-----------------------|--------------|-------------|
| 1) | 205/60 R16 96H | Summer tyres on Steel | Continental  | 5mm / 5mm   |
| 2) | 205/60 R16 96H | Summer tyres on Steel | Continental  | 6mm / 6mm   |

Replacement

| Typ | Tyre size | Type of tyre            | Manufacturer | Tread depth |
|-----|-----------|-------------------------|--------------|-------------|
|     | Tirefit   | Expiration date 06/2024 |              |             |

Legend: Tread depth information for tires on the left is in the first place, for tires on the right is in the second place on the axle in the direction of travel



## Equipment

### Standard equipment

- |  |  |
|--|--|
| <ul style="list-style-type: none"> <li>• ABS with EBD</li> <li>• Exterior mirrors, electrically adjustable and heated</li> <li>• Hill start assist</li> <li>• Flooring: Carpet (1st and 2nd row)</li> <li>• On-board computer including outside temperature display</li> <li>• Third brake light</li> <li>• Window, rear, right and left, fixed (at the height of the 3rd row of seats)</li> <li>• Front window lifter, electric</li> <li>• Ford ECO mode and gear shift recommendation display</li> <li>• Transmission: 6-speed transmission</li> <li>• Rear window wiper system</li> <li>• Interior lighting at the front and in the passenger/cargo area with delay circuit</li> <li>• Steering column, adjustable in height and reach</li> <li>• Fog light</li> <li>• Package: -25° starter package</li> <li>• Package: Passenger car version package with rear swing door</li> <li>• Sliding door, right and left</li> <li>• Side protection strips, plastic</li> <li>• Safety Brake Assist</li> <li>• Safety door lock, automatic (45 sec.)</li> <li>• Front spoiler lip</li> <li>• Concealed storage compartment on dashboard with 12-volt connection</li> <li>• Power socket: 12-volt connection in storage compartment on dashboard (driver's side)</li> <li>• Daytime running light</li> <li>• Immobiliser</li> <li>• Central locking with remote control</li> </ul> | <ul style="list-style-type: none"> <li>• Driver's side airbag</li> <li>• Battery (80 Ah)</li> <li>• Floor covering: front floor mats, carpet floor mats (2-piece set)</li> <li>• Diesel particulate filter (DPF)</li> <li>• Electronic Safety and Stability Program (ESP)</li> <li>• Rear window lifters, right and left electric (at the height of the 2nd row of seats)</li> <li>• Ford Easy Fuel</li> <li>• Luggage compartment floor mat, rubberized</li> <li>• Glove compartment with lid</li> <li>• Heating for rear window(s)</li> <li>• Isofix mount</li> <li>• Front air conditioning including manual recirculation</li> <li>• Center console, front</li> <li>• Emergency brake light</li> <li>• Package: Economy</li> <li>• Wheels: Tire repair kit</li> <li>• Wheels: Steel wheels 6.5 J x 16 with 205/60 R 16 tires and hubcaps</li> <li>• Power steering, electro-mechanical</li> <li>• Height-adjustable front seat belts</li> <li>• Seats for passenger compartment: 2nd row</li> <li>• Dust and pollen filter</li> <li>• Power socket: 12-volt connection on the front and rear center console</li> <li>• Front bumper and rear bumper end caps painted in body color</li> <li>• Lashing eyes</li> <li>• Heat-insulating glazing, slightly tinted</li> <li>• Auxiliary heater, electric (PTC), front</li> </ul> |
|--|--|

### Extra equipment

- |  |  |
|--|--|
| <ul style="list-style-type: none"> <li>• Cruise control (with adjustable speed limiter including multifunction leather steering wheel)</li> <li>• Safety net for separating the passenger and luggage compartments (including attachment points (later retrofitting not possible))</li> <li>• Seats: Seat Package 25 (dark "Route" fabric - driver's seat, 3-way manually adjustable (forward/backward, height, backrest) - single passenger seat, 2-way manually adjustable (forward/backward, backrest) and foldable - side airbags for driver and front passenger - height-adjustable headrests - manual lumbar support (driver's seat) - map pocket for driver's seat - driver/passenger seat belt warning system - seat heating for driver's seat and single passenger seat)</li> </ul> | <ul style="list-style-type: none"> <li>• Anti-theft alarm system with interior monitoring (including double locking and 2 remote control keys)</li> <li>• Bi-xenon headlights with LED daytime running lights</li> <li>• Headlight assistant with day/night sensor (including headlight dipped beam with switch-off delay, windshield wipers with rain sensor, windshield and windshield washer nozzles, heated)</li> <li>• Outdoor pool, electric adjustable heating with dead end</li> <li>• Paint finish: metallic</li> <li>• Parking pilot system front and rear</li> <li>• Radio: Ford Audio System 9</li> <li>• Windows: Side windows from 2nd row and rear window, dark tinted</li> </ul> |
|--|--|



## Brief expert findings

|                      |   |
|----------------------|---|
| Documents submitted  | At the time of the inspection, the registration certificate Part 2 (letter) was available, but the registration certificate Part 1 (certificate) was not. (Copy)  |
| VIN comparison       | The vehicle identification number (VIN) was read from the vehicle and its conformity with the submitted documents was verified during the inspection by the undersigned.  |
| Inspection           | The inspection conditions were sufficient for the assessment of the vehicle.<br>No lifting equipment or pit was available to inspect the vehicle. Therefore, inspection of the vehicle's underside was only possible to a limited extent. |
| Test drive           | No test drive/maneuvering was carried out during the inspection of the vehicle.   |
| Engine function test | An engine test run could not be performed.<br>This is due to the following reason:<br>Motorschaden  |
| Driving readiness    | At the time of inspection, the vehicle was not drivable, but could only be towed.   |

## Value reducing factors

| No. | Component group      | Description                                    |
|-----|----------------------|--|
| 1   | Equipment            | Tirefit filler - Due - Replace                 |
| 2   | 2nd wheel set        | 1 tyre - Broken / torn - Replace               |
| 3   | Boot lid / rear door | Boot lid - dent(s) - Smooth repair work        |
| 4   | Interior             | Interior - Soiled - Clean                      |
| 5   | Body                 | Body - Glued / labelled - De-glue / neutralise |
| 6   | Front bumper         | Front bumper - Damaged - Replace               |
| 7   | Engine               | Engine - Defective - Replace                   |

## Accident damages

| No. | Accident         |
|-----|------------------|
| 1   | Side - left      |
| 2   | Rear, Side right |

## Order/Scope of order

The order was placed to prepare a sales report for the vehicle described. This includes the following:

- Description of core relevant information about the vehicle
- Documentation of equipment features  
(*Delivery by third-party service providers*)
- Documentation of damage, defects, missing parts
- Documentation of previous damage, unrepaired previous damage, repainting
- a brief visual or functional inspection of the equipment details if possible.  
(*Functional tests of driver assistance systems are not included in the scope of services!*)
- a photo documentation of the vehicle





## Basis for the order

This product is based on the Alphabet Fuhrpark GmbH guidelines for vehicle returns and valuations. The expert makes the explicit findings in each individual case objectively within the framework of the specified standards based on his or her own expertise.

The vehicle inspection takes place in a disassembled state.

Damage or defects that can only be detected during disassembly/diagnosis work or through advanced knowledge remain within the scope of the prognosis risk. An extended risk exists for concealed defects caused by fraudulent deception and not identifiable by the expert.

Damage or defects resulting from normal use or wear and tear of the vehicle will be accepted according to the applicable standard.

There was no explicit identification or monetary consideration of the expected features within the product.

Features which in their nature and severity slightly exceed normal use but do not constitute unacceptable damage will be documented and identified under signs of use if necessary.

Damage or defects which, according to the underlying standard, can no longer be attributed to normal use or wear and tear are listed in the product under "Depreciating Factors".

Depending on the product specification, a monetary ID can be provided. If this takes place, the costs can be 100% d or pro rata depending on the vehicle's age and mileage.

## Previous damages

Non-repaired previous damages were found at the vehicle. The necessary repair costs are listed in the expert report or if necessary, are listed in detail in a separately enclosed repair cost calculation.

## Comments

- Für den montierten Radsatz wurde kein Nachweis erbracht.



Figure 1: Diagonal front (left)



Figure 2: Diagonal front (right)



Figure 3: Diagonal rear (left)



Figure 4: Diagonal rear (right)



Figure 5: Interior - front



Figure 6: Interior - rear





Figure 7: Instrument cluster



Figure 8: Instrument panel



Figure 9: Interior 360° view



Figure 10: Cargo area



Figure 11: VIN



Figure 12: Mounted tyres



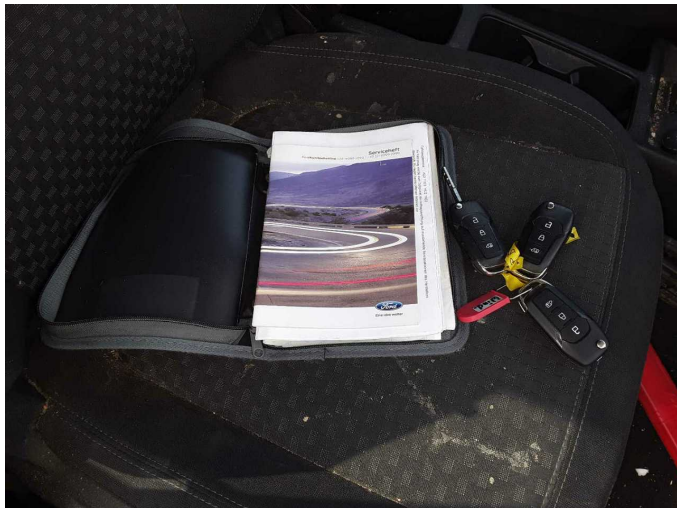


Figure 13: Documents



Figure 14: Documents



Figure 15: Documents



Figure 16: Additional tyres

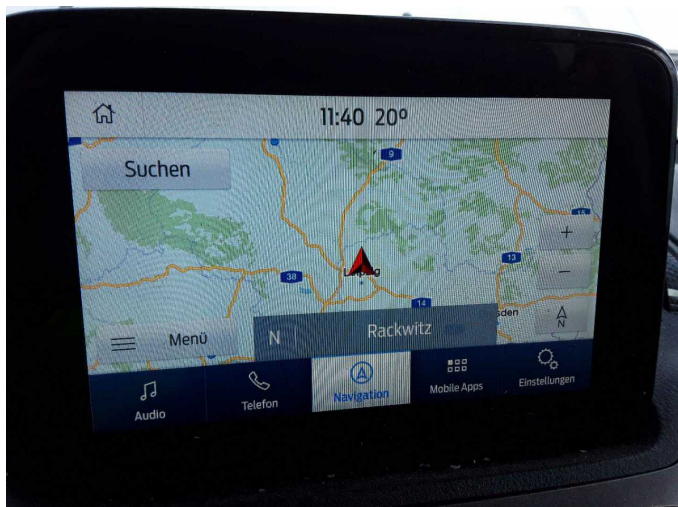


Figure 17: Navigation



Figure 18: Misc.





Figure 19: Misc.

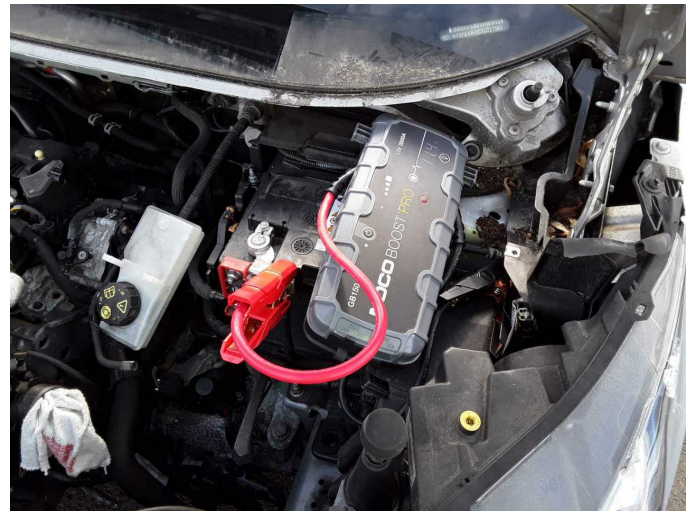


Figure 20: Misc.



Figure 21: Misc.



Figure 22: Misc.



Figure 23: Misc.



Figure 24: Misc.





**Figure 25:** Misc.



**Damage 1:** Equipment: Tirefit filler - Due - Replace



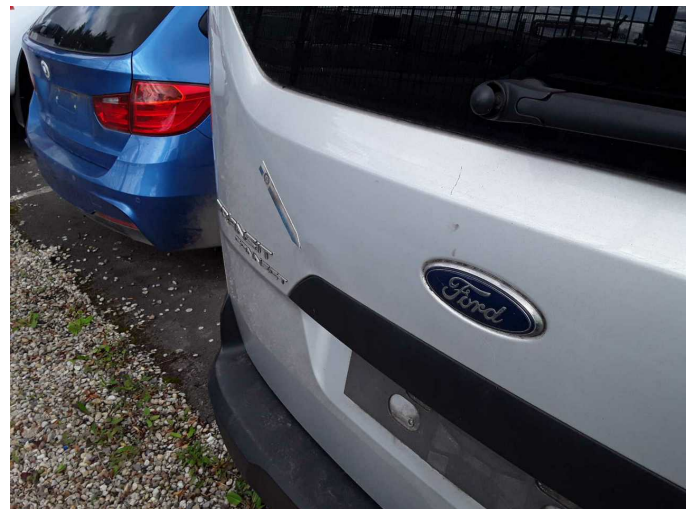
**Damage 2:** 2nd wheel set: 1 tyre - Broken / torn - Replace



**Damage 2:** 2nd wheel set: 1 tyre - Broken / torn - Replace



**Damage 2:** 2nd wheel set: 1 tyre - Broken / torn - Replace



**Damage 3:** Boot lid / rear door: Boot lid - dent(s) - Smooth repair work

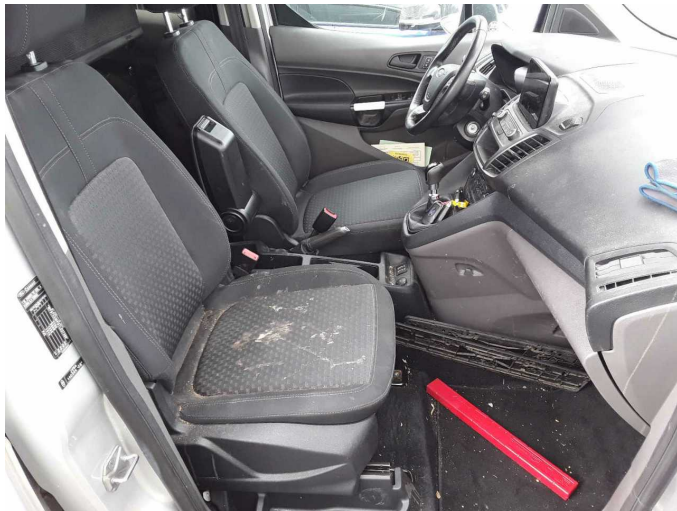




**Damage 3:** Boot lid / rear door: Boot lid - dent(s) - Smooth repair work



**Damage 3:** Boot lid / rear door: Boot lid - dent(s) - Smooth repair work



**Damage 4:** Interior: Interior - Soiled - Clean



**Damage 4:** Interior: Interior - Soiled - Clean



**Damage 4:** Interior: Interior - Soiled - Clean



**Damage 5:** Body: Body - Glued / labelled - De-glue / neutralise





**Damage 5:** Body: Body - Glued / labelled - De-glue / neutralise



**Damage 5:** Body: Body - Glued / labelled - De-glue / neutralise



**Damage 6:** Front bumper: Front bumper - Damaged - Replace



**Damage 6:** Front bumper: Front bumper - Damaged - Replace



**Damage 6:** Front bumper: Front bumper - Damaged - Replace



**Damage 6:** Front bumper: Front bumper - Damaged - Replace

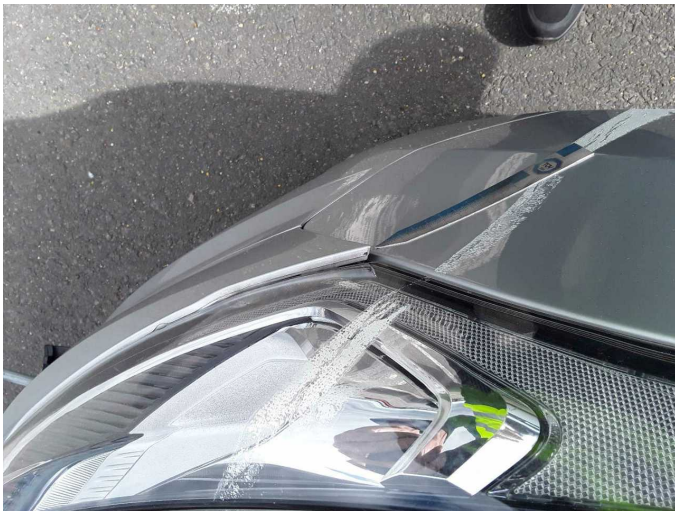




**Damage 6:** Front bumper: Front bumper - Damaged - Replace



**Damage 6:** Front bumper: Front bumper - Damaged - Replace



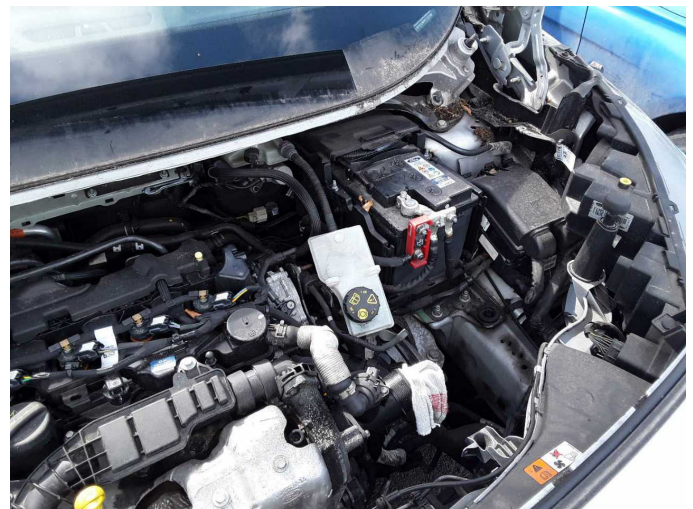
**Damage 6:** Front bumper: Front bumper - Damaged - Replace



**Damage 6:** Front bumper: Front bumper - Damaged - Replace

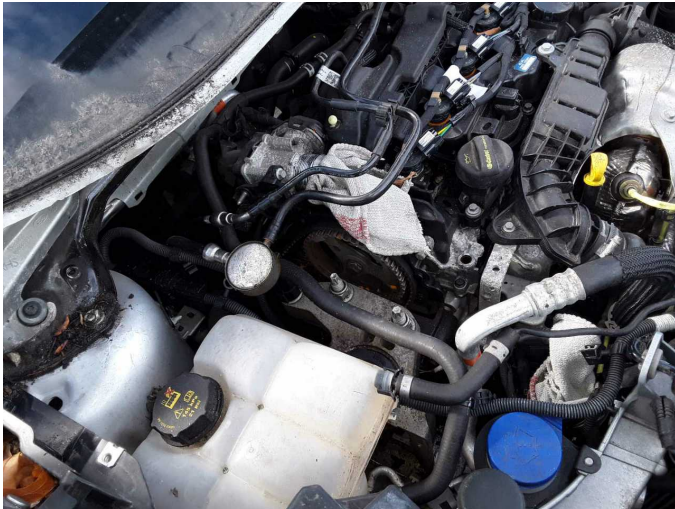


**Damage 7:** Engine: Engine - Defective - Replace



**Damage 7:** Engine: Engine - Defective - Replace

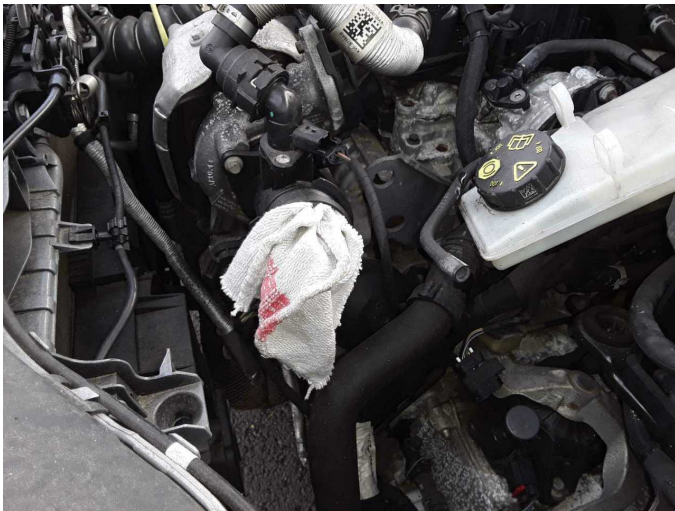




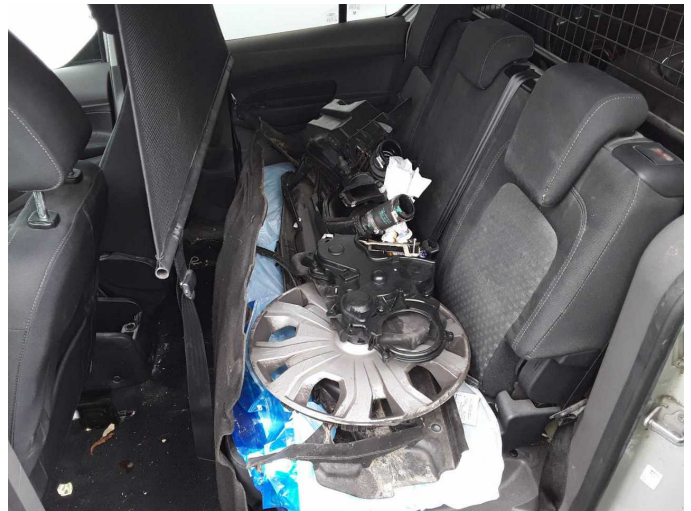
**Damage 7:** Engine: Engine - Defective - Replace



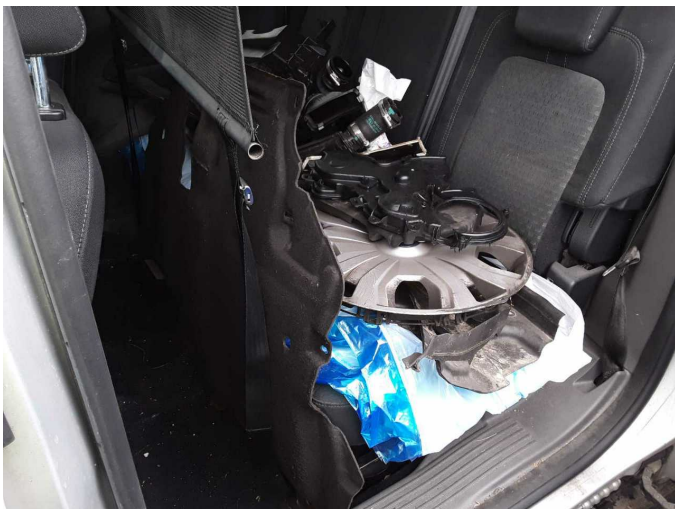
**Damage 7:** Engine: Engine - Defective - Replace



**Damage 7:** Engine: Engine - Defective - Replace



**Damage 7:** Engine: Engine - Defective - Replace



**Damage 7:** Engine: Engine - Defective - Replace



**Accident 1:** Side - left





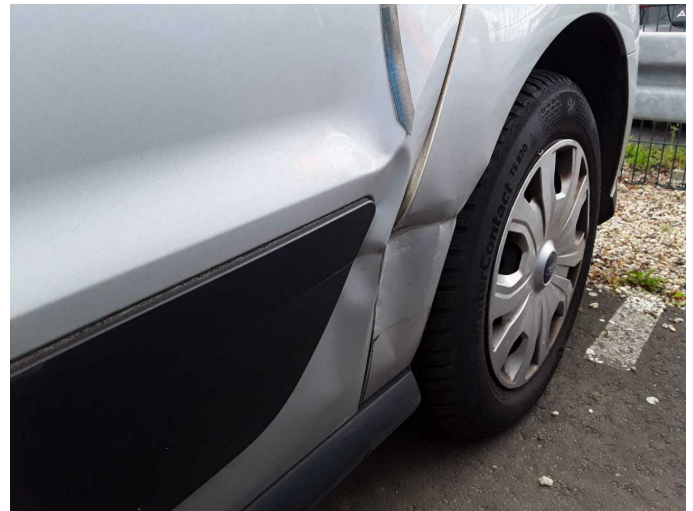
**Accident 1: Side - left**



**Accident 1: Side - left**



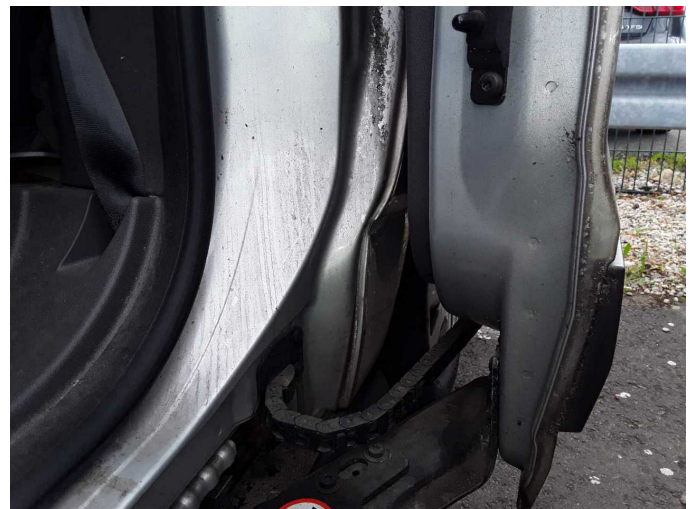
**Accident 1: Side - left**



**Accident 1: Side - left**



**Accident 1: Side - left**



**Accident 1: Side - left**





**Accident 1: Side - left**



**Accident 1: Side - left**



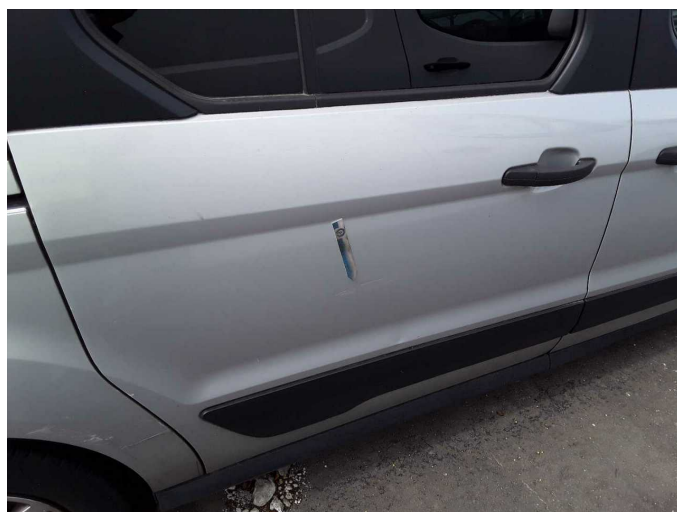
**Accident 1: Side - left**



**Accident 2: Rear, Side right**



**Accident 2: Rear, Side right**



**Accident 2: Rear, Side right**





**Accident 2:** Rear, Side right



**Accident 2:** Rear, Side right



**Accident 2:** Rear, Side right



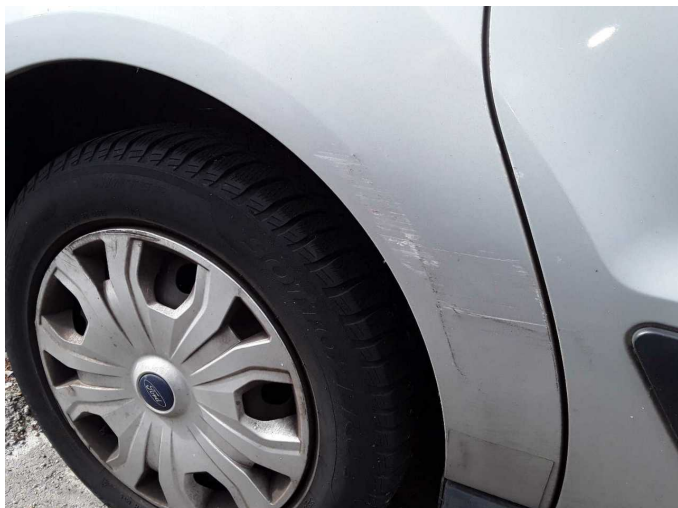
**Accident 2:** Rear, Side right



**Accident 2:** Rear, Side right



**Accident 2:** Rear, Side right



**Accident 2: Rear, Side right**



**Accident 2: Rear, Side right**





# Wartungshistorie

(gemäß Auftraggeber Informationen)

Fahrgestellnummer: WF07XXWPG7LD27380  
Hersteller / Modell: FORD FORD Transit Connect 230 L2 S&S Trend

| Datum      | KM-Stand | Beschreibung   |
|------------|----------|--|
| 18.07.2025 | 66.090   | Systemtest/Eigendiagnose; Zahnriemen/Steuerkett ern  |
| 05.11.2024 | 58.368   | Bremsflüssigkeit; Bremsflüssigkeit ern; Bremsklötze vorne; Bremsscheiben + Klötze v; Bremsscheiben vorne; Kraftstofffilter ern; Luftfiltereinsatz ern; Motoröl b. Wartung; Ölfilter ern; Regelwartungsdienst; Reparatur Sonstiges; Wartung Sonstiges   |
| 20.12.2023 | 48.479   | AU; Dieselpartikelfilter ern; HU + AU; Ladeluftschlauch ern; Regelwartungsdienst; Reparatur Sonstiges; Systemtest/Eigendiagnose  |
| 07.07.2023 | 44.959   | Bremsflüssigkeit; Bremsflüssigkeit ern; Bremsklötze hinten; Bremsklötze vorne; Bremsscheiben + Klötze h; Bremsscheiben + Klötze v; Bremsscheiben hinten; Bremsscheiben vorne; Motoröl b. Wartung; Ölfilter ern; Regelwartungsdienst; Wartung Sonstiges |
| 27.04.2022 | 23.407   | Motoröl b. Wartung; Ölfilter ern; Ölwechsel; Wartung Sonstiges   |