



FORD Transit Connect

Transit Connect 220 L1 S&S

VIN NO WF06XXWPG6LK76575

Registration Number PG6LK76575



MOT Date



Last Service



Number of Owners



Last Service Mileage



Number of Keys



First Registration Date



2020-10-02

Odometer Reading



101849 km

Country First Registered



Germany

Inspection Report Summary

Customer	BCA Online	Report Number	P20250916113607
Inspection Date / Place	2025-09-16 / BCA Berlin	Cosmetic Grade	3

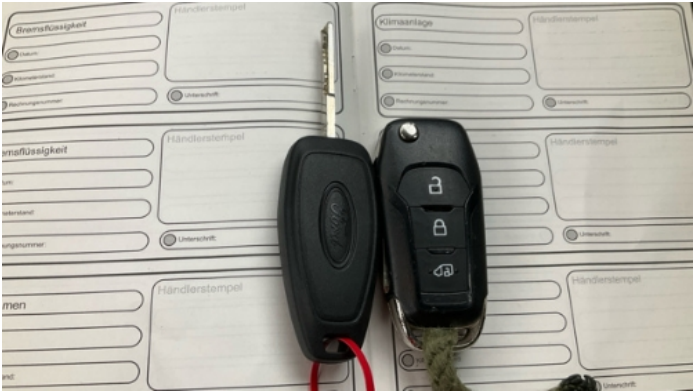
Vehicle Summary

Vehicle Condition	Runner	VAT Type	Qualifying
Fuel Type	Diesel	Road Worthy	Unknown
Colour	Blue	Engine Size (cc)	1498
Engine Size	1.5	No of Doors	5
Body Type	Stationwagon / Estate	Drive Train	Front
Seat Colour		No of Seats	5
Seat Covering Name		Seat Covering	Cloth
Charging Cables		NEDC CO2 Rating (q/km)	114
Gearbox Type	Manual		

Vehicle History & Documents

Service Book Available	Present Unrecorded	Next Service Mileage	km
Previous Usage		Imported	No
Manufacturer Warrenty			







Equipment

USB Socket	Anti-lock braking	Cruise control	Front fog lamps
Heated windscreen	Remote central locking	Electrically folding wing mirrors	Radio
Airbag Status	Bluetooth telephone interface	Diesel particulate filter	Front parking sensors
Remote adjusting wing mirrors	Stability control	Leather steering wheel	Rear parking sensors

Equipment Details

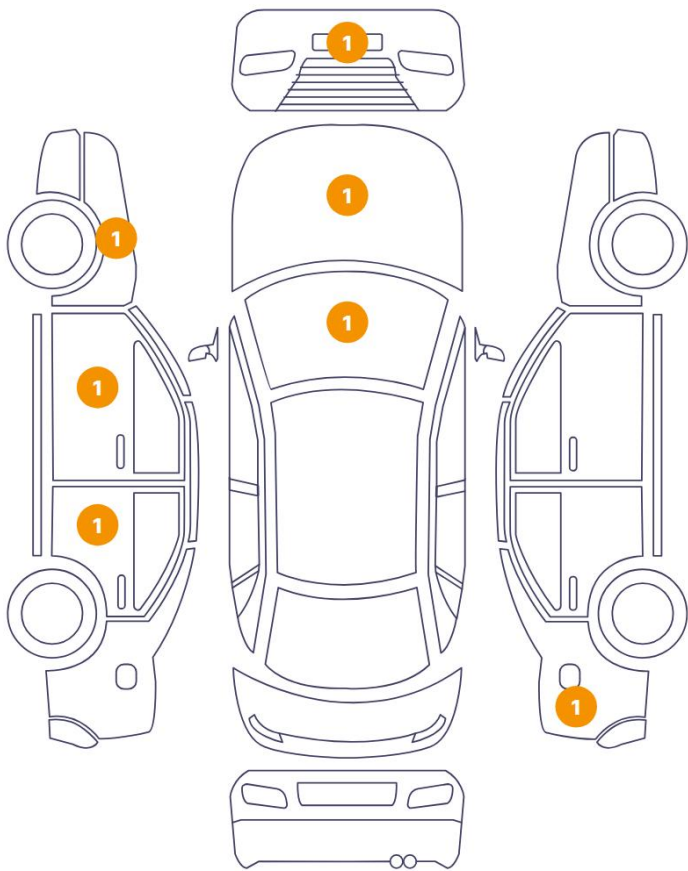
Air Conditioning	Yes	Seat Heating	Front
------------------	-----	--------------	-------

Wheels & Tyres

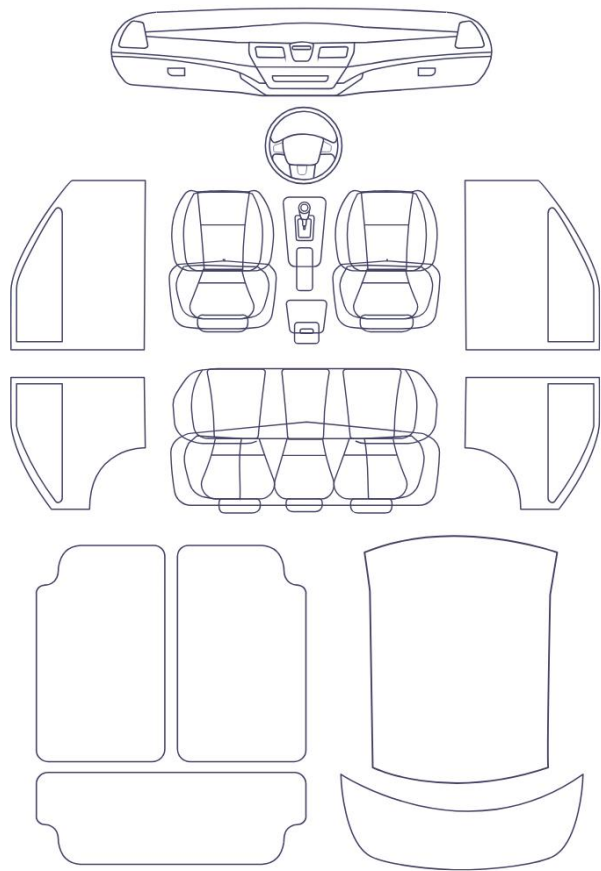
Right Front Tyre Depth	5	Left Front Tyre Depth	5
Right Rear Tyre Depth	5	Left Rear Tyre Depth	5

Cosmetic Damage

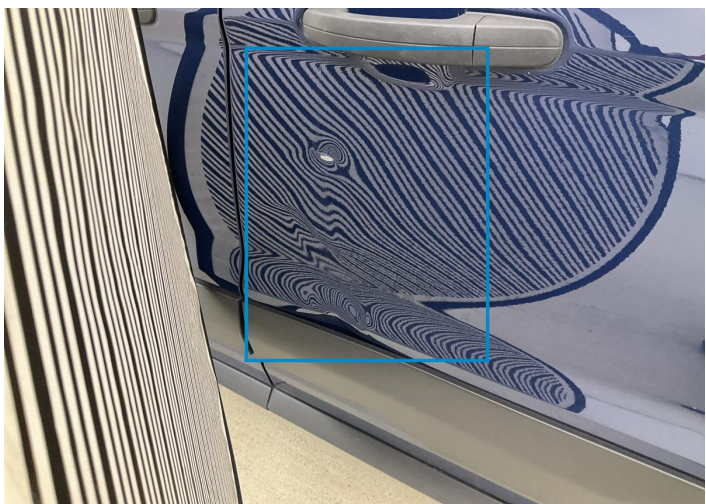
7 Schäden



0 Schäden



Component	Damage	Comments
1 Door / Back Left	Bodywork / Dent / Dent	
2 Door / Front Left	Paint / Scratch / Scuff	
3 Fender / Front Left	Paint / Scratch / Scuff	
4 Bumper / Front	Paint / Scratch / Scuff	
5 Hood	Paint / Stone Chip	
6 Windshield / Front	Paint / Chipping	
7 Side Panel / Back Right	Bodywork / Dent / Dent	



1. Door / Back Left
Bodywork / Dent / Dent -



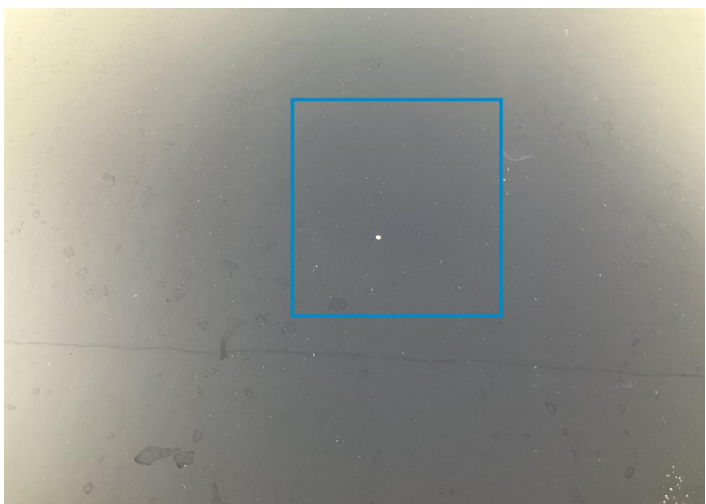
2. Door / Front Left
Paint / Scratch / Scuff -



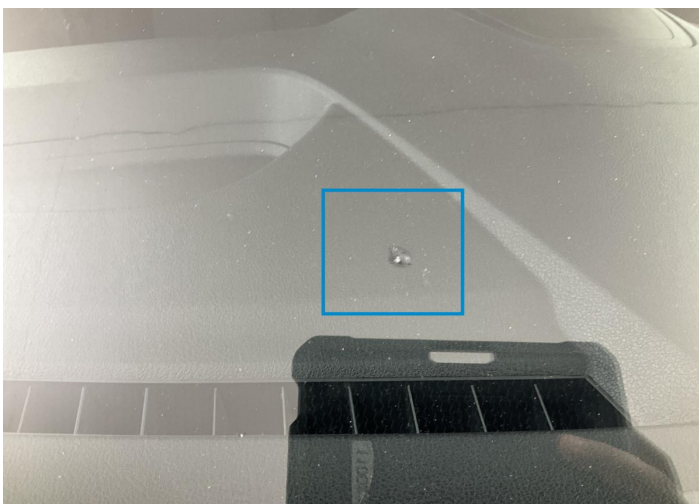
3. Fender / Front Left
Paint / Scratch / Scuff -



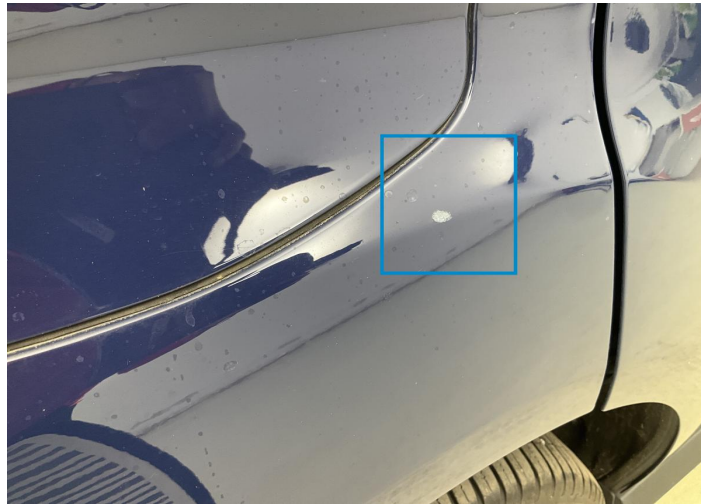
4. Bumper / Front
Paint / Scratch / Scuff -



5. Hood
Paint / Stone Chip -



6. Windshier / Front
Paint / Chipping -



7. Side Panel / Back Right
Bodywork / Dent / Dent -

Mechanical Condition

Control Lights

Display Defect	✓	ABS Warning Light	✓
ESP Fault/Traction Control Malfunction Light	✓	Diesel Particulate Filter Light	✓
Airbag Warning Light	✓	Oil Pressure Warning Light	✓
Brake Warning Light	✓	Power Steering Warning Light	✓
Alternator / Battery	✓	No Dashboard Lights	✓
Tire Pressure Monitoring System	✓	Service Light	✓

Equipments Test

Other Equipments	✓	Main & Spare Keys Functioning	✓
Electric Windows	✓	Audio Equipment	✓
Parking Sensors / Cameras Functioning	✓	AC / Heating System	✓

Engine

Engine Starts	✓	Engine Status / EML	✓
Engine Leak Visible	✓		

Gearbox

Gear Box	✓
----------	---

Levels

Brakes Fluid	✓	Coolant Fluid	✓
--------------	---	---------------	---

Test Drive Inspection

Steering Wheel			
Steering Noise / Anomaly		✔	
Engine			
Engine Noise	✔	The Gears Scratch / Skip / Abnormal Operation	✔
Fume Quantity	✔	Power Loss	✔
Clutch			
Clutch Functioning		✔	
Brake			
Brake System Anomaly		✔	
General			
Test Driven Status		✔	
✔ No troubles detected, good condition or correct tests, according to vehicle age and mileage			
! Damages or malfunction detected that requires repairs by the buyer			
NA Not applicable			
= Not tested			

Disclaimer

Please also note the "UserGuide condition report", which shows the scope of the vehicle description.

[User Guide](#)