



FORD Focus

Focus Turnier 1.0 EcoBoost Start-Stopp-System

VIN NO WF06XXGCC6HC63188

Registration Number CC6HC63188



MOT Date



Last Service

2025-04-15

Number of Owners



Last Service Mileage

61523

Number of Keys



First Registration Date

2017-10-18

Odometer Reading



67492 km

Country First Registered



Inspection Report Summary

Customer	BCA Online	Report Number	P20250916091024
Inspection Date / Place	2025-09-16 / ARS Altmann AG Wolnzach	Cosmetic Grade	4

Vehicle Summary

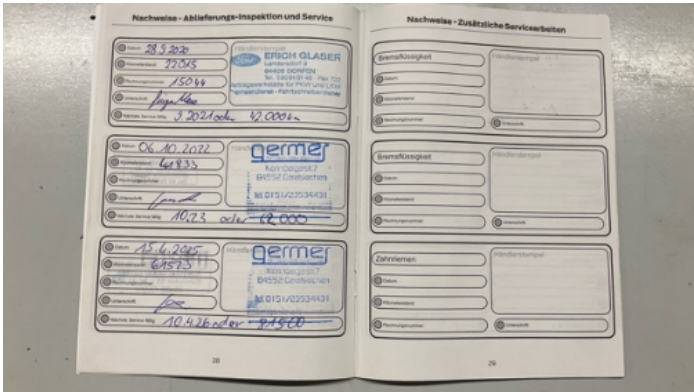
Vehicle Condition	Runner	VAT Type	Margin
Fuel Type	Petrol	Road Worthy	Yes
Colour	Grey	Engine Size (cc)	999
Engine Size	1.0	No of Doors	5
Body Type	Stationwagon / Estate	Drive Train	Front
Seat Colour		No of Seats	5
Seat Covering Name		Seat Covering	Cloth
Charging Cables		NEDC CO2 Rating (q/km)	110
Gearbox Type	Manual		

Vehicle History & Documents

Service Book Available	Present	Next Service Mileage	km
Previous Usage		Imported	No
Manufacturer Warrenty			







Equipment

Airbag Status	Cruise control	Remote central locking	Satellite navigation
CD Player	Leather steering wheel	Rear parking sensors	Anti-lock braking
Remote adjusting wing mirrors	Roof rails	Stability control	Central locking
Radio			

Equipment Details

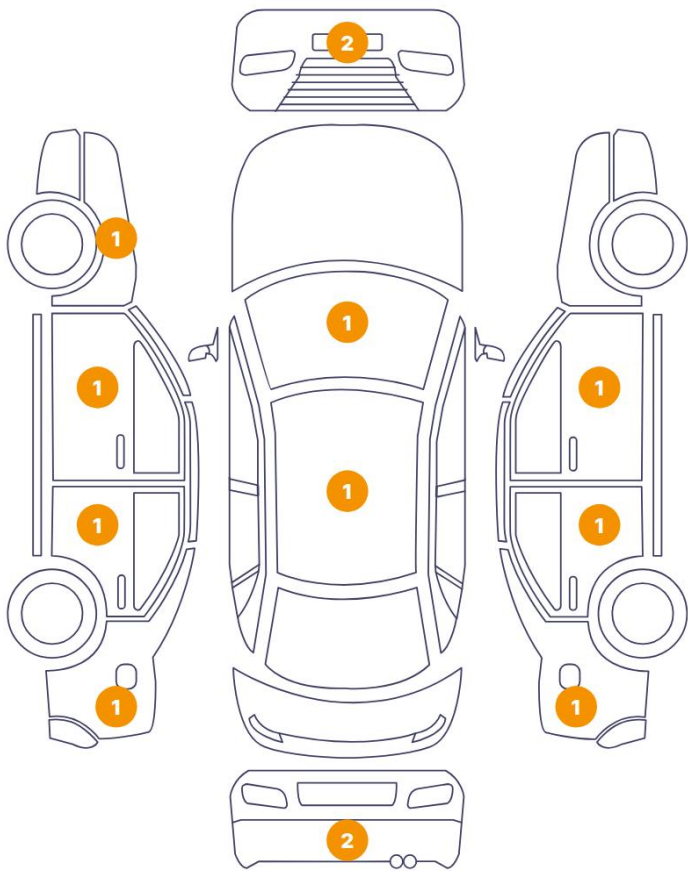
Air Conditioning	Yes	Seat Heating	Front
------------------	-----	--------------	-------

Wheels & Tyres

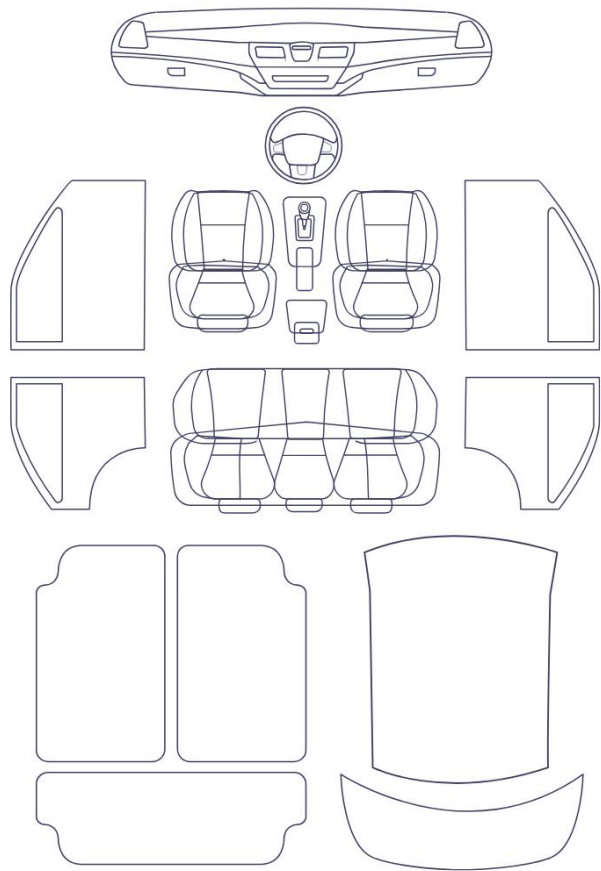
Right Front Tyre Depth	4	Left Front Tyre Depth	4
Right Rear Tyre Depth	4	Left Rear Tyre Depth	4

Cosmetic Damage

13 Schäden



0 Schäden



Component		Damage	Comments
1	Bumper / Front	Paint / Scratch / Scuff	
2	Wing Repeater / Left	Paint / Scratch / Scuff	
3	Windshield / Front	Bodywork / Dent / Deformation	
4	Door / Front Left	Paint / Scratch / Scuff	
5	Door / Back Left	Paint / Scratch / Scuff	
6	Side Panel / Back Left	Paint / Scratch / Scuff	
7	Bumper / Back	Paint / Scratch / Scuff	
8	Bumper / Back	Paint / Scratch / Scuff	
9	Side Panel / Back Right	Paint / Scratch / Scuff	
10	Door / Back Right	Paint / Scratch / Scuff	
11	Door / Front Right	Paint / Scratch / Scuff	
12	Antenna Rod	Out of Bodywork / Breakage	

13 Bumper / Front

Paint / Stone Chip



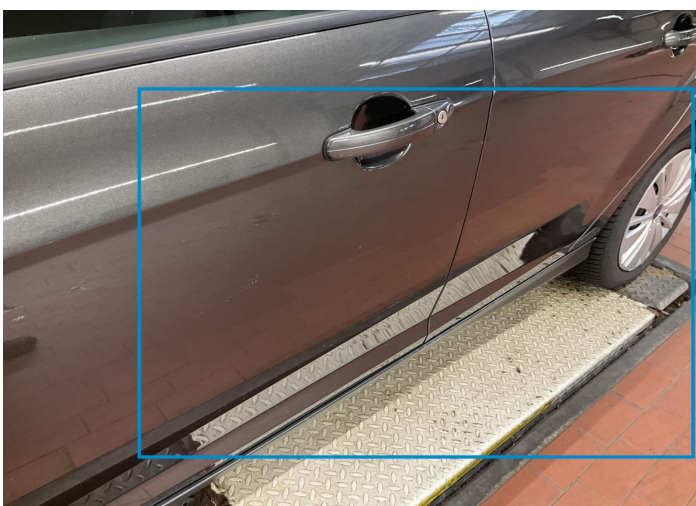
1. Bumper / Front
Paint / Scratch / Scuff -



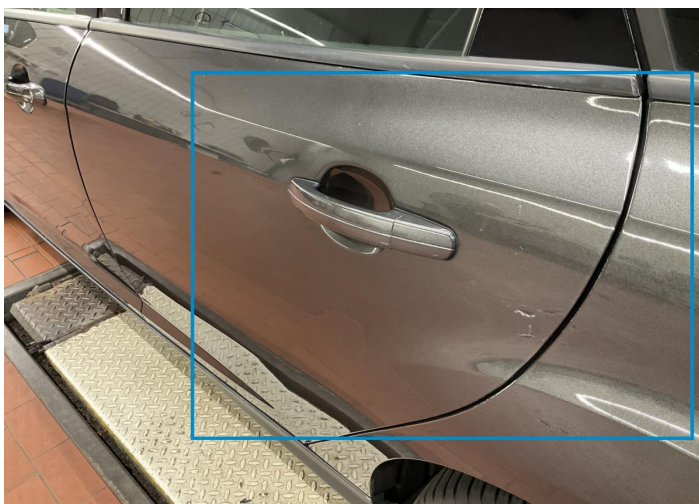
2. Wing Repeater / Left
Paint / Scratch / Scuff -



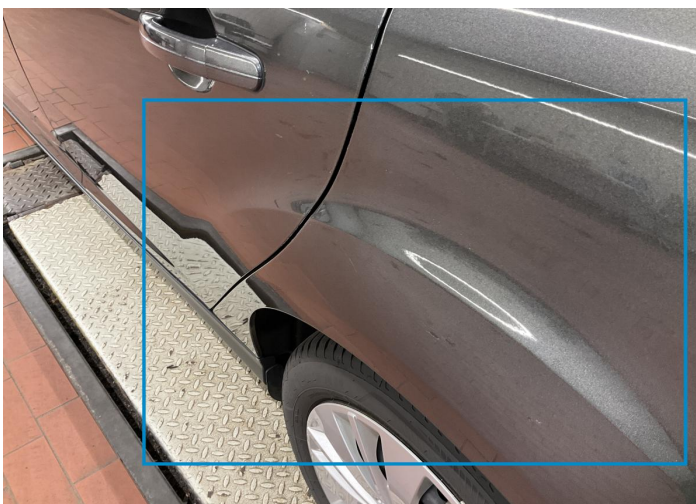
3. Windshield / Front
Bodywork / Dent / Deformation -



4. Door / Front Left
Paint / Scratch / Scuff -



5. Door / Back Left
Paint / Scratch / Scuff -



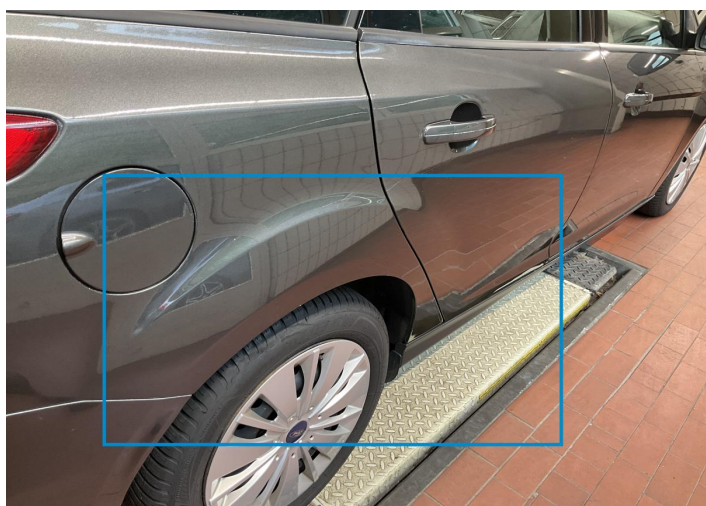
6. Side Panel / Back Left
Paint / Scratch / Scuff -



7. Bumper / Back
Paint / Scratch / Scuff -



8. Bumper / Back
Paint / Scratch / Scuff -



9. Side Panel / Back Right
Paint / Scratch / Scuff -



10. Door / Back Right
Paint / Scratch / Scuff -



11. Door / Front Right
Paint / Scratch / Scuff -



12. Antenna Rod
Out of Bodywork / Breakage -



13. Bumper / Front
Paint / Stone Chip -

Mechanical Condition

Control Lights

Display Defect	✓	Service Light	✓
ABS Warning Light	✓	ESP Fault/Traction Control Malfunction Light	✓
Airbag Warning Light	✓	Oil Pressure Warning Light	✓
Brake Warning Light	✓	Power Steering Warning Light	✓
Alternator / Battery	✓	No Dashboard Lights	✓
Tire Pressure Monitoring System	✓		

Equipments Test

Central Locking	✓	Main & Spare Keys Functioning	✓
Electric Windows	✓	Audio Equipment	✓
Parking Sensors / Cameras Functioning	✓	AC / Heating System	✓

Engine

Engine Status / EML	✓	Engine Leak Visible	✓
Engine Starts	✓		

Gearbox





Gear Box	✓
----------	---

Levels

Brakes Fluid	NA	Coolant Fluid	✓
--------------	----	---------------	---

Test Drive Inspection

Steering Wheel			
Steering Noise / Anomaly		✓	
Engine			
Engine Noise	✓	Fume Quantity	✓
Power Loss	✓		
Clutch			
Clutch Functioning	✓		
Brake			
Brake System Anomaly	✓		
General			
Test Driven Status	✓		

-  **No troubles detected, good condition or correct tests, according to vehicle age and mileage**
-  **Damages or malfunction detected that requires repairs by the buyer**
-  **Not applicable**
-  **Not tested**

Disclaimer

Please also note the "UserGuide condition report", which shows the scope of the vehicle description.

[User Guide](#)